



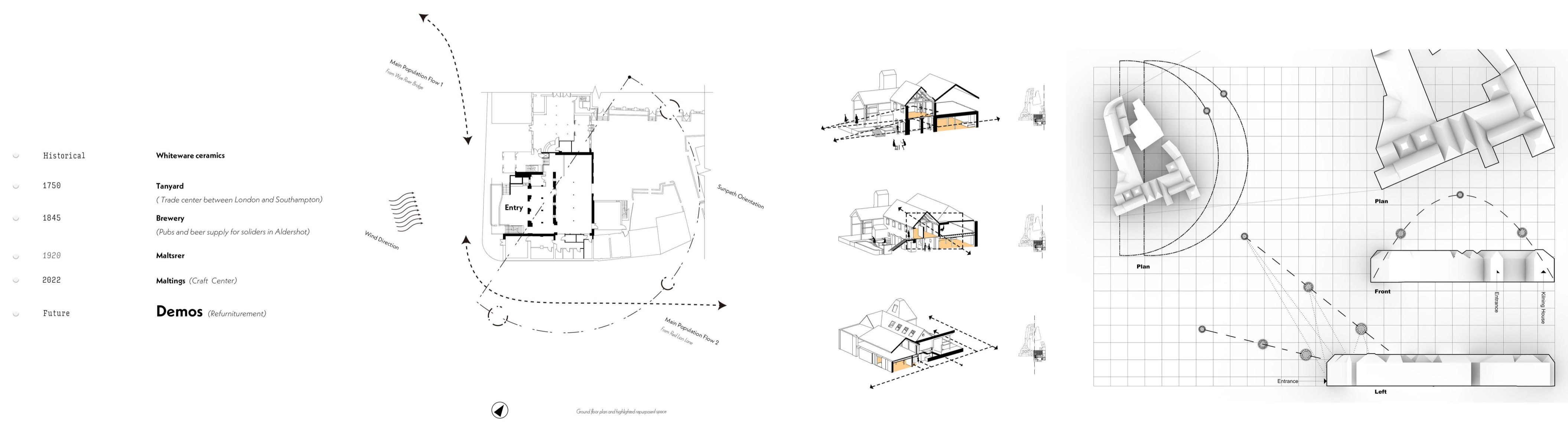
DEMOS

DEGROWTH & REFURNITUREMENT

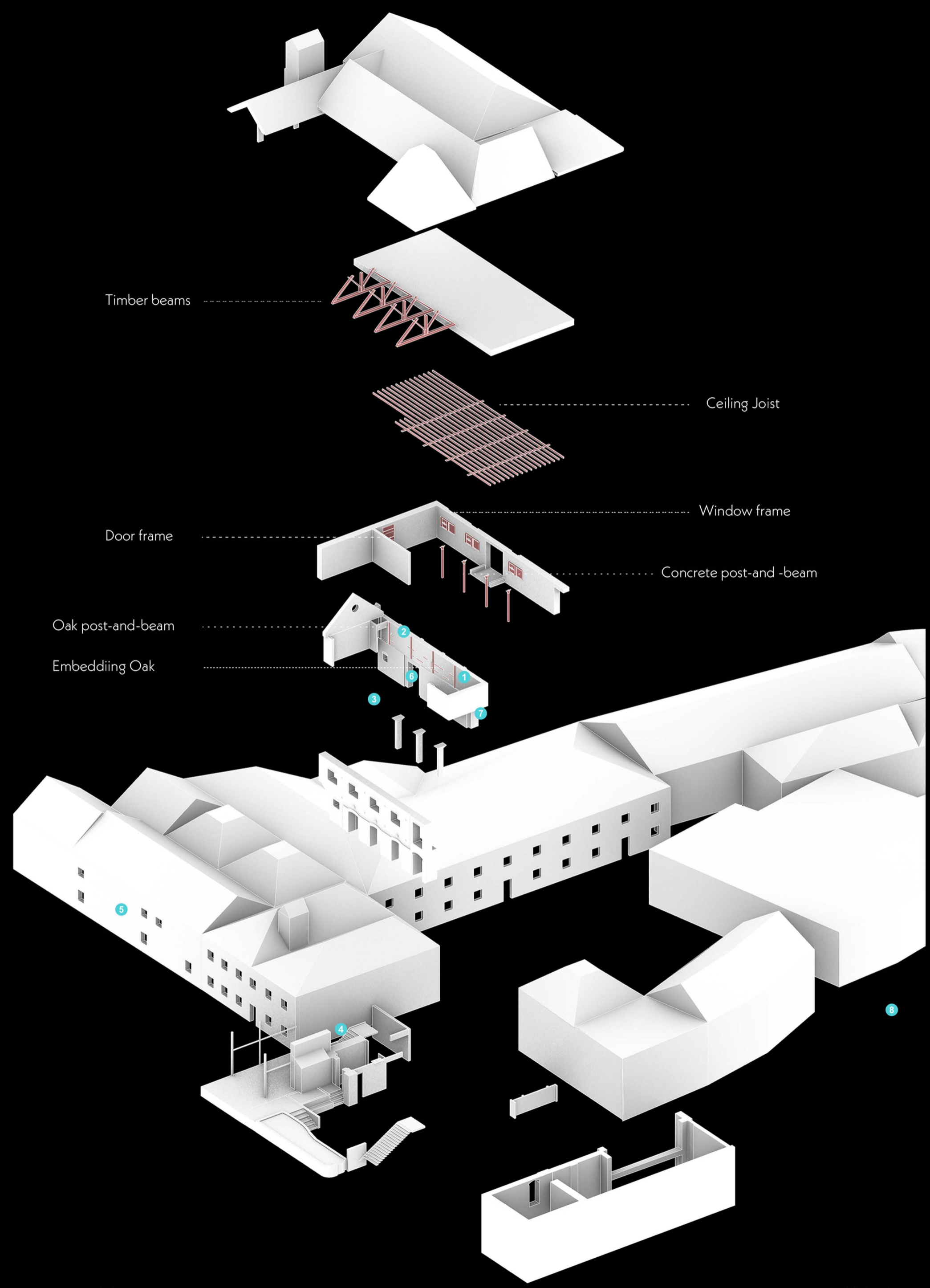
↑ Maltings, Farnham, Surrey

Over the last hundred years, Farnham has been successfully transformed from a **primary to a tertiary sector of industry**, but both handicrafts and **agriculture** have left an indelible mark on the town, and have made the town commercially active and resilient over years. Now in modern Farnham, it should better respond to the zeitgeist of sustainability while reviving community. And my project are aiming to intertwine the individual creativity and **refurniturement**, reduce the waste of furniture **raw materials**, also provide incubator for **local creative and enterprising artists**.

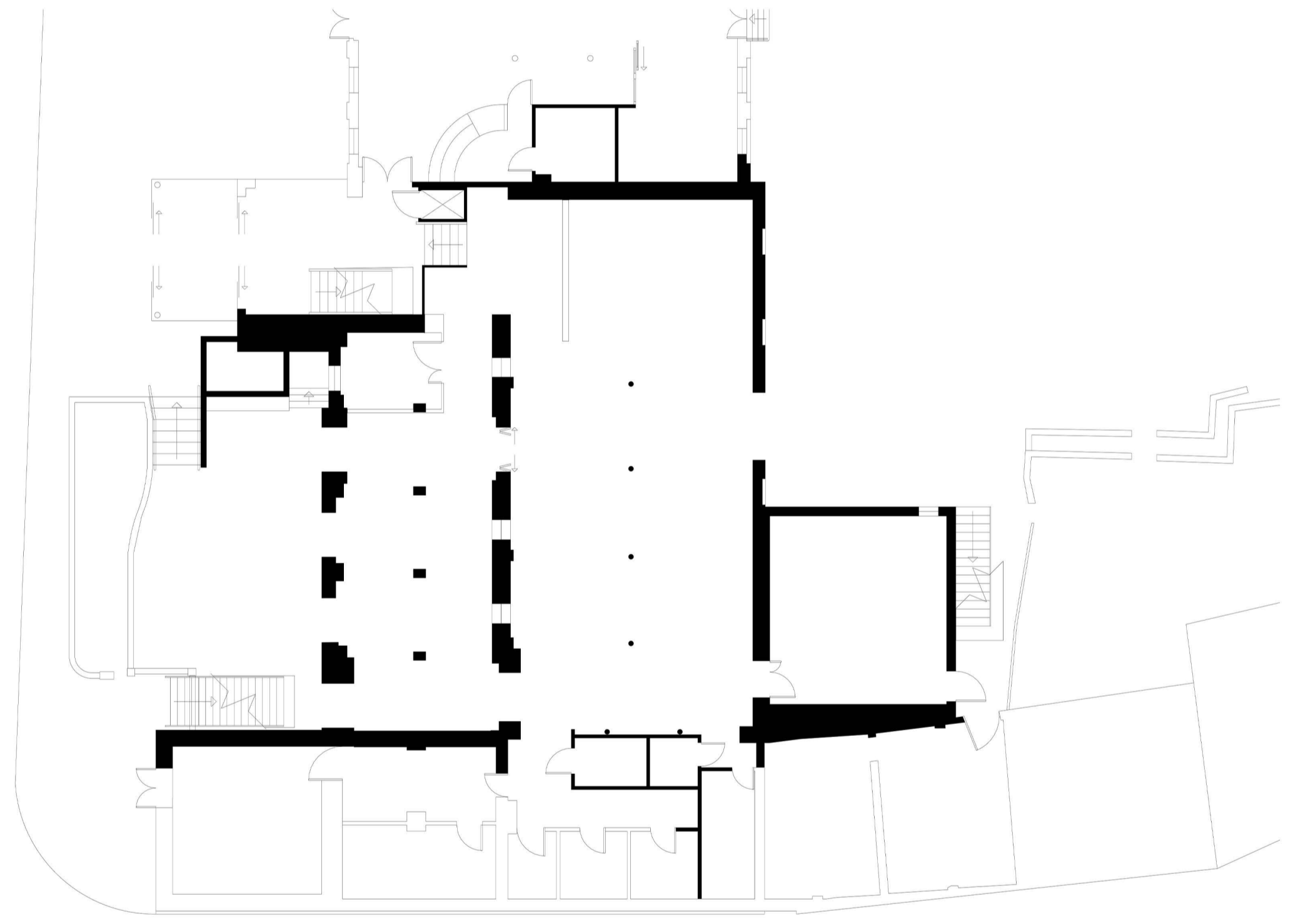
Overall view



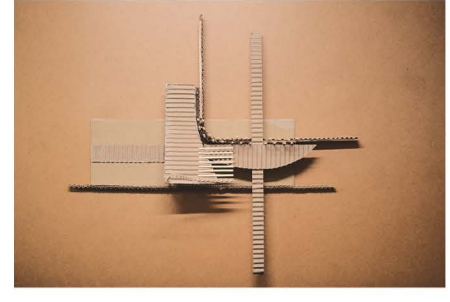
SITE ANALYSIS



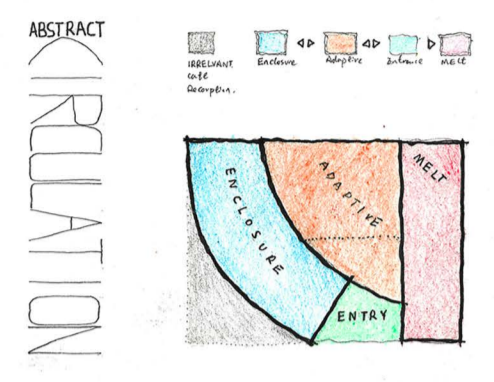
Precedent structure highlighted



1
Maquette / Plan
2022/2/7



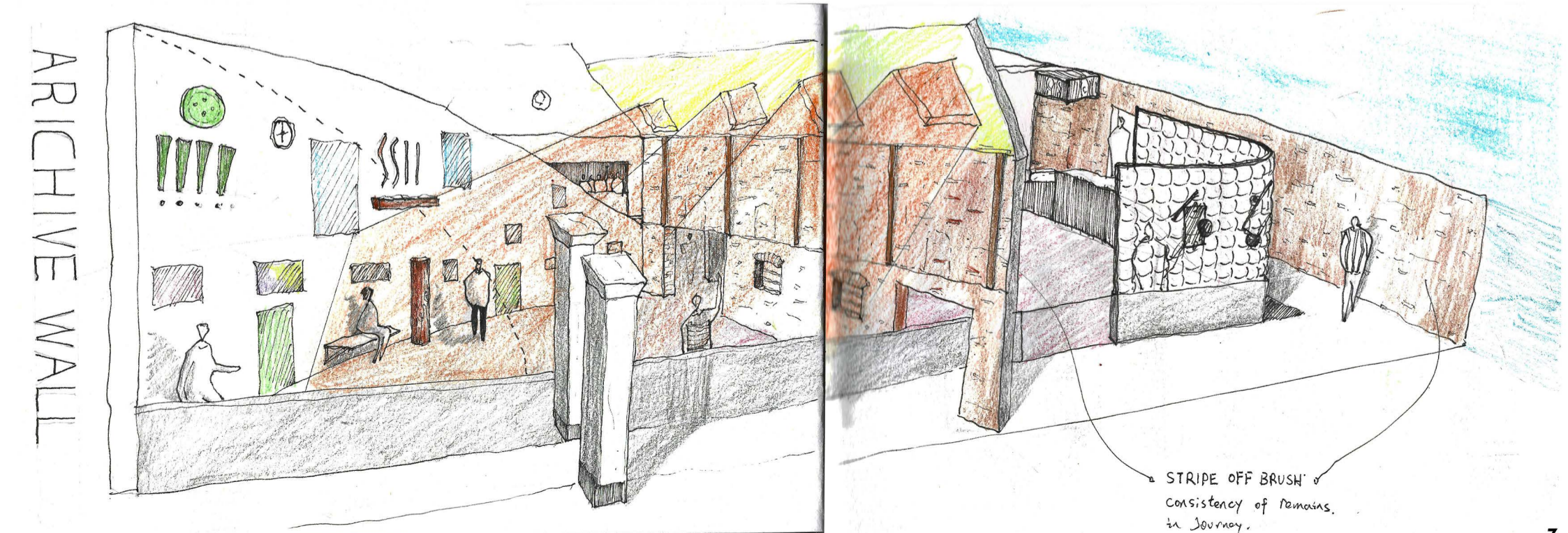
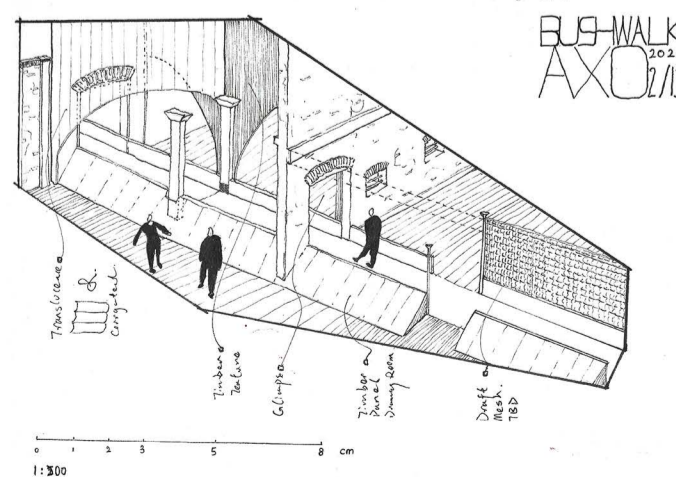
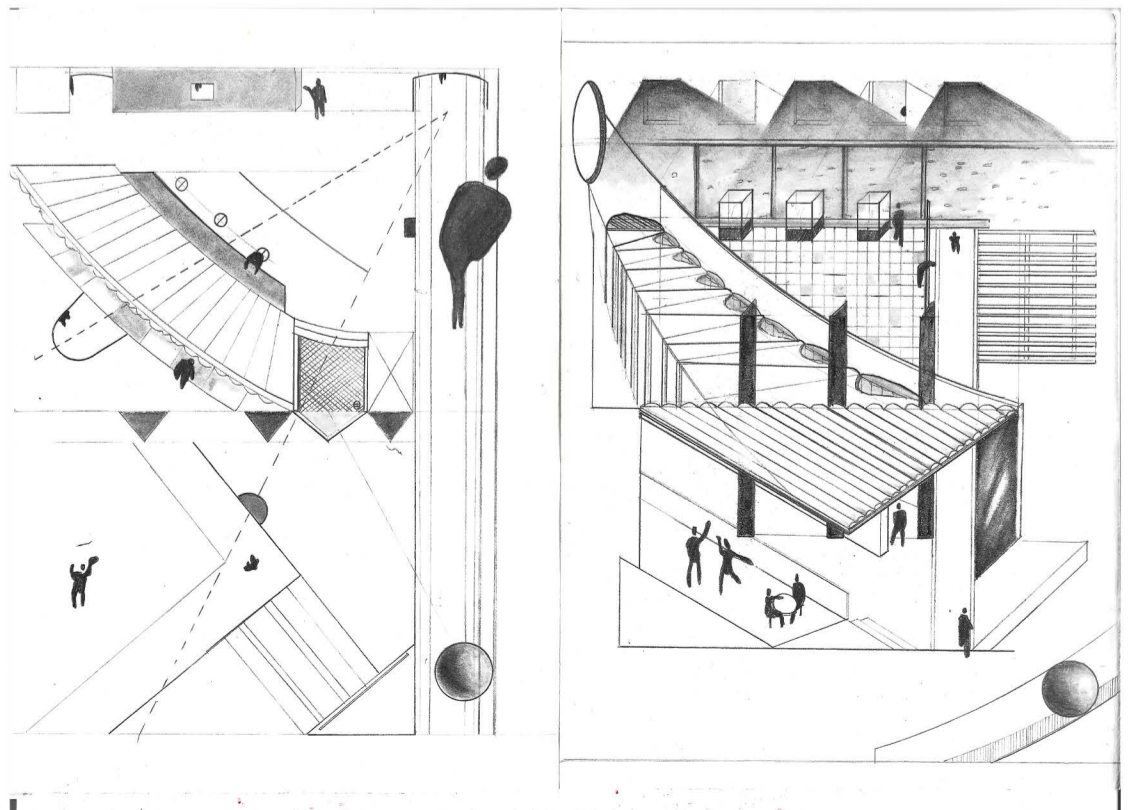
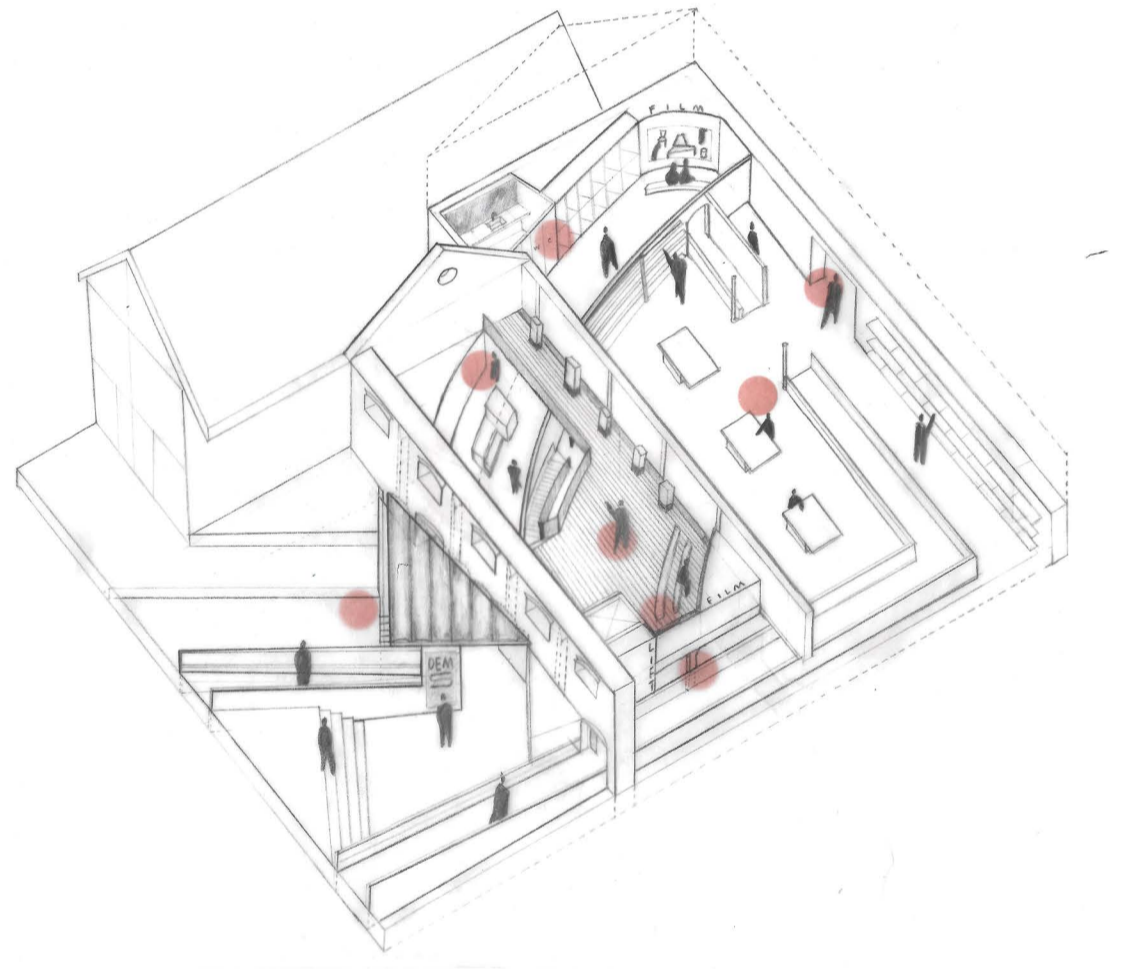
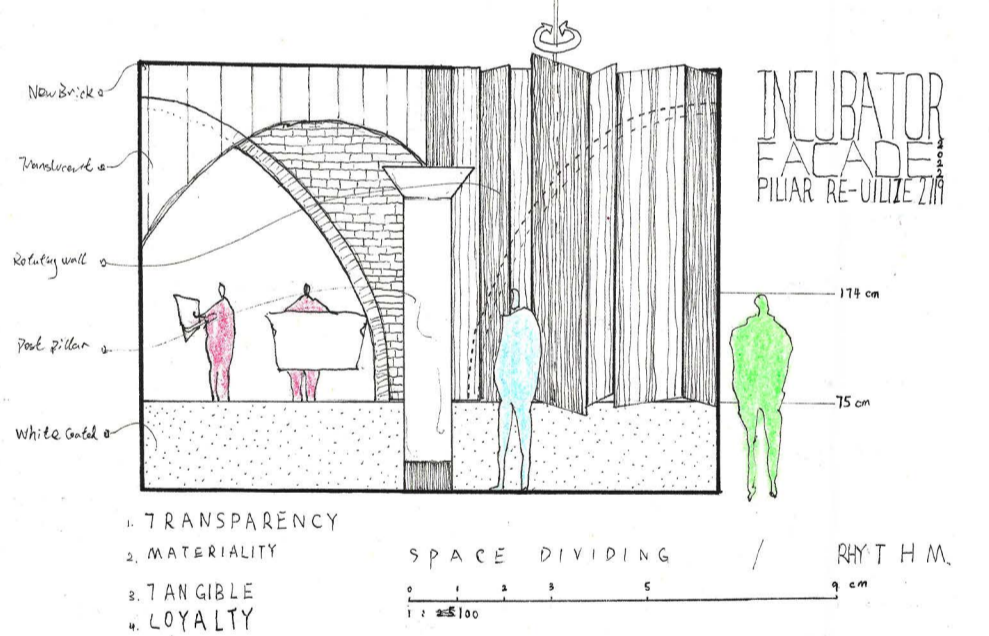
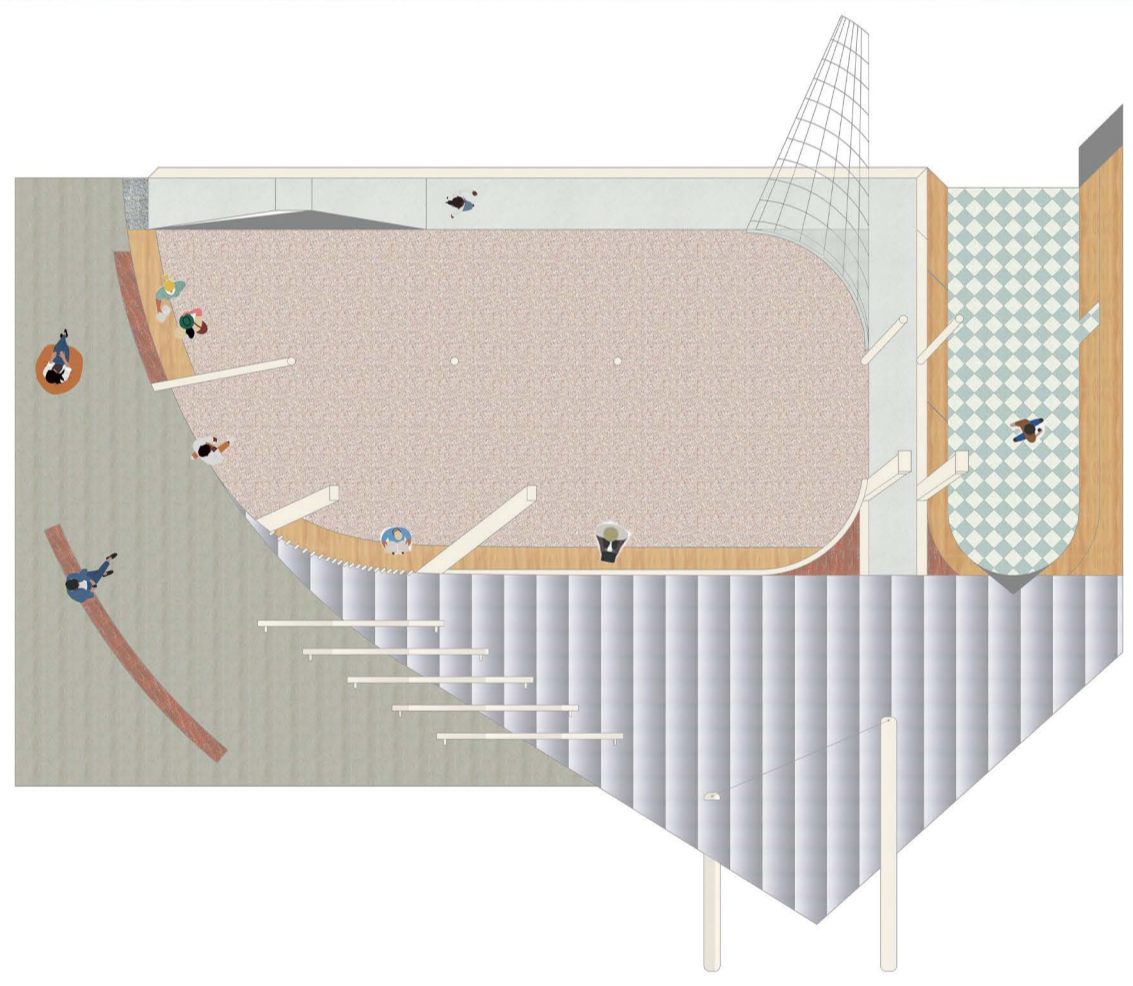
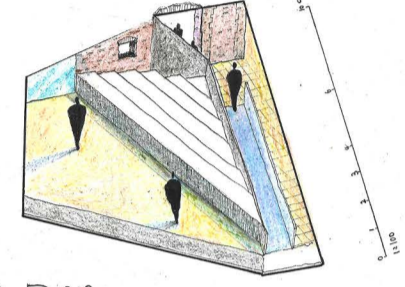
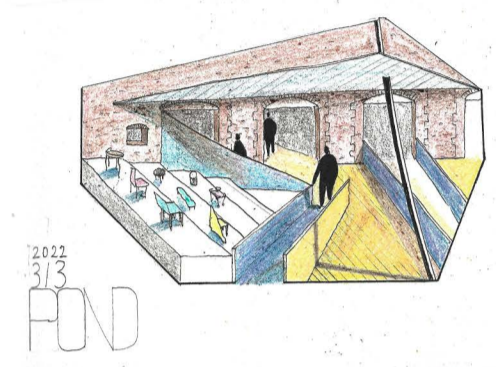
Experimenting maquette



Enclosure / Interactive exhibition and retail space.

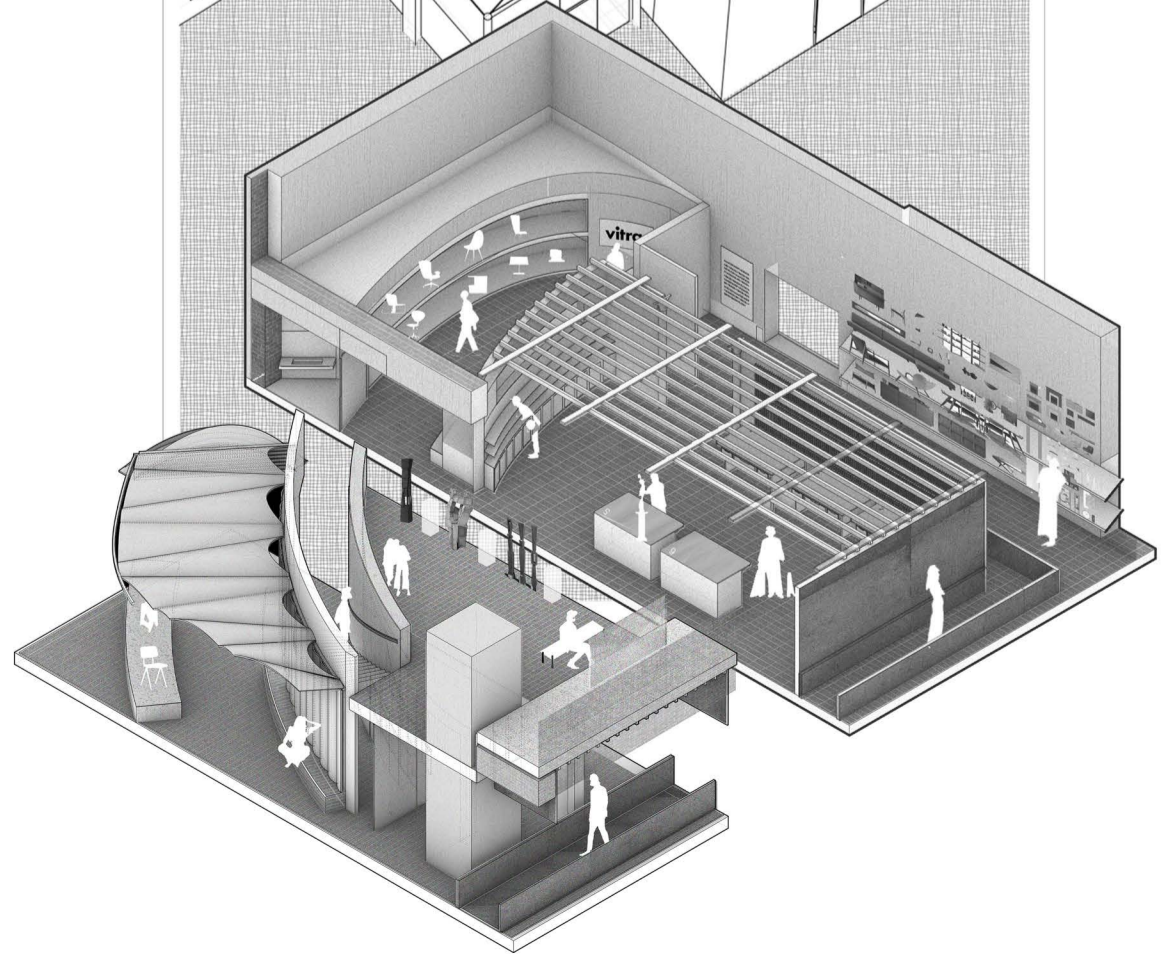
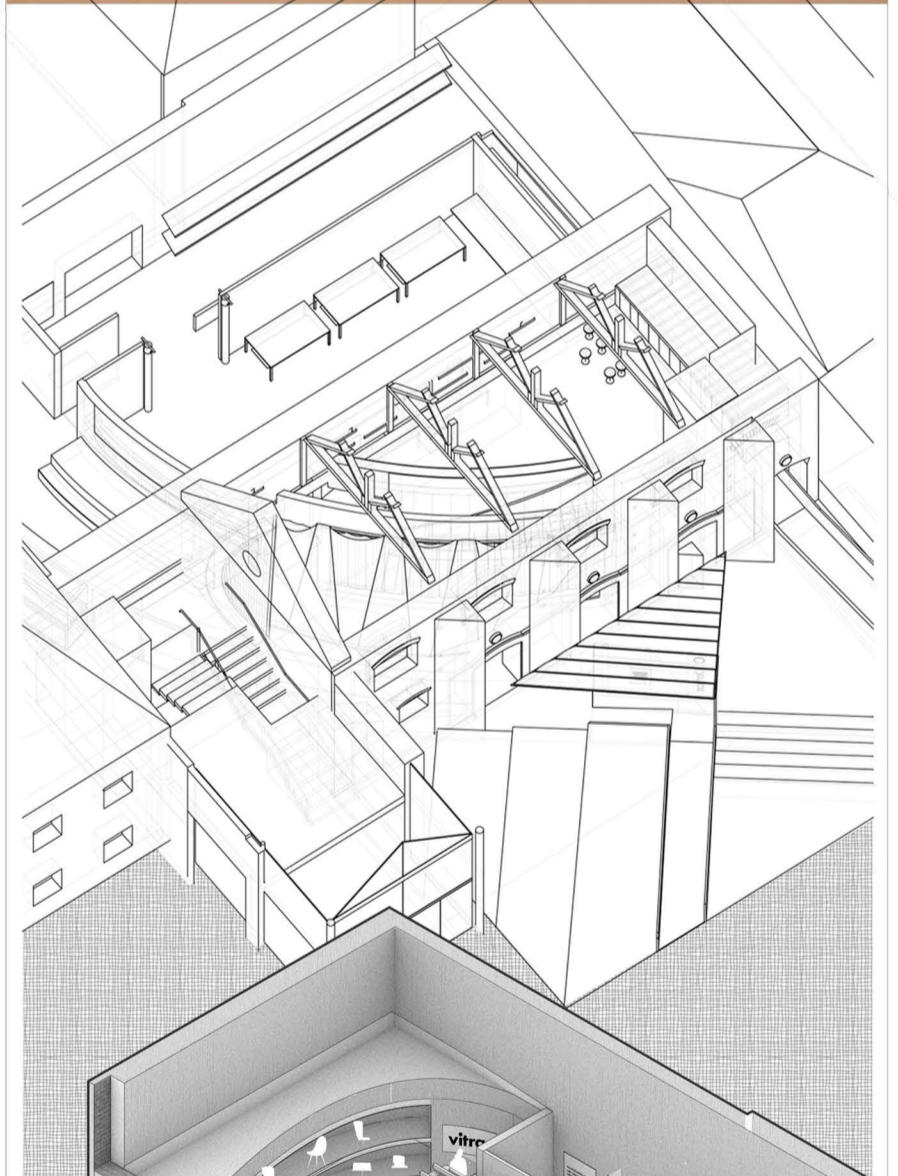
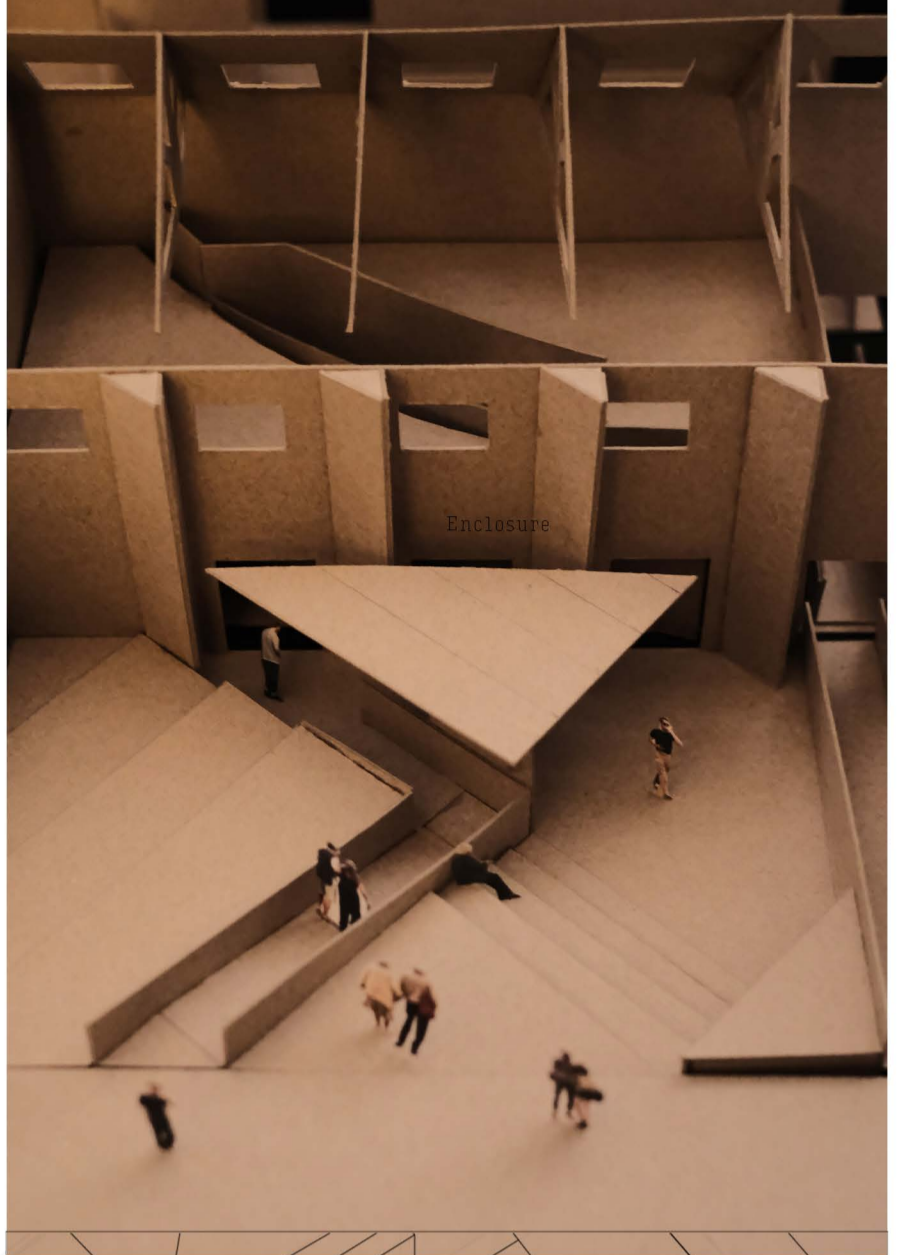
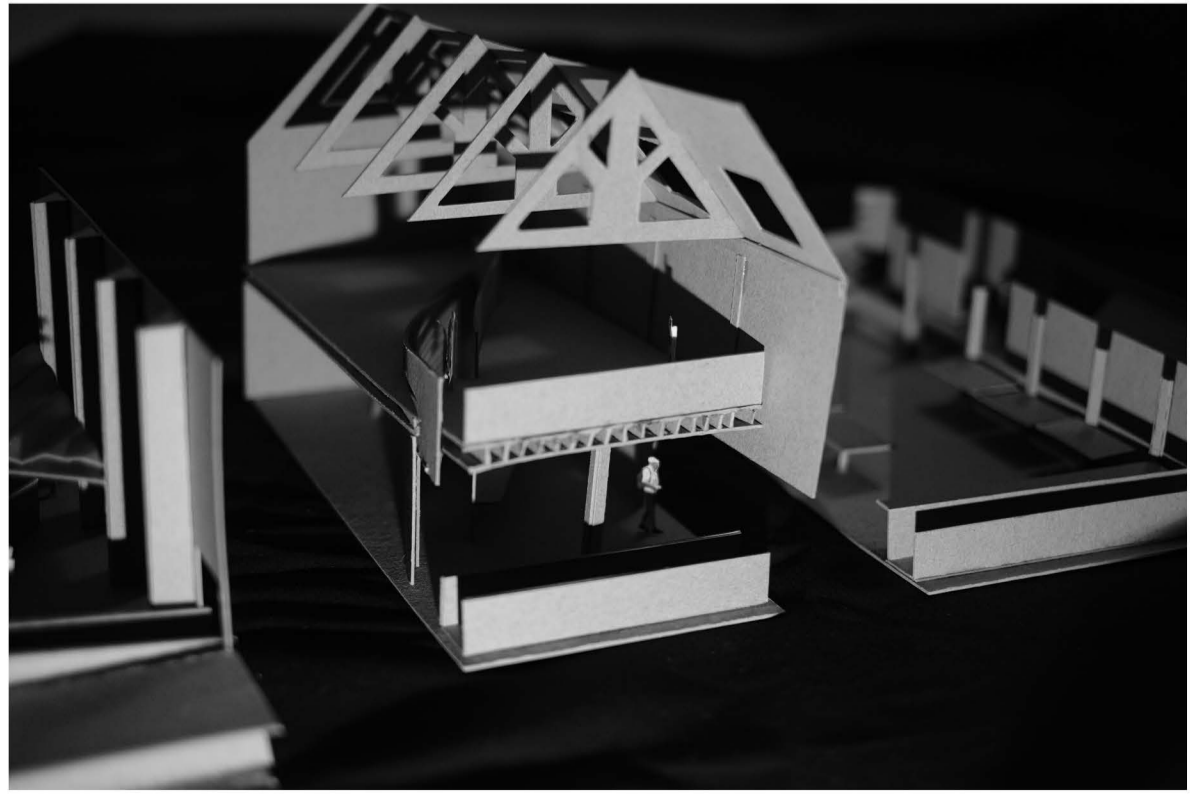
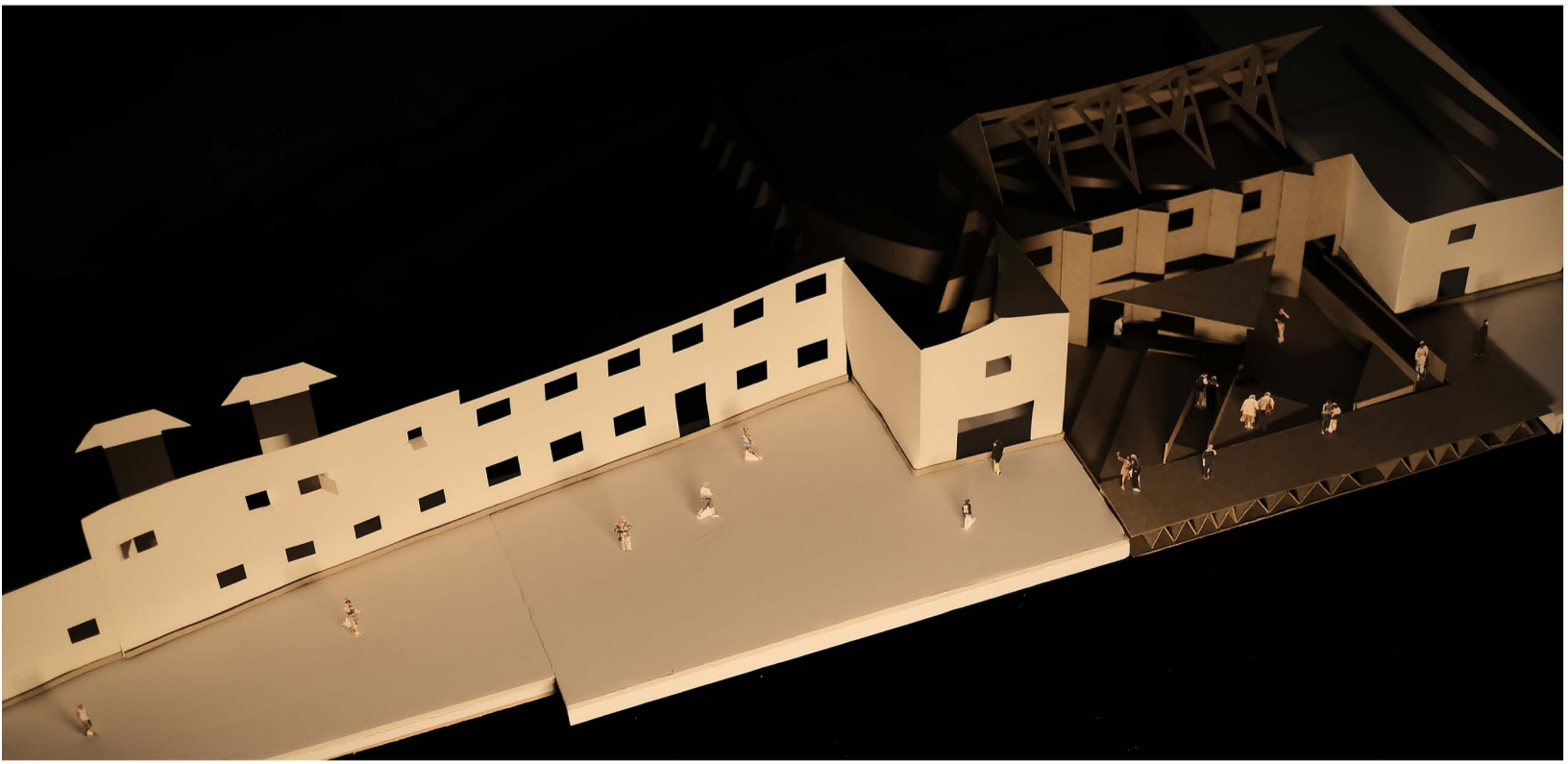
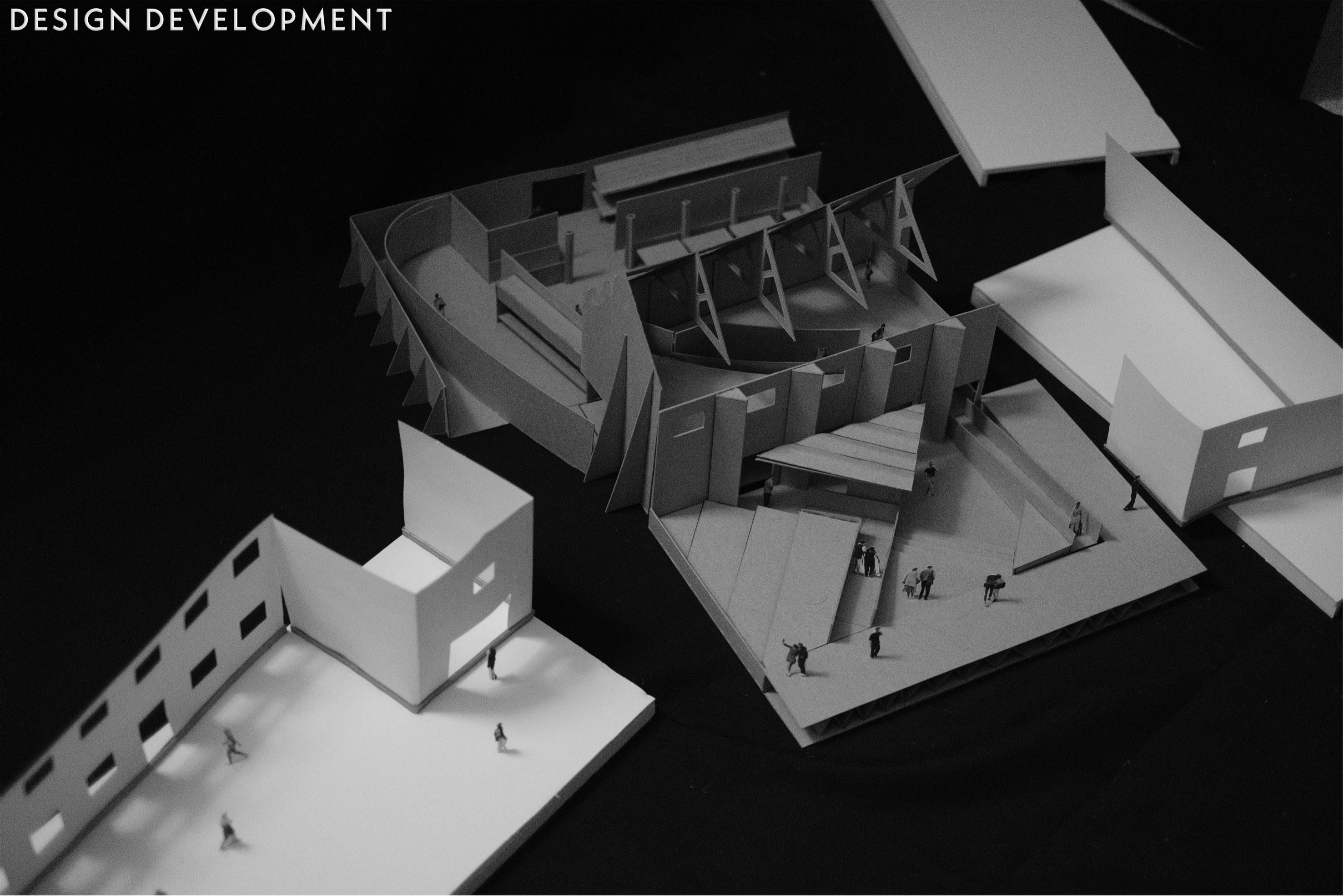
Adaptive / Main refurbishment area

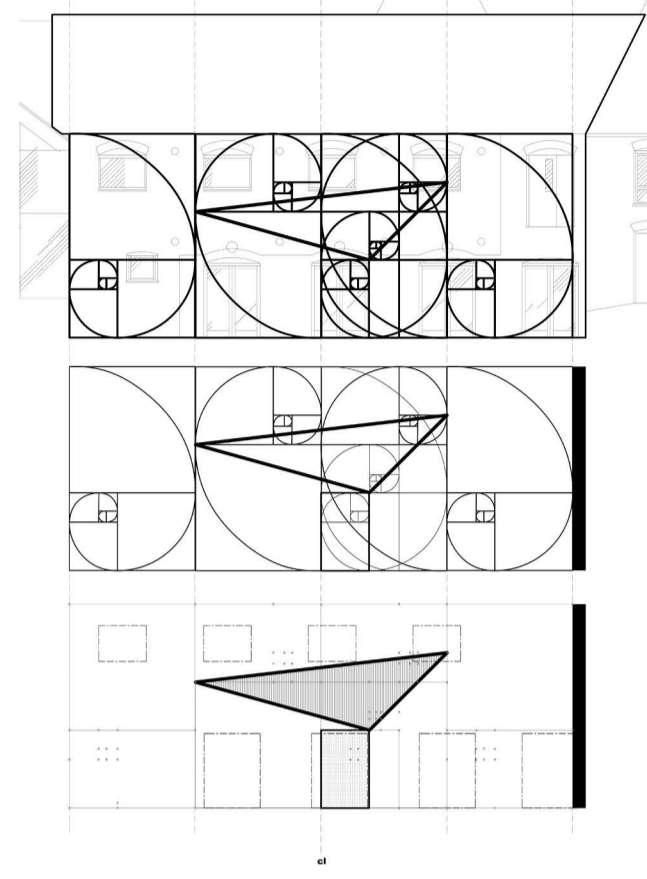
Melt / Raw material and recycled furniture drop-off point and storage space



STRIP OFF BRUSH' consistency of remains in Journey.

DESIGN DEVELOPMENT

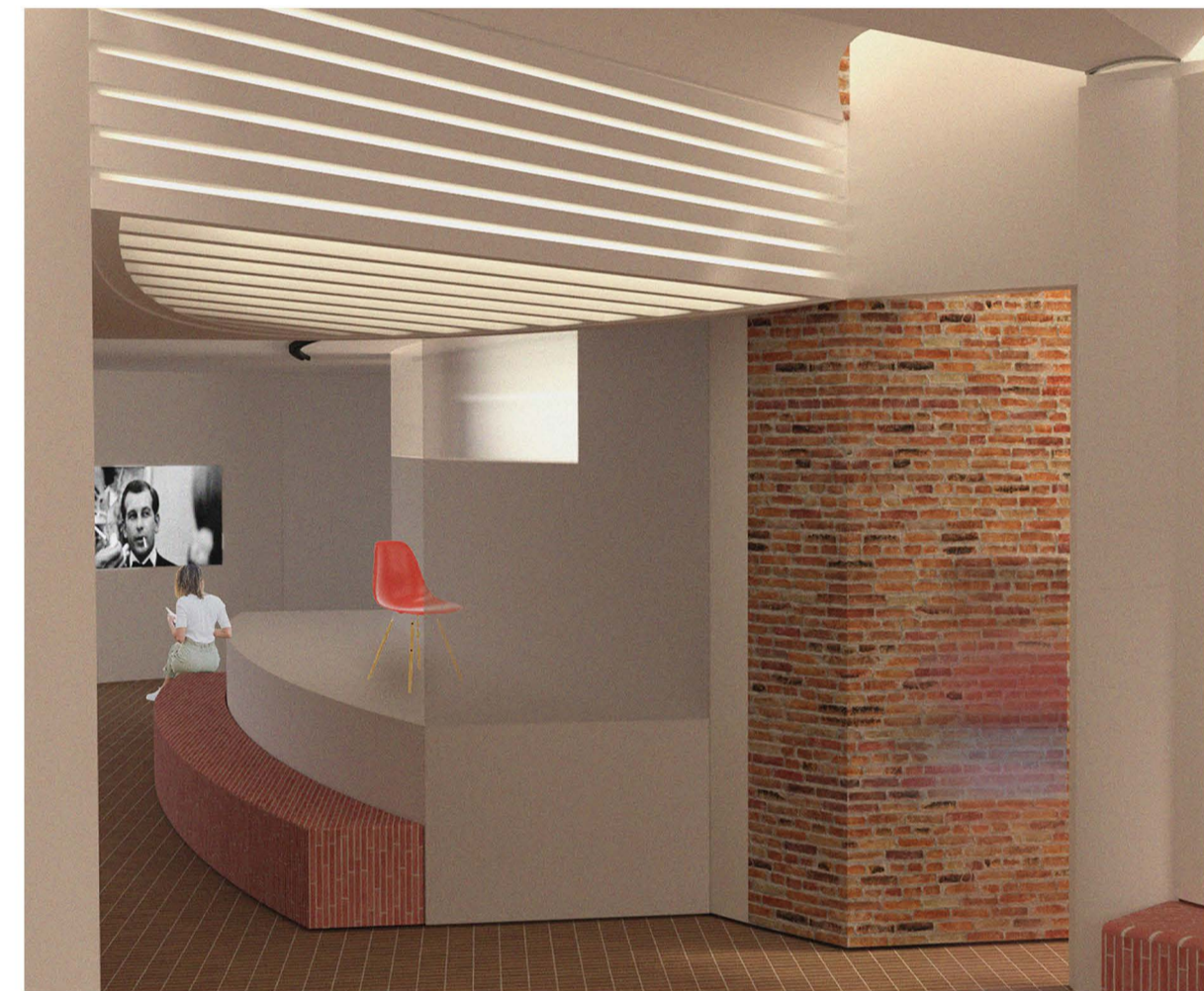




Facade Geometry



Each existing building has its own unique visual language, and all that the later needs to do is simply decoding. The layout of the front courtyard follows strictly the geometry of the original site, with almost suspended glass and weathering steel to express a strong clash between old and new, while the triangular "envelop" against the standing front facade is intended to be a flanking side. "envelop" on the front facade is designed to block the view of the brickwork on both sides of the entrance, thus reinforcing the contrast between materials and the old and the new as described above.



The enclosure is a place to exhibit the results of the refurniturement, the whole space is in a semi-ring shape, the material inside is almost isolated from the original site, I want to let people see the development of this place, but in some places I reuse the original ceiling wooden truss, transformed into a ring light box, let the whole space has a connection, also just compensate for the space transfer, the difference in height of the roof.