

London, the largest city in the United Kingdom, has one of the world's most ethnically varied populations.

This colourful city genuinely represents the world, with countries of origin ranging from India to Jamaica to Ghana and many more. One-third of Londoners are foreign-born, and while English is the official language, the vibrant streets are teeming with global languages - well over 200 languages are spoken.

While many individuals have chosen London as their new home, this made Mahler & Lewitt decide to choose London to host a residency, celebrating gender equality as they still have a strong attachment to their culture and express it in a variety of ways.

Diversity entails bringing people of various identities together. But how do you assist them in connecting?

When a company undergoes a cultural shift, it abandons one identity in favour of another. Most likely, the current culture isn't working for them - it's restricting production or producing divisions amongst teams. Perhaps there is homophobia or transphobia in the organisation as well.

Sexuality, gender, and identity experiences are extremely personal and can have a significant impact on who we are as individuals, how we interact with others in an organisation and the wider community. Being a member of the LGBTQ+ community may be an essential aspect of many young people's mental health stories, from being treated differently because of who you are to discovering yourself and community.

For this reason, Mahler & LeWitt artist residency project in London will focus on the LGBTQ+ community, offering opportunities to raise awareness, provoke questions and discussion and in doing so enable cultural shifts towards greater inclusion and understanding.

INTRODUCTION TO BRIEF + SITE



EXISTING SITE - FRONT ELEVATION



SITE ANALYSIS



MASSING STUDIES



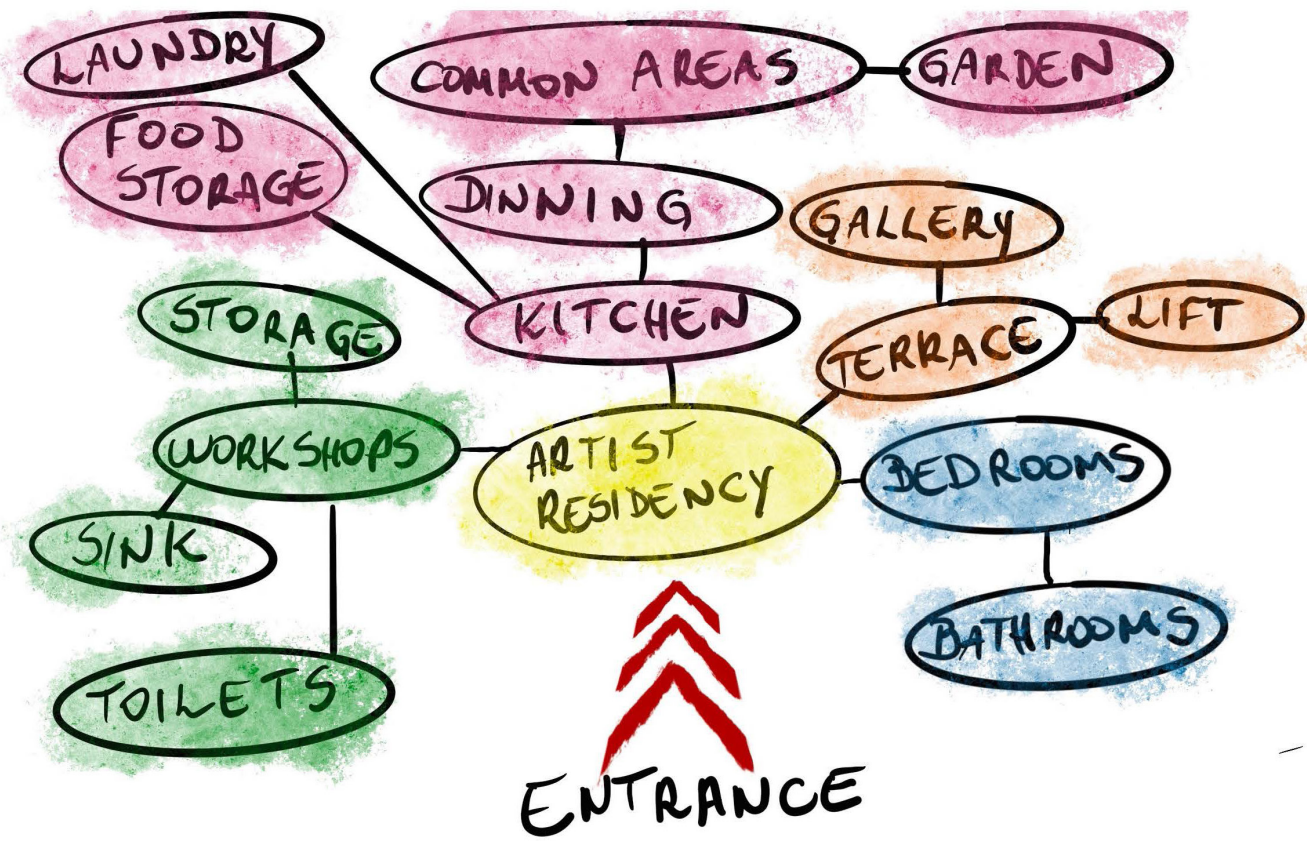
EXISTING FRONT ELEVATION



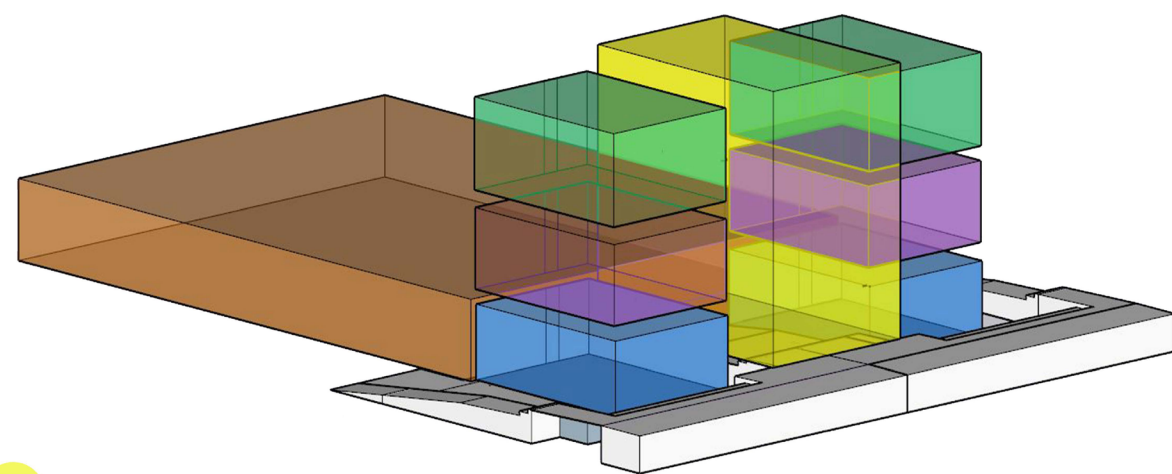
CONCEPT SKETCH



CONCEPT SKETCH



The LGBTQ+ community in London is probably larger than you realise. The metropolis is commonly regarded to have the largest gay population in Europe, and a 2015 poll by the Office for National Statistics indicated that Londoners are over twice as likely as persons in most other UK regions to identify as lesbian, gay, or bisexual.



- Ceramic Gallery - Public Space (41.734 Sq meters)
- Garden - Public space (452.60 Sq meters)
- Kitchen/Common area - Semi-Private space (82.50 Sq meters)
- Artists Workshop - Semi-Private space (82.50 Square meters)
- Accommodations - Private space (82.50 Square meters)



London is home to a large lesbian, gay, bi and trans (LGBTQ+) community. LGBTQ+ people make a major contribution to our economy and culture, helping make London one of the most exciting cities in the world.

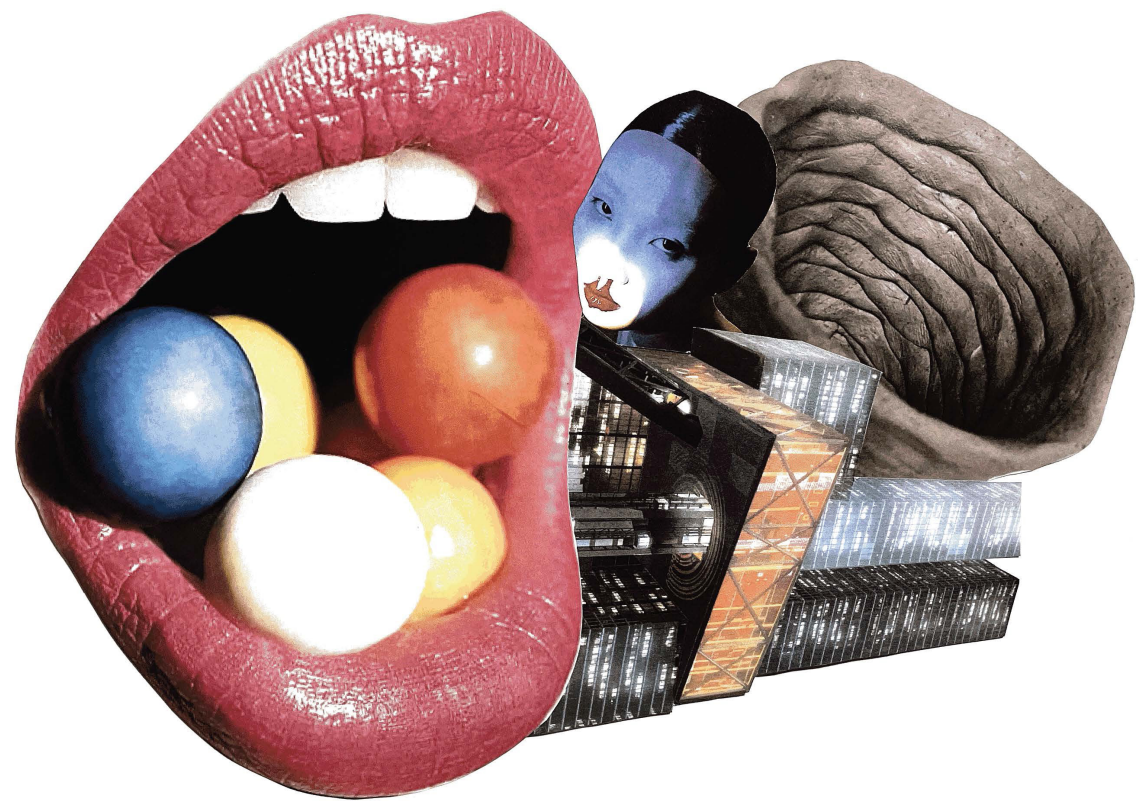
CONCEPT DEVELOPEMENT

Emotions are an important part of who I am, yet they may be messy, challenging, and even perplexing at times. I wanted to express to the outside world what I was experiencing inside of myself, and I wondered what these sentiments would look like on the outside of my body. Collage, for me, is a wonderful tool for relaxation and meditation, as well as for keeping the mind peaceful, both of which are excellent things for someone who suffers from anxiety.

But it may also take me through some of the more painful aspects of my life experience, the ones that are tough to discuss. When I don't know what to say, I may use collage to communicate myself.

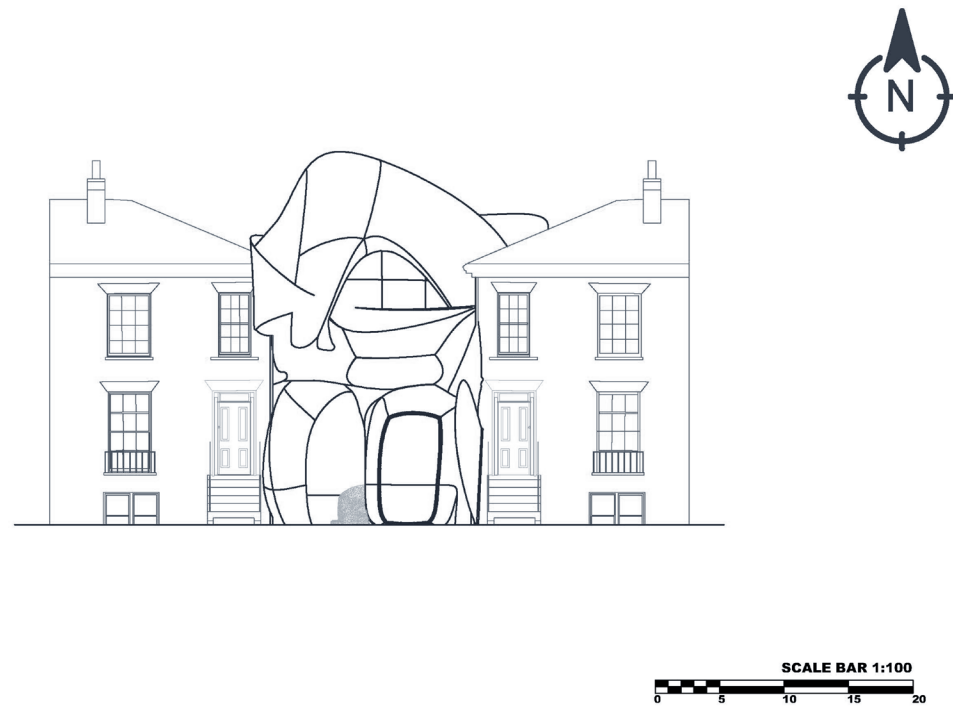


ENTRANCE

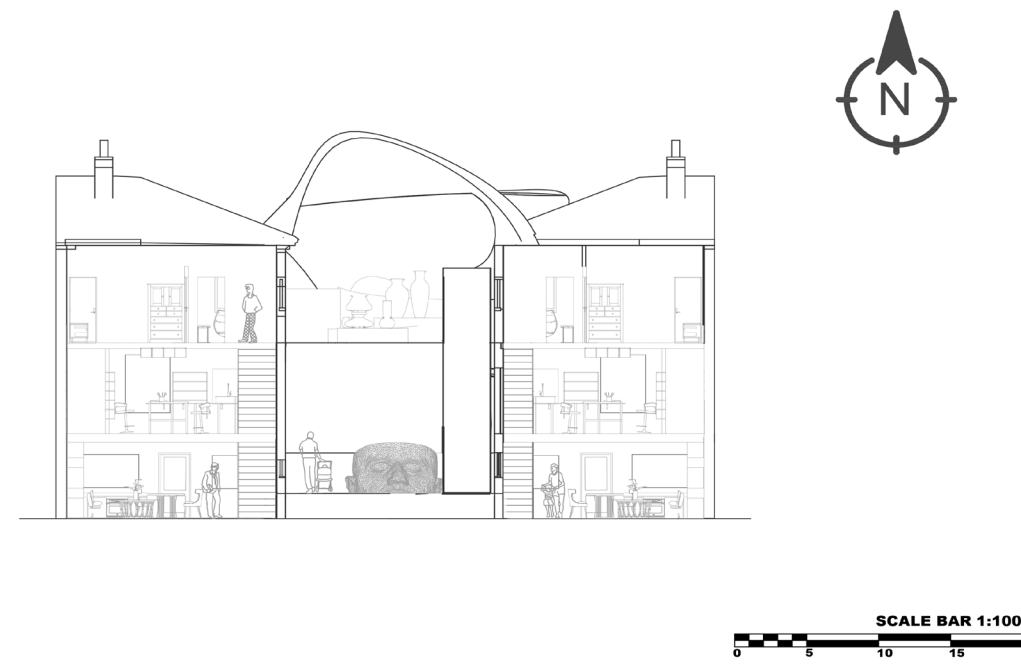


GENESIS COLLAGES

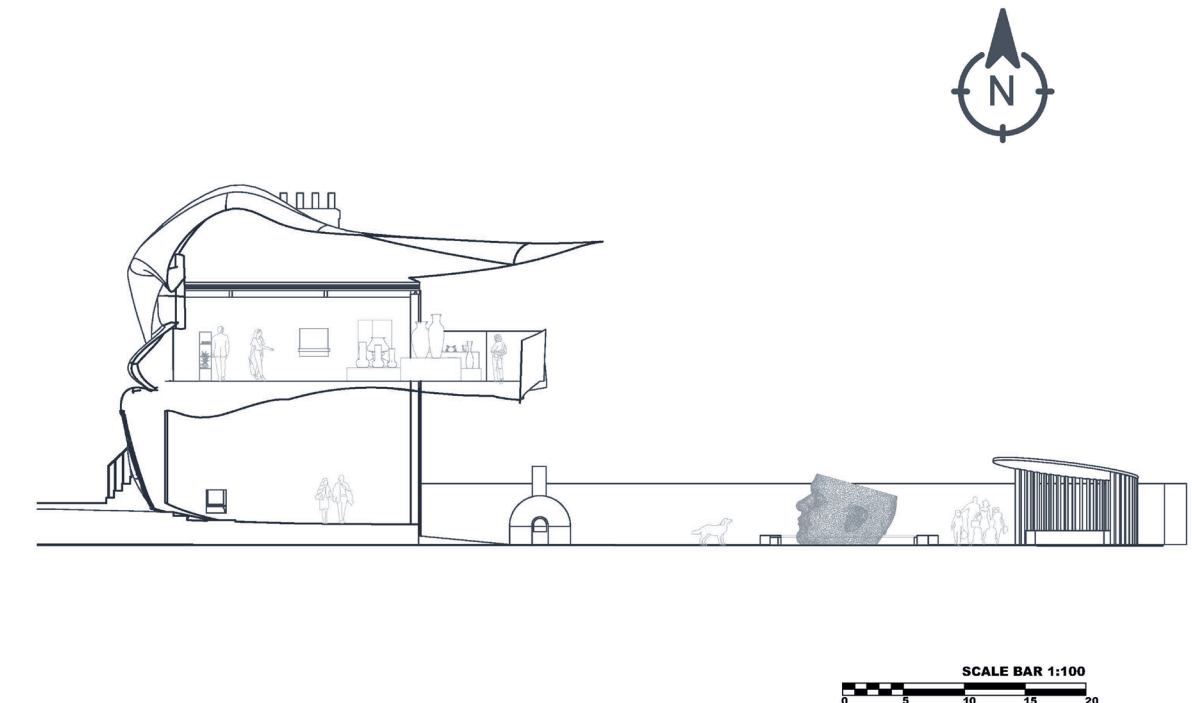




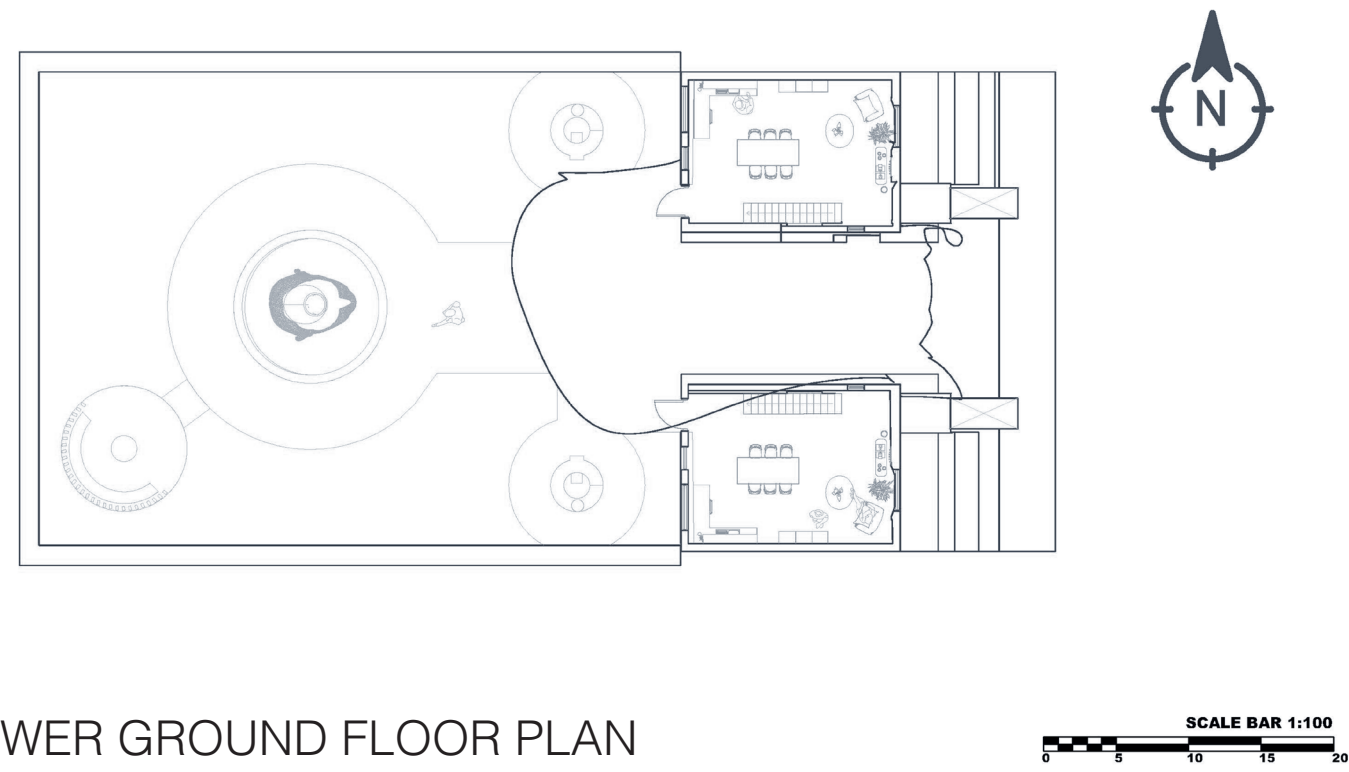
FRONT ELEVATION



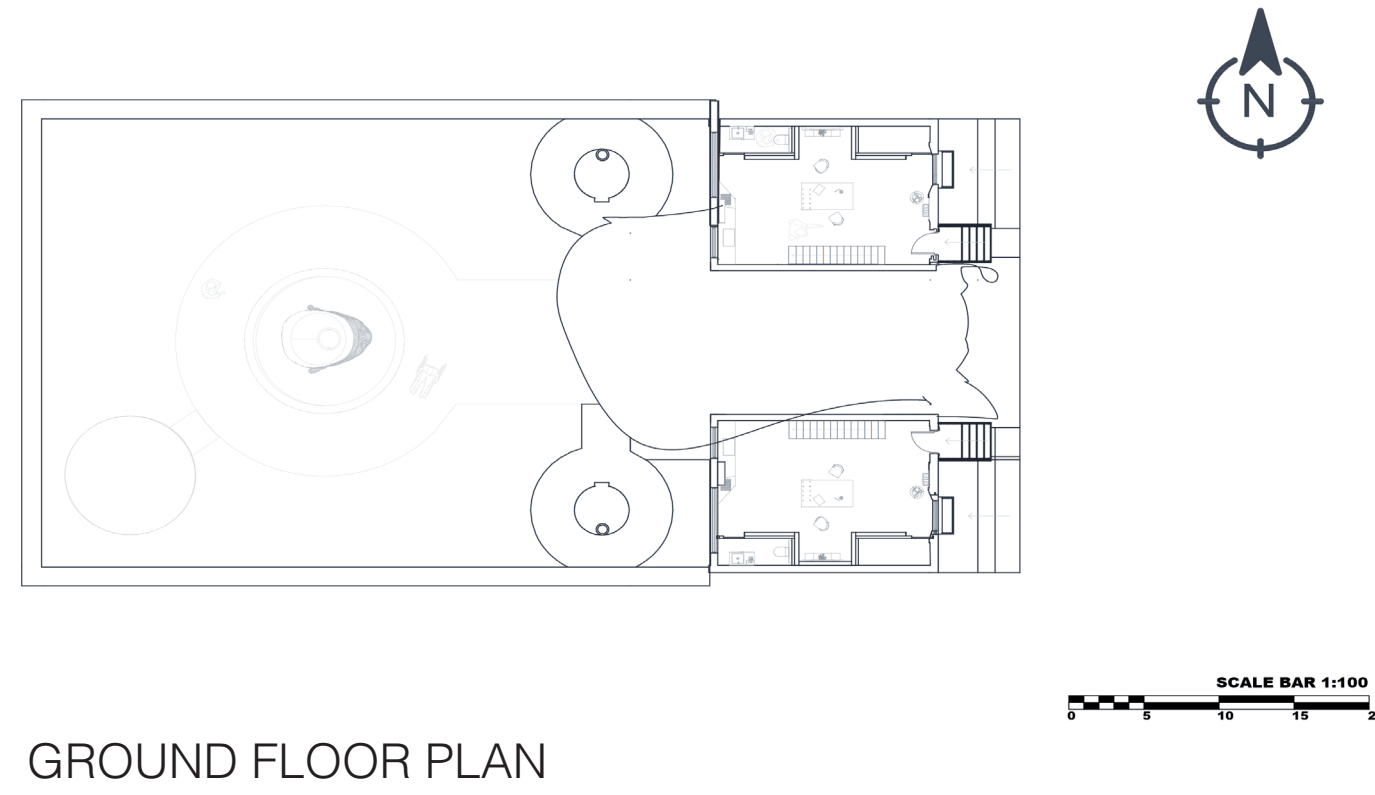
FRONT SECTION



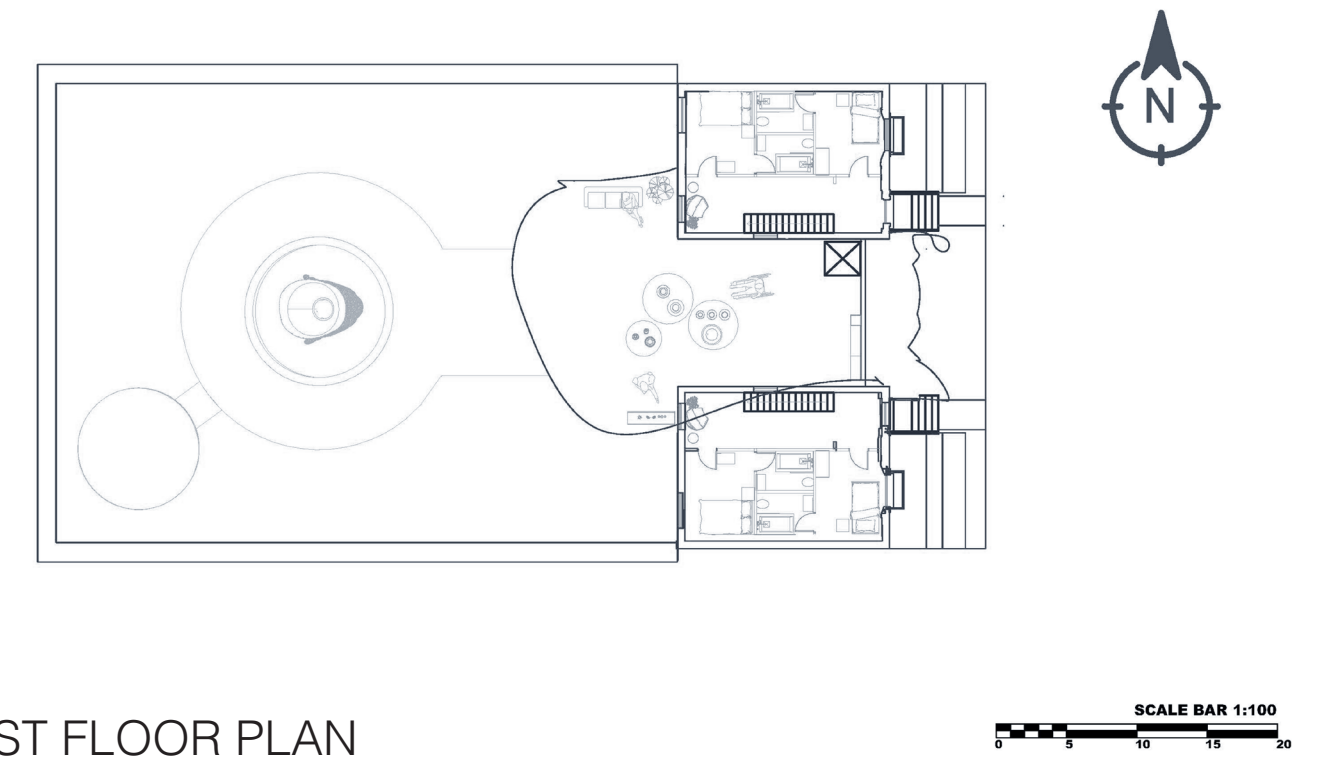
LONG SECTION



LOWER GROUND FLOOR PLAN



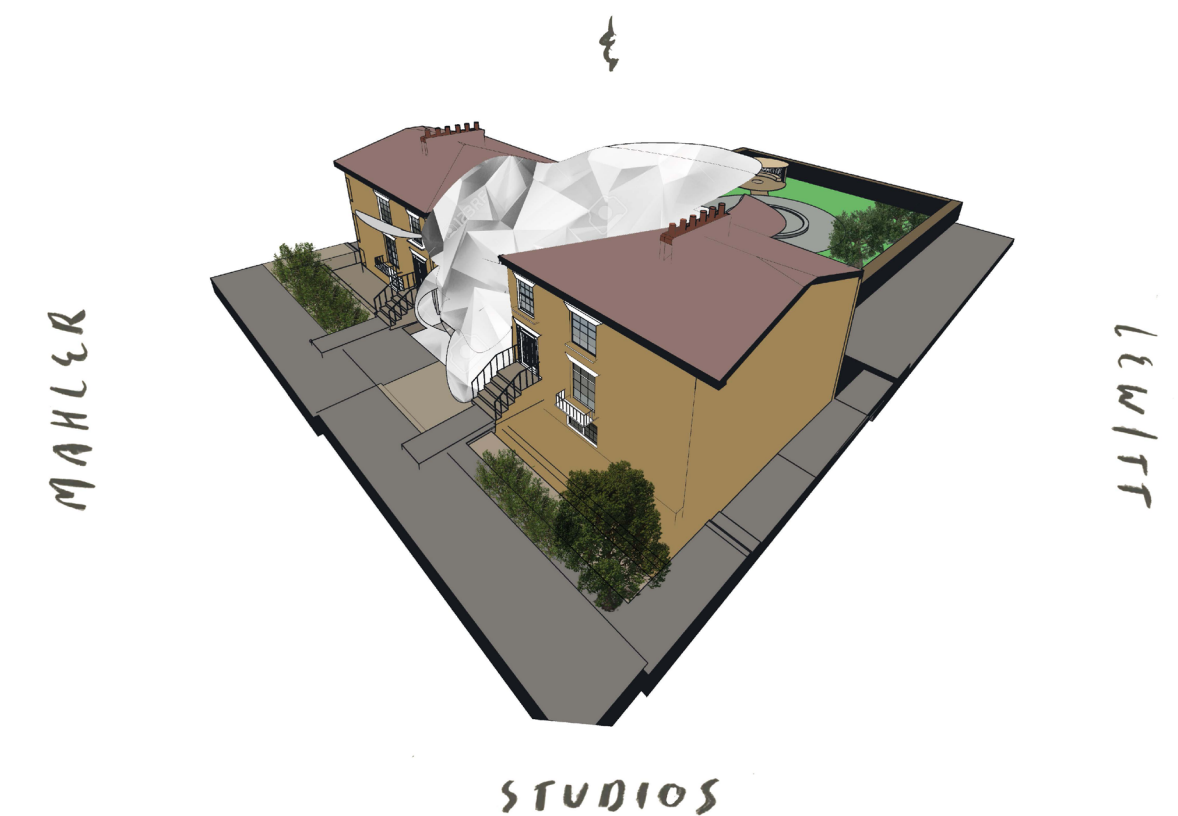
GROUND FLOOR PLAN



FIRST FLOOR PLAN

It is critical to make the most of any residency. They can be difficult to obtain, expensive at times, and disruptive. Artists who have caring obligations or a regular employment may find it difficult to take time away from their daily life. There are numerous types of residencies available, each with its own set of experiences. Our artist-in-residence programs will offer 4 artists the opportunity to live and work outside of their usual environments, providing them with time (between 3 to 6 months) to reflect, research, or produce work. During a residency, artists can explore new locations, different cultures, and experiment with different materials.

PROPOSED DESIGN



de zeen



'The Girl Can't Help It' by Fernando Claudio Da Silva Tagliati.
"Tagliati created his lamp as a representation of himself and as a nod to the elaborate drag culture of a bygone era".
"The glamorous makeup and accessories were added to an accurate 3D printed replica of his head - slight adaptations of scale give a more theatrical outcome".
"It represents a tribute to the LGBTQ+ community's ever-growing voice within our society."



My lamp design was inspired by the iconic Drag Queen DIVINE, who famously starred in John Waters films in the 1970's and 80's.
This particularly makeup she wore on the set of the "Pink Flamingos" film in 1972.
Why my own head? Referencing the idea of artist as celebrity, merging inspiration with metaphors, the lightbulb, the open cage, transgressing boundaries and expectations.



The creation of the lamp required that I collaborate with other professionals.
This included my tutors to discuss my original ideas and develop my concept, a technician to create a 3D printed head, a make-up artist to create the make-up design and an electrician to follow health and safety guidelines.

LAMP PROTOTYPE

