

# MAHLER LEWITT STUDIOS

JOE PEARCE

INTERIOR FUTURES

ARTIST LIVING QUARTERS  
OVERLOOKING HACKNEY

## SITE ANALYSIS

SITE

MAIN ROADS

SUN  
PATH



SOCIAL HOUSING

WALK TO SITE



EXPLORING 'CULTURE' IN THE MELTING POT THAT IS LONDON...

How can I create a manifesto for an interiors aesthetic for the future of London's cultural scene. Can I develop a future by looking at the past? These are questions that made me analyse the organic growth and evolution of a fashion, music and the art scene that is ever-changing and parasitic. Is there a future or just a moment of 'now'? Should we even worry about this or just enjoy the journey?

## BRIEF

This site is a gap site between two Victorian houses where we were tasked with creating an inclusive and socially diverse gallery and artists residency.

To research, design and propose a new London residency headquarters for Mahler & Lewitt Studios. Our challenge is to create a new link between the existing houses, add a gallery/exhibition space and redesign the house interiors into between four and six mixed use studios for the visiting artists.

## MAHLER + LeWITT

Mahler & LeWitt Studios is a residency programme located in Spoleto, Italy. As the name suggests, the residency is based around the previous studios of Anna Mahler (a stone sculptor born in Vienna) and Sol LeWitt (an American artist best known for his contemporary and minimalist work).

The residency provides a getaway to a focused environment in the hilltops of Italy with other like-minded artists, curators and writers. The studios host three residency programmes per year, each lasting up to six weeks. Each resident has a private workspace and accommodation, and are often offered travel funds and a materials budget. At the end of each programme, the artists take part in a 'Open Studio' event, sharing their work with the public.

GENESIS IMAGE



CONCEPTUAL COLLAGE 1



CONCEPTUAL COLLAGE 2

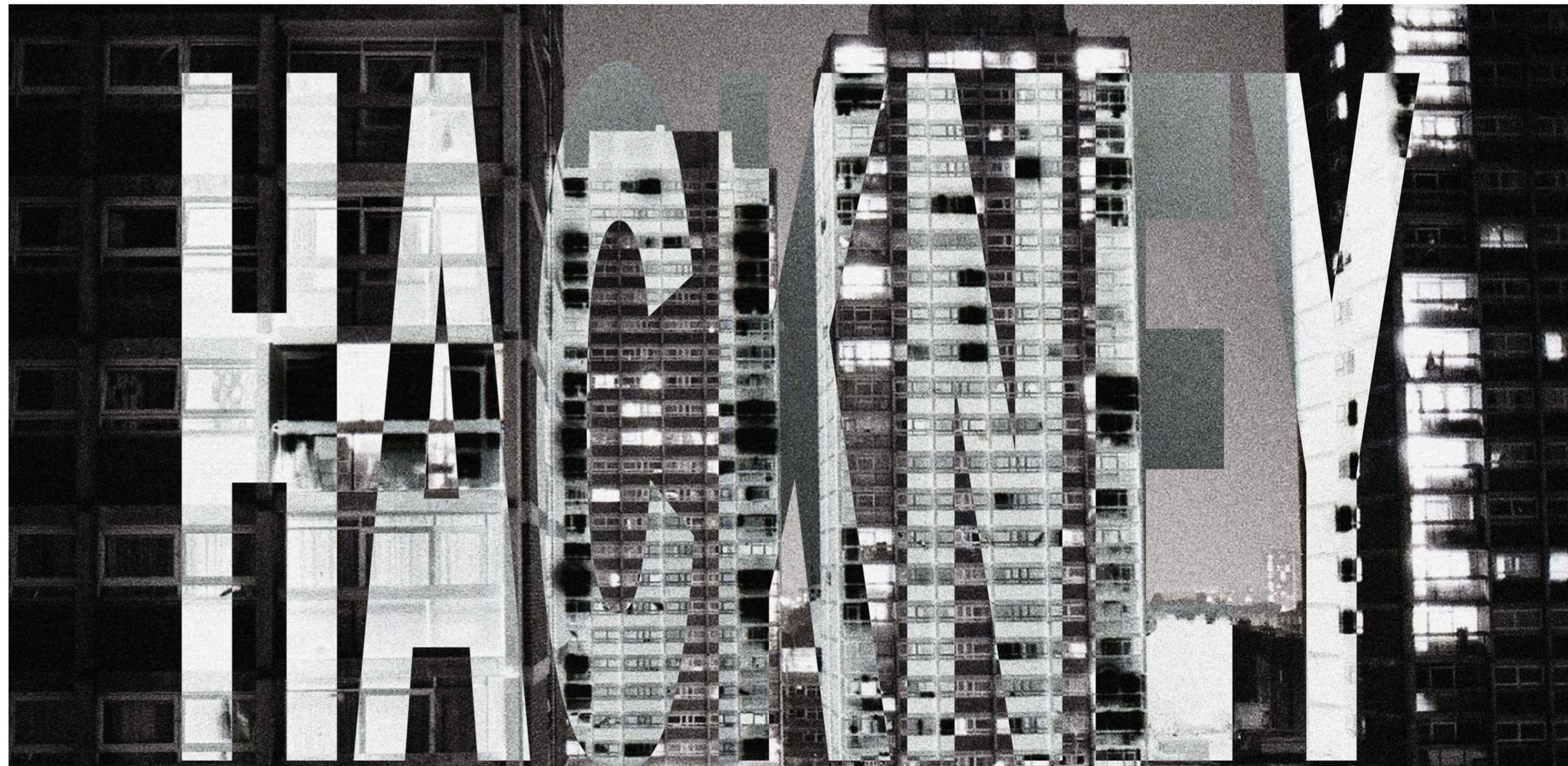
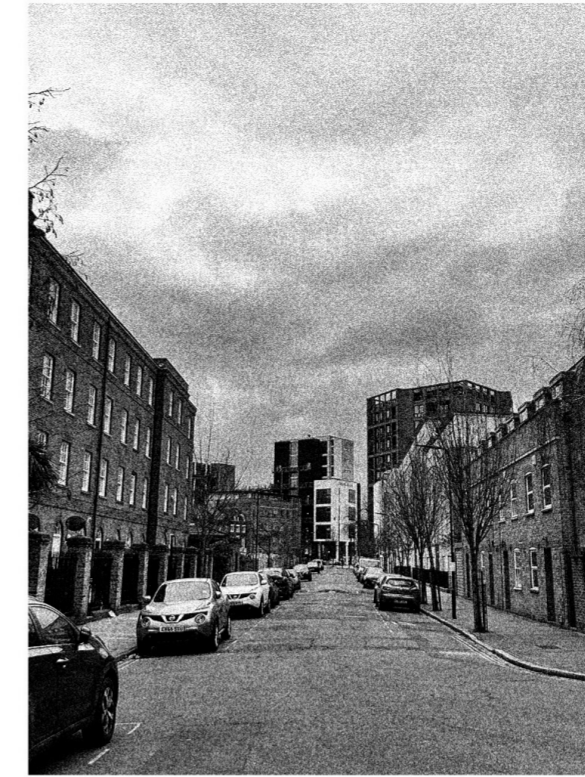


When designing my collages I chose to use a gritty design style to fit in with the surroundings of Hackney, Furthermore, I use images of graffiti and large social housing projects as they are two parts of Hackney which I think are very important. By appreciating the history and culture in Hackney it will help me design a space which is more meaningful to the locals - something that doesn't seem out of place or add to the growing gentrification of the borough.

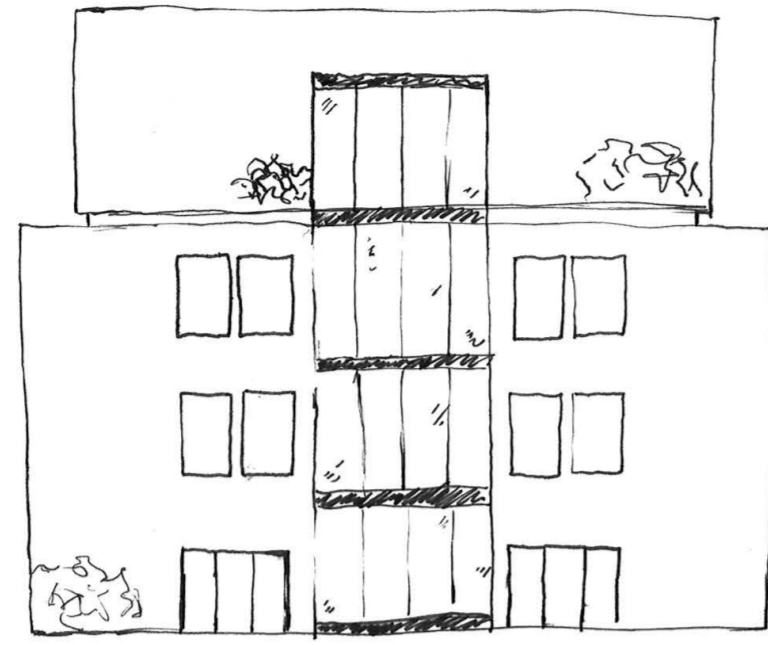
THE SITE:



SURROUNDING AREAS:

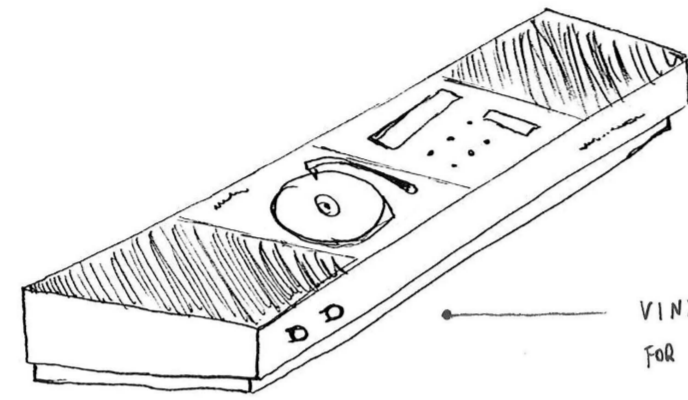


## EXPLORING ELEVATION

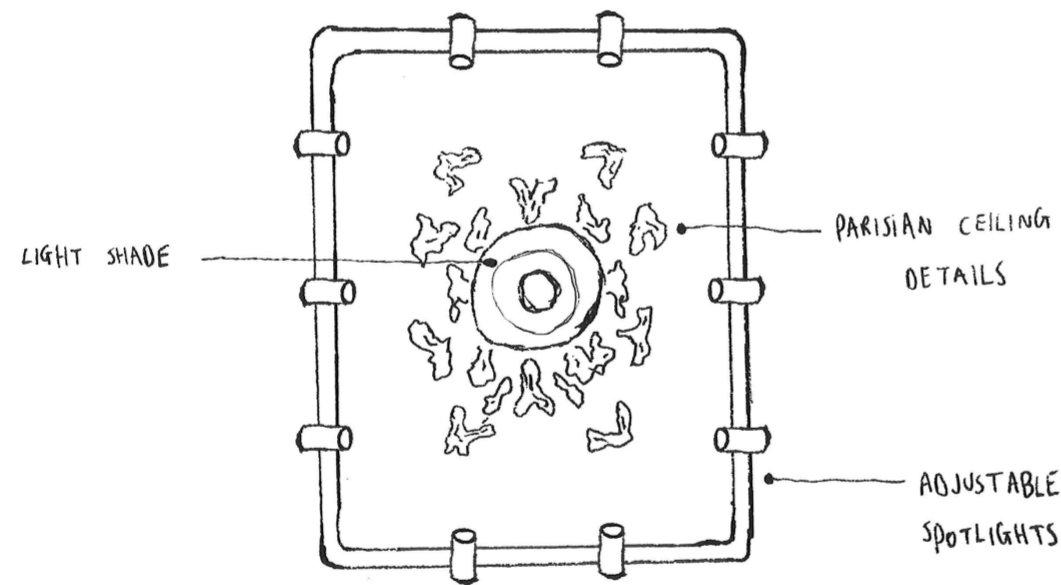


ALLOW GRAFFITI ON WALL?  
LINKS TO HARKNEY ART SCENE

## SKETCH IDEAS



VINYL / SPEAKER SYSTEM  
FOR LIVING AREA



LIGHT SHADE

PARISIAN CEILING  
DETAILS

ADJUSTABLE  
SPOTLIGHTS

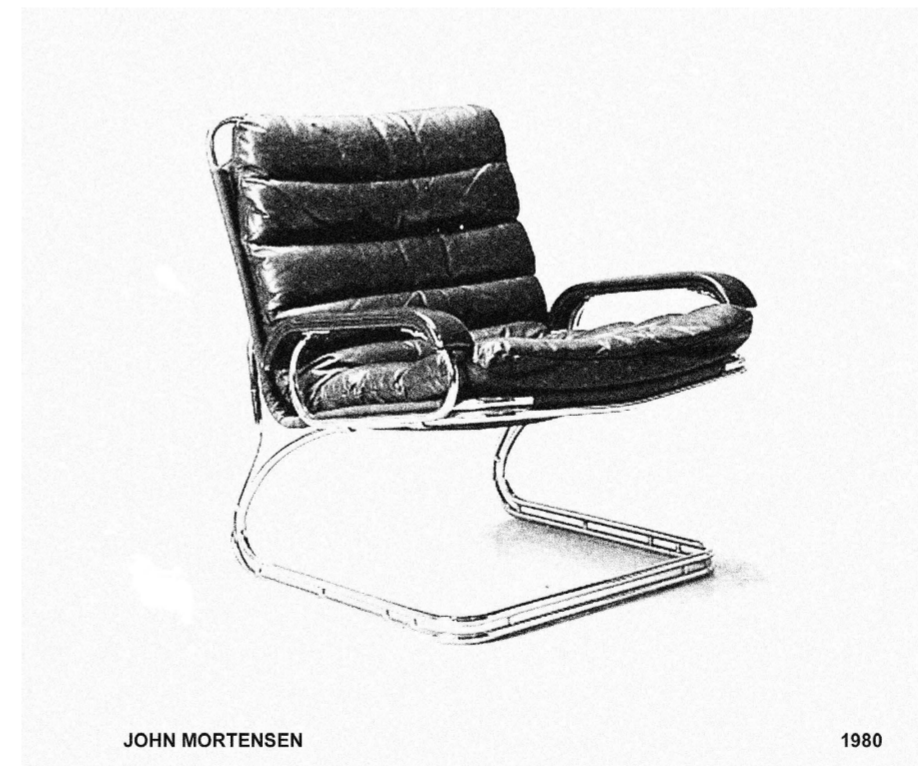
## FURNITURE

When picking the furniture for this project I wanted to focus on functional simplicity, leaving the focus on the artists' work rather than their surroundings. To achieve this I intended to create an almost effortless yet clean design. I chose mainly mid-century furniture for a minimalist and stylish look.

## PRESENTATION ROOM 1



## CURATING FURNITURE



JOHN MORTENSEN

1980



UNKNOWN



MICHEL DUCARROY

1973



MARCEL BREUER

1928

## THE BIG IDEA

During our meeting with Mahler & LeWitt curator Guy Robertson, he asked one question which stuck with me. Why London?

This question made me think about what London has to offer to visiting artists which other places can't. In my opinion, the mixture of cultures around London is something you won't find anywhere else, and ultimately what holds the city together. When focusing on the culture around London specifically in an artistic sense, both fashion and music is what stands out the most to me...

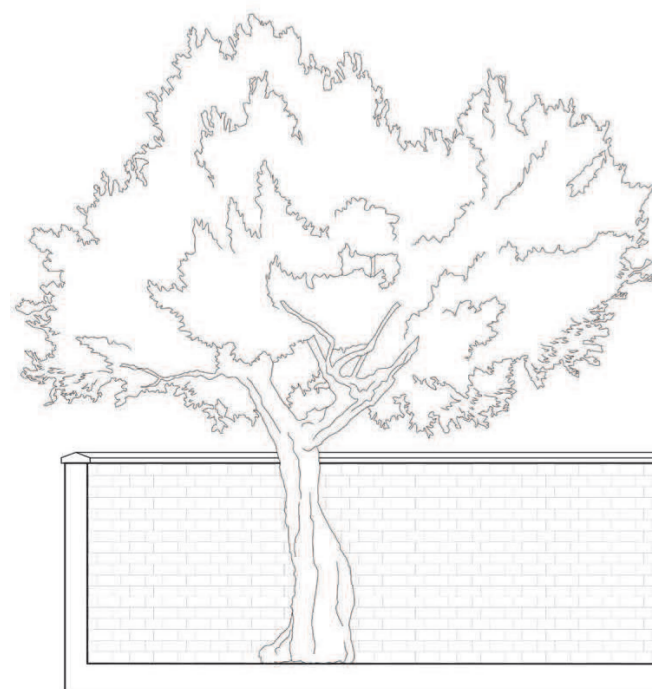
From the Jungle scene in the 90s to the evolution of Grime music in the early 2000s, pioneered by the likes of Skepta and Kano, London's unique sound has always been recognised. Now more than ever, British music is getting recognised on a global level, with artists such as Dave, Stormzy, Jorja Smith etc. all making huge waves in the international music industry.

When talking about fashion, London has always been regarded as one of the leading cities, with huge designers such as Vivienne Westwood, Alexander McQueen and Stella McCartney all being based in the city. Furthermore, with emerging fashion brands such as Corteiz or Cole Buxton all coming out of the streets of London, there is no better time to look at the local fashion scene.

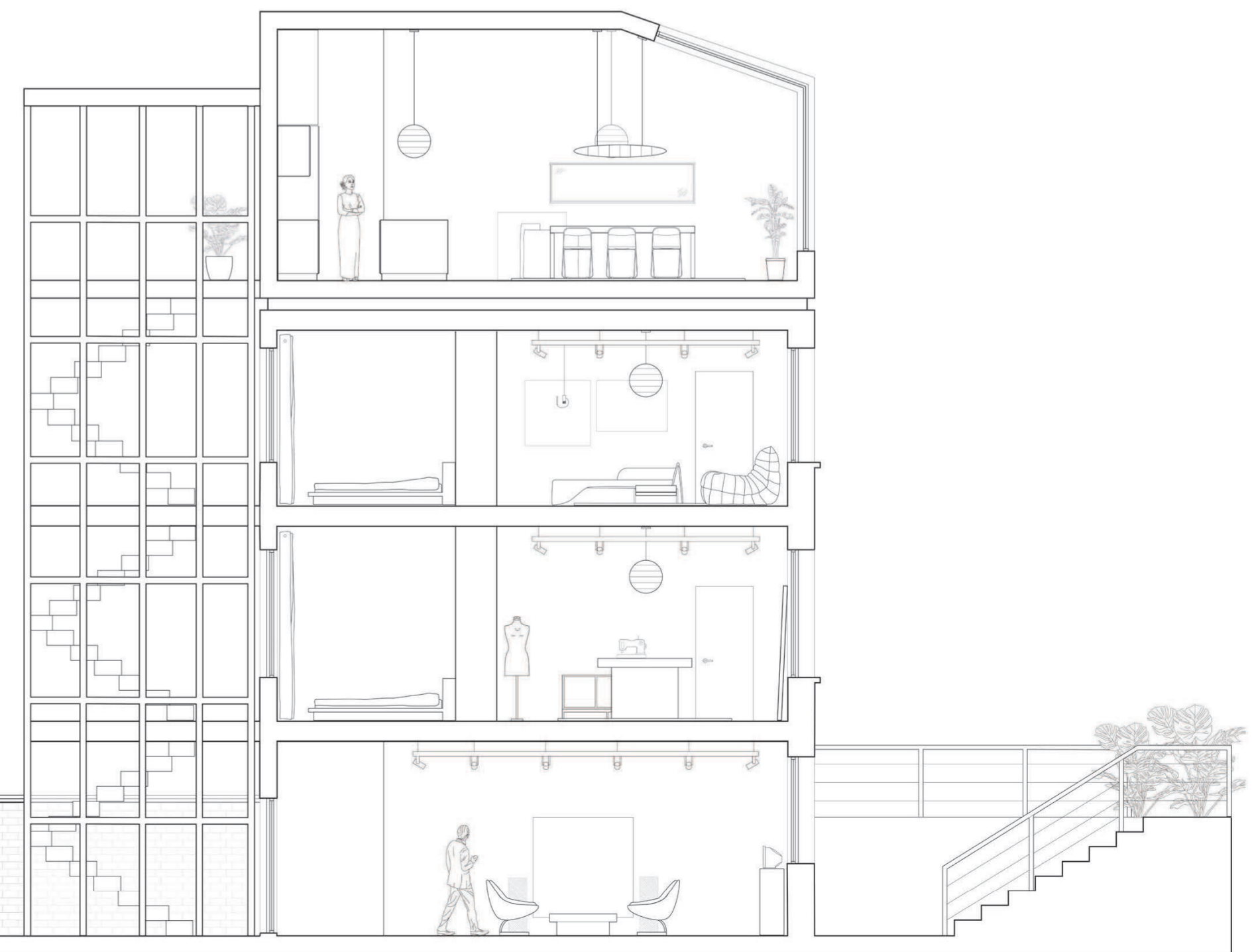
## DEMOGRAPHIC

Hackney is a very diverse borough, with over 40% of the quarter of a million population being from Black and Minority Ethnic groups, and 36% being white British. Like many other London boroughs there is a huge wealth divide. This is even more prominent in Hackney compared to other areas around the city, with huge amounts of gentrification changing the borough completely. De Beauvoir Town, for the most part is a wealthy area, however there are also parts that are less so, such as the De Beauvoir Estate, only a two minute walk from our site - one of the largest council estates still existing in London.

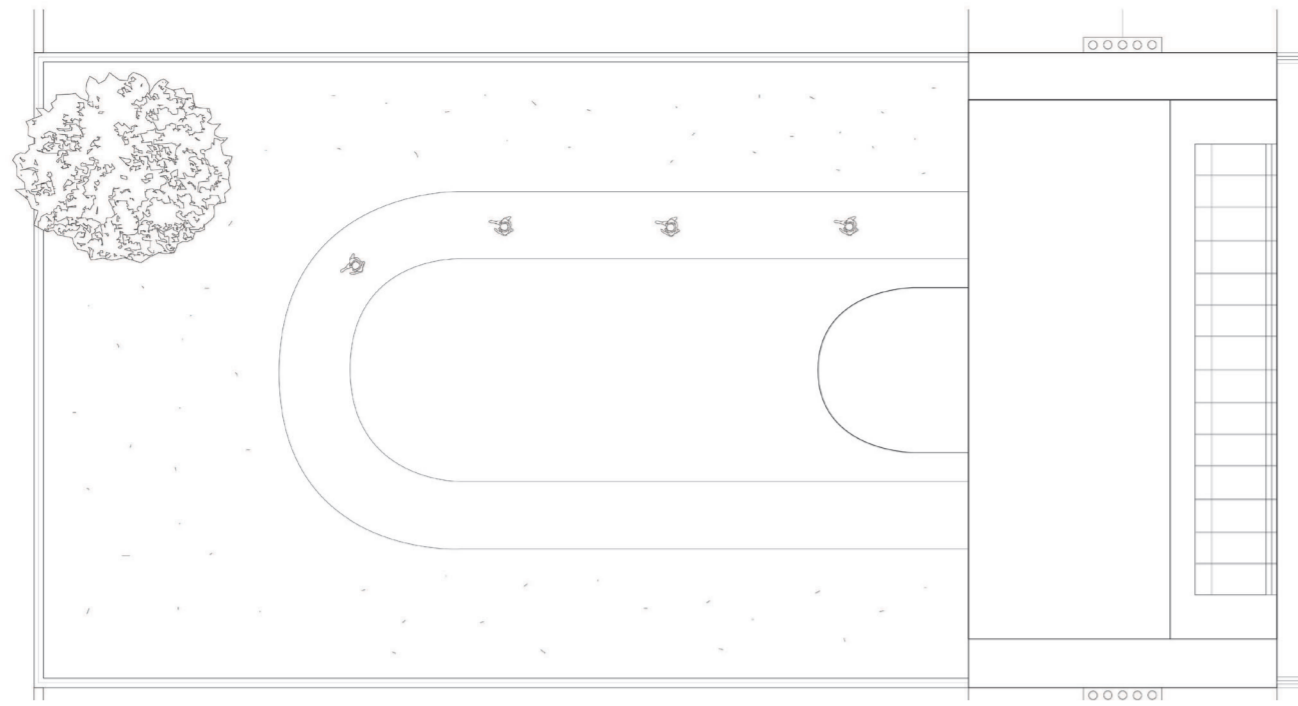
## SECTION 'AA' THROUGH STUDIOS



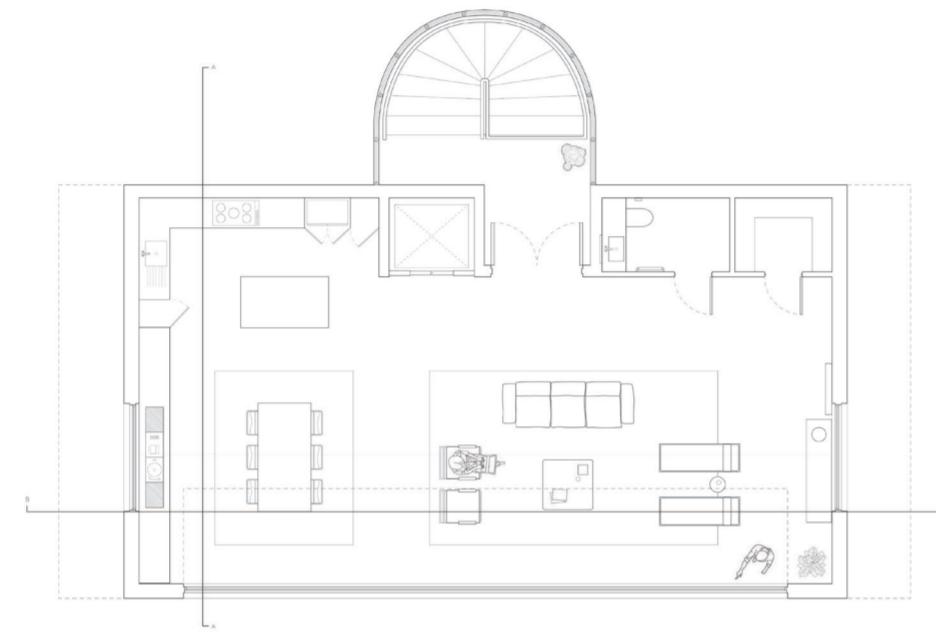
## FASHION STUDIO 1



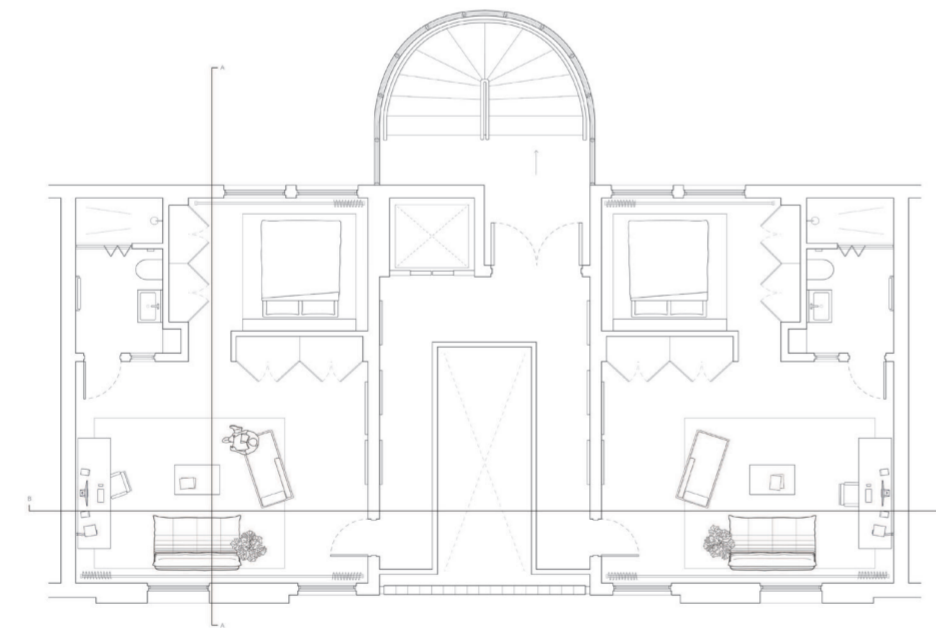
SITE + ROOF PLAN



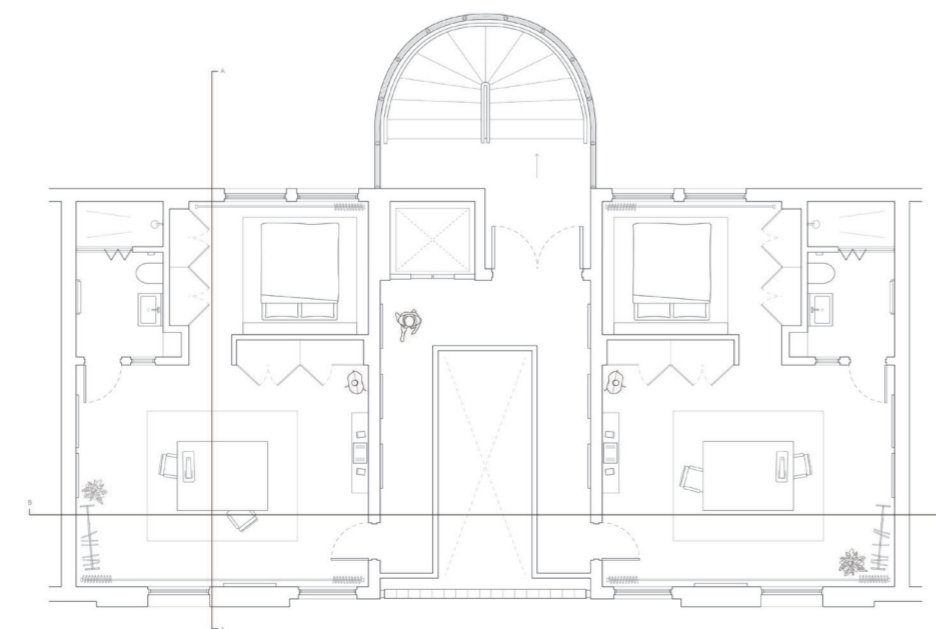
SECOND FLOOR PLAN



FIRST FLOOR PLAN



GROUND FLOOR PLAN



CREATION LAB 1



SECTION BB

