

WELCOME TO...

BATH HOUSE ARMONIJA

*Staffage featured in visuals are lifted from the photographic work of Slim Aaron

80% of today's buildings will still exist in 2050.

The focus of building design is shifting to the interior. Interior design is set to pave the way by reimagining and repurposing the existing and historic, through a contemporary and future lens. As designers, we're entering an era of considered adaptation, aligning existing spaces to our new environment, learning from our architectural stories, whilst writing the next chapter.

ARMONIJA; Maltese. Translation 'harmony'

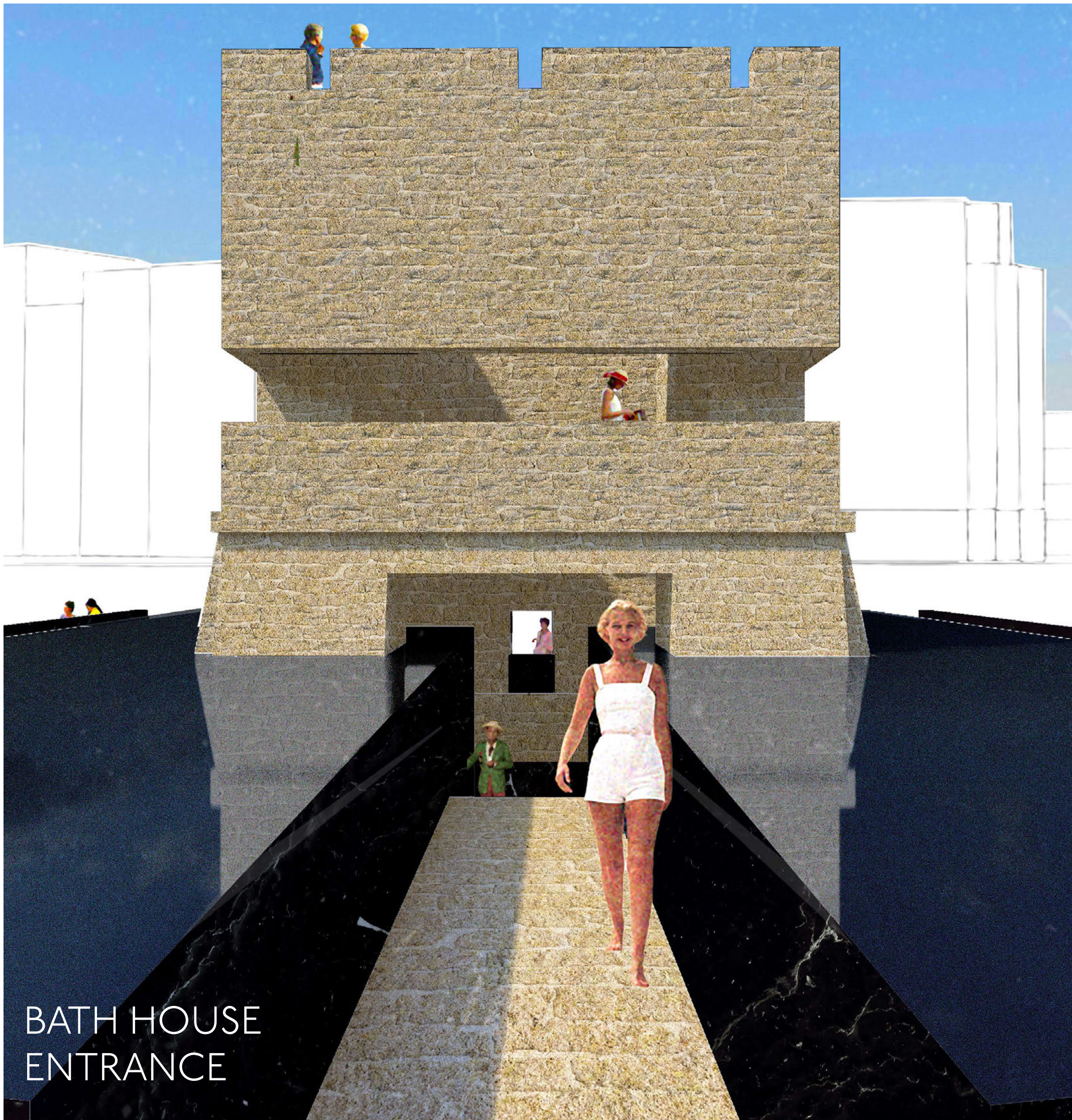
The bath house re-imagines St. Julian's Tower of Silema, Malta, once a relic of war and chaos, now as an **agent of harmonisation**.

Armonija fosters harmony in many forms for the community and visiting public of Silema; **bodily, inner, social & natural harmony**.

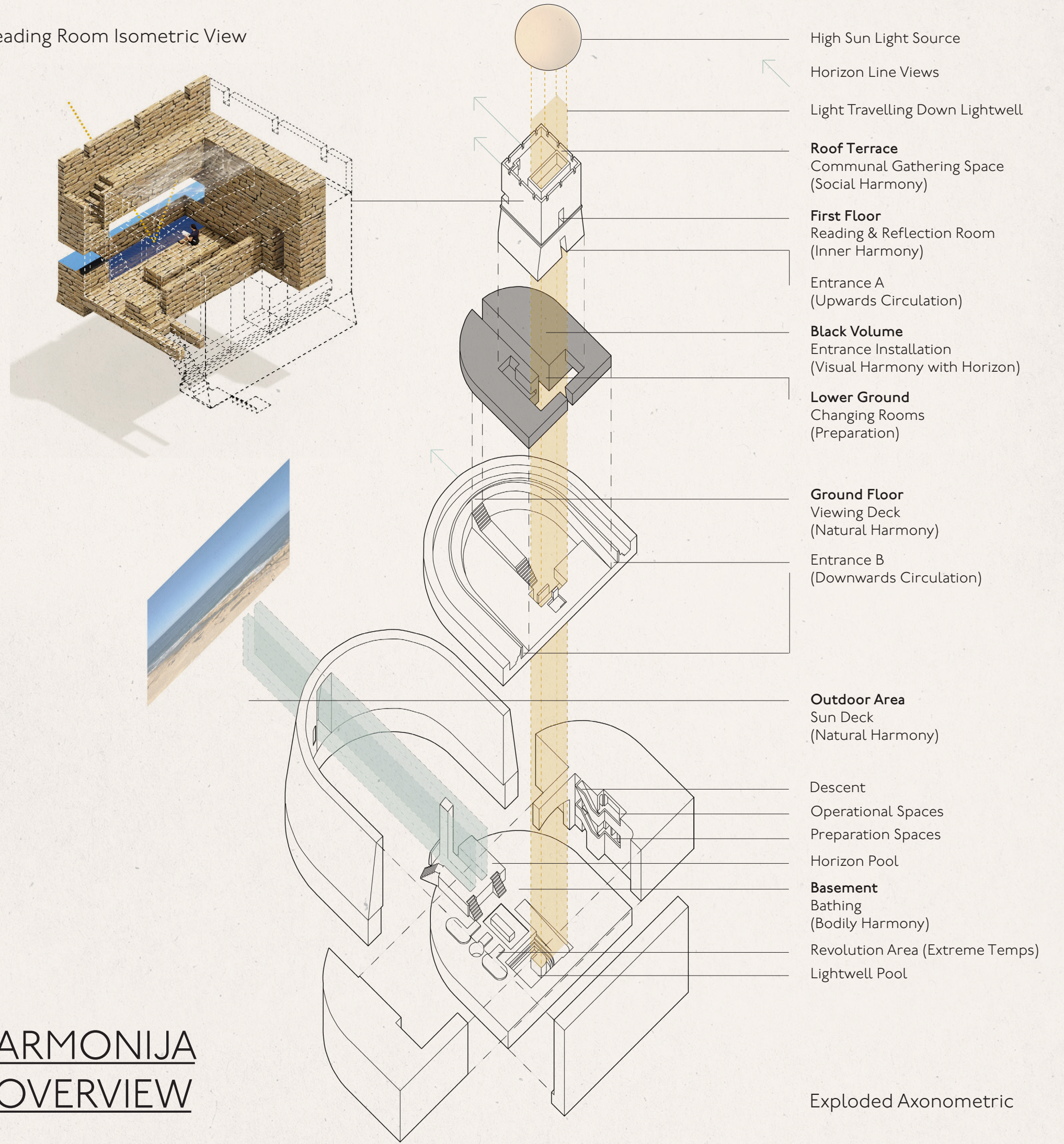
The designs' openness to the elements means the bath house sits as an almost **passive component of the existing landscape**.

HORIZON POOL

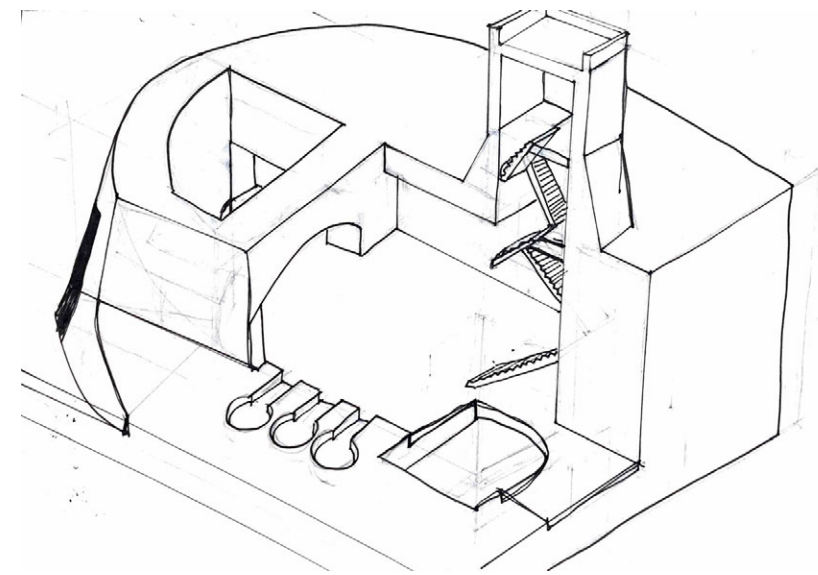




Reading Room Isometric View



ARMONIJA
OVERVIEW



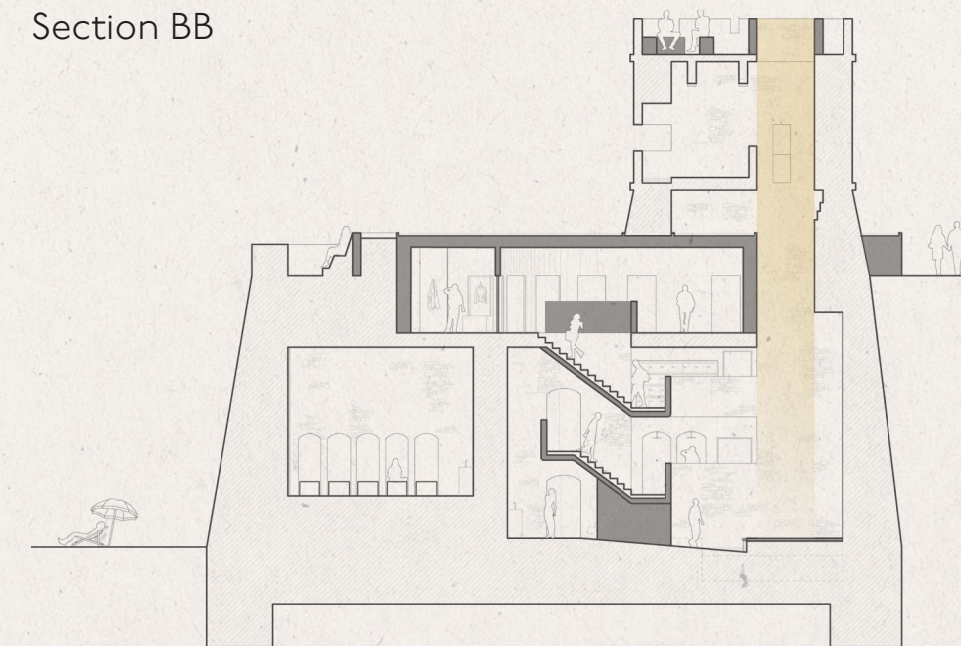
Sectional sketch of the site's verticality & basement space



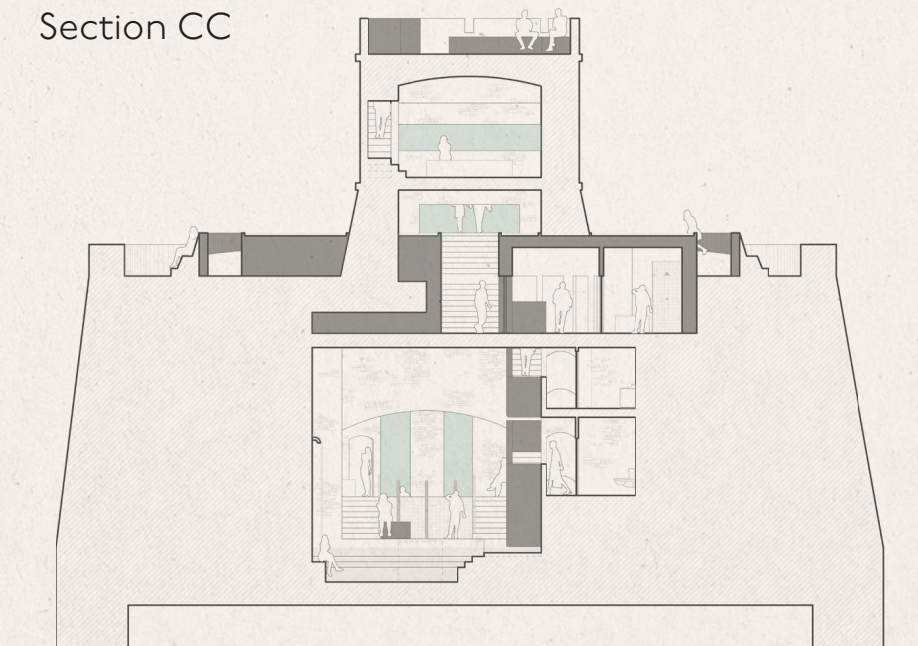
1:50 sectional fragment cast in plaster for spatial analysis

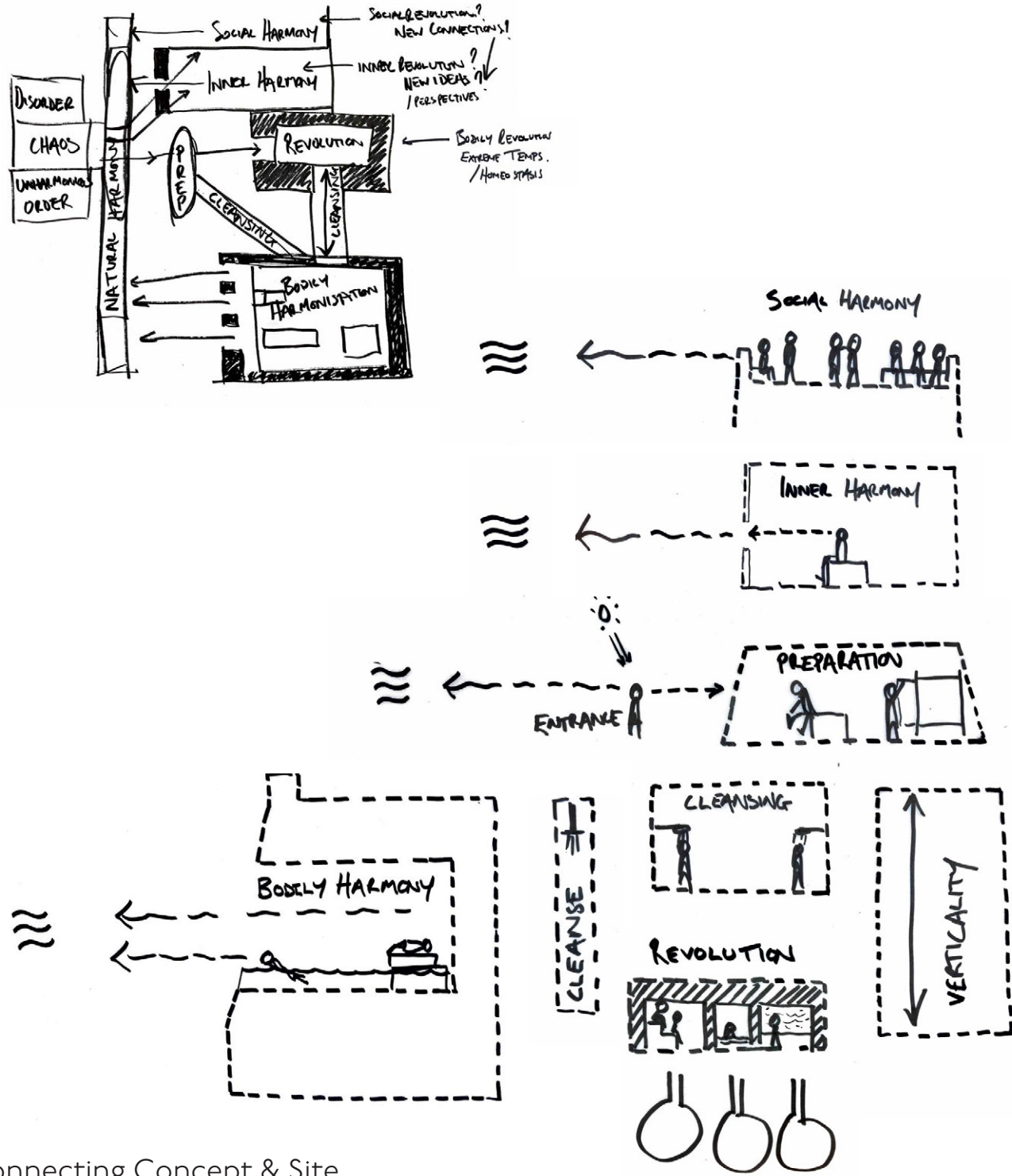


Section BB



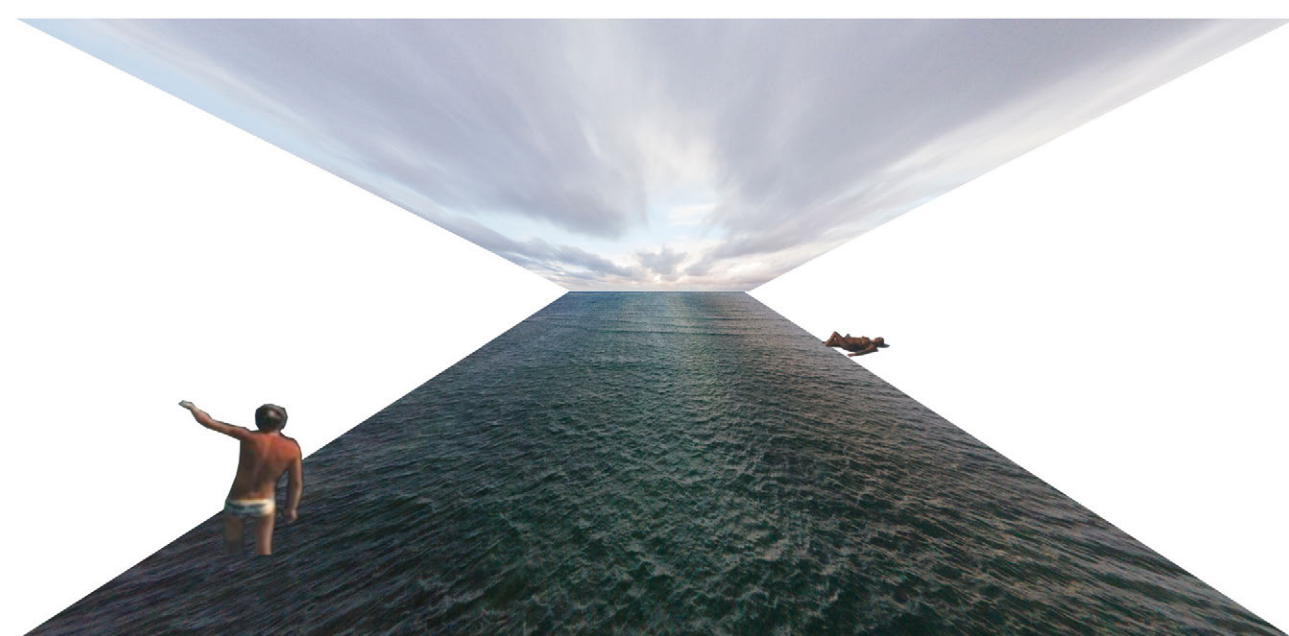
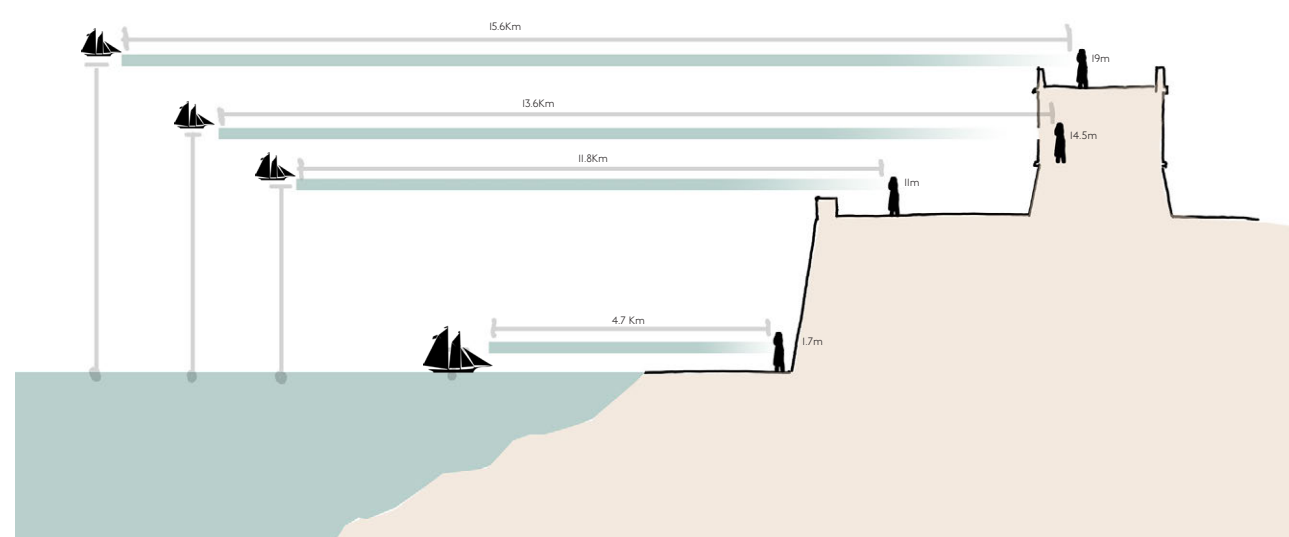
Section CC





Connecting Concept & Site

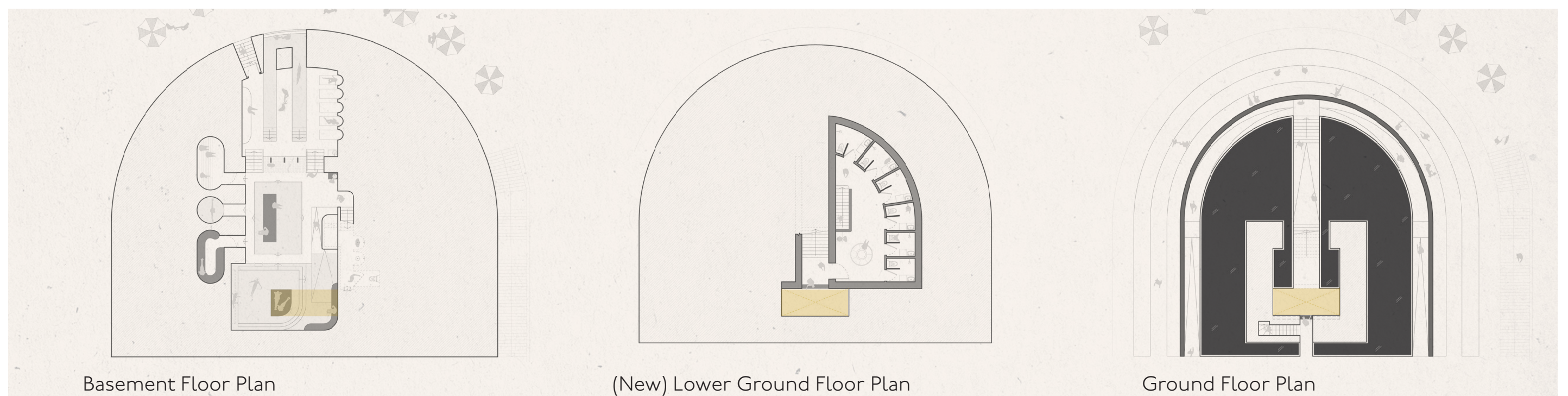
Horizon Line Analysis



Collage explorations of stretching infinite horizons.

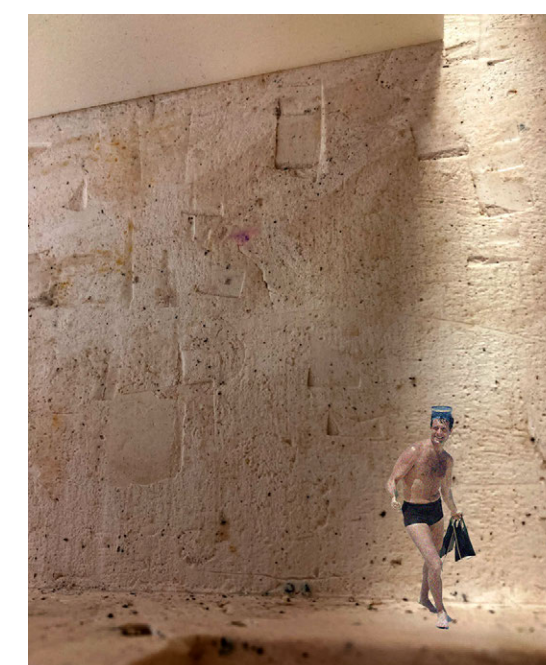
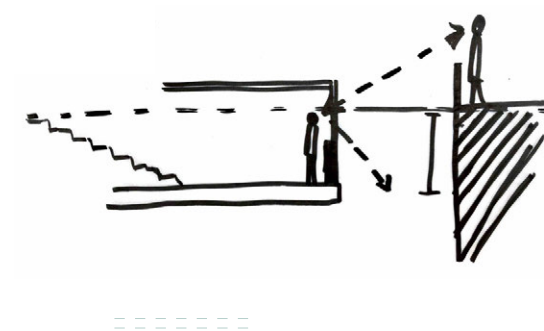
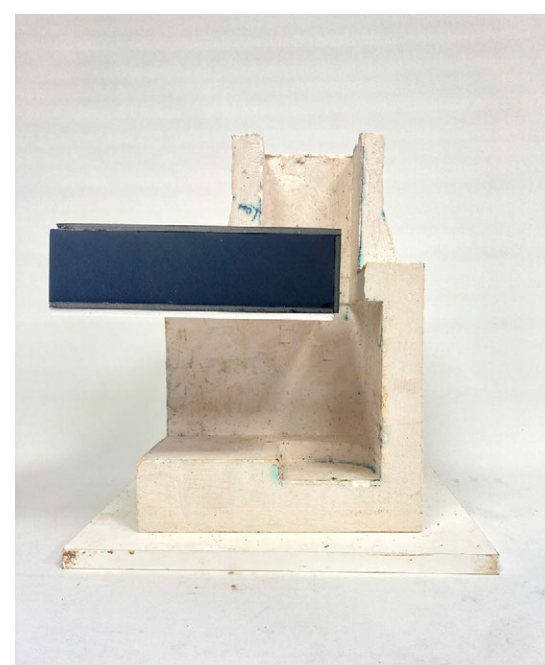
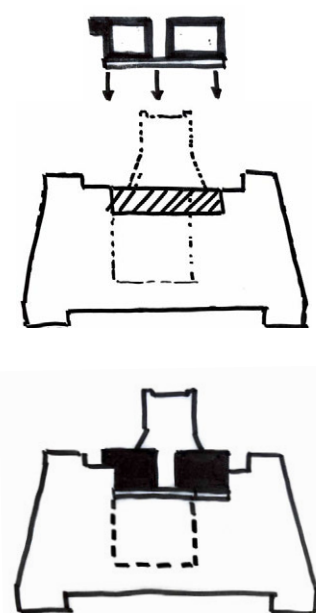
HORIZON VIEW ENTRANCE

The horizon is a point where elements seemingly converge in harmony. An eye-line across water can appear flat, reflective and infinite. The horizon line is experienced at different scales, according to the height of the eye line above sea level. At each point of harmonisation in the design there is an interaction with the horizon line, natural harmony.



LIGHTWELL POOL

The reflective volume at entry doubles to house lower ground floor changing spaces. Only half sunk into the ground floor, it protects the dramatic ceiling height of the basement. Partially removing the existing ground floor gives an opportunity for a lightwell through the entire verticality of the tower section. This void can be experienced at every level, bringing a thread of harmony to the building design. Opting for one unisex changing space with private rooms, rather than separate male and female areas, reduces the embodied energy of needing to excavate more.

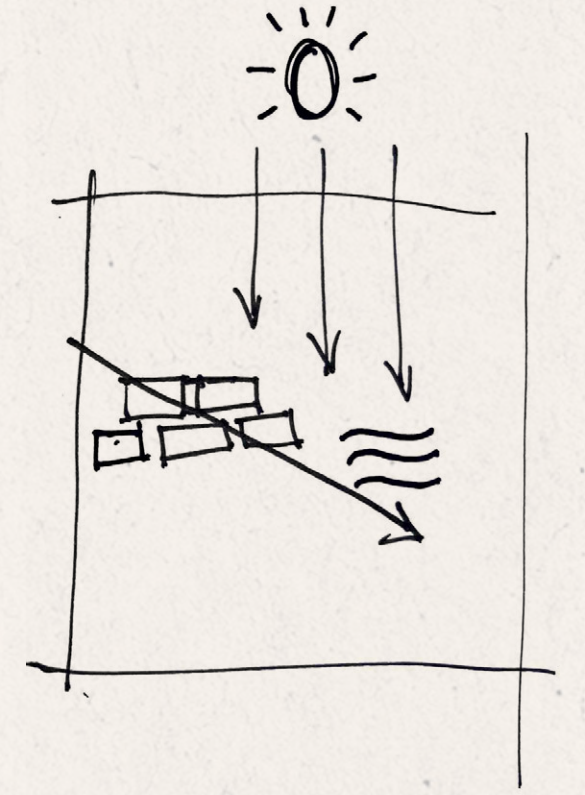
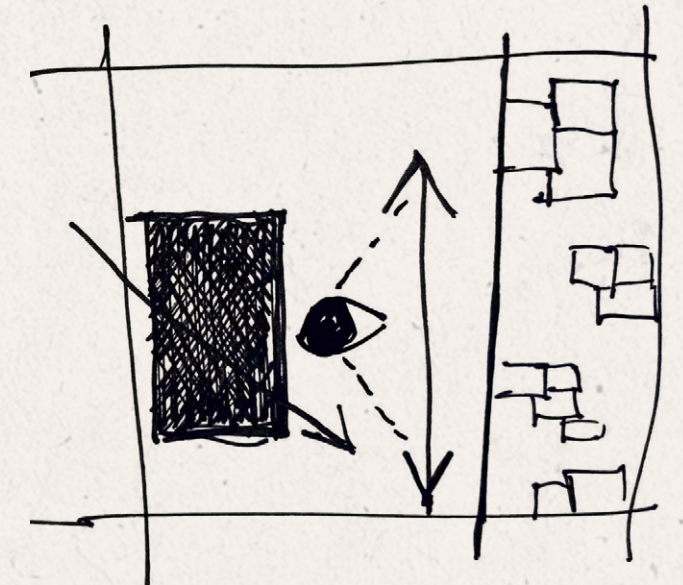
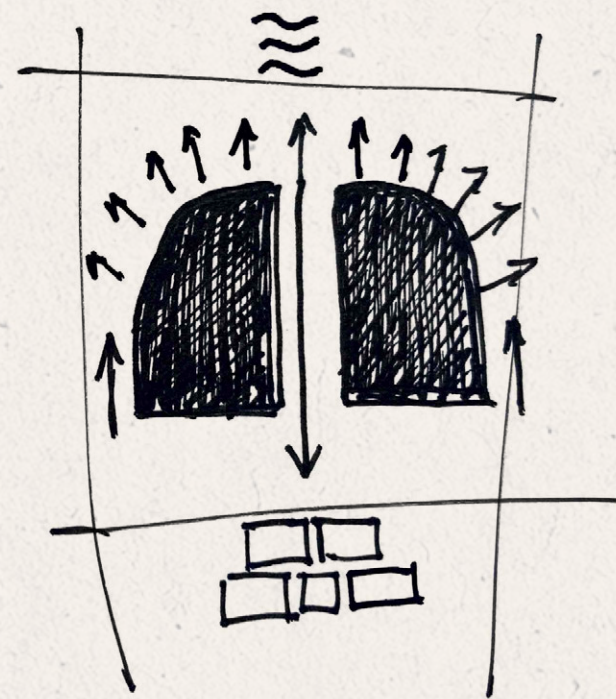
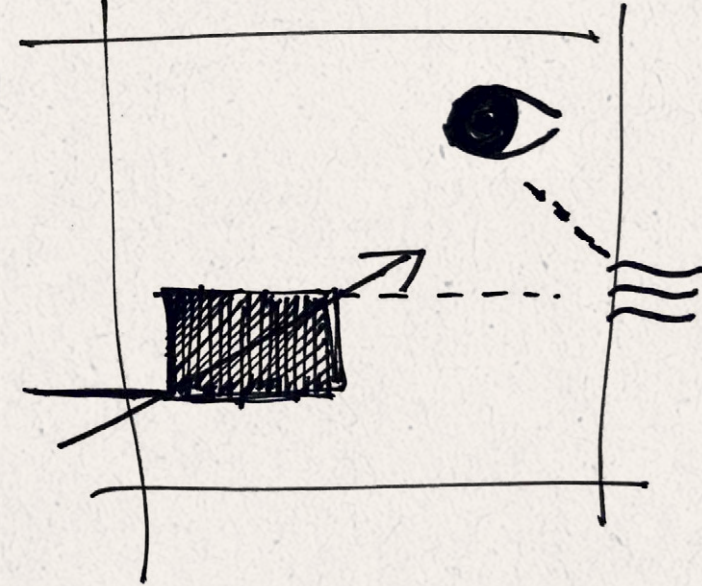
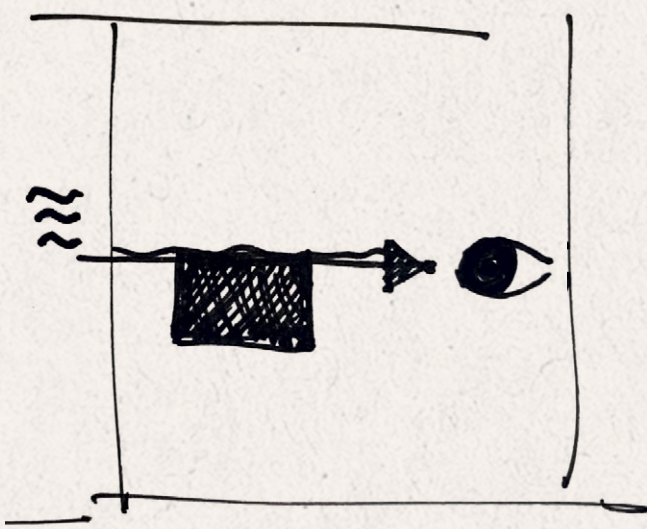
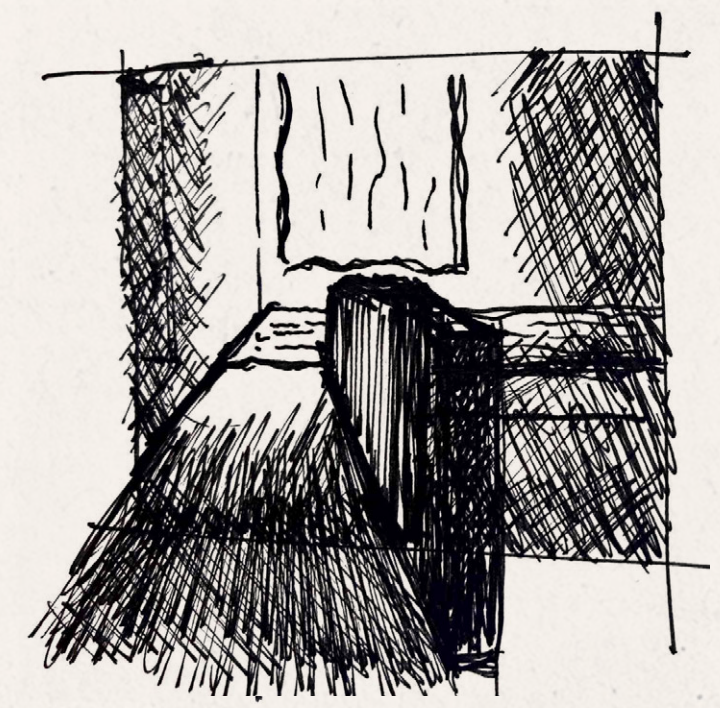
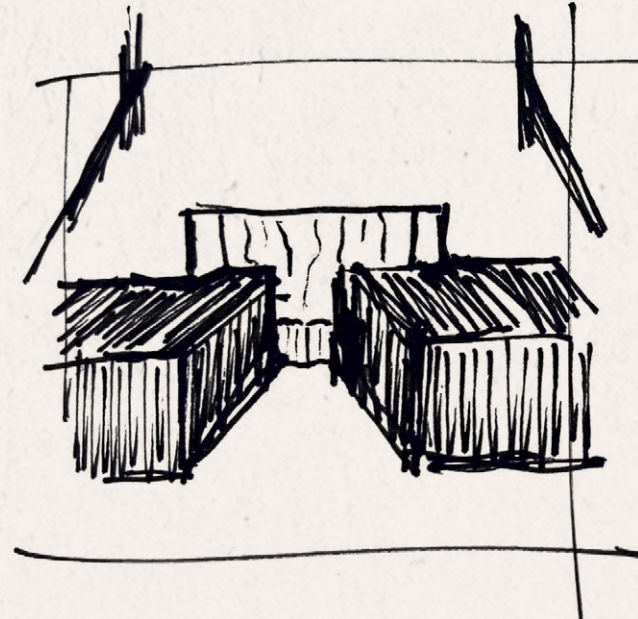
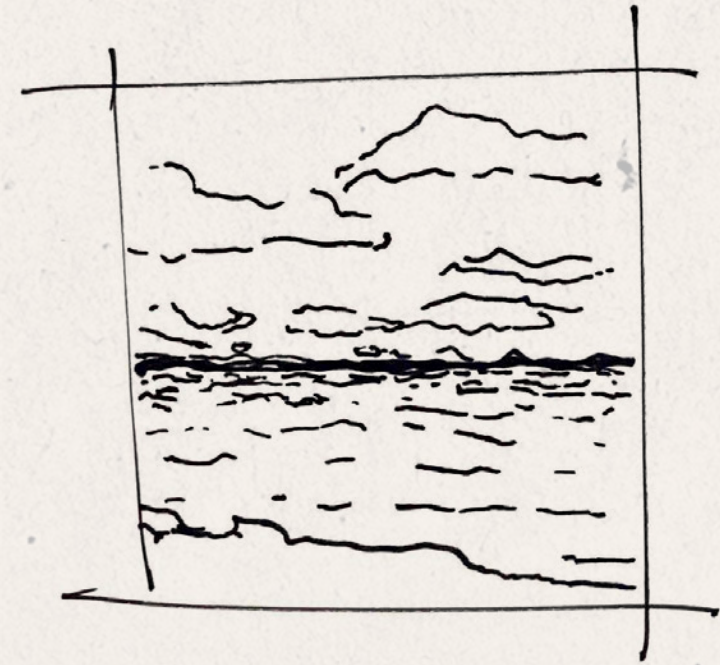
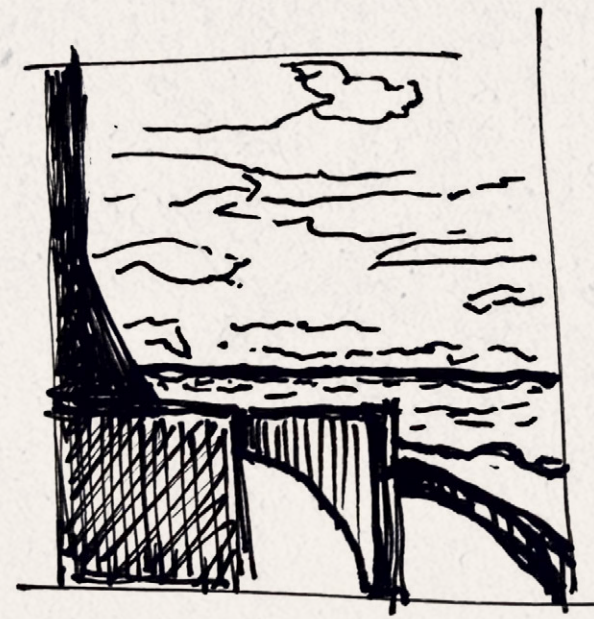


Original Limestone Walls

Lower Ground Floor Development

Creating a void & lightwell through the entire verticality of the tower section

A SKETCH JOURNEY



Ascend through the volume

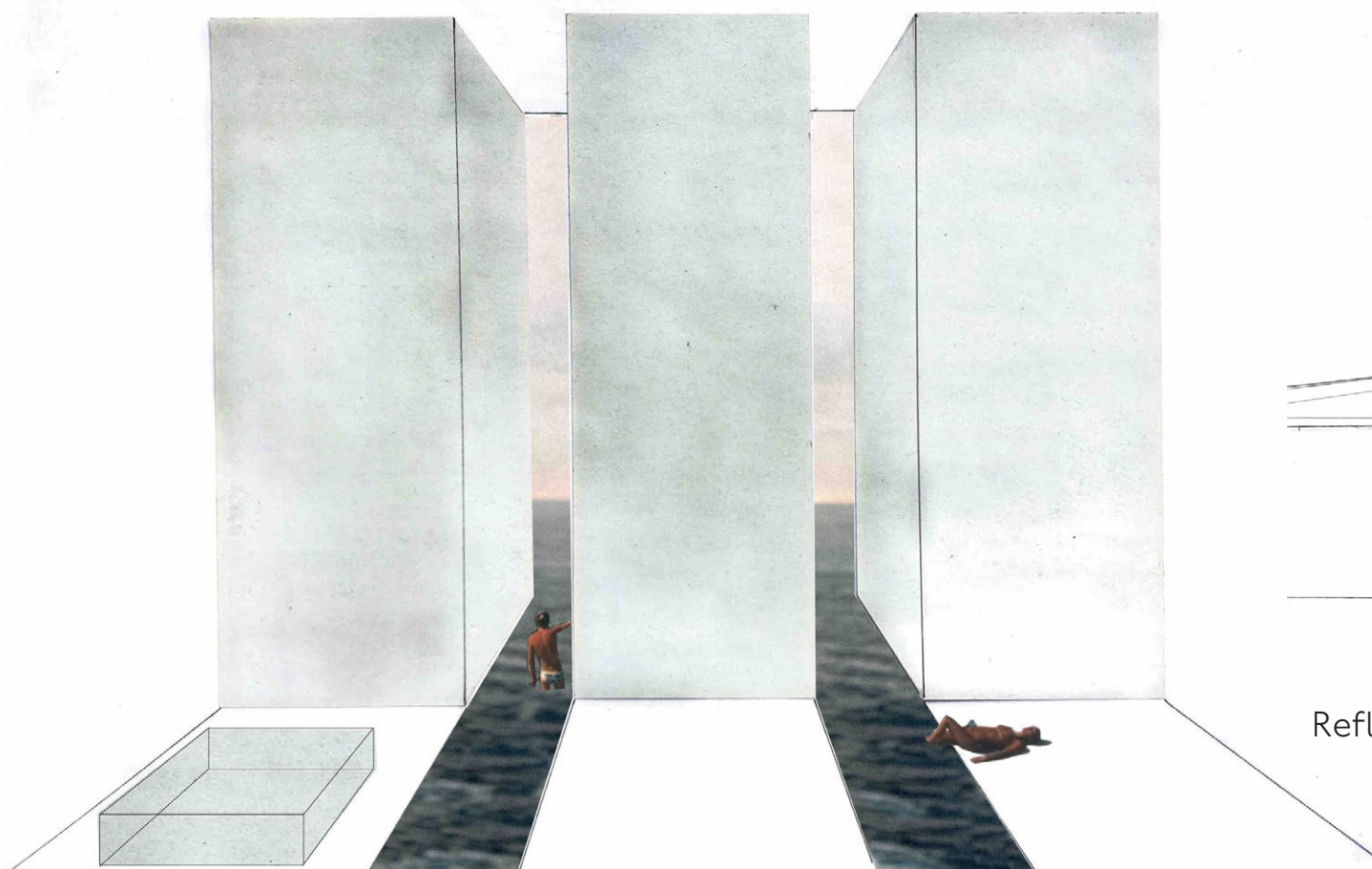
Face out to the horizon

Descend into the building through the volume, away from the sea

Views up & down through the void at entrance level

Gradual descent into a sunny pool at basement level

COLLAGE DEVELOPMENT



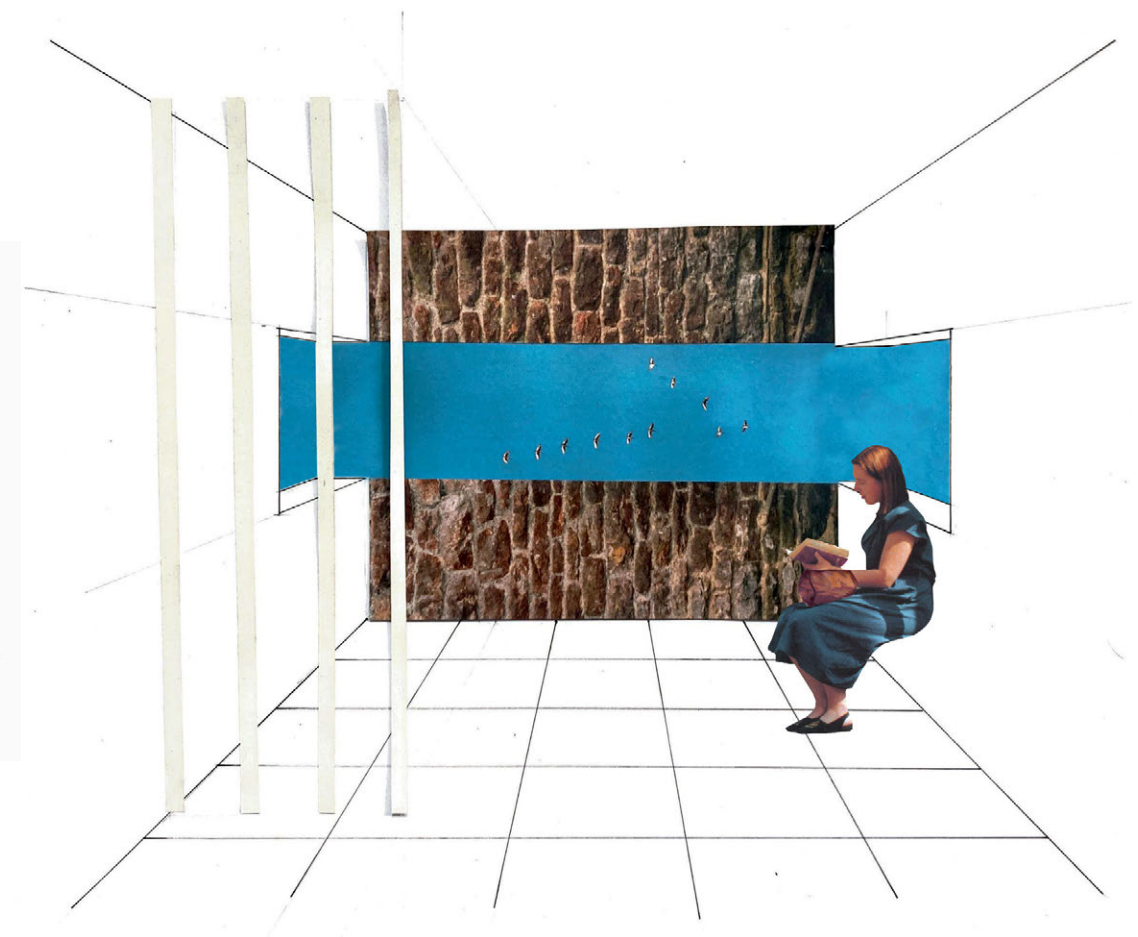
Horizon Pool



Reflective Volume & Horizon Line



Material Collage



Reading Room