

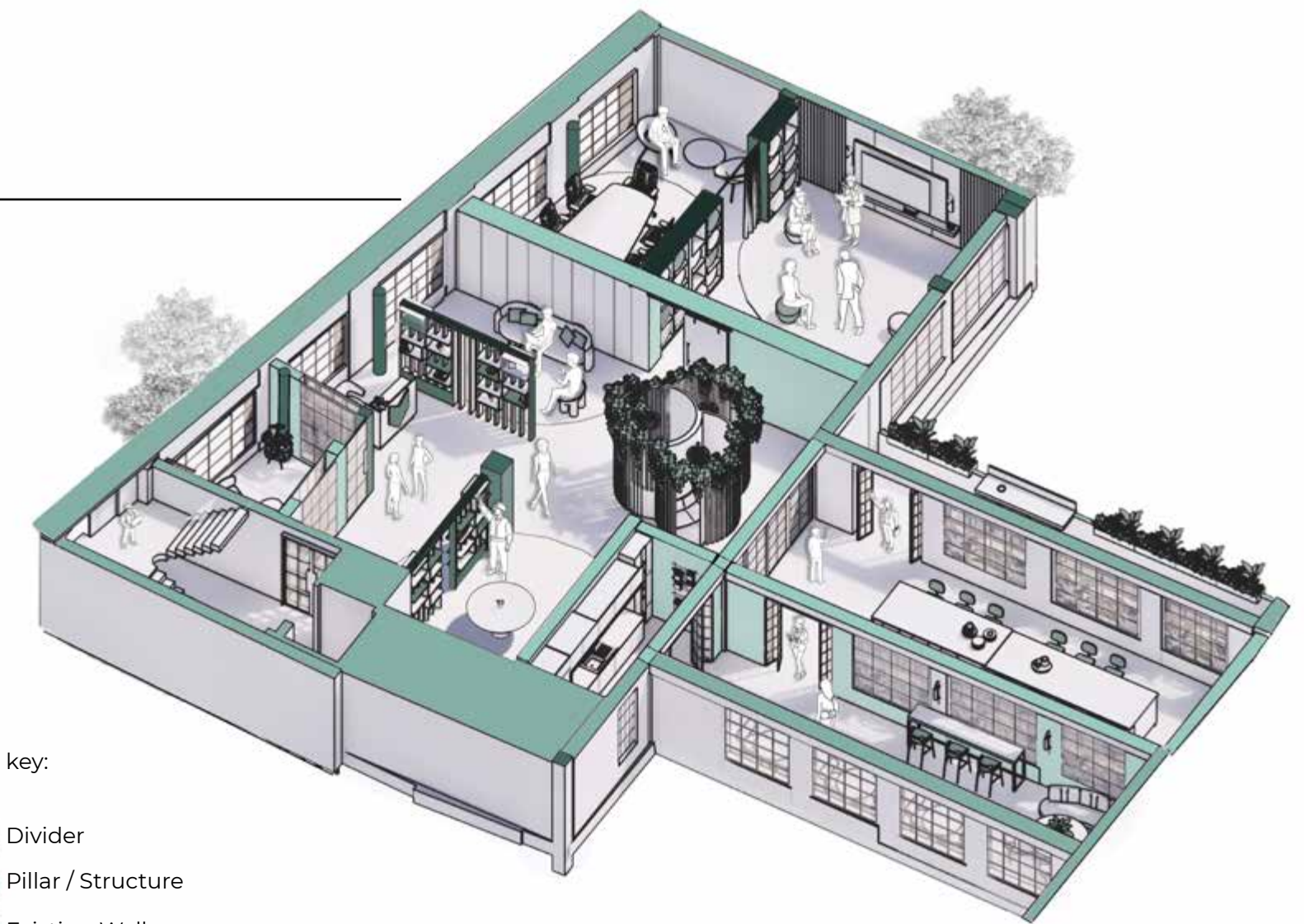
Thirdway Office

Interior Future Award Submission

This office project rethinks what a sustainable workplace can be for young professionals and how it can adapt to each individual and the future office workspace. It is designed within a reused London Building in St Johns Street, which maximises natural light, encourages social interaction, supports mental and physical wellbeing. From organic elements on the roof terrace to modular zoning and space efficient layouts, every aspect is designed to reduce reliance on artificial systems and improve user experience.

The design contains flexible spaces like client lounges, private pods, all weather gym, rooftop cinema (which can also be used as an outdoor presentation space or karaoke area during events), ensuring that work and rest coexist. The strategic use of colour enhances productivity and mood, replacing unnecessary tech interventions.

This design project embraces a low-impact, people first design philosophy, promoting sustainability through spatial generosity and future adaptability.



key:

- Divider
- Pillar / Structure
- Existing Walls
- Added Walls

Axonometric Plan - Flexible Future Workspace Strategy



Social Area Render



Facade Sketch - Existing Building Frontage

Research & Development

Pod design provides a flexible, semi-private retreat



Genesis Image



Old vs New Collage
Aiste Sapaviciute
Interior Designer



Key:

- 1. Planting
- 2. Wooden lights
- 3. Pin Wall - Fabric pin wall
- 4. Rounded seating
- 5. Circular table
- 6. Carpet flooring - Coloured
- 7. Wooden pannels



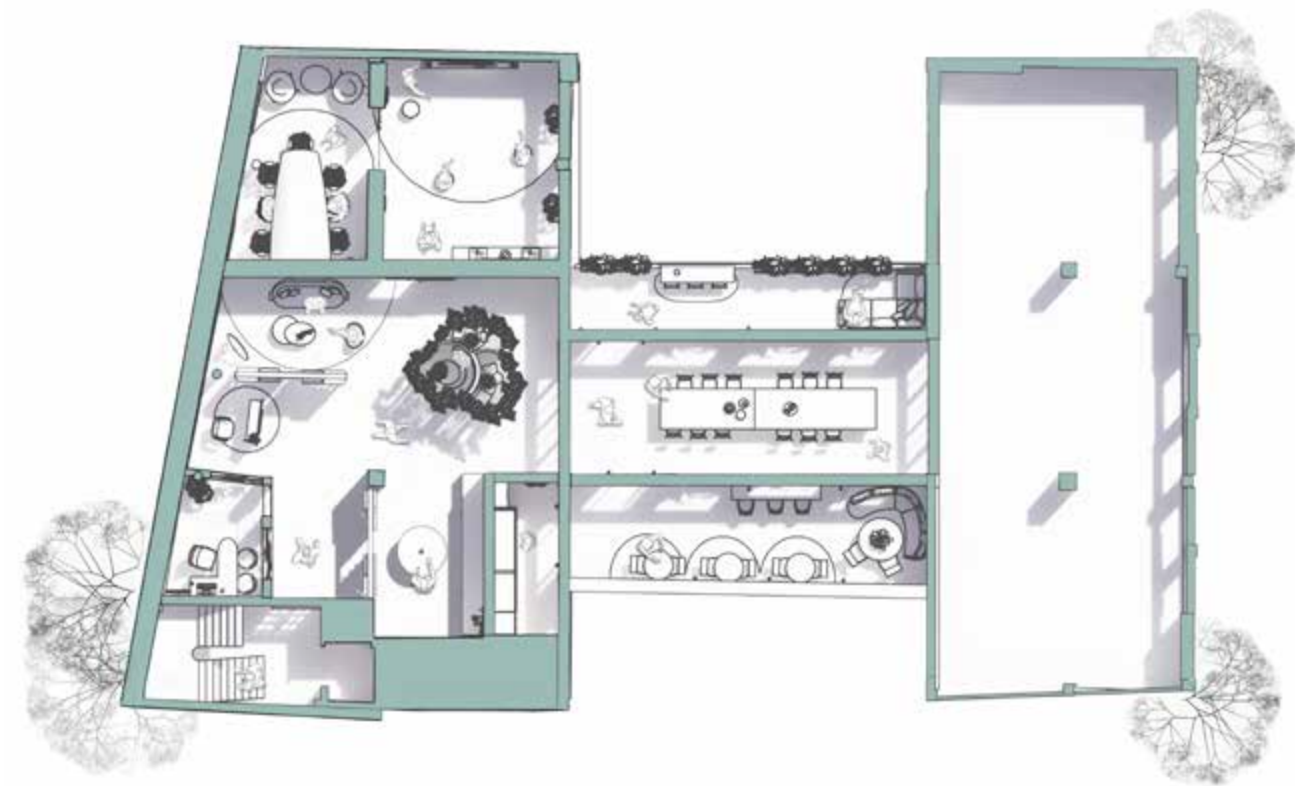
Wooden Pannels



Patterned Glass

Workspace Level 03

In this workspace, colour replaces traditional walls to define distinct zones, creating an open yet purposeful environment.



3D Level 3 Plan



Pitch Room



Kitchen



Lounge



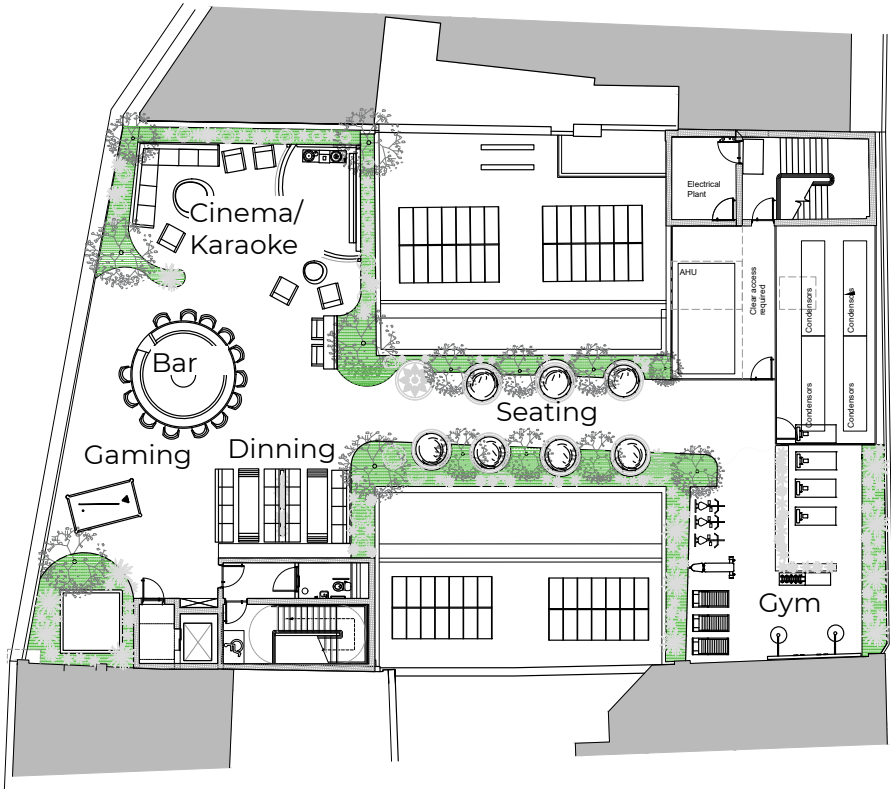
Meeting Room



Material Room

Roof Terrace Level 04

This roof terrace design redefines flexibility and innovation, seamlessly blending adaptable spaces to create an inspiring urban retreat.



01 LEVEL 04 PLAN
1:100



Balcony



Bar Space



Heart of Roof Terrace

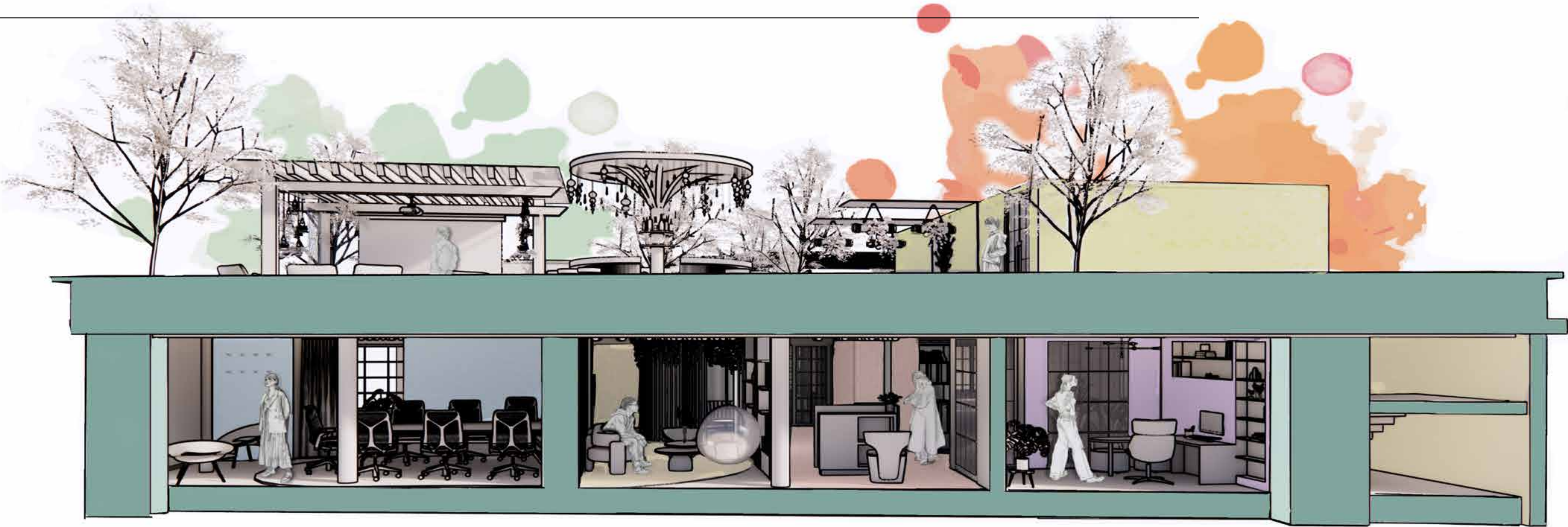


Event Space



Gym Area

Final Propsosal & Climate Considerations



3D Section



Sustainable Design



Passive Design



Adaptive Reuse



Natrual System



<https://youtu.be/P5kJeTWDooY?si=kZzRzDx4xlL2Matd>
Scan to watch the anomation walkthrough



Bamboo



Rammed Earth



Reclaimed Wood



Cork



Richlite



PCM



Old Industrial Glass Panels



Mycelium