

TOWER 58

LANA RUSSO

BRIEF

THIS PROJECT BRIEF INVESTIGATES HEDONISM AND EXPLORING THE PURSUIT OF PLEASURE IN THE UNIQUE SEA-SIDE SITE OF SLIEMA, MALTA. THIS BRIEF IS ABOUT CURATING A DESIGN FOR A CLUB ON THE SEAFRONT.

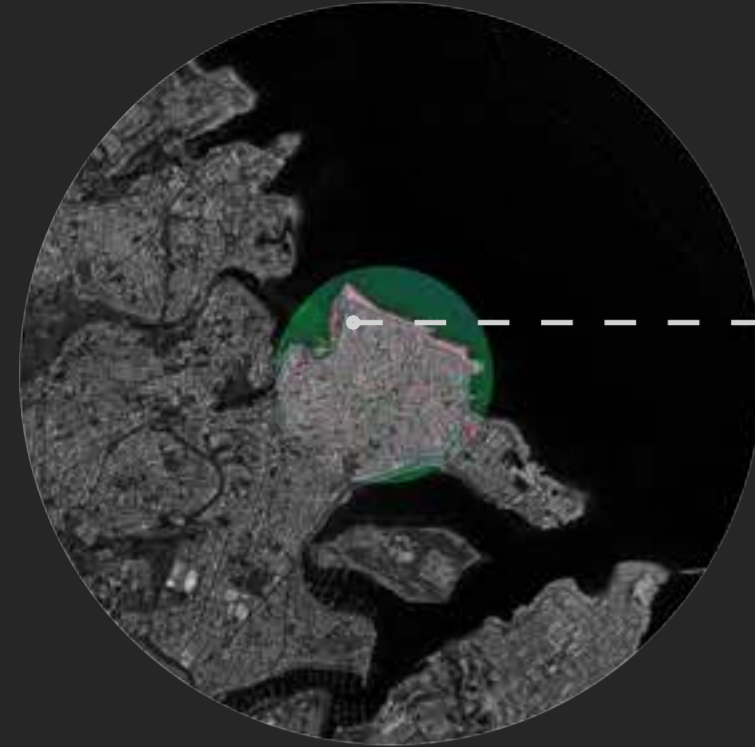
THE SITE IS A HISTORIC STONE WATCHTOWER; ORIGINALLY UTILISED AS A SITE OF NAVAL SURVEILLANCE BUT NOW A REDUNDANT HOLLOW DEFENSIVE FORT, WHICH SPANS OVER AN EXAGGERATED LEVEL CHANGE OF 10M. ON ROAD LEVEL, THE SITE IS SURROUNDED BY WATERFRONT HOTELS AND RESIDENTIAL PROPERTIES AS WELL AS VEHICLE AND PEDESTRIAN INFRASTRUCTURE. THE SITE THEN DRAMATICALLY DROPS IMITATING A CLIFF EDGE TO THE BEACH LEVEL BELOW

THIS BRIEF IS ABOUT ENGAGING WITH THE DRAMATIC SITE SECTION TO CREATE AN INNOVATIVE AND CHARMING BEACH CLUB. THIS SHOULD BE SOMETHING TRULY HEDONISTIC FOR PARTY PEOPLE. OUR CHOSEN STRUCTURE IS A HISTORIC STONE WATCHTOWER; ONCE THE SITE OF NAVAL SURVEILLANCE BUT NOW A REDUNDANT HOLLOW DEFENSIVE FORT. WE WANT TO SEE YOUR PROPOSITION FOR 'HAUTE HEDONISM' INHABIT THIS TOWER SITE; FOR THE ADVENTUROUS VISITOR TO ENJOY AN EXPERIENTIAL ESCAPE.

THIS SHOULD BE A BEACH CLUB LIKE NO OTHER, BUT TAKING CULTURAL REFERENCES FROM MANY CULTURES, IDEAS OF HEDONISM AND ESCAPE. HEDONISM CAN OFTEN HAVE SINISTER AND DARK CONNOTATIONS BUT WE CHALLENGE YOU TO RE-THINK THIS IN TERMS OF YOUR OWN RESEARCH AND THOUGHTS ON 'HEDONISM'.



SITE ANALYSIS



SITE LOCATION: SLIEMA, MALTA



ST JULIANS TOWER



▼ PUBLIC TRANSPORT WITHIN 0.4KM



▼ ACCOMODATION WITHIN 0.65KM



WEATHER

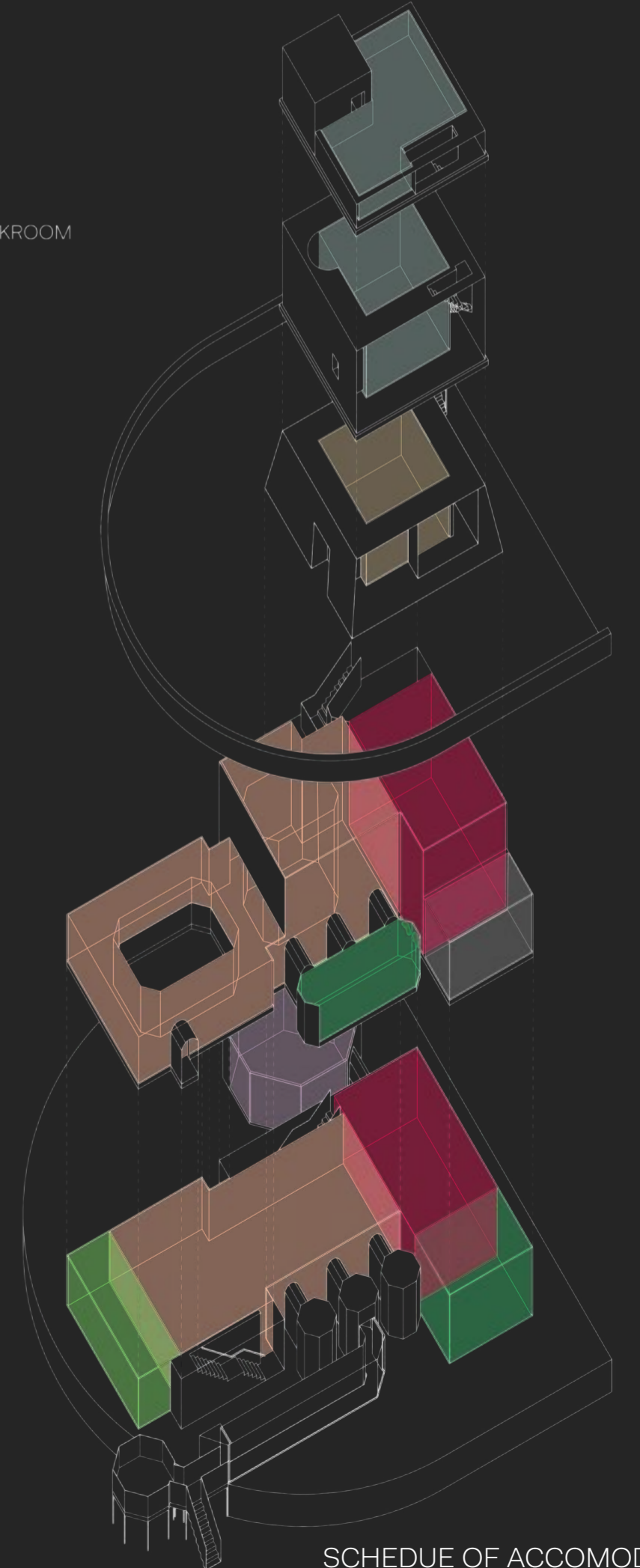


PHOTOS OF SITE AND SURROUNDINGS

ETHOS OF PROJECT

CLUB SPACES ARE FOR DANCING, ENCOUNTERS, LONG TOILET VISITS, EXPLORING, RELAXING AND FREEDOM. THE WHOLE EXPERIENCE OF CLUBBING IS DOWN TO THE DESIGN. WHERE DO PEOPLE STAND? HOW DO PEOPLE MOVE? WHO IS IT BUILT FOR? WHERE CAN YOU LEAVE YOUR THINGS? IS THE DESIGN OF THE SPACE MEETING THE EXPERIENCE EXPECTATIONS? WHEN WE THINK OF A CLUB SPACE THERE ARE MULTIPLE SIDES TO IT: THE MATERIAL PART (WHAT YOU SEE), THE SOCIAL ASPECT (HOW PEOPLE BEHAVE, INTERACT AND MOVE), AND THE POLITICAL ASPECT (THE HISTORY AND SOCIOLOGY) THESE ARE ALL LINKED AND THE EXPERIENCE RELIES ON THE COORDINATION. TO SOME PEOPLE, A CLUB IS SIMPLY A BUILDING. TO OTHERS, THE BUILDING IS SECONDARY TO THE MUSIC AND PROGRAM THE CLUB IS HOME TO. A THIRD VIEW IS THAT A CLUB IS LESS DEFINED BY SPACE AND PROGRAMMES, BUT BY ITS ETHOS. IN REALITY THERE IS NOT A SINGLE IDEAL CLUB EXPERIENCE, AS SOME IDEAL EXPERIENCES ARE NOT OTHERS. IN RESPONSE TO THIS, THE ETHOS OF TOWER 58 IS TO PROVIDE A SAFE AND COMFORTABLE UNDERGROUND MUSIC VENUE BASED AROUND ELECTRONIC DANCE MUSIC (EDM), WHICH AIMS TO CATER FOR DIFFERENT DEMOGRAPHICS OF PEOPLE AND TO BE A VENUE WHERE PEOPLE ARE ABLE TO HAVE CLOSE TO THEIR IDEAL RAVING EXPERIENCE WITH NO JUDGEMENT OR STRESS. THIS VENUE WILL PUT MALTA ON THE MAP FOR A NEW EDM SCENE.

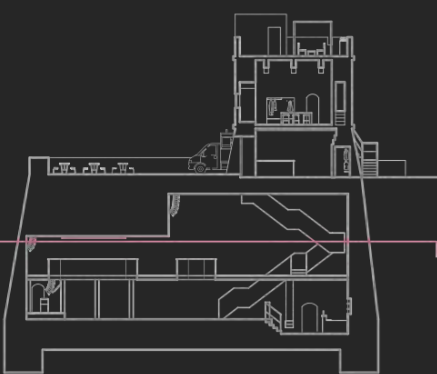
- STAFF AREA
67.4M²
- ENTRANCE/CLOAKROOM
25M²
- W/C
36.3M²
- STORAGE
24M²
- SEATING
27.3M²
- STAGE
18.5M²
- BAR
78.5M²
- DANCEFLOOR
178.3M²



SCHEDULE OF ACCOMODATION

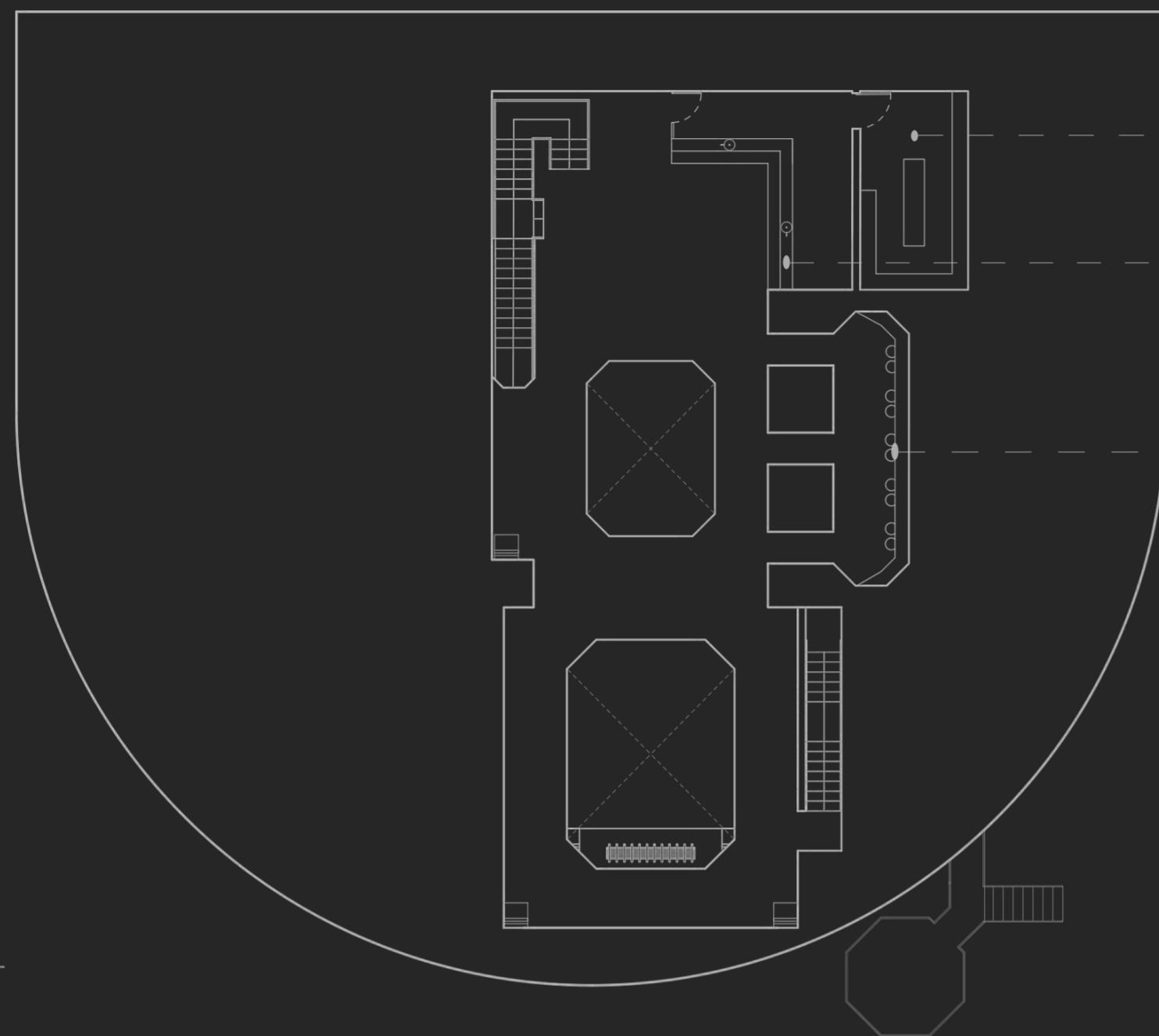


ROUGH MODEL TO VISUALISE SPLIT LEVEL (NOT TO SCALE)



BAR+MEZZANINE
BASEMENT 1
1:150

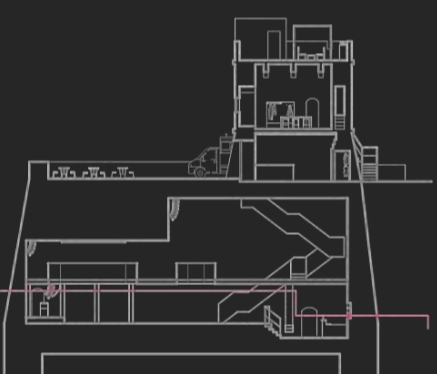
0 1 2 3 4 5m



STORAGE

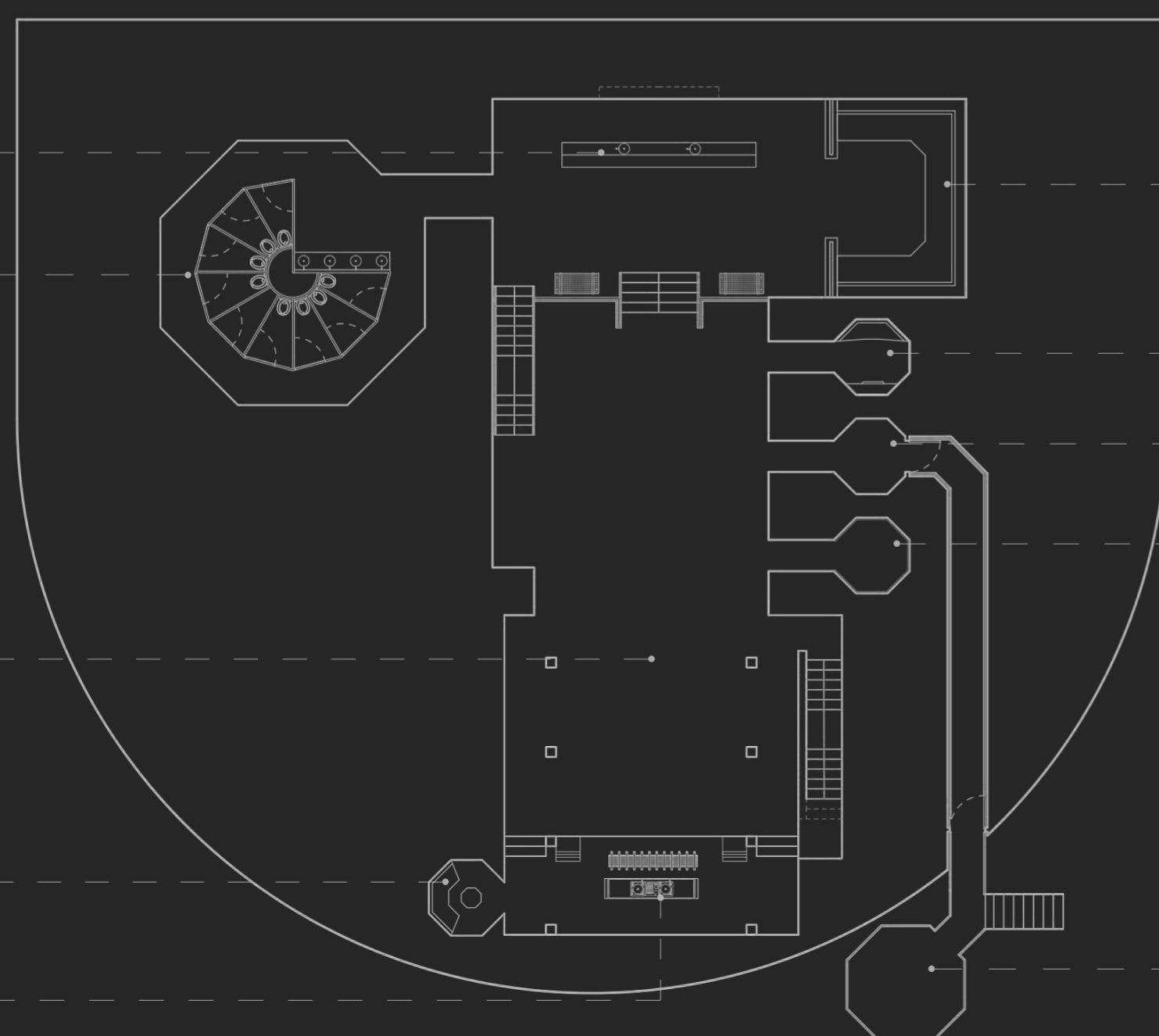
BAR

SEATING



BAR+DANCEFLOOR
BASEMENT 2
1:150

0 1 2 3 4 5m



SEATING

PHOTOBOOTH

EXIT TO BEACH LEVEL TERRACE

MIRROR ROOM

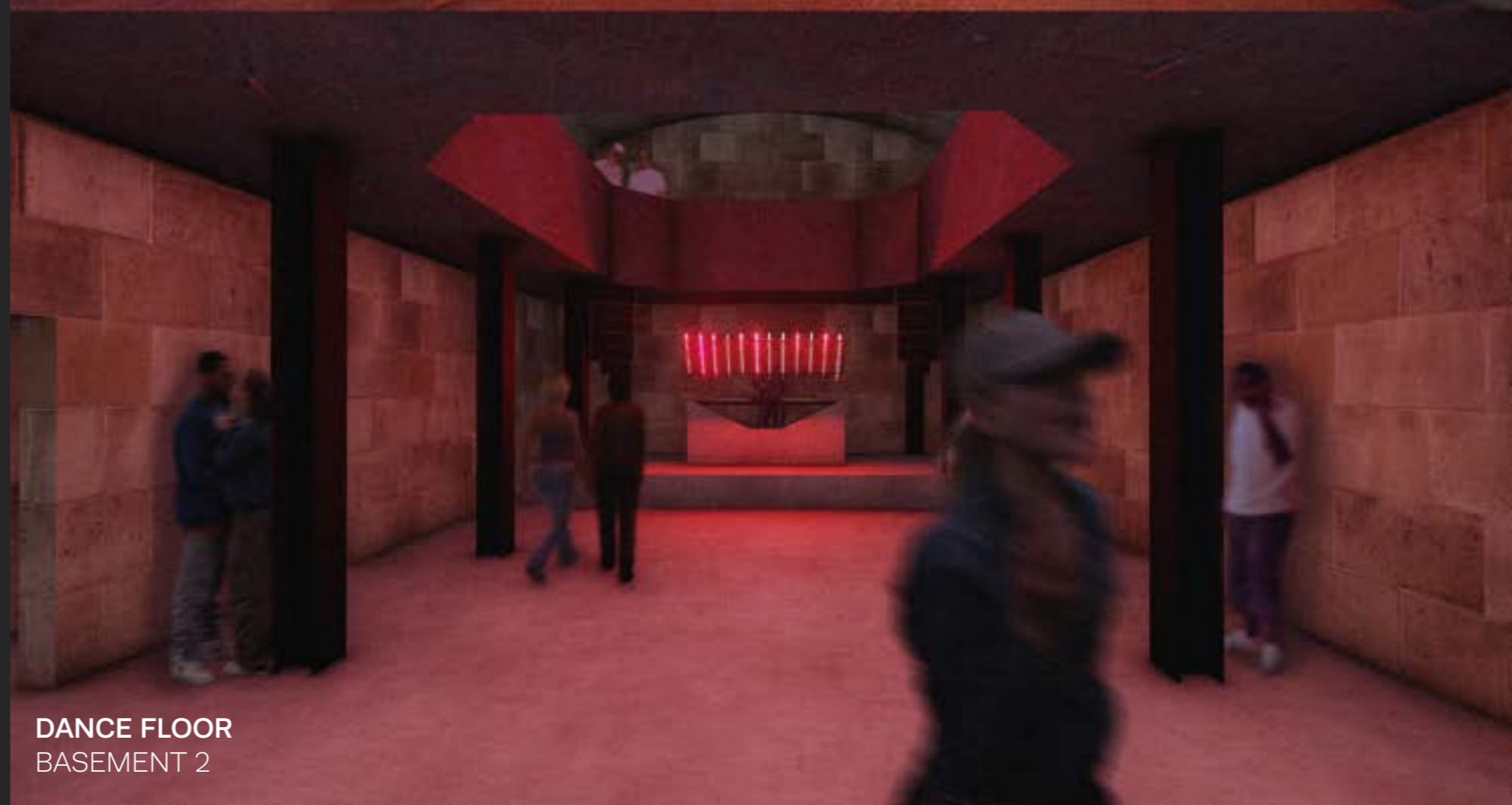
SMOKING AREA



BALCONY
BASEMENT 1



BAR
BASEMENT 1



DANCE FLOOR
BASEMENT 2

BAR

W/C

DANCEFLOOR

PRIVATE ROOM
FOR DJ

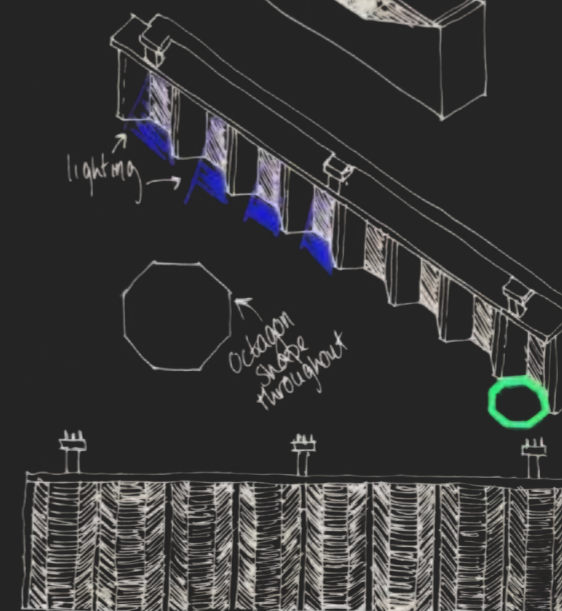
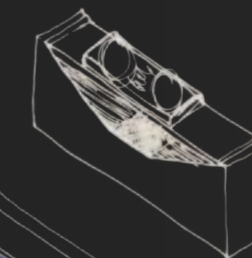
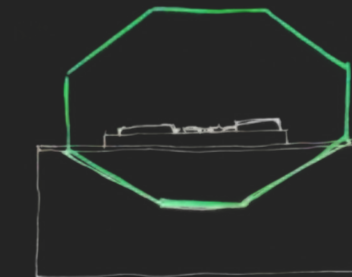
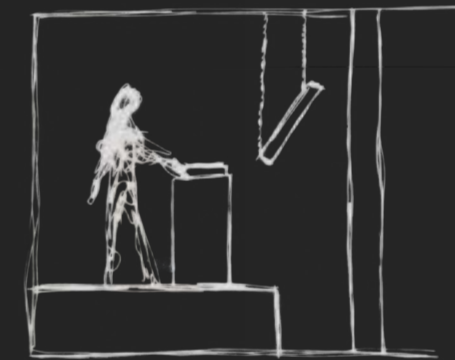
STAGE

MATERIALITY

- BLACK STEEL
- POLISHED CONCRETE
- COR-TEN STEEL
- MICROSUEDE
- LIMESTONE BRICKS



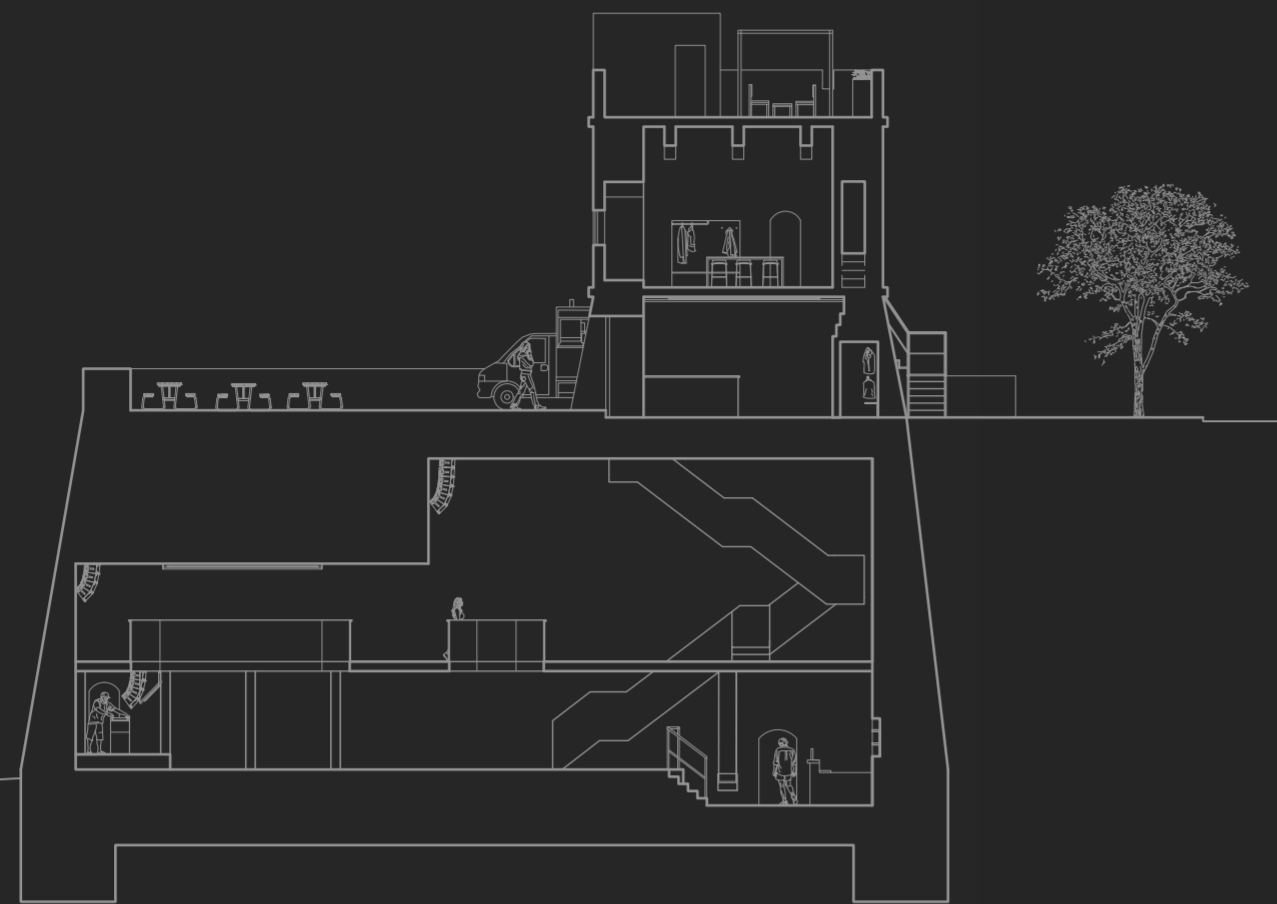
SKETCHES



· I DECIDED TO SPLIT THE SITE SO THAT THE TOP OF THE WATCH TOWER WAS DEDICATED TO STAFF AND THE GROUND FLOOR DOWN TO THE BASEMENT WAS FOR THE MUSIC VENUE. THIS IS SO THAT THE STAFF WERE NOT FORGOTTEN ABOUT AS THEY ARE AN IMPRTANT PART OF THE VENUE, ALSO THEY HAVE A PLEASANT SPACE TO HAVE THEIR BREAKS. I WANTED TO SPLIT THE BASEMENT INTO TWO LEVELS TO MAXIMIZE THE SIZE OF THE SITE. THIS ALSO ALLOWS THE VENUE TO BE MORE INTIMATE AND CAVE LIKE WITH THE LOWER CEILINGS AS TOWER 58 IS AN 'UNDERGROUND MUSIC' VENUE.

· I WANTED THERE TO BE A SCREEN INFRONT OF THE DJ SO THE AUDIENCE ARE RESTRICTED FROM SEEING THEM AS I FIND THAT A LOT OF THE TIME PEOPLE ARE SO INFATUATED WITH THE NAME OF SOMEONE AND DONT REALLY APPRECIATE THE MUSIC THEY ARE PLAYING. THIS MUSIC VENUE IS ABOUT FINDING A PLACE TO ESCAPE AND ENJOY YOURSELF RATHER THAN SHOW OFF ABOUT WHERE YOU ARE AND WHAT MUSIC ARTIST IS PERFORMING.

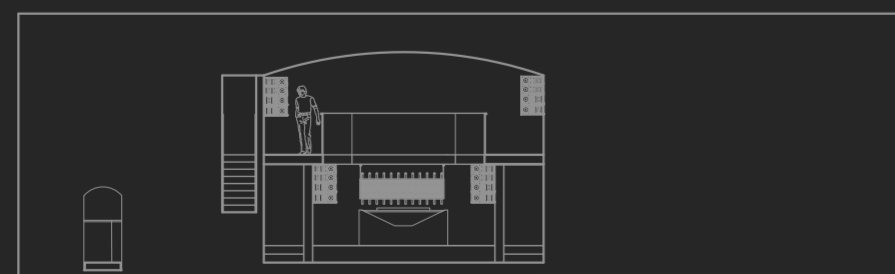
· I CARRIED OUT AN OCTAGONAL SHAPE THROUGHOUT THE WHOLE DESIGN INCLUDING WHEN DESIGNING THE DJ BOOTH AND THE BARS. THIS CAME FROM INVESTIGATING THE GEOMETRIES FOUND IN HISTORICAL FORTS AND DEFENCE TOWERS THROUGHOUT HISTORY.



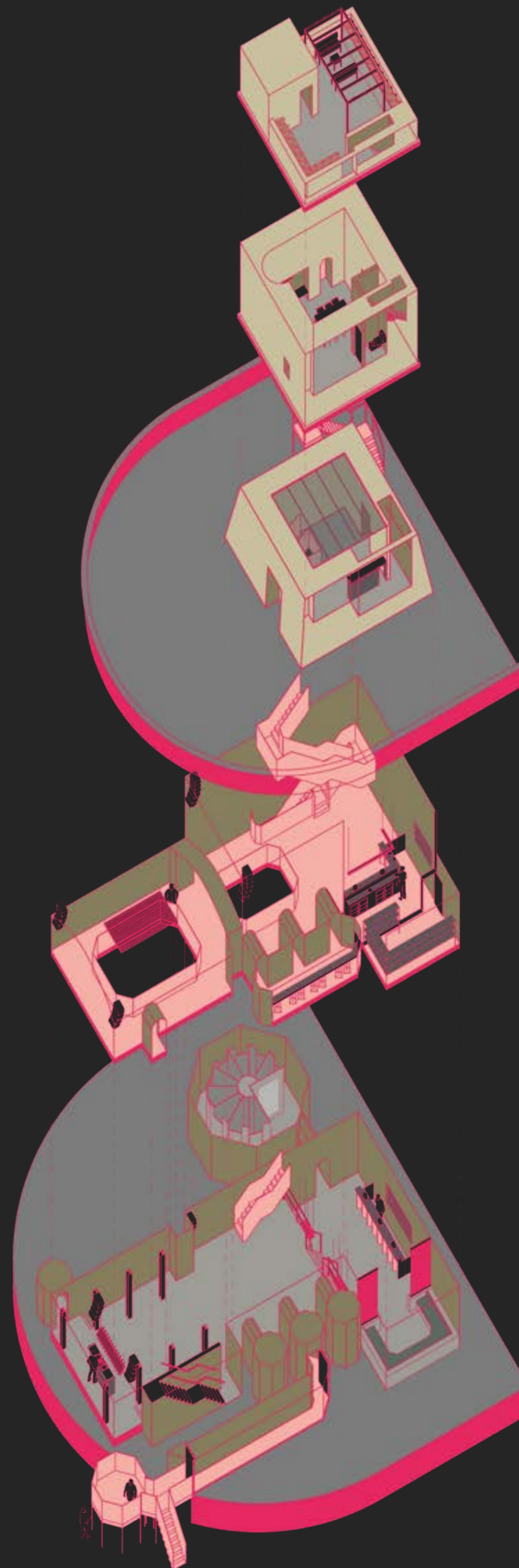
1:150
0 1 2 3 4 5m



1:150
0 1 2 3 4 5m



1:150
0 1 2 3 4 5m



1:250

