

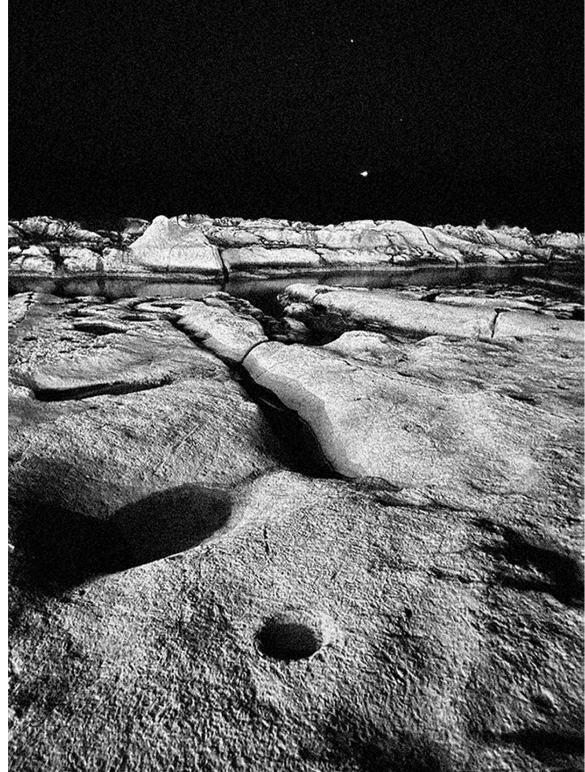
SLIEMA MEMBERS CLUB

AN EXPLORATION OF THE PHILOSOPHY BEHIND HEDONISM & ITS LINK TO MODERN DAY SOCIETY - IN BOTH A MATERIALISTIC AND IDEALISTIC SENSE - WHICH WILL BE TRANSFERRED INTO MY DESIGN FOR A MENTAL WELLNESS BASED MEMBERS CLUB LOCATED IN A REPURPOSED LOOK OUT TOWER ON THE MALTESE COAST.

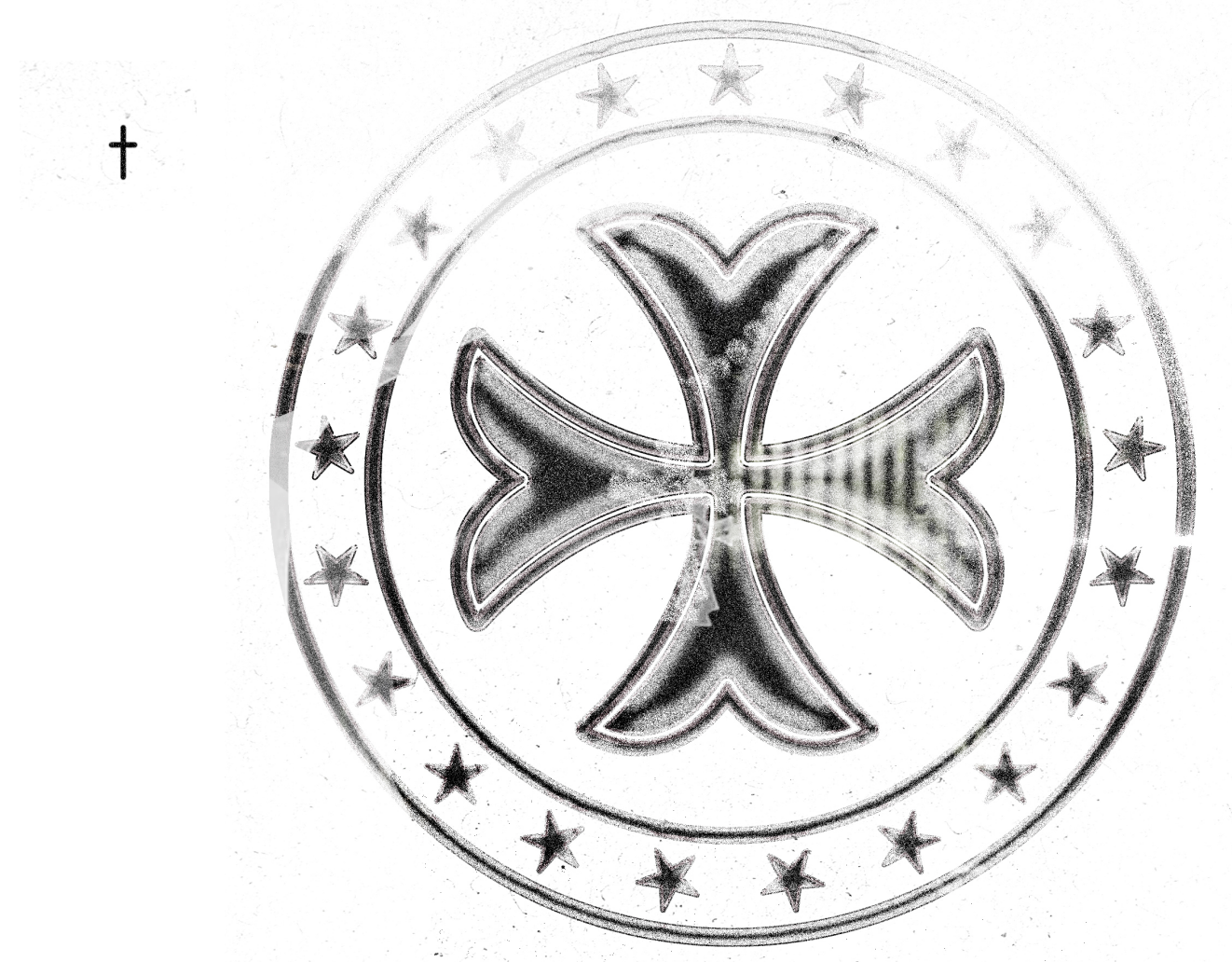


FULL PROJECT

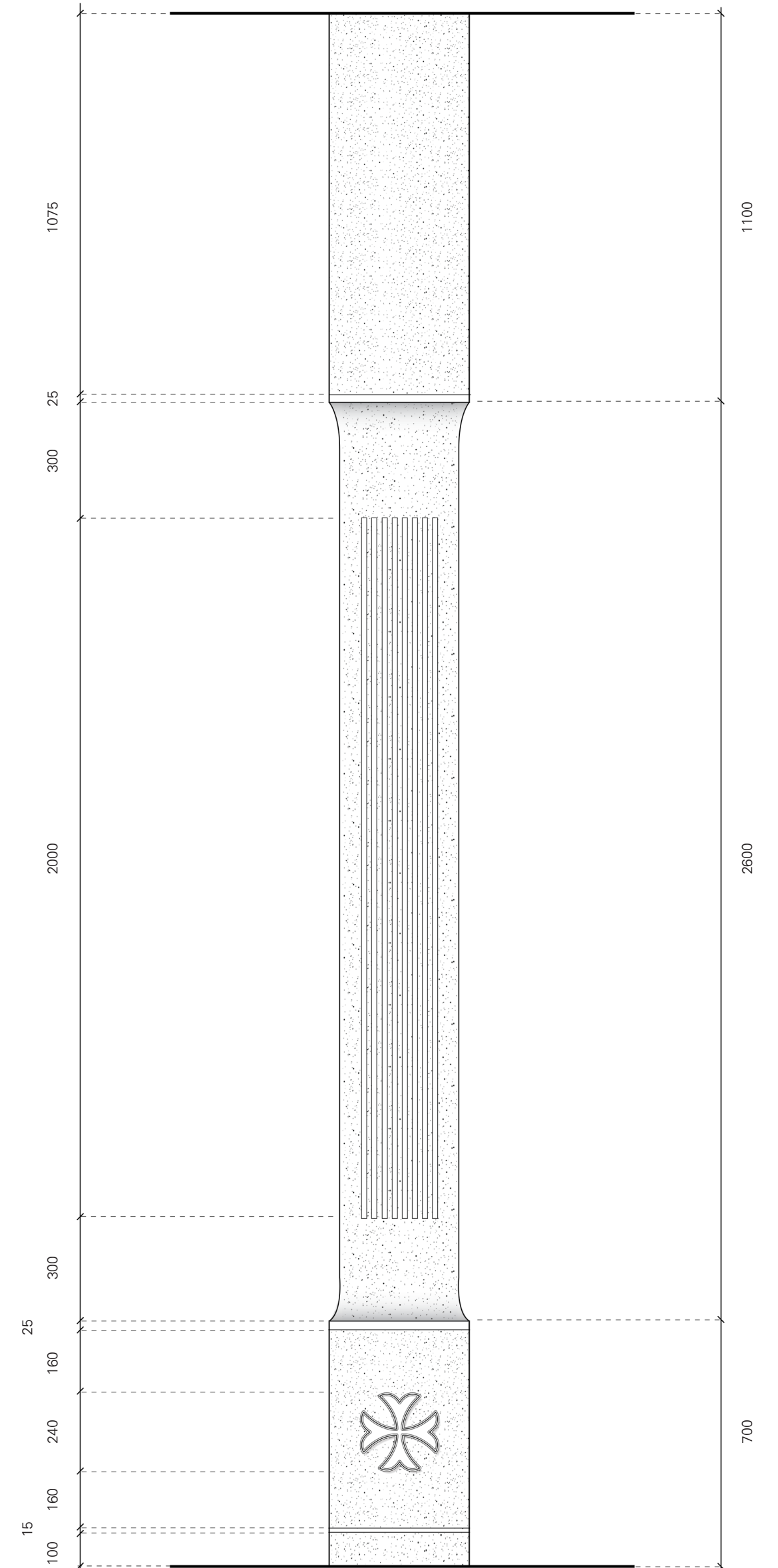
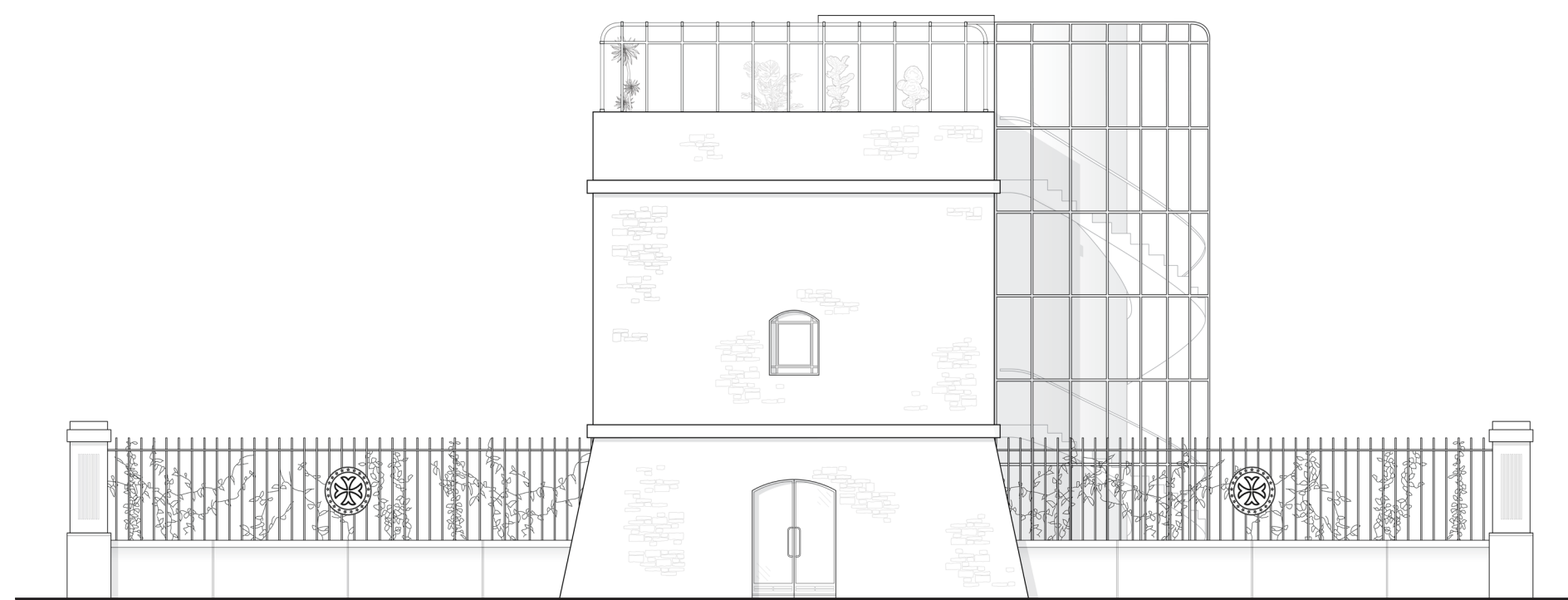




EXISTING SITE PHOTOS

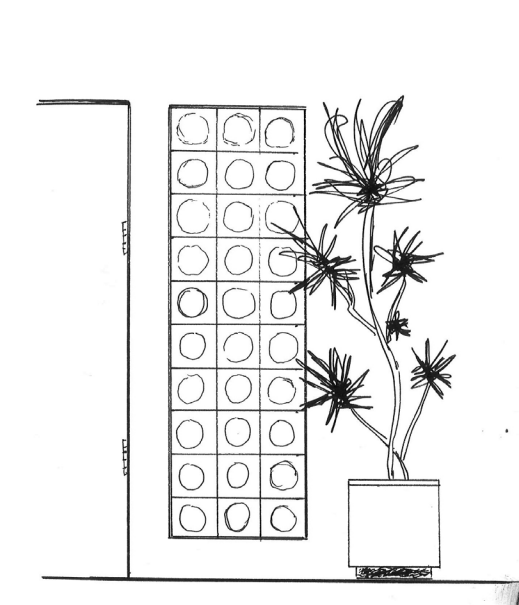
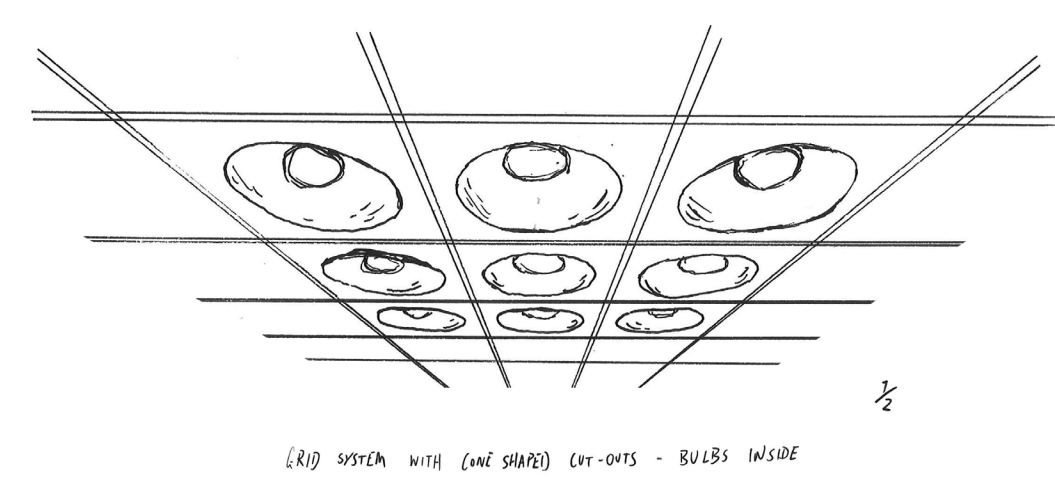
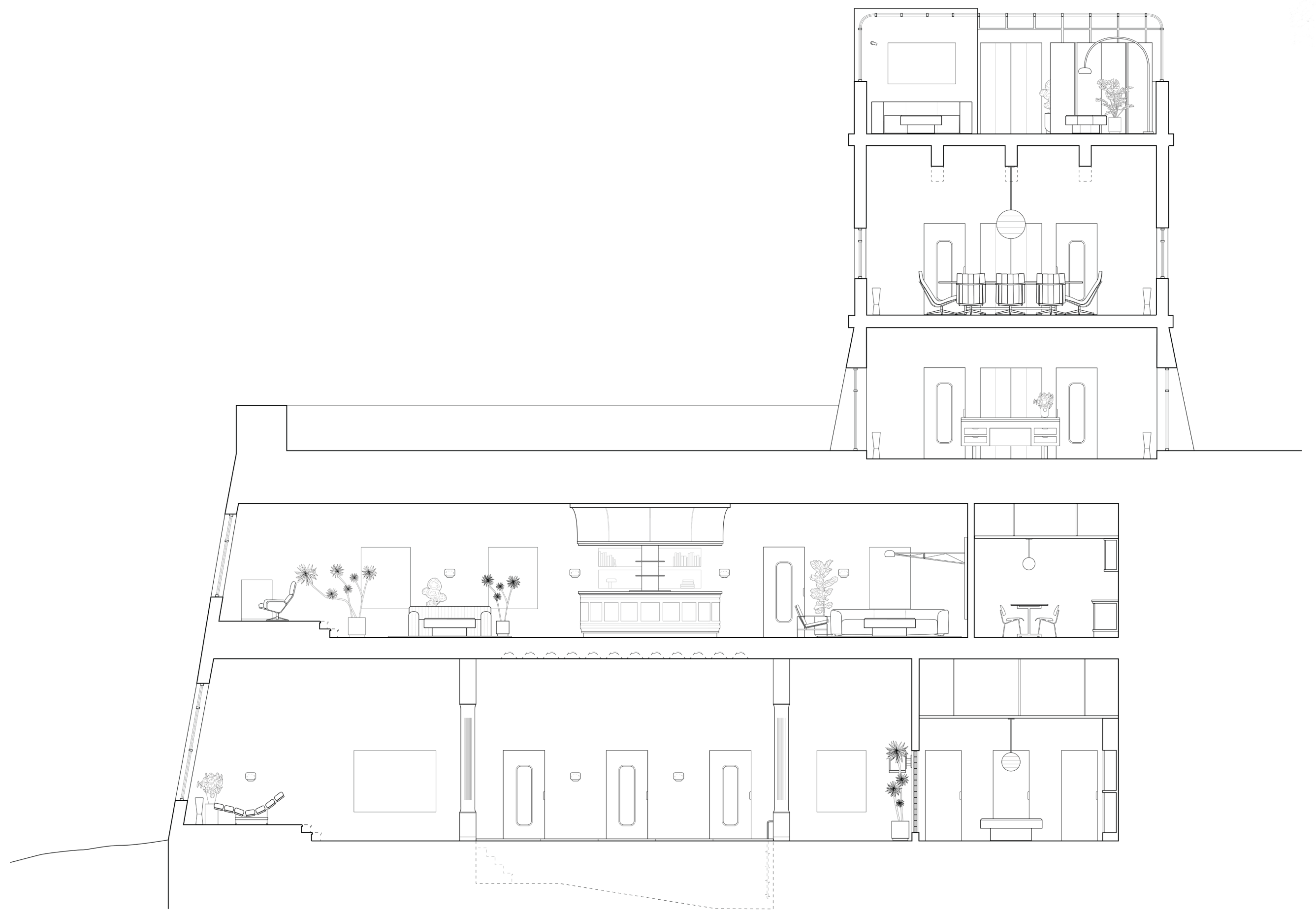
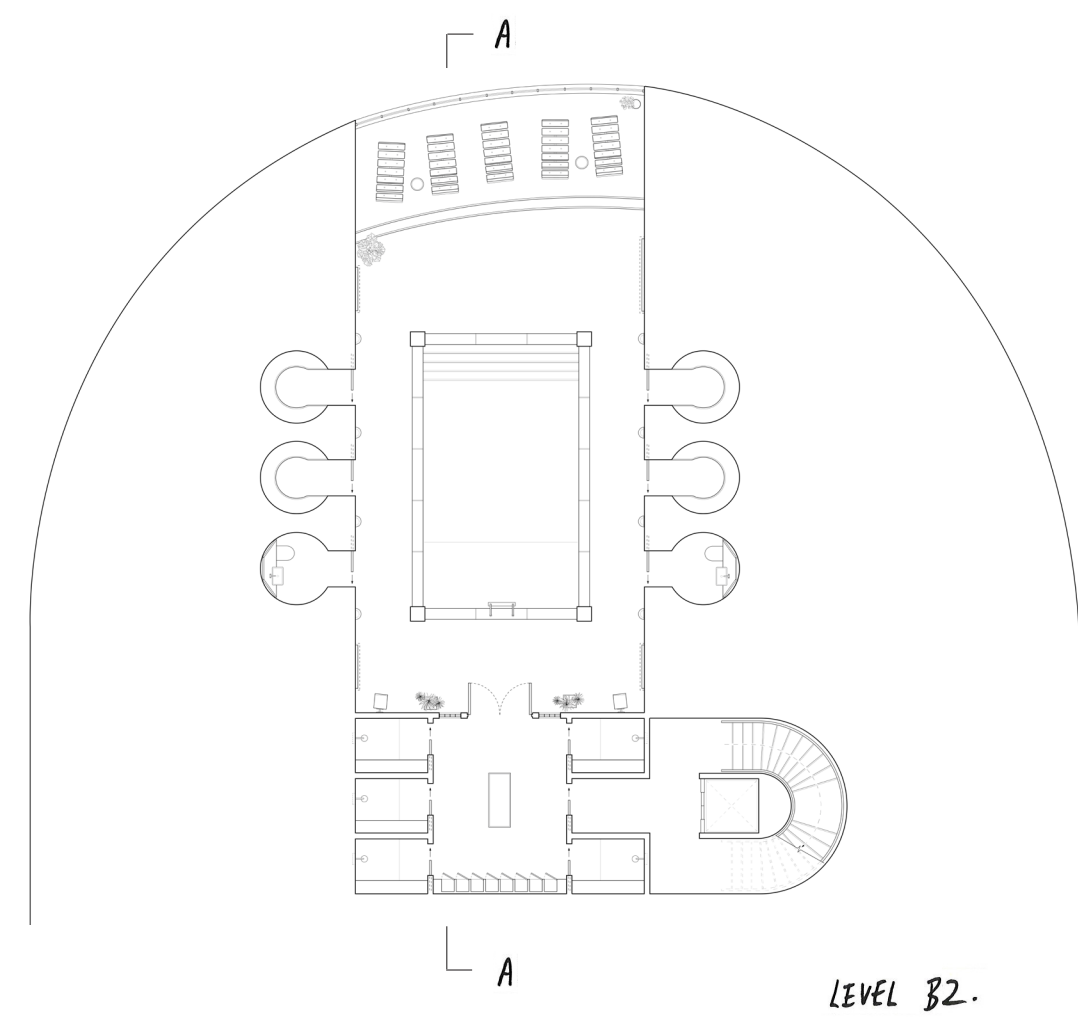
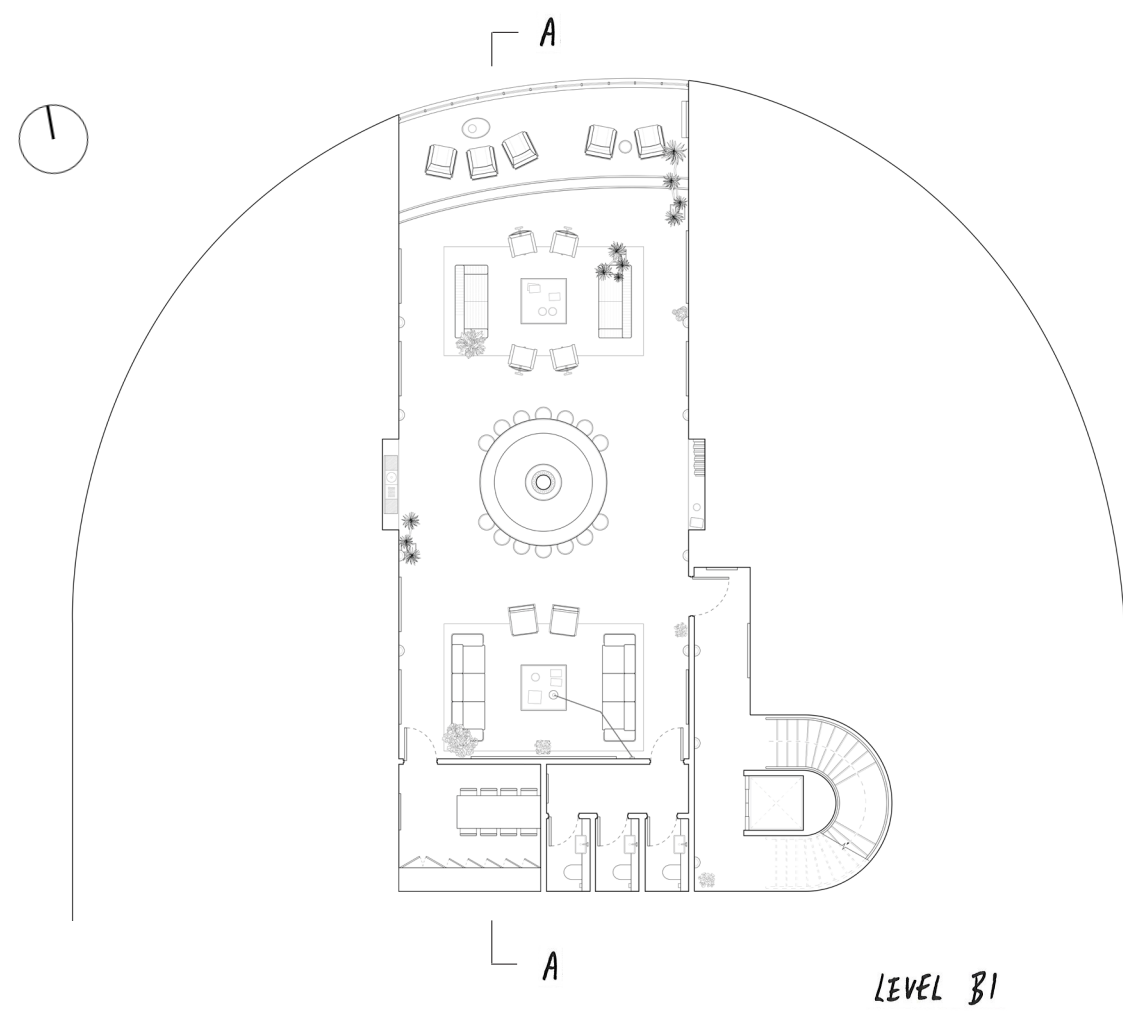


THE FOCAL POINT OF THE DESIGN IS A **REWORK OF THE ICONIC EIGHT-POINT MALTESE CROSS**, TAKING INSPIRATION FROM THE FORMS AND SHAPES SEEN THROUGHOUT MALTESE LACE - INTENDED TO CONTRAST PERFECTLY AGAINST THE **BRUTALIST MATERIALS** THAT THE EMBLEM WILL BE CASTED INTO (SUCH AS THE CONCRETE PILLAR DETAILED ON THE RIGHT AND THE METAL FENCING ON THE FRONT ELEVATION BELOW). FURTHERMORE, THE CENTRE PIECE IS ALSO **INFLUENCED BY THE GOTHIC CROSS** - LINKING INTO MALTA'S RICH RELIGIOUS BACKGROUND. TO TIE THE DESIGN TOGETHER, THE OUTER-RING OF STARS REPRESENT THE TWENTY-ONE ISLANDS THAT MAKE UP THE MALTESE ARCHIPELAGO.



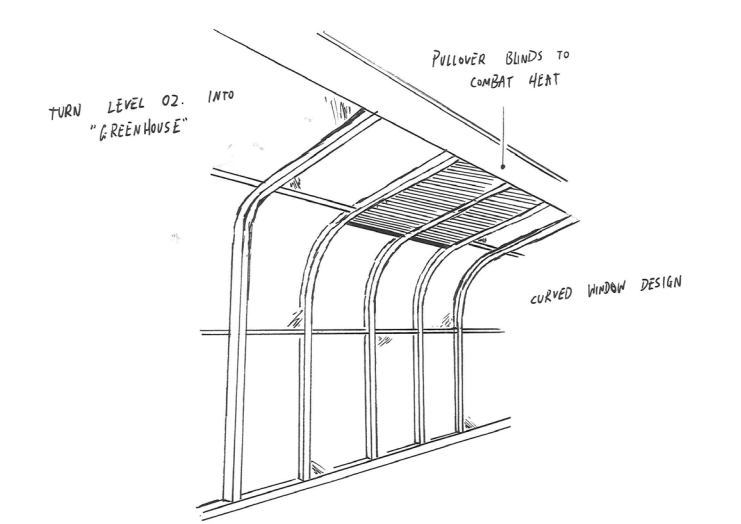
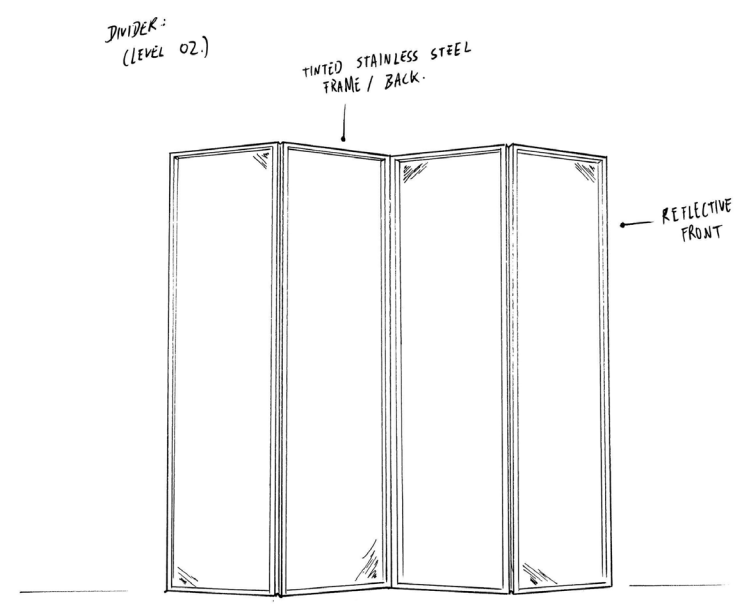
CONCRETE ORNAMENTAL PILLAR

SMC



USE OF 'ALPHA' GLASS BLOCKS
 CREATES CONSISTENCY BETWEEN
 SHAPES / FORMS THROUGHOUT
 THE SPACE

1/2





SLIEMA MEMBERS CLUB AIMS TO ACT AS A SANCTUARY FOR IT'S MEMBERS

WHILST A HEDONISTIC LIFESTYLE IS OFTEN ASSOCIATED WITH LUXURY AND FRIVOLITY, AT ITS ESSENCE, IT CAN BE ARGUED THAT THE TRUE SOURCE OF HAPPINESS COMES FROM A PEACEFUL AND SERENE EXISTENCE.

