

**The Square**

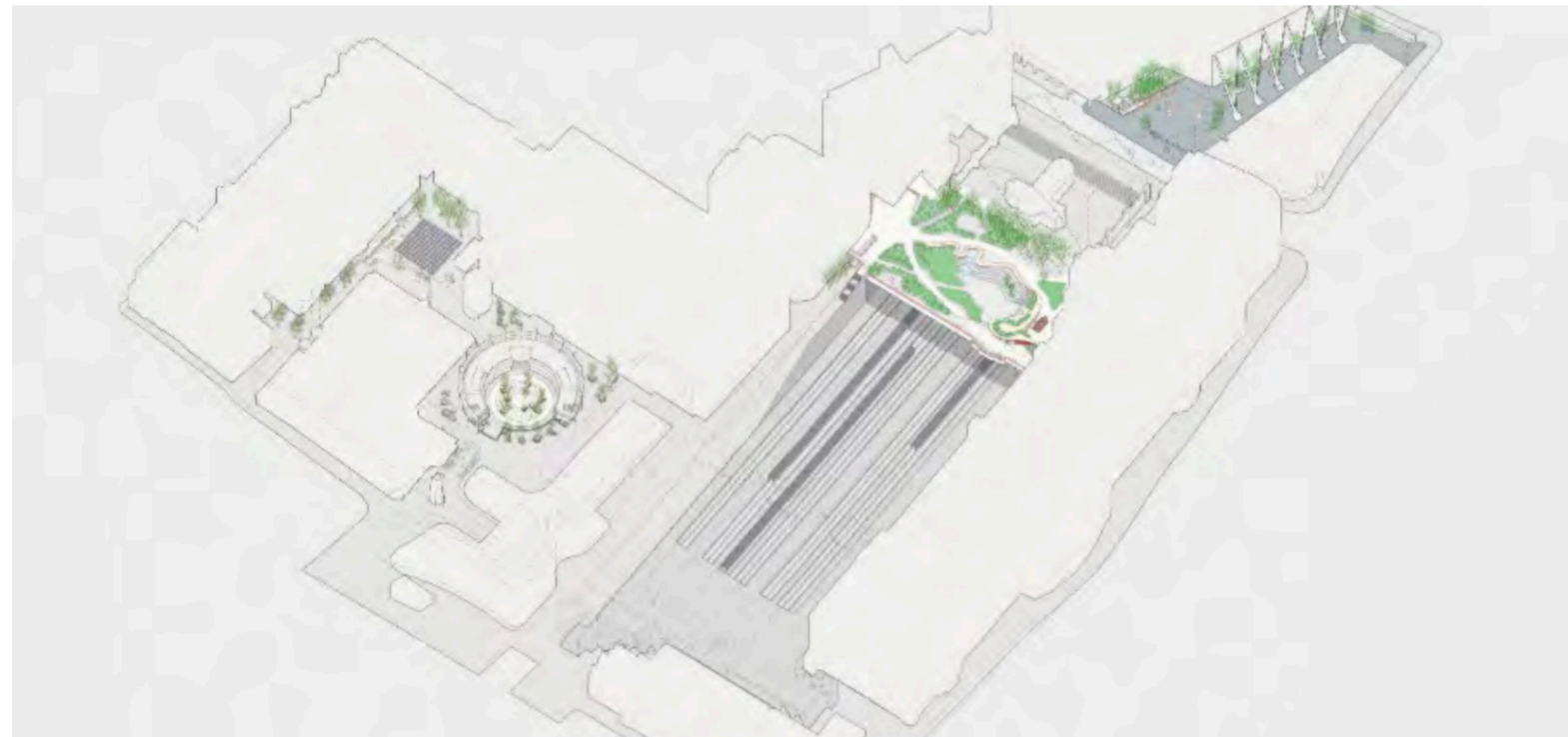
**Client: Broadgate**

**Project Architects:** Sir Robert McAlpine

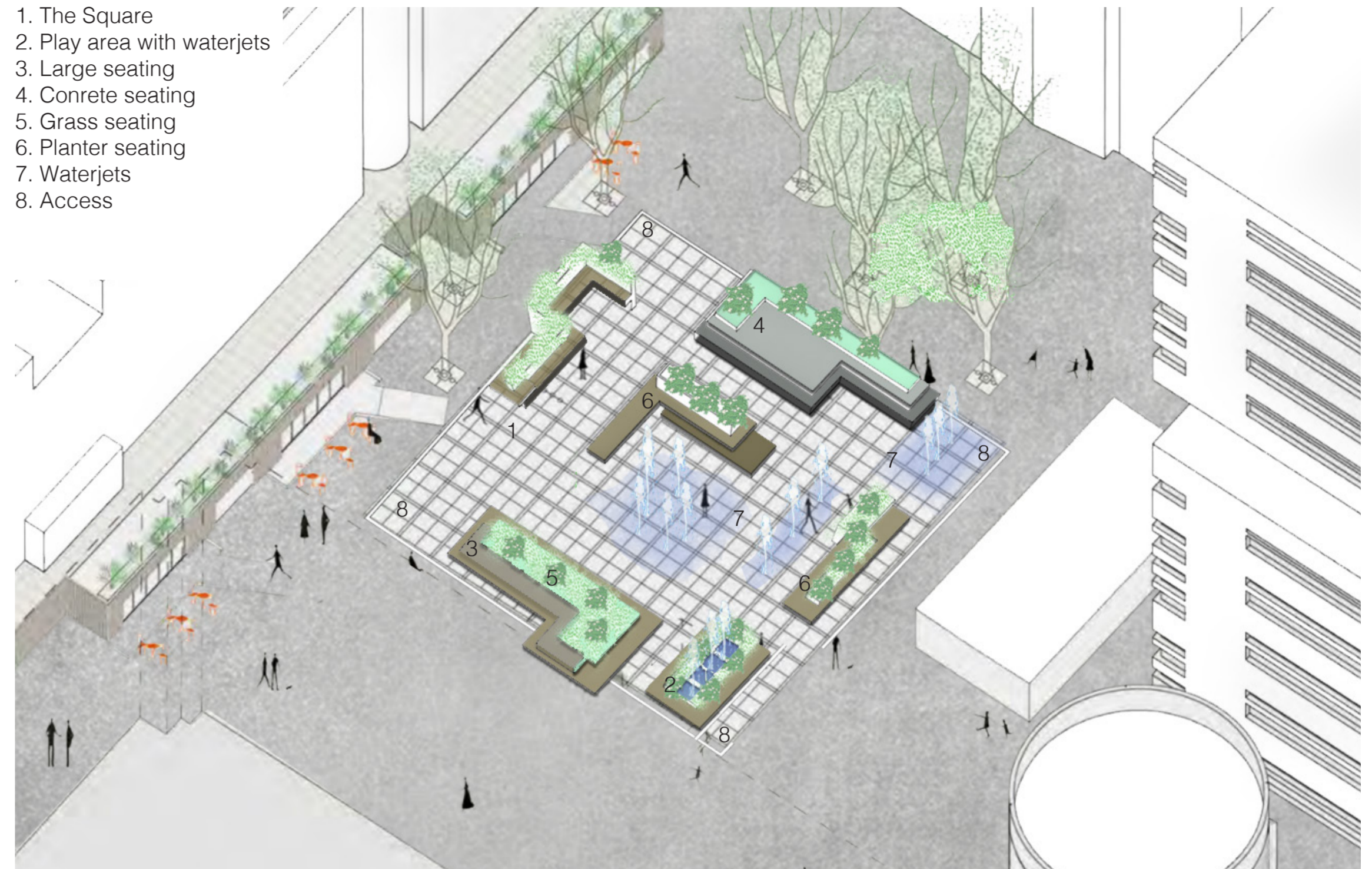
The design team students from university Prince Garcia (Interior Design), Miurjina Aktur MIAH (Interior Design), Blazej GORALCZY (Architecture), Erda GEGA (Architecture)

**Brief:** British Land and Sir Robert McAlpine are continuing their development of the Broadgate Framework. This involves the demolition and subsequent re-development of 2-3 Finsbury Avenue by 3XN to the North of Finsbury Avenue Square, and 1-2 Broadgate by AHMM to the South of Finsbury Avenue Square. The Broadgate prize invites teams to consider two design challenges: firstly, a larger scale strategic redesign of the square in the context of the new Broadgate campus, in relation to the surrounding newly developed schemes, and the new and existing pedestrian routes through and to the square. Secondly, a detailed development of a specific object in the square.

Existing site plan

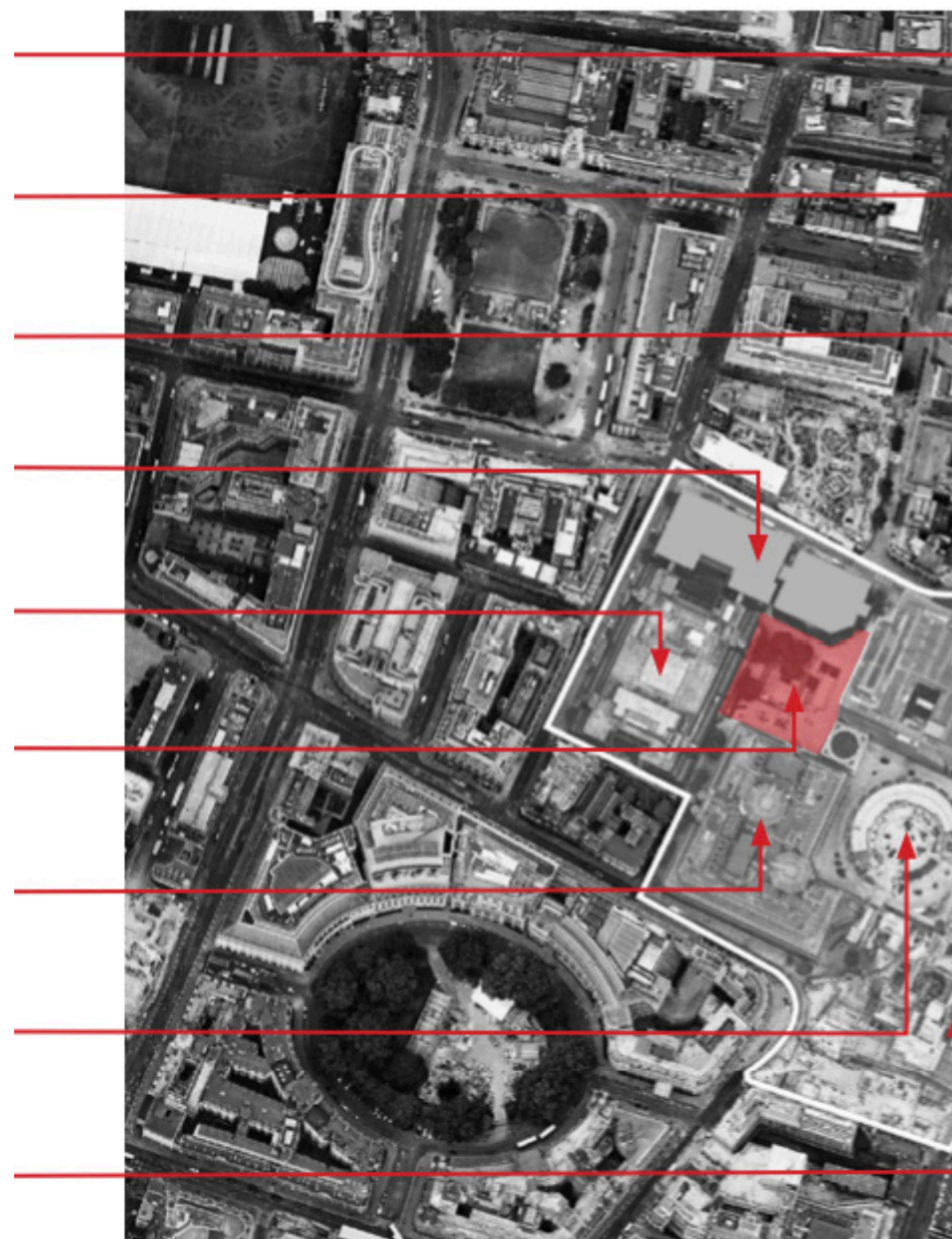


1. The Square
2. Play area with waterjets
3. Large seating
4. Concrete seating
5. Grass seating
6. Planter seating
7. Waterjets
8. Access

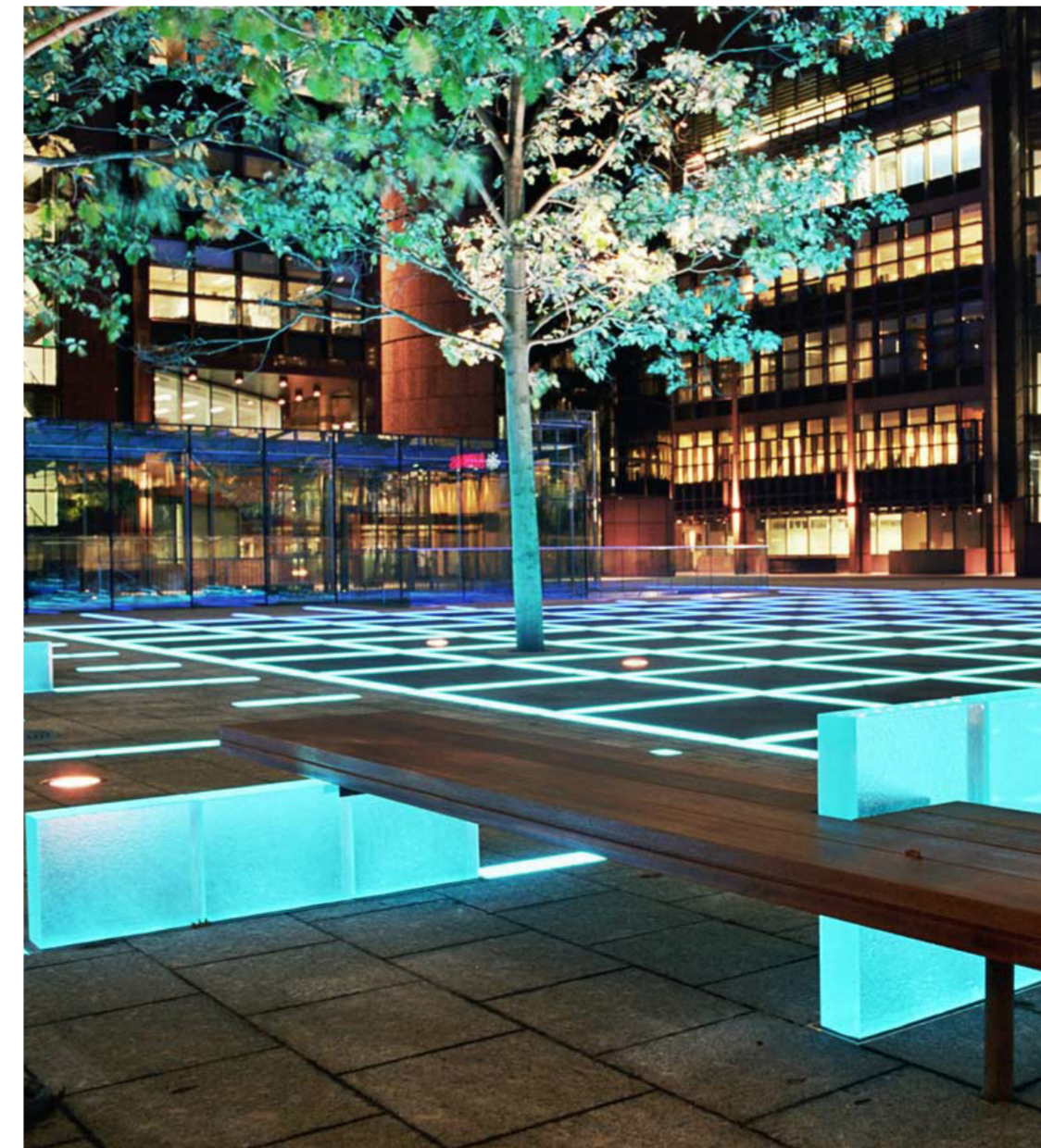


Axonometric

- Exchange Square (DSDHA)
- Liverpool St Station
- 5 Broadgate (MAKE)
- 2-3 Finsbury Avenue (3XN)
- 1 Finsbury Avenue (ARUP)
- Finsbury Avenue Square
- 1-2 Broadgate (AHMM)
- Broadgate Circle
- 100 Liverpool Street (Hopkins)



Site analysis

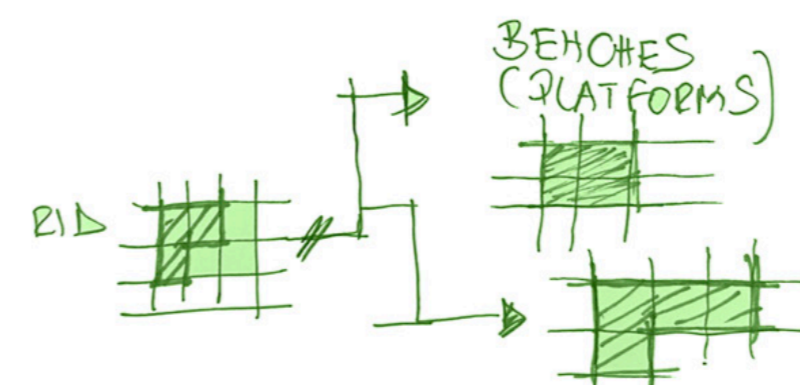
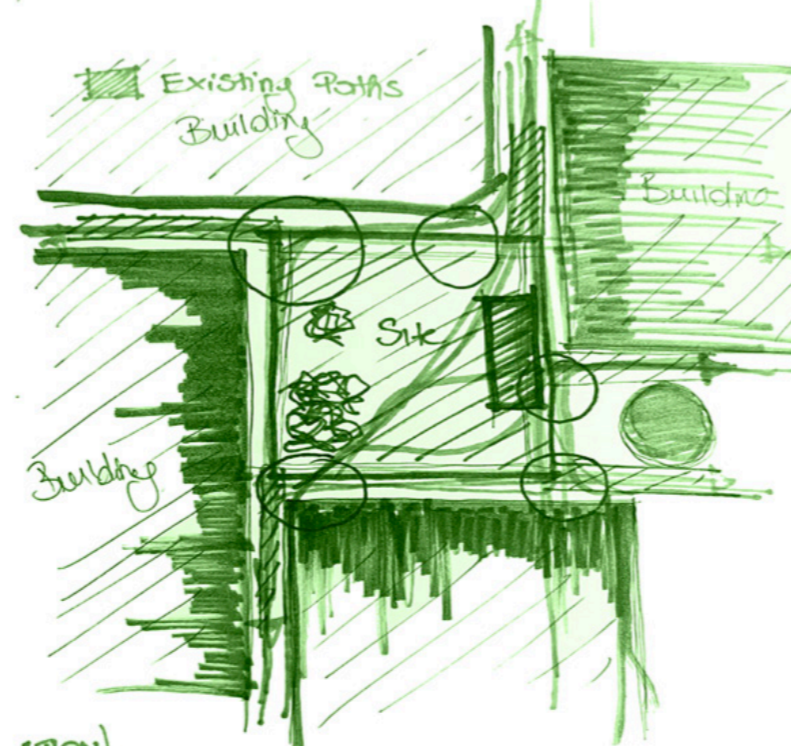
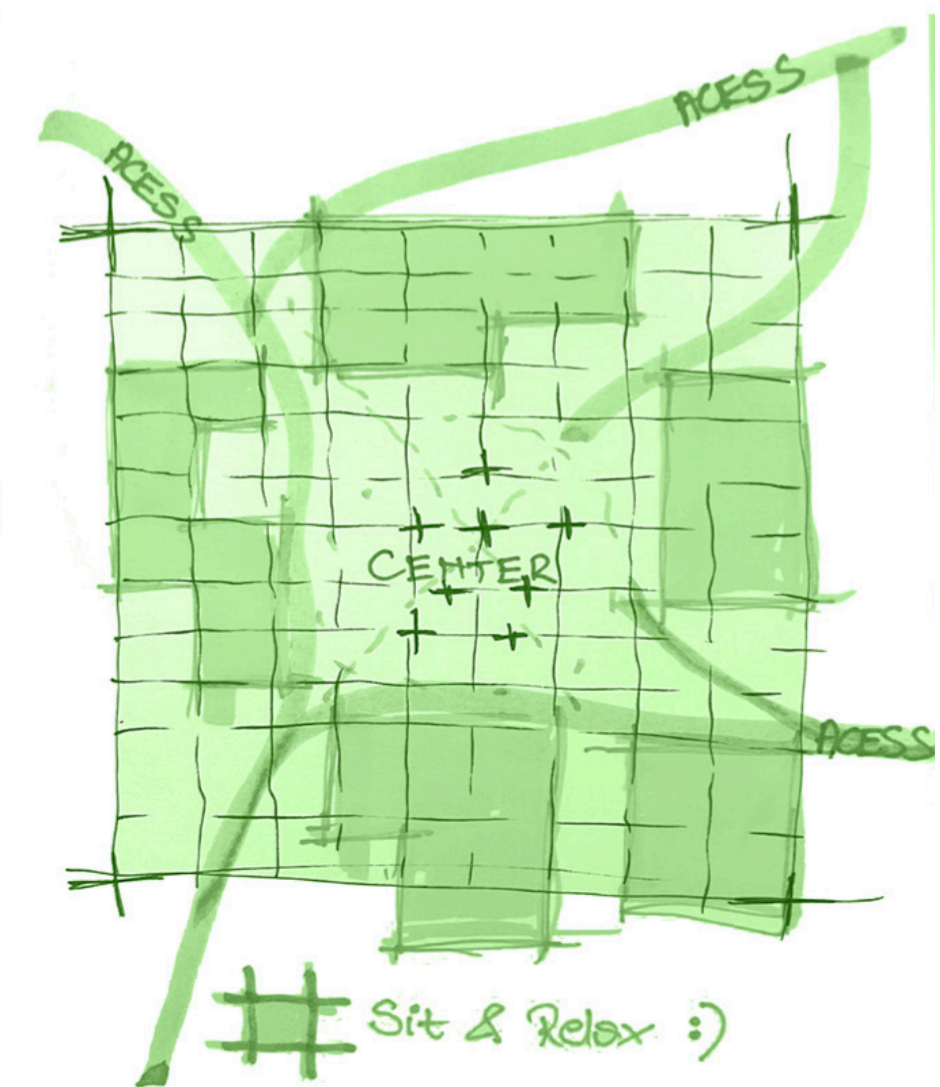
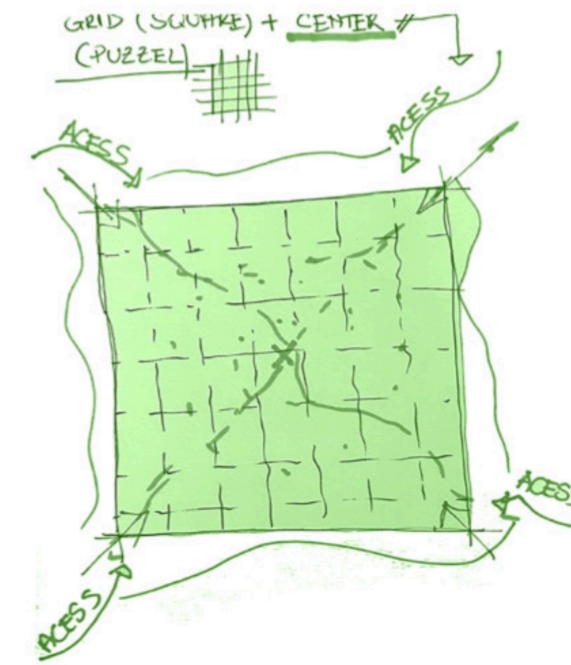
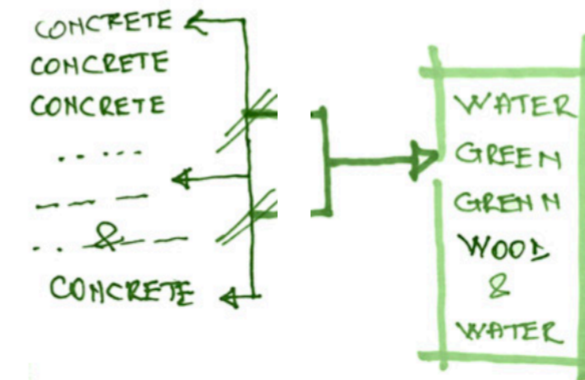
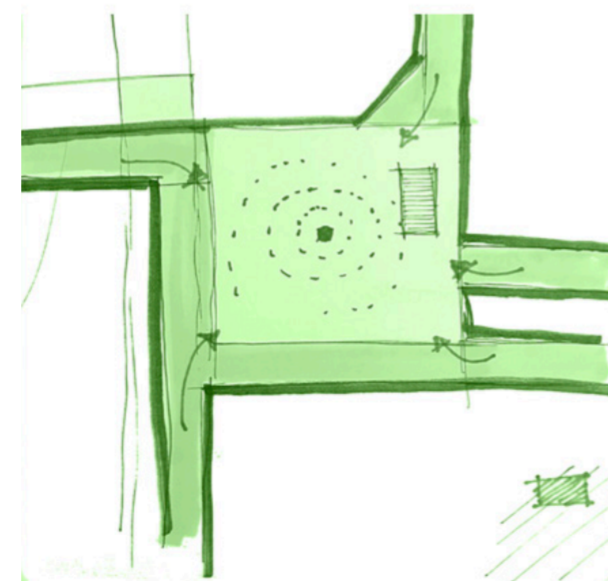
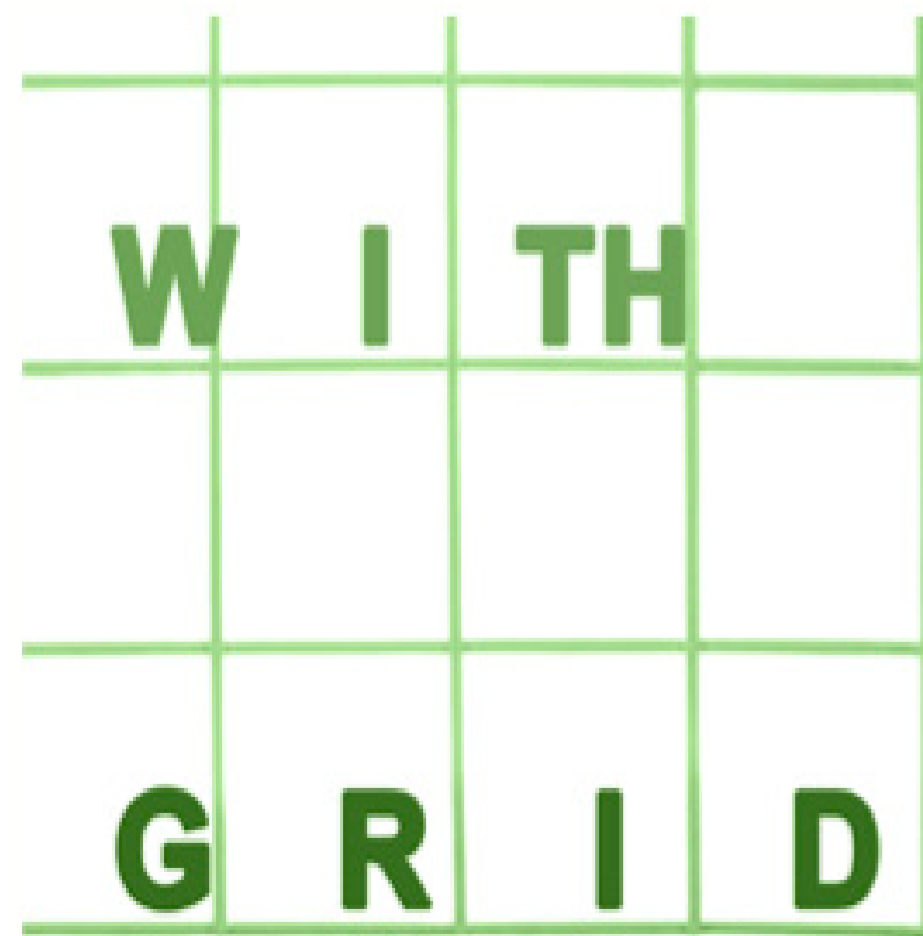
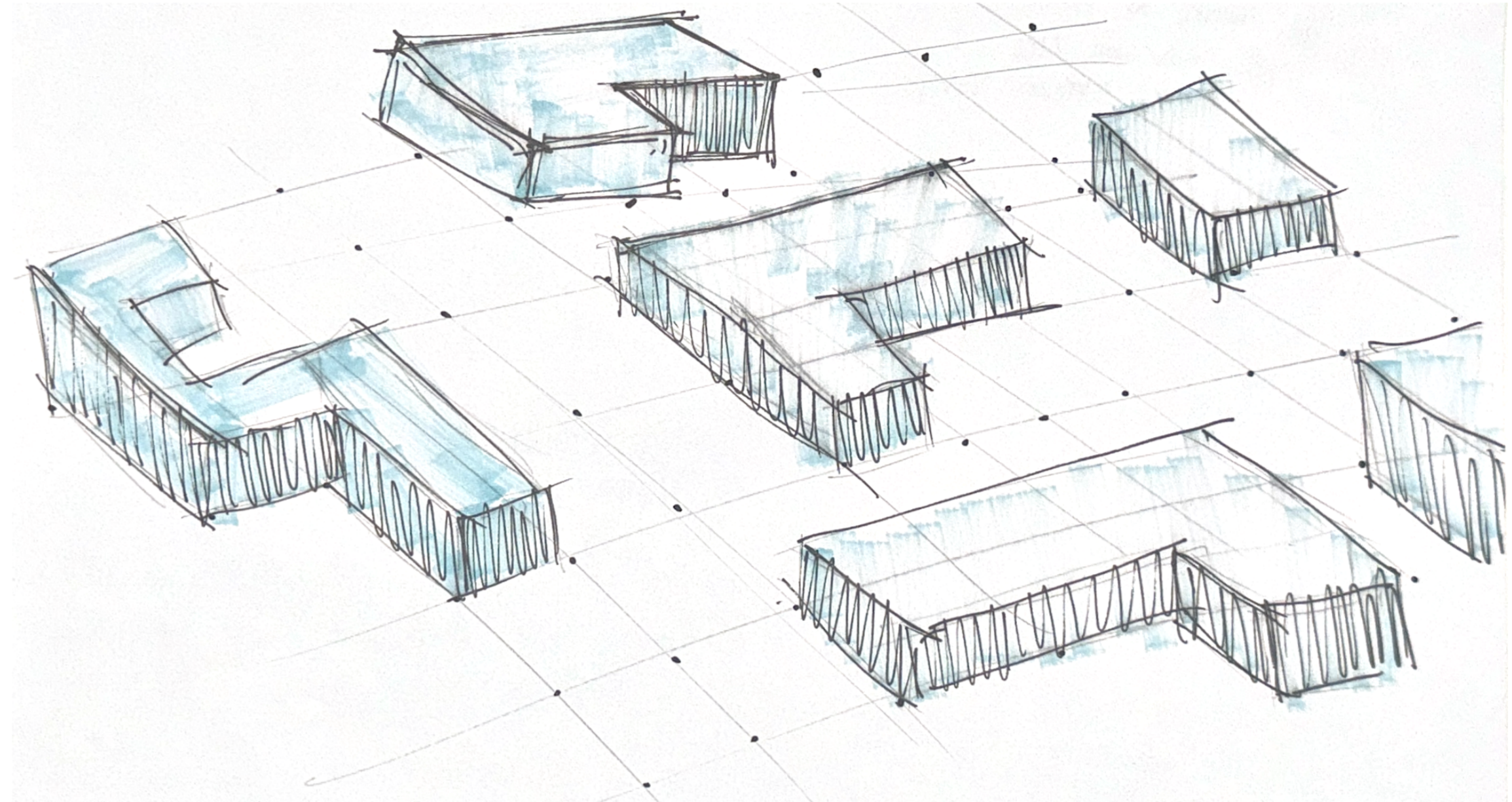
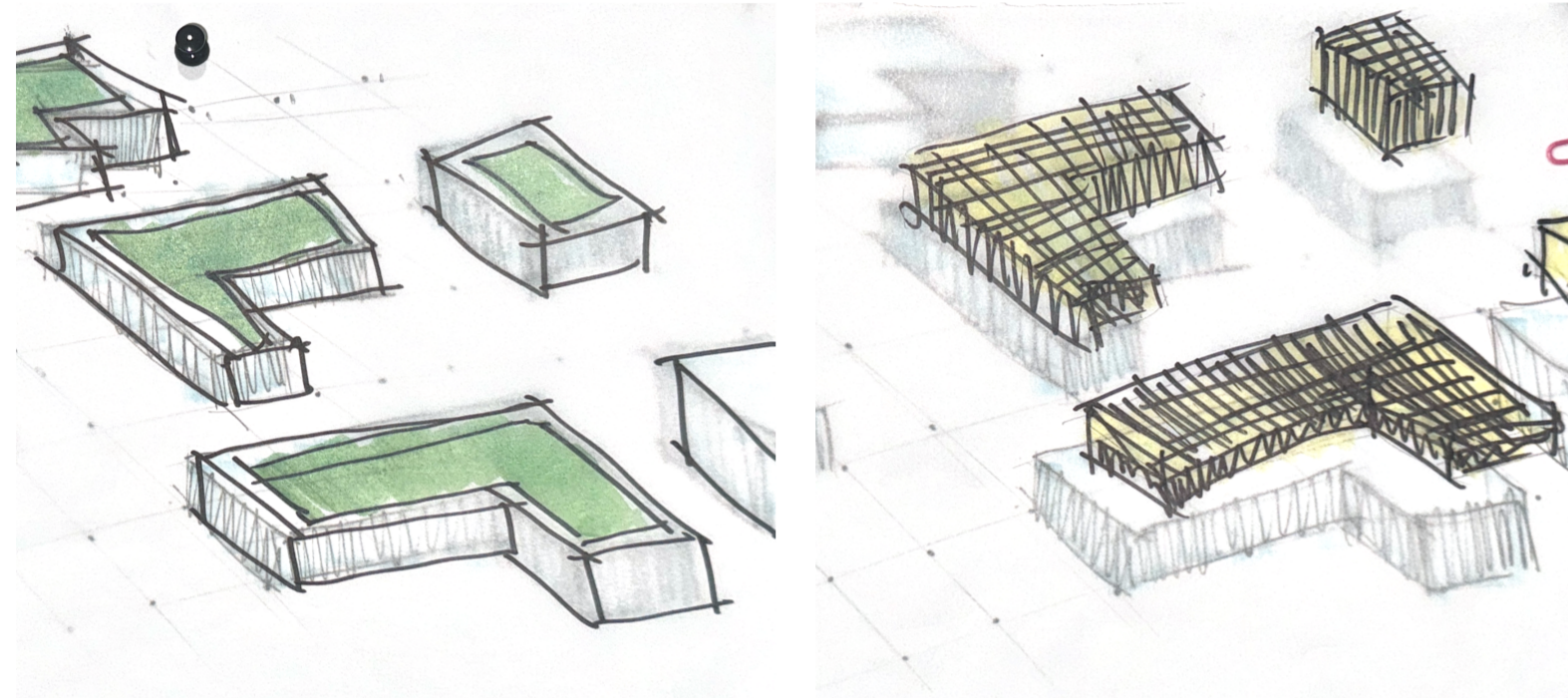


Site photos



## Design Development - Sketches

Our objective is to establish a vibrant gathering space that serves as a focal point for social interaction and recreation among workers and visitors to the area. In addition to providing benches for seating, we have incorporated water jets into the design. This interactive element engages visitors, especially children, encouraging playful interaction with the water feature. The sight and sound of flowing water from fountain jets have a calming effect on people, creating a relaxing atmosphere that allows individuals to unwind and enjoy the surroundings. Inspired by the wooden benches at Finsbury Avenue Square, our concept emphasizes the timeless beauty of natural materials and functional design. We'll use sustainably sourced wood to create durable, weather-resistant seating that blends seamlessly with outdoor environments. Clean lines and ergonomic comfort will ensure versatility, while incorporating greenery and a modular approach will prioritize inclusivity and adaptability. Our goal is to craft benches that enhance experiences and promote environmental sustainability through thoughtful design and craftsmanship.



AREAS THAT SHOULD BE FREE



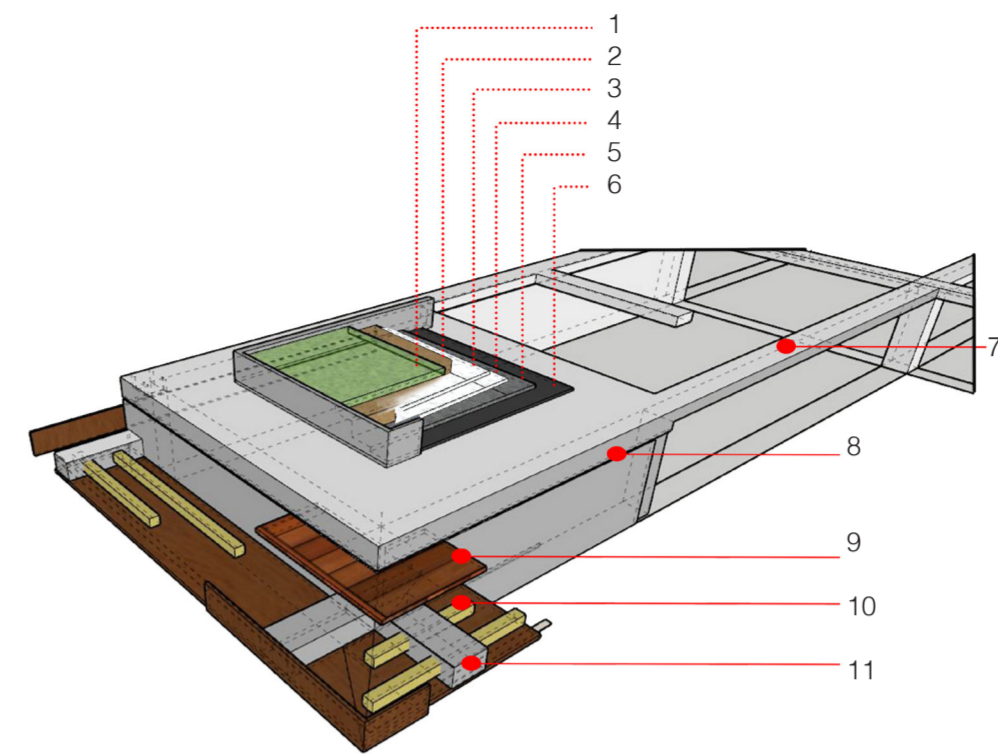




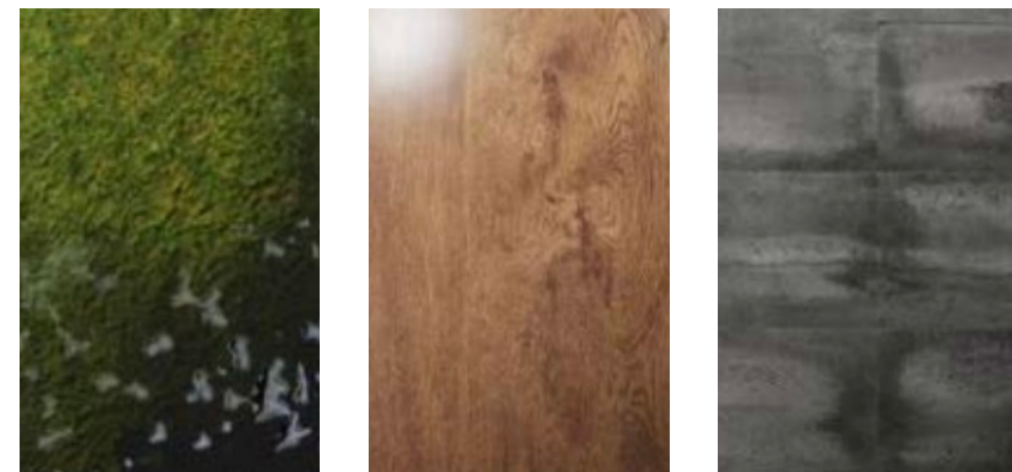


Plan

**Plan, Section, Elevation and Materials**

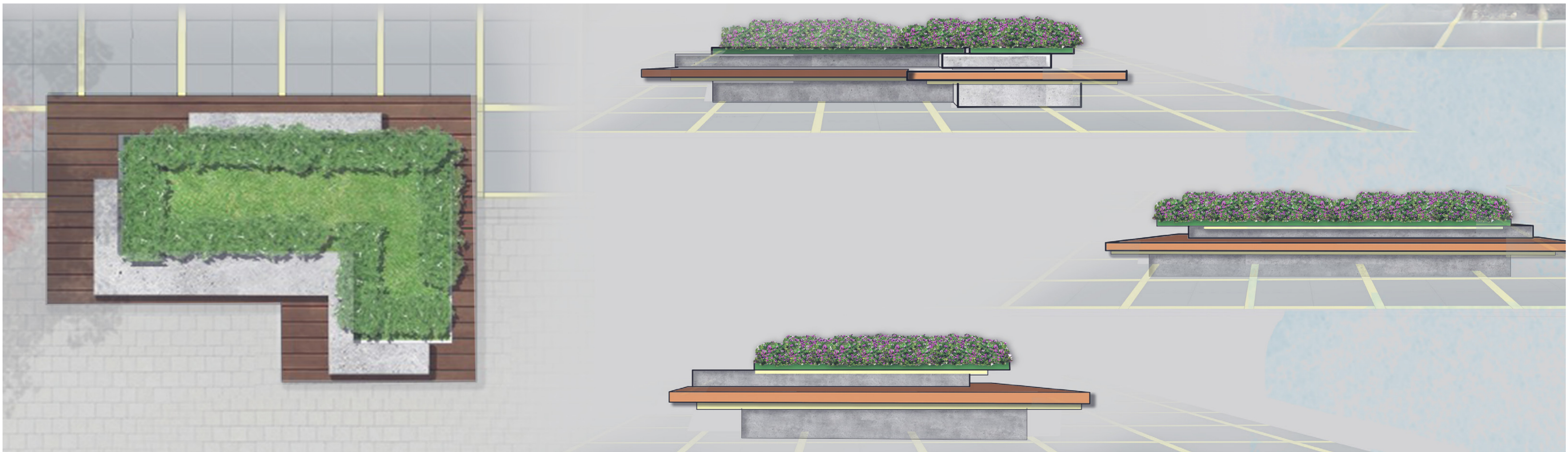


- 1. Grass and bushes
- 2. Growing medium
- 3. Drainage Layer/water reservoir
- 4. Isulation
- 5. Root barrier
- 6. Membrane protection
- 7. Concrete structure
- 8. Hidden LED lights
- 9. Wood
- 10. Wood joist
- 11. Concrete beams



European Oak (*Quercus robur*) is a durable hardwood from the UK, favored for outdoor projects due to its strength, decay resistance, and attractive grain. It is often left untreated to weather naturally. Using fully recycled concrete in construction reduces waste, conserves resources, lowers carbon emissions, and supports the circular economy by repurposing crushed concrete from demolished structures. Incorporating European Oak in sustainable construction highlights durability and environmental responsibility, reducing the need for maintenance and chemical treatments.

Materials



Elevation



