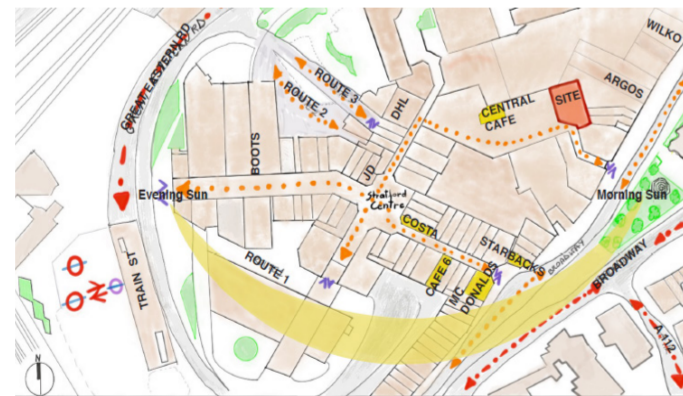
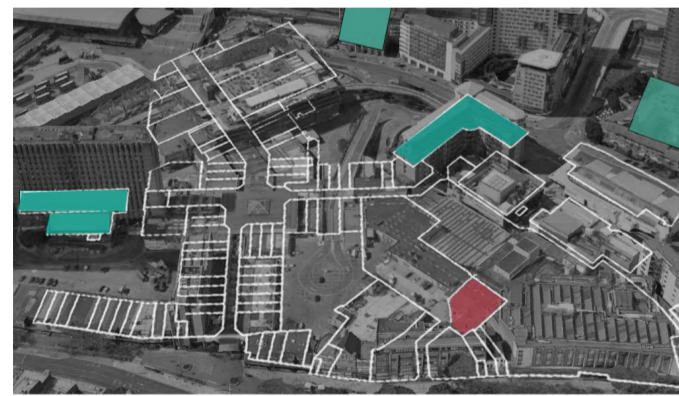


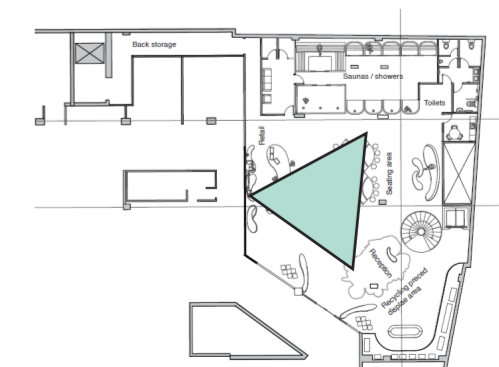
COFFEE +

Coffee plus, overall well-being, for both us and the environment a sustainable coffee shop and lamp. I had to design a coffee shop in Stratford Town centre, combining the cafe with one or more functions as long as it increases clients experience in the shop and exceed the shops cash flow. Coffee/ Addiction offers all services that are beneficial to our wellbeing in one place, coffee, healthier drinks and food choices as well as saunas, therapy rooms and beauty services.

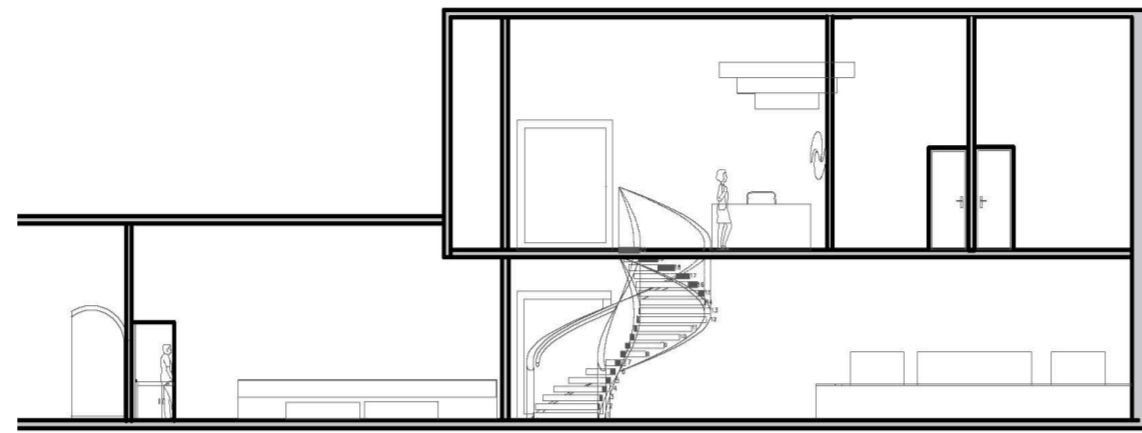
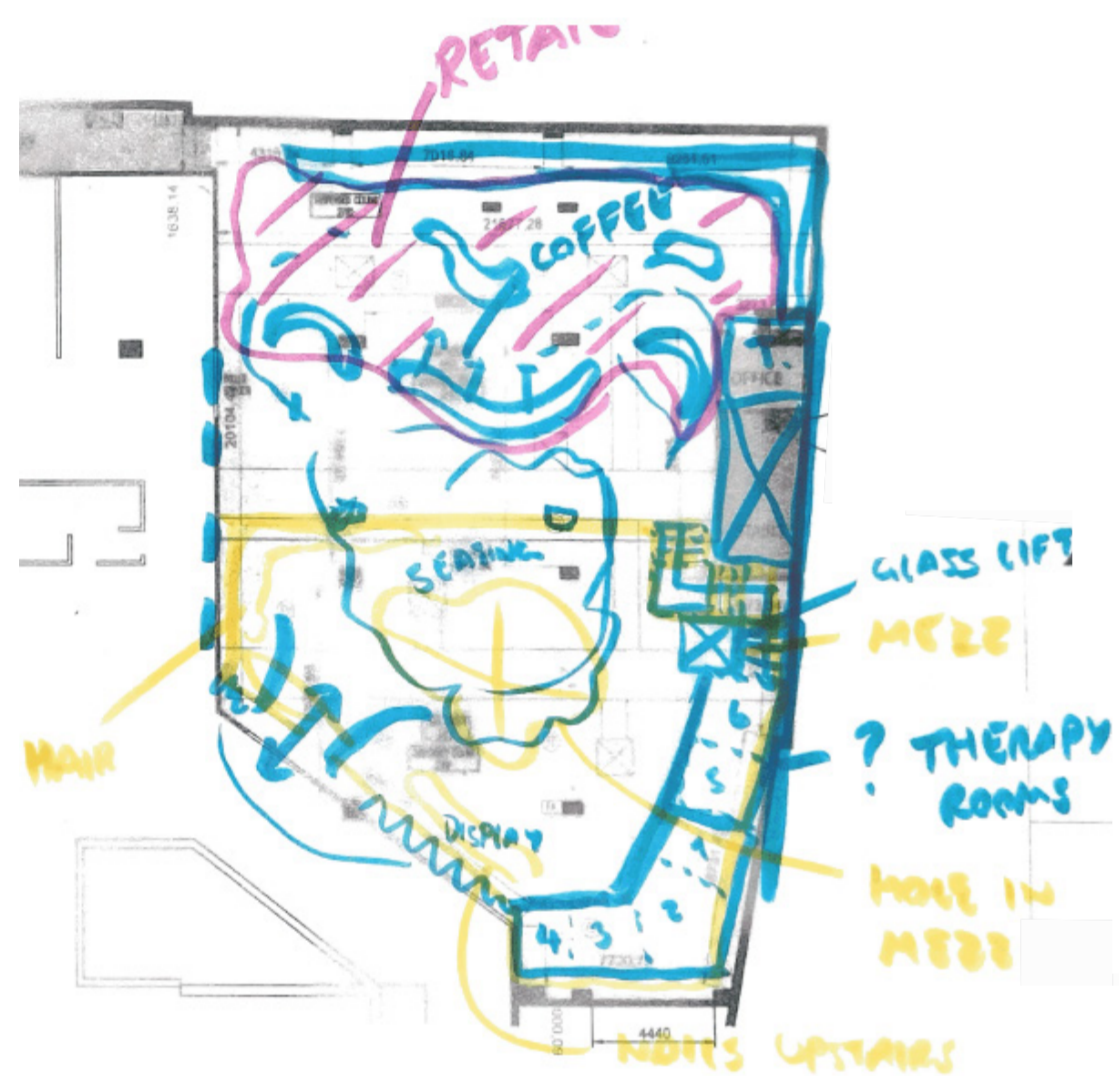
The uniqueness of this cafe is that it recycles all of the coffee grains that it uses and it is designed to have an area that displays the whole process of the coffee grinds and how they are reused to make coffee leather from which the shops furniture will be made of and merchandised items will be sold and displayed in the shop. The coffee grinds are also used to make many of the beauty and hair products for use and for retail upstairs by the therapy and hairdressers department. These in-shop recycled grinds will be also processed to create a coffee plastic replacement, both processed and used on the shop from the cups, trays, cutleries, mugs, bottles, bins and many more item. Benefiting from products that are 100% recycled, sustainable, reused, biodegradable and fully plant based, great for the environment too. All the coffee grinds used in the shop, get stored and recycled pressed and preserved, showing the whole process step by step as they are transformed on the display glass area on the ground floor.



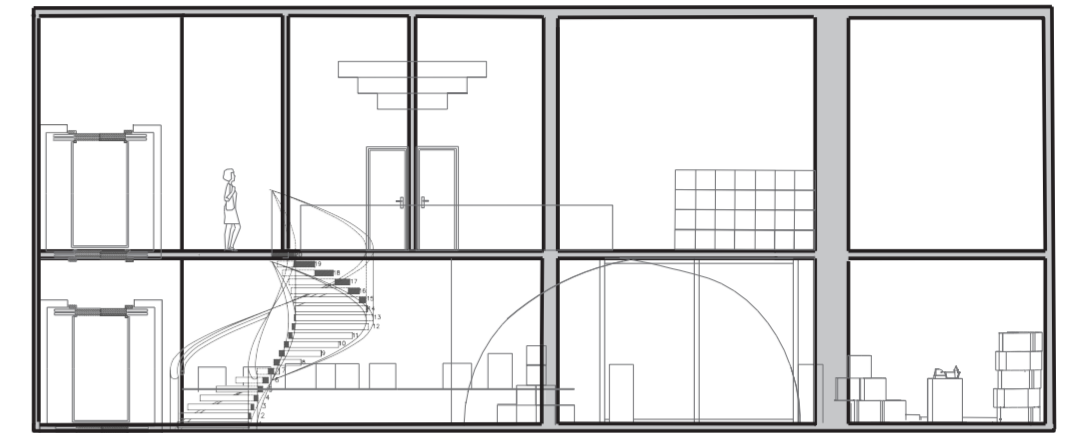
- Residential units
- Our shop, unit no 62
- Everything marked in white is the rest of the centre, private / retail units.
- Pedestrian Route
- Entrances
- Greenery
- Vehicle Route
- Underground
- Train Station
- DLR
- Other coffee shops



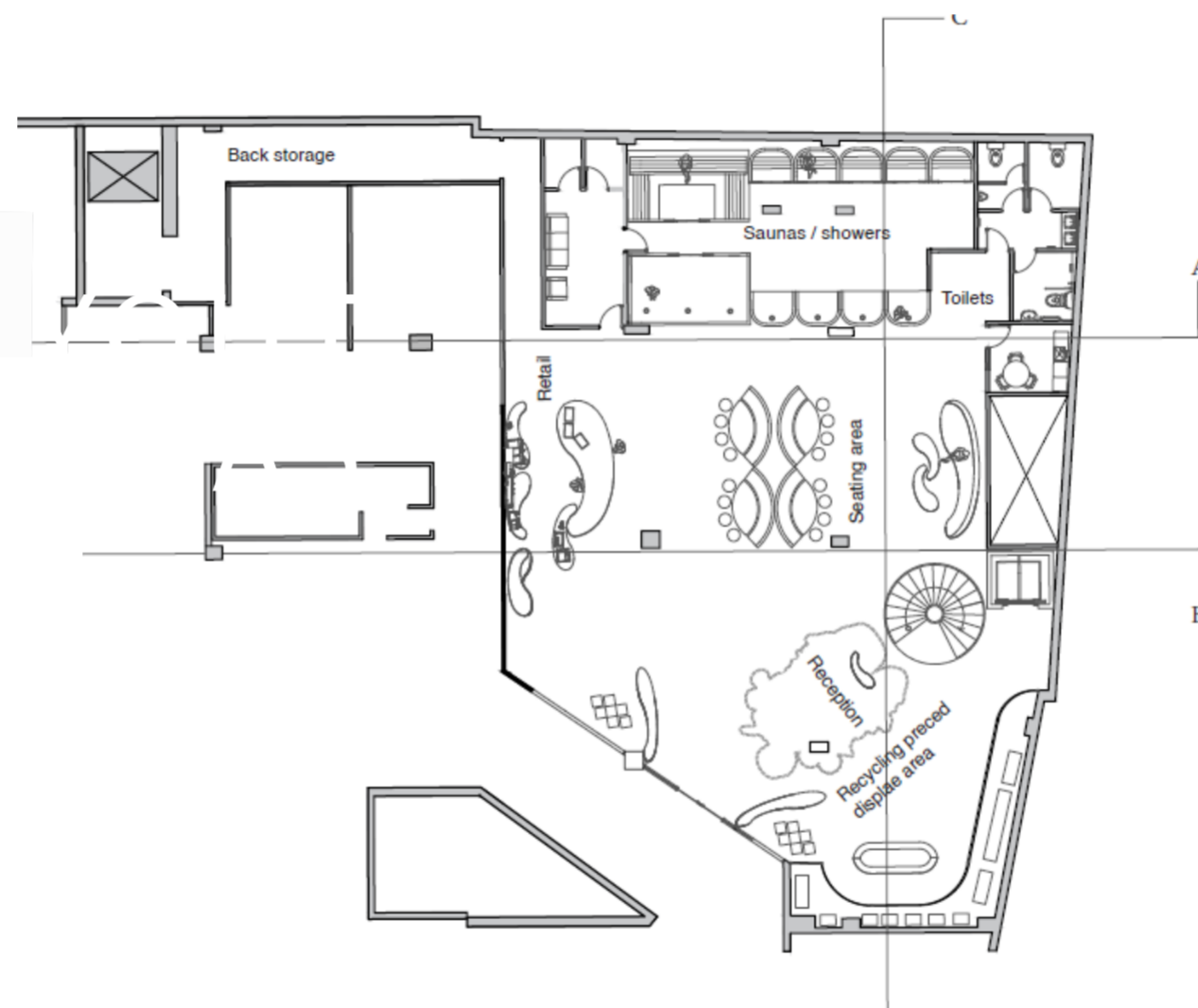
COFFEE +



Section C-C 1-150

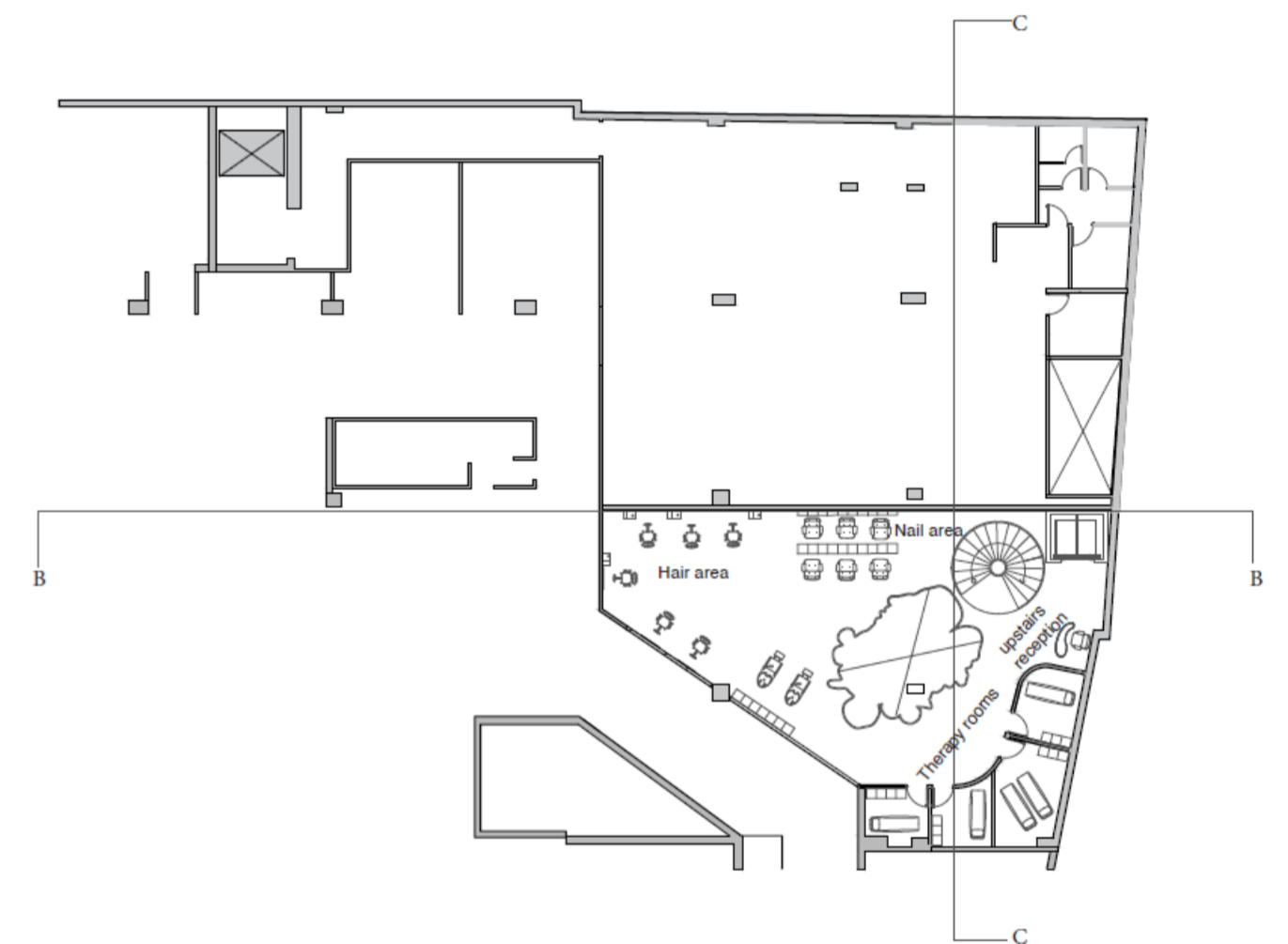


Section B-B 1-150



Ground Floor Plan

Ground floor plan 1-100 showing the different areas of the shop

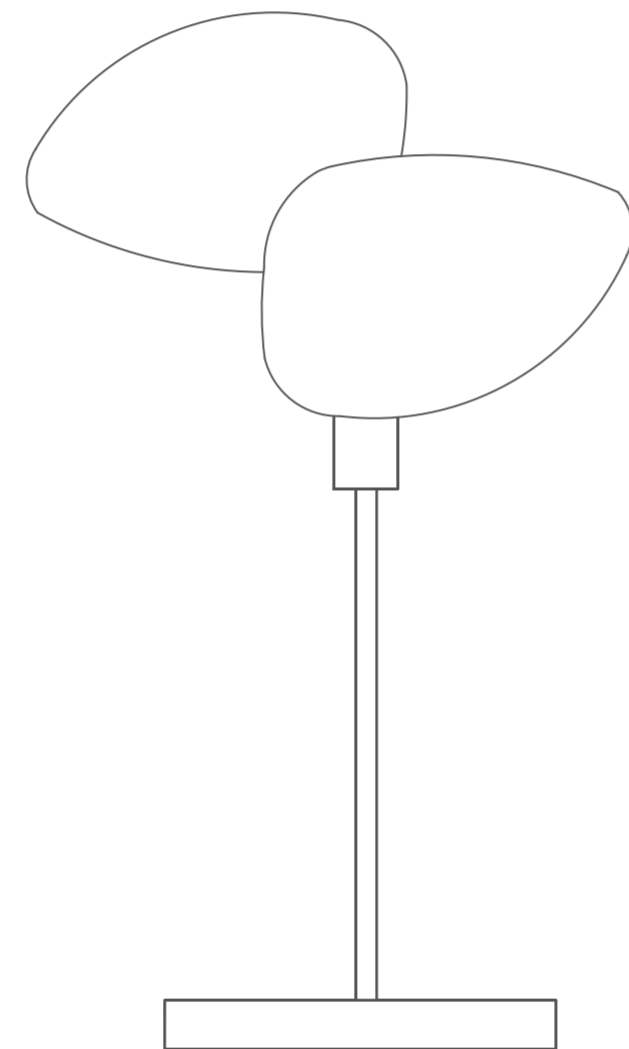


First Floor Plan

First floor plan 1-100 showing different areas of the shop

Concept diagram, developing ideas

LAMP DESIGN



ADDICTION LAMP

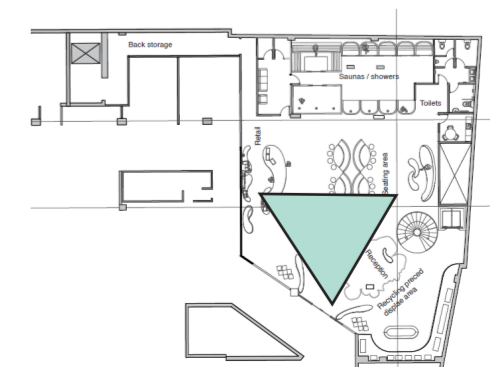
This is a lamp made out of recycled coffee grinds, I wanted to design a table lamp that could work following the same sustainable concept of the Coffee Plus project, making use of the coffee grinds and to go very well within that brief. Since the coffee plus project was all about the reuse of the coffee bean, the design of this lamp would be the same, that has no limits but function in all different ways, as a floor, desk, wall or ceiling light. The challenge I set myself was to design this lamp in a coffee bean shape that is 100 % natural and 100 % up-cycled and recycled but at the same time projecting the light equally up and down, creating the yin and yang balance.



Concept image made with cut outs of different parts of the proces, set on real coffee grains to fully keep the ethos of the project alive throughout all processes.



Addiction Lamp



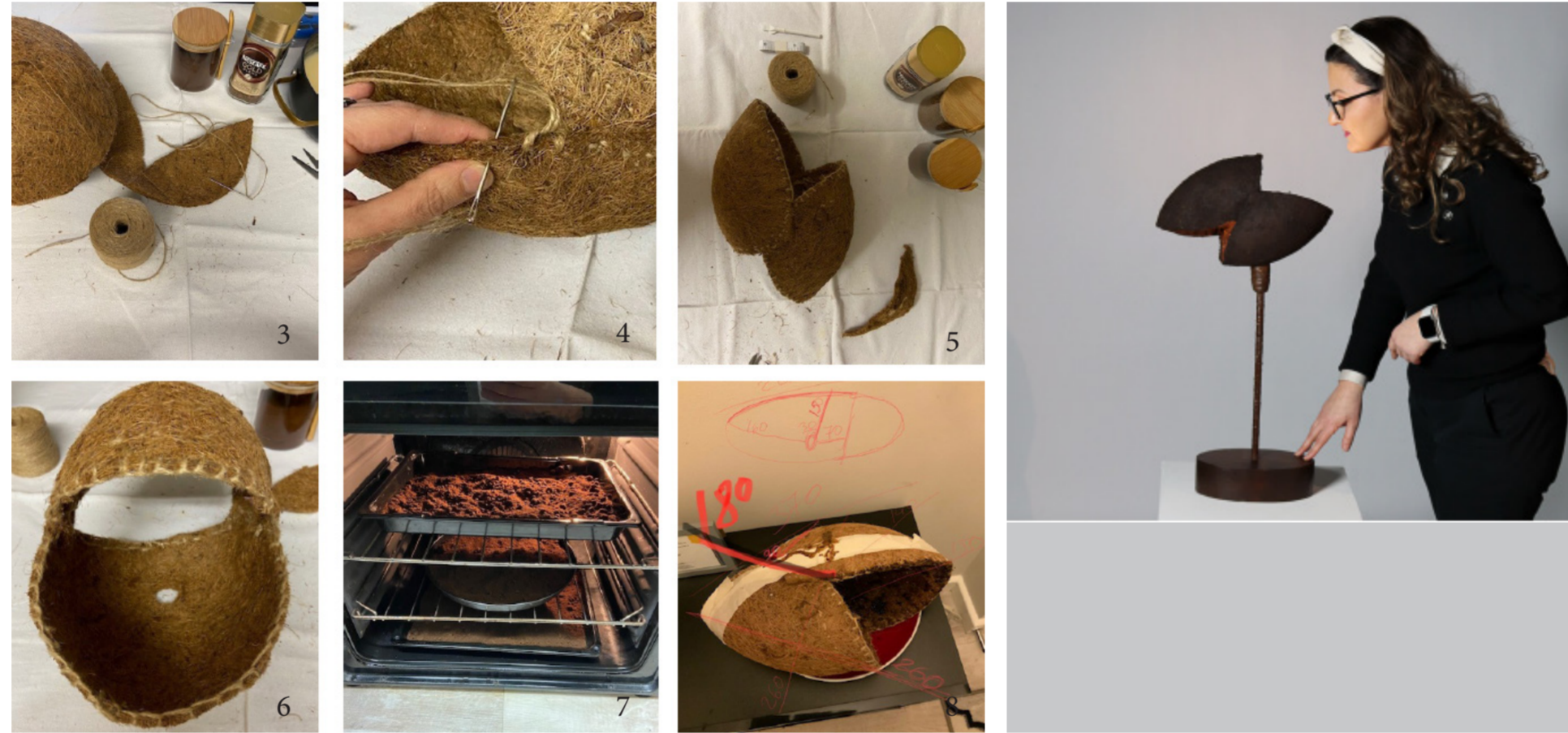


Addiction Lamp



COFFEE +

These images show how this sustainable lamp design is achieved.



The lamp I designed is made of coconut fibre and coffee grains collected from the Costa coffee we have in our university. For the shade, a few layers of fibre and the coffee grains are put together with natural home made glue, it took a few rounds as I had to let them dry in between. The arm of the lamp is made of bamboo stick, that holds the wire inside and it is than wrapped in garden twine and finally covered in home made lacquer, mixture of the home made glue and diluted coffee grains. The base is made of a wooden scrap plank, prepared and shaped in the wood workshop and covered in home made lacquer. All the electrics were up-cycled and put together in order for the lamp to function fully.



01 | LAMP PROCESS

MAKING THE LAMP

COFFEE +