

the fold.



A space for women to make, within environments they are often excluded from.

2%

Only around 2% of skilled, hands-on roles involving tools, machinery, and fabrication are held by women.

67%

The number of women entering trade-based training and apprenticeships has increased by 67%, though this growth remains concentrated at entry level.

the concept.

The Fold is a women-focused making and cultural space located within 520 Sauchiehall Street, a former entertainment venue in Glasgow. Responding to the site's history of positioning women as objects of display, this project rethinks how visibility operates within space, shifting women from subjects of observation to active participants. This is explored through a focus on fabrication environments, where women remain underrepresented despite growing participation in the industry.

The building is divided between public gallery spaces that foreground women's craft and private making facilities that address the gender imbalance often present within fabrication environments. A 12-metre vertical void, known as The Fold, becomes the central spatial device of the project, mediating moments of visibility while separating public and maker spaces.

Femininity is explored throughout as both a conceptual and material language. Stereotypical feminine aesthetics are contrasted with an angular spatial language and raw industrial materials, creating an atmosphere shaped by contrast and tension. The project aims to foreground women within both cultural and fabrication spaces while challenging traditional narratives of representation.



A model advertising the film Cleopatra in a glass case, Curzon 520 Sauchiehall Street, December 1963

Source: GlasgowLive

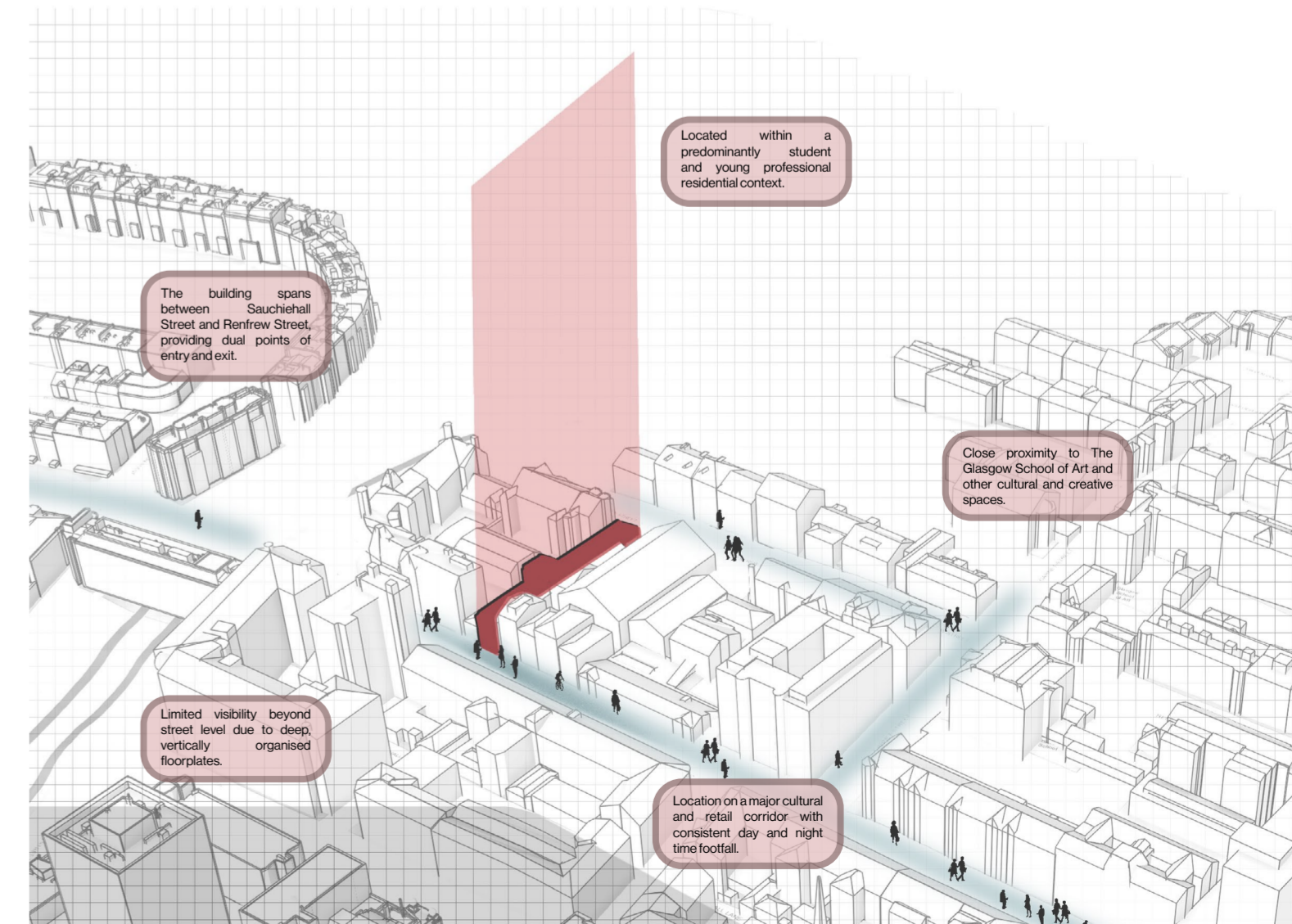


the site.

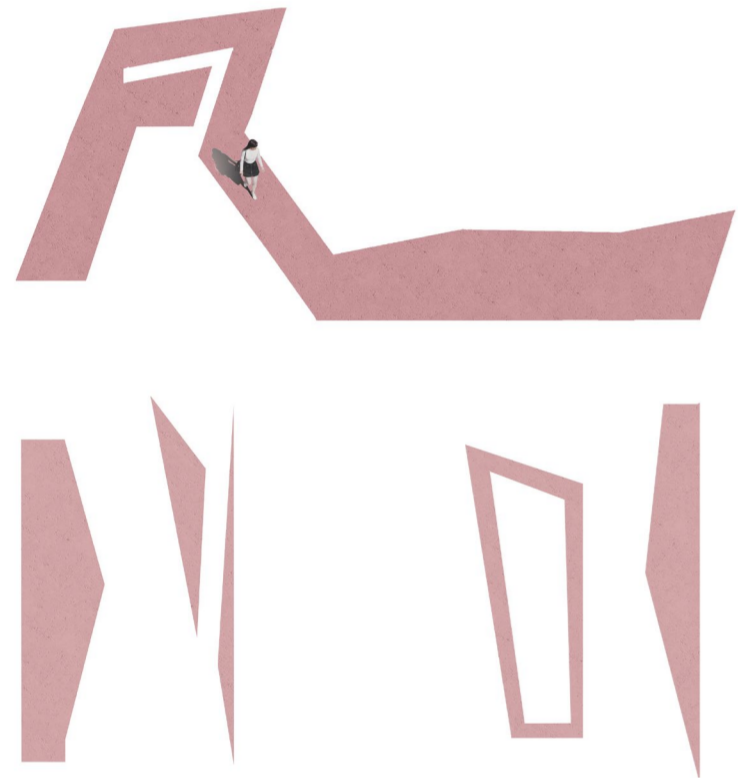
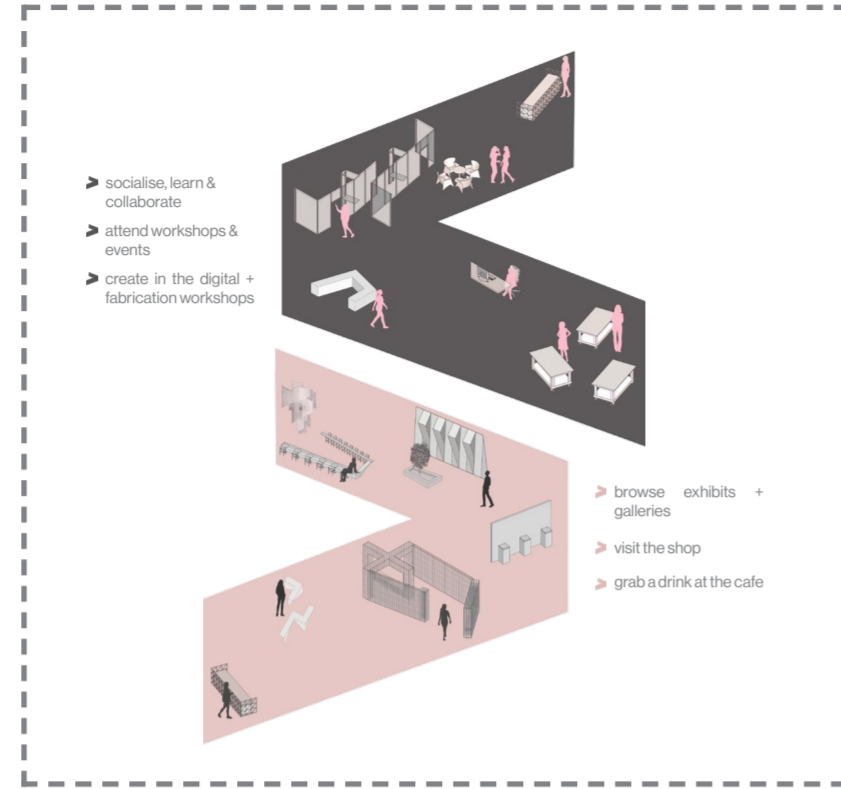
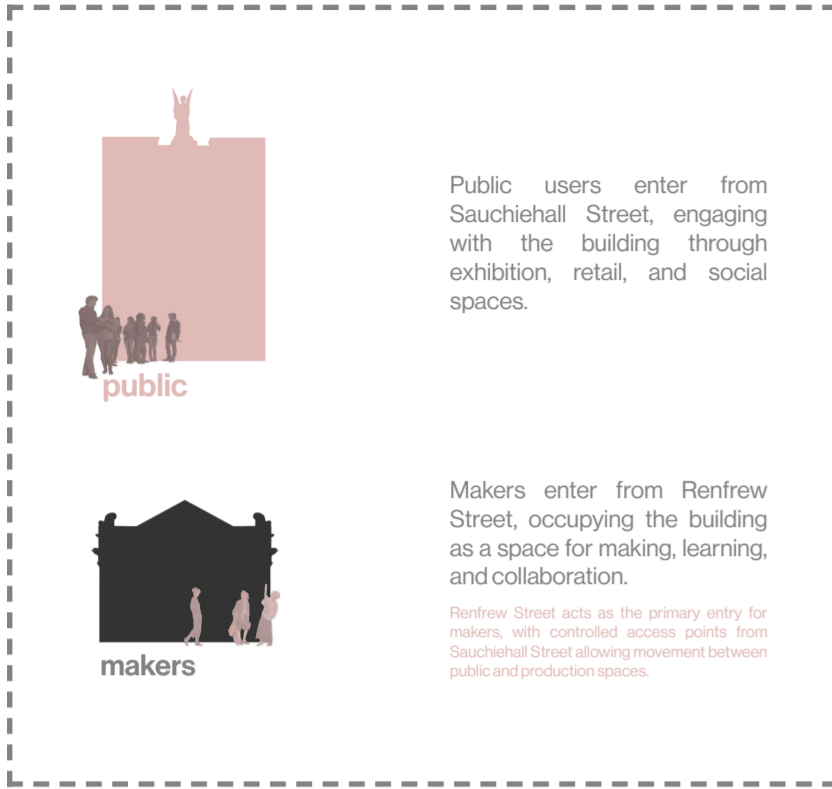
520 Sauchiehall St // 341 Renfrew St.

520 Sauchiehall Street is a B-listed late Victorian commercial building occupying a through-block site between Sauchiehall Street and Renfrew Street.

This contrasting architectural language of the existing building informs the project's material and spatial approach, balancing decorative elements with more raw and functional qualities. The building's through-block condition and dual frontage further support a strategy of separation and controlled movement, allowing distinct public and makers' journeys to be established across the site.

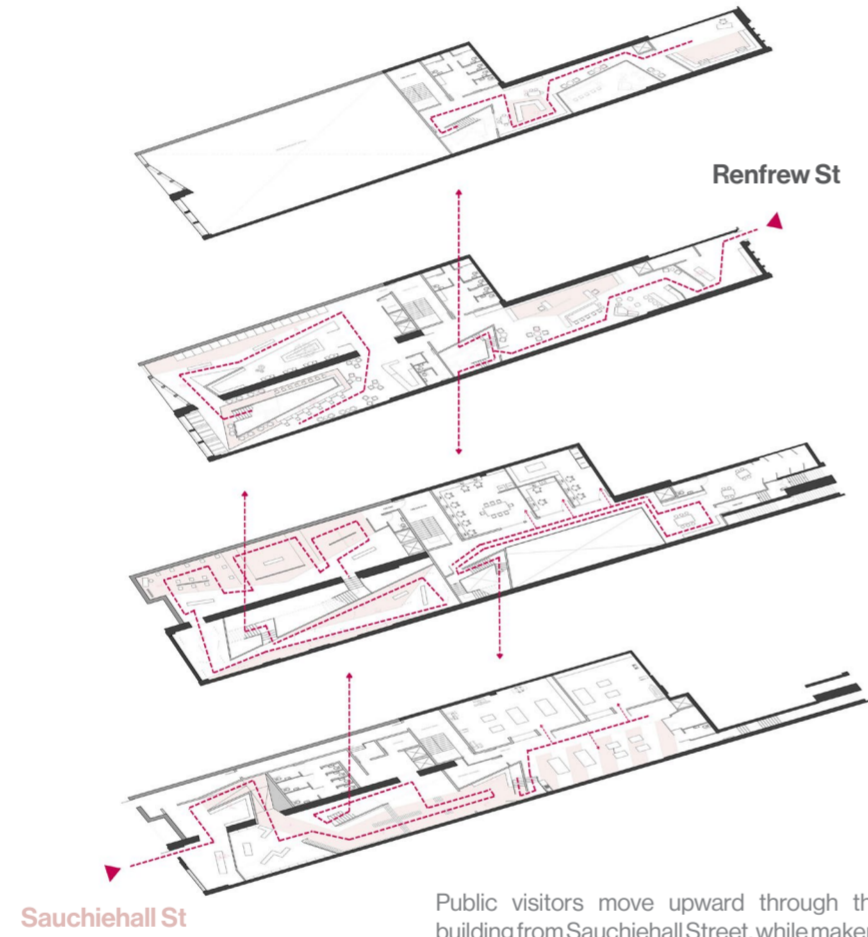


two journeys.



navigating the fold.

Floor colour is used as a wayfinding strategy throughout, guiding movement and drawing attention to key spaces and transitions within the building.



Public visitors move upward through the building from Sauchiehall Street, while makers descend from Renfrew Street, creating two distinct but interconnected journeys.

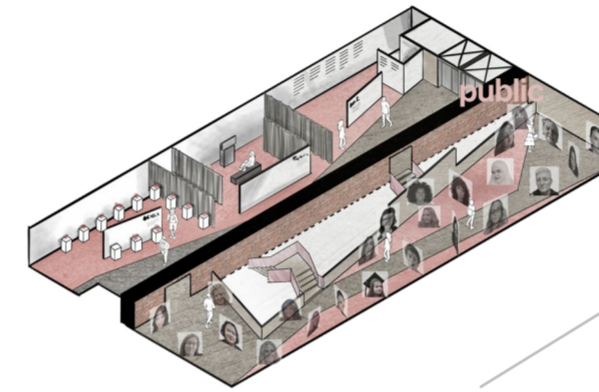
spatial programming.

2



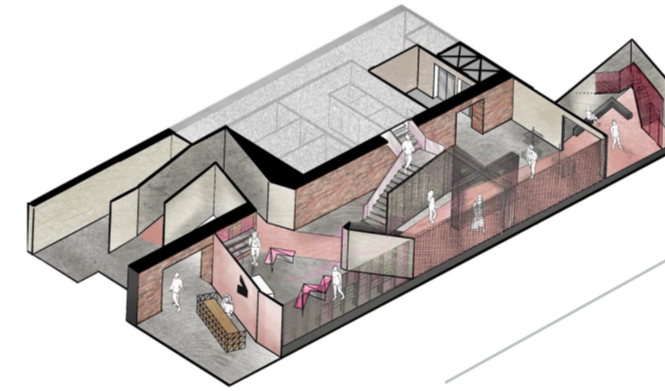
the archive courtyard
cafe | bar

1



flex gallery

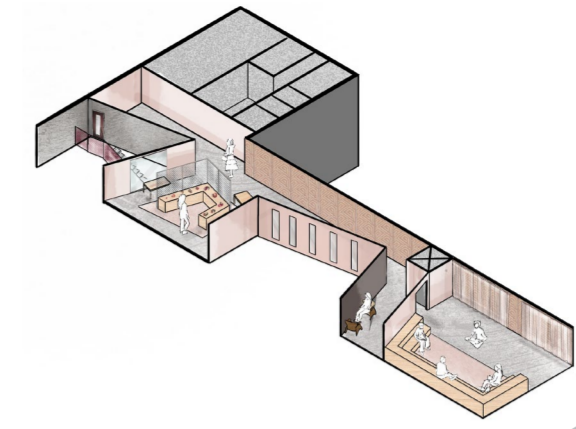
G



public reception
the fold shop
the grid makers gallery

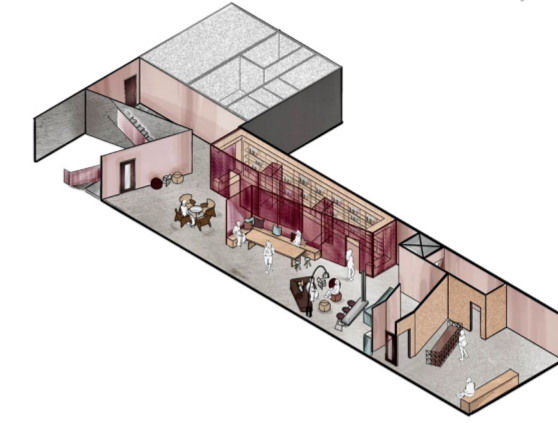


3



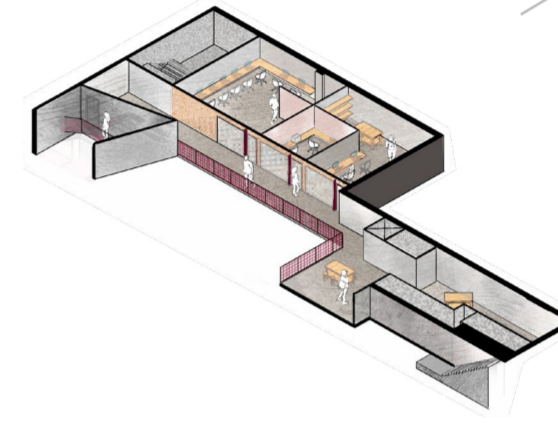
material library
flexible event space

2



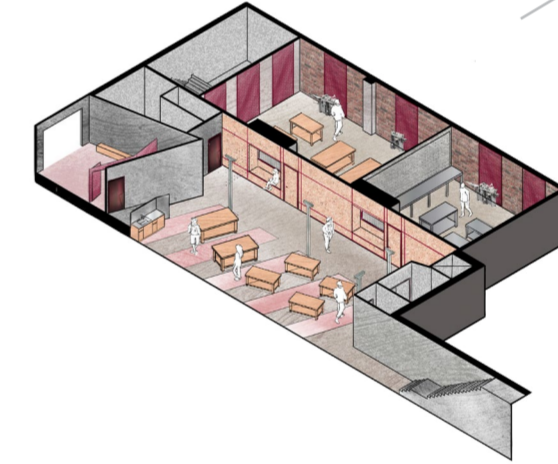
makers reception
social & collab space
library

1



digital fabrication labs
open workspace
project storage

G



wood & metal shop
open workshop



connect + divide.

The ground floor establishes the project's primary spatial strategy, defined by a division between public and making environments. This relationship is structured around The Fold, a 12m-high void that continues through all floors.

The Fold operates as both divider and mediator, enabling separation while carefully framing visual connections. It serves as the main circulation route for makers, linking social, collaboration, and workshop spaces together across levels. Public access is limited to the ground level, forming part of the grid makers gallery.

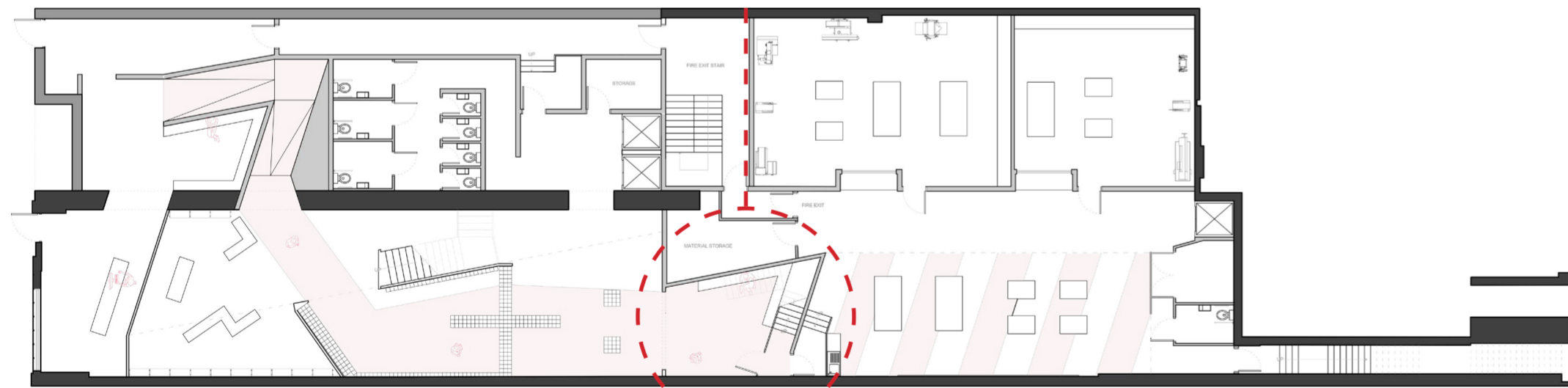
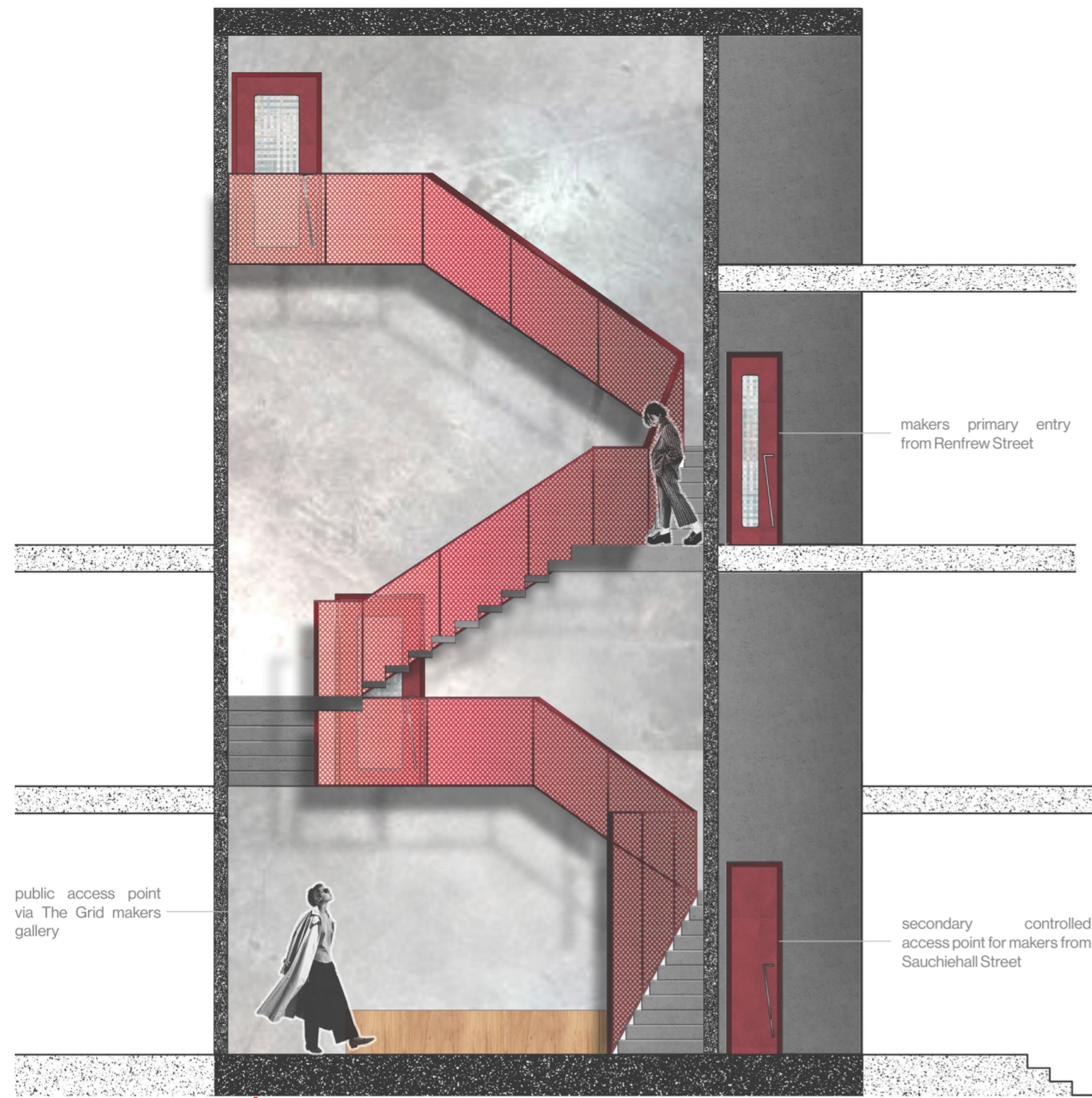
maker access points.



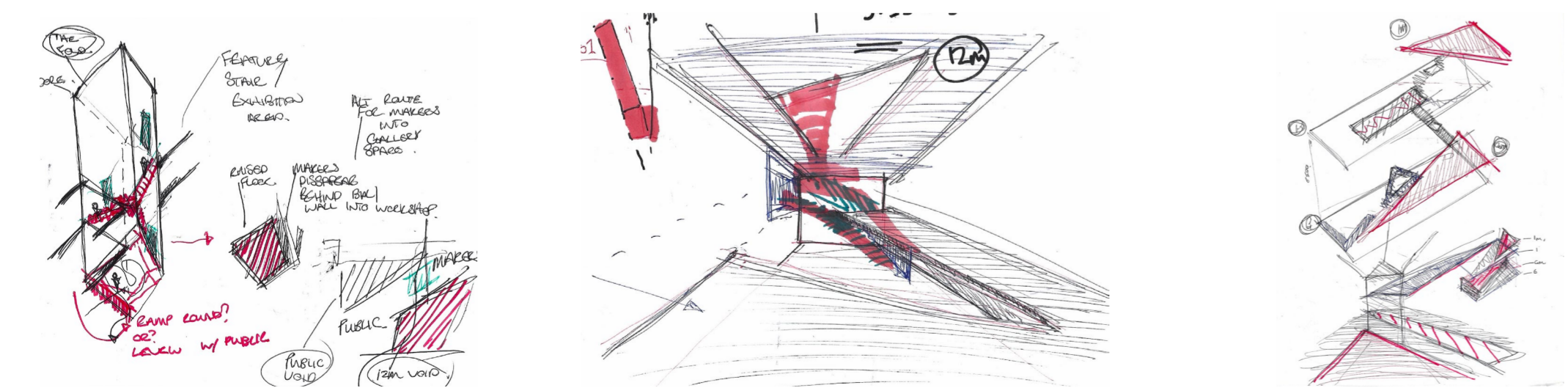
public-facing access internal maker access

Solid doors connect to public areas via controlled access, maintaining privacy while signalling a transition out of the makers' space.

Glazed doors are used within the makers area, allowing visibility and helping users remain oriented within internal spaces.



ground floor plan.



developing a spatial language. Initial sketch explorations testing ideas of visibility and spatial tension.

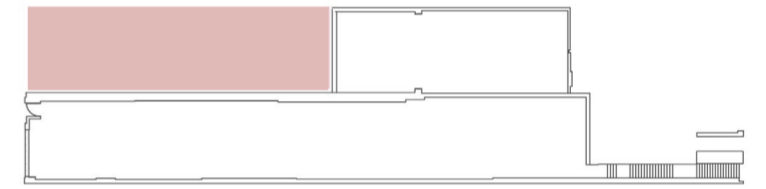
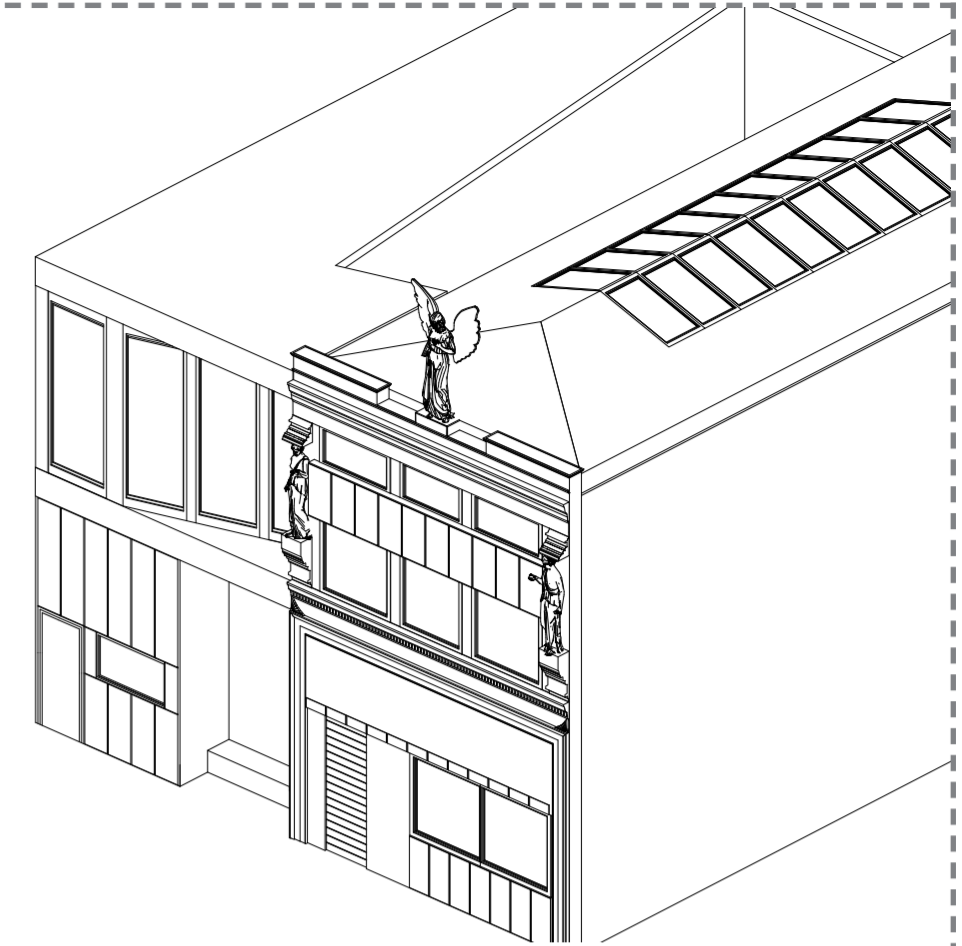


the extension.

The extension was introduced to make full use of the vacant plot on site and to resolve spatial limitations within the existing structure. By expanding the footprint, it creates the capacity to organise circulation more clearly and strengthen the separation between public and makers' routes.

The new volume draws from the existing building's lines and material language in a more contemporary way, while introducing moments of contrast and angularity that reflect the wider project.

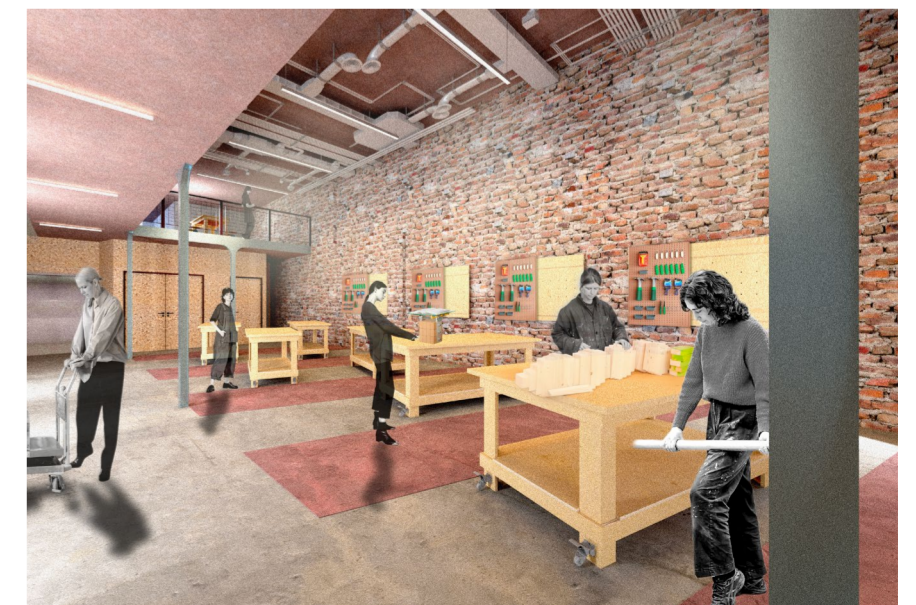
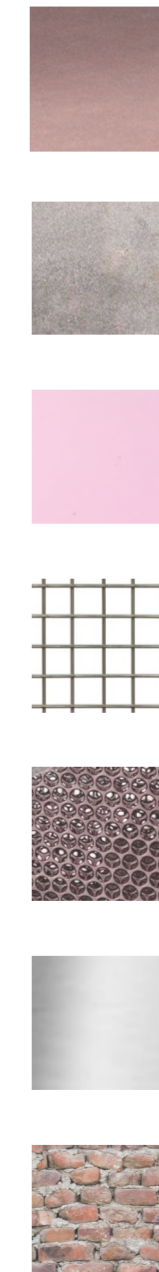
The extension uses pre-patinated zinc cladding, referencing the tone of the building's lead cladding. This creates a visual relationship with the existing facade while maintaining a clear distinction between old and new.



femininity as a material & spatial strategy.

Materials are used to both lean into and contrast stereotypical feminine aesthetics. Glossy pink surfaces are paired with steel and concrete to create a juxtaposition that reflects the complexity of femininity. Existing elements such as the exposed brick structure have been retained to ground the project and reinforce these contrasts.

Angular spatial geometry challenges the typically soft and passive qualities often associated with spaces for women, while also breaking up the deep floor plates and guiding movement through the building.

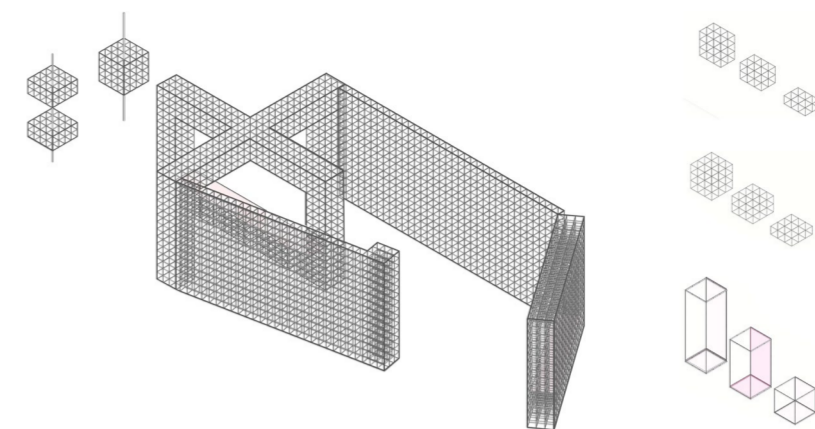


public experience.

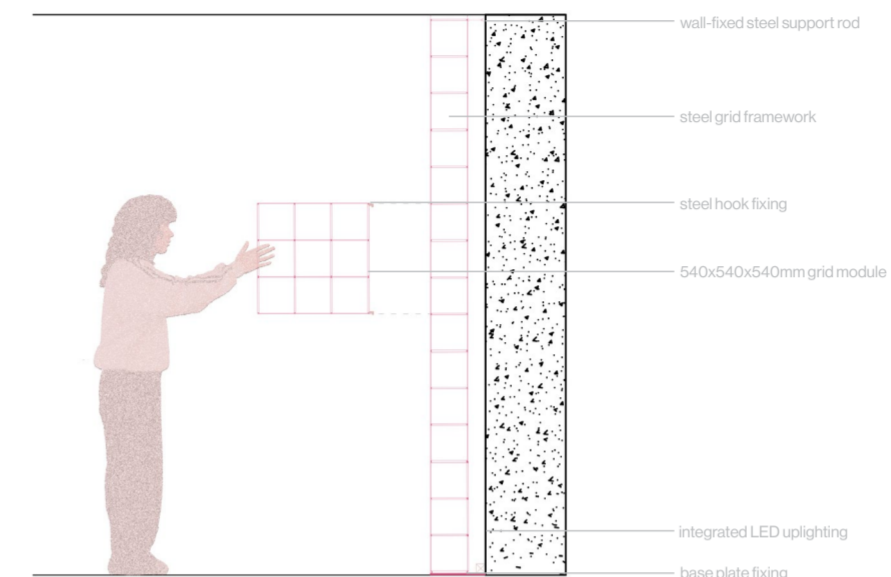


the grid gallery.

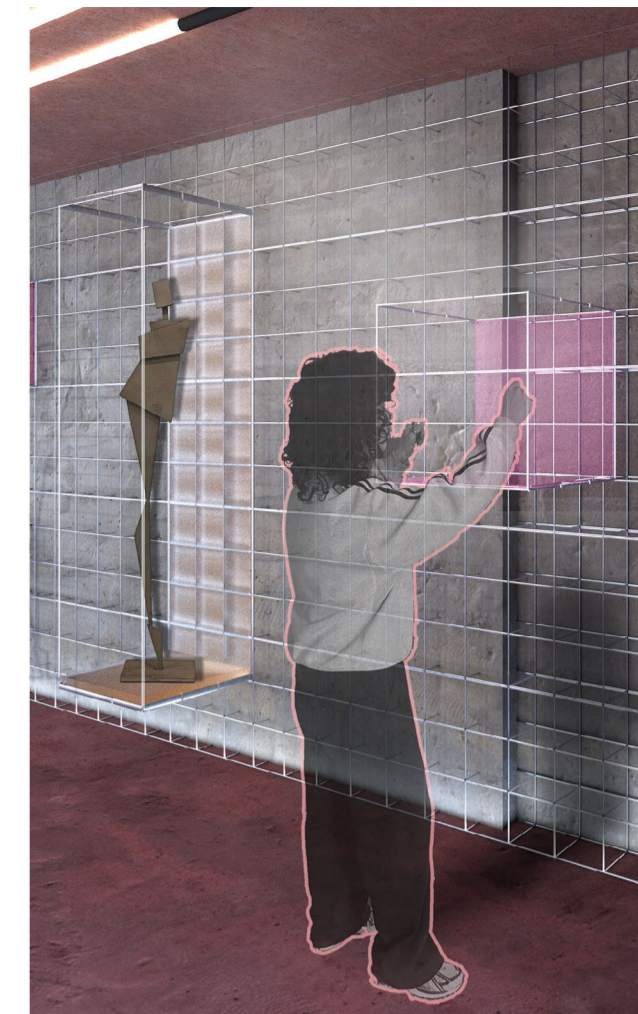
The Grid forms the makers gallery within the public space, presenting work made within the makers workshop. The structure references the language of a cage, reinterpreting the building's history to foreground women's creations.



steel grid framework + module variations.



modular display detail.



A lightweight steel grid framework supports removable display modules, allowing for flexible arrangement and reconfiguration. The system enables efficient installation while accommodating a range of exhibition formats.

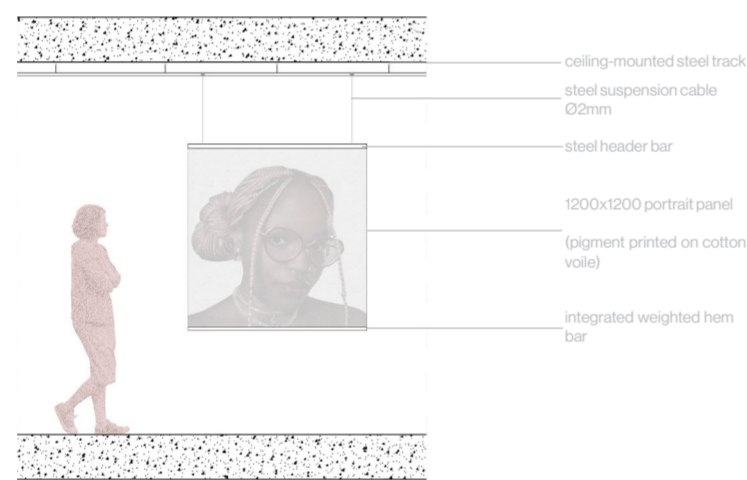
100 faces of femininity exhibit.



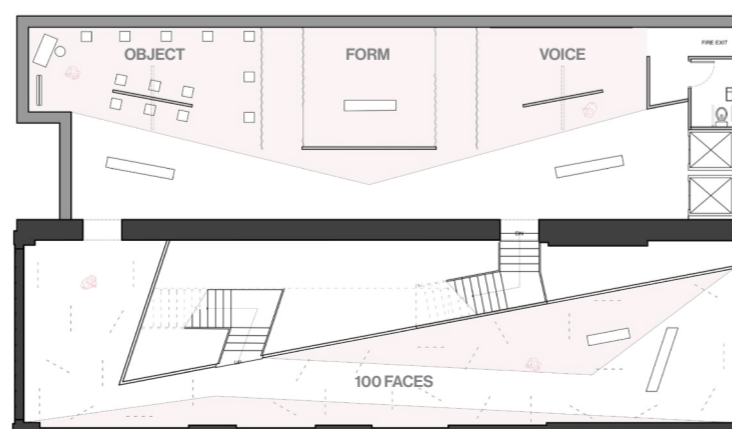
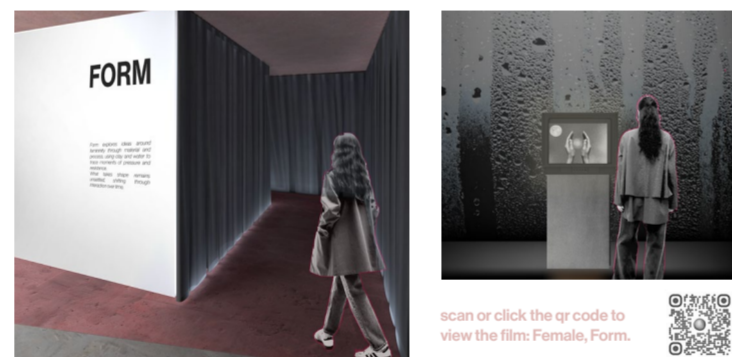
a collective portrait.

A visual archive of the 100 participants whose responses inform this exhibition, expressed through layered portrait panels that form a fragmented yet collective spatial experience as visitors move through the installation.

This project has been shaped by the contributions of the 100 participants, whose openness and insights are gratefully acknowledged.

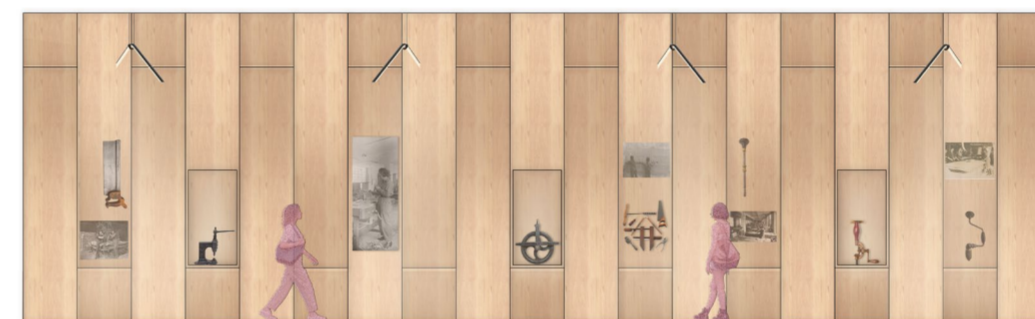


suspended portrait system detail.



First Floor | Exhibition Key

women's making archive.



archive wall detail.

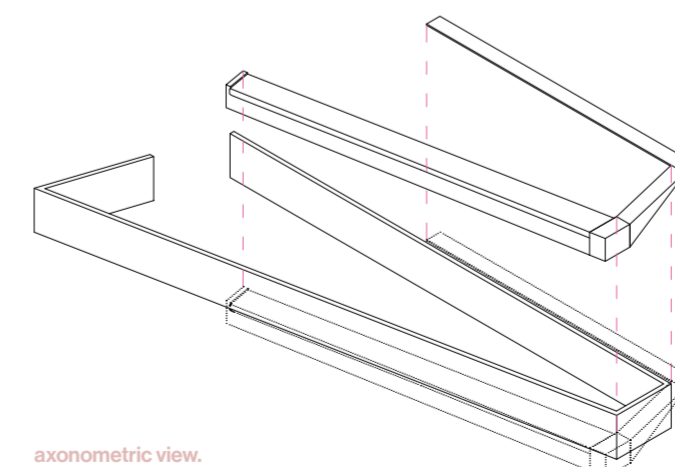
The women's making archive is designed to foreground women in craft from past and present, bringing together historical and contemporary work within a shared space.

The materiality of the archive is more grounded and warm in comparison to the other areas of The Fold gallery, creating a softer and more intimate atmosphere in response to the reflective nature of the space.

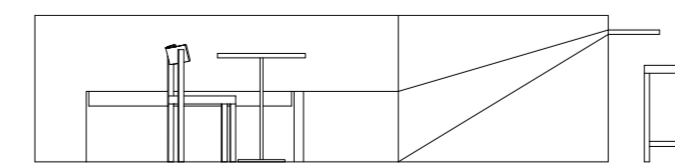


the fold cafe.

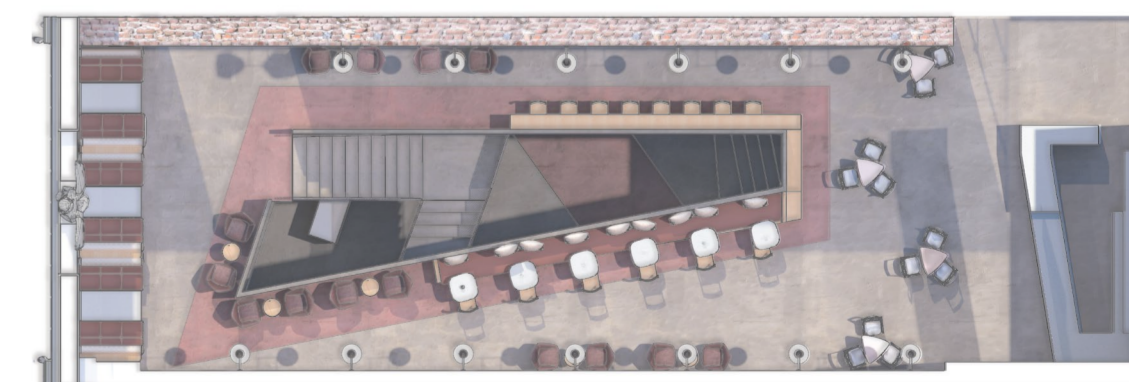
The cafe acts as a shared social destination within the building, accessible to both public visitors and makers through controlled points of entry.



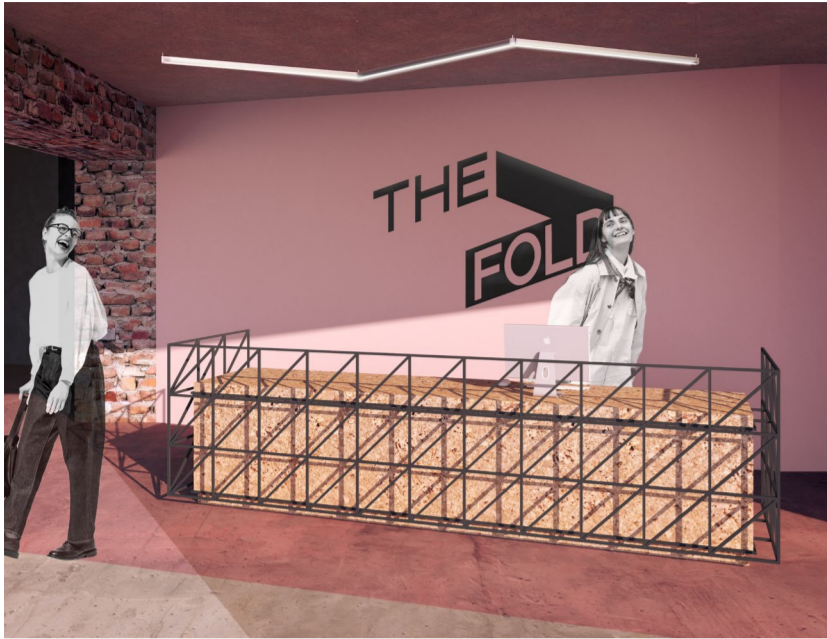
axonometric view.



transitional banquette detail.



maker journey.



arrival. The primary point of entry for makers, providing orientation, support and access to the wider facilities.



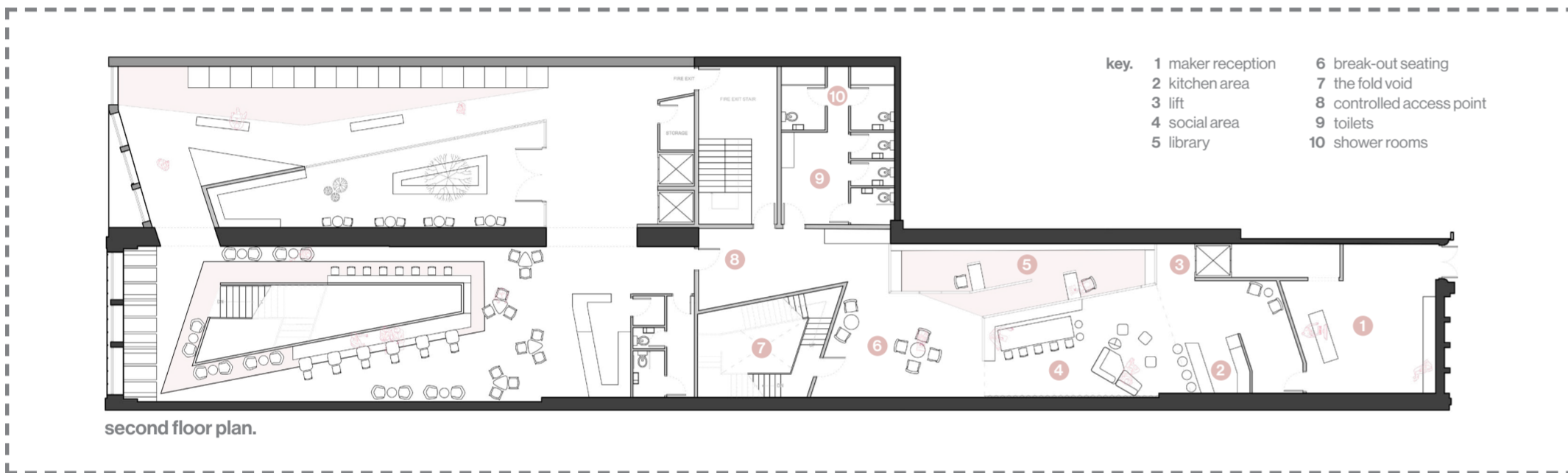
the fold. The Fold connects makers to social, workshop and collaboration spaces across multiple levels.



community.

Informal social spaces provide opportunities for collaboration, knowledge exchange and community building beyond the workshop environment.

social + collaboration zone.

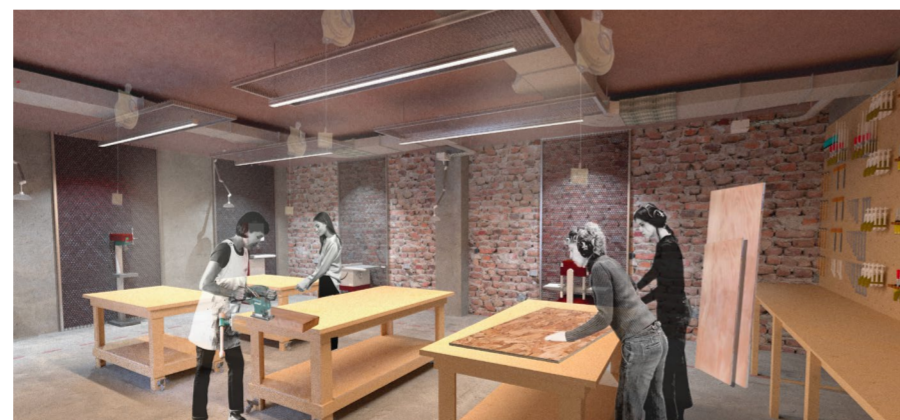


making.

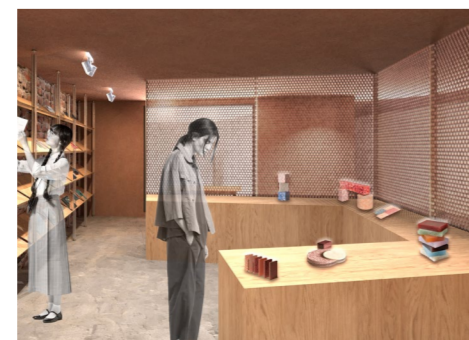
Within The Fold, makers have access to dedicated digital fabrication facilities, wood and metal workshops, open workspaces and a material library, supporting learning, experimentation and production across a range of skill levels.



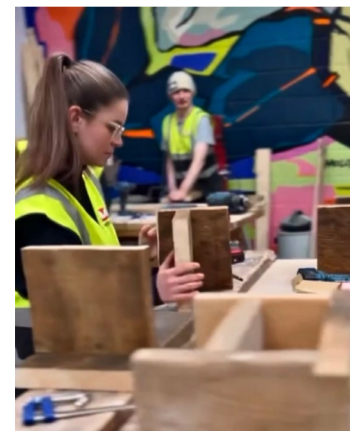
digital labs.



wood shop.



material library.



learning through making.



Participating in a local women and non-binary woodworking course provided first-hand insight into how makers occupy, learn and collaborate within workshop environments. Observations highlighted the importance of an open and unthreatening workspace with clear sightlines, accessible tools and flexible workspaces that support both independent work and peer-to-peer learning.

These findings informed the design of the making and workshop facilities, where work zones are combined with social and collaborative areas to encourage confidence building and knowledge exchange between users with different levels of experience.



the library.



break-out + events spaces.