

COMMUNITY ENGAGEMENT

Scottish Canals have established strong connections with local community groups to increase engagement with the canal through nature walks, arts activities and heritage talks. However, there is currently no central gathering space to support these efforts, where people can meet, socialise and spend time before or after group activities.



Firhill Basin.



Pinkston Watersports.



Gathering Ground.



Stockingfield Bridge.



- Sport/activity centres
- Educational
- Community Centres
- Creative Arts
- Religious sites
- Commercial

■ SITE
Applecross Street
Glasgow
G4 9SP



THE BLUE CORRIDOR

Positioned beneath North Glasgow, the canal has transformed from what was once a source of division into a vital connection between North and Central Glasgow. Through the creation of safe and accessible pathways, it now stitches surrounding communities together, forming a thriving corridor of movement, activity, and social interaction.

APPLECROSS HERITAGE CENTRE

APPLECROSS IONAD DUALCHAIS

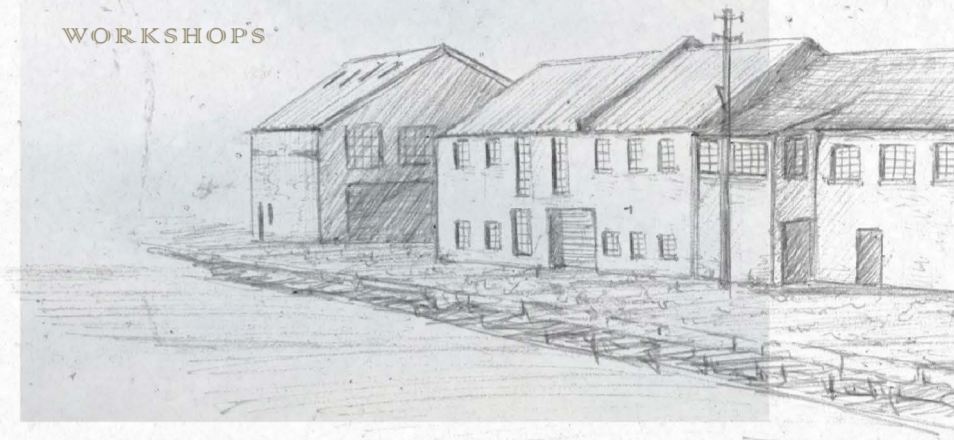
This project explores the relationship between heritage and community. Through extensive research into the site's industrial past, I uncovered the history of a forgotten part of North Glasgow and used these findings to inform the design of a heritage centre. While the area is often defined by socioeconomic challenges, it is equally shaped by a strong sense of community.

The proposal aims to celebrate local history, create opportunities for people to learn and connect, and support regeneration efforts. By acknowledging the area's industrial legacy and the restoration of the Forth & Clyde Canal, the project strengthens connections between people and place.

COMPLETING THE CANAL'S REGENERATION BY REVITALISING TWO HISTORICALLY SIGNIFICANT SITES AND PRESERVING THEM FOR FUTURE GENERATIONS...



THE EXISTING APPLECROSS WORKSHOPS

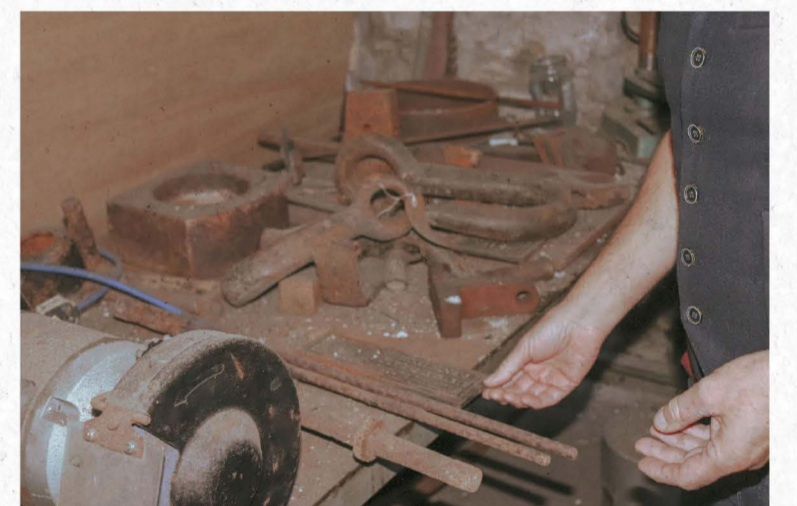


INTERIOR SITE VISIT

I contacted Scottish Canals and spoke with resident historian Chris O'Connell, who arranged an interior site visit.

During several visits, I engaged with workers, some of whose families have maintained the canals for generations. They shared stories and memories that revealed layers of local history, highlighting the importance of preserving collective memory as a way of grounding community identity.

Once the beating heart of the neighbourhood, the site now stands largely forgotten despite its deep local significance.



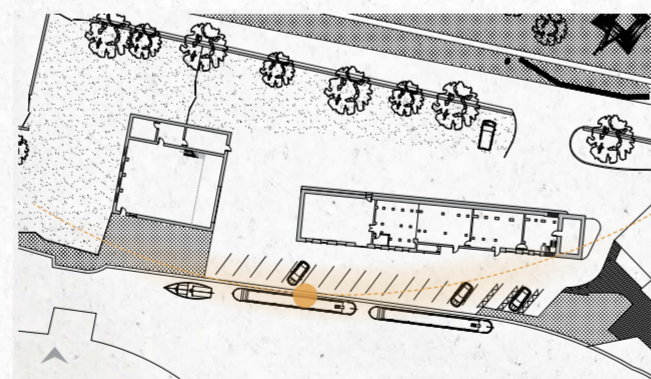
ONCE A WORKING SMIDDY, FORGING THE METALWORK THAT POWERED THE CANAL...

THE CLAYPITS ACTIVITY MAP

The Claypits provide a safe haven for local wildlife and act as a vital resource, connecting locals to their natural landscape.

THE CLAYPITS NATURE RESERVE

At the threshold of this developing site, the 17-hectare Claypits Nature Reserve has transformed a former industrial wasteland into a biodiverse landscape. New bridges, walkways, and upgraded towpaths now position the canal as a key route for commuting, recreation, and active travel.



EXISTING EAST FACADE



TOWPATH BAKEHOUSE

THE BOAT YARD

DISCOVERING ROOTS
APPLECROSS MUSEUM



Local school groups can learn, play, and explore the world's first iron-built vessel.



Archival footage offers a glimpse into the lives that once shaped this landscape.



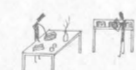
Dedicated ecological and Scottish craft literature, encourages engagement with the surrounding environment.



Views across Glasgow invite visitors to connect to the landscape, offering a moment of reflection and grounding.



The Lockkeeper's Shop sells locally crafted goods helping to support independent makers.



The Towpath Bakehouse provides a calm, welcoming space. Using locally sourced and sustainable produce.



WHAT CAN THE APPLECROSS HERITAGE CENTRE PROVIDES FOR VISITORS...

MATERIAL NARRATIVE



The site offered a rich narrative and a complexity that fuelled my conceptual journey. It has shifted from an industrial powerhouse to an ecological sanctuary. This transformation informed a design language intended to give depth to the interior, and shape a building that responds directly to its context.

Existing material samples that informed the final interior palette.



BASE PALETTE



Perspective of East end of the Smiddy building - Main entrance point.



Interior of reception area.



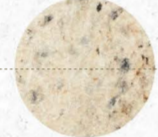
View into the Basin from South facing window overlooking the canal.

THE APPECROSS MUSEUM

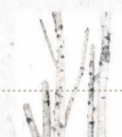
The museum explores the area's rich industrial history, from iron foundries to quarrying. Inspired by the canal, the spatial flow between spaces reflects the movement of water through a canal system. Visitors move from large open-plan areas into more confined spaces, drawing directly from the spatial qualities of a lock chamber.



Solidwool,
Welsh Mountain.



Birch panel,
Blue stain



Rammed earth
stratigraphy model.



Hammered steel,
floor accent.



The centre is designed to reflect both the surrounding landscape and the ethos of Scottish Canals through its materiality. The selected palette reinforces the centre's core values of sustainability and locality, with influences from industrial practices.

THE BASIN

Within the Basin, a listening booth, stratigraphy model, and reed installation create distinct moments of interaction that introduce the area's industrial origins and material practices. These elements help communicate the origins of Glasgow's sandstone tenements, as well as the clay and sediment deposits that shape the city's terrain.

Extensive research into reed explored its use as a natural building material, with thatching being one of its most established applications in Scotland. Selected due to its presence along the canal edge, the material directly connects the installation to its site context, highlighting traditional craft practices while promoting more sustainable approaches to building.

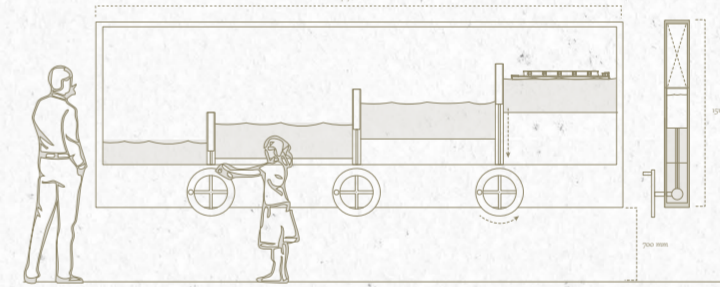


EXPLORE YOUR LANDSCAPE...

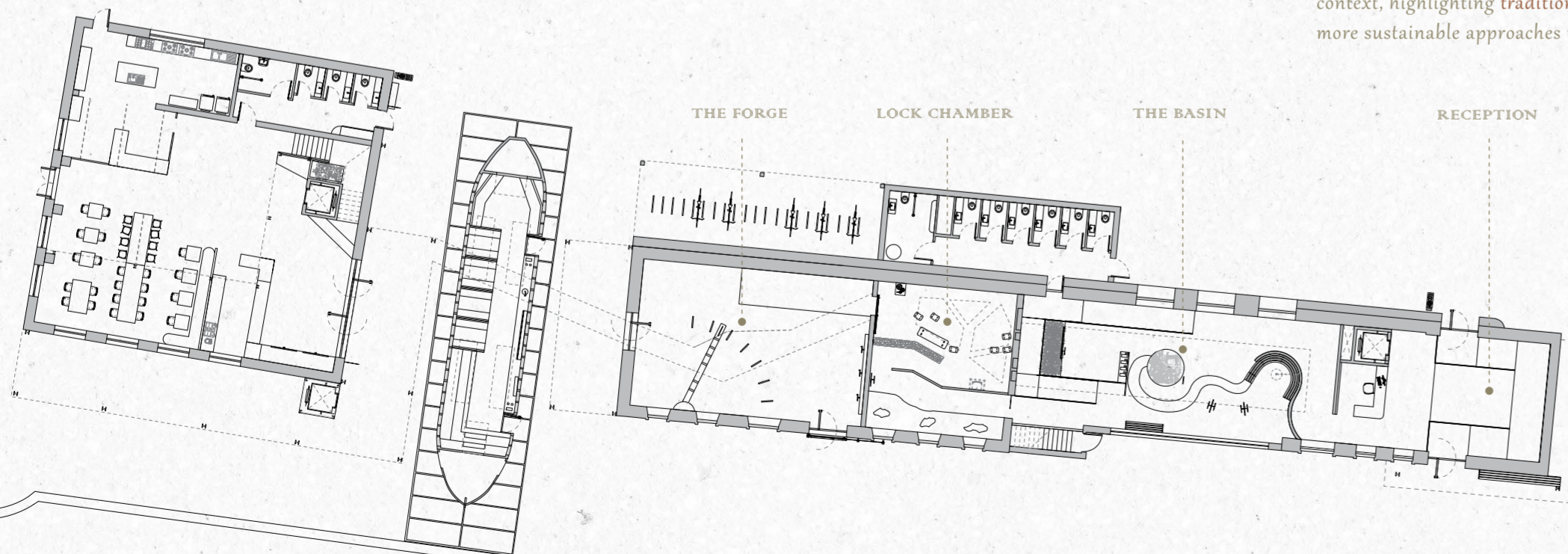


THE FORGE

The Forge is the oldest surviving part of the Smiddy, with layers of repair and alteration exposed within its rubble-built walls. This character was preserved to retain the atmosphere of the space. A moving seating feature was designed using a reclaimed lock gate handle and a working lock gate model, anchoring the space within the history of the canal.



Lock Gate mechanism model located in the Forge.



GROUND FLOOR PLAN



LOCK CHAMBER

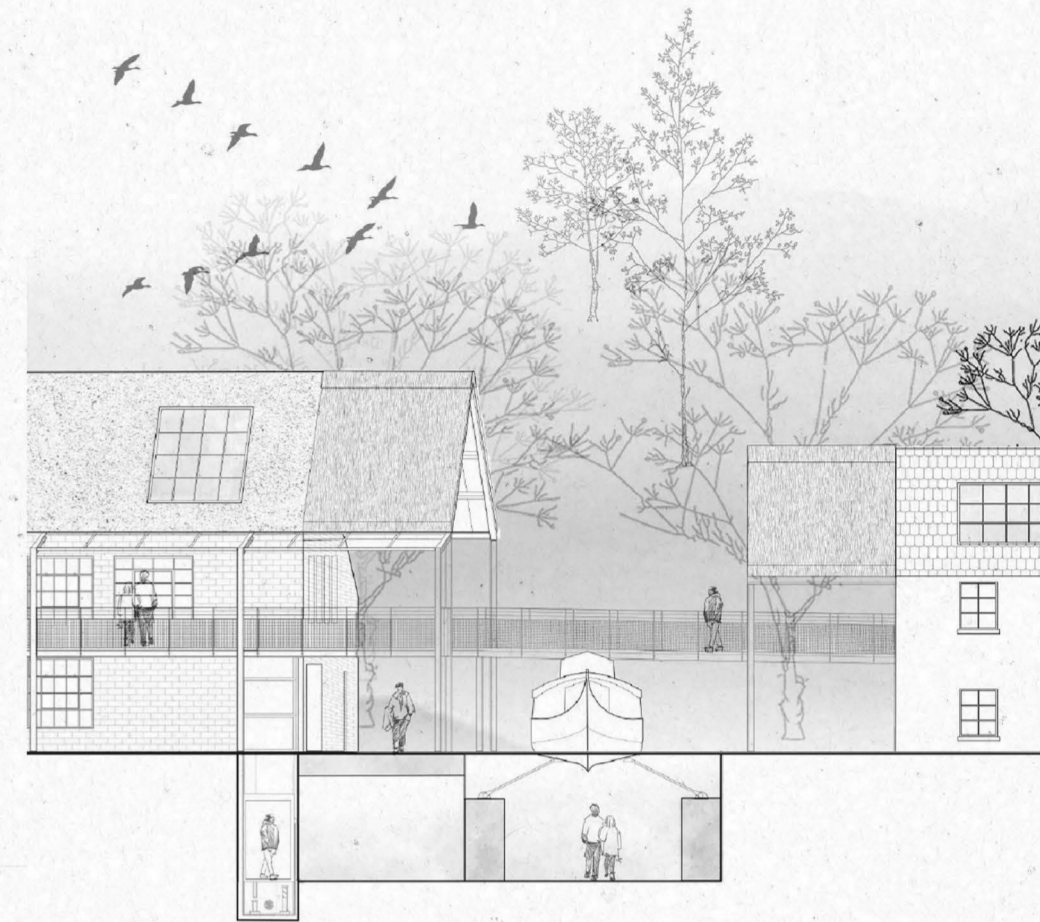
The Lock Chamber functions as both a cinema and exhibition space, displaying archival footage and antique machinery currently held by Scottish Canals in these buildings.



Rendered section of the Smiddy showing the Lock Chamber and Quiet Bank.

THE BOAT YARD

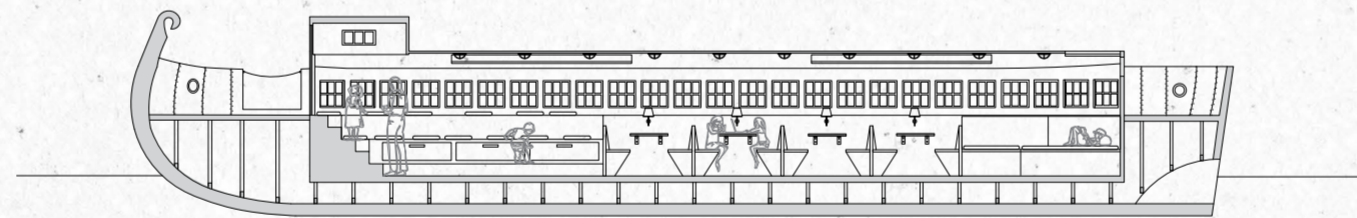
TRANSFORMING THIS FORGOTTEN MUSEUM RELIC INTO A PIECE OF LIVED INFRASTRUCTURE...



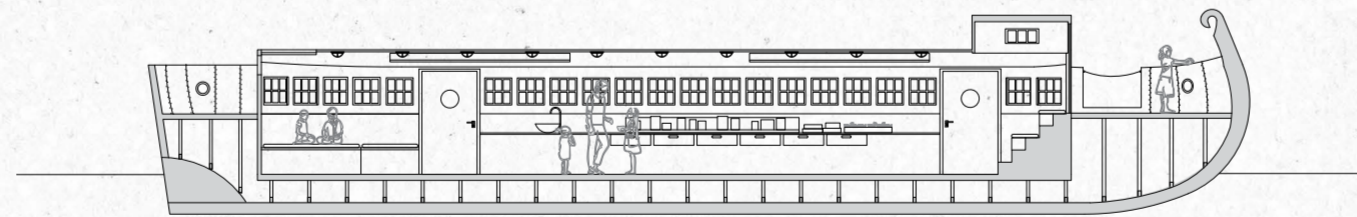
THE VULCAN PASSANGER BARGE

At the crossing between these two buildings sits the Vulcan, the world's first all-iron-built boat, launched on the Forth & Clyde Canal in 1819. The horse-drawn passenger barge operated in front of these workshops until its decline. A replica was later constructed in 1980 and is currently displayed at Summerlee Museum on the outskirts of the city.

Repositioned as a central focal point, the vessel reintroduces this historic artefact into the city and public realm.

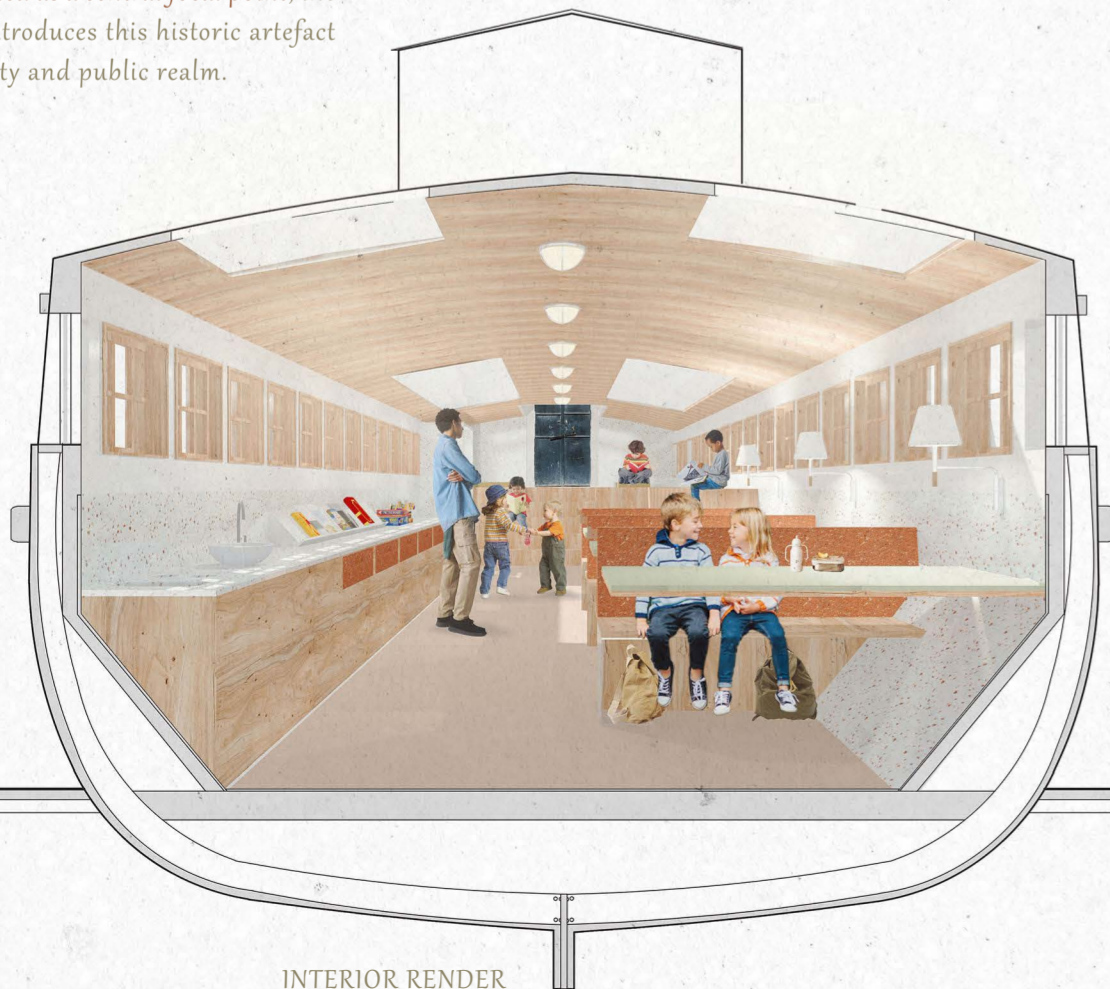


SECTION PLANS OF VULCAN



A NEW KIND OF CLASSROOM EXPERIENCE...

The interior will be transformed into a multi-use classroom and picnic space for visitors and local school groups, creating a learning environment that inspires young children and supports meaningful shared experiences. In this context, the Vulcan re-engages people with life on water and canal exploration.



INTERIOR RENDER





Stained birch, Forest Green.

Burnt orange Zellige tiles.

Vepa Hemp-Fizo Sage epoxy steel with Fidivi Jet 9703 cushion.

Kaavi green oxide flooring.

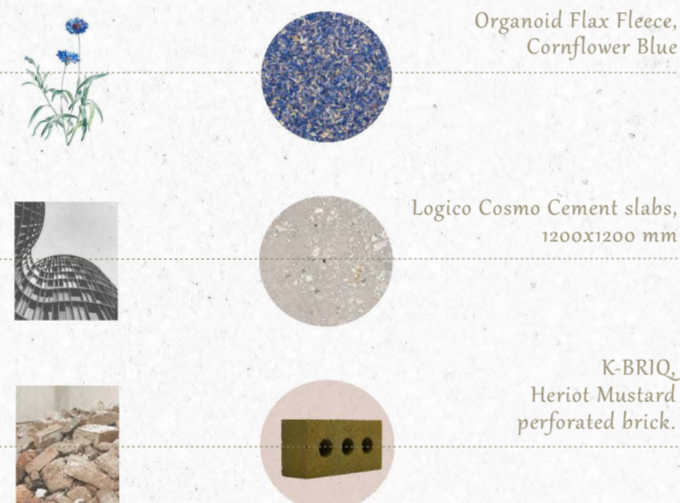
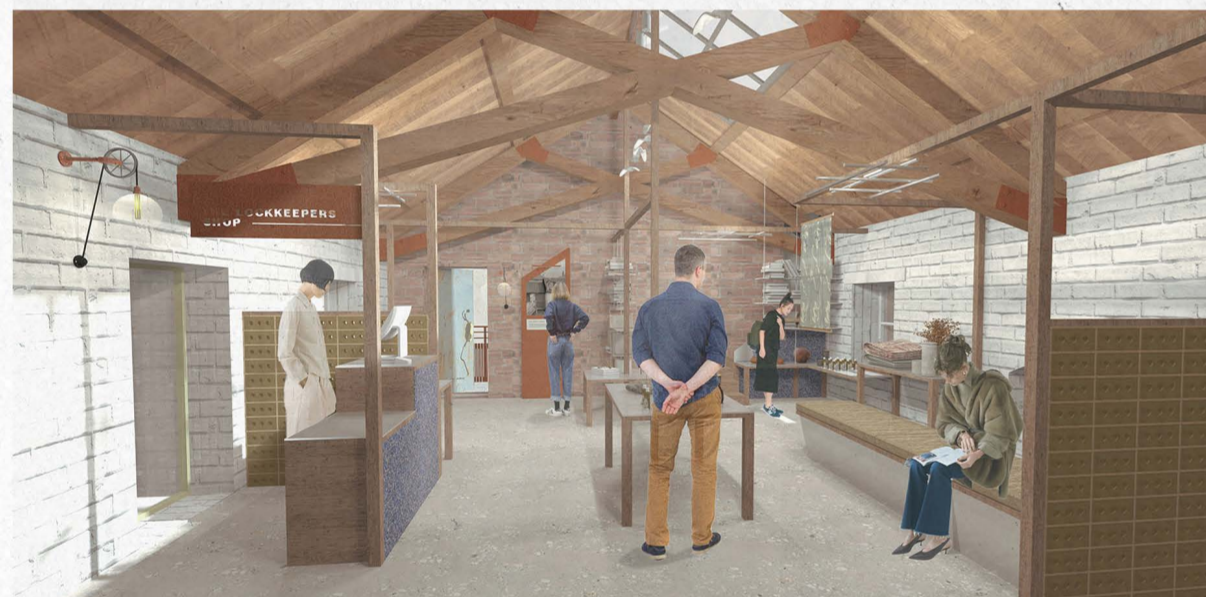
BOTANICAL FIELD GUIDE TABLE

This interactive installation promotes foraging as a way of connecting with the local landscape while preserving knowledge of native plants and traditional practices.



DISCOVERING ROOTS

Moving up into the first floor of the Smiddy the project shifts from Preservation to Regeneration. This level reflects the contemporary vision for the Forth & Clyde Canal as a place of ecology and community engagement.



Organoid Flax Fleece, Cornflower Blue

Logico Cosmo Cement slabs, 1200x1200 mm

K-BRIO, Heriot Mustard perforated brick.

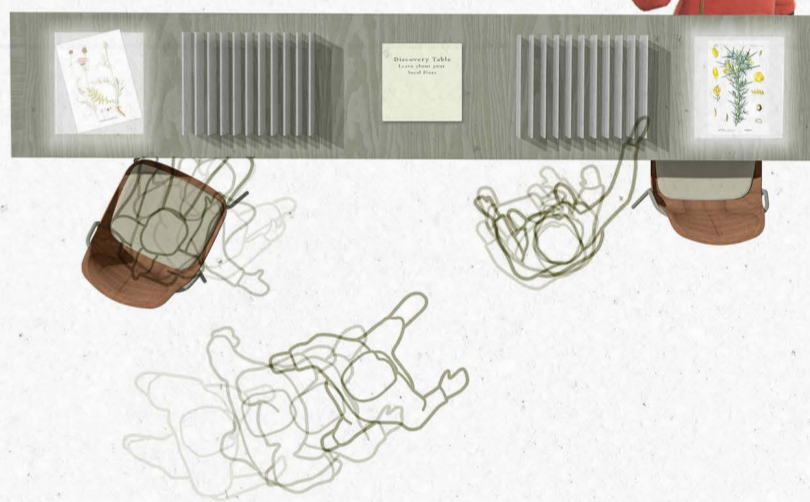
THE LOCKKEEPER'S SHOP

This is a curated retail space supporting local artisans, craft makers, and handmade goods, with a rotating stock that encourages ongoing engagement.

Visitors can also access a wrap-around balcony that overlooks the original south-east-facing clocktower, which will be restored to once again keep time for passing boats.

THE QUIET BANK

The Quiet Bank is a flexible public library space specialising in ecological and Scottish craft literature. As part of the Heritage Centre, it provides an accessible environment for reading, learning, and quiet occupation. Designed to adapt over time, the space responds to evolving needs while supporting open and inclusive public use.

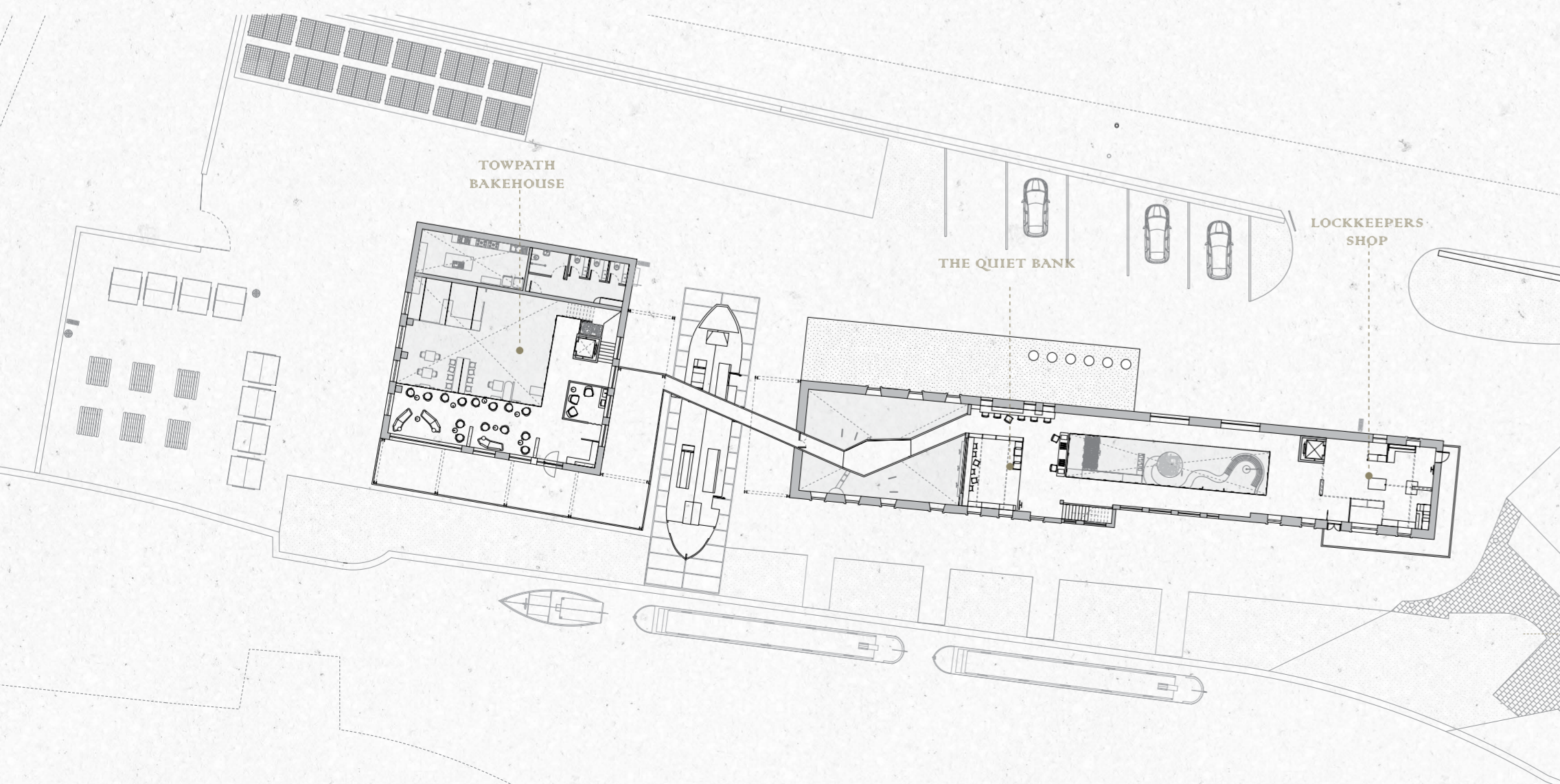


TOWPATH BAKEHOUSE

Offering locally sourced fresh food and artisan coffee, the bakehouse helps weave the centre into people's everyday routines.



Rendered section of the Towpath Bakehouse showing main entrance point and mezzanine access.



CLYDE SLABS



Explored the surrounding canalside areas.

Foraged for different plant samples and interesting sediment.

Cast different found matter into resincrete solution



Created 'CLYDE SLABS'

A unique wall finish that encapsulates the essence of the Scottish canalside.



Sample wall finish.