

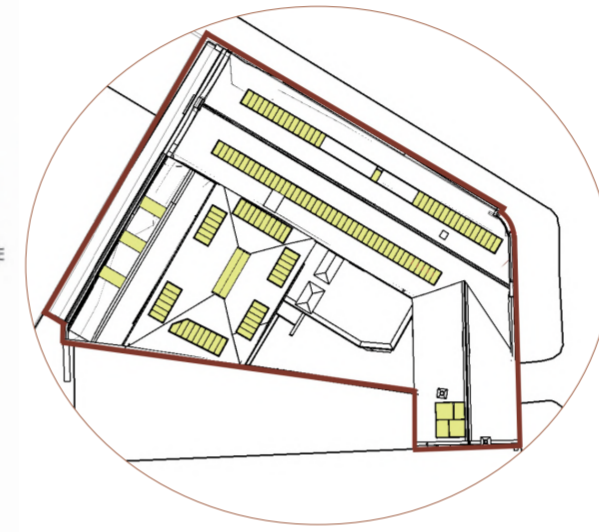
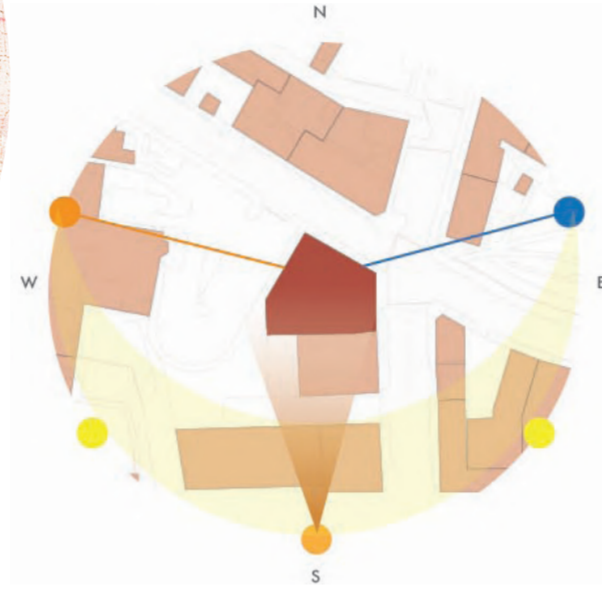
ELLIOT WORKS

ARTIST RESIDENCY + COMMUNITY ART CENTRE

The project responds to a gap in provision for accessible live/work artist residencies in Glasgow by creating a creative hub that integrates artistic practice into everyday life. The design provides light-filled studios and live/work accommodation for resident artists, alongside a public ground floor dedicated to visual arts, printmaking and creative workshops. The proposal establishes a gradual transition from public to private, allowing artistic production to remain visible and accessible without compromising the needs of resident artists. By connecting professional practice with the wider community, the building becomes a platform for learning, making and cultural exchange, offering a unique model for artistic engagement in Glasgow.

SITE: COOK AND SONS

24 Elliot Street / 93 Houldsworth Street, G3 8DZ



North-facing light informs the placement of artist studios and public workshops, ensuring consistent, even daylight suitable for creative practice.

DESIGN APPROACH

The project retains the existing character, structure and material identity of the former metalworks, including original brickwork, steel columns, beams and arched openings, reducing environmental impact while preserving its industrial heritage. Existing brick is reinterpreted through perforated design that enhance daylight, transparency and visual connectivity, while interventions such as the loft studios or covered courtyard improve spatial performance and year-round usability. Material selections, including brick, clay renders, timber, plywood, steel, glass and acoustic treatments, prioritise longevity, user comfort and environmental responsibility, creating a flexible, transparent and welcoming environment for artists and the wider community.



ARTIST IN RESIDENCE	Create	Live	Share	Exhibit
STUDENT	Learn	Experiment	Collaborate	
LOCAL WORKER	Connect	Participate	Network	
LOCAL RESIDENT	Explore	Engage	Belong	
SHARED	CREATIVE	COMMUNITY	CONTEXT	

COMMUNITY

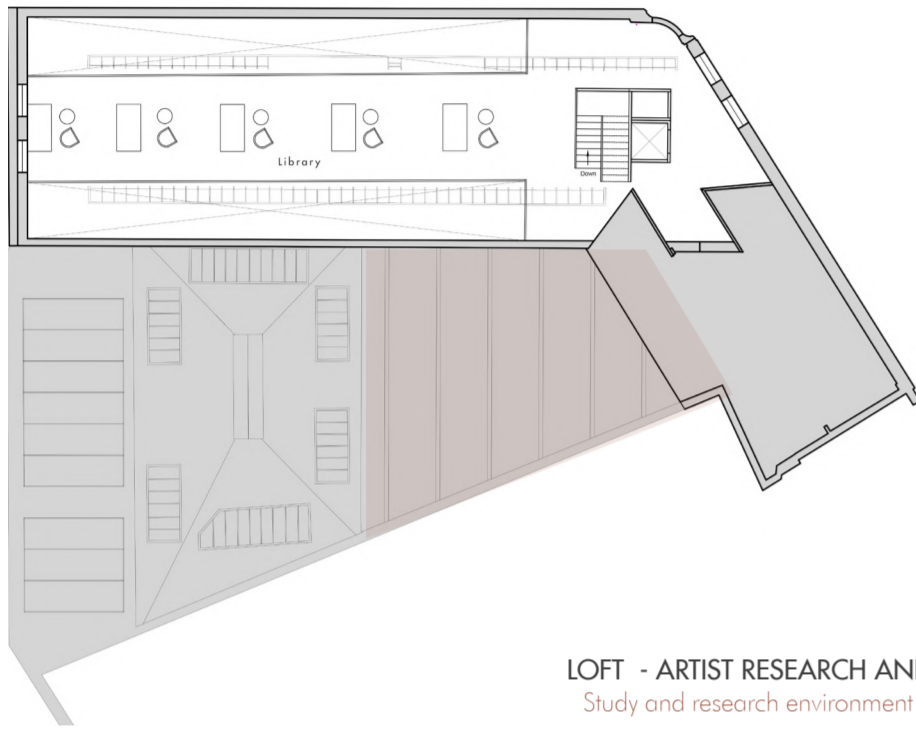
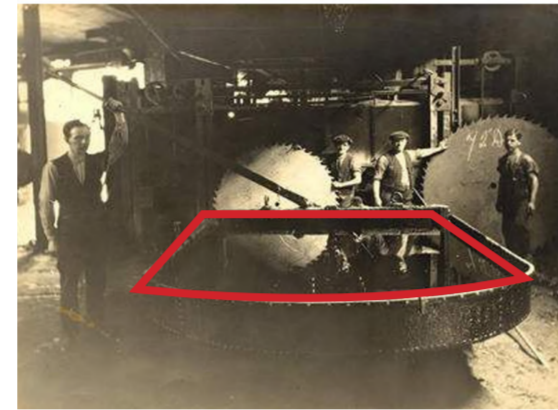


EXISTING SITE CONDITION

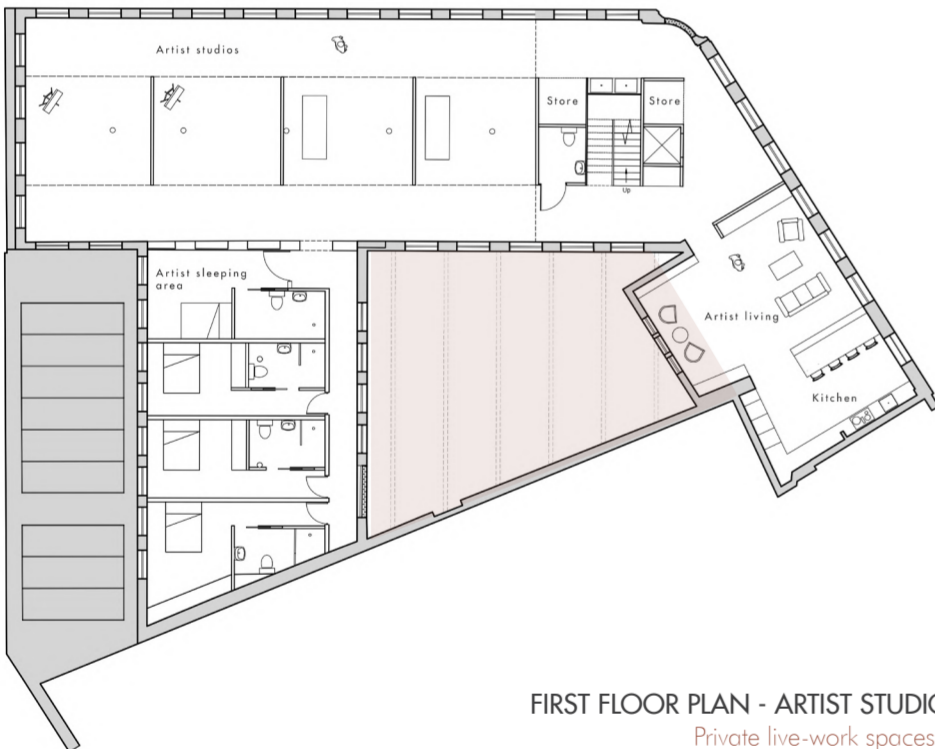


BUILDING STRATEGY

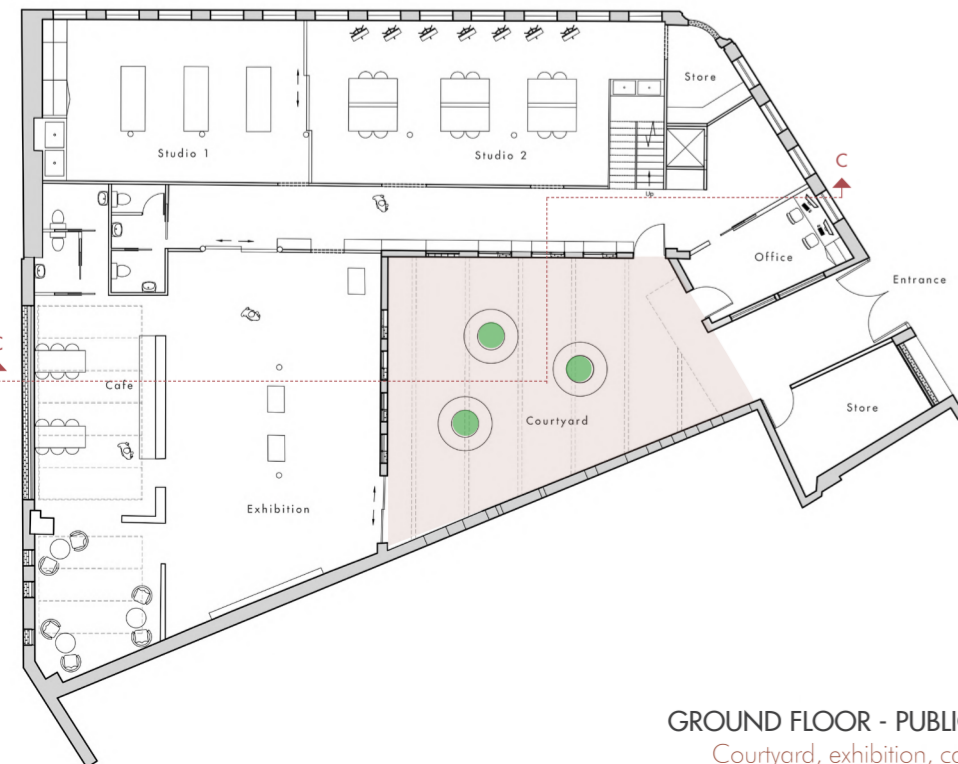
The building is organised around a covered central courtyard, the social heart of the project, where the public and artists meet, encouraging visibility and interaction. Industrial artefacts from the former metalworks are reinterpreted within the space as sculptures, and shapes inspired by the machinery are applied to the round seating. Corten steel benches and a black steel roof structure reference the site's industrial past, supporting suspended contemporary artworks that bridge the past with its new use. The courtyard roof intervention responds to Glasgow's climate, creating a year-round communal space



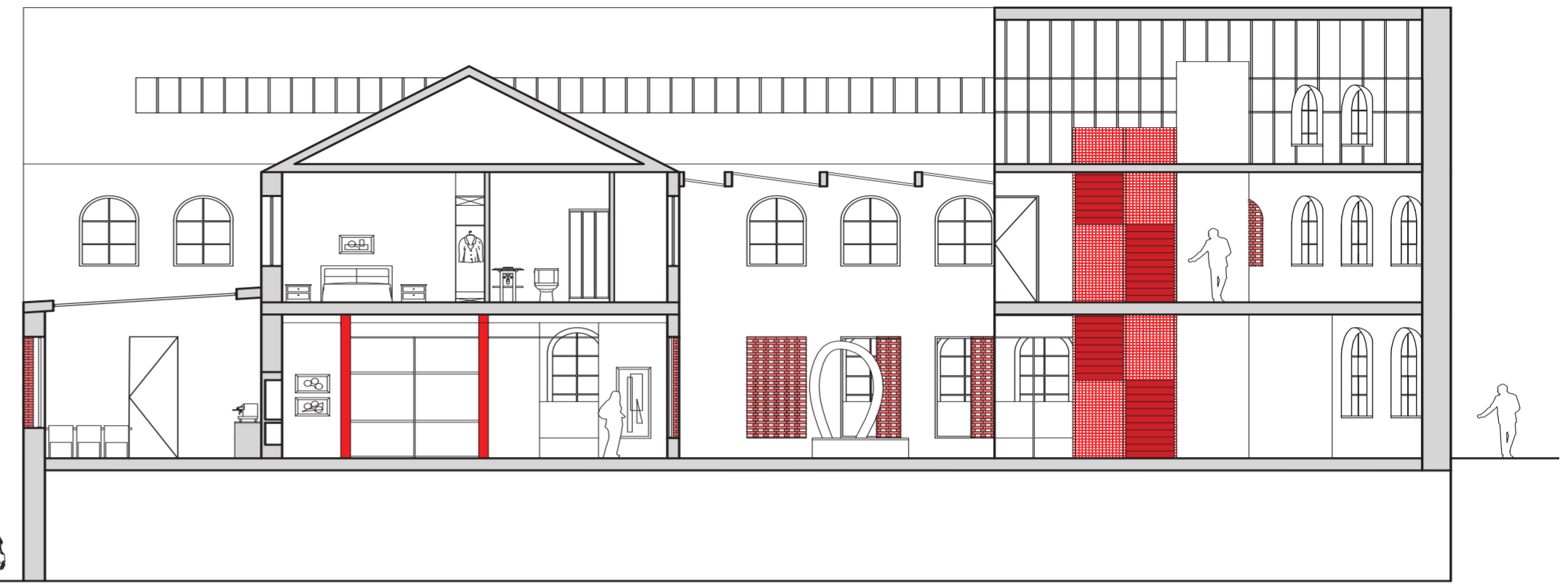
LOFT - ARTIST RESEARCH AND LIBRARY SPACE
Study and research environment supporting practice



FIRST FLOOR PLAN - ARTIST STUDIOS AND LIVING
Private live-work spaces for resident artists



GROUND FLOOR - PUBLIC PROGRAMME
Courtyard, exhibition, cafe and workshops



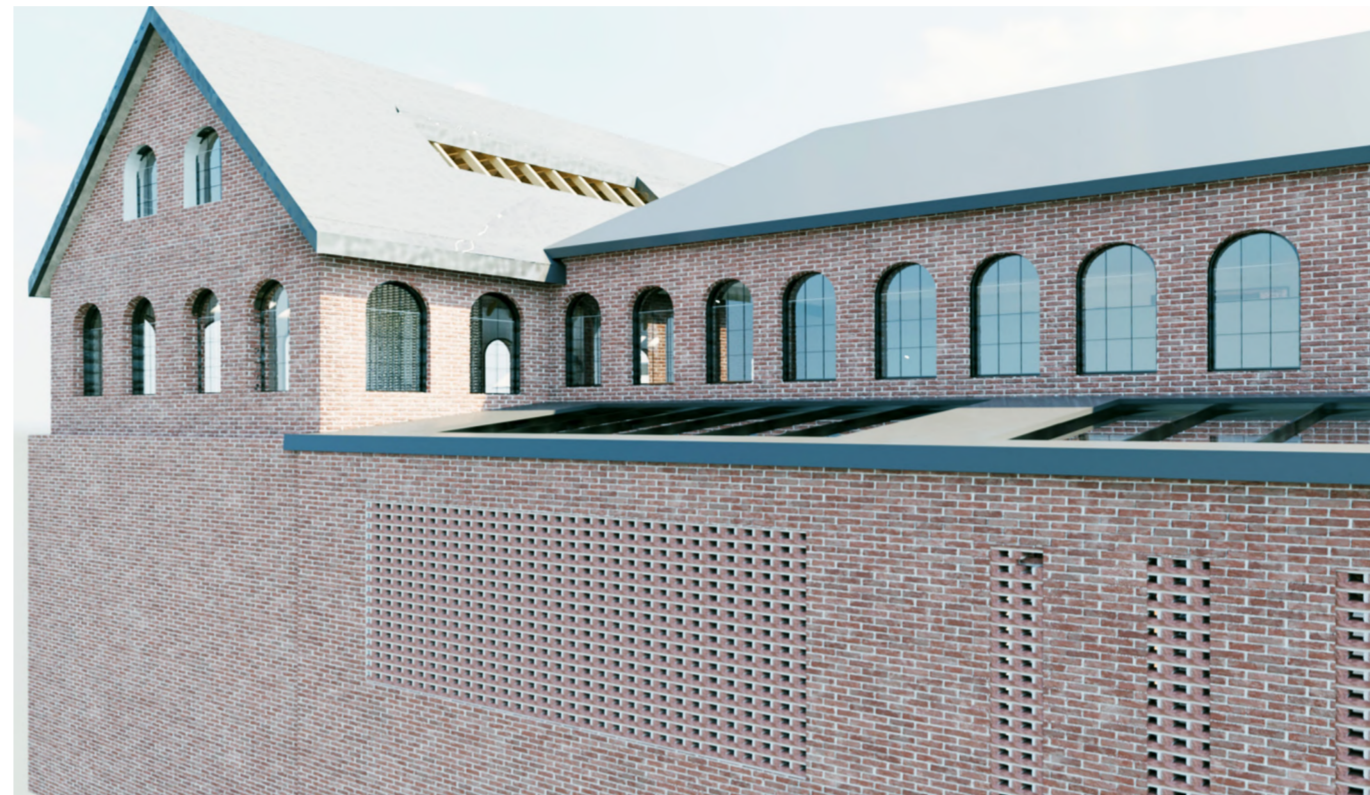
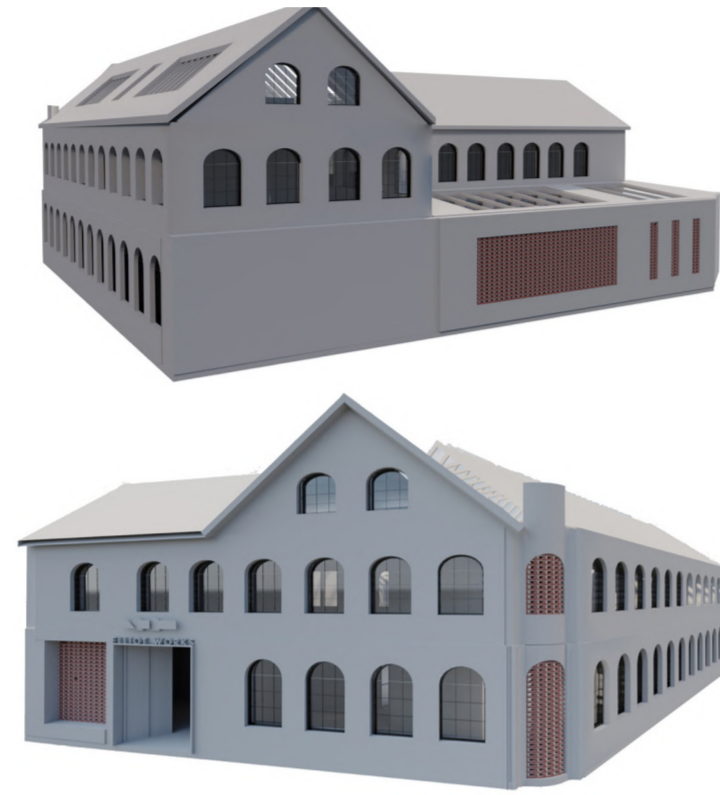
SECTION C-C

Public spaces, courtyard connection, and private artist areas above, with vertical circulation through the building. New roof interventions above the cafe and courtyard.





The existing brick fabric informed the development of a contemporary perforated brick pattern applied across key areas of the facade. Reusing the site's material language preserves its industrial identity while increasing transparency, daylight penetration and visual connections between the building and the street. The previously solid rear facade is opened through, increasing daylight penetration into the cafe and exhibition spaces. The intervention creates a more welcoming public presence. During the day, the brick screen filters light and frames views, while at night it transforms the facade into a lantern-like element, revealing activity within the building.



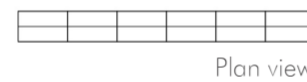
EXISTING



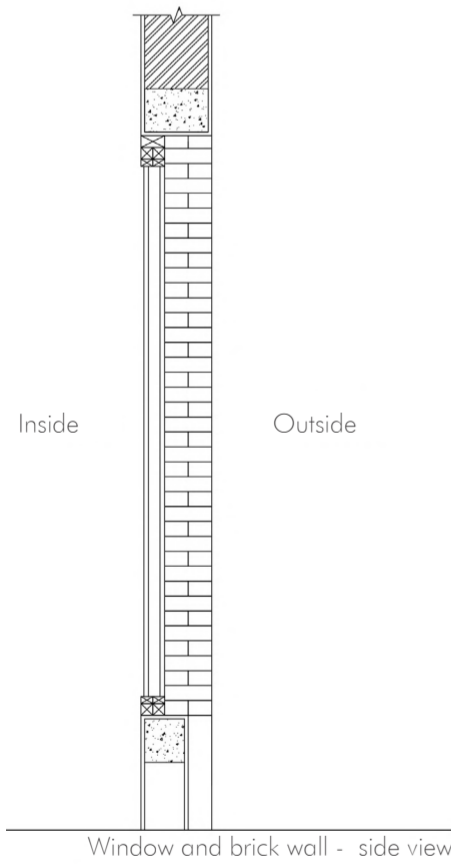
DETAIL



Reclaimed brick



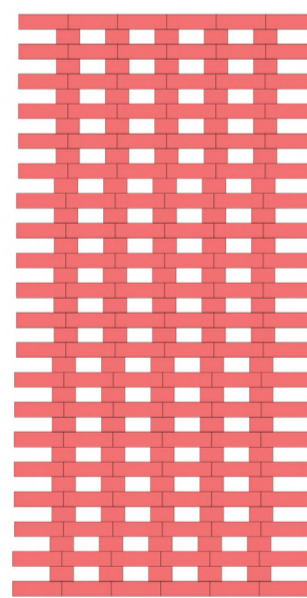
Plan view



Inside

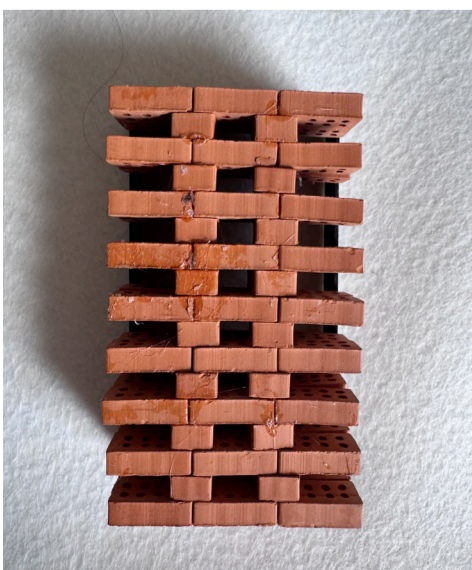
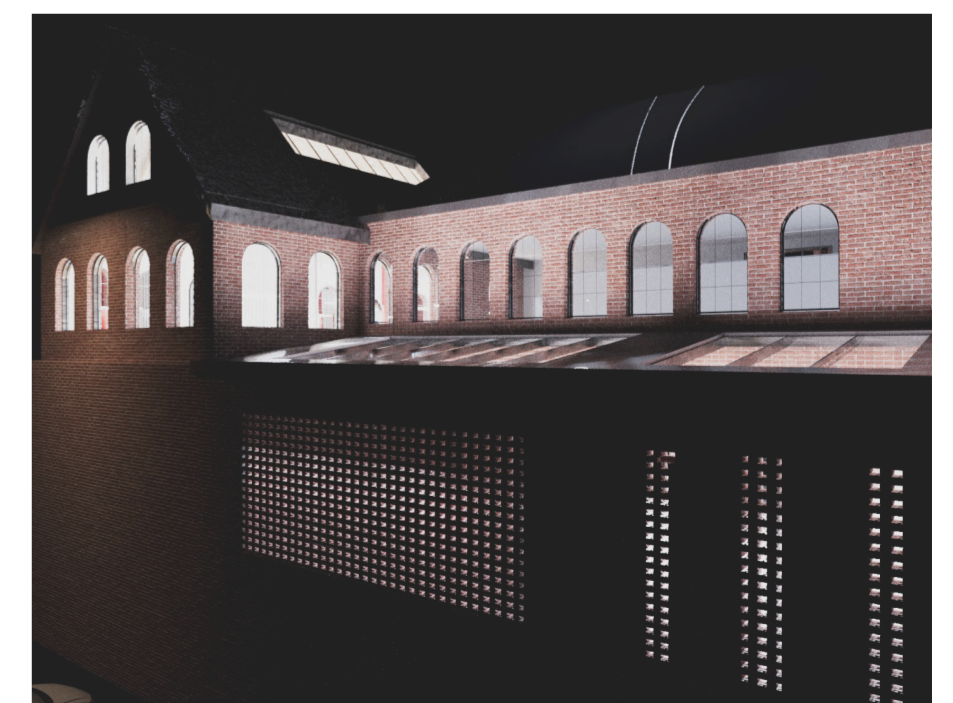
Outside

Window and brick wall - side view



Brick pattern

ATMOSPHERE



LOFT INTERVENTION

The loft is opened to the floor below creating a suspended mezzanine, preserving the character of the roof space while allowing daylight from the skylights to filter through. This creates double-height artist studios with improved spatial quality and natural light.

Cropped sections illustrating the first floor and loft intervention looking towards the front and back of the building.

Visuals representing atmosphere in the library space under the pitched roof, celebrating existing architecture and allowing light to filter into the studios below. Visual of the artist studio highlighting the mezzanine, visual connection across levels and glass brick partitions separating working areas.

MATERIALS



Glass brick

Reinterprets the building's brick character in a lighter material, offering privacy, visual connection and diffuse daylight while softly blurring views between studio spaces.



Wood wool

Used within the double-height loft space to improve acoustic comfort while softening the exposed roof structure.



Clay render

Breathable finish that softens the industrial interior while improving light reflection, acoustic comfort and environmental performance



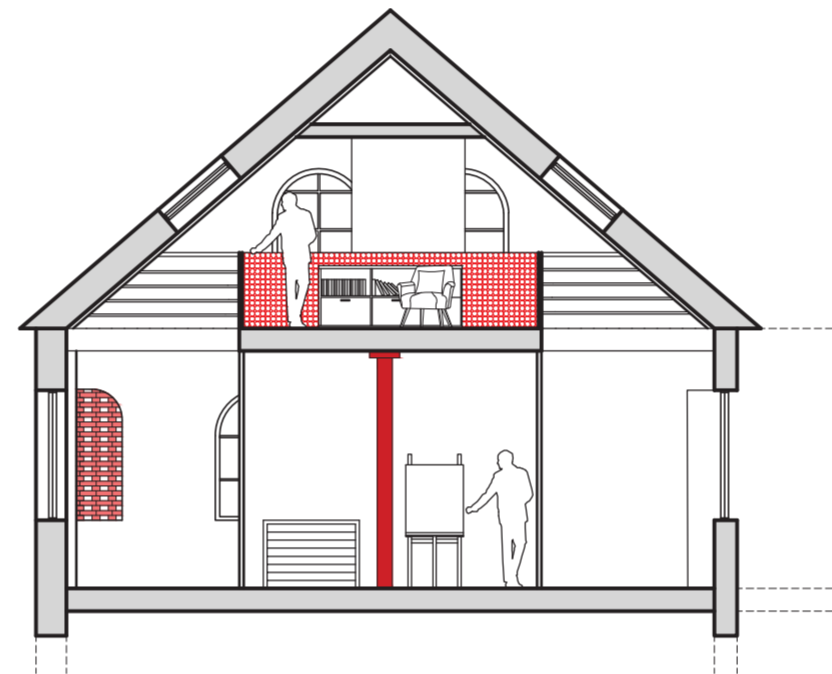
Recalimed oak flooring

Introduces warmth and comfort to balance the industrial material palette, supporting a softer atmosphere within working spaces.

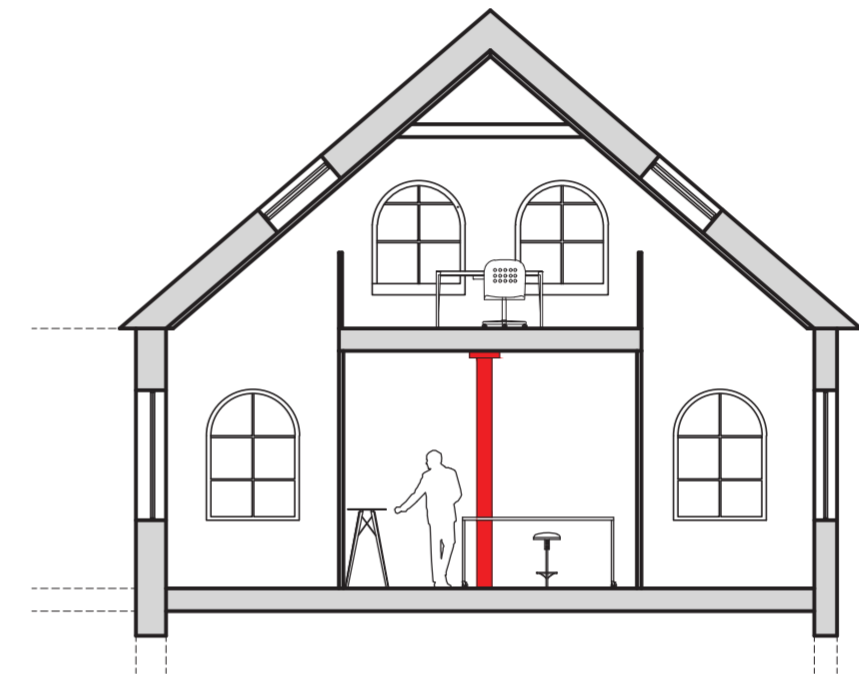
EXISTING



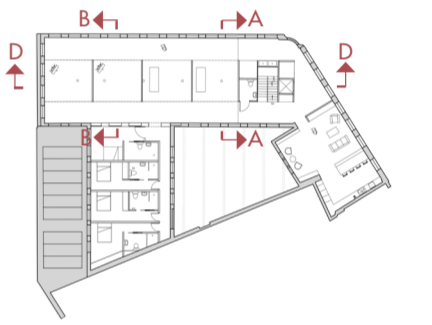
SECTION D-D



SECTION B-B



SECTION A-A



The ground floor is designed as a series of flexible and adaptable spaces, allowing exhibitions, workshops and community events. Sliding partitions and glazed screens provide a balance between openness, transparency and privacy, encouraging visual connections while supporting different activities. Custom-designed storage and partition systems improve functionality and flexibility, while retained brick walls, steel columns and existing structural elements celebrate the building's industrial heritage. Introduce warmth and comfort, creating welcoming environments that support interaction between artists, visitors and the wider community.

EXISTING



MATERIALS



Terrazzo flooring
Selected for durability and long-term performance in high-traffic public areas floor



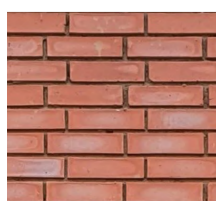
Birch Plywood
Used on custom made panels and storage, introduces warmth and comfort.



Perforated Steel
Used on the stair enclosure to maintain visual connectivity and reference the building's industrial heritage, reflecting the colour of the existing steel columns.



Reeded glass
Used on dividing panels to create an open and welcome feel and transparency between spaces



Existing brick
Durable and hard-wearing, selected for high-traffic public spaces and long-term performance.



Exhibition with cafe area behind

STORAGE DETAIL



Custom made storage furniture around courtyard windows



Stair case and corridor towards exhibition and public workshop areas



Cafe



Exhibition towards workshop spaces