

Can overlooked infrastructure become an interior?

"I understand the interior as something imagined, but I also believe it must be lived, used, and experienced."



Citizens Art Quarter questions how interiors can be imagined beyond conventional buildings. While inspired by Charles Rice's idea of the interior as both a space to inhabit and an image to contemplate, the project explores how imagination and practicality can coexist. By transforming Glasgow's disused railway arches into a creative interior, it challenges expectations of where artistic practice belongs and encourages new ways of seeing overlooked infrastructure. Through moments of visibility, discovery, and participation, visitors actively construct their understanding of the site. I strived to create an interior that would invite collaboration and evolve through creative occupation.

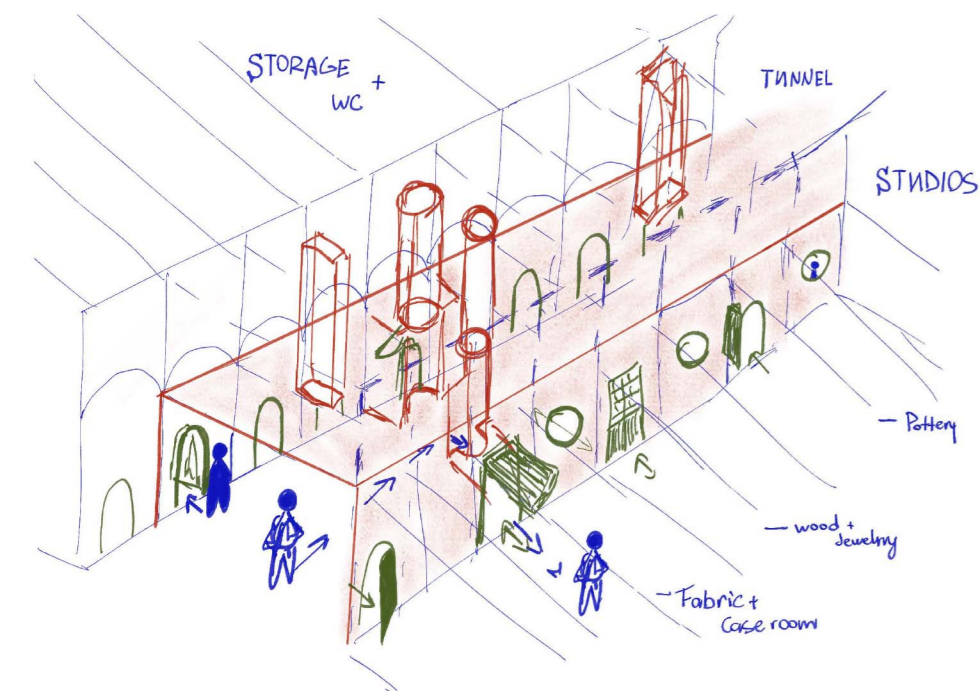


WELCOME TO THE 'CITIZENS ART QUARTER'



Why do creative spaces matter?

As creative sites across Glasgow continue to disappear, opportunities for making, learning, and cultural exchange are becoming increasingly limited. This project responds by exploring how overlooked infrastructure can be reimagined as a new type of creative interior, challenging conventional assumptions about where artistic practice can take place.



The project frames the interior as a system of actions rather than fixed identities. By encouraging curiosity and exploration through shifting, multifunctional spaces; the user experience is shaped by engagement, movement, and discovery rather than predetermined use. I wanted the space to feel curious and slightly unfamiliar, allowing people to explore through different activities. This can reveal how the user's experience can be impacted by the interior.

Human lens

Users are defined through roles rather than identity, such as "the assembler" in the woodworking studio, presented without fixed facial identity to emphasise ambiguity.

USERS of the 'CITIZENS ART QUARTER'



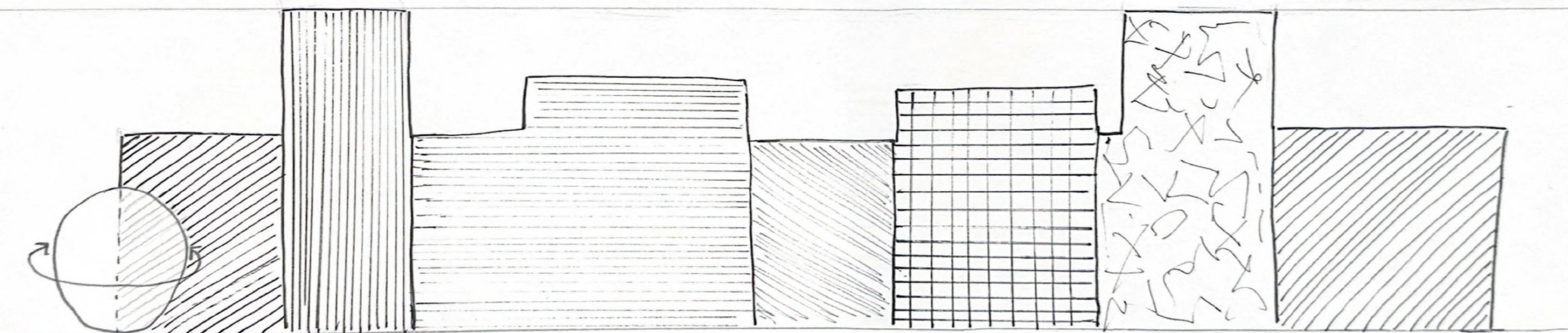
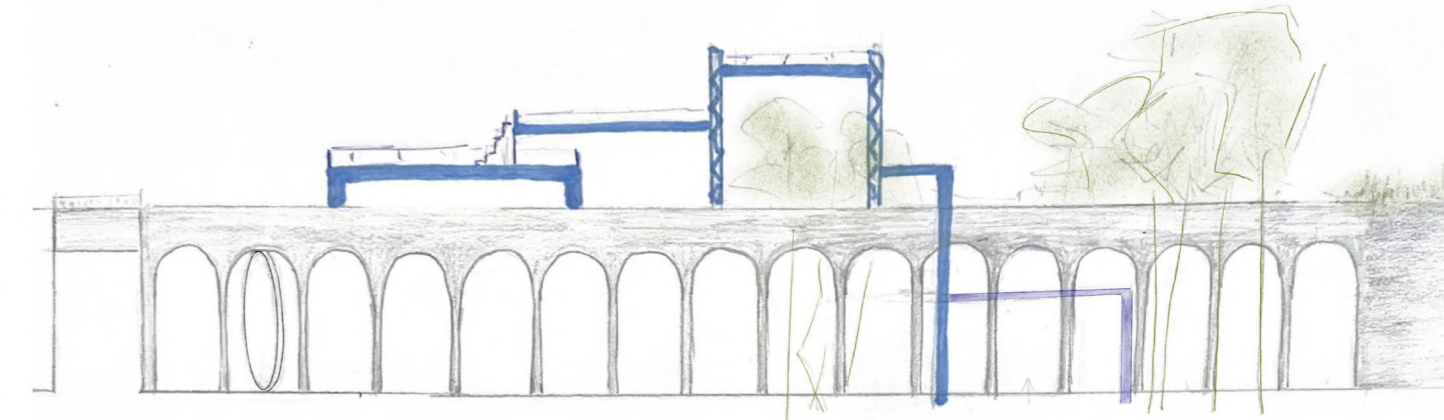
IMAGINING THE TUNNEL

Shifts in light, material, and atmosphere define the experience, guiding movement through a more intimate and enclosed environment. Integrated rest booths are embedded within the walls, offering respite along the way.

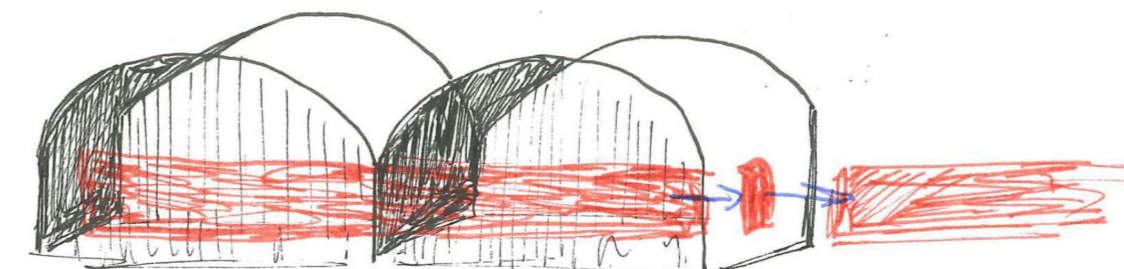


THE WALK ABOVE

Accessed via a spiral staircase on Cleland Street or a lift from Lauriston Road, the platform reinterprets the disused railway infrastructure, forming an elevated journey through the site. It unfolds as a sequence of framed views, revealing the arches and surrounding landscape through shifting perceptions.



Circulation flow in the tunnel within the arches.



The work of Do Ho Suh informed the conceptual approach to the internal tunnel. Through shifts in scale, colour, transparency, and texture, his installations transform movement into an act of discovery. This encourages visitors to engage with space through both visual and tactile perception.

This inspired the tunnel as a playful sequence of changing material conditions, where texture, light, and transparency shape how the interior is experienced and interpreted.

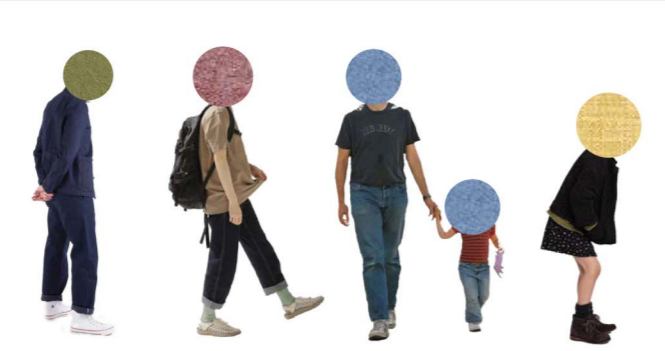
WELCOME TO THE 'TRANSITION SPACE'

The internal tunnel acts as the project's spatial spine, connecting each studio through a continuous journey of interpretation and discovery. It creates a sequence of views and thresholds that frame the creative processes within while maintaining a sense of anticipation.

Layers of transparency, from glass and polycarbonate to open transitions, encourage curiosity and provide partial views into the studios, while subtle material shifts define zones and maintain a fluid, interconnected reading of the site.

MATERIAL ENCOUNTERS

	Sawdust panel - mixture of finely sieved wood chalk and natural latex derived from the rubber tree.			Arakabe Japanese clay plaster finish. Color - WHI-03 Supplier: Clayworks
	Rammed Earth. Supplier: Clayworks.			Repurposed clay leftovers into terrazzo pieces. Mycelium board for acoustic



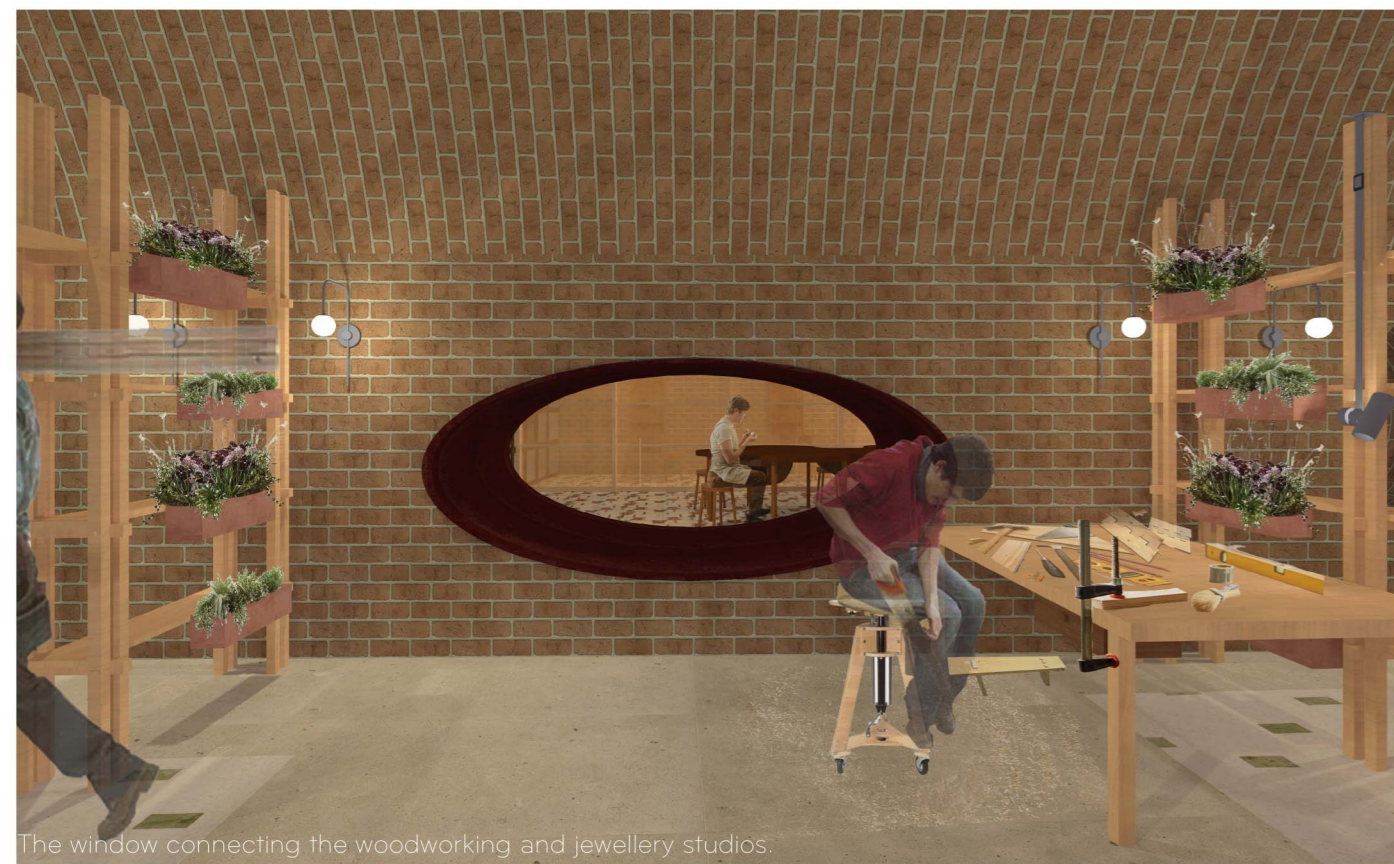
Material choices encourage a tactile and sensory engagement with the interior.



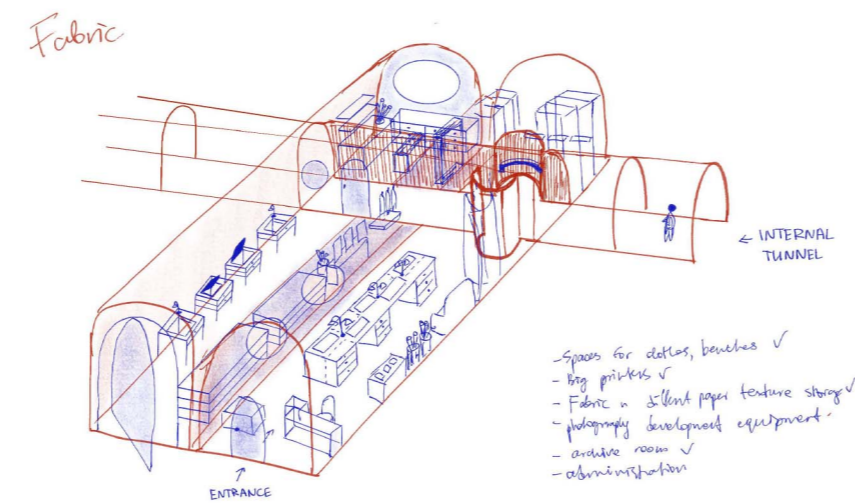
Views within the tunnel.



The link between the shop and café.

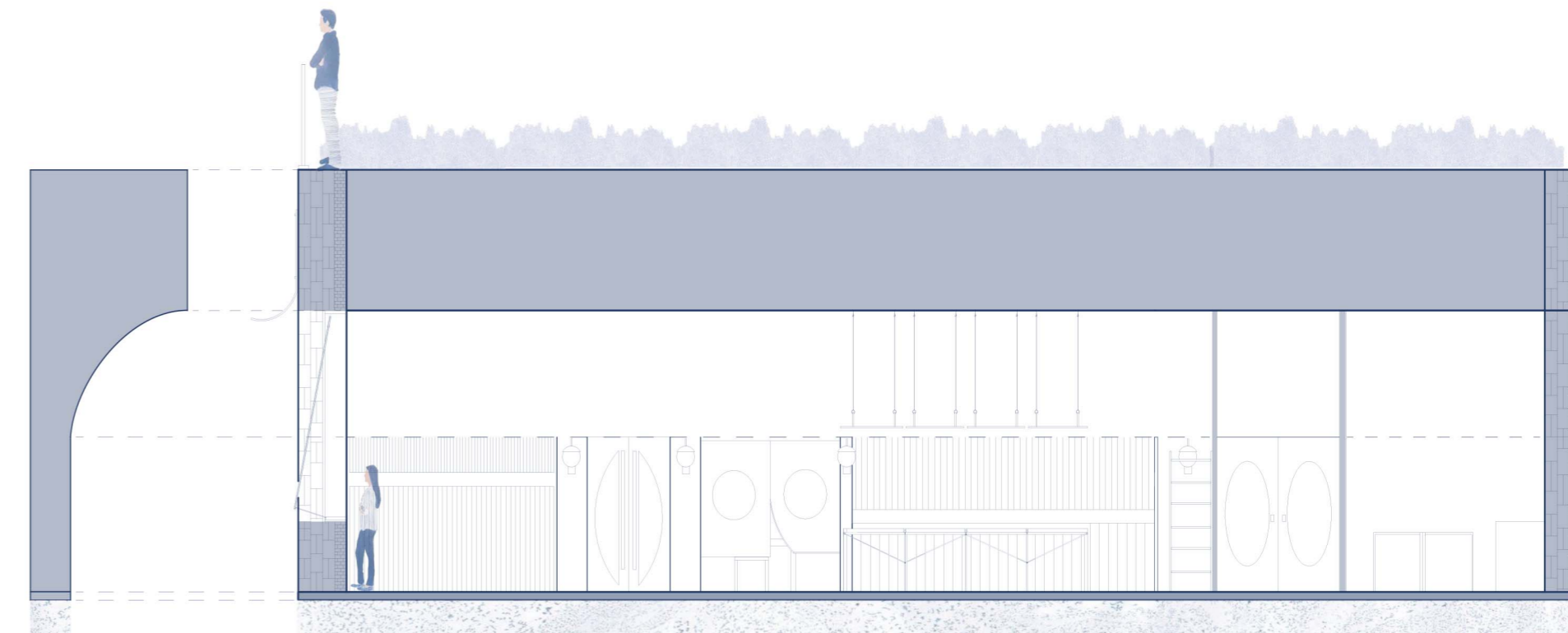
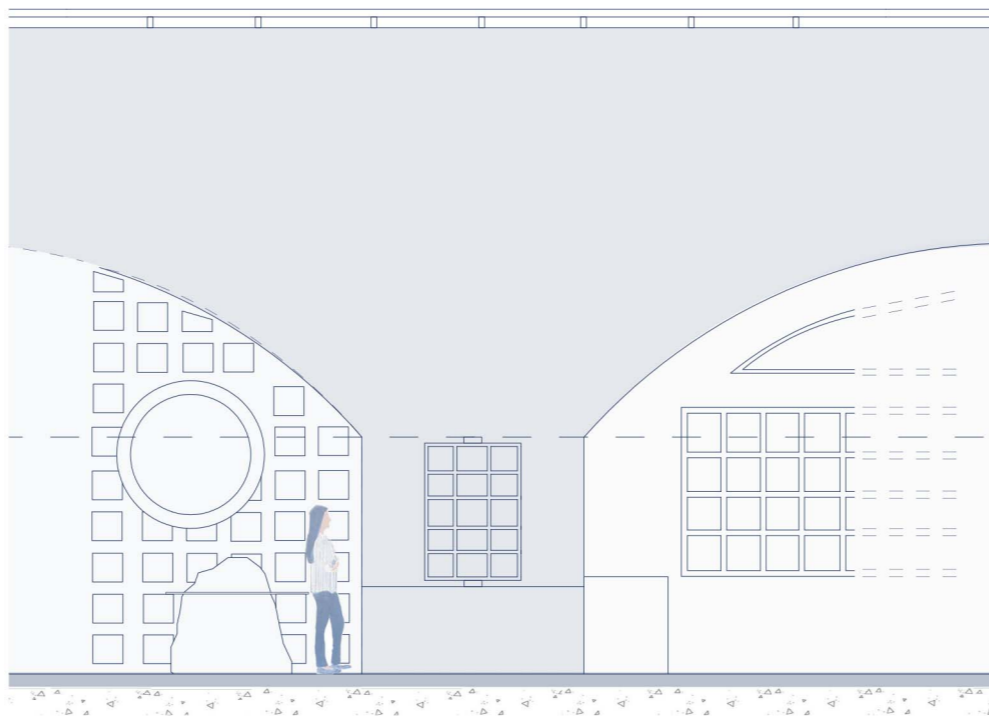


The window connecting the woodworking and jewellery studios.



INTERLINKED

Layered transparency and partial views shape how spaces are perceived. Openings between studios, including the link between the shop and café, the window connecting the woodworking and jewellery studios, and the opening into the print studio, establish visual connections, allowing perceptions to flow across the site while maintaining a subtle sense of separation.



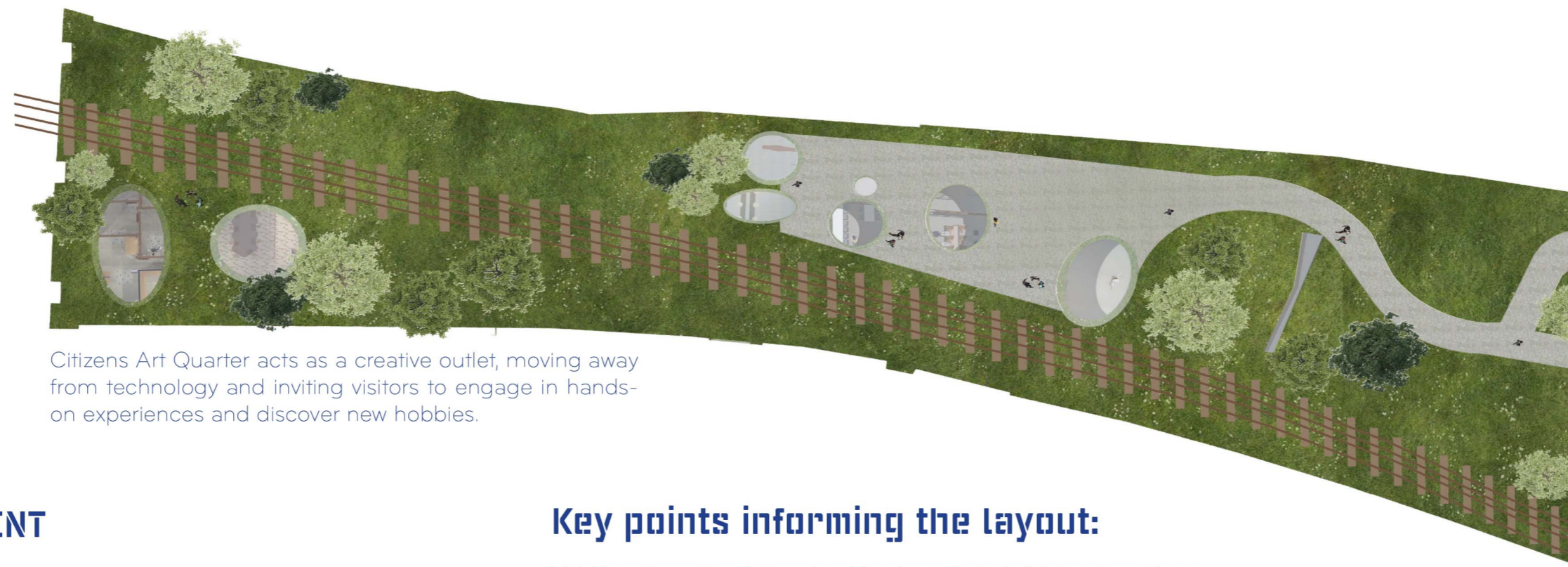
The opening into the print studio.

Scale: 1:200

From Outside To Inside

Citizens Art Quarter reimagines shopfronts as a threshold between street and studio, extending the interior beyond its physical boundaries. Each studio is expressed through a distinct façade, with window and door compositions responding to the activities within. Inspired by European cultural quarters, the shopfronts act as mediating surfaces between occupation and representation.

The façades offer partial views into creative practice, allowing the interior to be imagined before it is entered.



Citizens Art Quarter acts as a creative outlet, moving away from technology and inviting visitors to engage in hands-on experiences and discover new hobbies.

The disused railway line is reimagined as an elevated landscape that reactivates an overlooked piece of infrastructure. Combining planting, movement, and moments of pause, the walkway creates opportunities for exploration and connection while reintroducing greenery to the site. It establishes a slower, more restorative way of moving through and experiencing the spaces below. Open to all ages, it offers a new way to engage with the neighbourhood and its creative context.



SPATIAL ARRANGEMENT

ARCH 1	WOODWORKING STUDIO	ARCH 6	CAFE	①	STORAGE UNITS
ARCH 2	JEWELLERY STUDIO	ARCH 7	POTTERY STUDIO	②	INTERNAL TUNNEL
ARCHES 3/4	PRINT STUDIO	ARCH 8	CERAMIC STUDIO	③	WC
ARCH 5	SHOP	ARCHES 9/10/11	DANCE STUDIO		

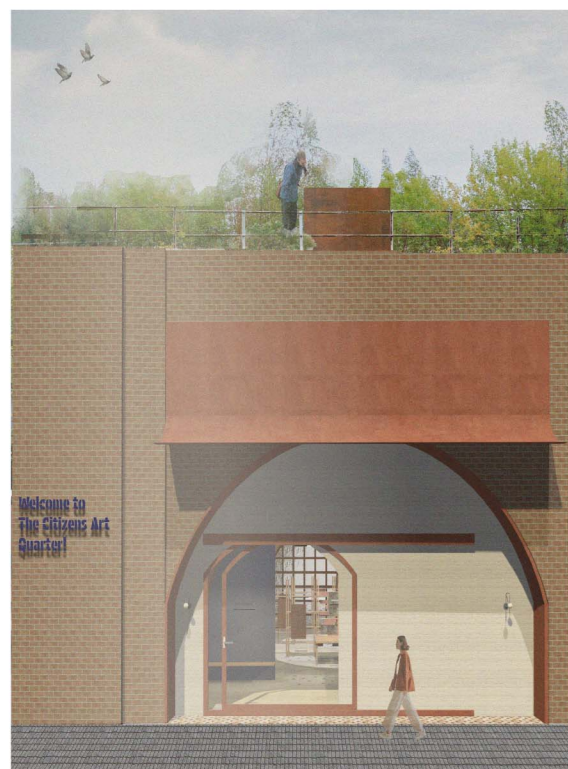
Key points informing the layout:

- Void locations are determined by the railway infrastructure above.
- Studios are organised according to the scale and spatial qualities of each arch.
- Positioned at the centre of the site, the café and shop form a communal hub that connects the studios, encourages interaction, and acts as a point of orientation within the wider spatial sequence.



'THE VOIDS'

The project positions light as something to be experienced through movement, rather than simply illuminating space. Voids draw daylight deep into the arches, transforming the atmosphere below and creating points of connection from above. Their scale varies in response to the spatial needs of each studio and the railway structure above.





WOODWORKING STUDIO

A place where raw timber is translated into bespoke furniture and crafted forms through precision, skill, and experimentation.

Designed around practicality and multifunctionality, the studio balances individual focus with a connected environment that supports both focused and collective modes of making.



ARCH - 1



CAFE

The café operates as a threshold between the site and the city, inviting pause and engagement with the activity of the arches. As the only arch without the internal tunnel wall, it opens fully to connect Cleland Lane and Lauriston Road.

It forms a visual and physical link between neighbourhoods, creating a space for rest and everyday interaction.



ARCH - 6



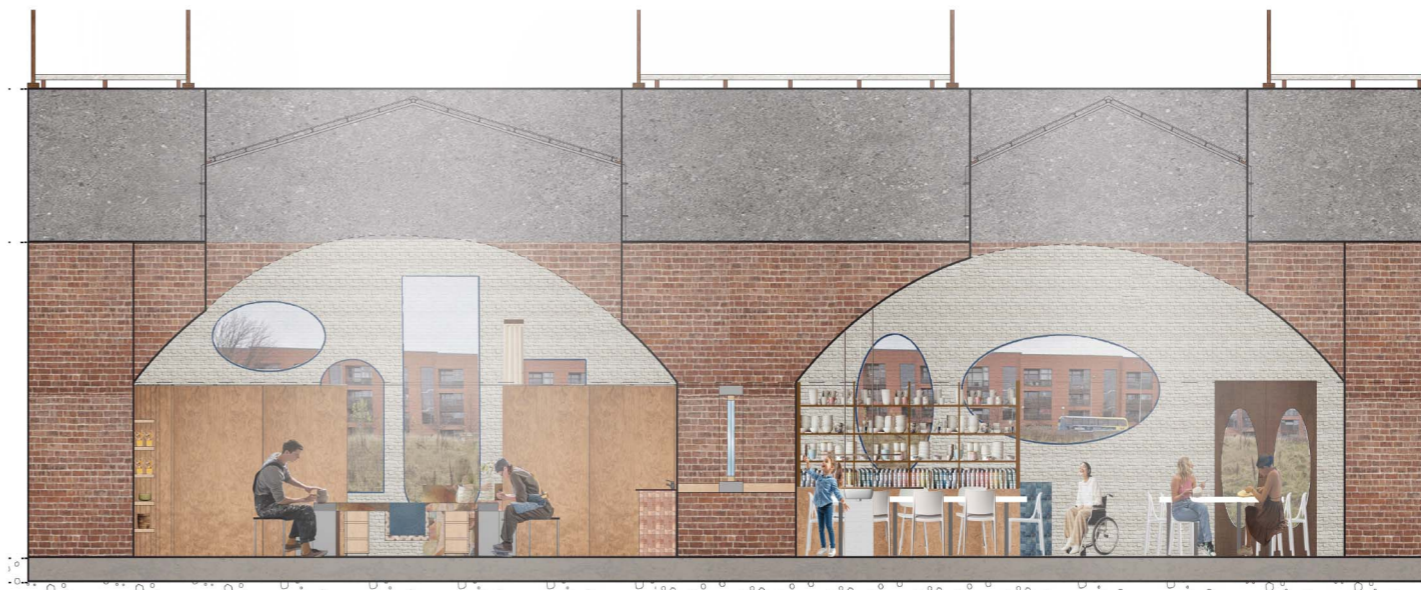
JEWELLERY STUDIO

A space dedicated to handcrafted metalwork, where jewellery is formed from recycled and repurposed materials. Reclaimed finishes and compressed wood-chip partitions reflect a material ethos of reuse and adaptation.

Soft tones and filtered daylight create a calibrated atmosphere, while carefully positioned voids draw light deep into the studio, enriching both the craft and the experience of the interior.



ARCH - 2



POTTERY STUDIO

These two arches combine ceramic making and pottery painting, creating two connected but distinct spaces linked by internal windows.



ARCH - 7



PRINT STUDIO

A space of pattern, colour, and process, where digital designs are translated into large-scale fabric prints through digital and screen-printing techniques.

An open layout and suspended drying systems support the flow of production, creating a flexible and efficient working environment.



ARCHES - 3/4



CERAMIC STUDIO

Exposed brick combines with timber dividers and storage, with subtle tonal accents introducing variation. A movable partition allows the ceramics room to shift between private classes and open workshops.



ARCH - 8



SHOP

Bringing together the outputs of each studio, the shop presents handmade jewellery, ceramics, printed works, and bespoke furniture, offering visitors insight into the material outcomes of the arches.

Positioned at the heart of the site, it creates a point of pause within the journey. A reclaimed brick divider maintains visual connections to the surrounding studios, preserving continuity throughout the space.



ARCH - 5



DANCE STUDIO

Spanning the largest arches, this space accommodates movement across studios of varying scales for individual and group practice, with spaces of respite between sessions. Defined by light and voids that enhance movement, it supports a fluid spatial experience.

Working in collaboration with the Citizens Theatre, the studios extend into additional rehearsal and performance spaces.



Arches 9/10/11

Citizens Art Quarter is a project that breaks boundaries between the imagined interior and explores the possibilities of inhabiting forgotten spaces.