

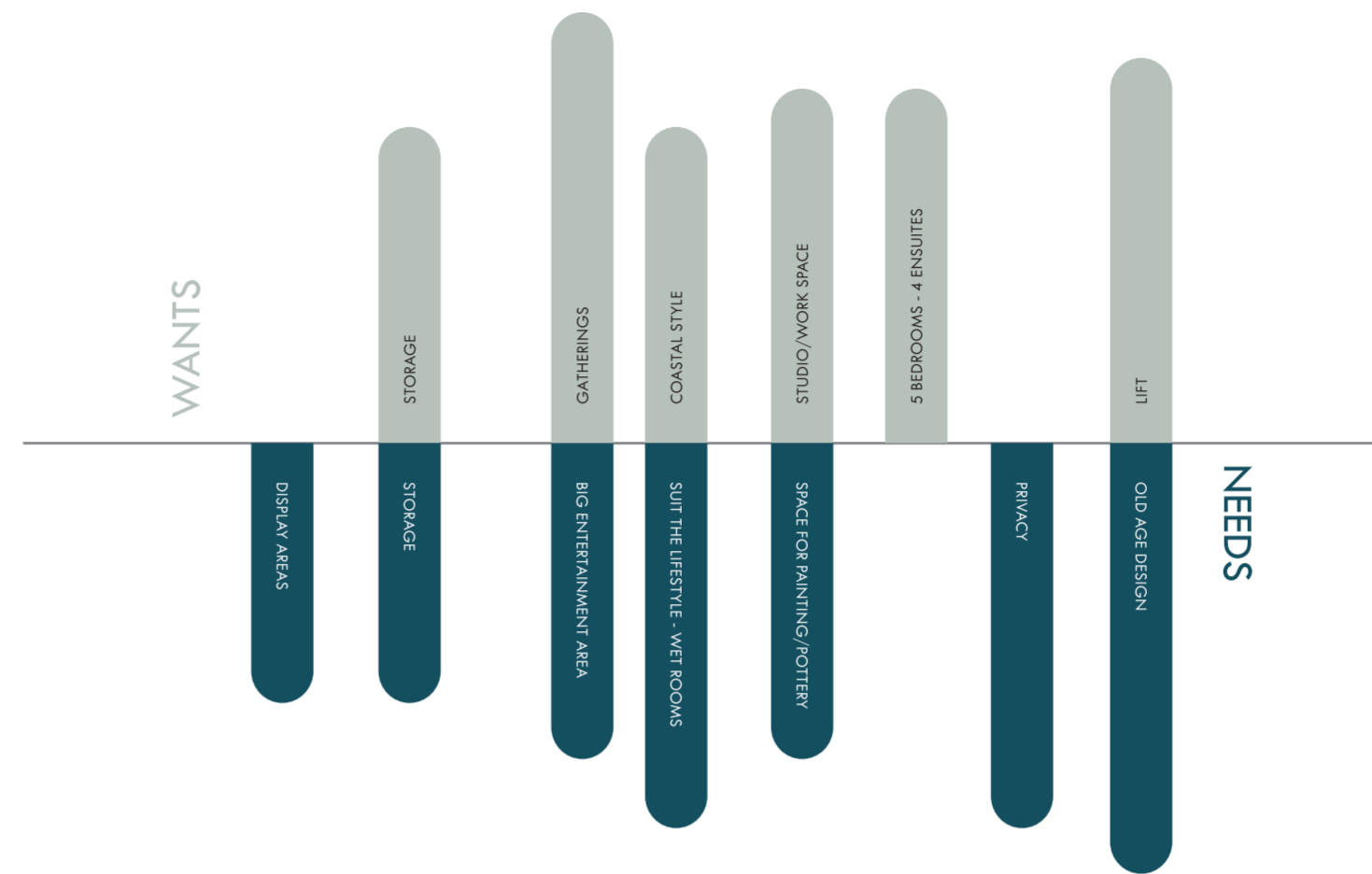
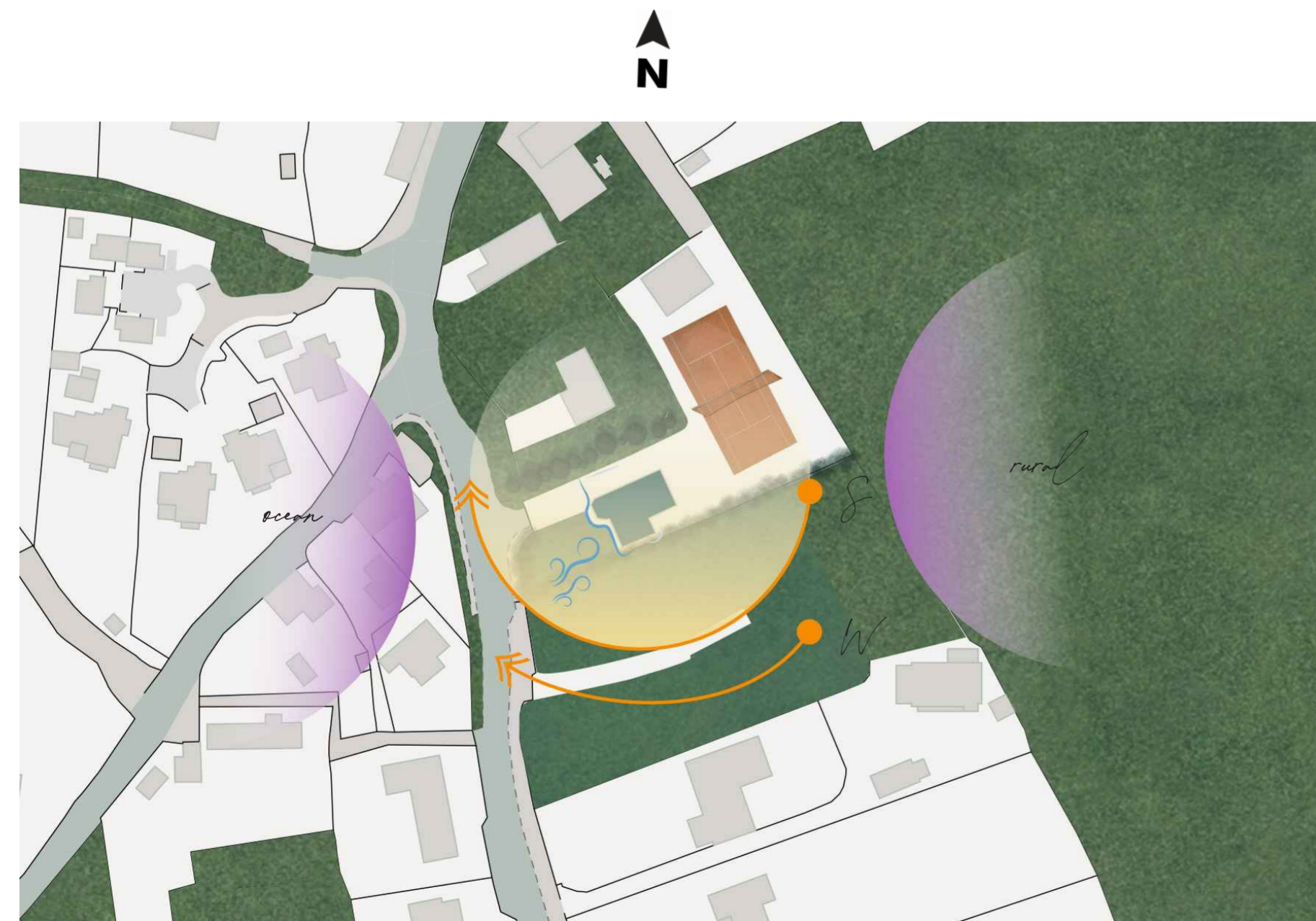
TROYLS

(Traditional Seasonal Gathering)

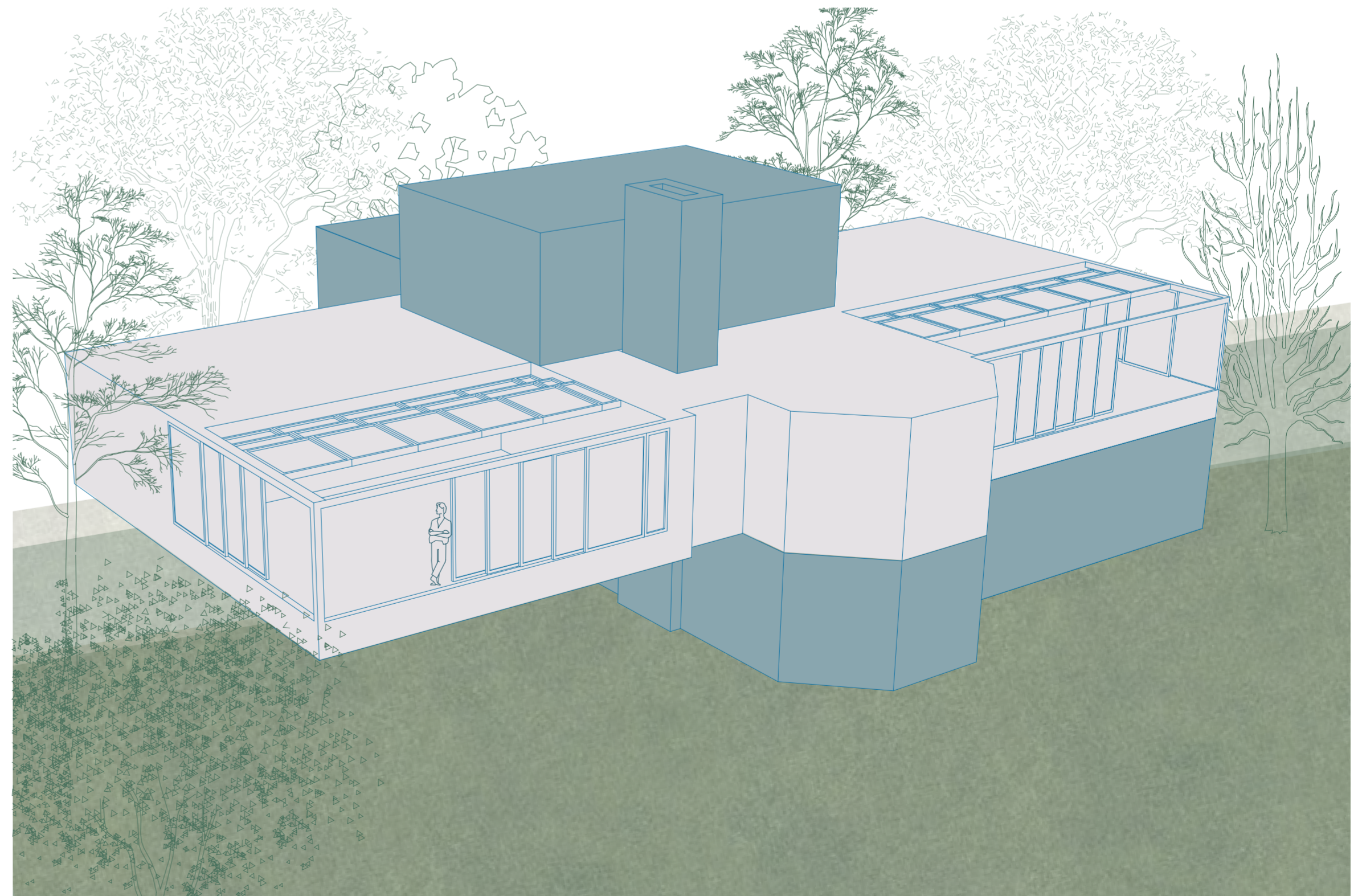
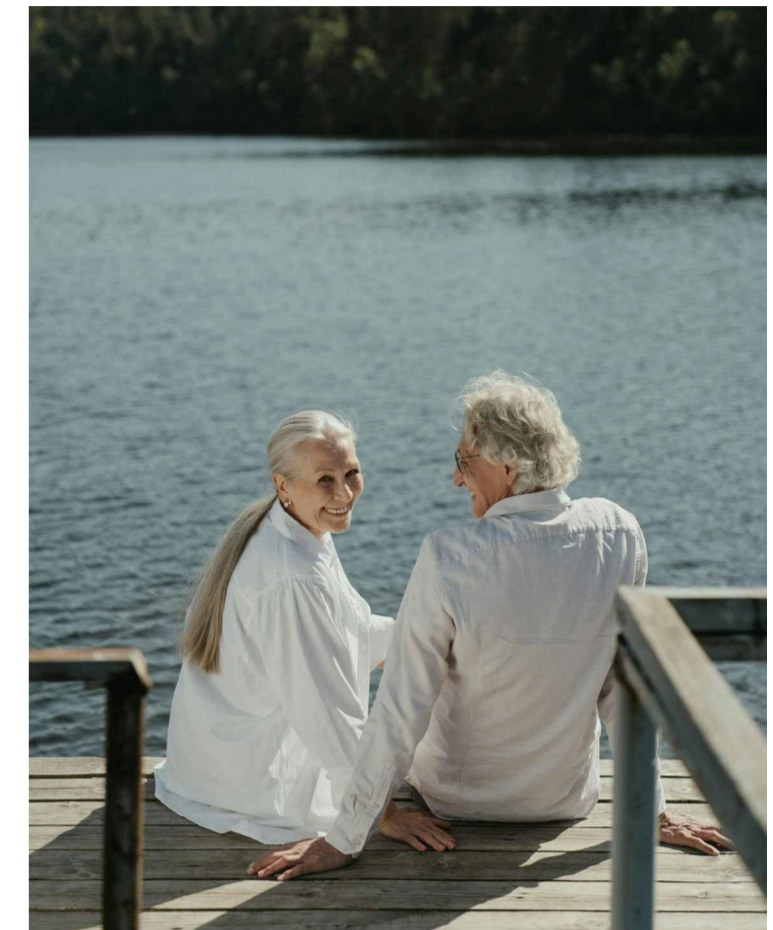
A Troyl (or Troylin in standard Cornish) is a traditional Cornish social feast or gathering, often associated with seasonal events.

The material strategy is founded on the idea of materials ageing alongside their occupants. Locally sourced and sustainable materials were selected to respond to occupation, natural light, and the changing Cornish environment, developing character through everyday use and seasonal change. Chosen for durability, low maintenance, and longevity, the palette allows the interior to age gracefully, strengthening the connection between people, place, and time. Through texture, warmth, and environmental responsiveness, the materials create a tactile and sensory experience. Responding to the brief, the strategy supports the project's themes of ageing in place, gathering, and seasonal return while enhancing long-term performance and lived experience.

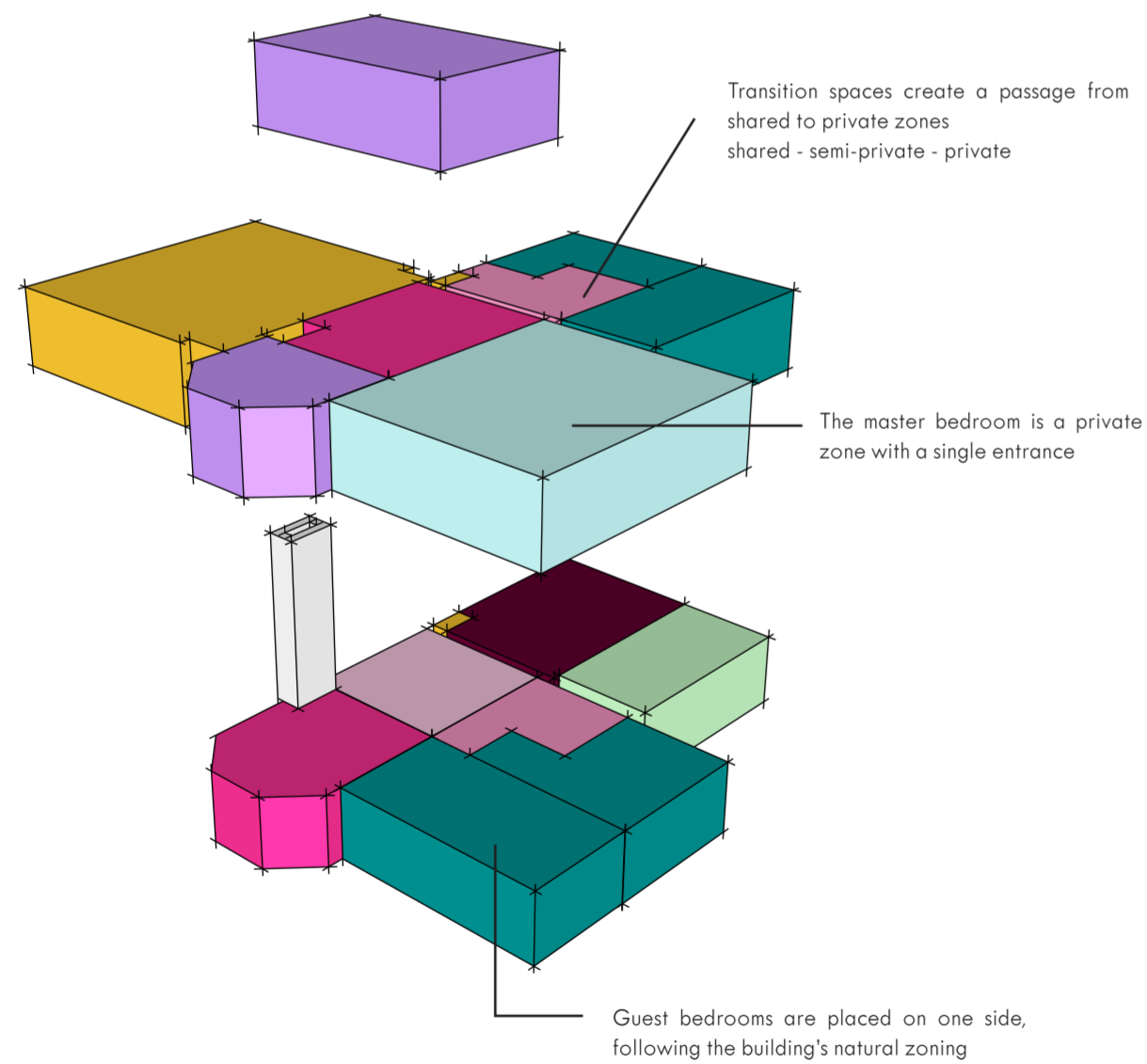
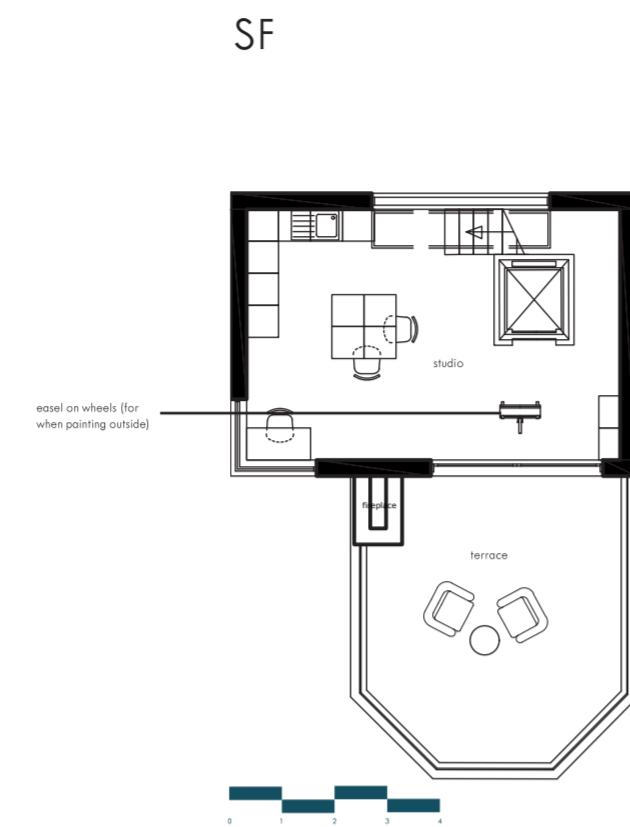
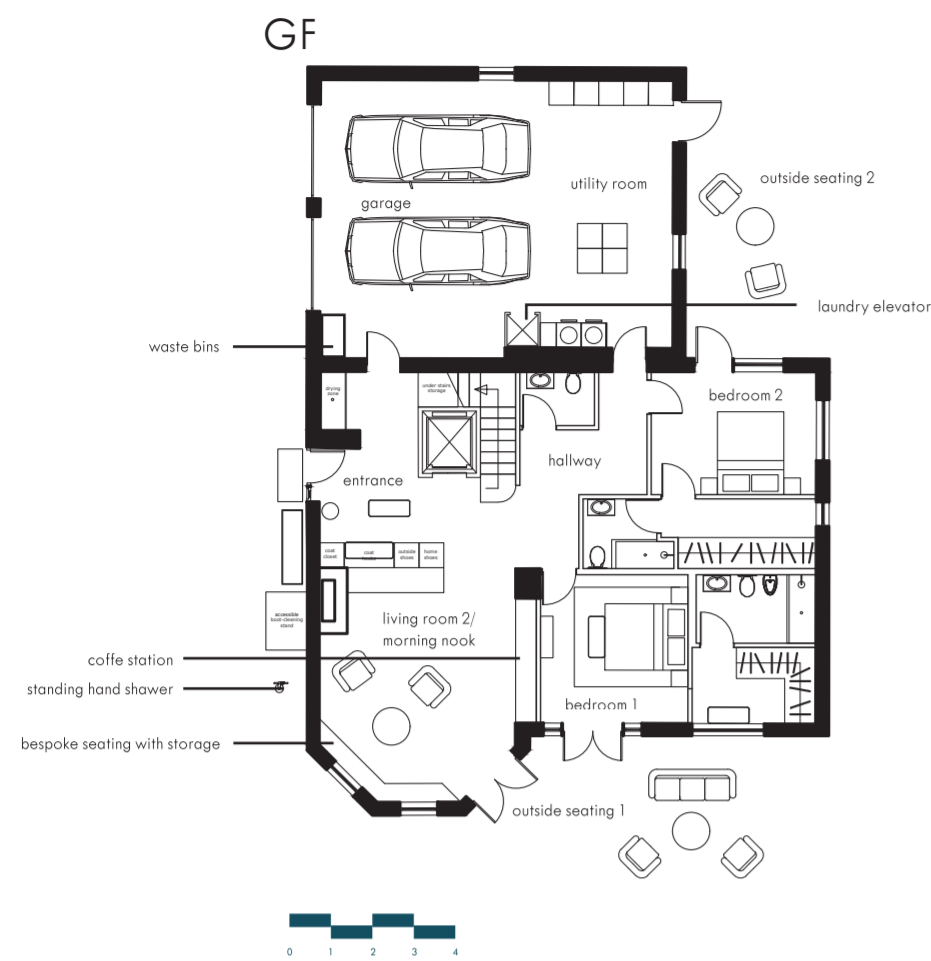
Troyls is designed for a retired couple relocating from London to Cornwall, creating a home that supports ageing in place while accommodating frequent family gatherings. Located in Trebetherick, the property benefits from panoramic coastal views and a strong relationship with the surrounding natural environment. The design responds to the clients' desire for privacy, accessibility, and flexible social spaces, balancing everyday living for two people with the ability to host larger seasonal gatherings. Sliding walls and a retractable ceiling allow the home to open fully to the outdoors, strengthening the connection to nature and the coastal setting. Inspired by the traditional Cornish Troyl, the project celebrates gathering, connection, and shared experiences throughout different stages of life.



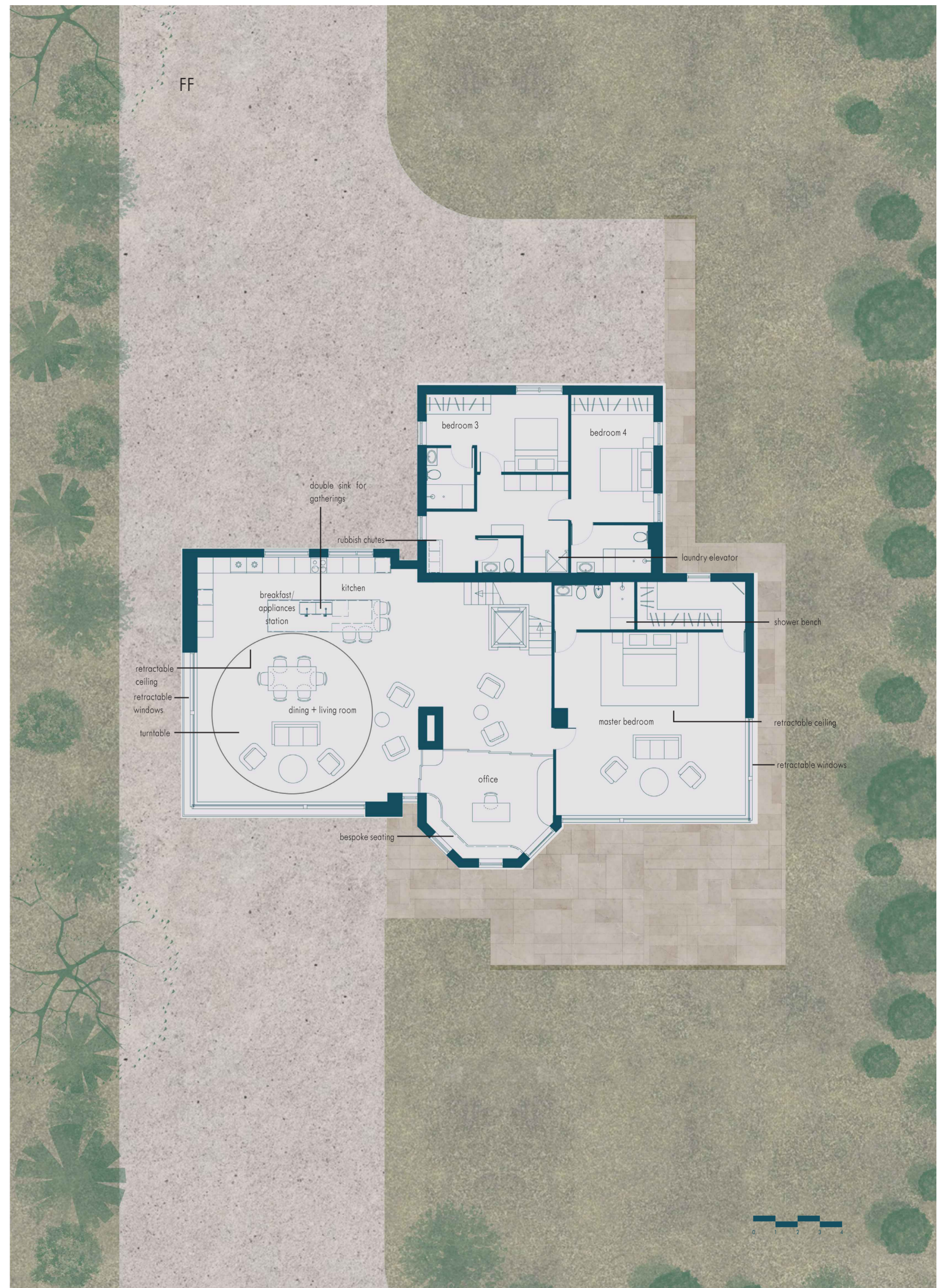
William (68) & Mary (67)



SCHEDULE OF ACCOMMODATION



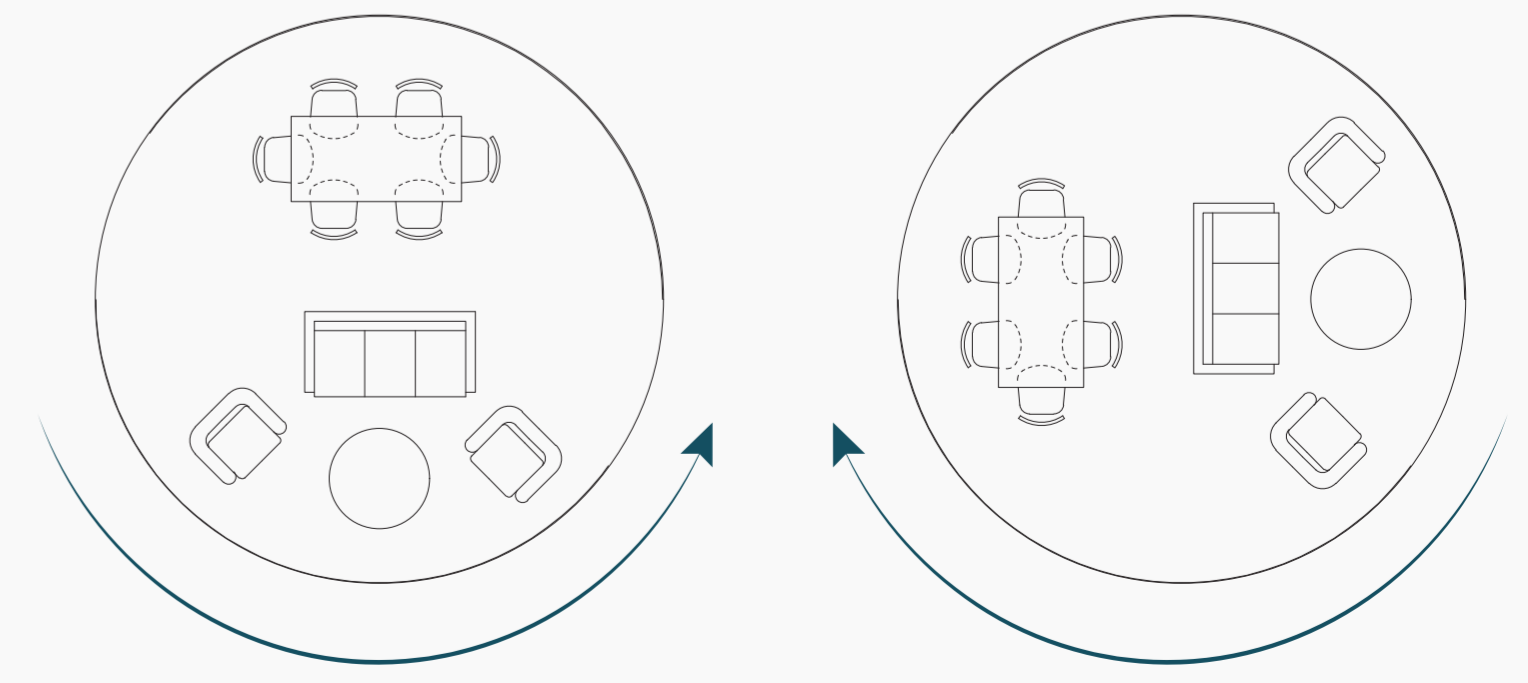
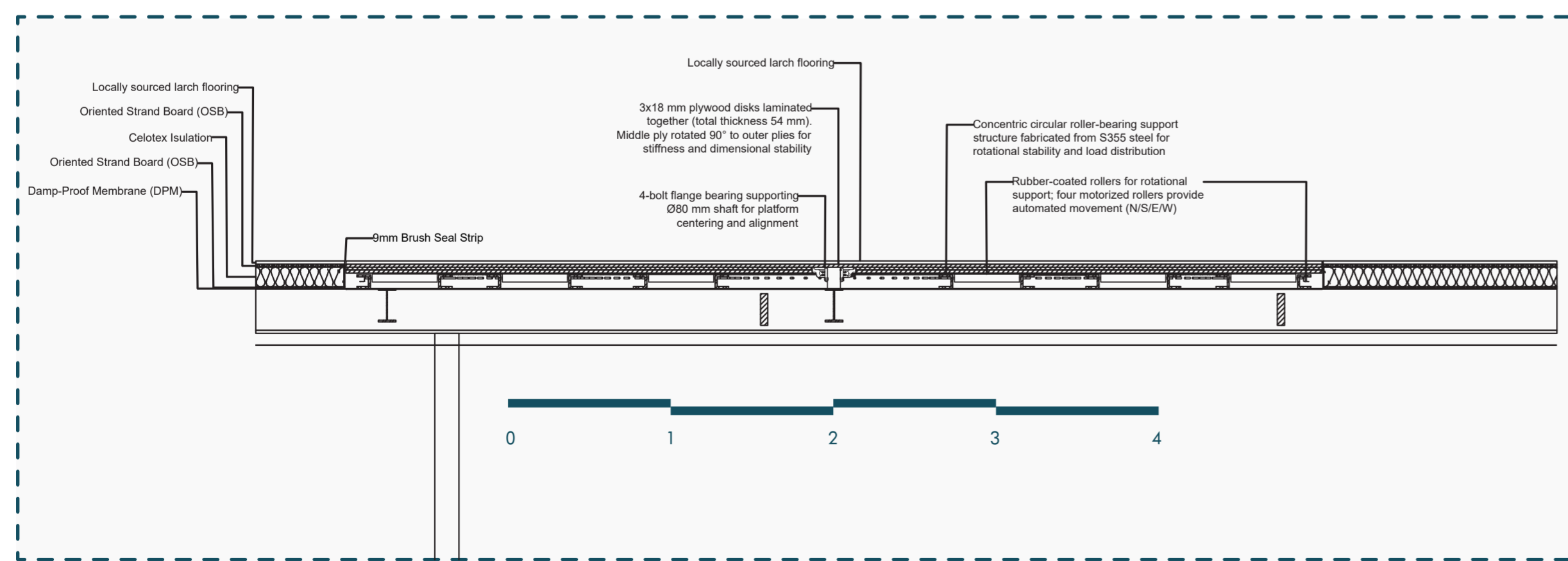
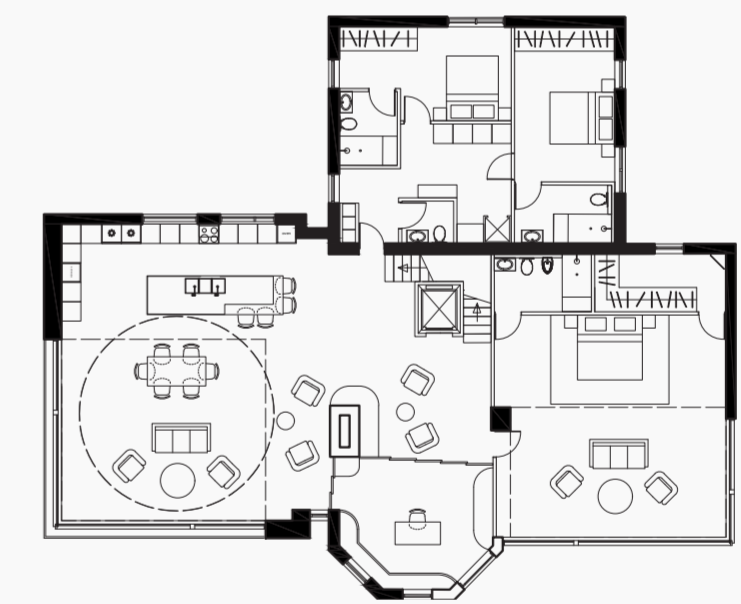
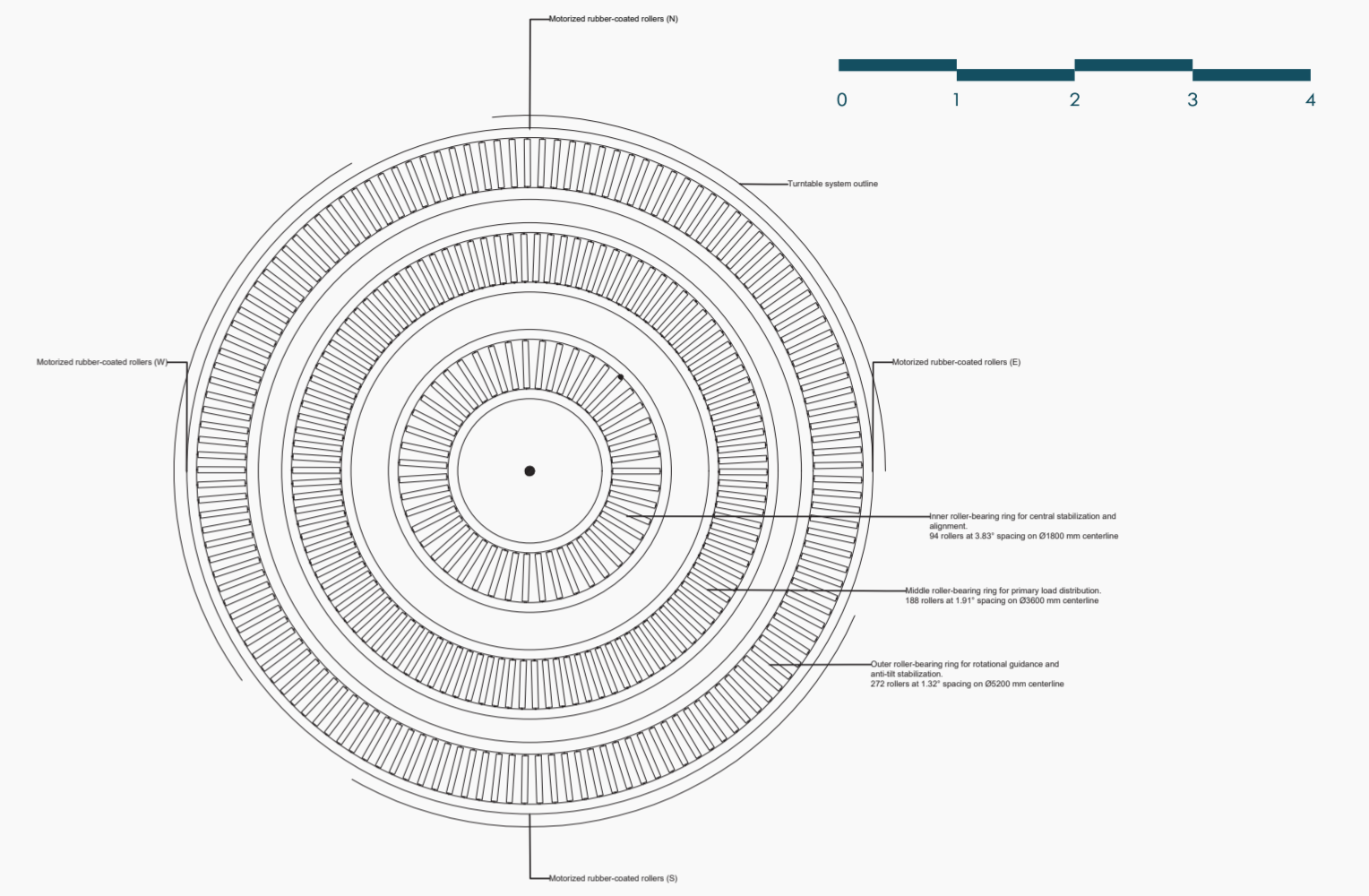
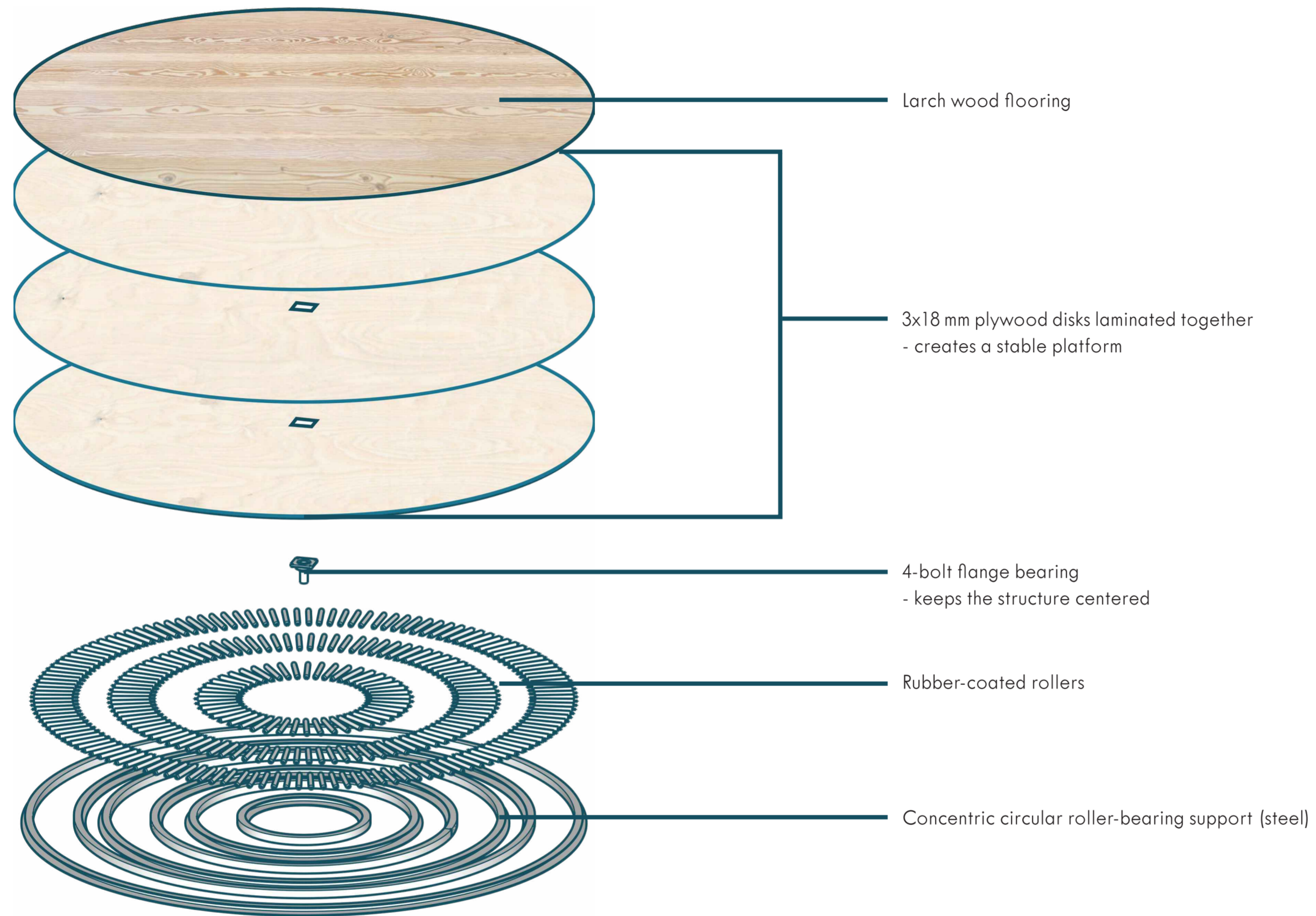
- Studio
- Hallway/gathering space
- Main gathering space (kitchen, dining, living room)
- Office
- Master bedroom (couple)
- Hallway
- Guest bedroom
- Entrance hallway
- Second living room/ Morning nook
- Guest bedroom
- Hallway
- Utility room
- Garage



The zoning strategy prioritizes the gathering space as the heart of the home while maintaining privacy for everyday living. Private spaces, including the bedrooms and office, are positioned away from the main social areas and connected through transitional zones that create a gradual shift from private to shared spaces. Located on the upper floor, the main gathering area benefits from the best views and strongest connection to nature, reinforcing its role as the primary destination for family interaction and seasonal gatherings.

FLOOR DETAIL

The turntable system creates a flexible gathering space by allowing the living and dining zones to rotate and adapt to different activities, group sizes, and views. This allows occupants to strengthen their connection to nature while avoiding fixed or overcrowded furniture arrangements.



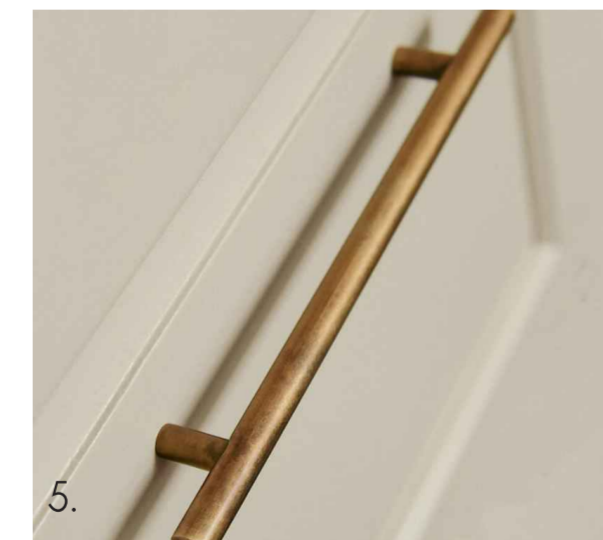
MATERIALS CONCEPT



COASTAL CONNECTION; EASE OF USE; AGING

The material palette was developed around the ideas of gathering, seasonal return, and ageing gracefully. Materials were selected for their ability to be lived in, weather naturally, and develop character through long-term family use rather than remain untouched or perfect. Sustainability and local sourcing were prioritised to strengthen the project's connection to Cornwall while supporting longevity, low maintenance, and emotional durability. As the house opens fully to the outdoors, the material strategy responds to both interior comfort and coastal conditions, creating a warm and welcoming environment that evolves alongside the family over time.

AGING WITH ITS OCCUPANTS



1. Tom Raffield - Keel - Stem Wall Light (reference - shell)
2. Pressed Type Shell Pattern Handle (reference - shell)
3. Moulding (reference - rope)
4. Flanged Cord Trim - upholstery detail (reference - rope)
5. Aged Brass Drum Pull Handle (purpose - easy-grip design for accessibility)
6. Quooker Flex Square Tap (sustainable tap solution; child safe)

image sources: pinterest; company's websites

MATERIAL SOURCE



1. Larch

Concept:

- naturally weathers to a grey-silver tone
- reflects the ageing process of human hair

Use:

- flooring
- exposed cabinetry surfaces and joinery details

Material Properties:

- FSC-certified, locally sourced
- coastal durability (suitable for indoor/outdoor)
- low-maintenance
- long-term repairable timber construction
- child-friendly wear

2. Birch Plywood

Use:

- cabinets' carcasses

Material Properties:

- marine-grade birch plywood
- stronger structurally

3. Reclaimed Teak

Concept:

- develops deeper tones as it ages

Use:

- furniture

Material Properties:

- weather resistance
- for both indoor and outdoor use

4. Porcelain

Concept:

- ocean connection

Use:

- worktops

Material Properties:

- heat resistant
- stain & UV proof
- indoor/outdoor use
- easy maintenance
- waterfall edge detail

5. Wall Plaster

Concept:

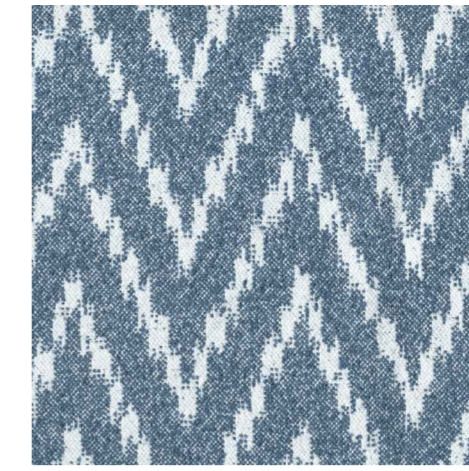
- ocean connection (colour)
- sand connection (texture)

Use:

- walls

Material Properties:

- 100% natural wall finish
- natural humidity regulation
- improved air quality
- thermal & acoustic performance



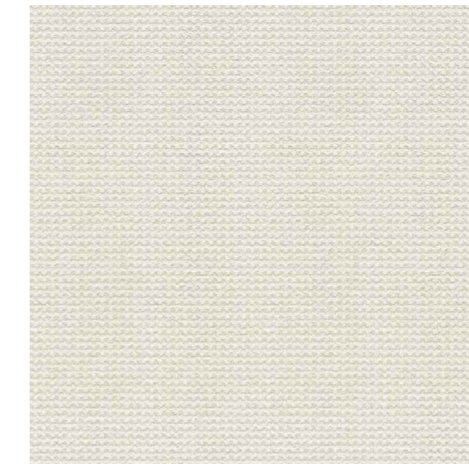
Aegean, IDRA

Use:

- upholstery

Material Properties:

- 99% recycled polyester
- aqua clean technology (easy maintenance)
- suits the coastal lifestyle



Aegean, ICARIA

Use:

- upholstery

Material Properties:

- 100% recycled polyester
- aqua clean technology (easy maintenance)
- suits the coastal lifestyle



LENNOX

Concept:

- lightweight and responsive, enabling gentle movement with passing wind

Use:

- curtains

Material Properties:

- 57% recycled polyester, 43% polyester
- butterfly pinch detail



TENBY

Use:

- upholstery

Material Properties:

- 51% recycled polyester, 49% polyester

