

"Be Sustainable" is a phrase used almost by everyone, but in times like these people find it hard to be sustainable, especially the younger generation, without falling into the loop of quick and cheap available things.

This project addresses the issue of material waste created from following trends in interiors and lack of safe environment to "be sustainable".

The ReVamp Shed aimed at younger population of London and the residents of Hackney Wick provides a safe space for people to work on up-cycling the existing materials and furniture with a workshops spaces where the visitor is offered to understand more about the importance of reuse and what disadvantages quick production of furniture has. It also offers an exhibition space where people can celebrate what has been created through the up-cycling process. Connecting the old to create new.





Making process of the chair



Looping the wire to secure the chair



Cutting off excess wire



Parts of the product/furniture used for recycling into a chair.



Bending the pet cage piece



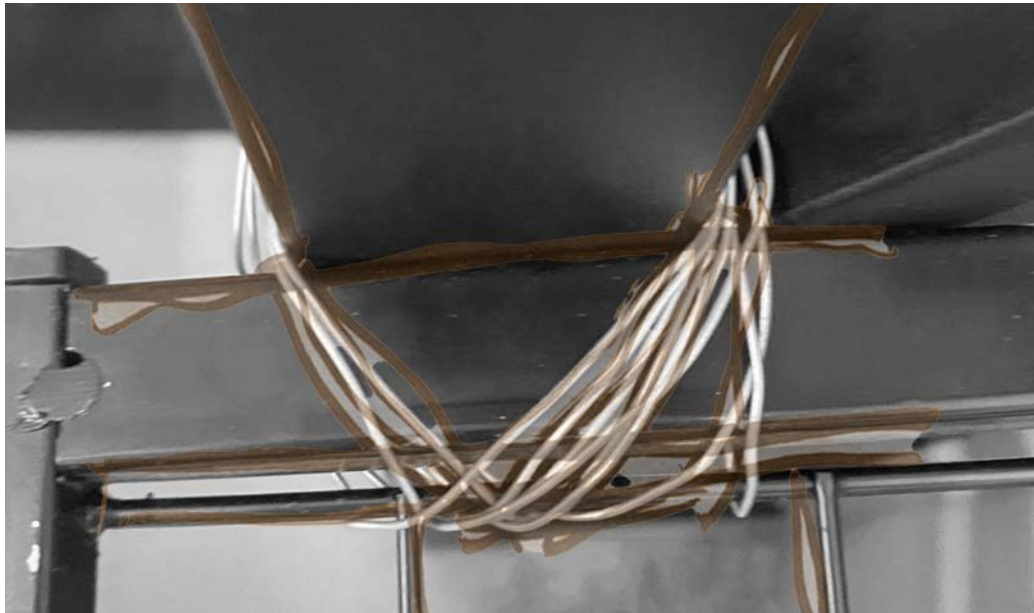
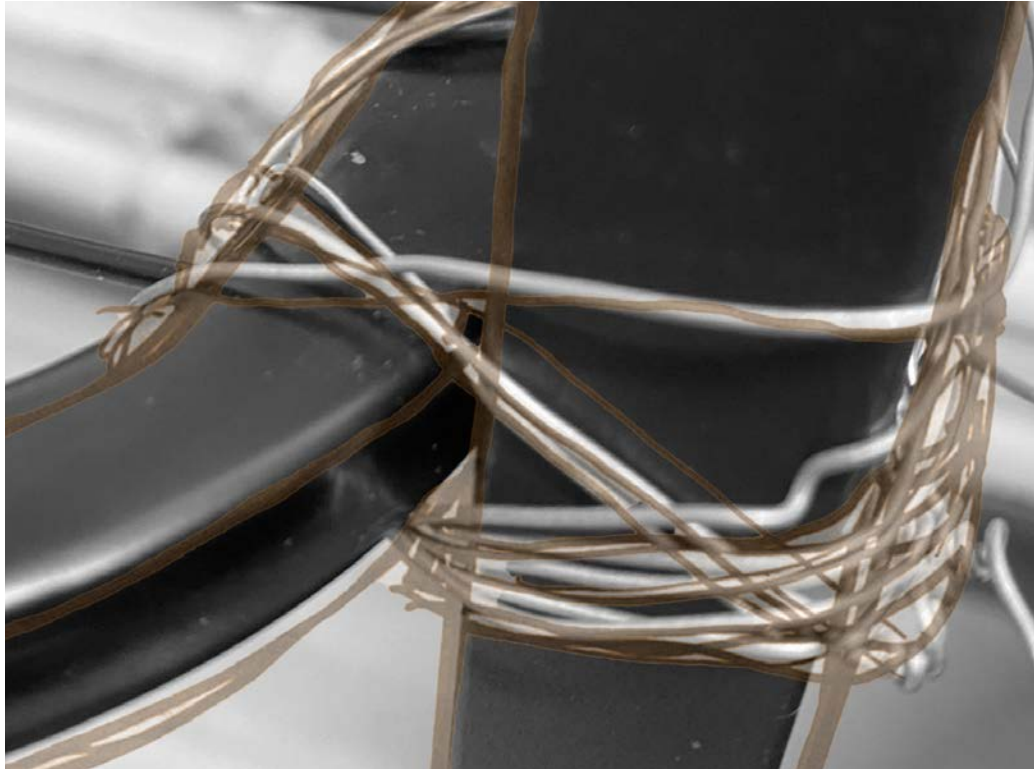
Attaching the TV stand piece



The making of the chair video  
<https://youtu.be/7d9URT2HevU?feature=shared>



Inhabitation of the chair



The wire tie detail



The chair

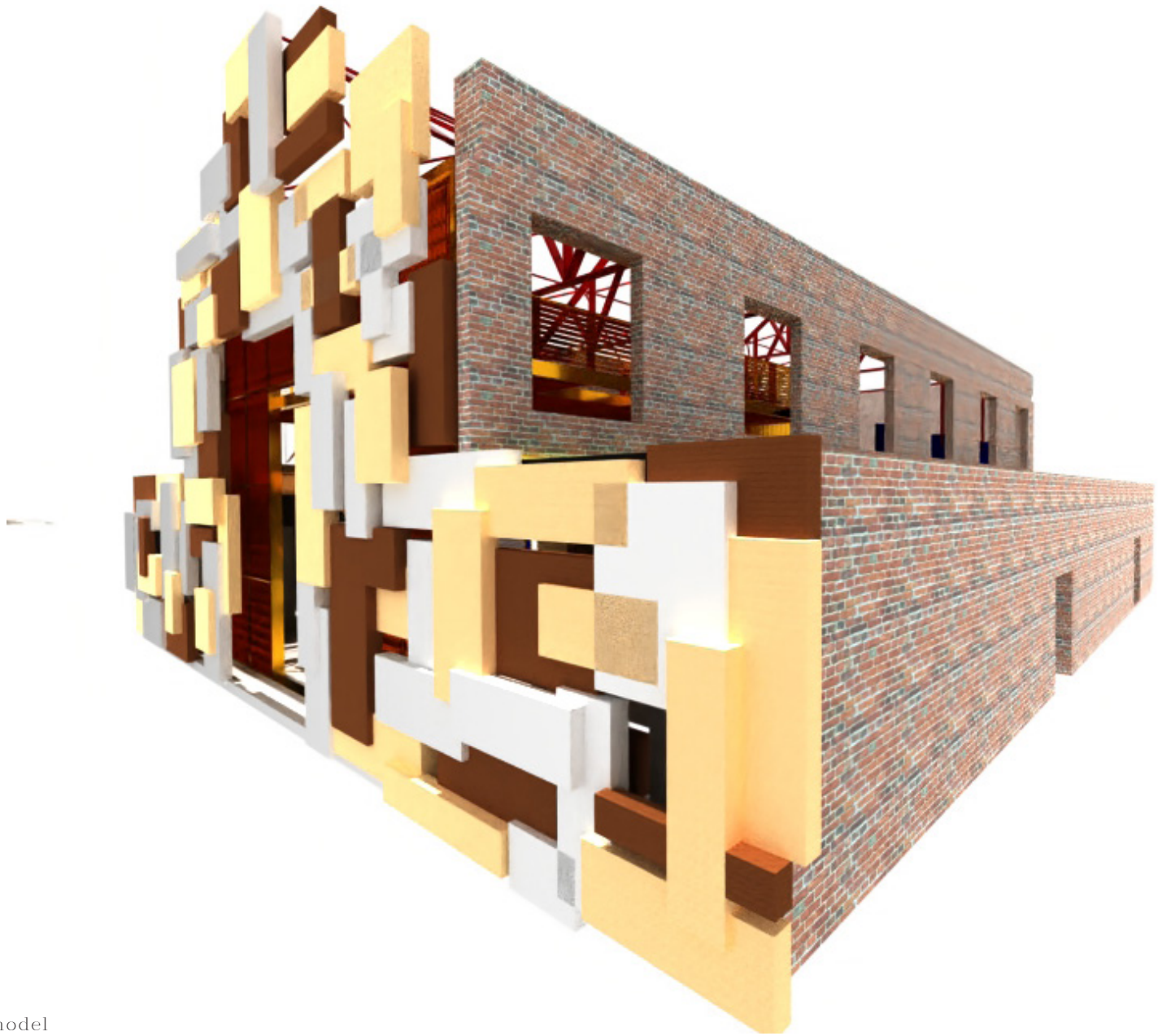


Making process of the facade



Physical model with artificial light,

Precedent; Jellyfish Theatre 2010



Digital model



