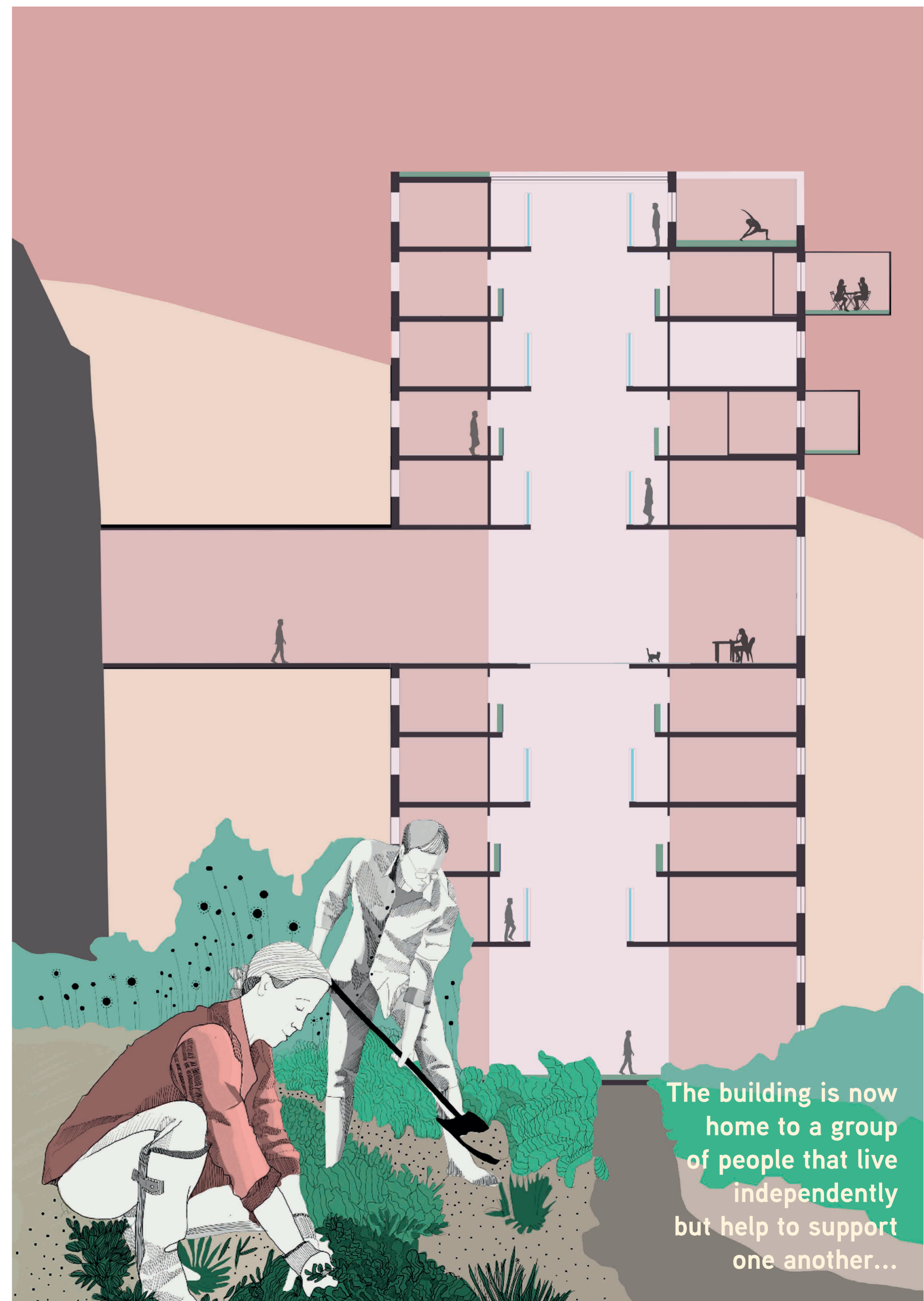


The Harlech Collective

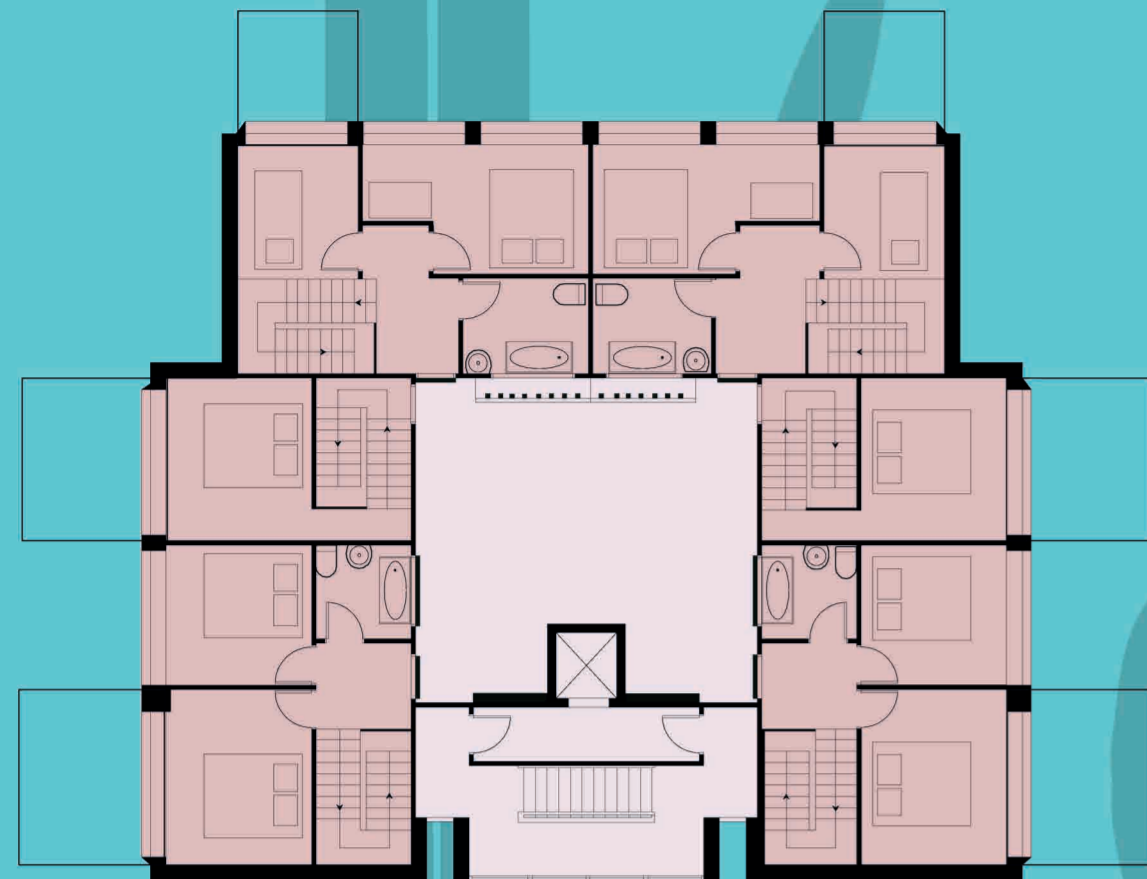


In Snowdonia National Park
beside the sea,
beside the mountains,
sits a building that was left unused...



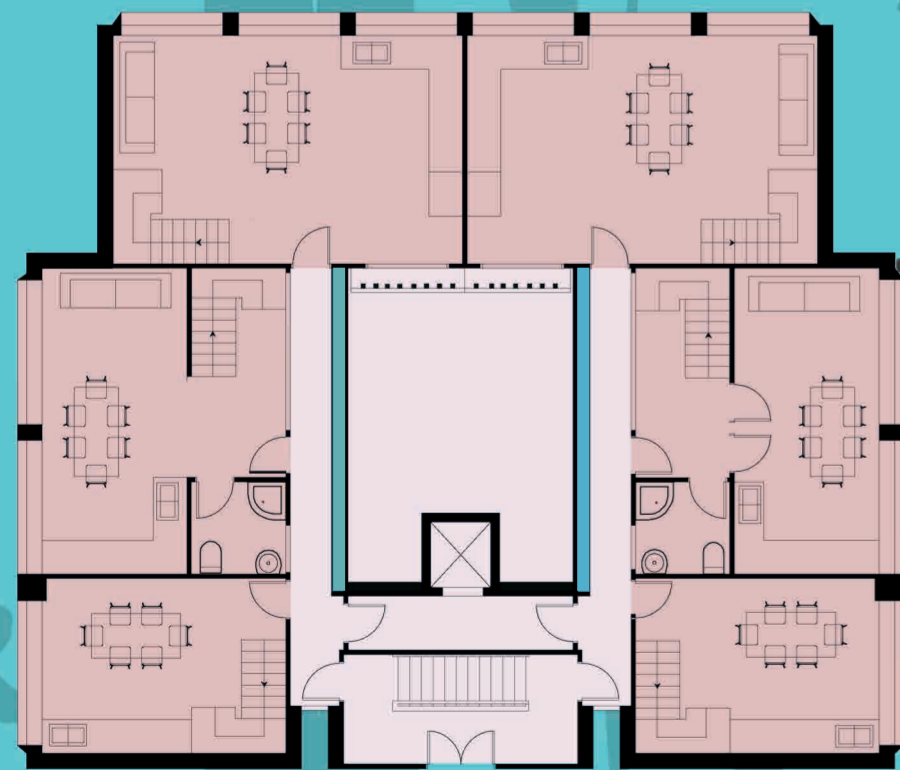
The building is now
home to a group
of people that live
independently
but help to support
one another...





Upper Floor Apartment Plan

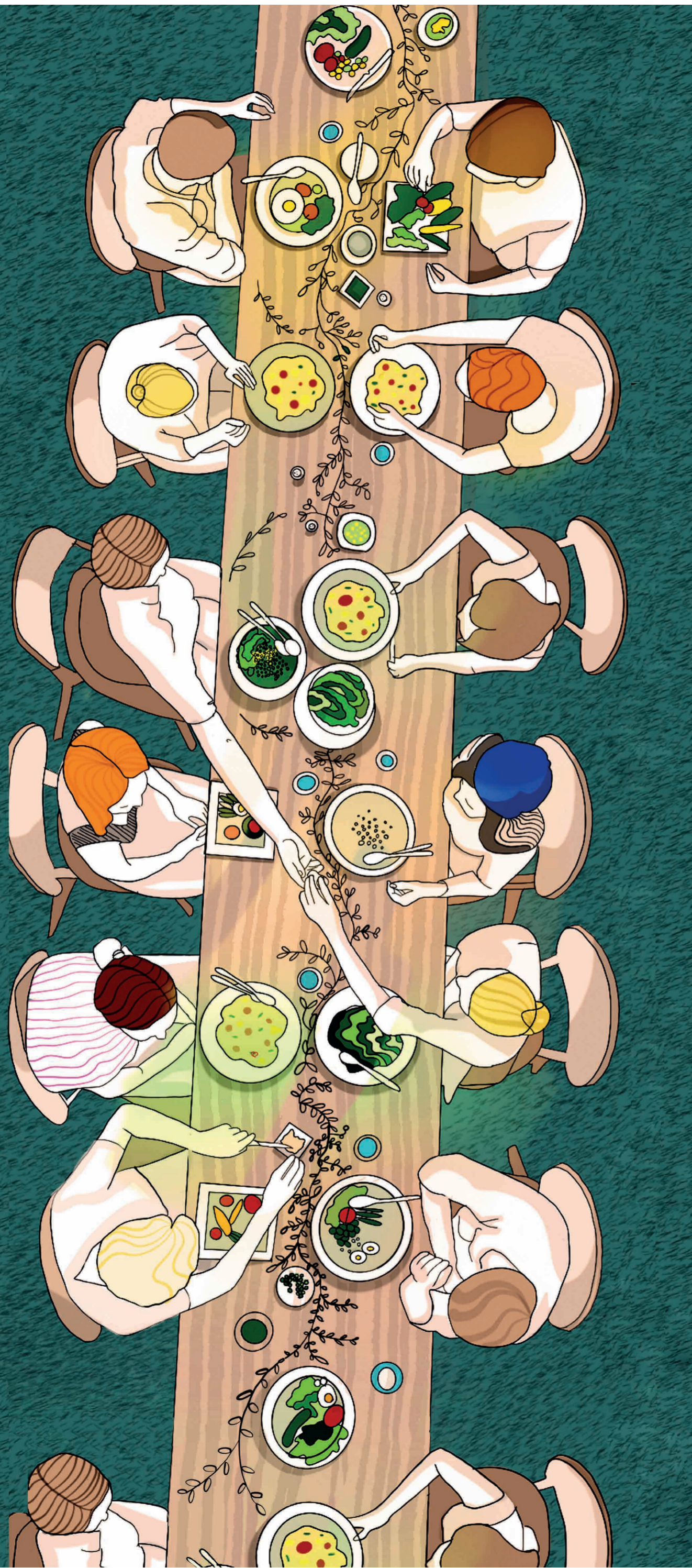
people can enjoy the hydroponic planting
and fish as they pass through the atrium...



Lower Floor Apartment Plan



everyone comes
together for the
evening meal...



before residents return
home to enjoy the sunset.

