

Innovation Practice & Process

FLAIR

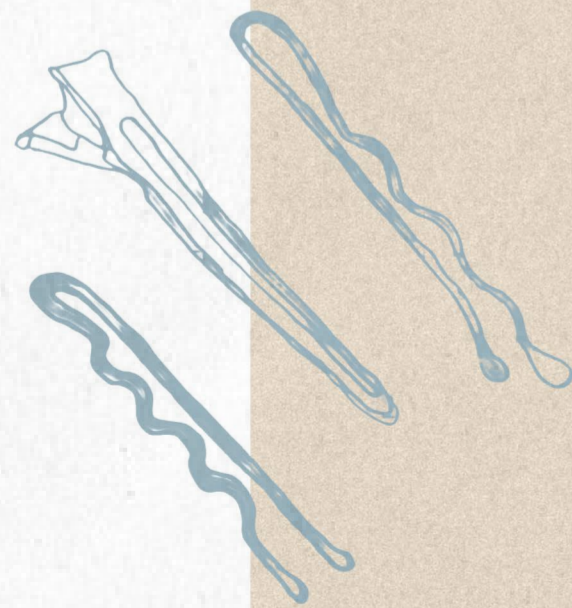
a salon for women facing the emotional journey of hair loss.

Flair re imagines the salon environment through a research-led design approach that challenges the clinical atmosphere often associated with hair loss treatment.

The project investigates how interior design can support emotional healing and well-being, translating insights into the psychological and social effects of hair loss on women into a therapeutic interior framework.

Inspired by the movement, texture, and fluidity of hair, the design uses flowing forms, layered materials, and continuous lines to create comfort and reassurance.

Carefully planned zoning balances openness and privacy, integrating consultation, treatment, styling, and wig services within a cohesive, supportive environment focused on dignity.



West Ferry Station

20 Douglas Terrace

• SITE

HISTORY OF SITE

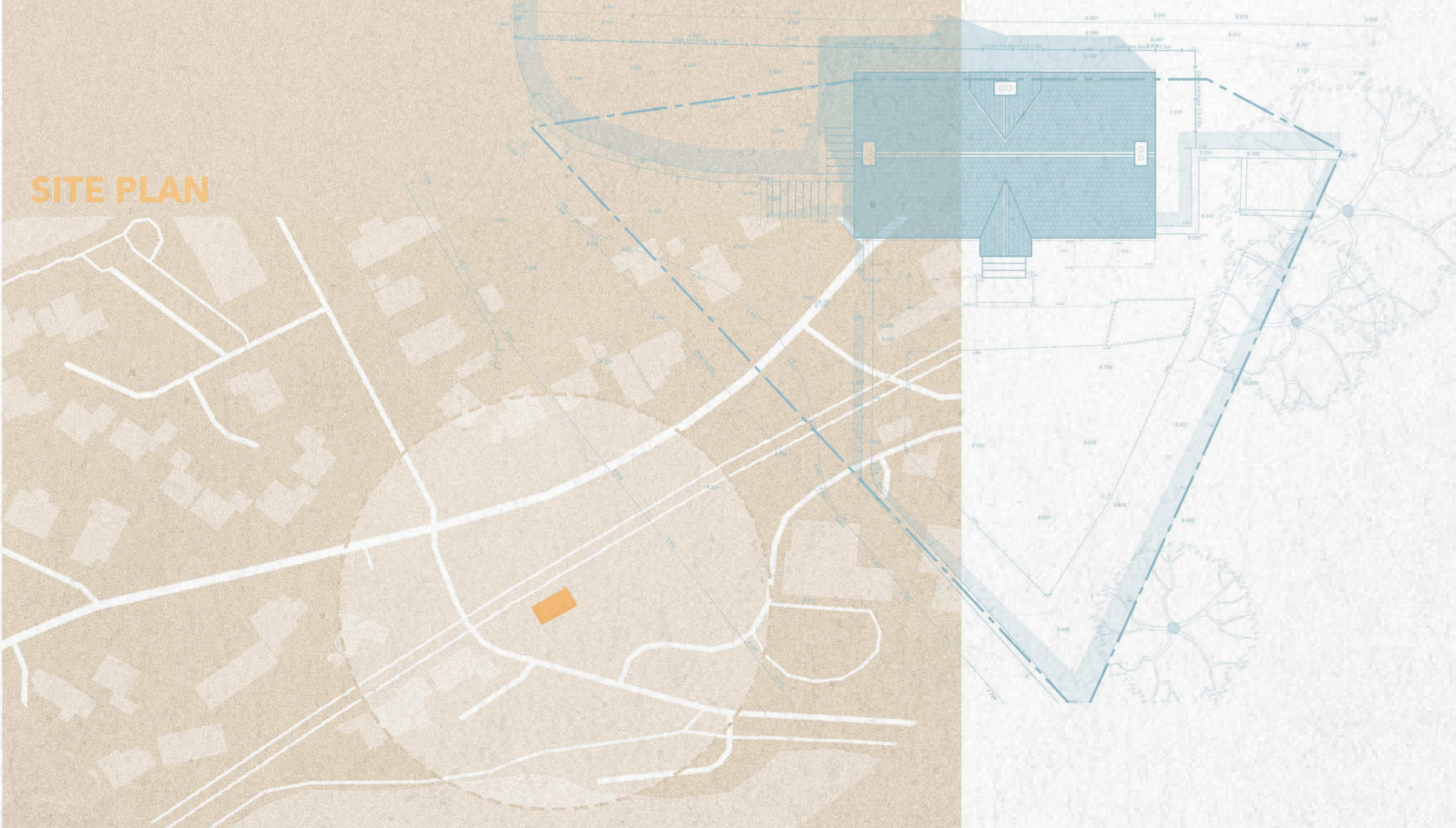
West Ferry station opened in the late 1830s, serving local residents, especially wealthy commuters.

It briefly closed during World War I but reopened soon after due to public demand. The station was permanently closed in 1967 as part of the Beeching cuts.

ORIGINAL SITE IMAGES



SITE PLAN



• INFLUENCE

A few key factors that supported the initial research process and helped define the main design focus points

PERSONAL EXPERIENCE



OTHER BUISNESSES

kinfolk.



GAIL PORTER



• HAIR LOSS

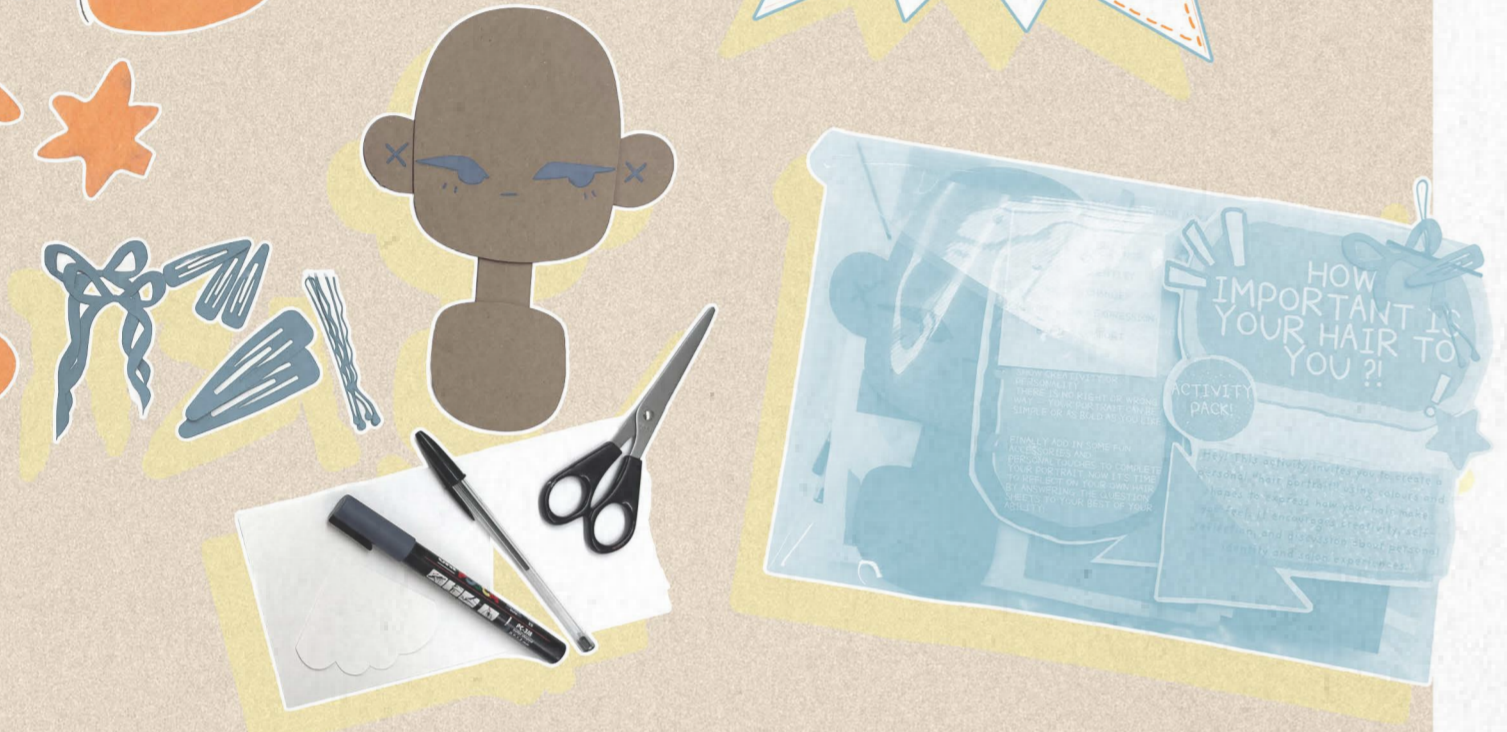
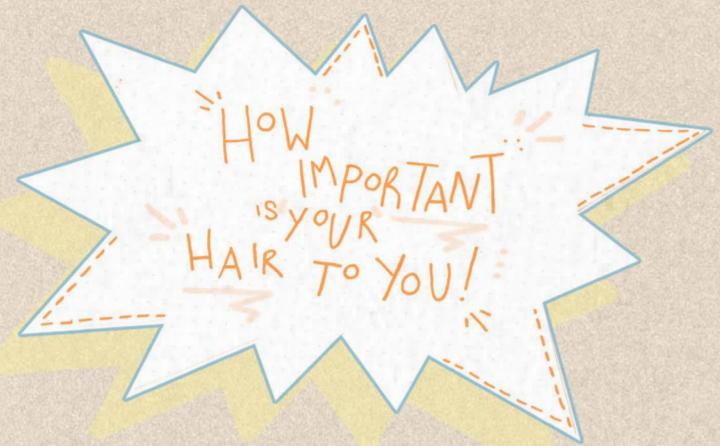
Alopecia - Medical term for hair loss.
can affect confidence, identity, and emotional wellbeing, making supportive and empathetic environments essential.



• ENGAGEMENT

PRIMARY RESEARCH - ACTIVITY

Tool to understand the relationship between hair, identity, and emotional wellbeing



Participants used colours, shapes, and textures to visually communicate their personal relationship with their hair.

EXAMPLES

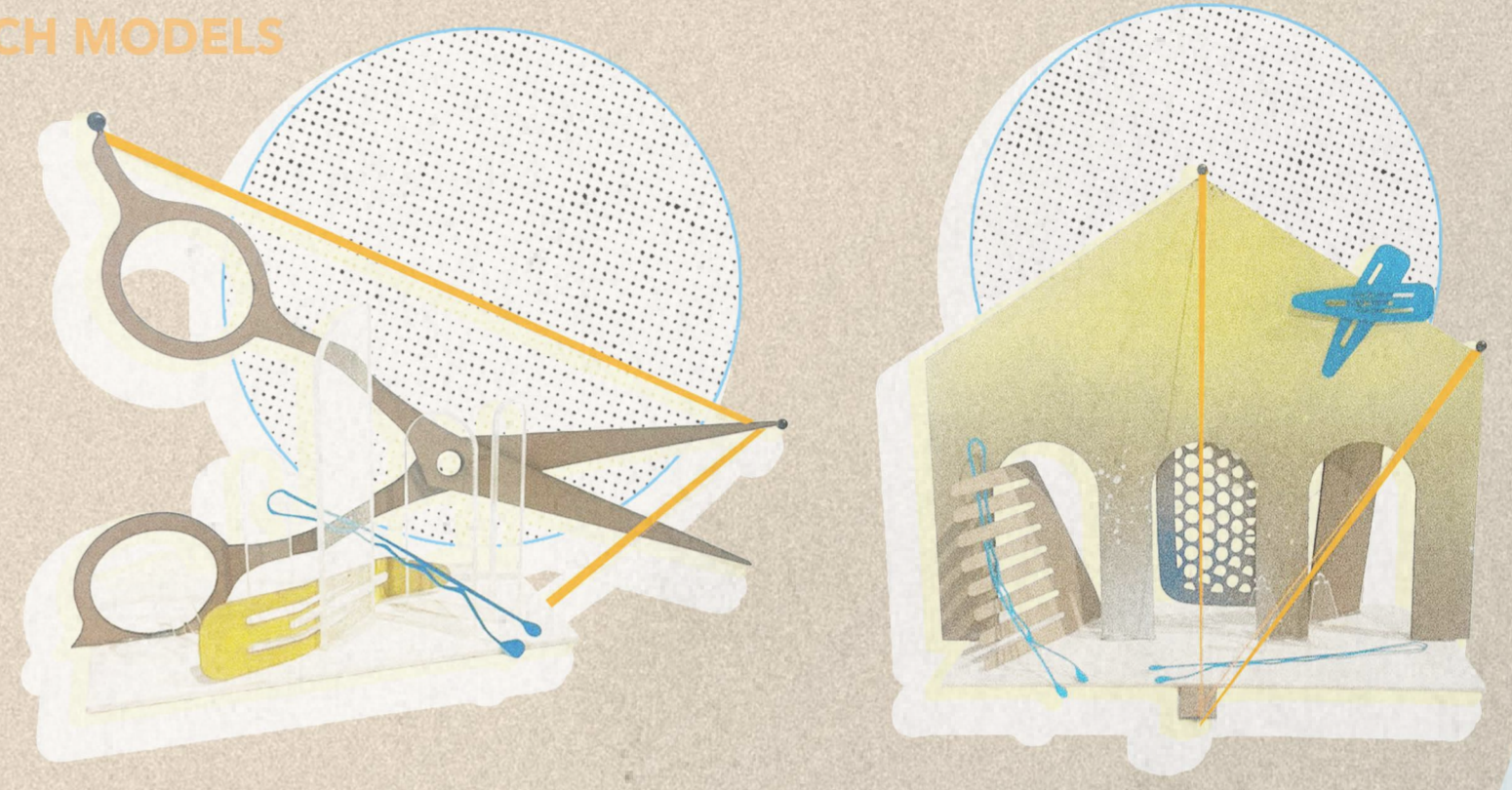


• INSPIRED

FROM HAIR TO SPACE

Hair forms, textures, and tools inspired the interior's flowing curves and organic shapes.

SKETCH MODELS



IMAGERY

Inspired by the fluidity of hair and the sculptural qualities of styling tools



• MATERIALS

The colour palette and material selection were inspired by natural hair tones, textures, and movement

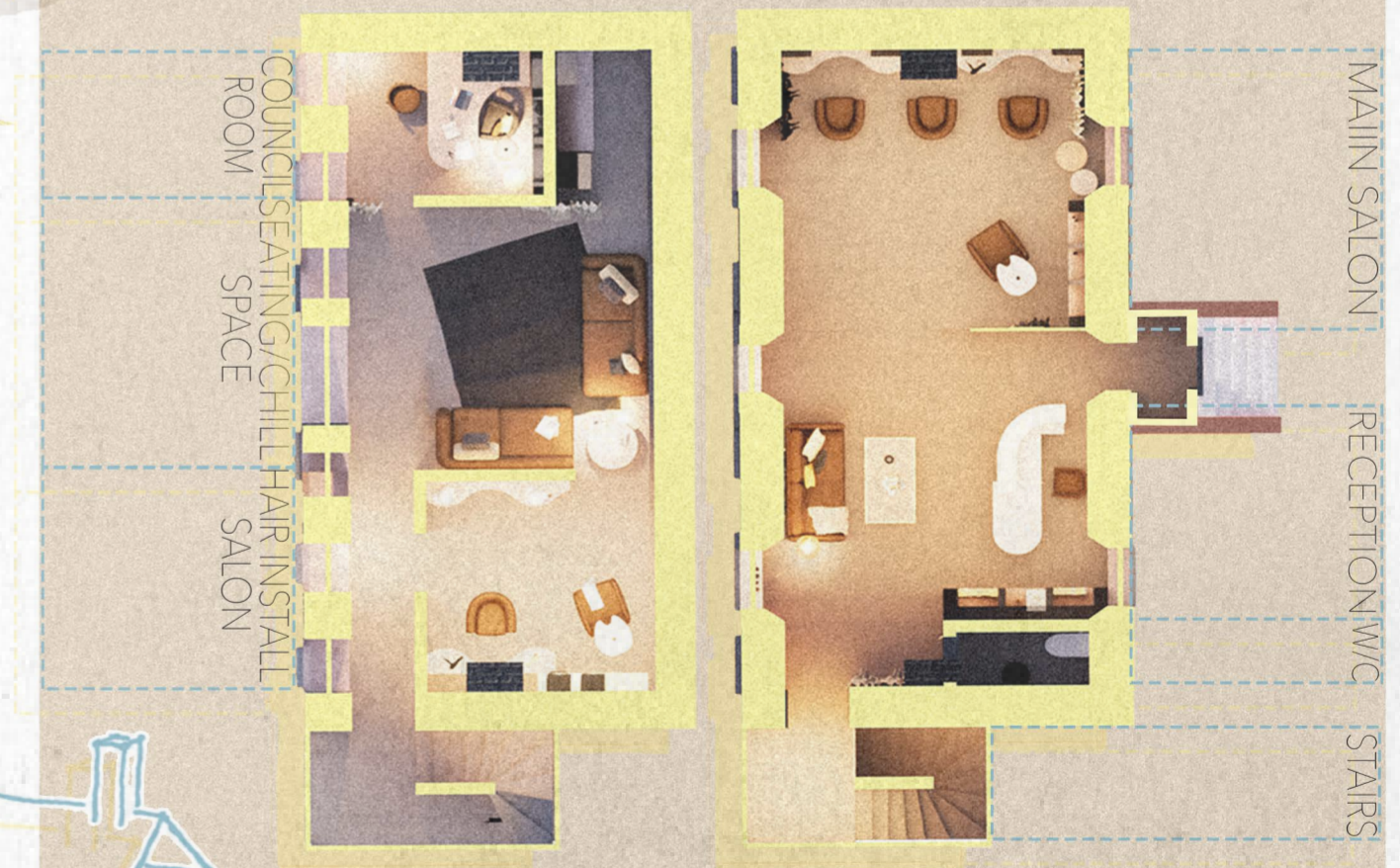


• TECHNICAL

HERO SECTION



PLANS



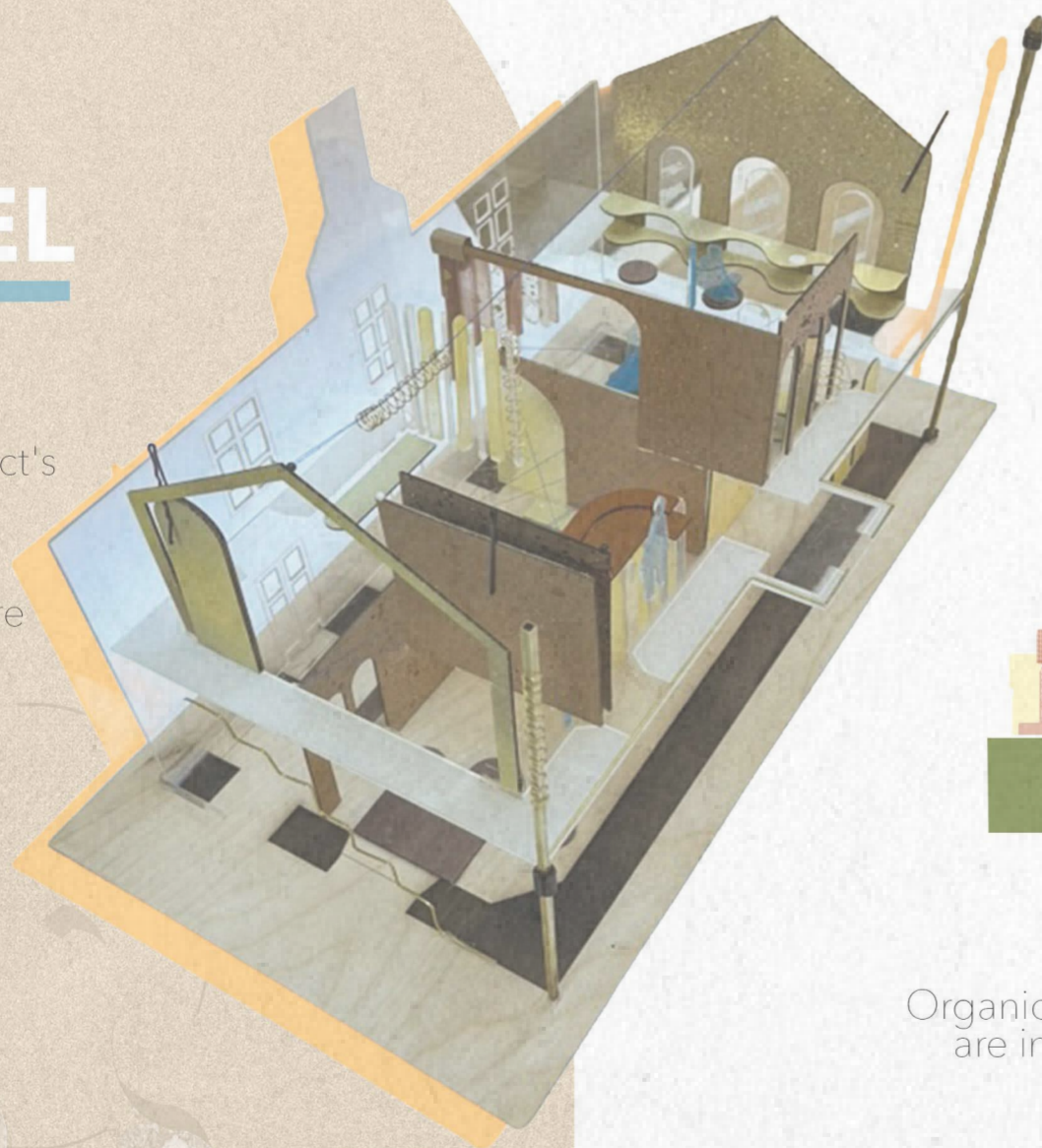
The compact space was carefully planned to maximise functionality while creating a sense of openness, making the interior feel larger

• SCALE MODEL

1:25

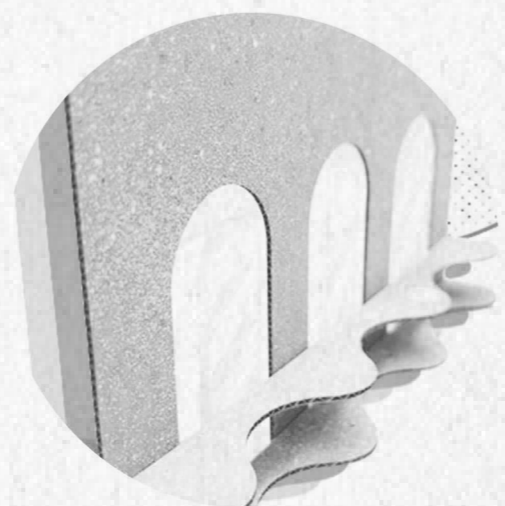
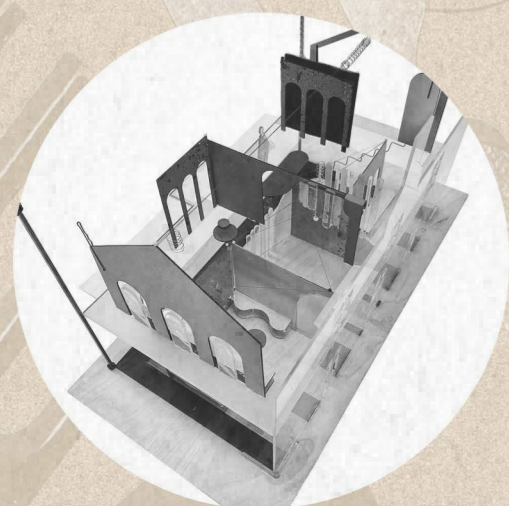
constructed using laser-cut wood and paper components to explore the project's spatial layout, form, and material relationships.

Hair accessories and metallic details were added to reference inspirations



EXPLODED KIT OF PARTS

Organic forms derived from hair textures and shapes are integrated into partitions, furniture, and spatial features.



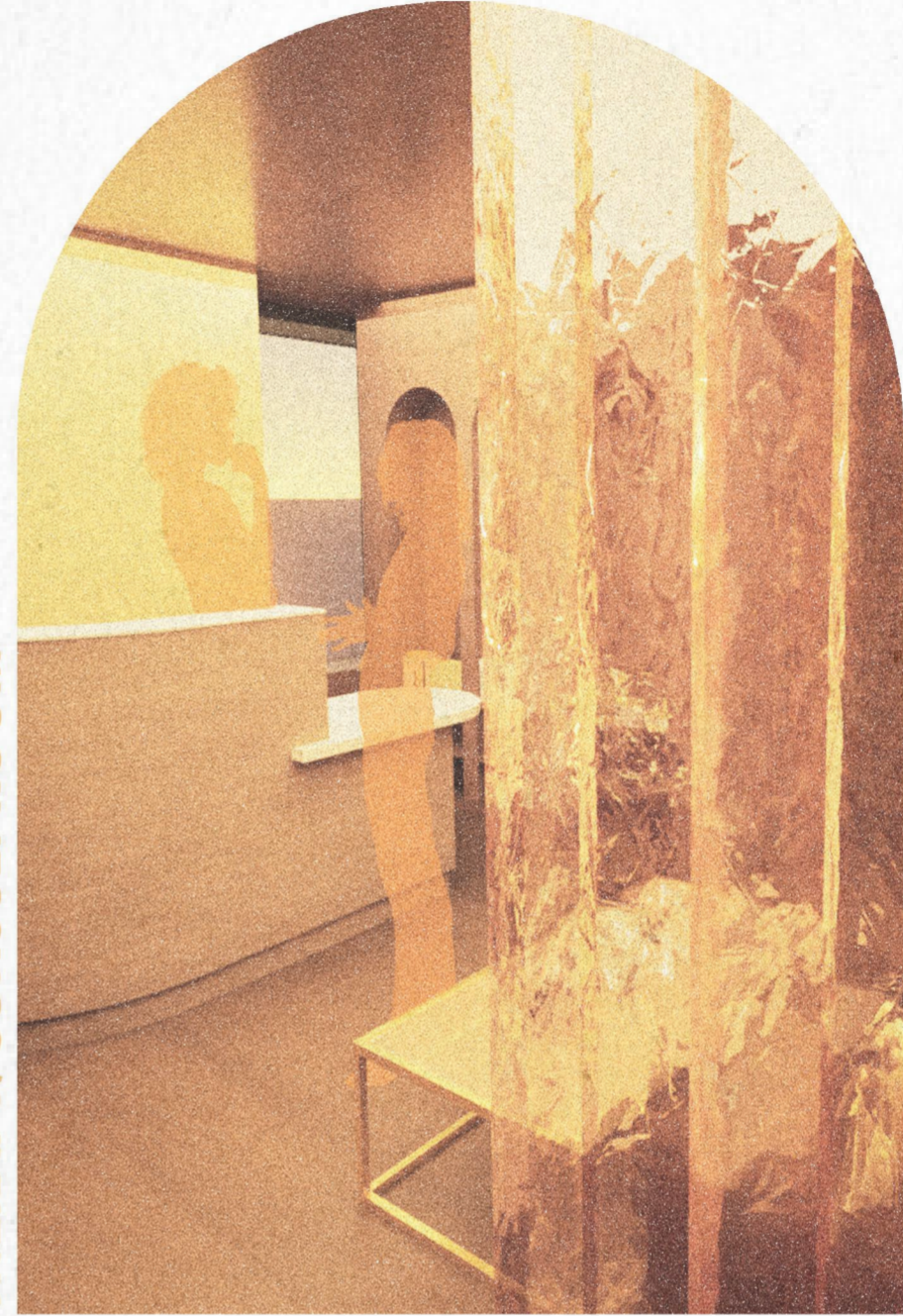
• RENDERS/VISUALS



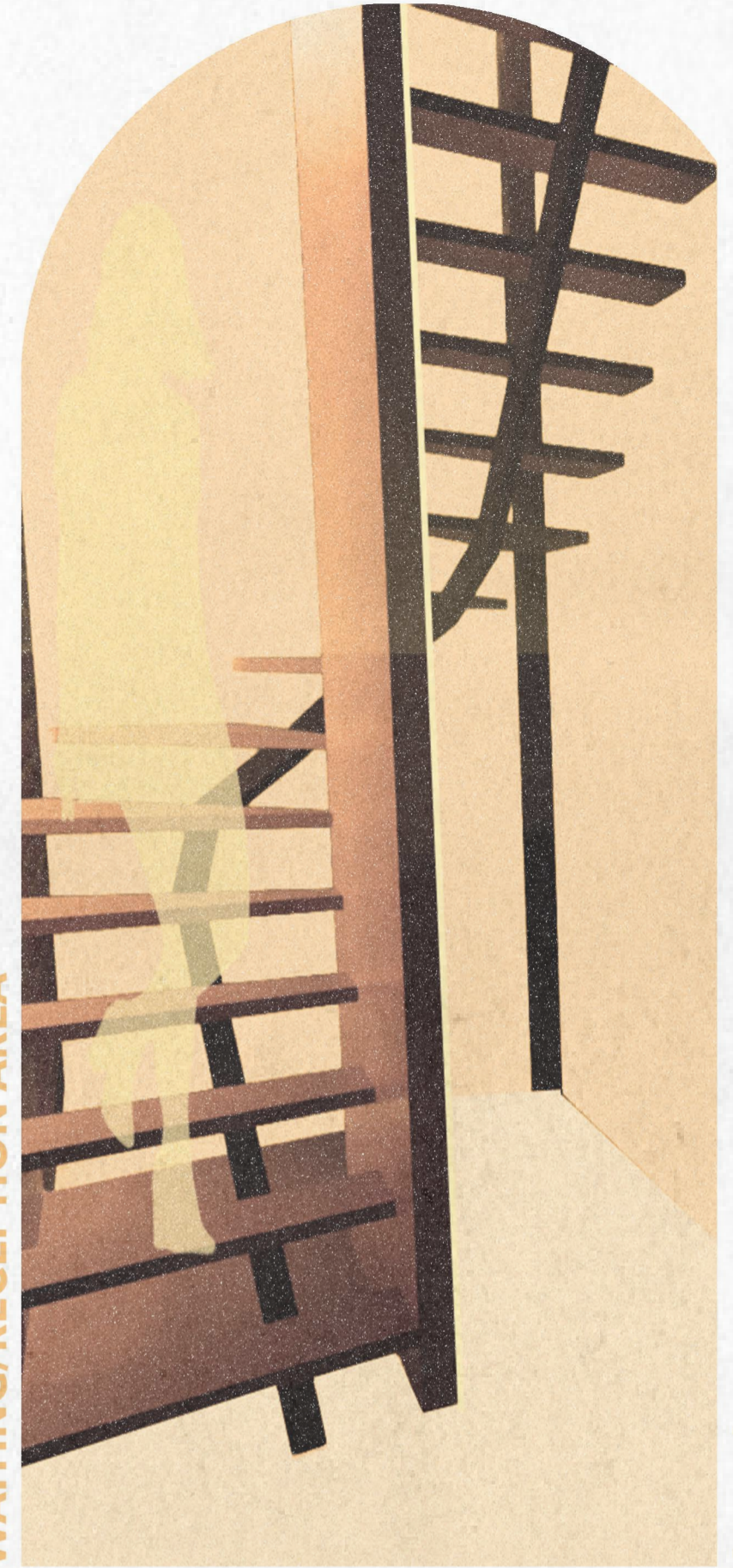
SEATING/CHILL SPACE



THERAPY/CONSULT ROOM



WAITING/RECEPTION AREA



STAIRS



MAIN SALON SPACE