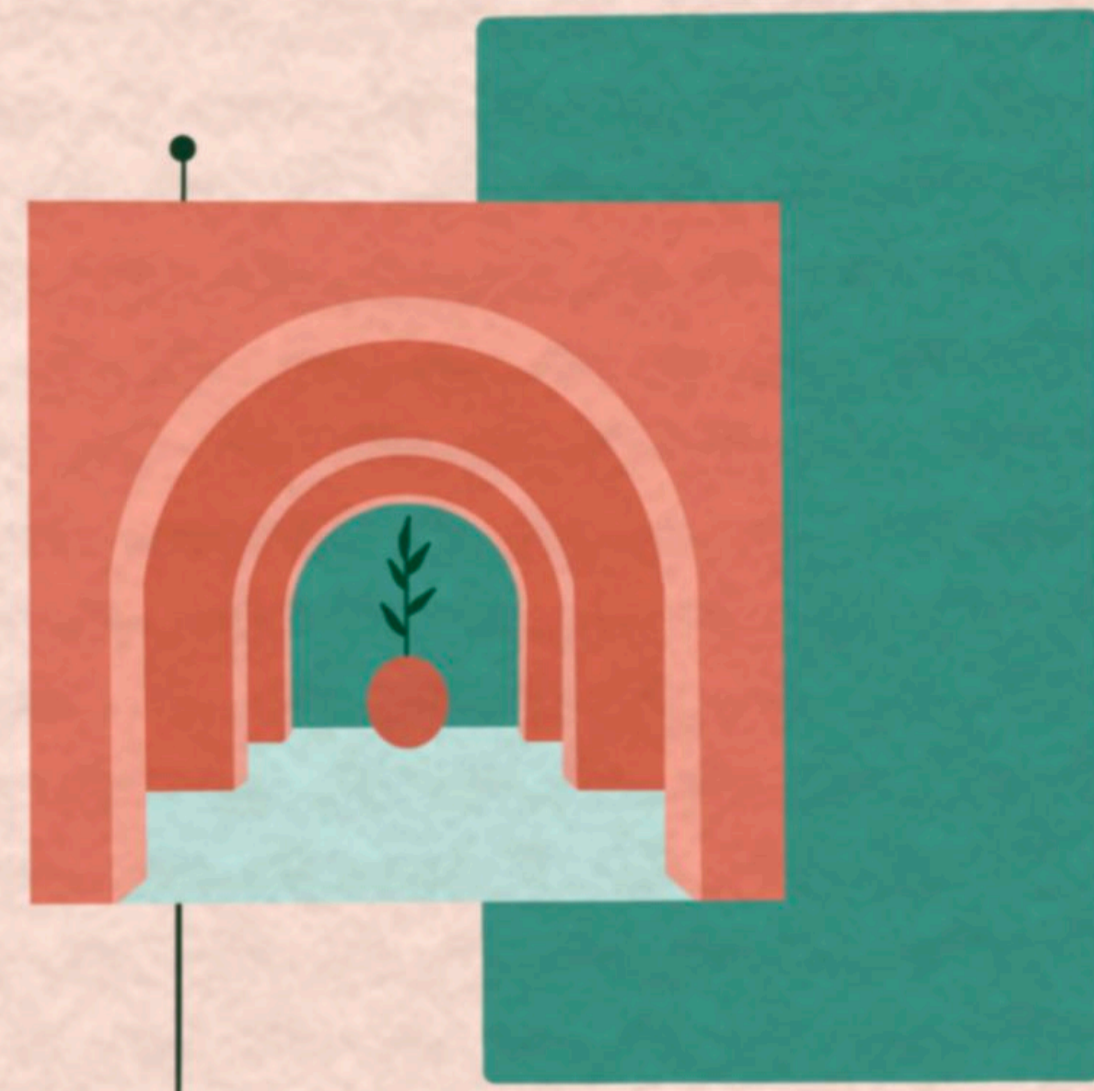


Vignettes repeatedly explore moments of continuity, softness, and comfort; through perspective, placement, oblique and inverted reiterations, reflections, shadows, contrasting scale, colour balance, and texture.

CURVES

Curved shapes can be associated with sweet taste, quiet calm sound, vanilla smell, green colour, smooth texture, revived emotions and female gender.



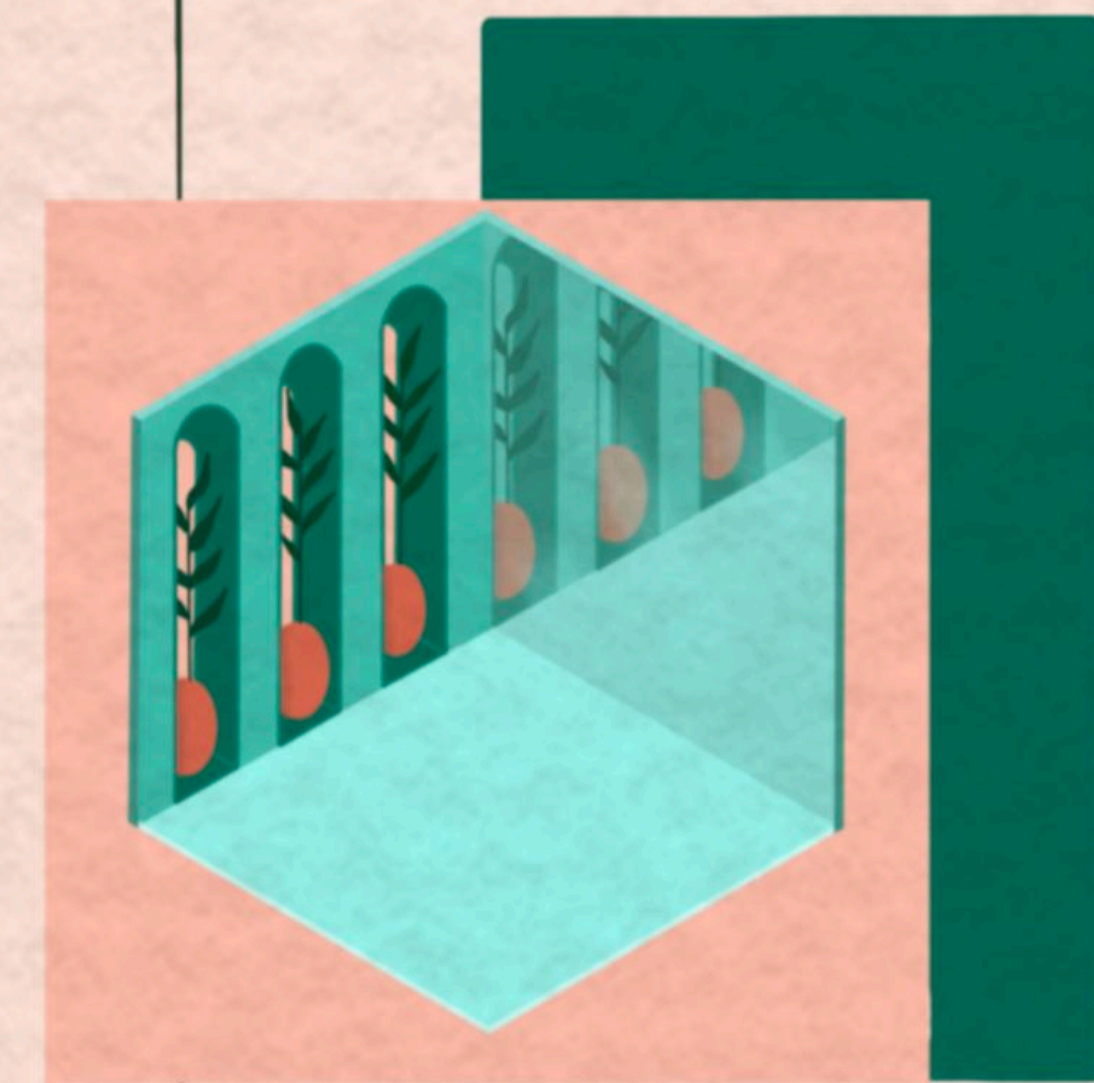
COLOURS

Orange can be associated with joy, warmth, heat, sunshine, enthusiasm, creativity, success, encouragement, change, sexuality, freedom and expression. Cool colours, such as green, blue and purple, engender feelings of calmness. Grainy textures soften the simple forms and contrasts in colour.



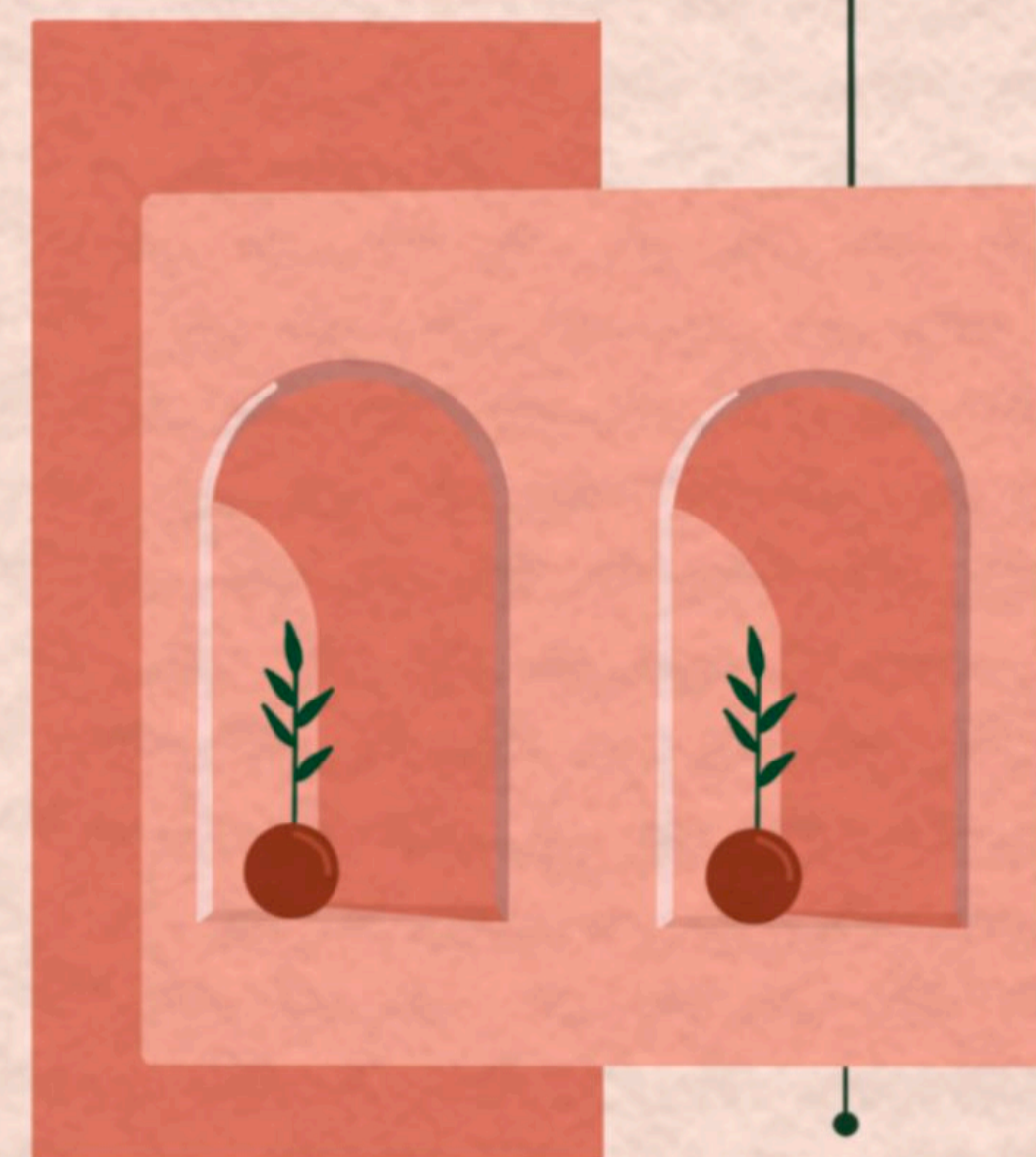
REFLECTION

Reflection continues the patterns and rhythm, creating a sense of enduring and dreamlike space.



REPETITION

The simple curves and vertical lines of the building are echoed throughout the design. This rhythmic repetition evokes feelings of continuity and comfort.



Sligo Gaol Boutique Hotel & Spa

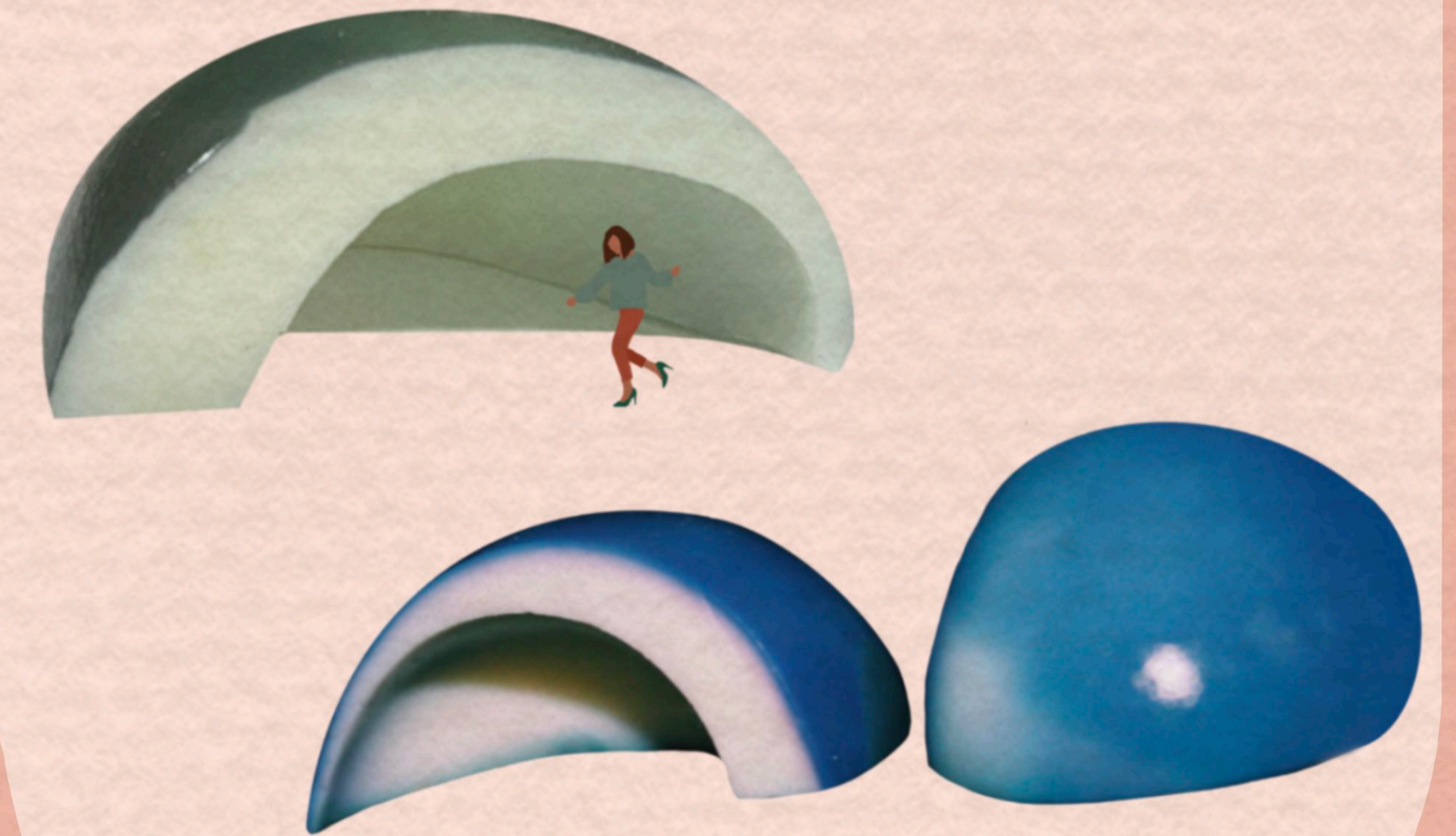


Design Statment

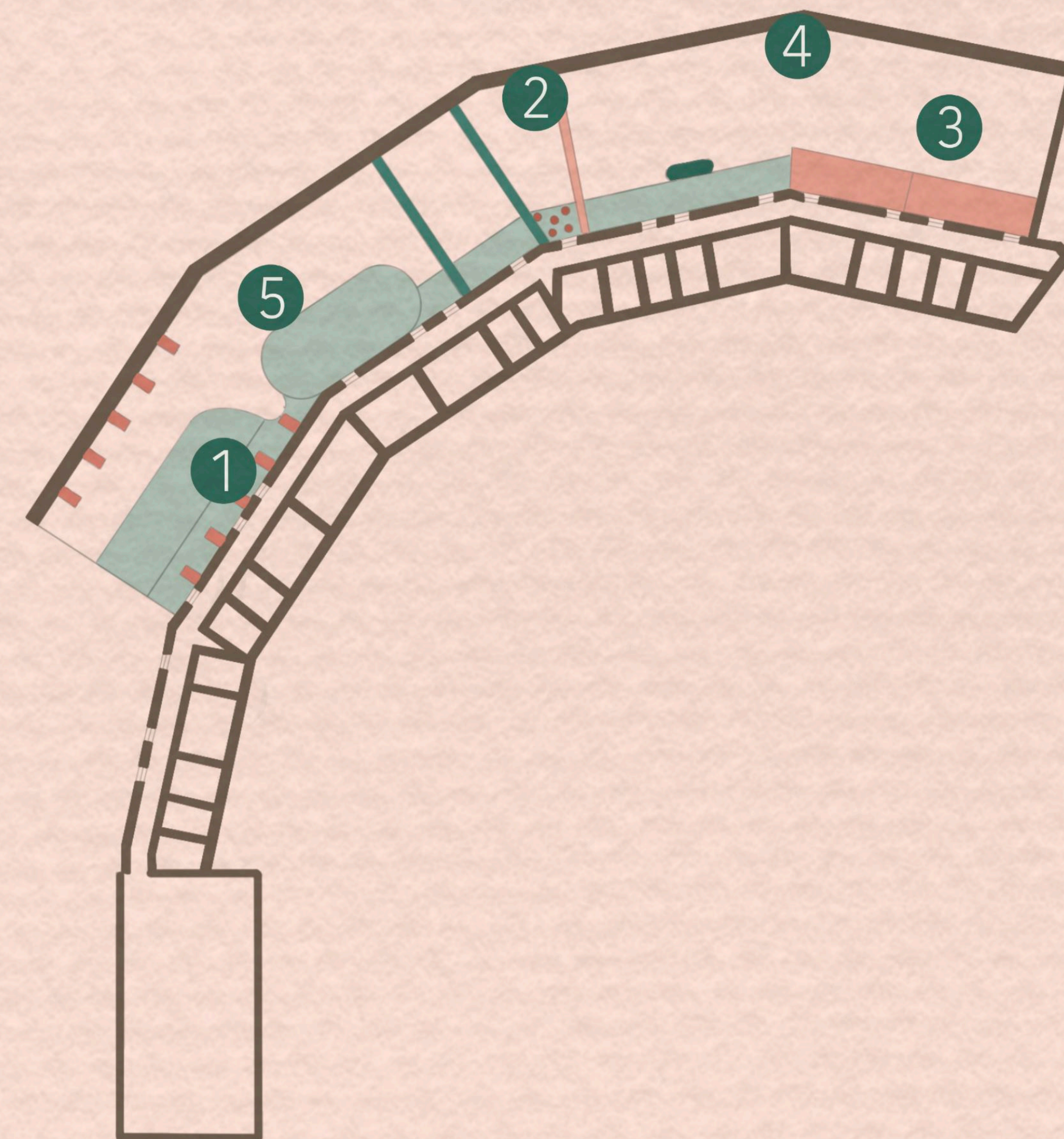
This boutique hotel in the former Sligo Jail, offers therapeutic treatments and counselling services. The experience of counselling is normalised in an informal and tranquil setting. A step by step flow of experiences is soothed by water and the peaceful rhythms of the arches that run throughout the building. In this informal flow of experiences and space, visitors are unaware of who is having a counseling session and who is just having a cup of coffee with a friend. The design offers renewal for both its visitors and the existing gaol building, echoing and celebrating its forms.

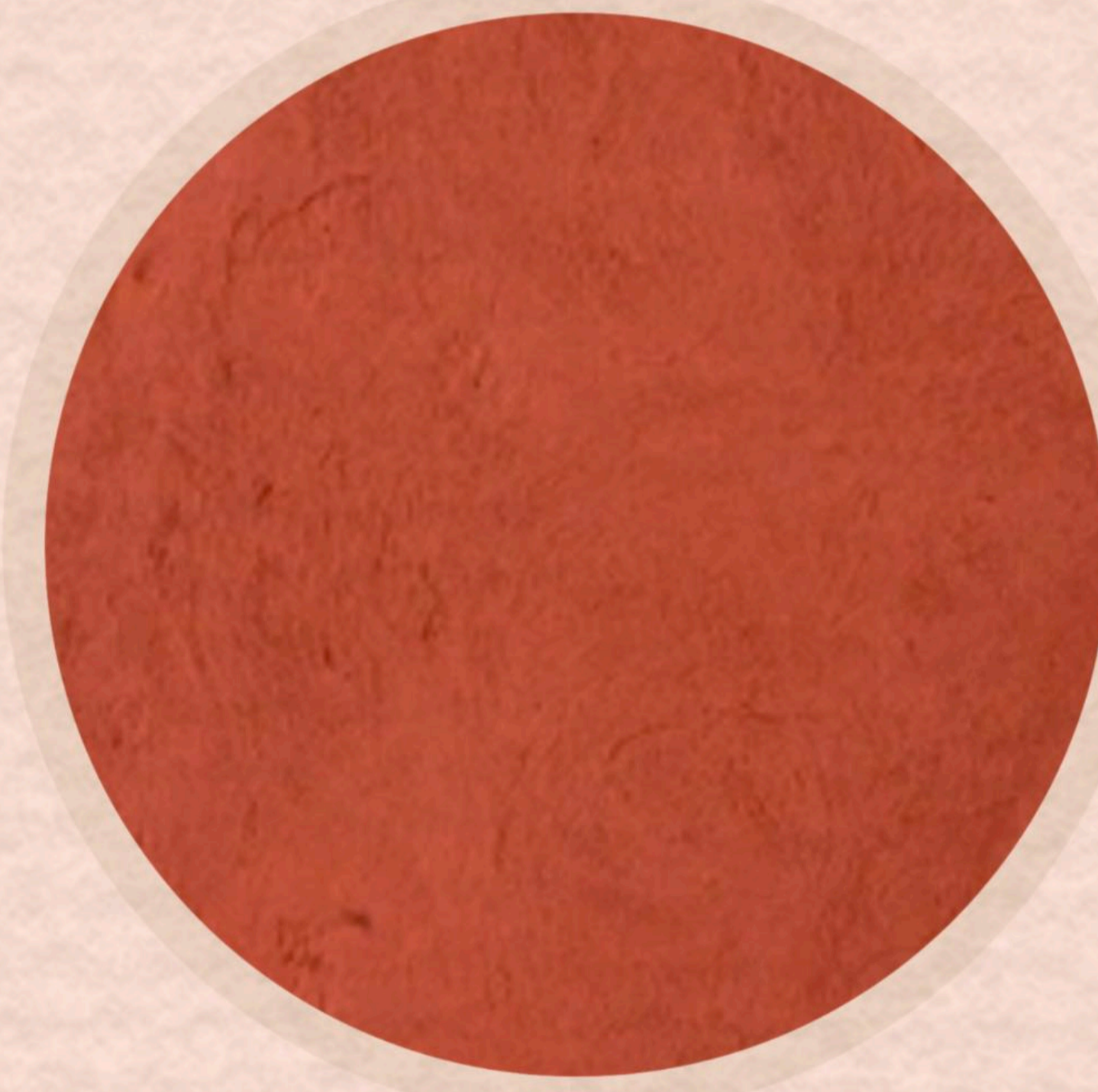
The design evolves from a series of vignettes, exploratory moments that evoke feelings of dreamlike continuity, softness, and comfort. Natural and grainy textures soften the simple, almost flat, shapes and colours of the space. The arched forms of the existing building are echoed and layered using perspective, placement, oblique and inverted reiterations, reflections, shadows, and contrasts in intimacy and vastness; to create a space which is simply inhabited, intimate but vast, gentle and dreamlike.

Touching the dyed eggs, very matte and soft, highlights texture as a means for achieving softness in very simple spaces. Cut views suggest possibilities provided by shadows and oblique forms.



KEY SPACES





The soft curved forms and materials in the design evoke the forms and materials of earth and the female body. Like the terracotta female figurines excavated in excavations of Mohenjo-daro, Pakistan (3000-1500BC), the textures and colours of the design are natural, matte, warm, timeless and comforting.



Irish linen is a natural and sustainable and biodegradable product creating little or no waste materials during production. Both its origins in the earth and its matte texture align with the soft grainy and earthy qualities of the overall design.

