



The Journey To the End.

By Jackson WU

Date: 07/06/2026

Individual work

We all avoid a part of ourselves we would rather not face. Jung called facing this hidden part individuation: not resolving what we suppress, but living alongside it. The project scales this to the city, where death is the most avoided subject. On a Peckham site short of burial land, it develops along two parallel lines: a functional one — turning cremated remains into soil for plants dispersed across the city; and a conceptual one — a spatial sequence following Jung's four stages of individuation. Its innovation lies in the process: a psychological framework and a material cycle developed in parallel.



1. The screen

The outer layer is the screen. Most of us now meet death as information: a message, a photograph, a post. We see the image of it without being in the room. This is the furthest we can stand from the fact, and the first layer to remove.



2. The surface

Underneath the screen is the finish. Even when death is dealt with in person, it is dressed up — kept calm, tasteful and easy to look at. The same thing happens to this building, rented out for its good-looking decay. Appearance is a layer too.



3. The words

Below the surface is language. We rename death so we do not have to say it: "passing", "at rest", "celebration of life". The soft words put distance between us and what happened. Here they are crossed out. The plain words stay: death, body, ash.



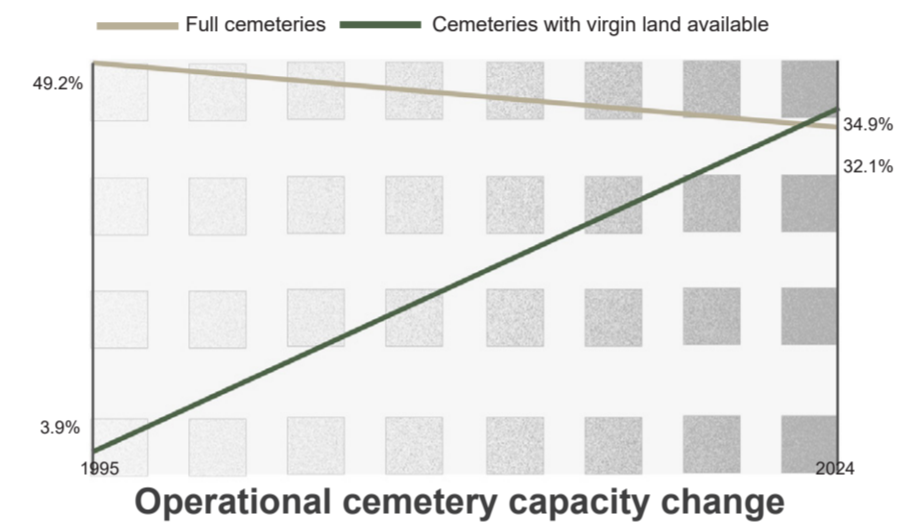
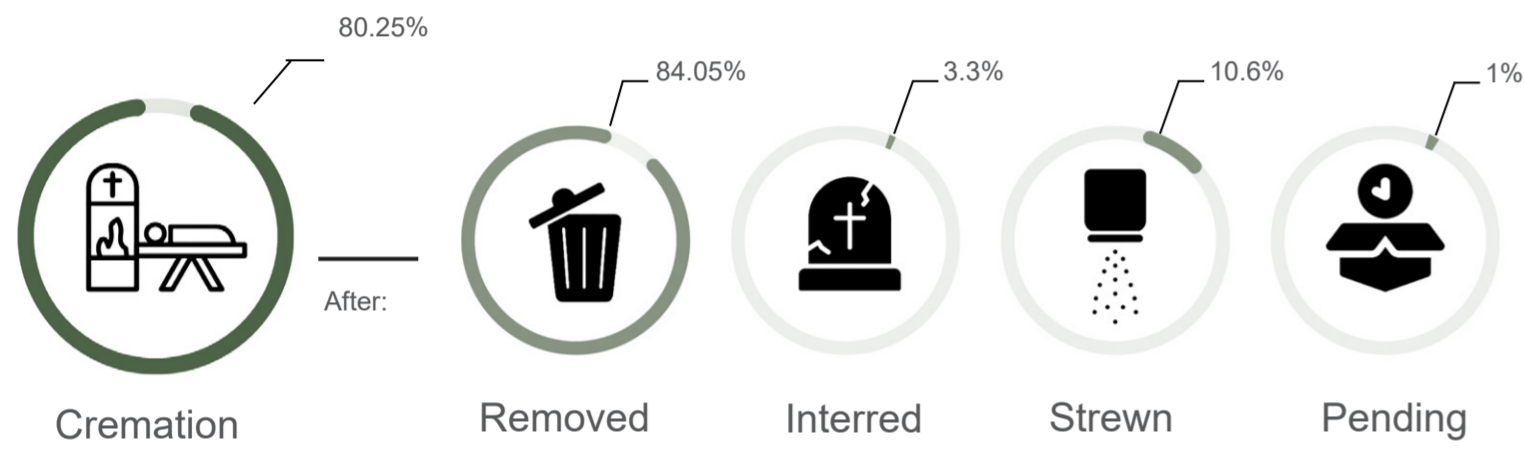
4. The wall

The last layer is physical distance. We move death to the edge of the city, behind plain walls, into cemeteries and crematoria most people never visit. This began as a real health measure in the nineteenth century. This is the layer the building removes.

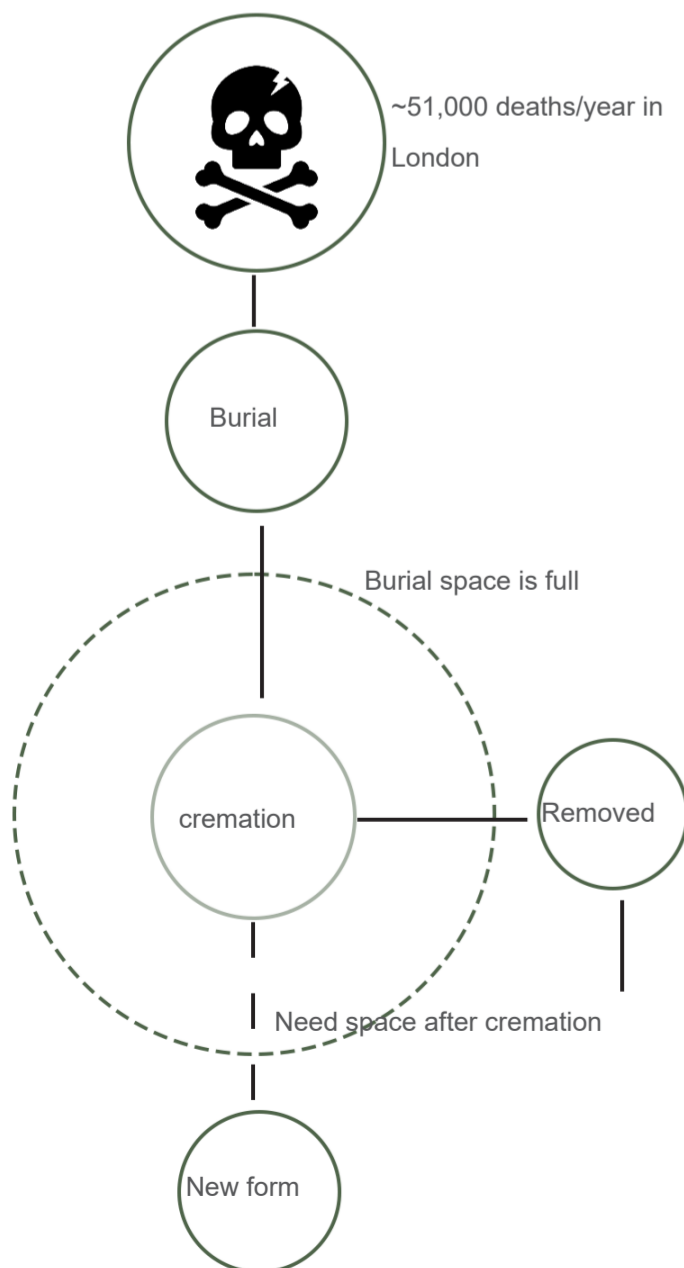


5. What is left

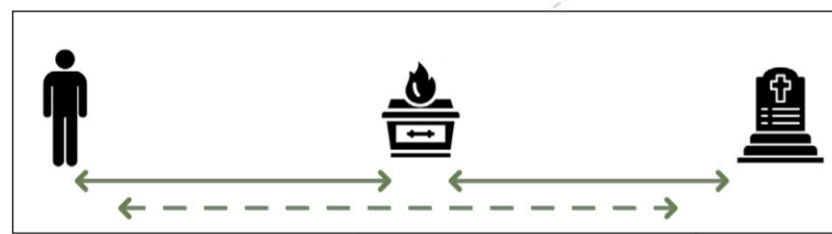
With the four layers gone, what is left: ash mixed into soil. It cannot be put on a screen. It is not shown here as beautiful or sad, only as the fact the other four layers were built to avoid. The thing the city pushed to its edge is brought back to its centre.



Post-death pathway funnel

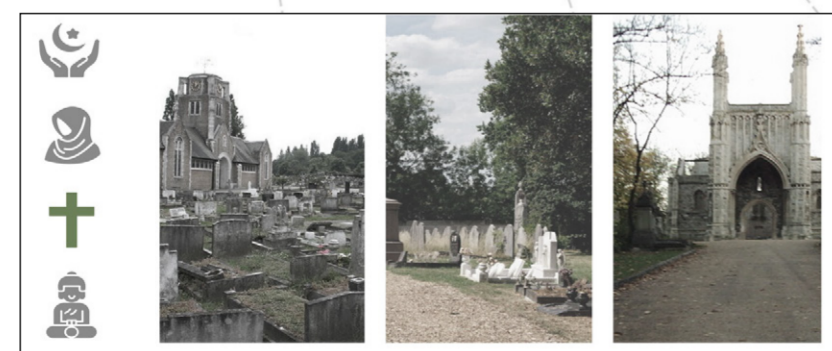


Site issue 1: distance



Existing cemeteries and cremation facilities in Peckham are located far from the centre. Although Southwark provides these facilities operate at a borough scale, displacing burial from Peckham's daily life.

Site issue 2: Multiple religions

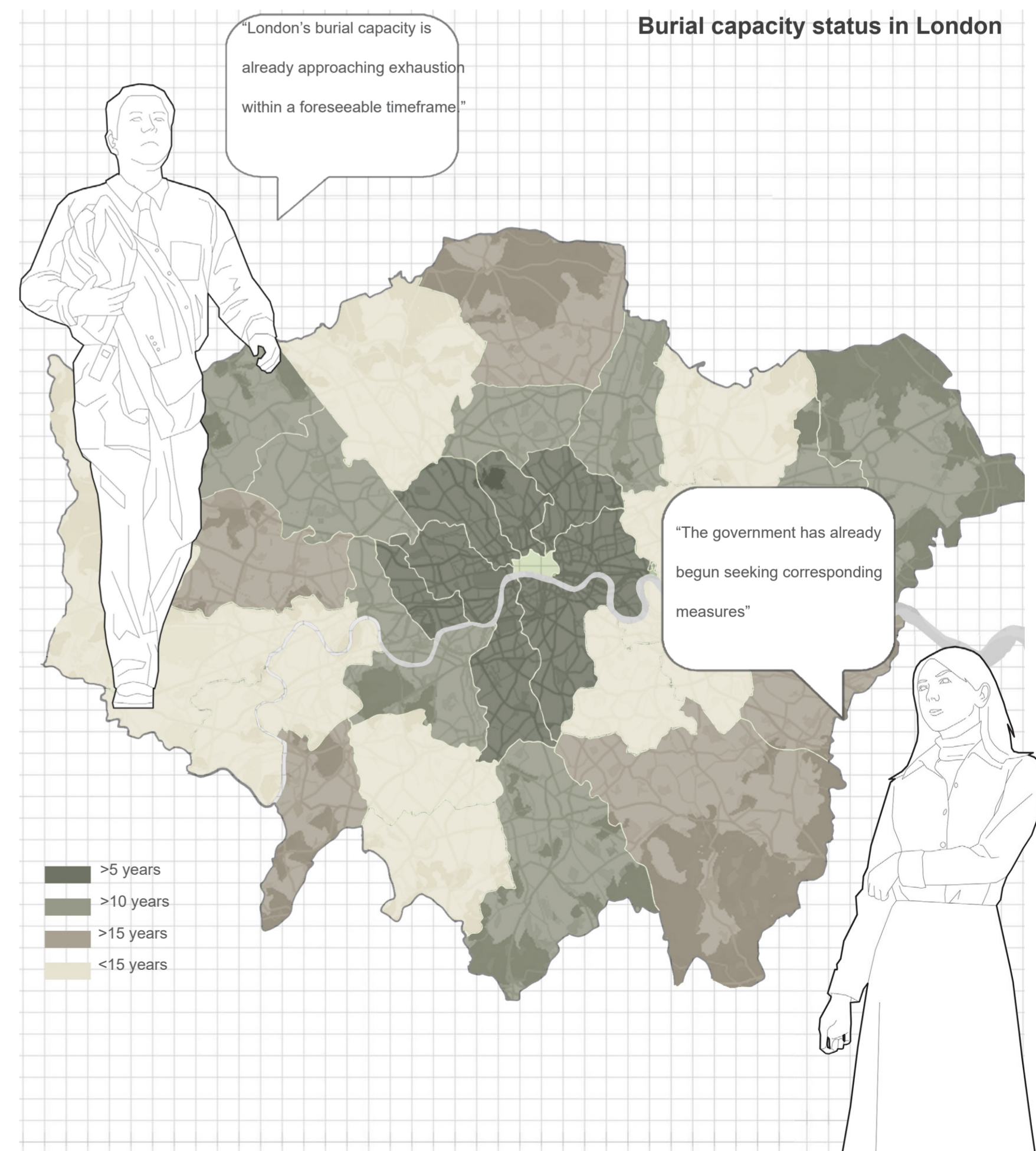


Existing cemeteries serving Peckham are largely shaped by Christian burial traditions, leaving them ill-suited to the needs of a culturally and religiously diverse community.

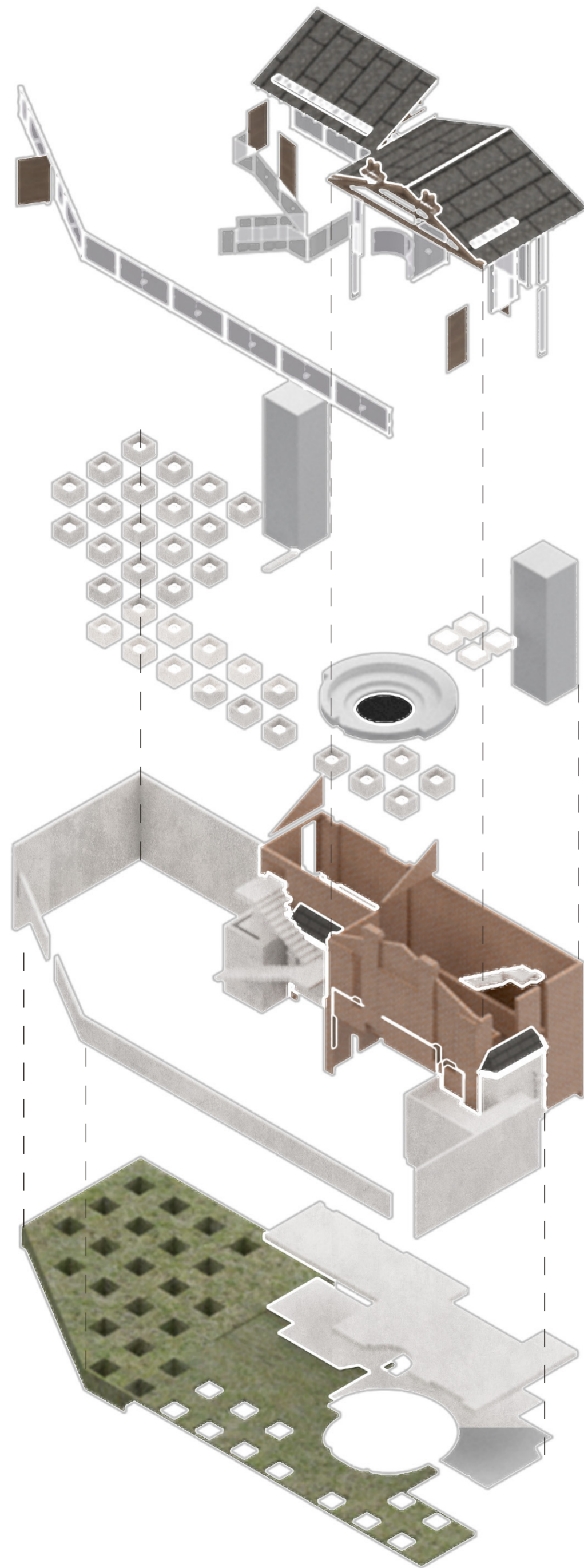
Site issue 3: Running out of Capacity



Burial capacity status in London

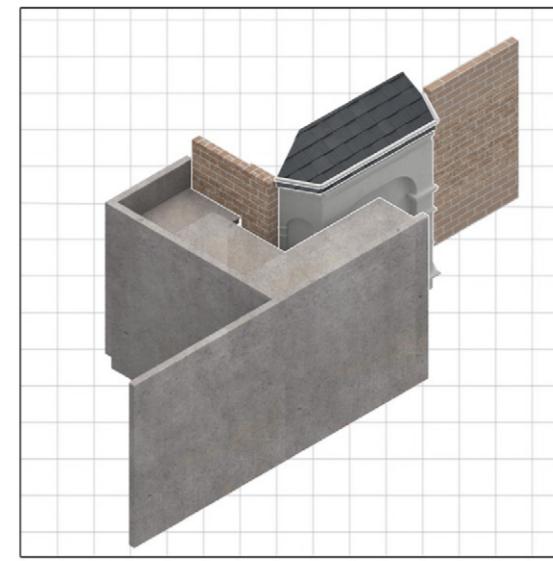


Exploded diagram:



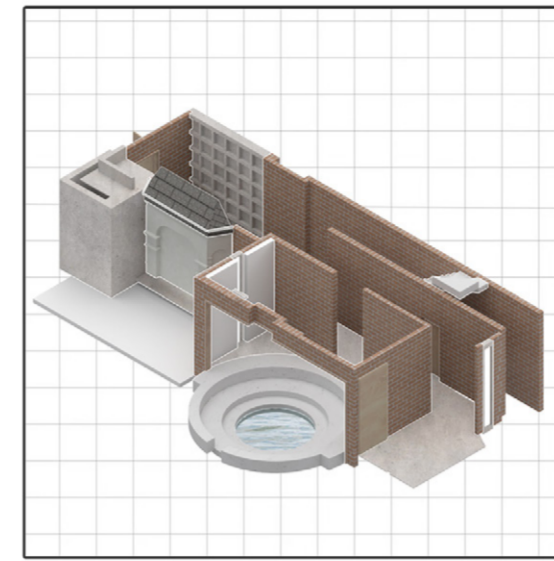
Stages of individuation:

Stage 1 - Recongnition



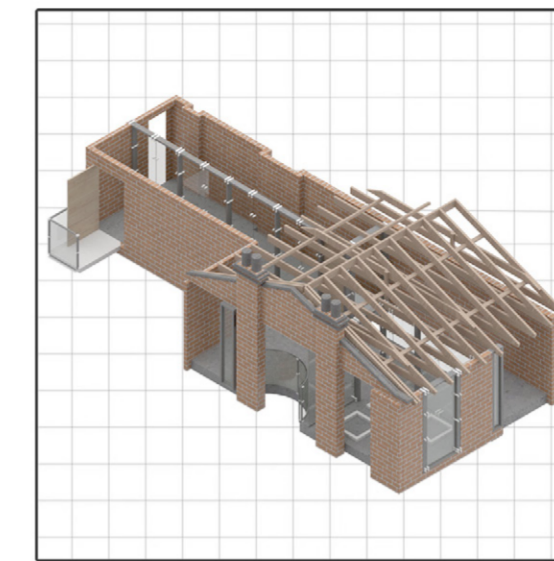
Recognition is the stage at the threshold of the building. The body is brought to register the crossing — through compression and turning — before anything is asked of the visitor.

Stage 2 - Confrontation



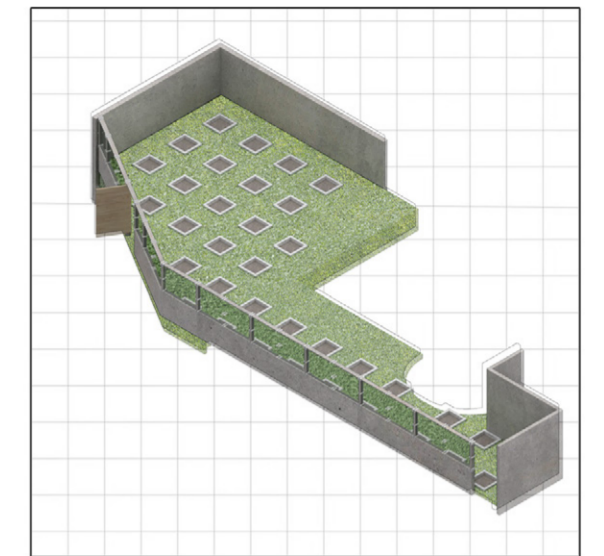
Confrontation is the stage where the visitor is placed in unavoidable contact with the body or the ashes. Every softening apparatus a chapel or funeral home would supply has been removed.

Stage 3 - Wandering



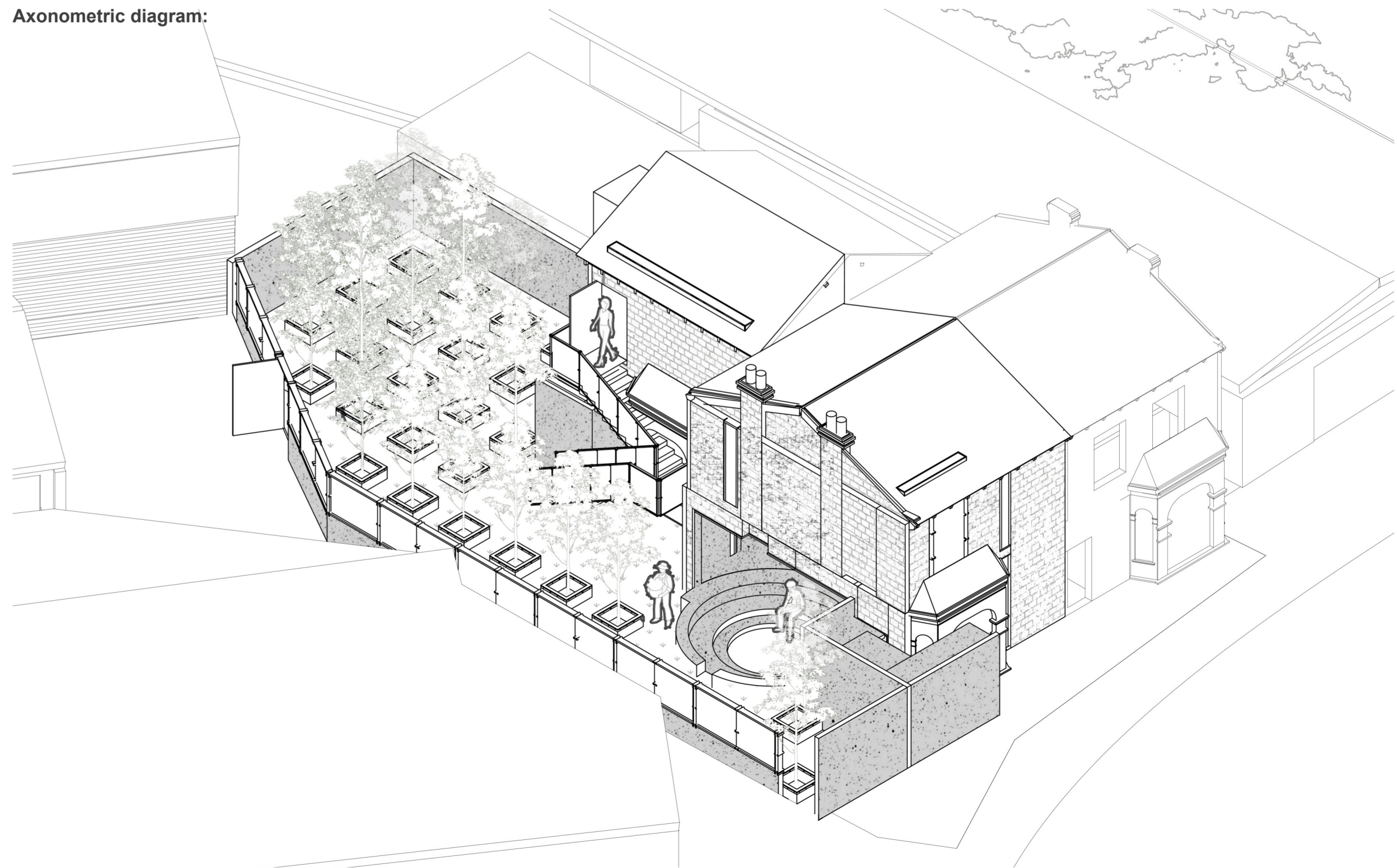
Wandering is the stage where the visitor sees the death from multiple positions — through the void from above, behind glass as matter being processed, and as the first growth in cultivation — without any of these resolving.

Stage 4 - Integration



Integration is the stage where the building's programme crosses its own boundary. The new material withdraws, and the matter from the death is prepared to be moved out into the city.

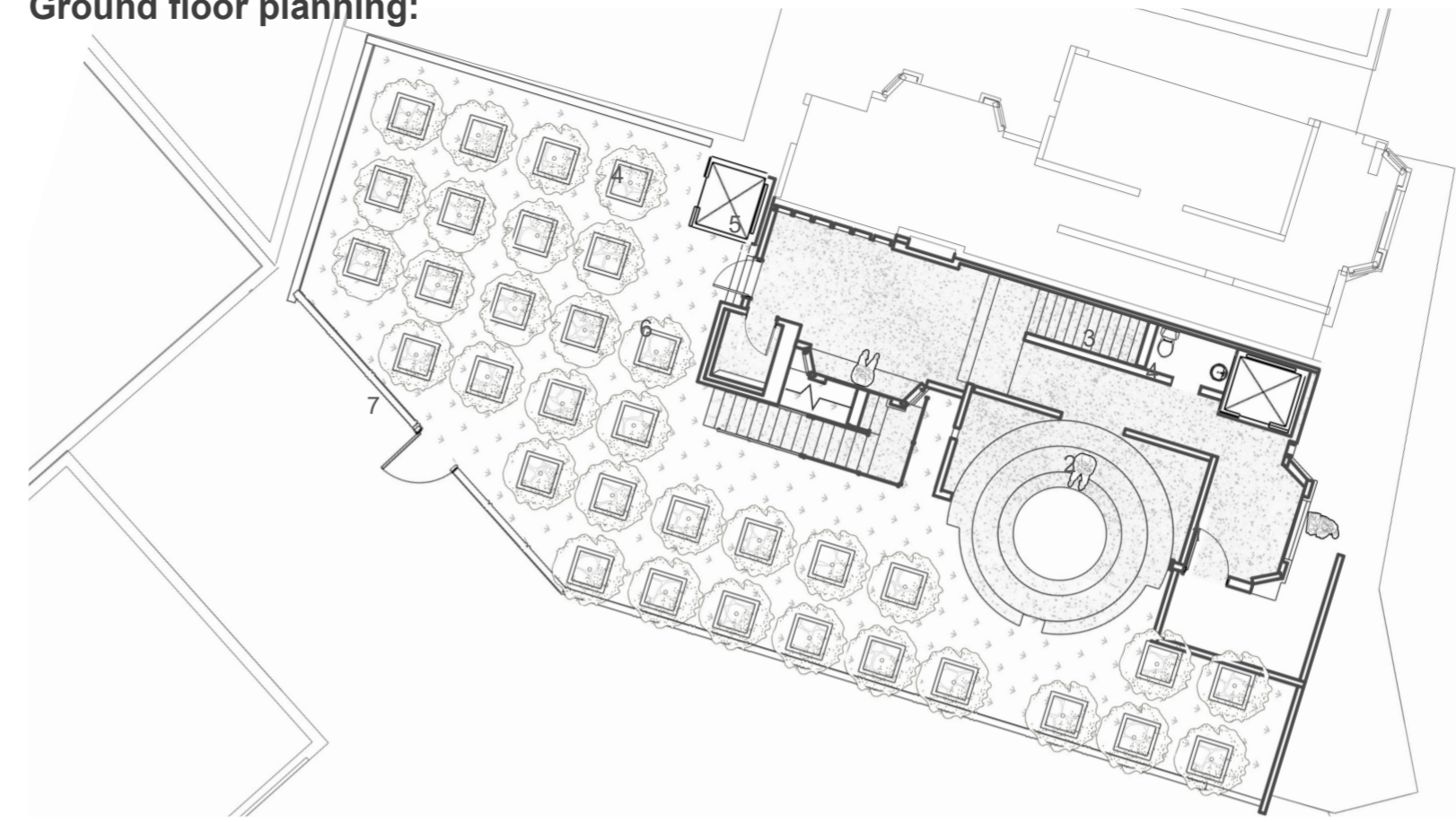
Axonometric diagram:



Axonometric diagram with materials:

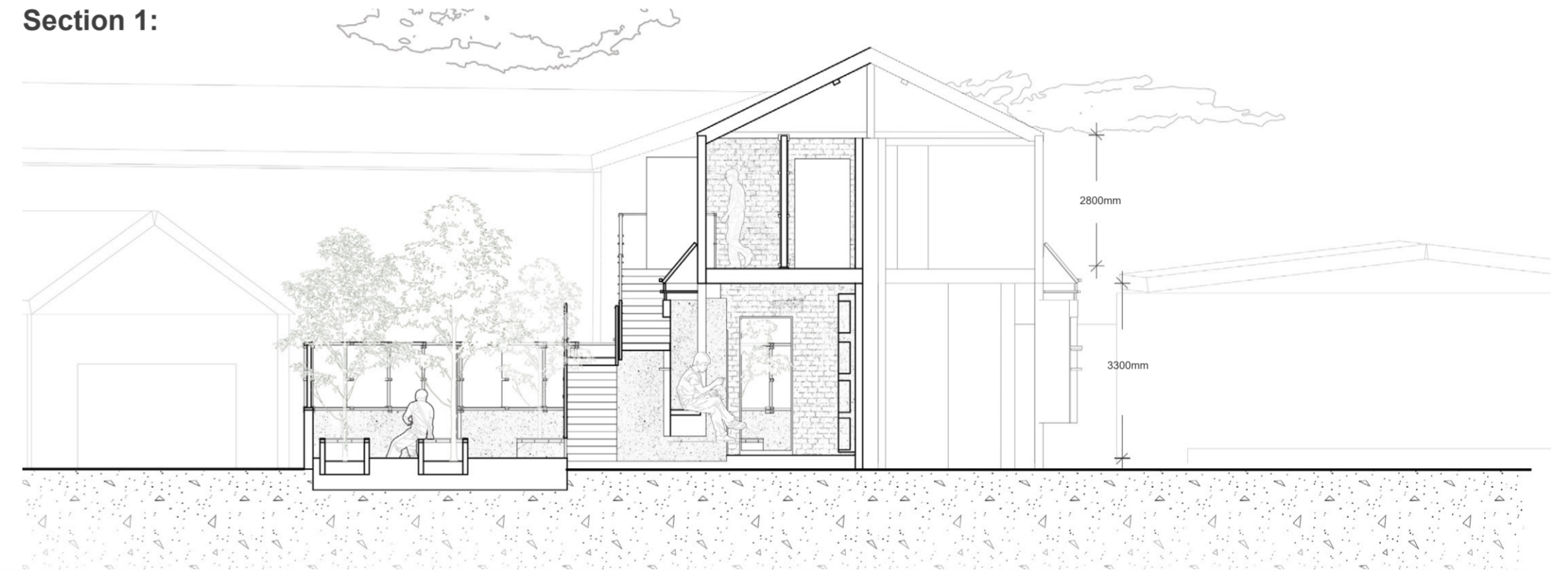


Ground floor planning:

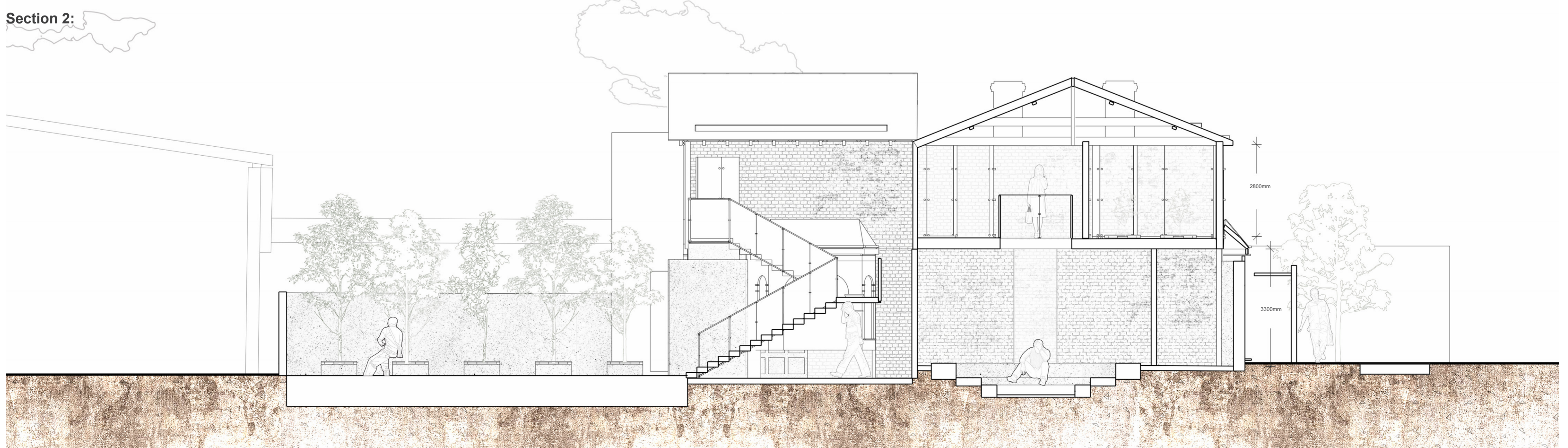


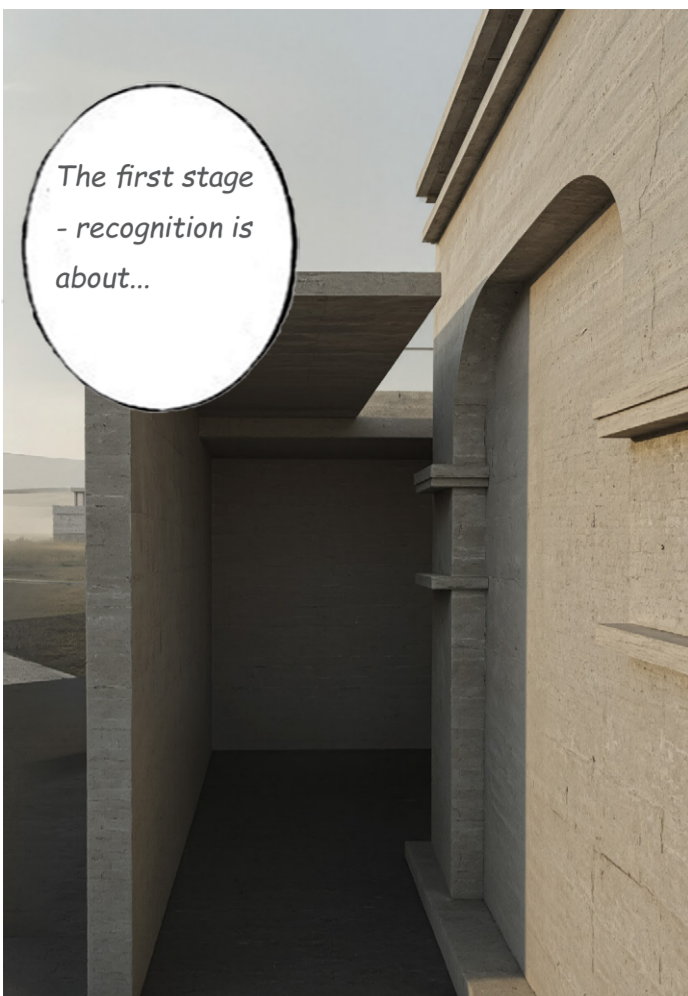
- 1. Entrance.
- 2. Meditation hall.
- 3. Toilet.
- 4. Lift.
- 5. Ashes storage.
- 6. Personal meditation space.
- 7. garden.

Section 1:



Section 2:





The first stage
- recognition is
about...



ENTERING
a new space
(to meet the
hidden self)



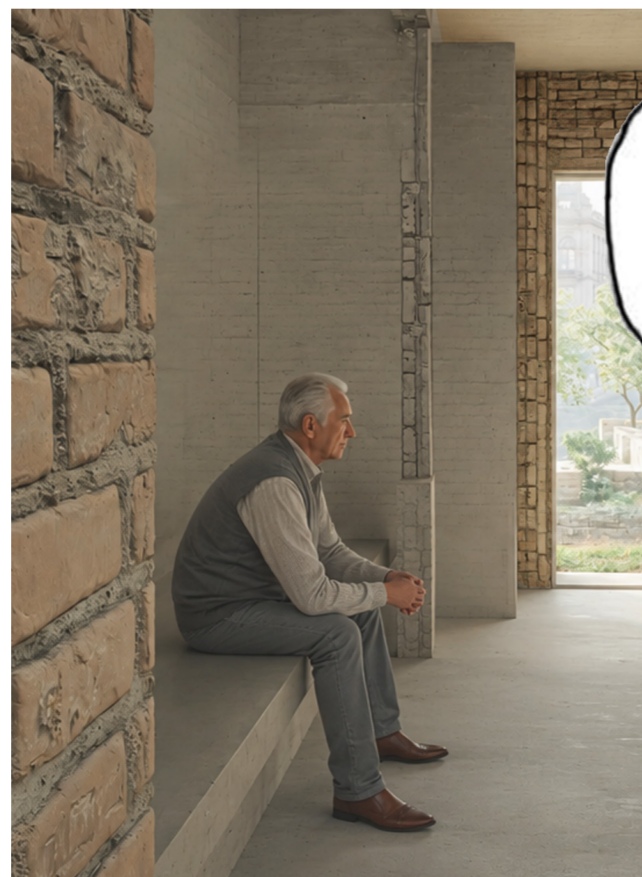
Wandering
between
two stages,
confrontation
and..



Confrontation
to meet the
hidden self.



Integration.



'I need this
space to
meditate...'



Try to live
with hidden
part.