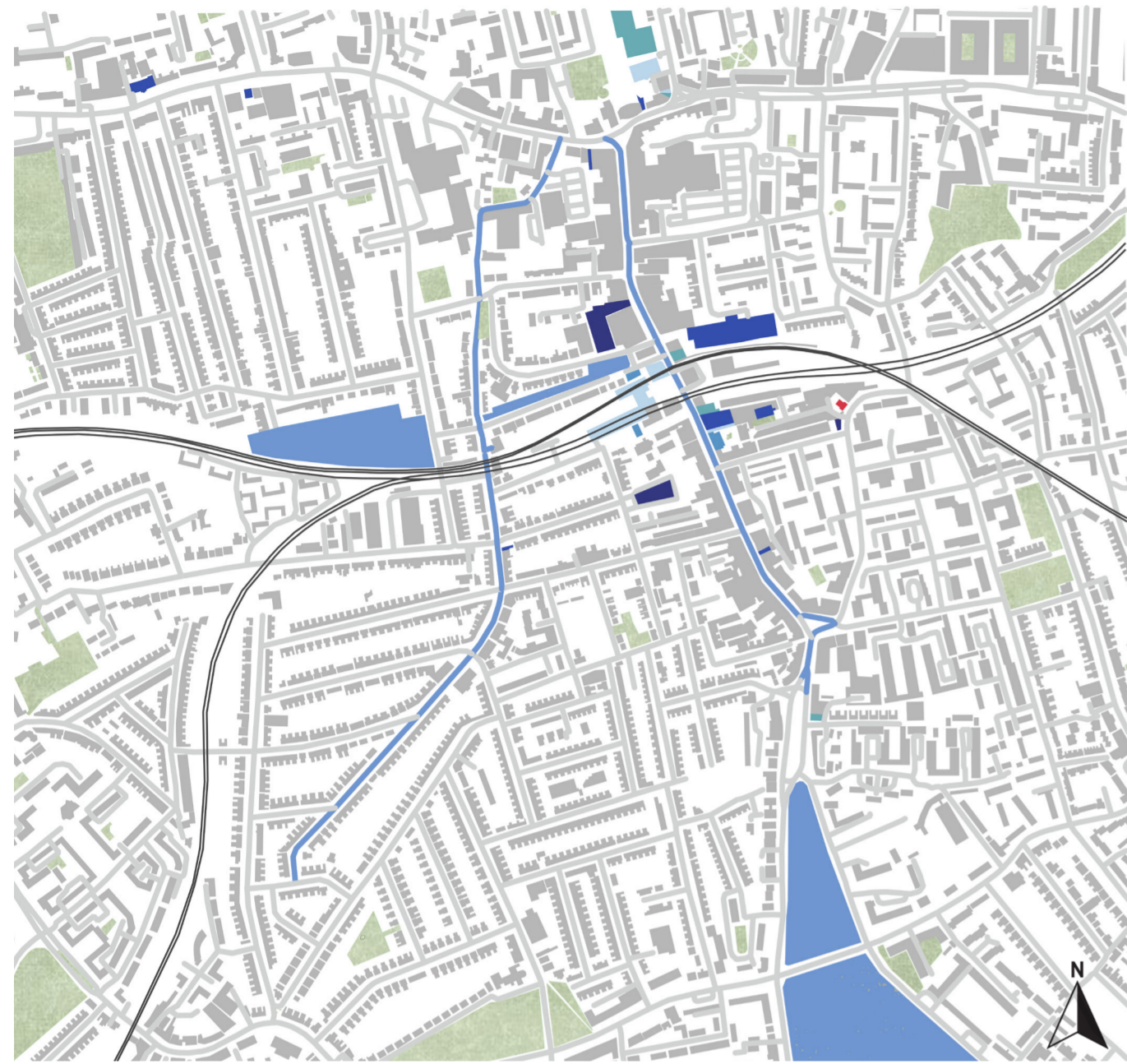


# Beyond the Gaze: A Haptic Interface for Narrative Reconstruction in Peckham



- cultural institutions
- heritage sites
- public realm hotspots
- creative production spaces
- neighbourhood markets
- safehouse2
- social & food icons



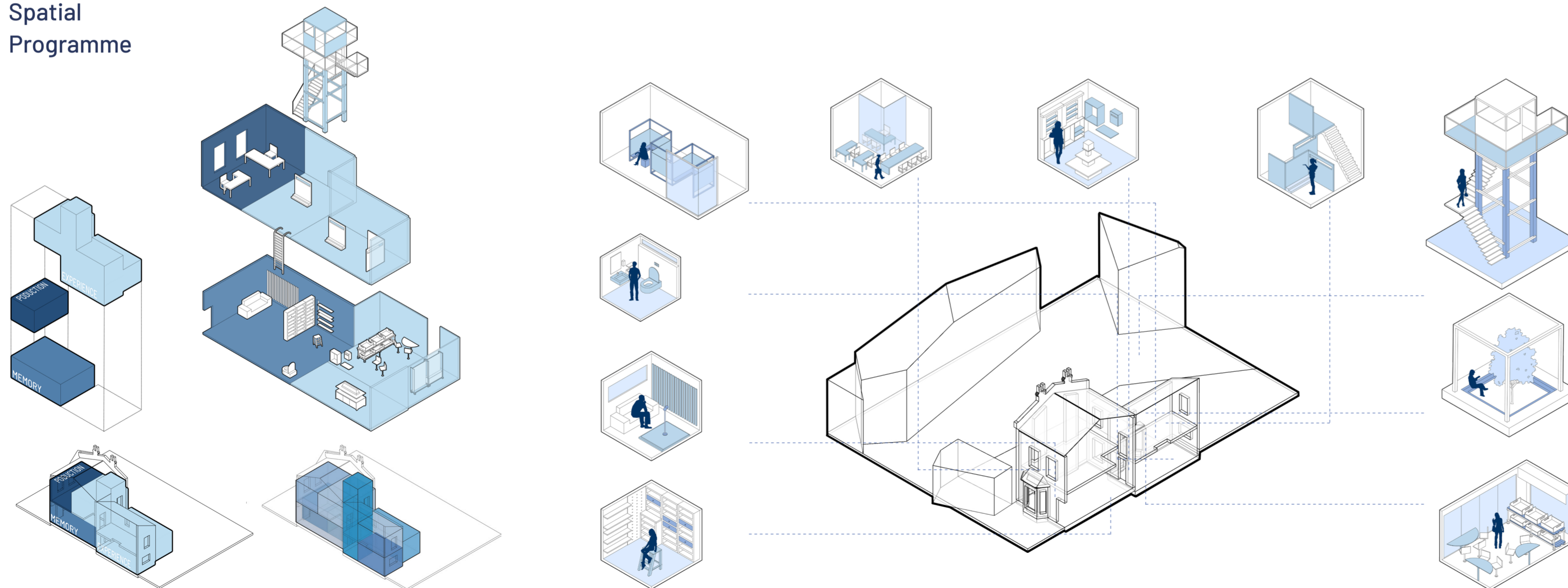
This composite map visualises the overall spatial density of cultural, historical, creative, public-space and social-icon locations across Peckham. By layering all categories together, the map reveals clear clusters of urban attraction, especially around Rye Lane, Peckham Rye Station, Copeland Park and Bellenden Road.

The blue intensity field highlights where multiple types of sites overlap, indicating zones with strong cultural visibility and everyday urban activity. This density pattern serves as a baseline for understanding how Peckham's cultural ecosystem concentrates, disperses and shapes experience in the neighbourhood.

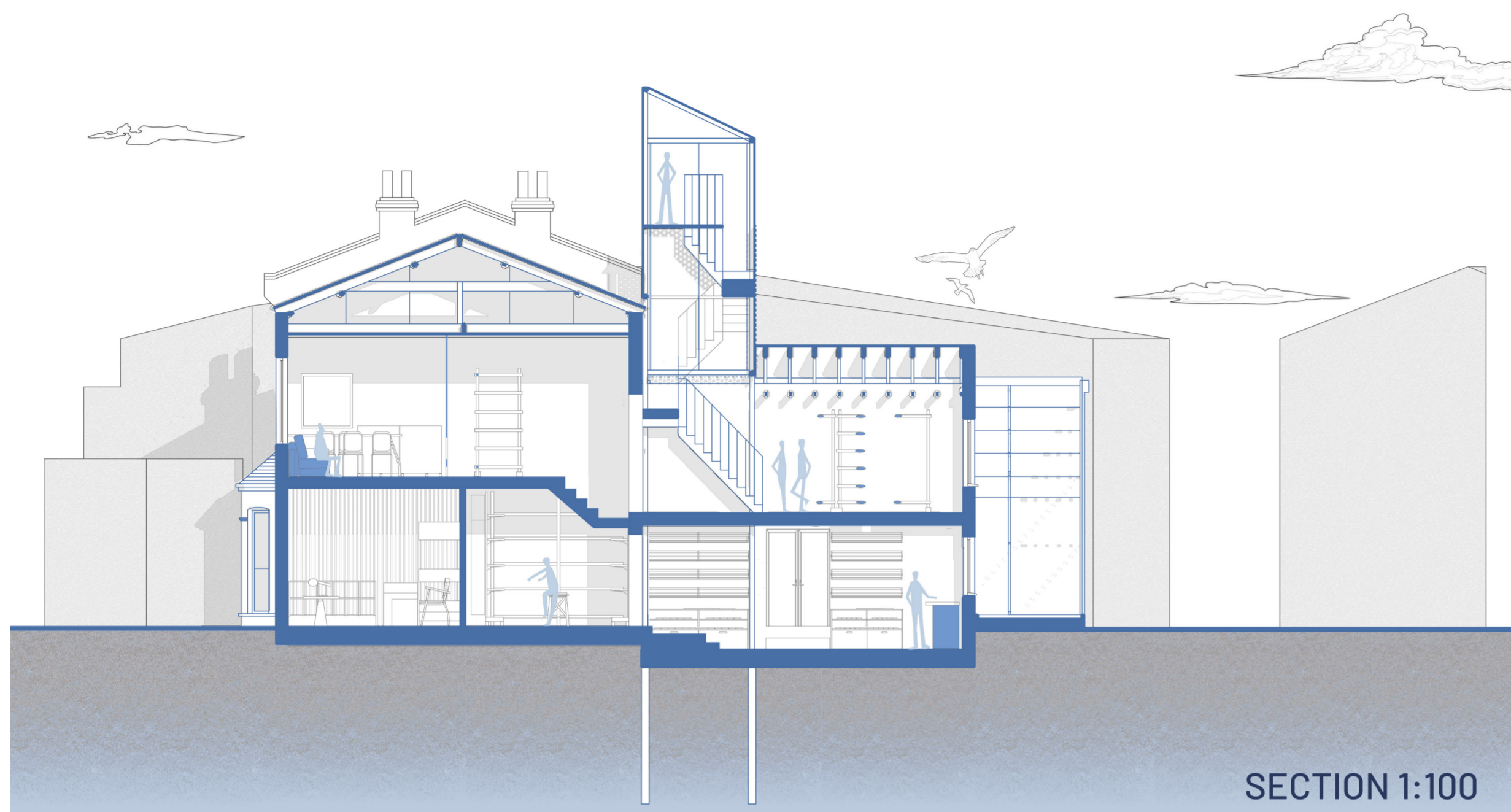


Peckham Walking Route

## Spatial Programme



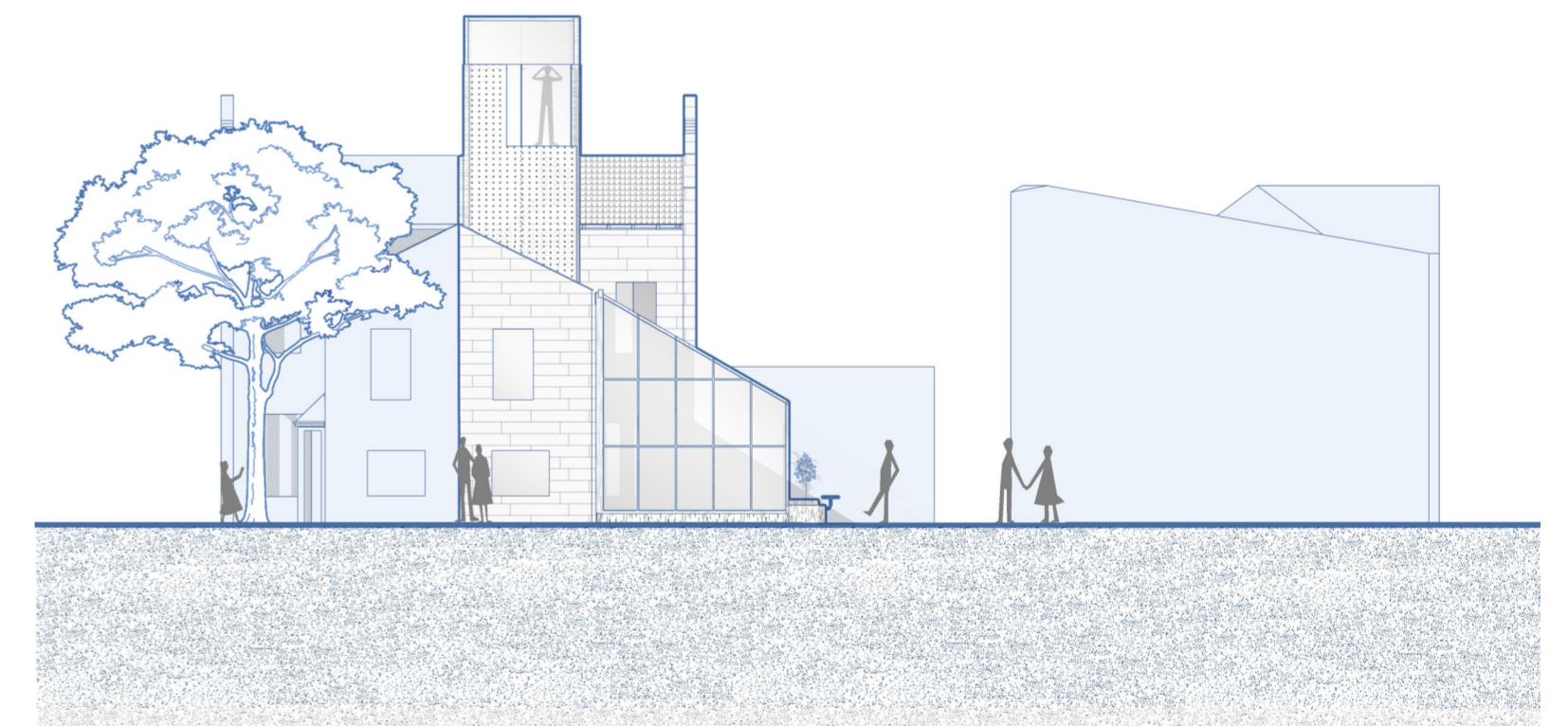
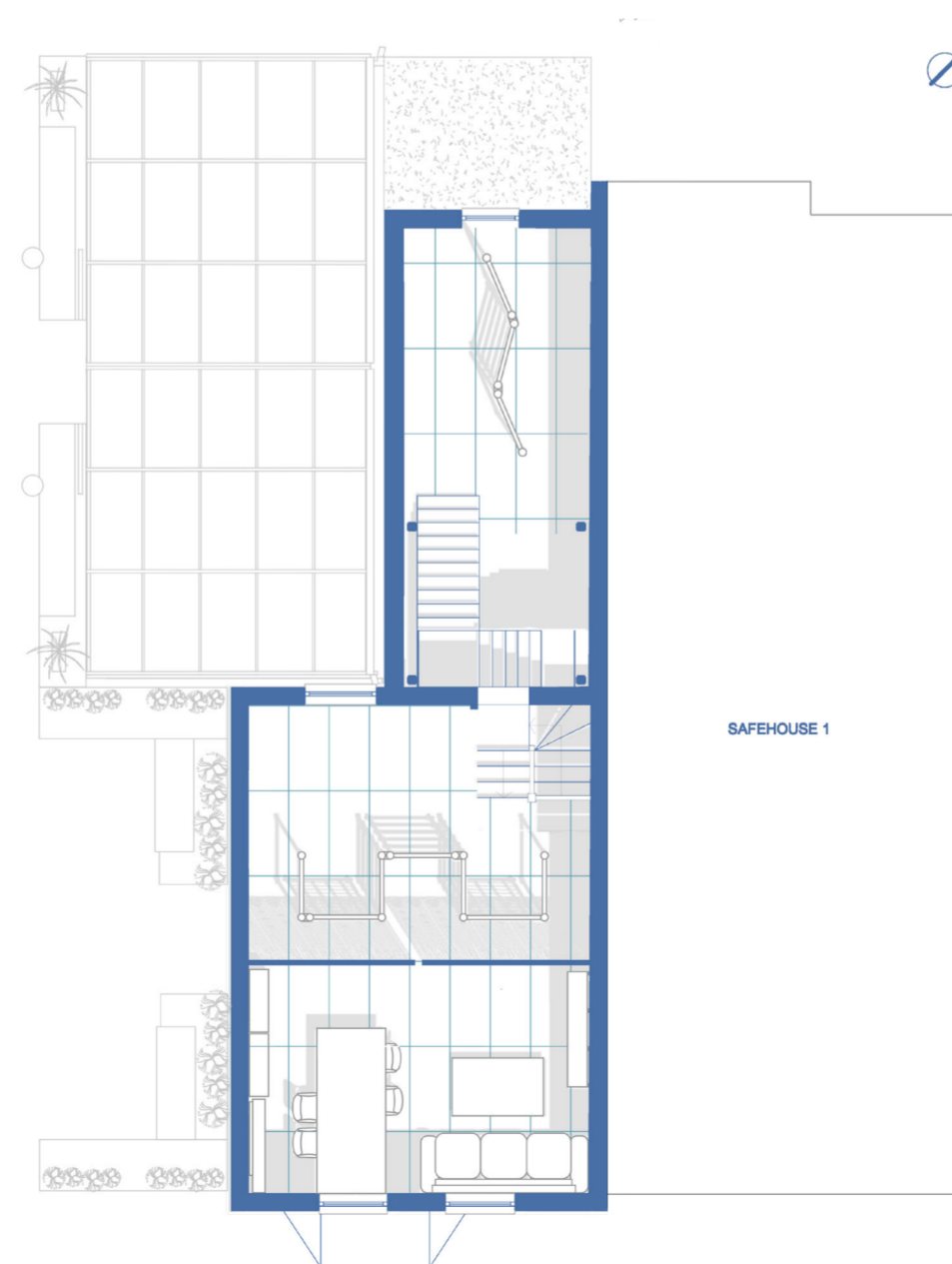
Building on my critique of the digital gaze and the society of the spectacle, I reconfigured Safehouse 2 into a hybrid Exhibition and Tourism Centre that functions as a narrative interface in the heart of Peckham. My goal was to move beyond the superficiality of visual consumption and establish a space where architectural engagement is rooted in ontological depth and genuine community participation. I imagined this environment as a symbiotic ecosystem shared by three core groups: contributors, facilitators, and participants. For the local residents who act as contributors, I designed the Memory Sanctuary and Community Archive as spaces to record oral histories and store artifacts of emotional significance, fostering a sense of inclusion and belonging. These fragmented testimonies are then translated by facilitators into a coherent narrative for participants—such as international tourists and students—allowing them to engage with the authentic cultural texture of the neighborhood rather than a mediated image.



SECTION 1:100

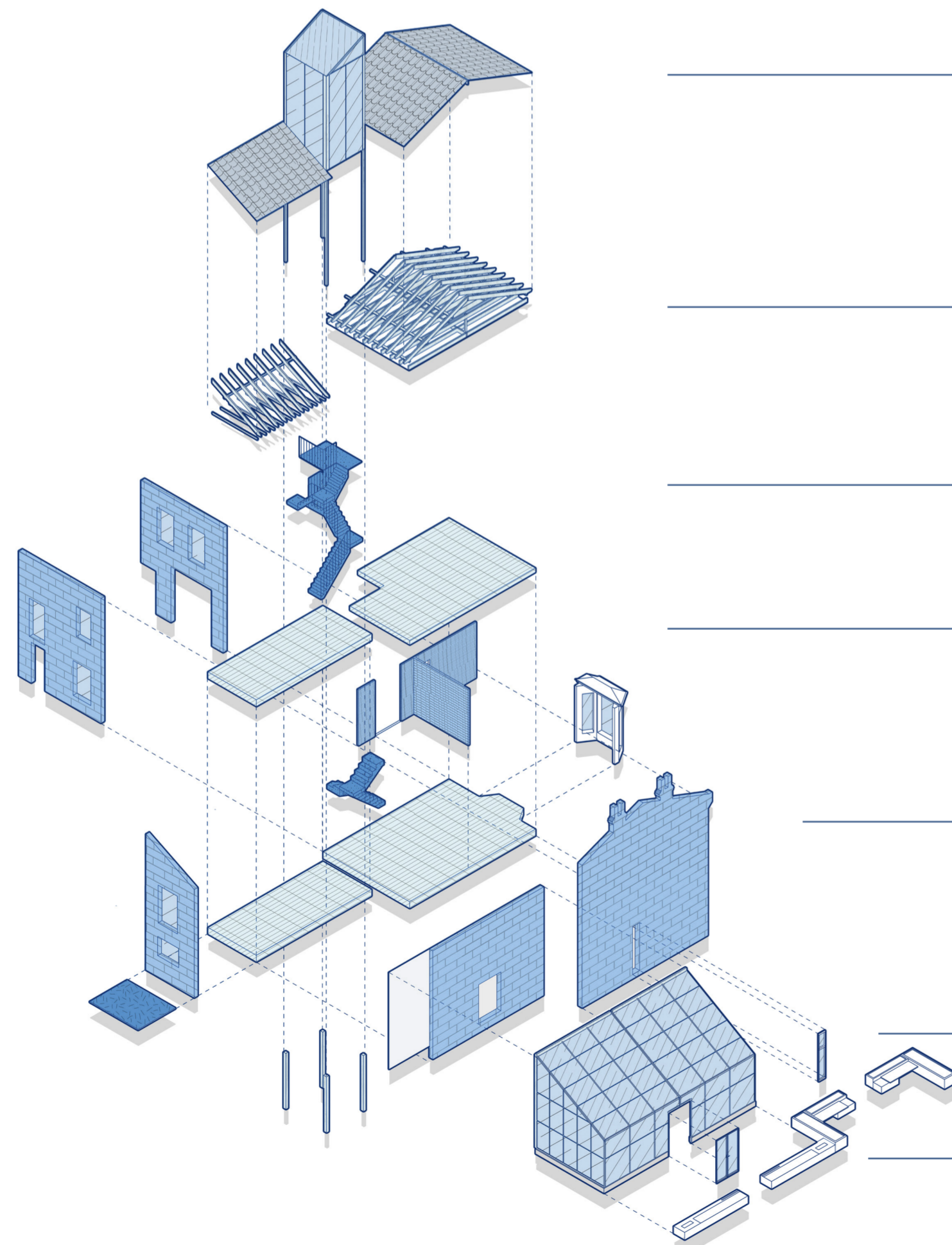


PLAN 1:100



My architectural response begins with a glass box extension that serves as the primary entrance and a threshold for a wider walking route. This volume houses a social cafe designed to promote economic resilience, where sourcing produce directly from local markets provides tangible feedback to the community. To create a visual dialogue with the surrounding urban topography, I designed a viewing tower of glass and steel mesh that extends from the existing internal staircase. By choosing a low-intervention strategy that reinforces rather than replaces the historic fabric, I wanted to create a vantage point that overlooks Peckham while ensuring the new roof geometry echoes the original pitched form of the site, respecting the principles of both adaptive reuse and climate justice.

Internally, I translated the visual logic of “hyper-accumulation” observed in local shops like Khan’s Bargains into the organizational language of the archival spaces. I articulated this through a strict privacy gradient, using permeable curtains to create flexible boundaries in public areas, while employing solid masonry walls to provide a sense of sanctuary for more intimate activities. Finally, the souvenir shop incorporates a physical postbox and a collection of postcards to encourage the tactile ritual of sending mail. This allows visitors to transform their experience into a tangible memento, directly translating my Unit 9 research into a meaningful social gesture. Ultimately, this approach aims to safeguard local narratives against the cultural erosion of gentrification, while encouraging a more responsible, slow-paced model of architectural consumption that exists beyond the screen.



**07 VIEWING TOWER**

glass enclosure  
perforated steel panel  
timber structure

**06 ROOF STRUCTURE**

natural Slate Roof  
timber rafters  
timber purlins

**05 VERTICAL CIRCULATION**

staircase  
landings  
guardrail

**04 FLOOR PLATES**

timber floor  
structural beams

**03 EXISTING BUILDING**

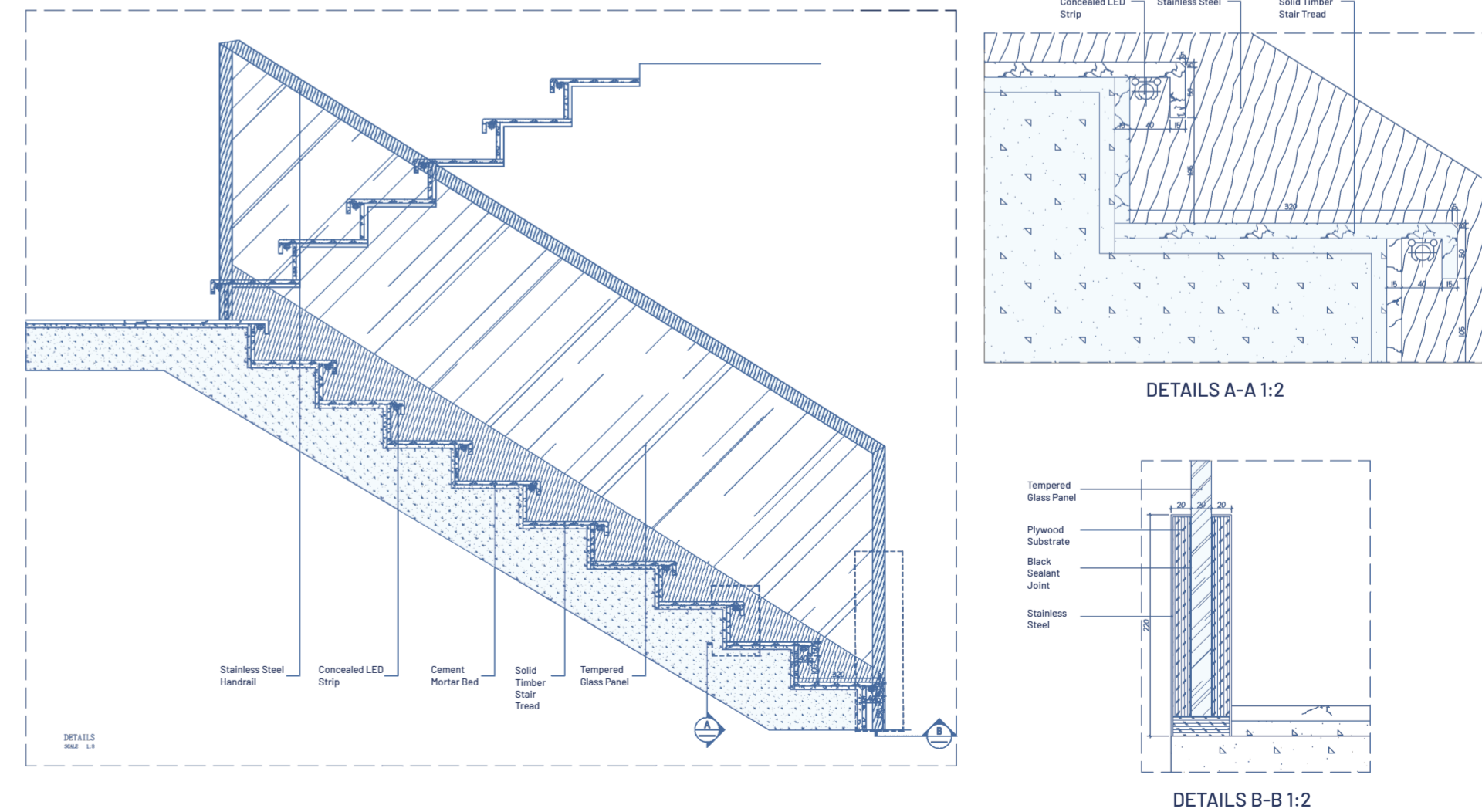
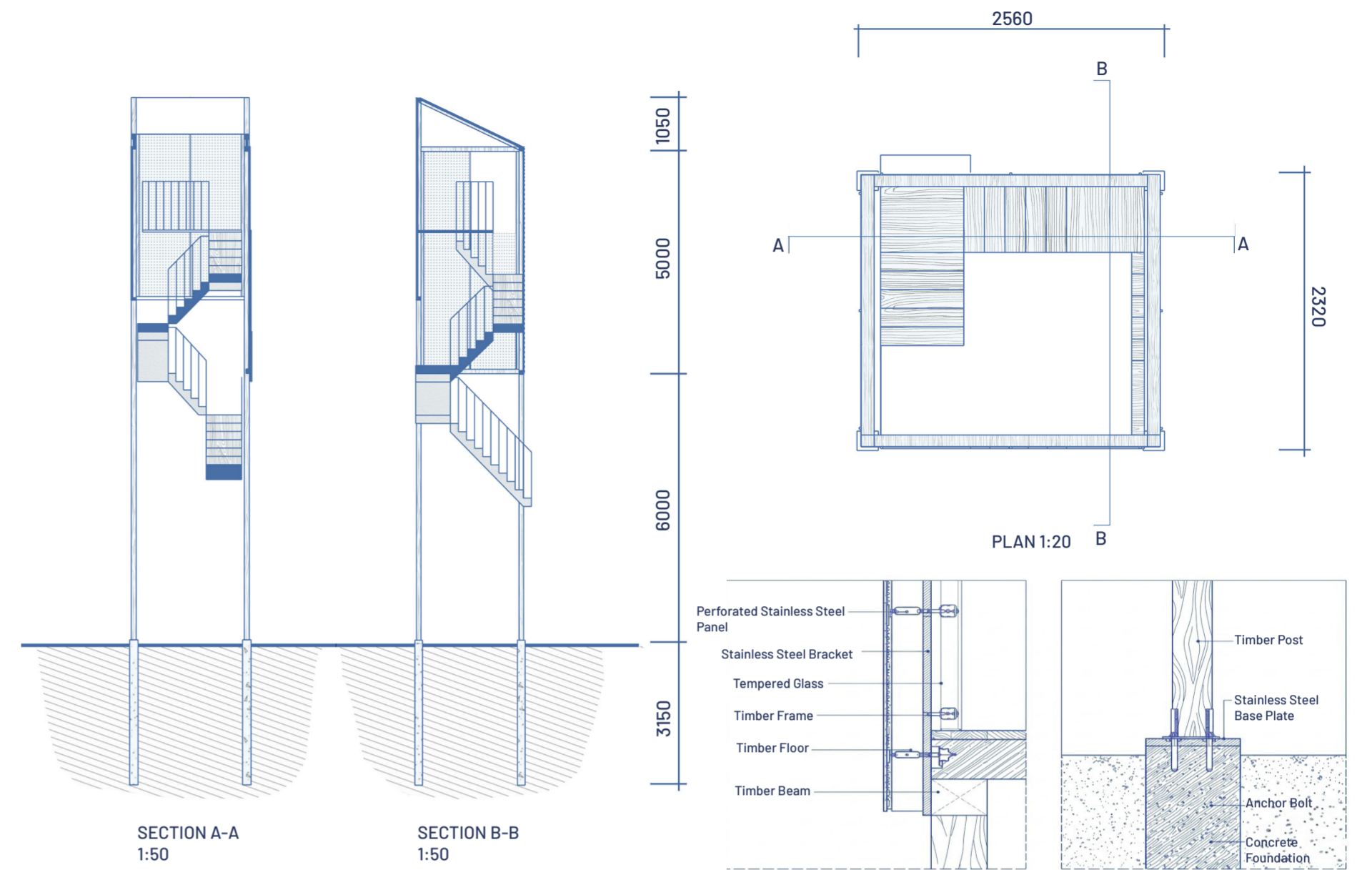
masonry walls  
existing openings  
brick structure

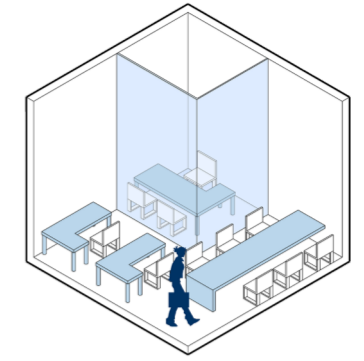
**02 GLASSHOUSE EXTENSION**

timber frame  
glass panels

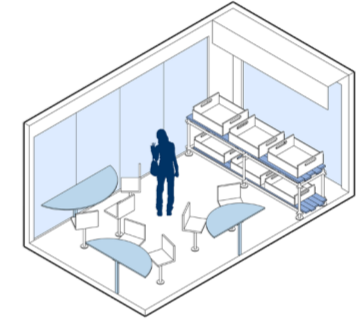
**01 FOUNDATION**

timber piles  
concrete slab

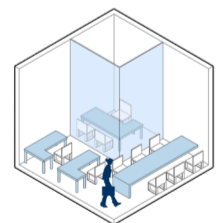




Curatorial Lab



Cafe



Curatorial Lab



Community Archive & Locker



Memory Sanctuary

