

ALEXANDRA SANTOS | OLD SESSION HOUSE PROJECT

SITE RESEARCH

Clerkenwell is an area in Central London that lies between the City of London's business district and the high-density residential boroughs of Islington and Hackney.

It's a residential and business area with a strong feeling of community and identity. The region is strategically located between King's Cross, Angel town centre, Shoreditch, the Barbican, and Holborn, as well as Farringdon Station, which provides quick access to the London Underground and main line National Rail. Clerkenwell Green, as well as Clerkenwell Road and St. John Street, are the area's historic centre, with many of the city's best art galleries, restaurants, bars, and pubs.

Clerkenwell was formerly London's industrial heart, and its remarkable warehouses have been transformed into trendy residences and modern creative offices. It draws a broad set of creative workers and employees looking for housing and conference facilities, including old warehouses, period buildings, converted offices, and contemporary new structures, because to its proximity to London's financial district and IT industry.

PROPOSAL

SINOPSIS

The COVID-19 pandemic has been shaping new ways of living and working, highlighting the importance of public's health and wellbeing. This raised more awareness about safety, productivity and comfort that lead to changes in the way workplaces are designed.

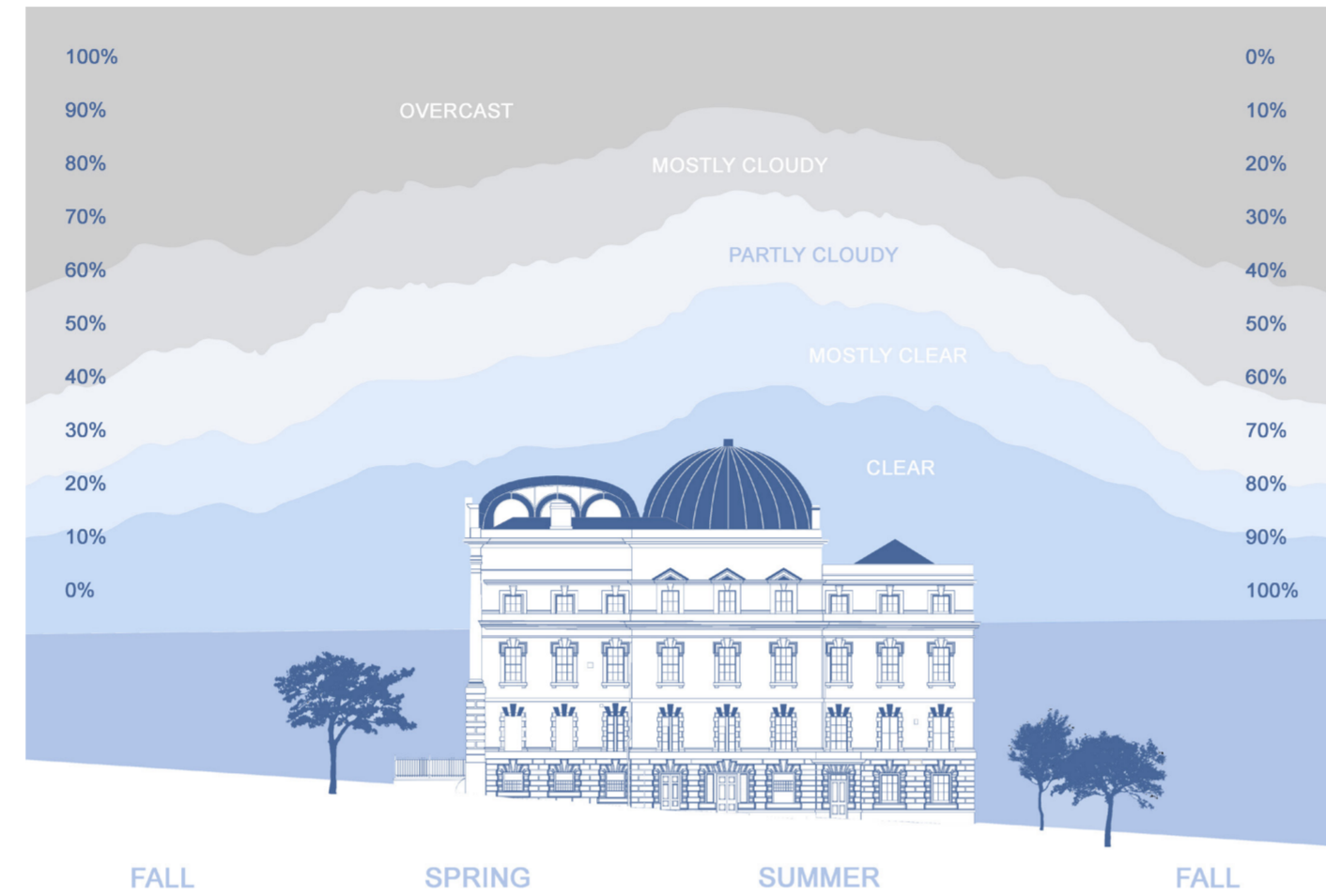
The main goal of this project is to provide a feeling of community and inclusion, encouraging social interaction to those using the space. The design is inspired by a city layout bringing the same dynamic inside the building and creating different spaces for interaction (from public to private). The office area aims to create the city landscape with different levels of "boxes" as the buildings and "streets" connecting them. It is composed by several private spaces where employees can "feel at home".

A combination of noise can provide the right amount of distraction to help boost concentration and creativity. As "Mother" is a creative company the workplaces include the coffee and open areas.

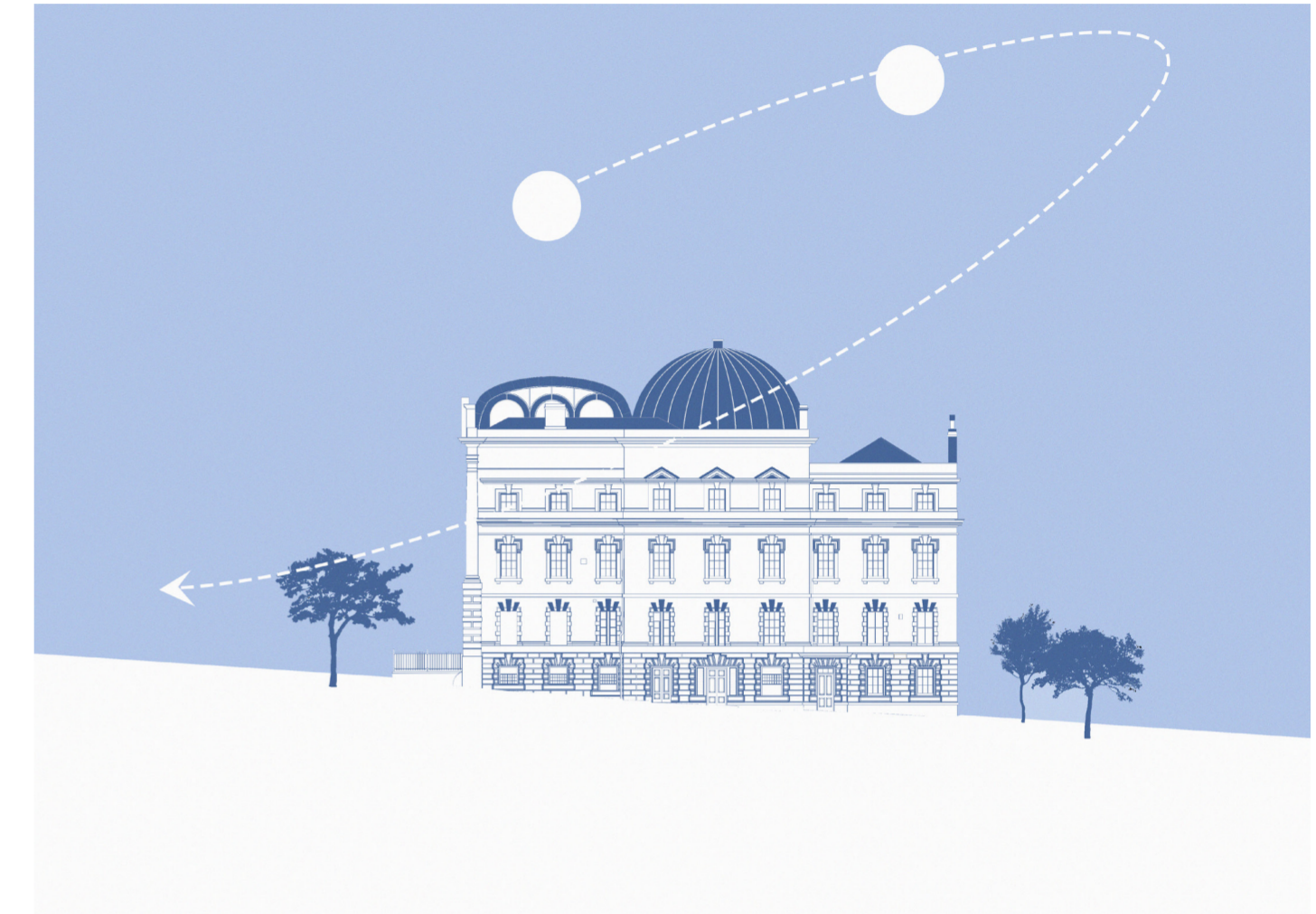
The open spaces are determined as the public gathering areas. A sense of town square in the center of the building defines the central point of the circulation that assumes a roundabout shape all around the building with circular directions that end in the roof with a panorama glass bridge around the dome.

WEATHER ANALYSIS - CLOUD COVER

December, is usually the cloudiest month of the year, the chance of overcast or mostly cloudy conditions is 74%, while in the summer (July) are the clearest days of the year, the chance of clear, mostly clear, or partly cloudy skies is 58%.



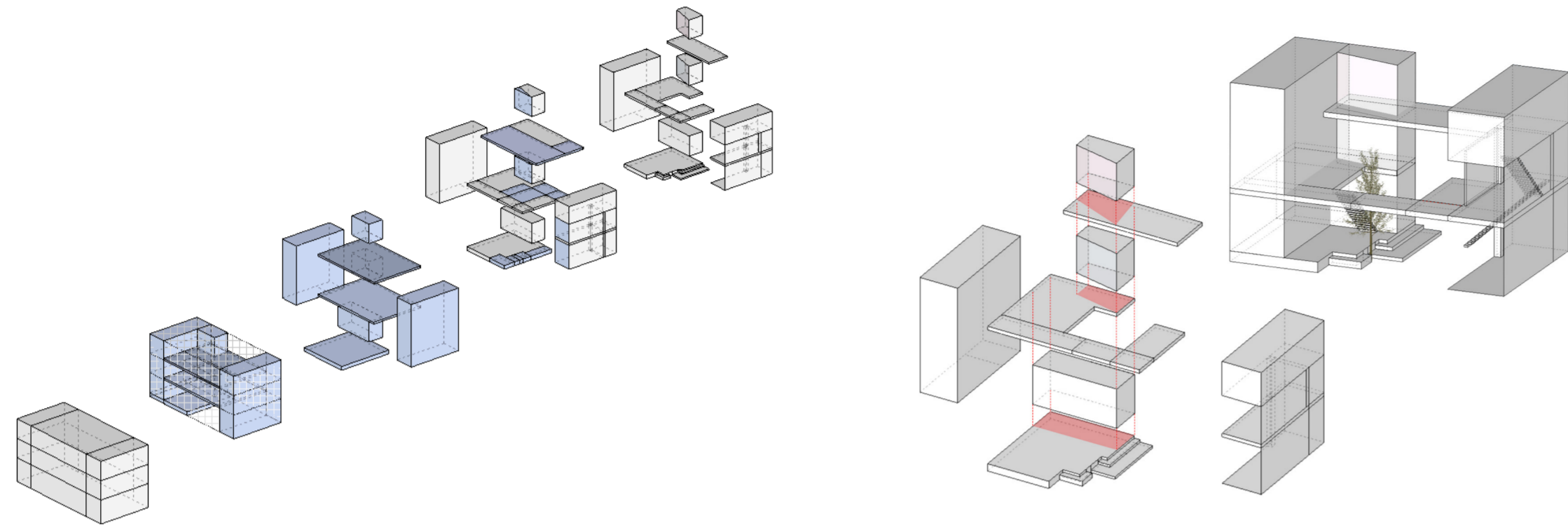
WEATHER ANALYSIS - SUN DIRECTION



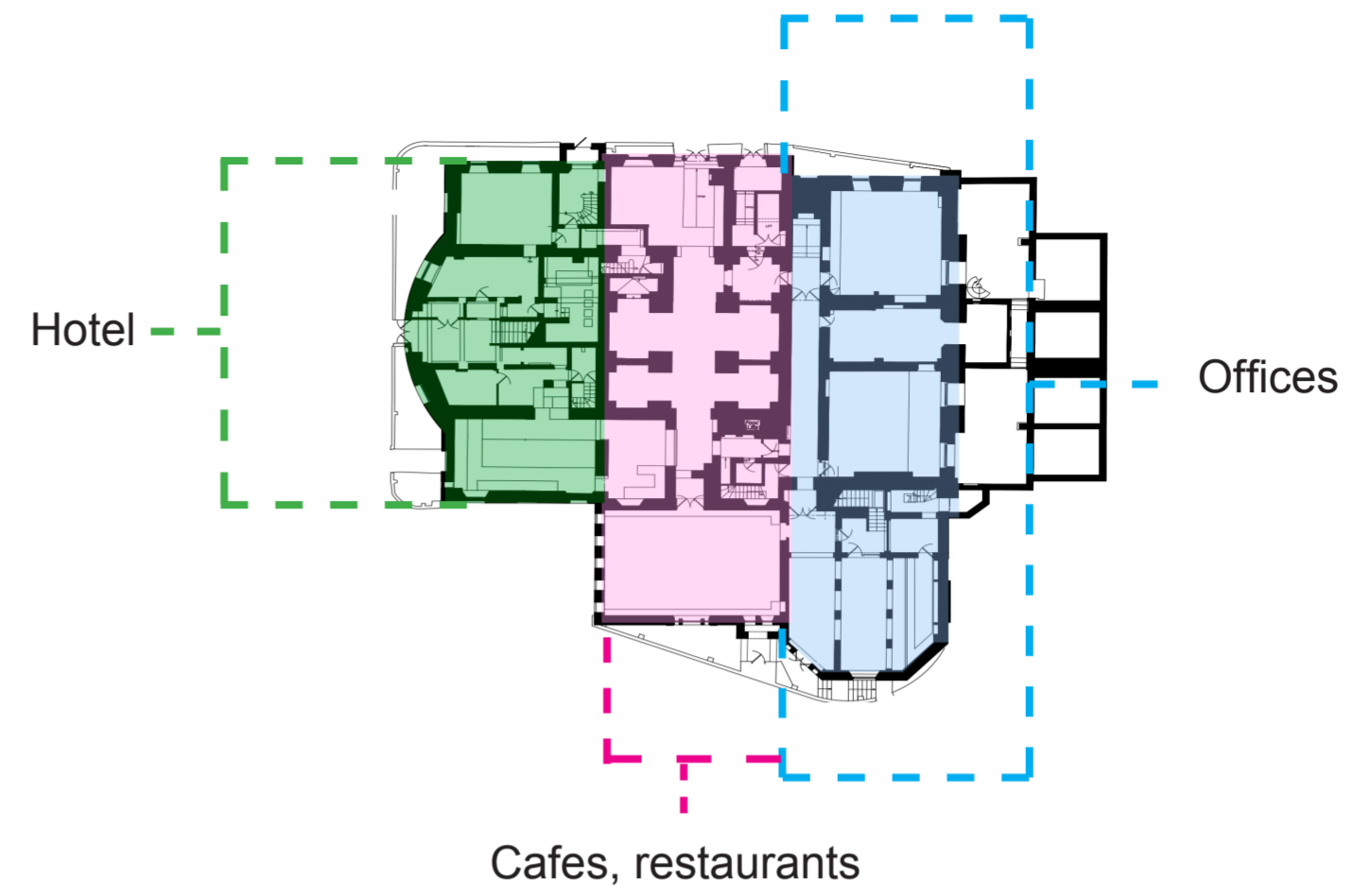
CONCEPT COLLAGE



OFFICE AREA DIAGRAM

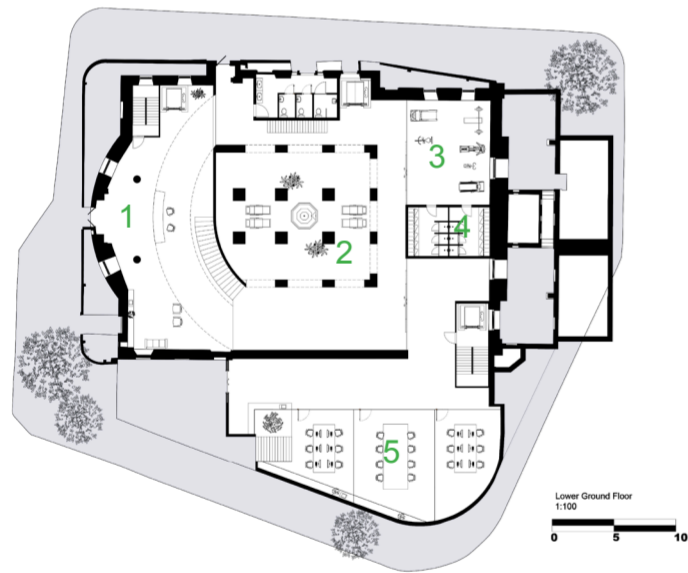


ZONING

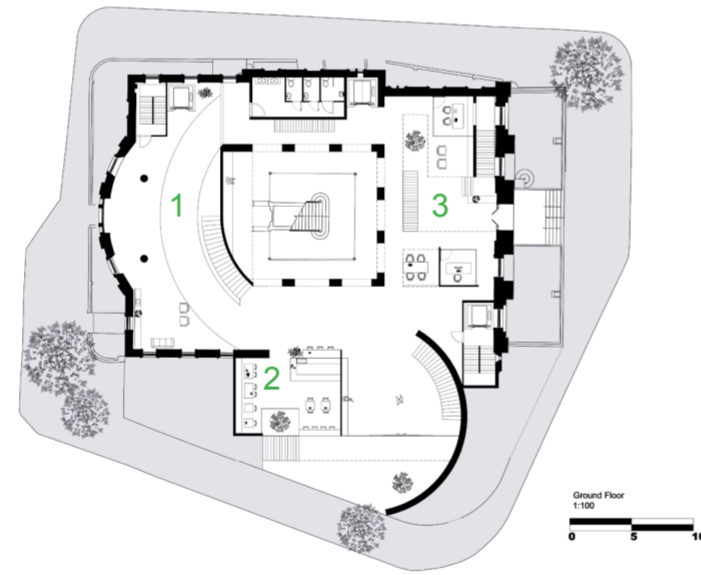


PLANS

- 1. Hotel and Gym Reception
- 2. Spa
- 3. Gym
- 4. Locker and shower rooms
- 5. Offices



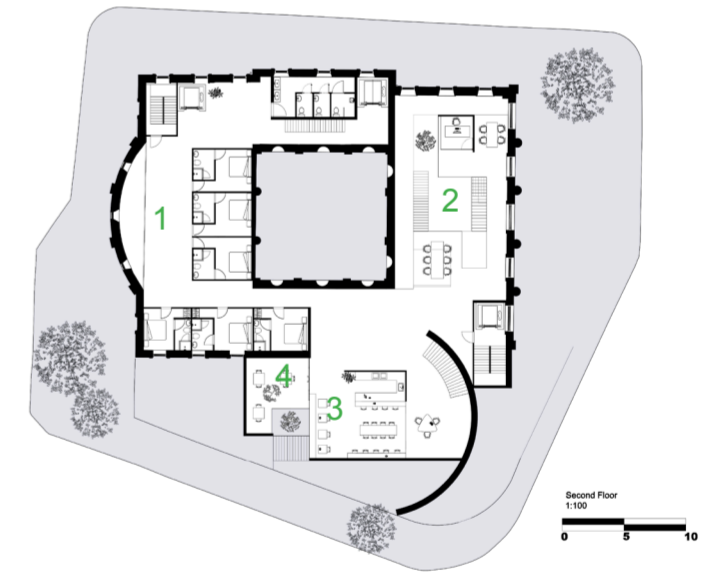
- 1. Suspended bridge
- 2. Coffee area
- 3. Offices



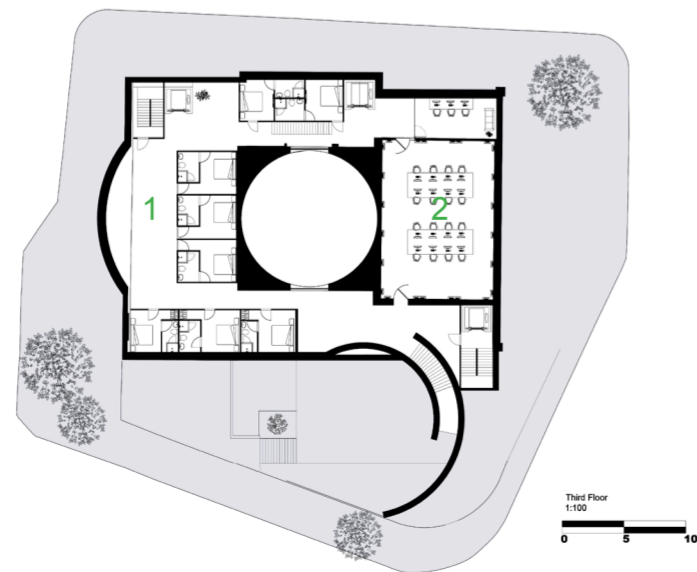
- 1. Hotel rooms
- 2. Offices
- 3. Meeting room
- 4. Offices



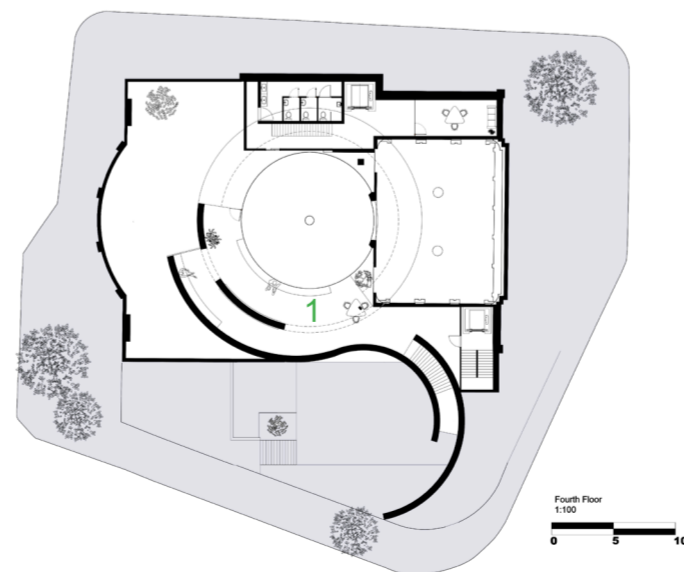
- 1. Hotel rooms
- 2. Offices
- 3. Kitchen
- 4. Terrace



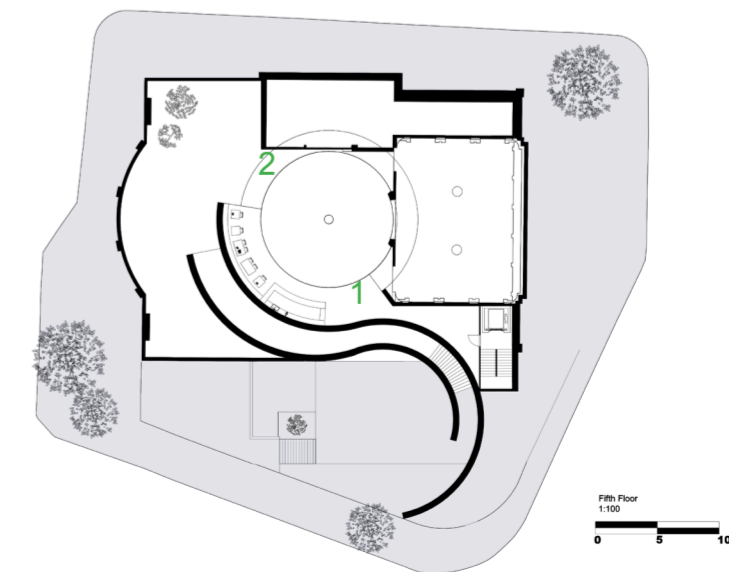
- 1. Hotel rooms
- 2. Offices



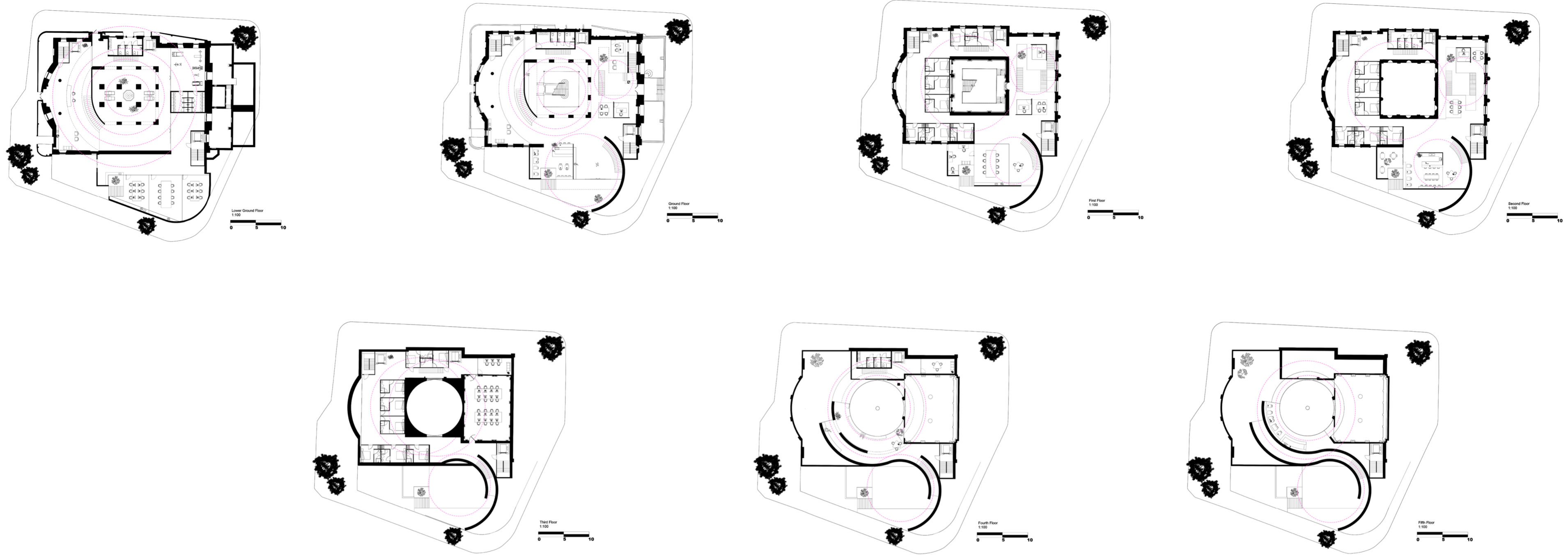
- 1. Company Showroom



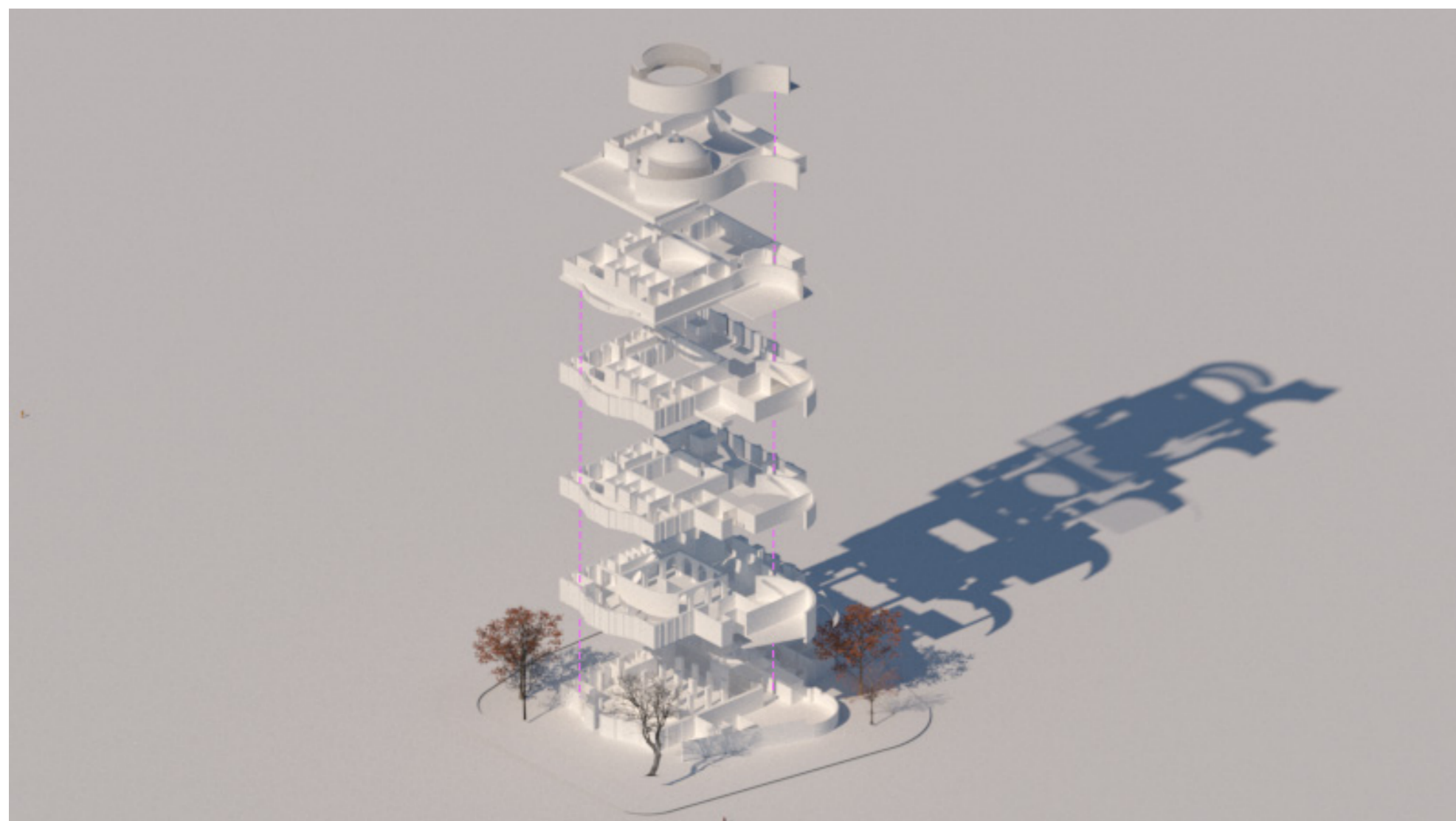
- 1. Bar/restaurant
- 2. Glass panorama bridge



CIRCULATION



FIRE ESCAPES DIAGRAM



CONTEXT



RENDERS

