

# SOPHIA UNTERTHURNER



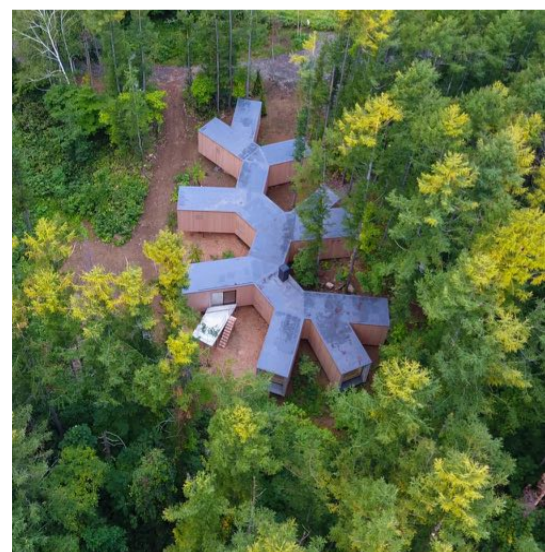
Makoko Floating School is a proposal from the Biennale 2016, it contains a light triangle-based floating structure which could never be flooded. Ideal for areas on high risk.



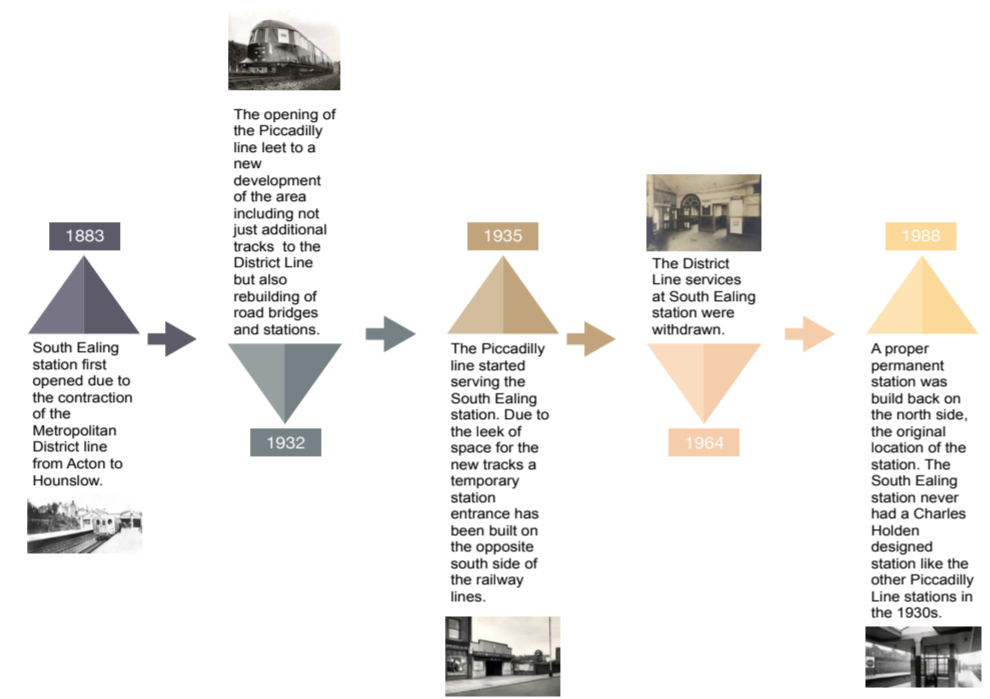
Charles De Gaulle Terminal 2E International Airport in Paris. In public buildings where the user size can change at any point the modularity is a common technique to build. The Terminal 2E was built in arched pieces which allow for the curved aesthetics to be maintained while remaining open to future additions.



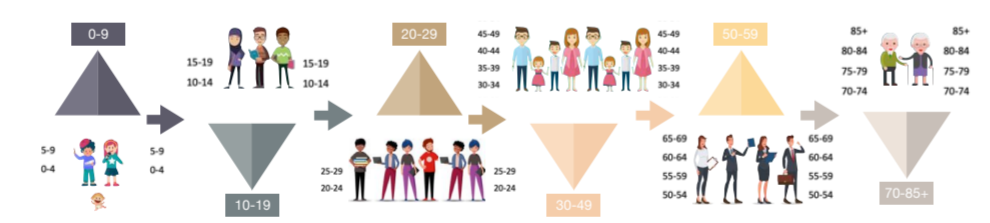
The Grid House designed by London based studio Space Popular in cooperation with local architects Estudio Alberto Burgos and Javier Cortina Maruenda located in Santa Barbara, Valencia is perfect example how to use a steel grid structure composed of 12-foot wide cubes as a structure and base for the whole house.



House In The Forest by Florian Busch Architects is a holiday home in the middle of the forest of Hokkaido, Japan. The architect build a 230 square meter home by putting identical wood framed boxes together, the whole building sits on a steel structure. Instead of clearing the site the Architect the home around the existing vegetations by using the wood framed modules.



The South Ealing tube station is a London Underground station for the Piccadilly line and it sits in the London Borough of Ealing. The majority of the people living in Ealing are people between twenty-five and forty. Therefore the tube station is used by a quite young generation, people how live there work there or study in the University of West London. Considering the research the Station is going to face a increasing use in the following years. Therefore an easy build and sustainable development for the station would be a beneficial.



**Workers**  
people working in the area, such as local shops, real estate agency, University.

**Travelers/Tourist**  
people traveling from Heathrow airport to London  
Attractions in Ealing: Lammas Park, Navrtar, The Musical Museum, FlightPad.

**Families**  
Families have settled down in the last years because of the availability of good infrastructure such as schools, kindergarten, healthcare and retail facilities.

**Students**  
The station is located in the middle of the two Campuses of the University of West London, the Ealing site and the Brentford site.

