

Old Sessions House

The project aims to respond to the current demands of workplace and accommodation providing hybrid spaces that are designed around flexibility, wellbeing and inclusion.

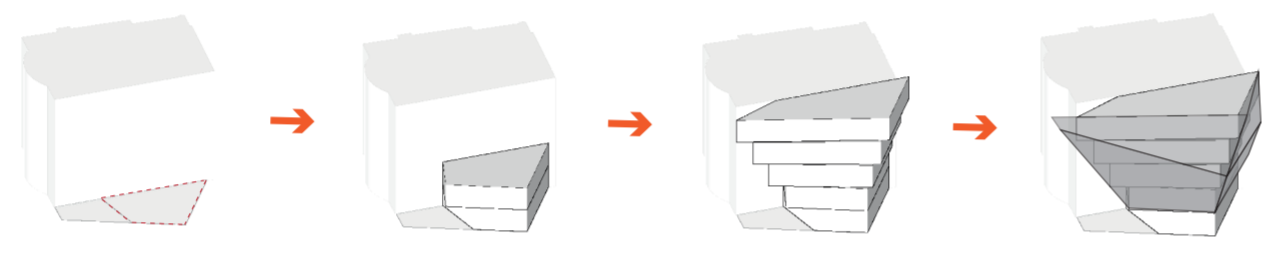
It will consist of spaces for work and leisure inside one of the most recognizable buildings in Clerkenwell, Old Sessions House.

The building preserves its features as a symbolic reminder of its history. Therefore, the project intends to respect such aspects by incorporating a contemporary extension that enhances the original Portland Stone facade.

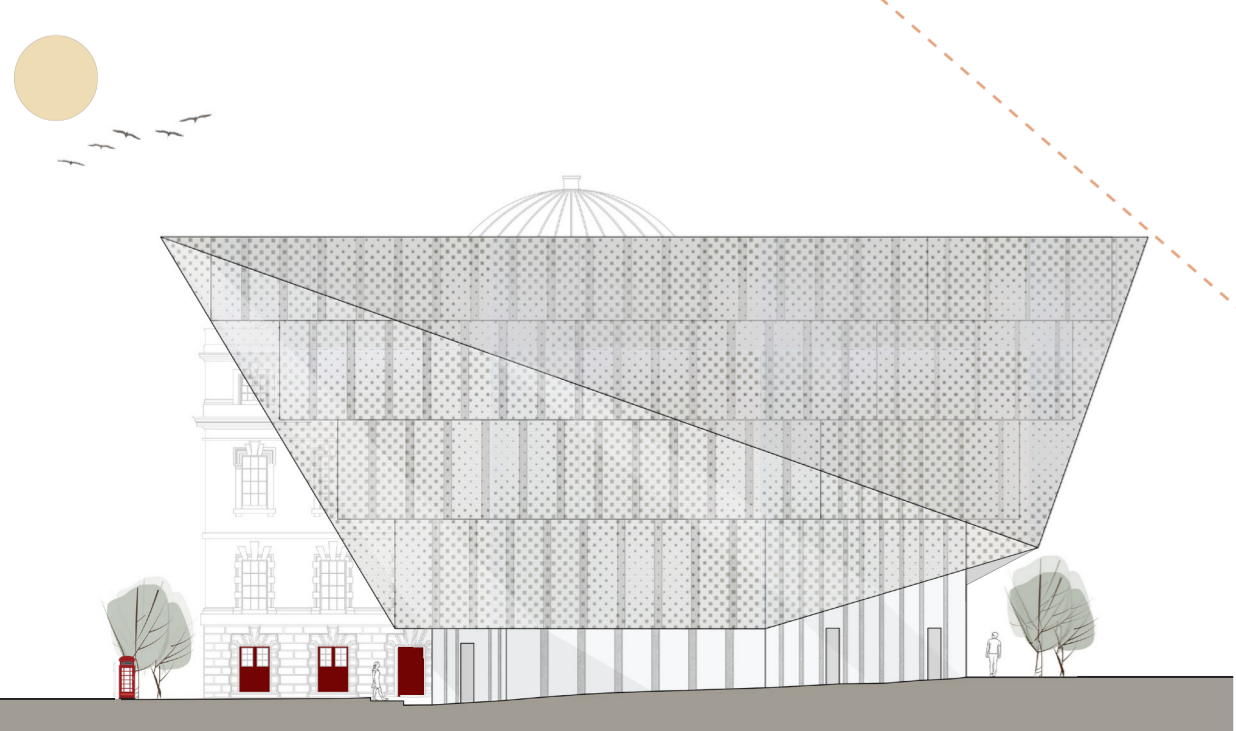
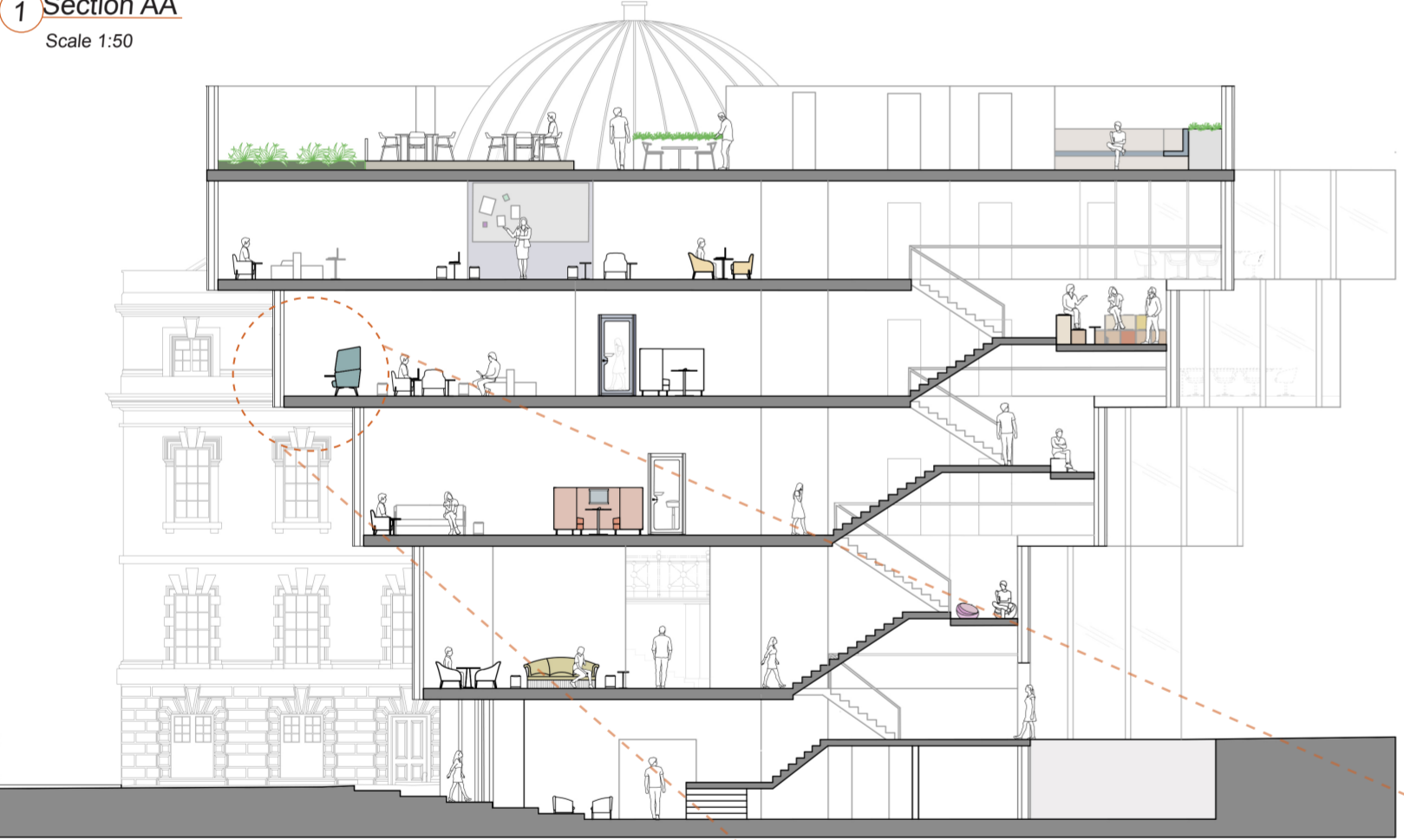
The building's central hall will serve as the social hub for gathering and refreshment while the upper floors will divide between hotel accommodation and co-working space.

The 9-metre-high main courtroom will host capsule style rooms, a-room-within-a-room concept implemented so that all historic features of the room can remain intact.

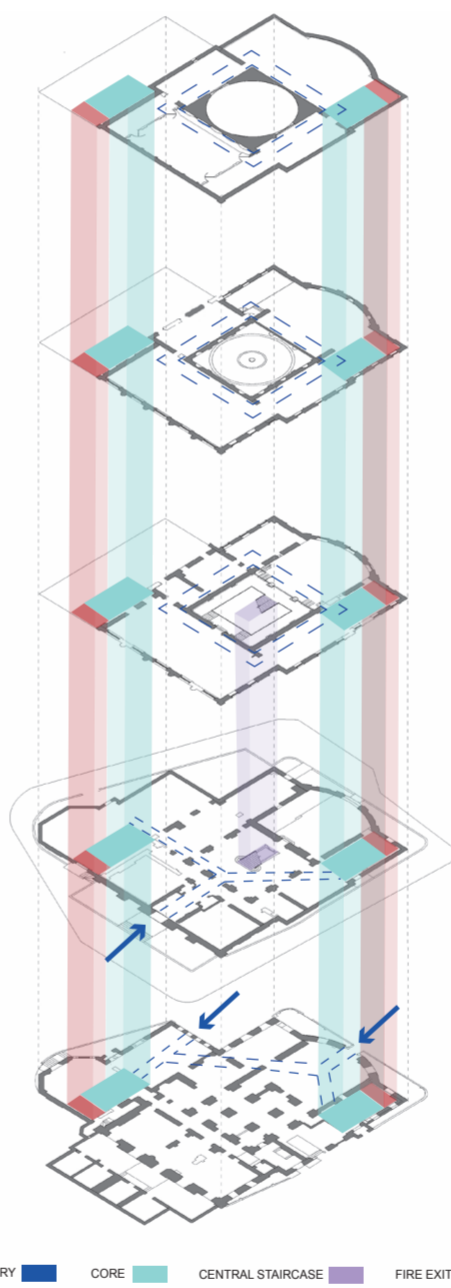
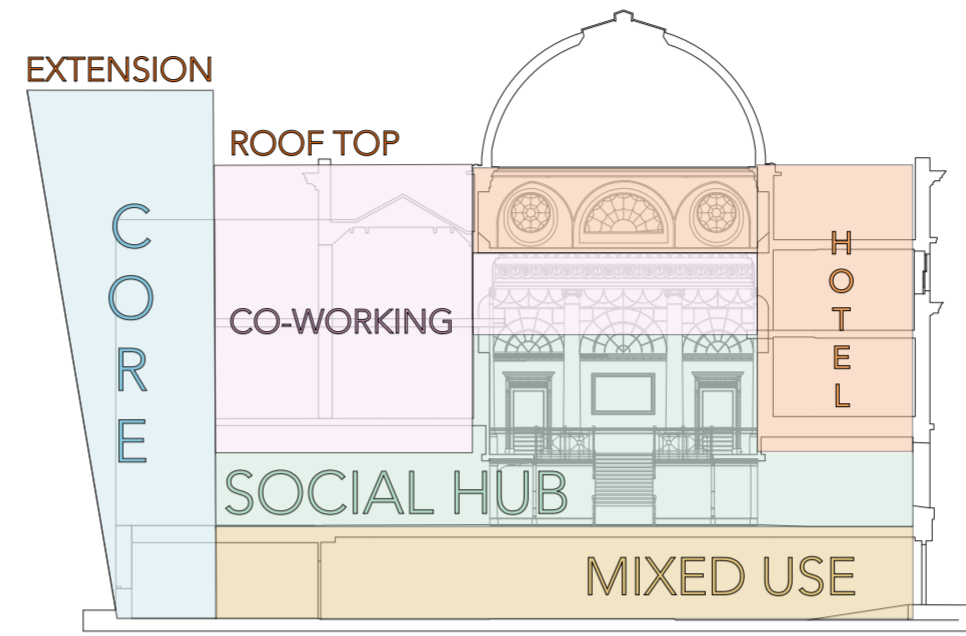
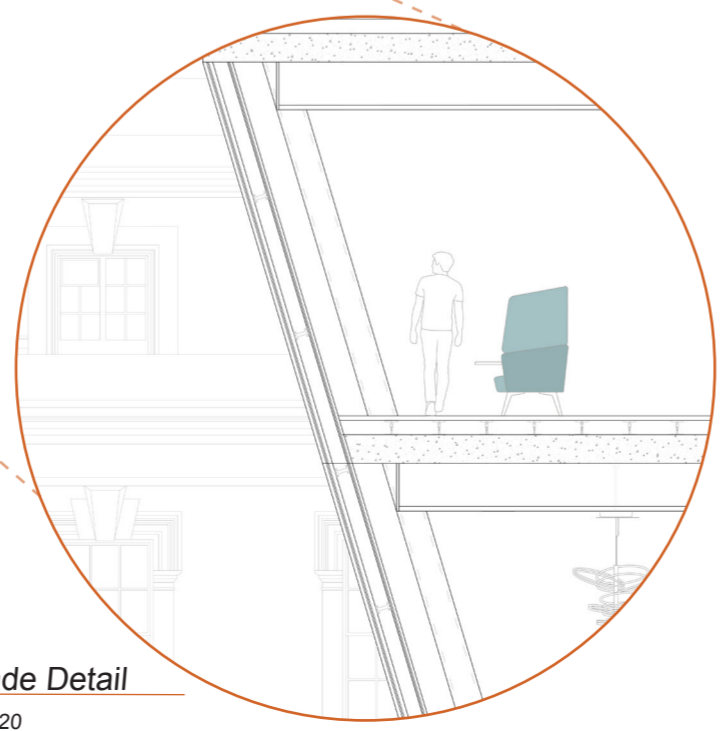
The extension side will host activity-based workspace, which includes private meeting pods, a "ribbon" collaborative table and modular meeting spaces.



1 Section AA
Scale 1:50



2 Façade Detail
Scale 1:20



3 Section BB
Scale 1:50

