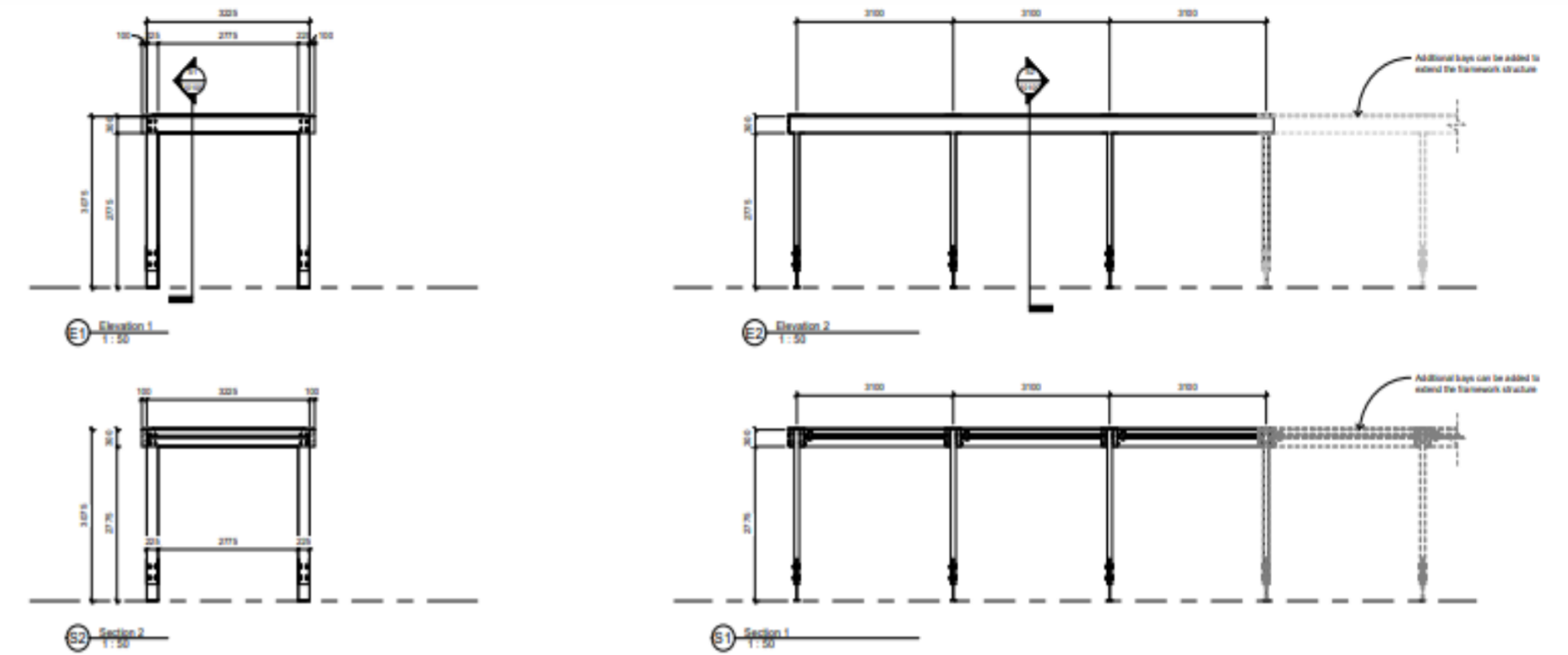


RSA project: TRANSFORMATION STATION

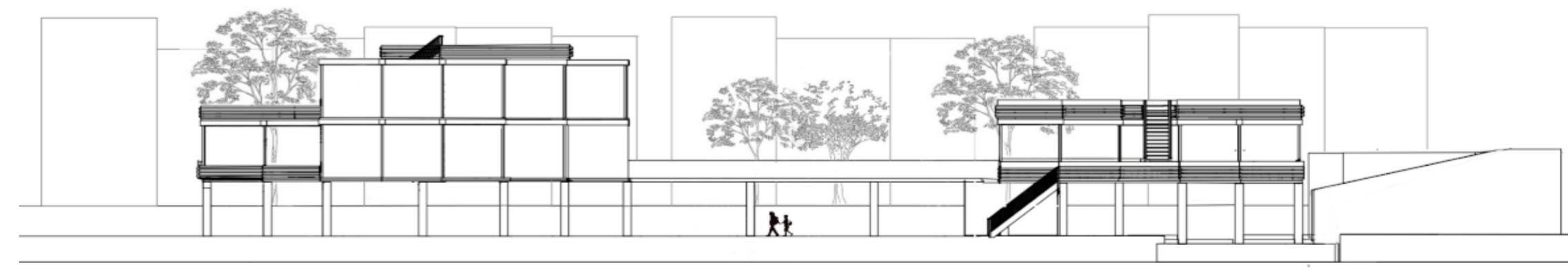
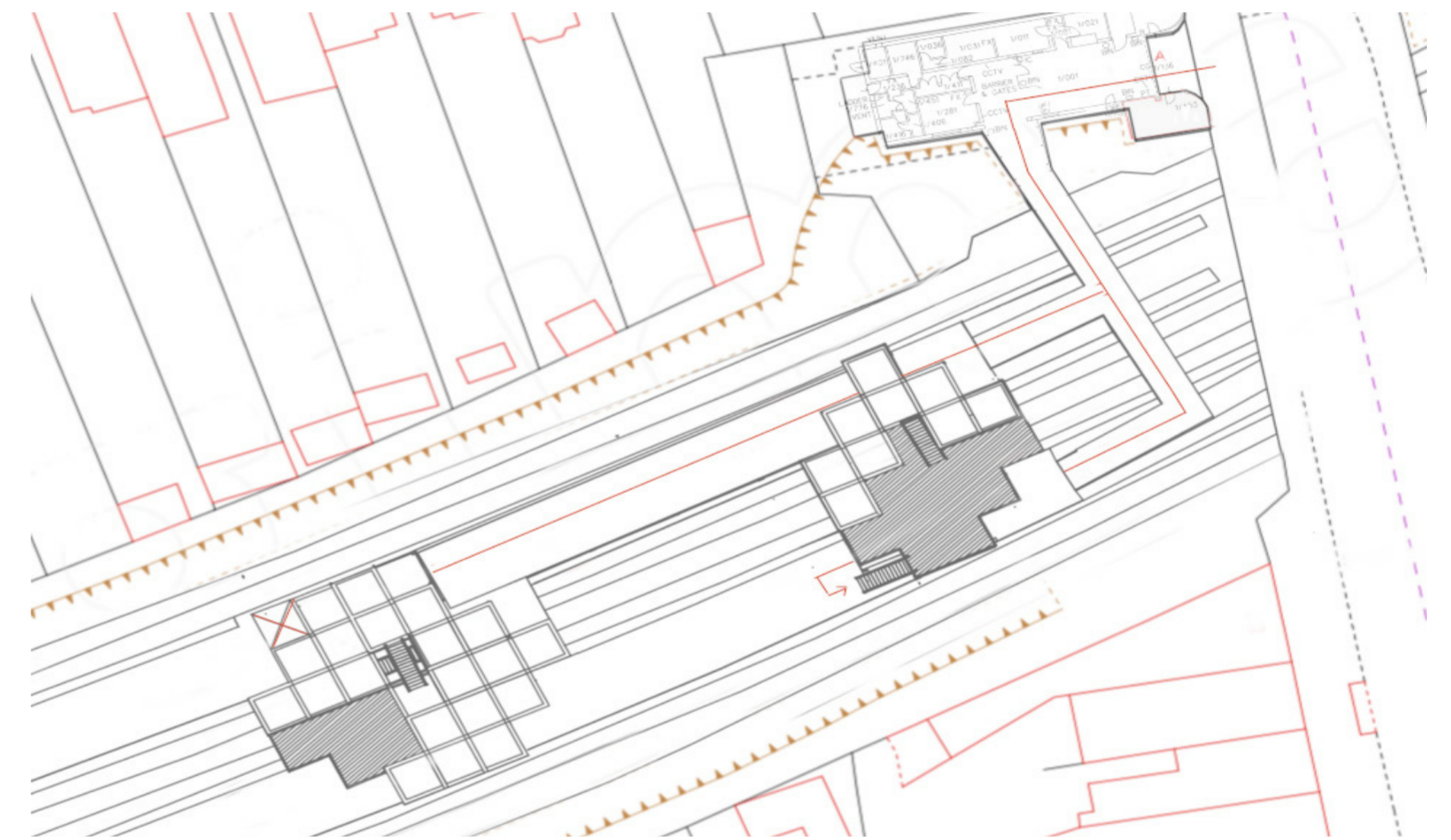
The aim of this project is to rethink the role that transports hubs play beyond providing transit services by suggesting new uses for these spaces. For this project I chose to design a second use space for South Ealing station which is going to be a community garden for the elderly. Proposals need to go beyond a single use solution in the station (eg a single social intervention), towards developing a sustainable model and system where station managers and operators can work with the local community in the longer term, to shape, deliver and change interventions in a space as needed. Moreover, the proposed model must use the provided modular unit as the base of the design. Each modular unit (dimensions: 2.8m x 2.8m, see toolkit) can be used alone or combined to create a bigger space, as long as it fits the small-scale transport hub you are working with. This proposal seeks to support these locations to be more flexible and accommodate different lifestyles.



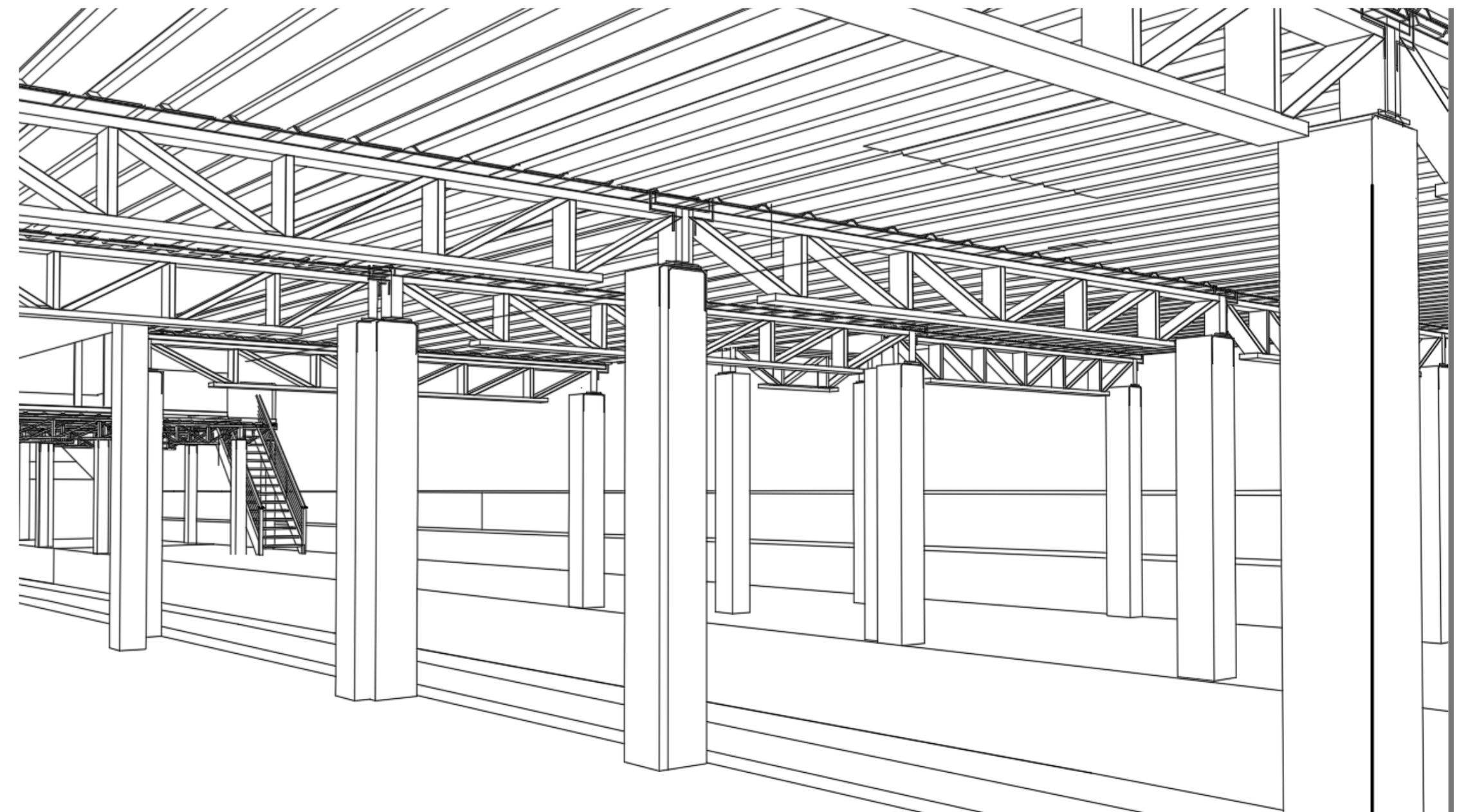
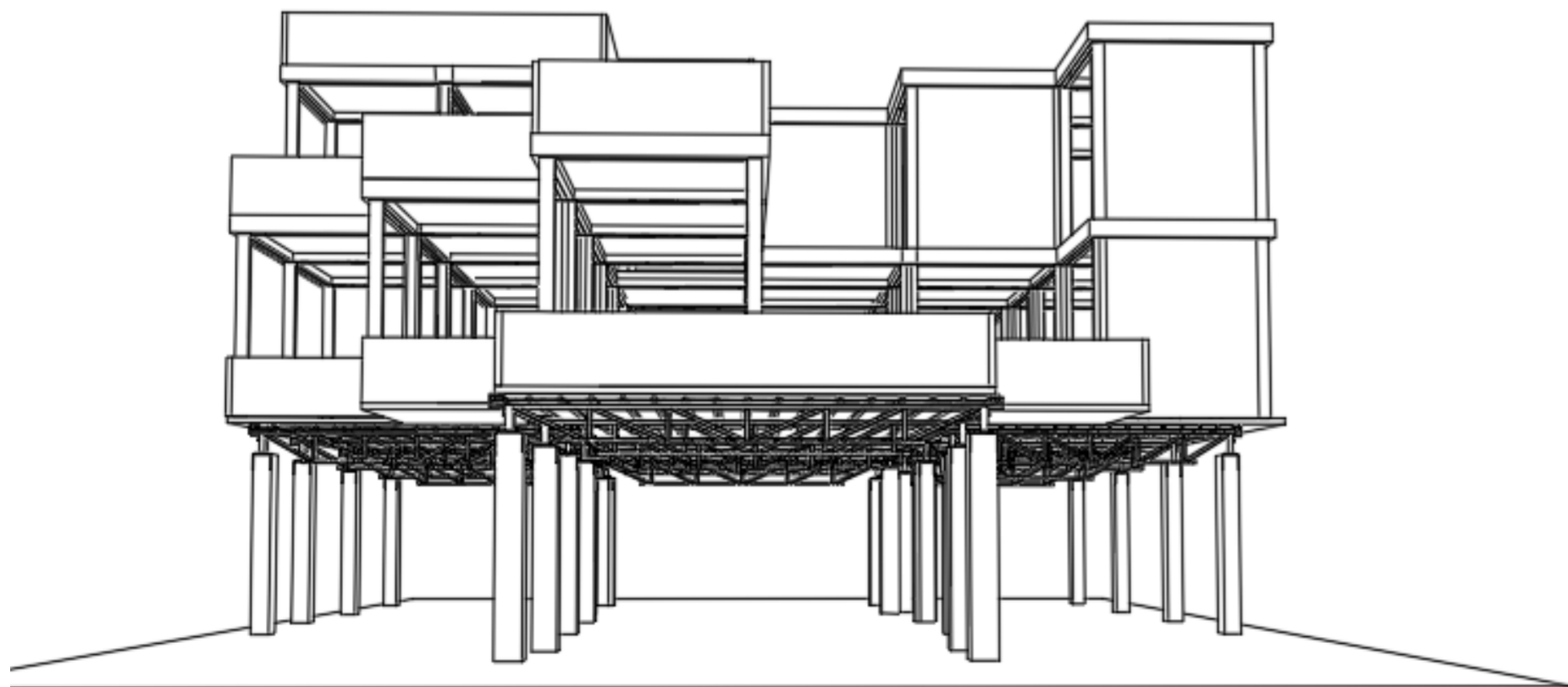
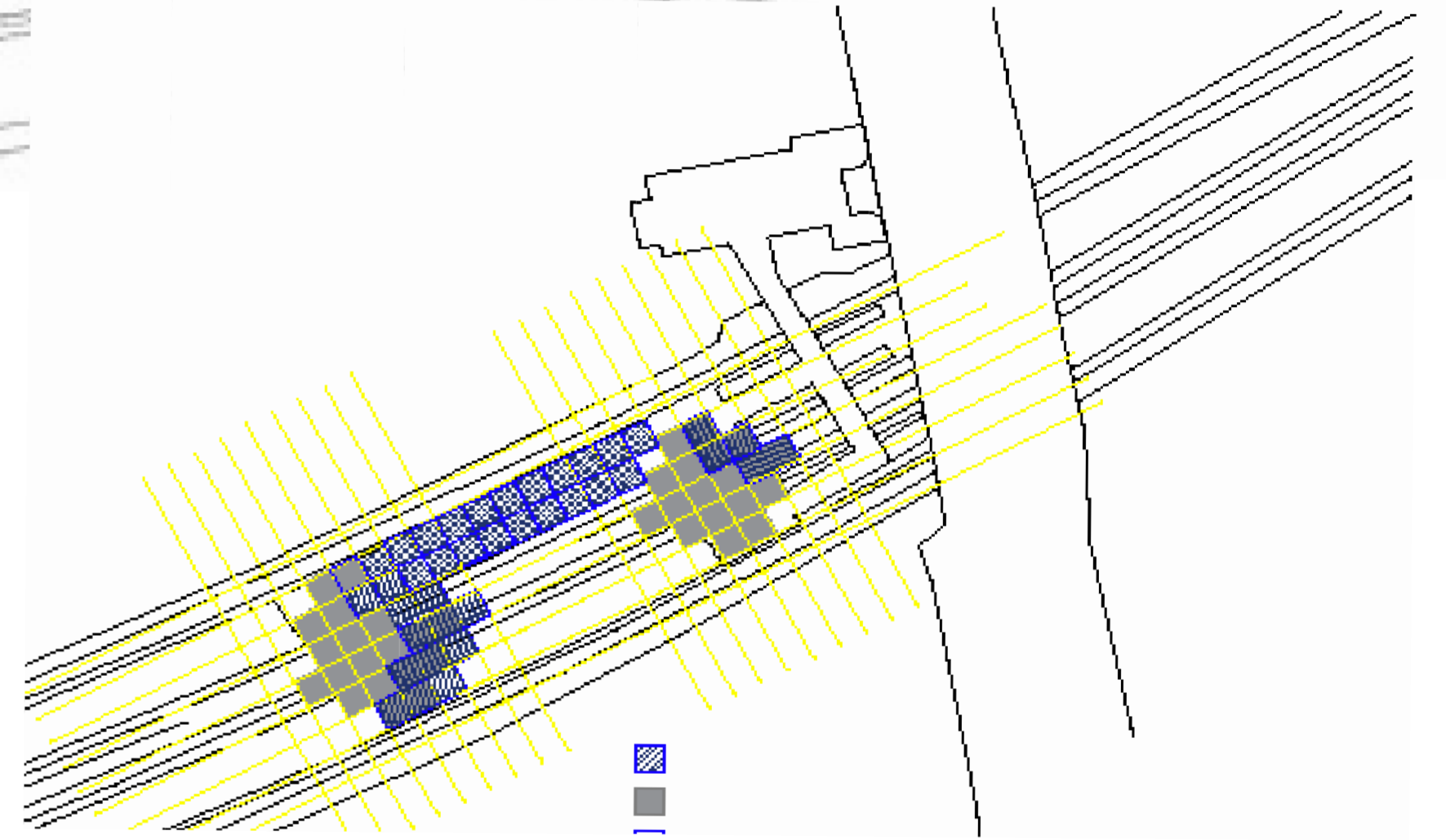
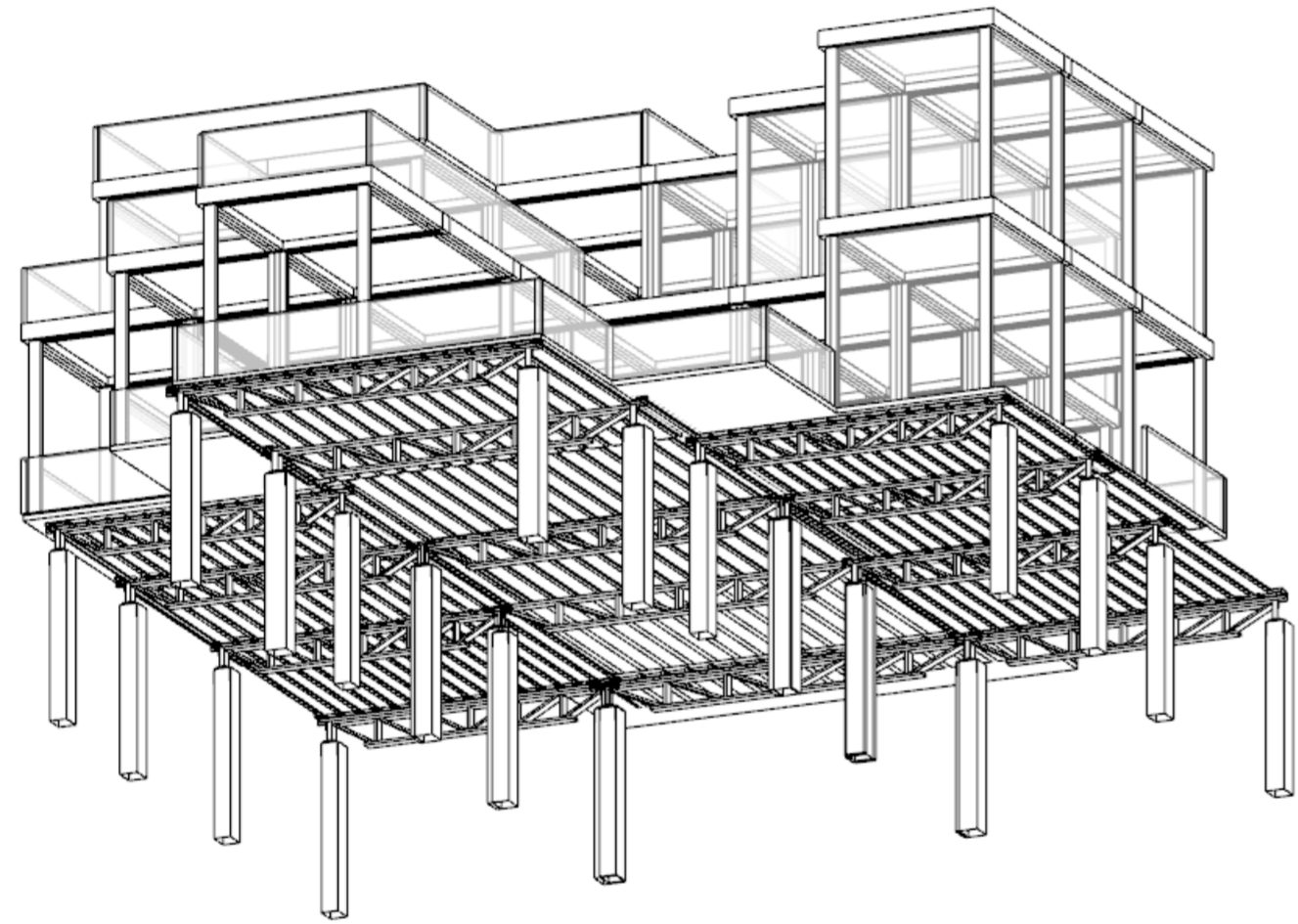
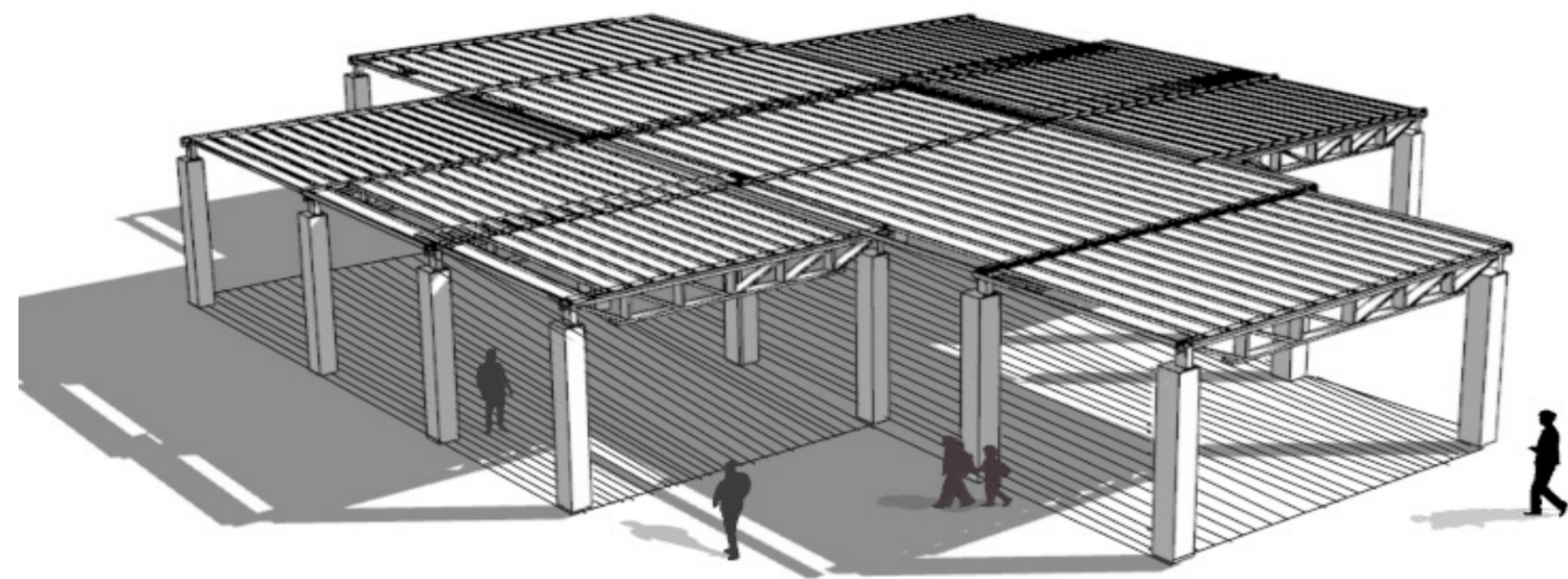
MODULAR STRUCTURE

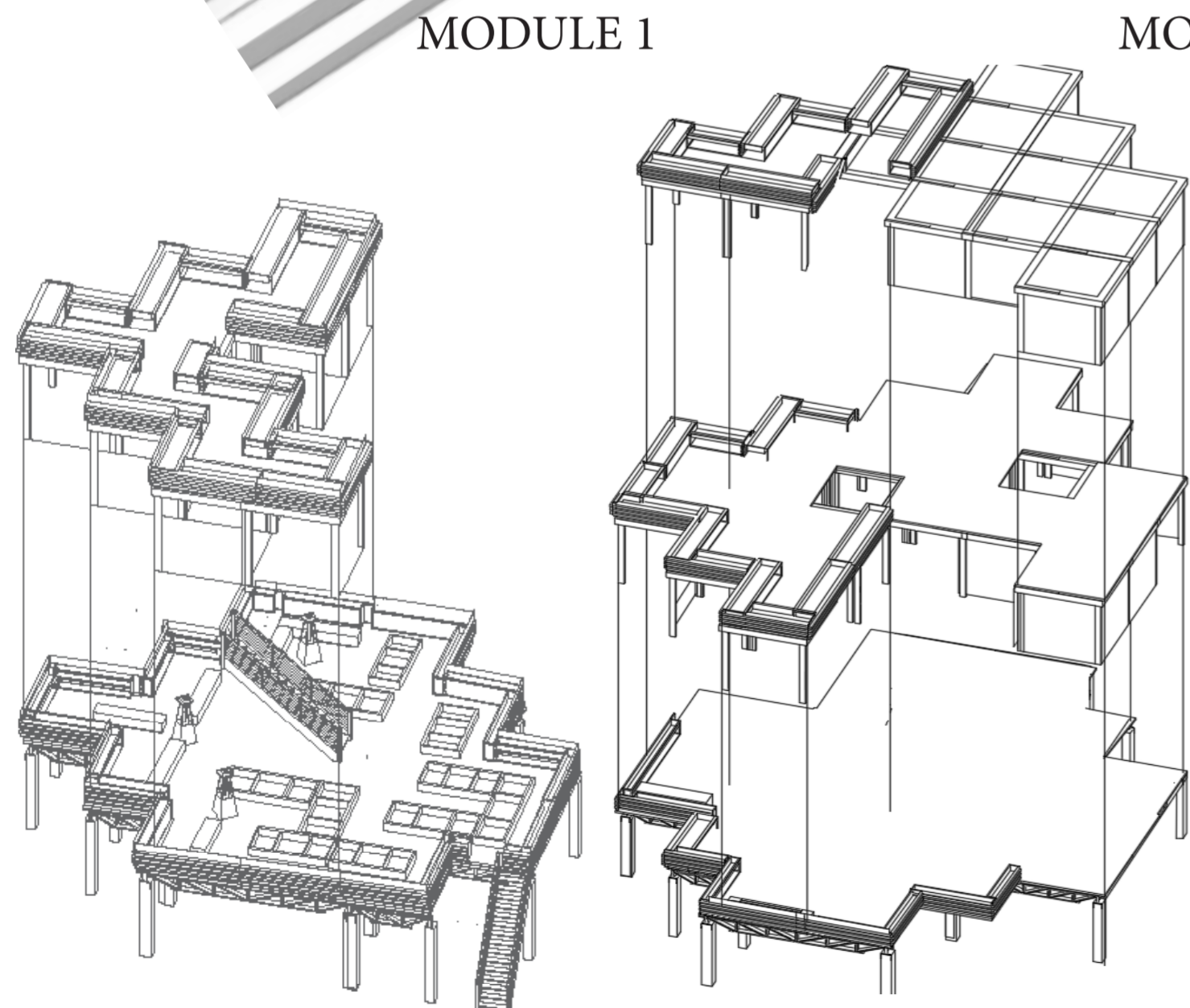
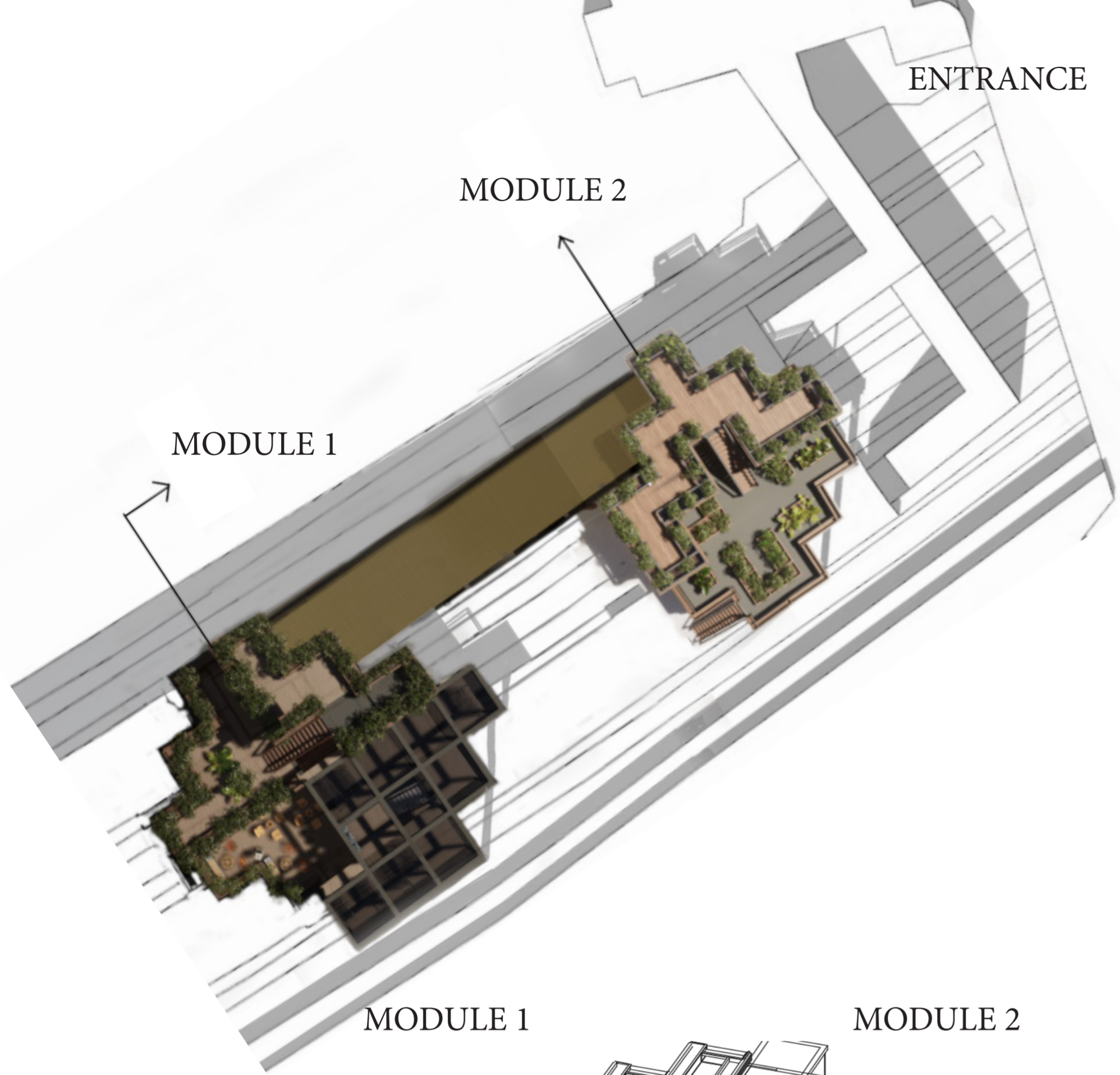


PROPOSED SITE PLAN AND CIRCULATION

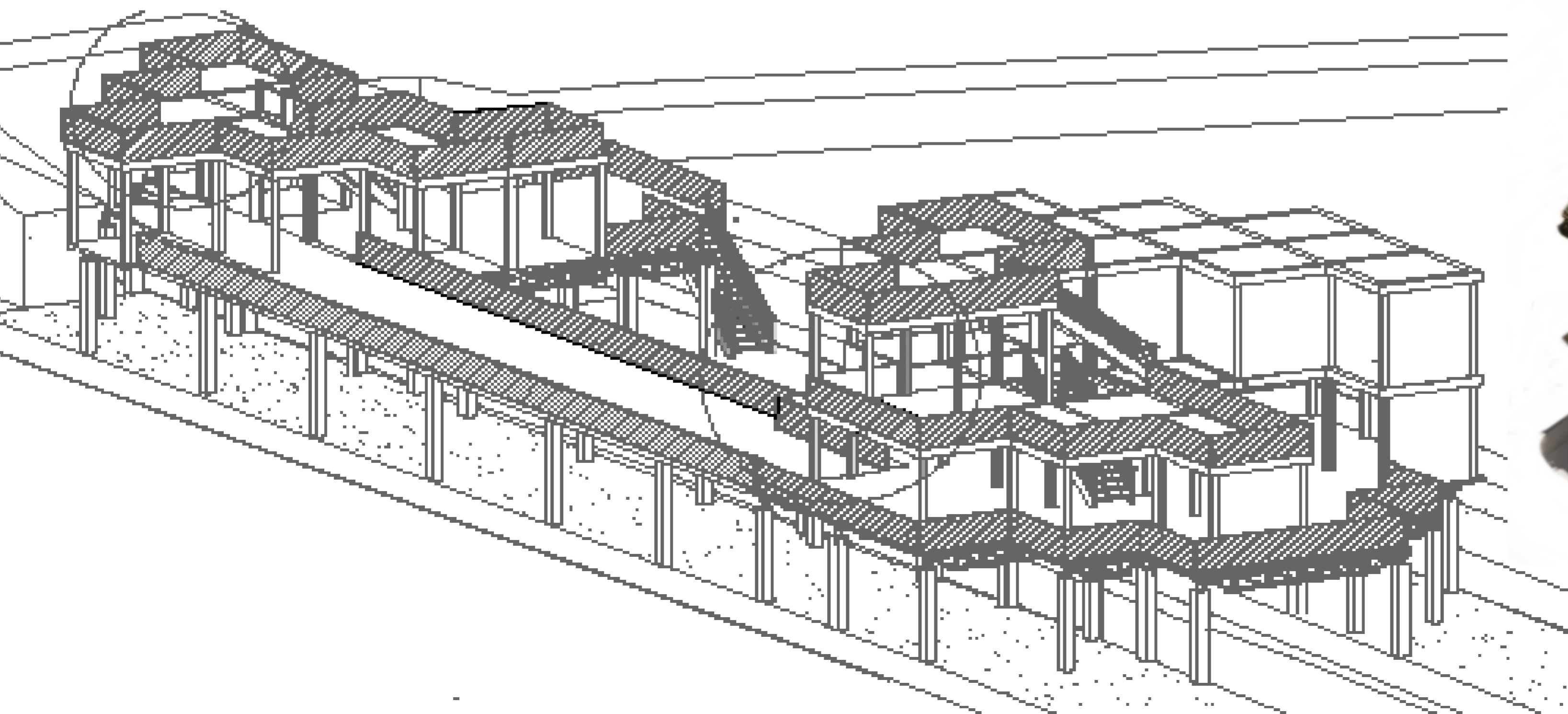
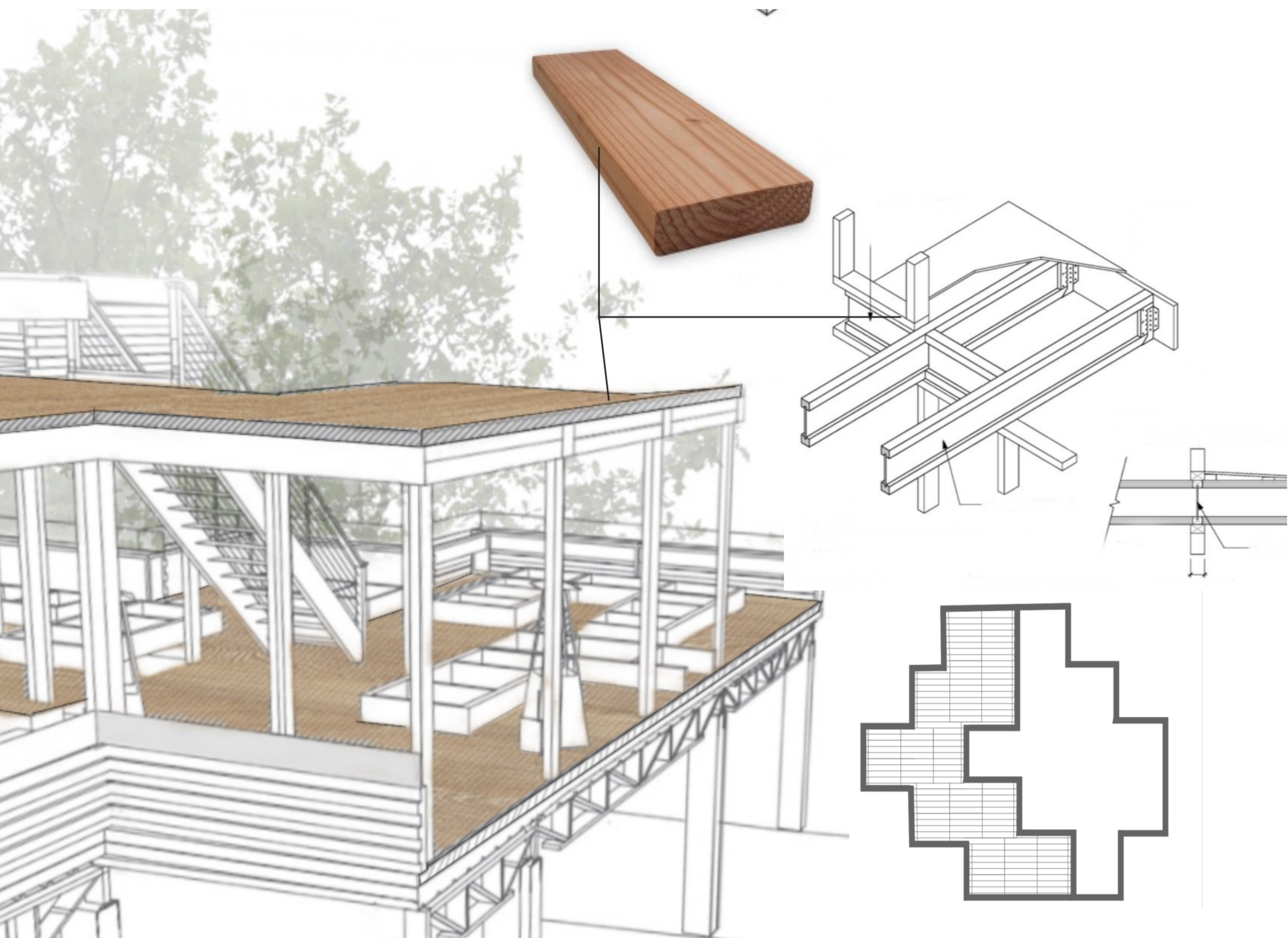


STRUCTURE DETAILS





SIDE ELEVATION MODULE 1



FRONT ELEVATION MODULE 1

