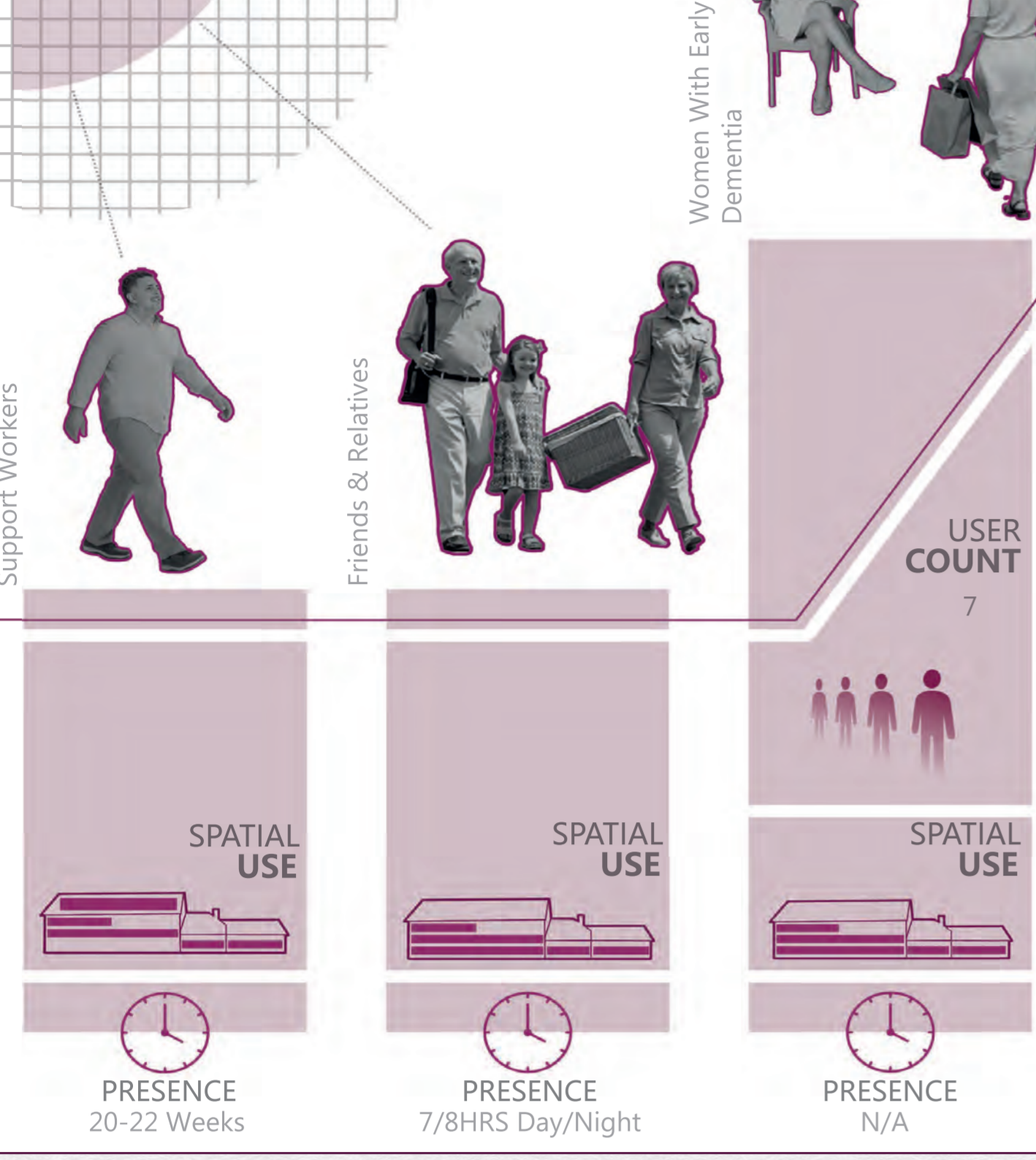


"Comprehensive lifestyle changes may significantly improve cognition and function after 20 weeks in many patients" (Ornish, 2024)

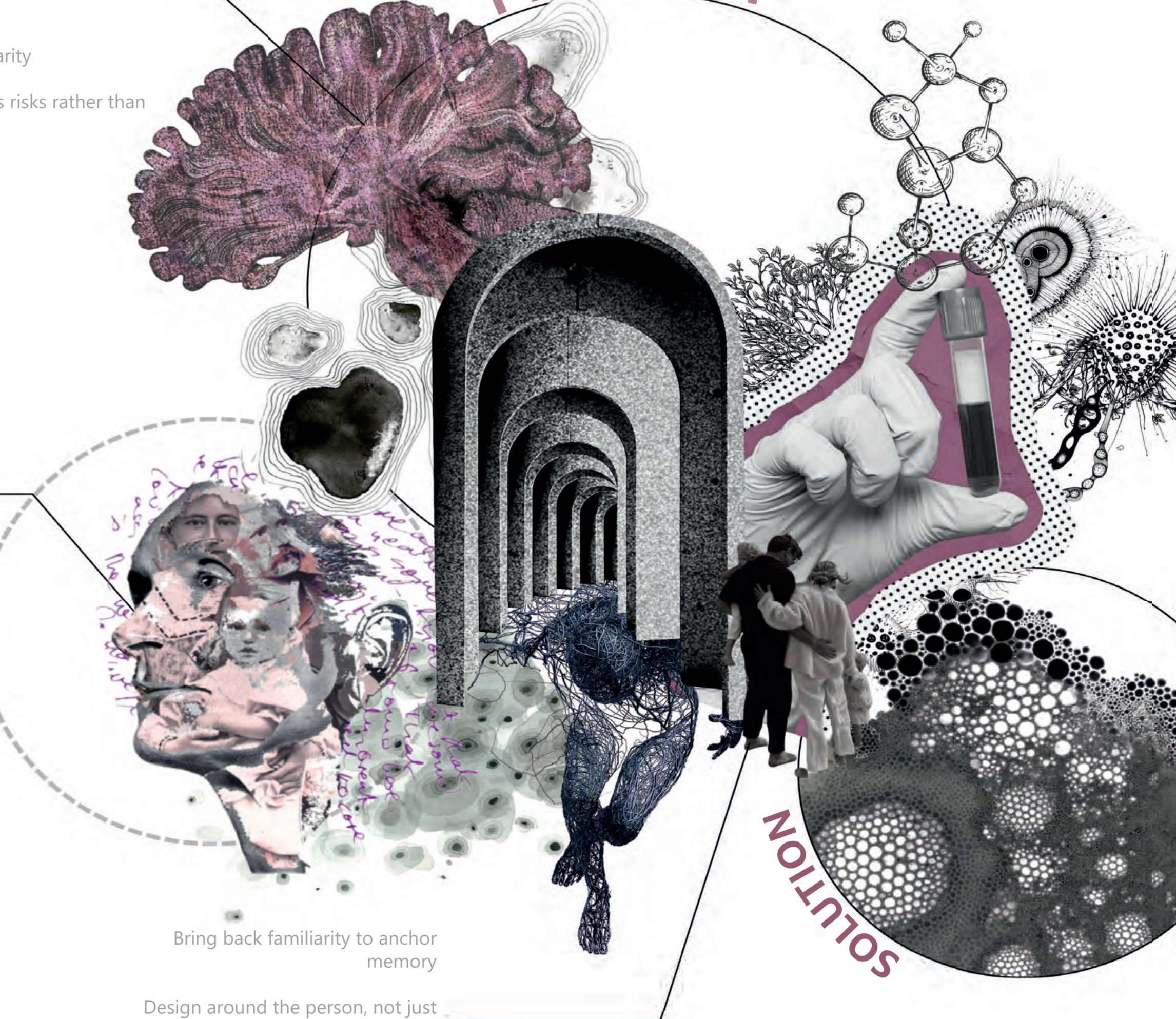
Challenging the institutional approach to early onset dementia, the project redefines cognitive care through a residential home that protects identity and independence before they begin to disappear. Rather than leaving women to manage early cognitive change with limited support or moving them too quickly into long term care, the scheme introduces a restorative stage between treatment and everyday life within a familiar domestic setting. It gives residents time, focus and support to engage with their condition rather than struggle through it alone. Interior architecture is used as a therapeutic tool where routine and movement become moments of reassurance, clarity and control. Organised through three residential zones called Focus, Form and Flow, the scheme uses spatial sequencing, thresholds, wayfinding and ergonomic design to guide residents through spaces that support their daily routines and help them maintain autonomy and identity as their condition develops.



**PRIMARY USERS**



- Assuming they cannot cope in everyday spaces
- Removal of familiarity
- Treating people as risks rather than individuals
- Enforced calm
- Zero stimulation



More than 70,000 people in the UK have young-onset dementia, with symptoms developing before age 65

Around 42% of people received no follow up after 6 weeks of diagnosis

Women have a higher lifetime risk of dementia

People with dementia usually risk losing their connections due to feeling overwhelmed

When social interaction is restricted and daily roles are eroded

When social interaction is restricted and daily roles are eroded

When social interaction is restricted and daily roles are eroded

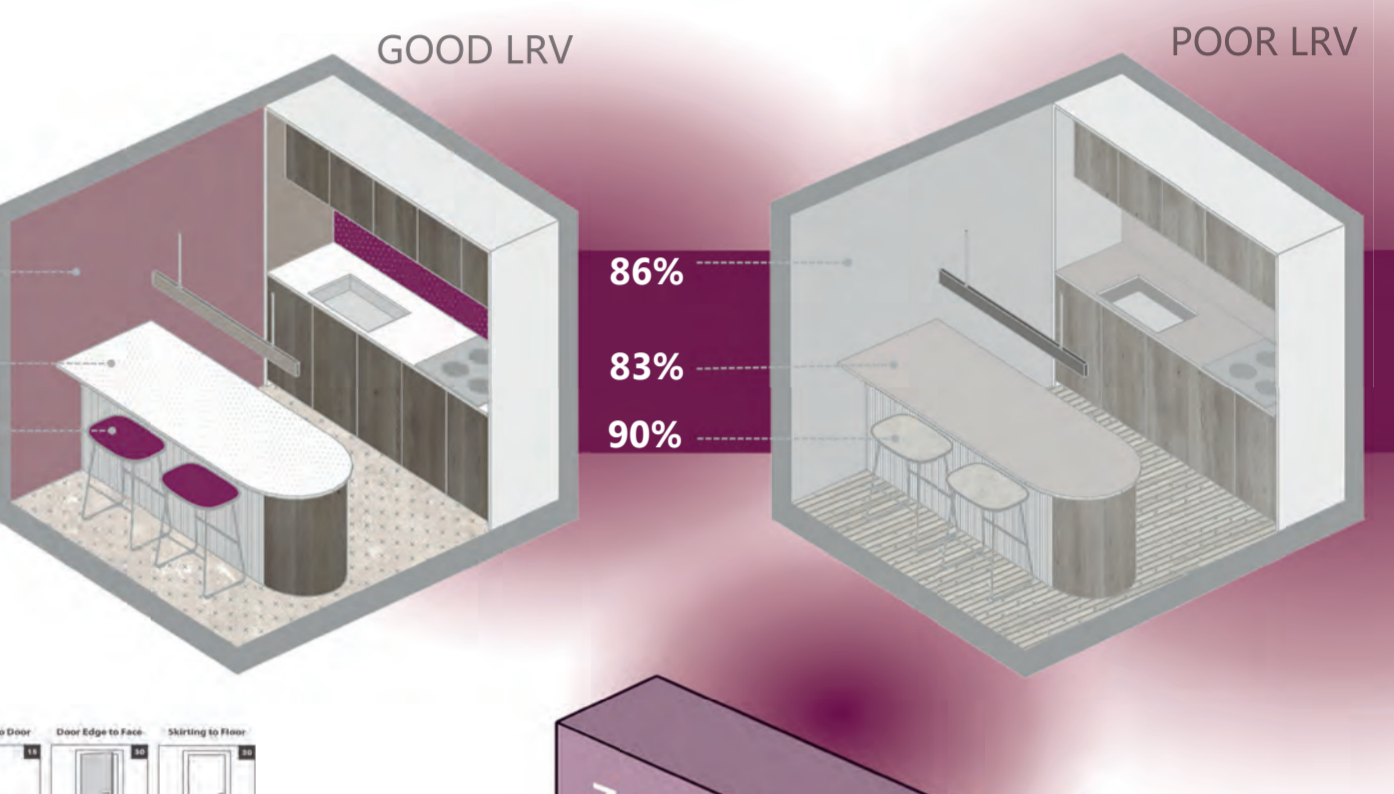
Bring back familiarity to anchor memory

Design around the person, not just the condition

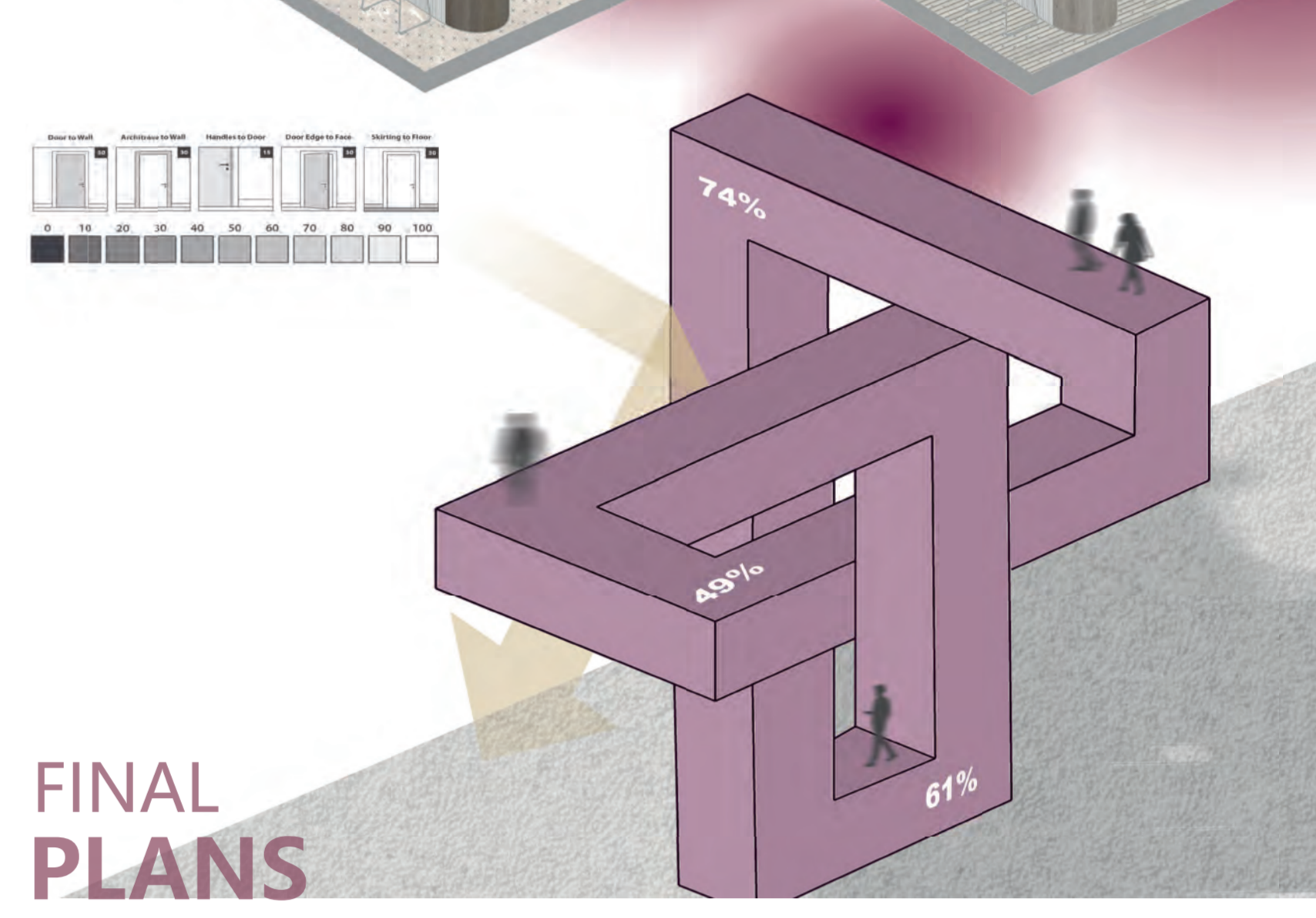
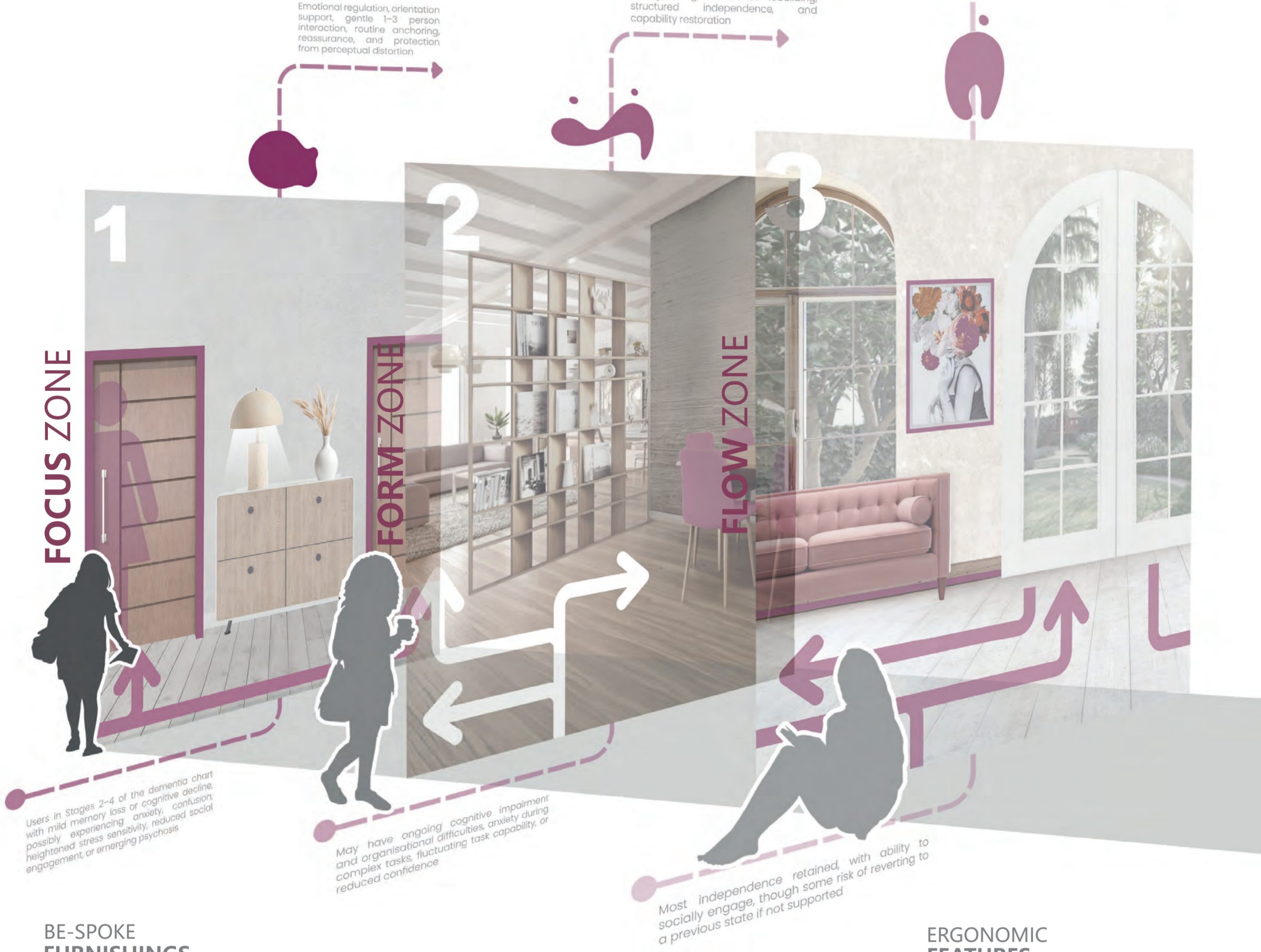
Shape sensory input instead of removing it

Structure space to guide everyday routines

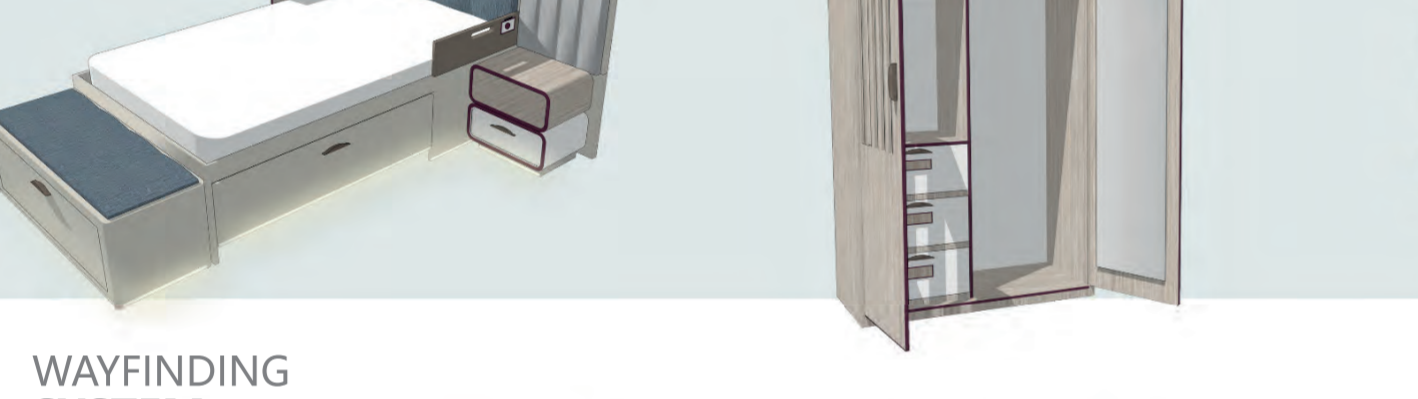
**LRV STUDY**



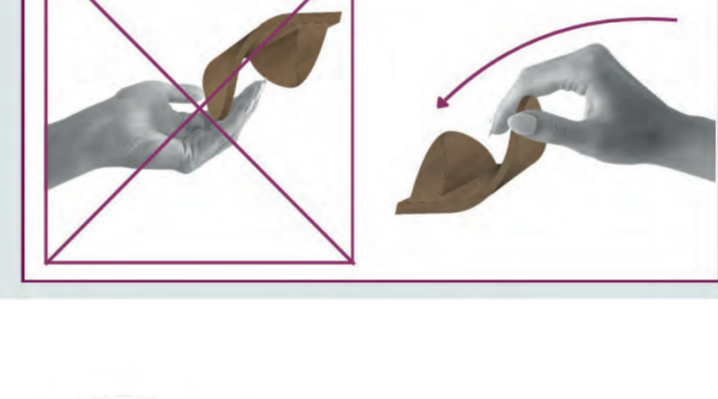
**DESIGN BASE**



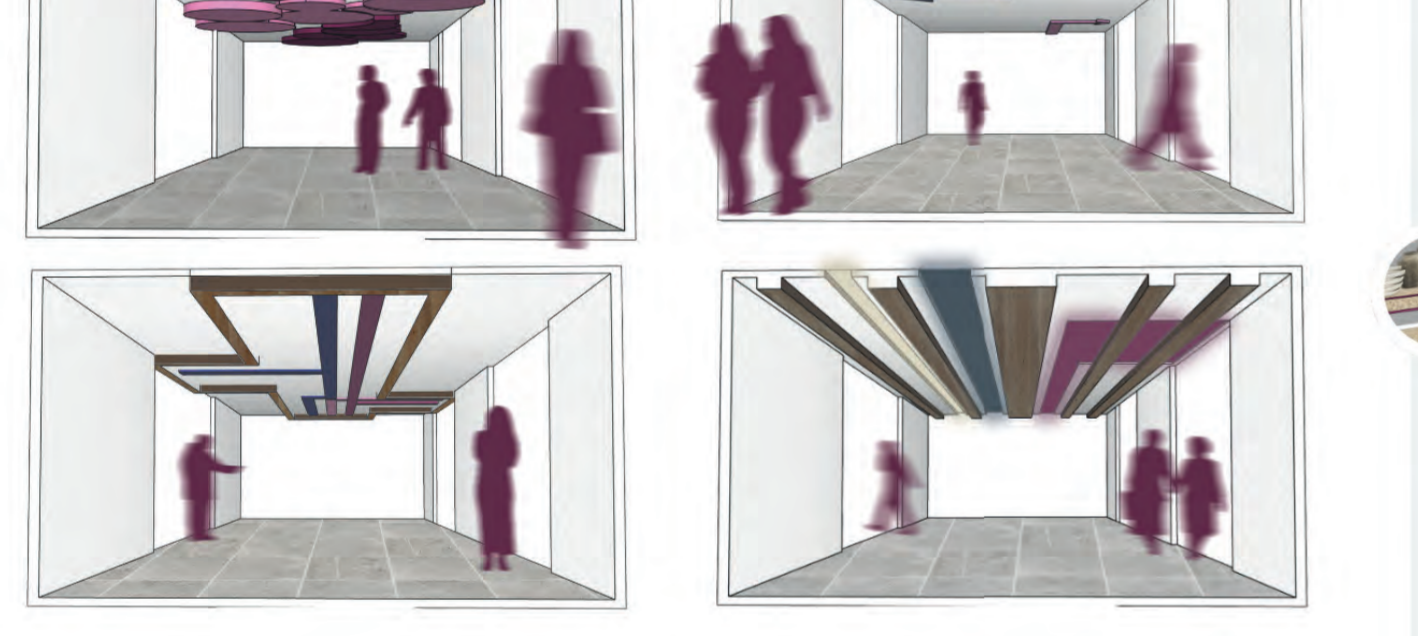
**BE-SPOKE FURNISHINGS**



**ERGONOMIC FEATURES**



**WAYFINDING SYSTEM**



**PARTITION WALL**



**CONVERTIBLE DISPLAY WALL**



**EXTERIOR LIFT**



**BIRD-EYE VIEW**



**DETAIL AREA**

