

Interventions, Disruptive Spa

For this brief, we were assigned to design an end of year degree show for all ACE departments to showcase their hard work, in Brodgate London.

The challenge was to design an exhibition space in which all departments, such as architecture and fashion, can showcase their design work and catwalk all in one gallery space. We had to make sure that this space is safely functional for both internal and external users and aesthetically impressive.

This design includes five elements,

- 1) an entrance arch,
- 2) a reception desk,
- 3) a catwalk,
- 4) a bar and
- 5) exhibition scaffold structures and plinths.

We as a group were assigned with the walls and plinths. In order to achieve this, we collaborated alongside the fashion department in order to confirm all information shared was correct.

Sustainability was considered in this project, as the owners of the existing space allowed us to reuse the existing furniture. In addition, we were kindly donated a large number of yellow scaffold tubes to use for the scaffolding walls.

Emiliana Lamce
Yogesh Chayani
Bianca Radoanca
Keeji Hondi-Medi
Shona Dably



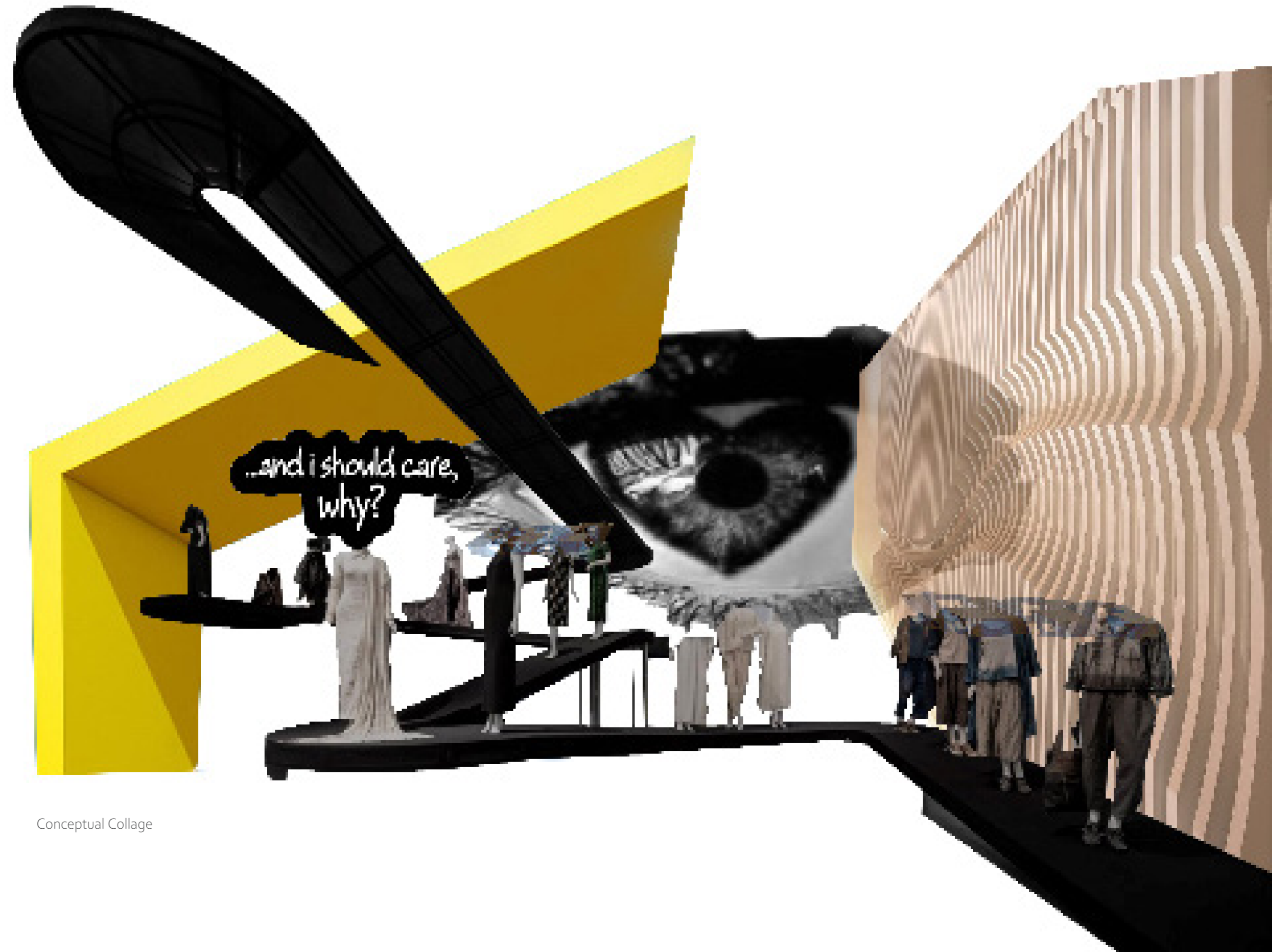
Initial ideas



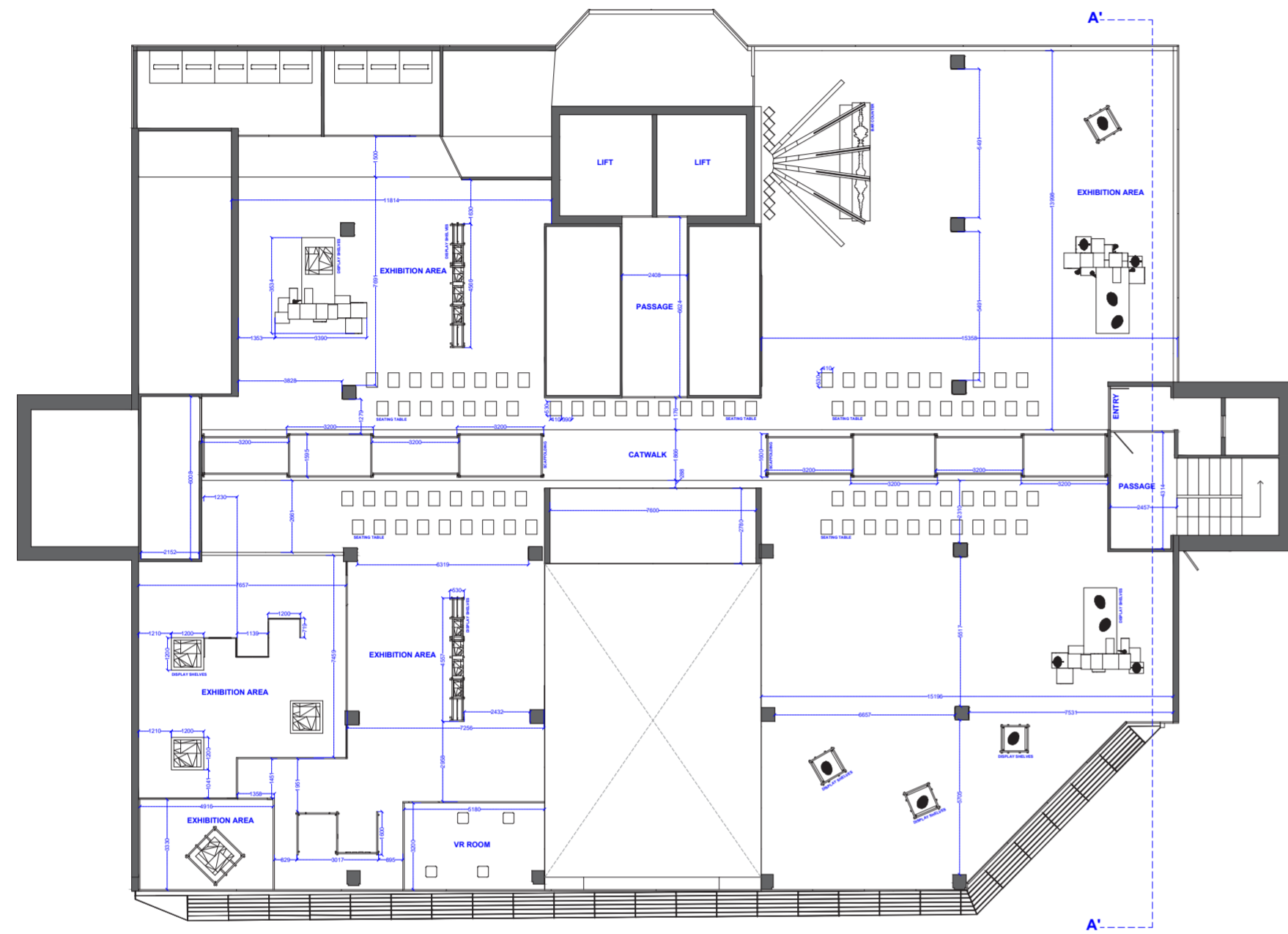
Material Palette



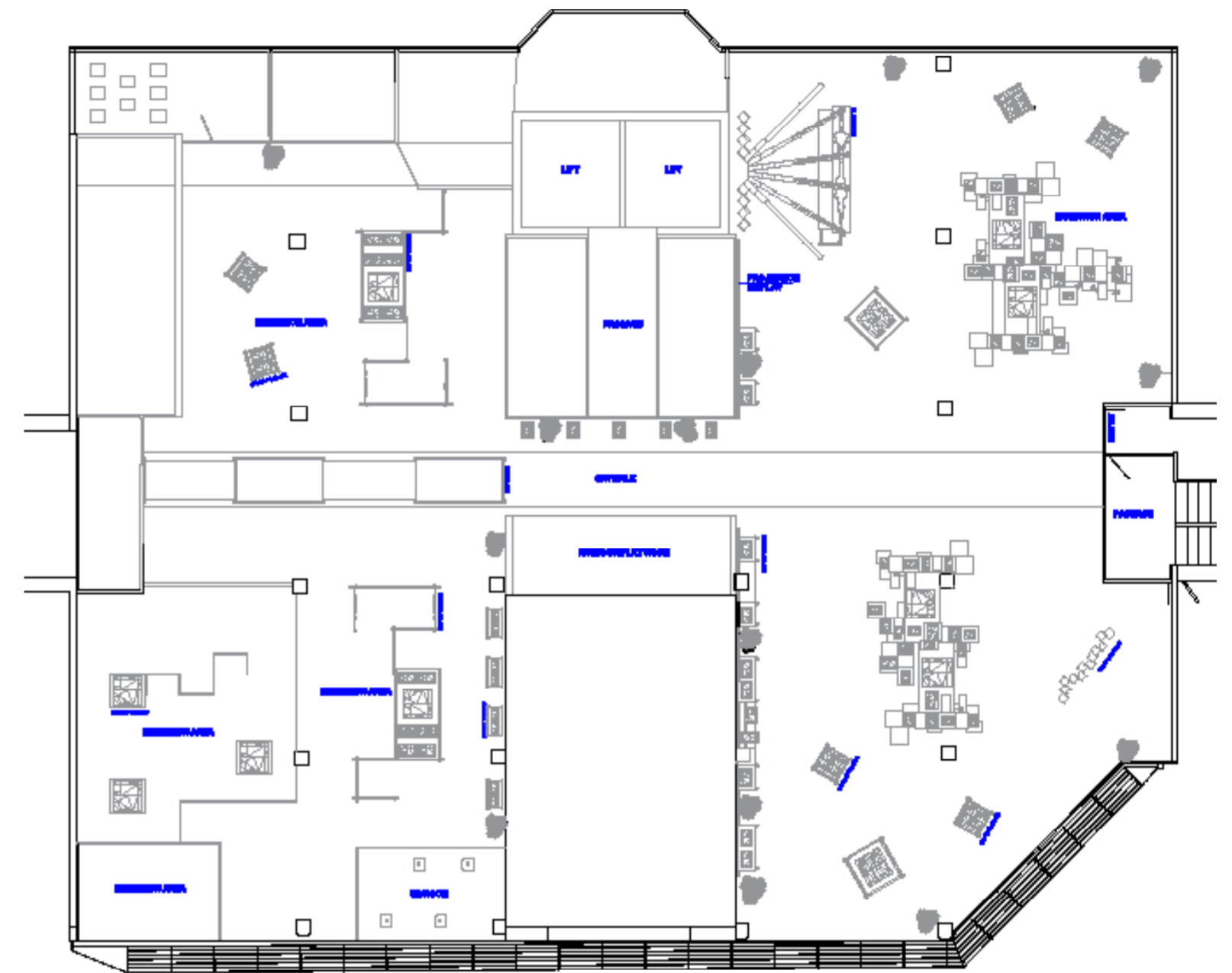
Collaborating with Fashion Department



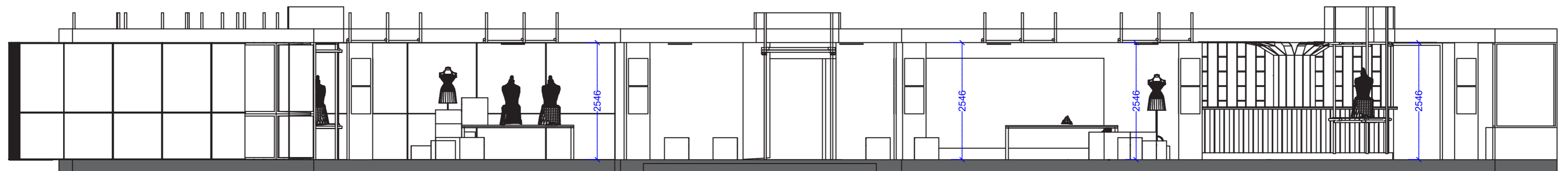
Conceptual Collage



Floor Plan

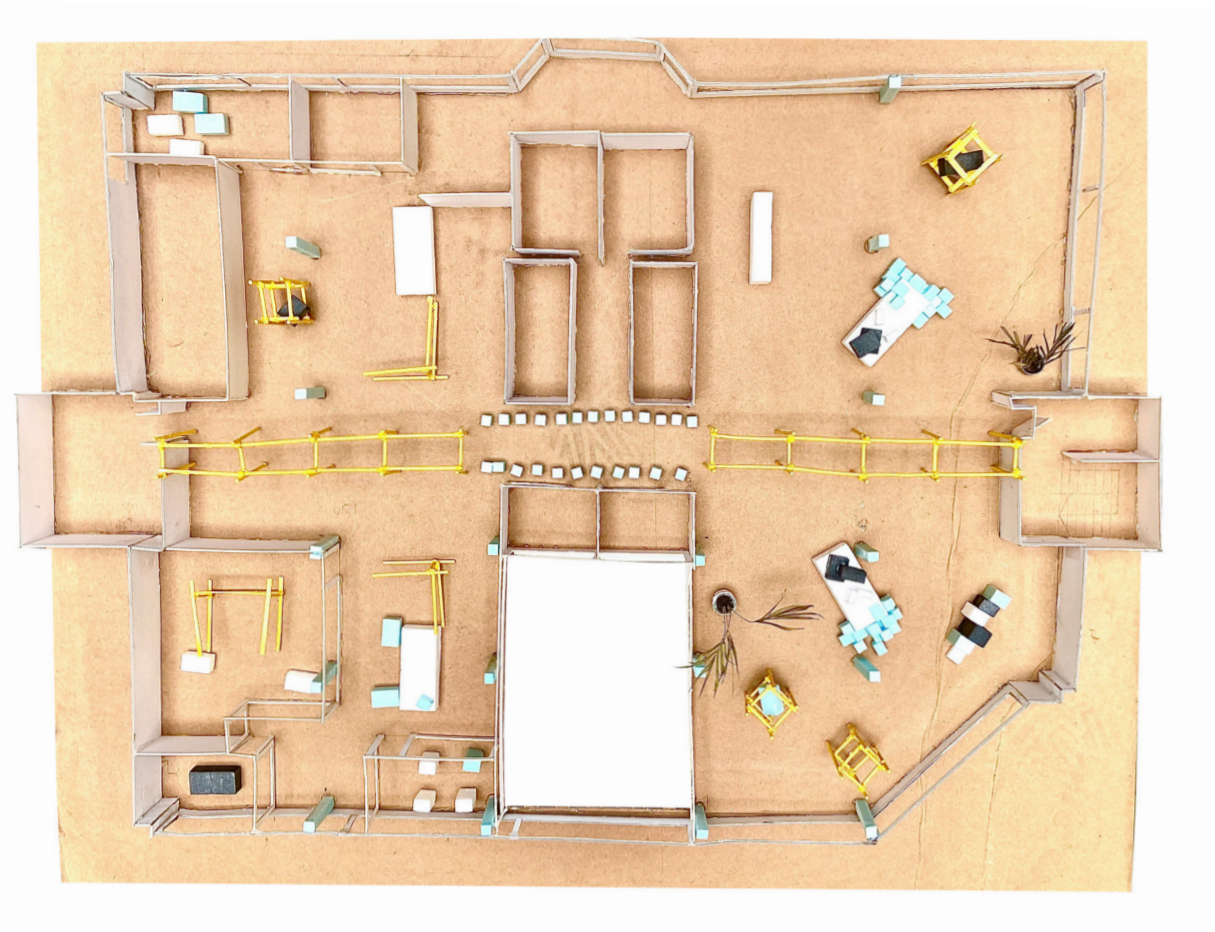


Floor Plan



SECTION:A-A'

Images of the physical model





Visuals showing the different uses of the space with the same structural elements being used.

