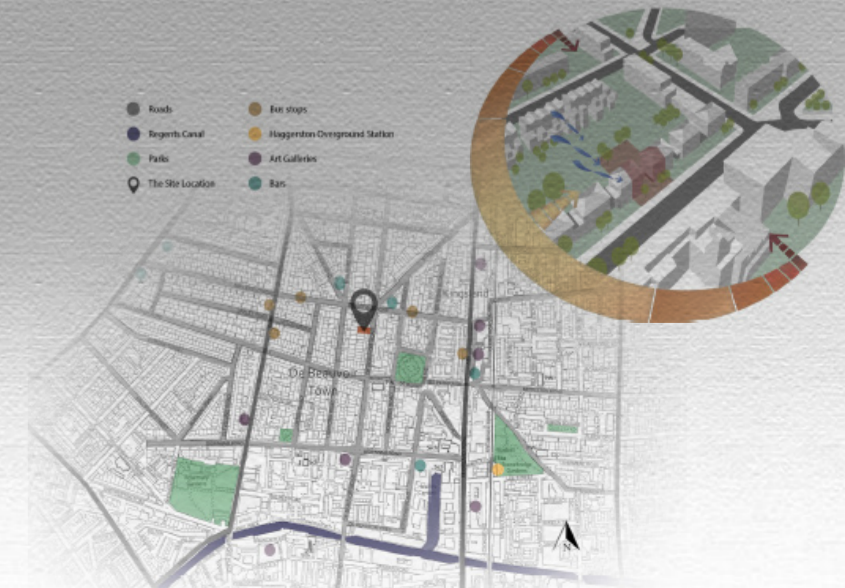


The brief was to design a new London residency headquarters for Mahler & LeWitt studios. It is a residency program that provides focussed and inspiring environment for artists of any field to experience new ways of working with other artists while experiencing the cultural and environmental beauty of the residency's location. The given site for the project are two residential semi-detached houses on De Beauvoir Road in Hackney, London. My mission was to connect the houses in the most sufficient way creating 6 studio apartments, communal workshop space, public gallery space and everything else suitable for an artist residency.

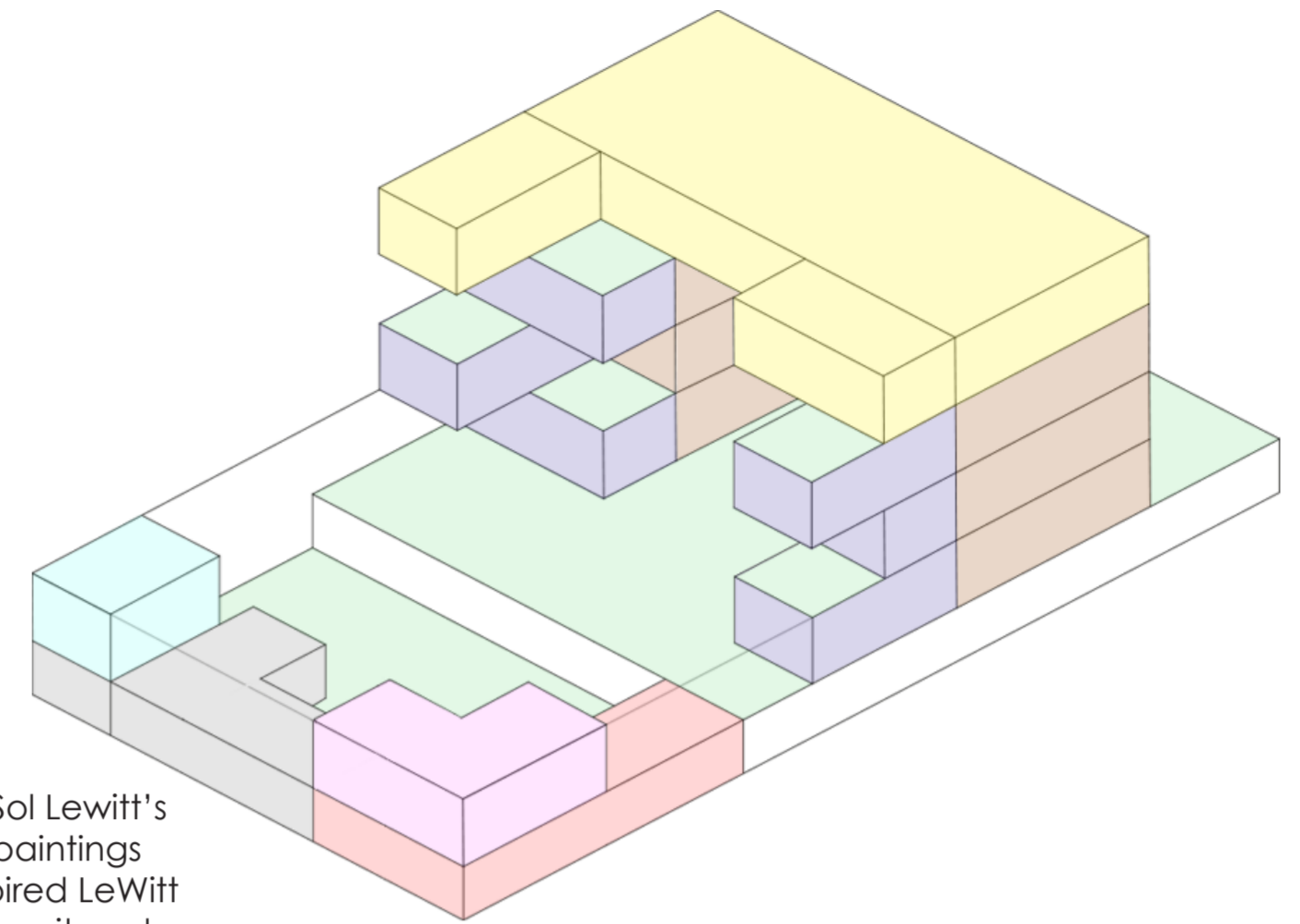






GROUND FLOOR PLAN

This design concept was inspired by Sol Lewitt's art work, not only his bright colourful paintings but also his 3D artwork. The cube inspired LeWitt throughout his career. He used it as a unit and made it a real tool. His artistic journey was based on development of serial volume networks, with which he played and explored the potentials of combinations. I started to explore cubes as a house extension and came up with a simple and functional combination that brings an extra workshop space in each studio apartment as well as balconies with a view of the garden.



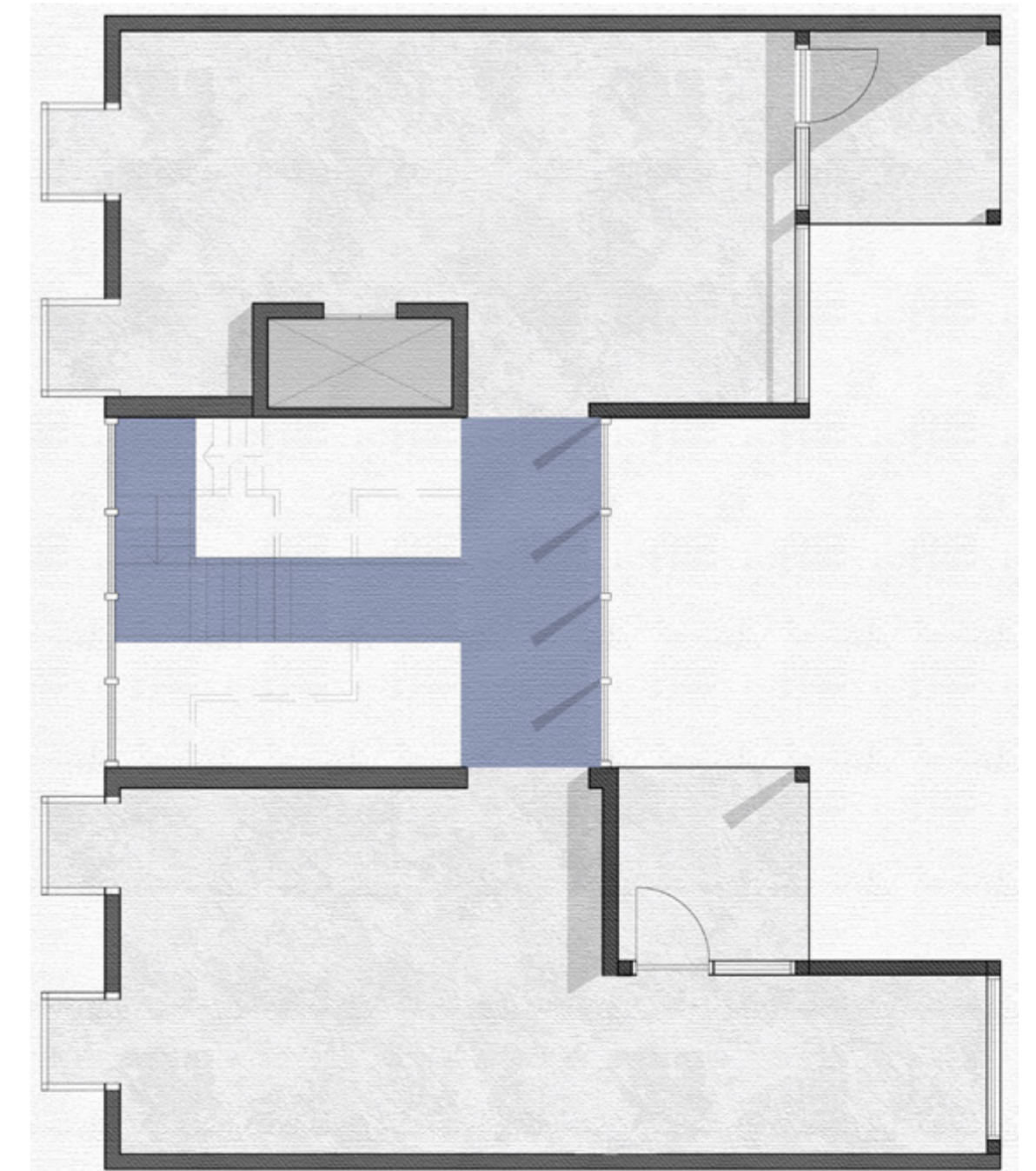
SCHEDULE OF ACCOMODATION



FIRST FLOOR PLAN

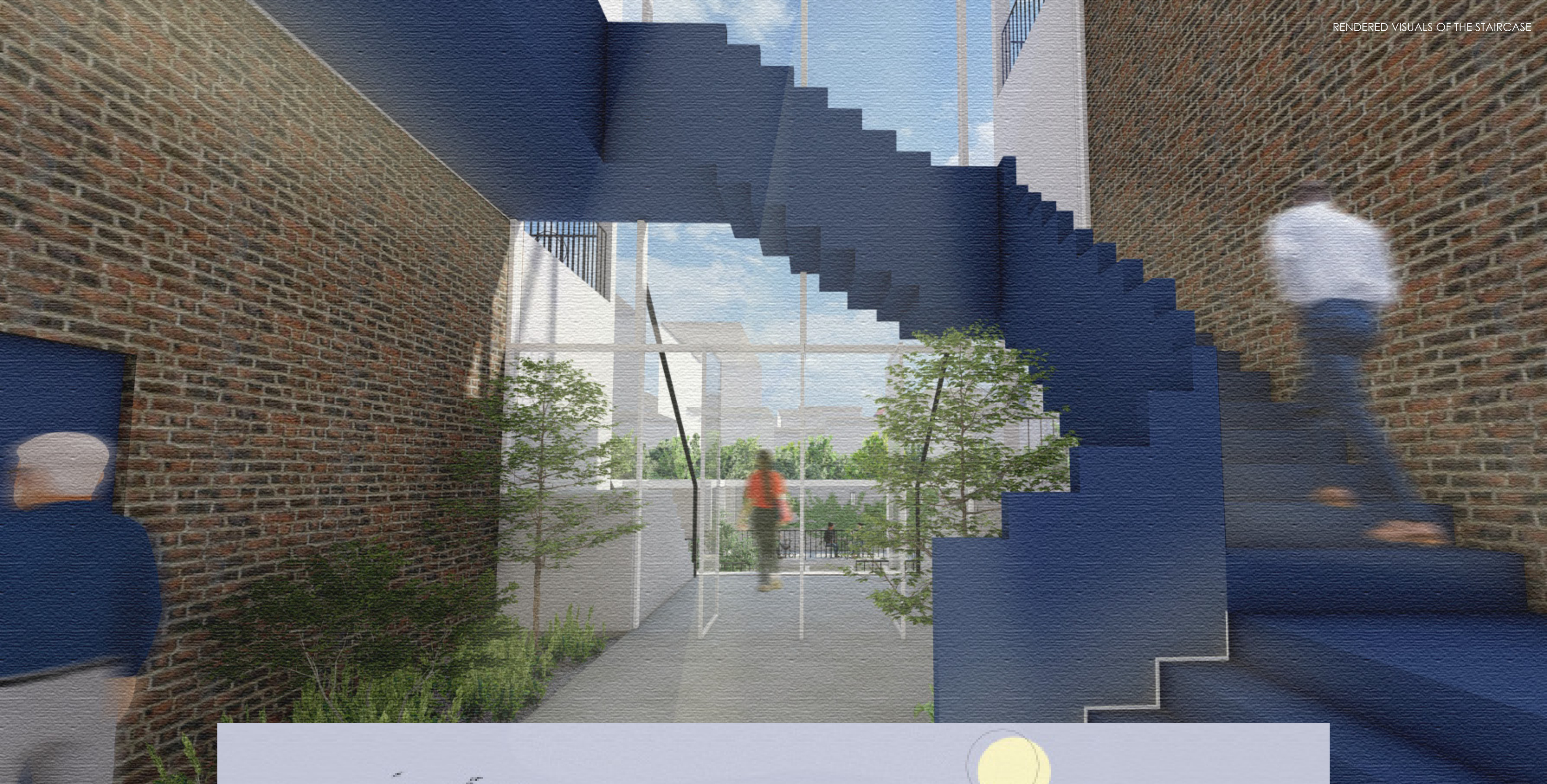


SECOND FLOOR PLAN



THIRD FLOOR PLAN













RENDERED VISUALS OF THE EXTERIOR AND THE INTERIOR

