

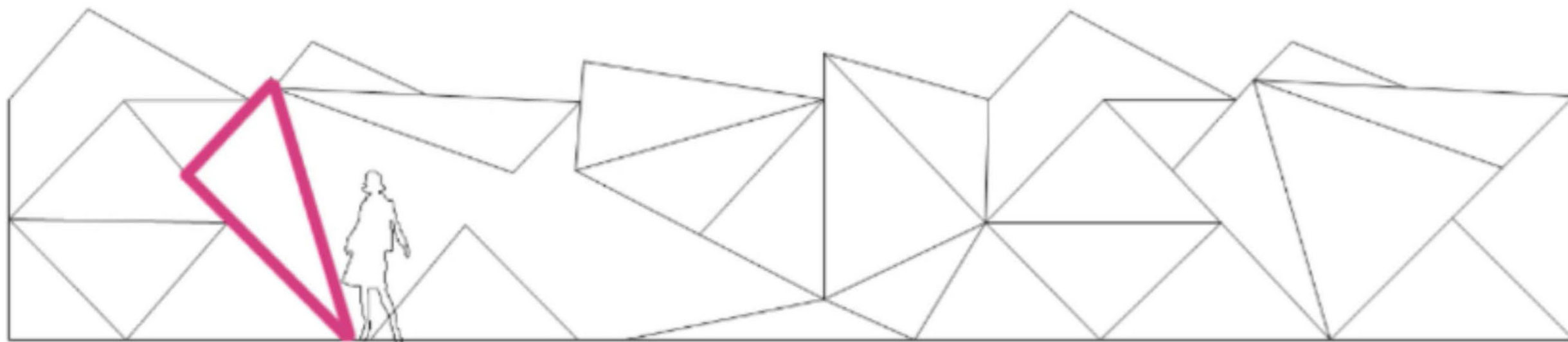
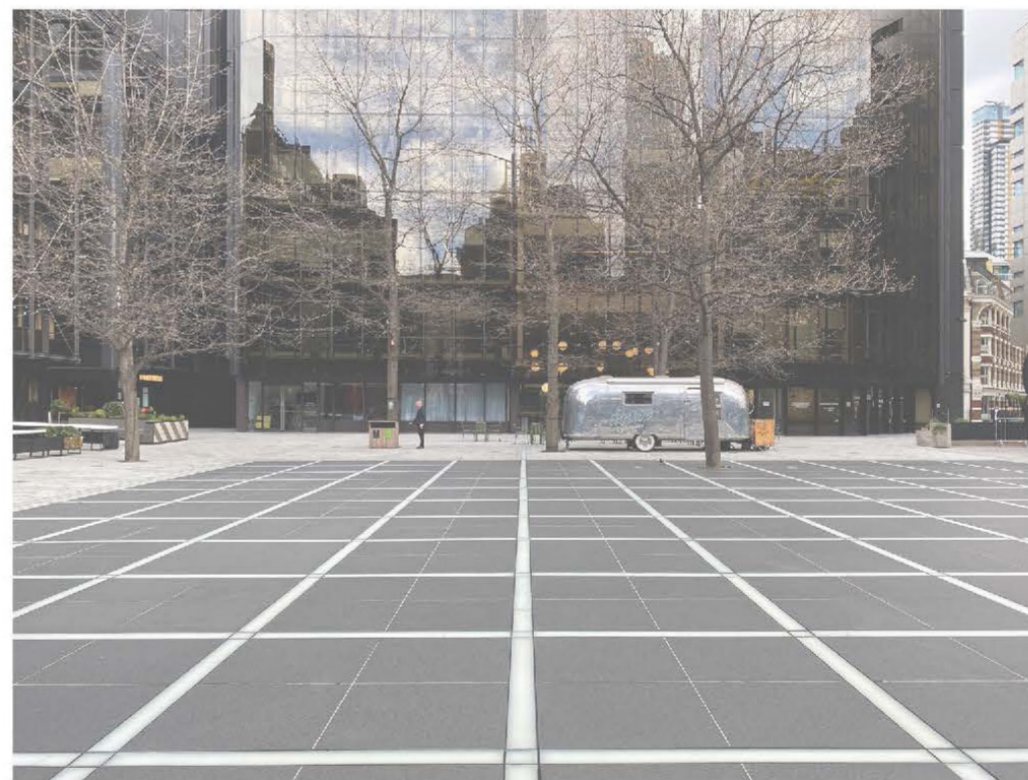
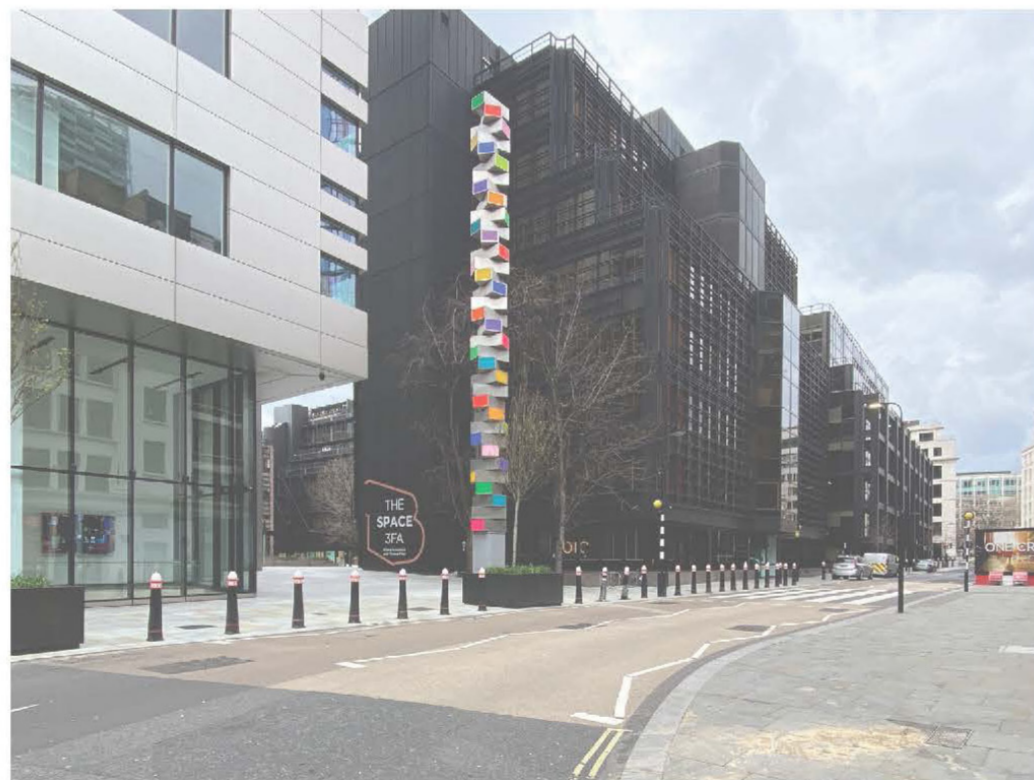
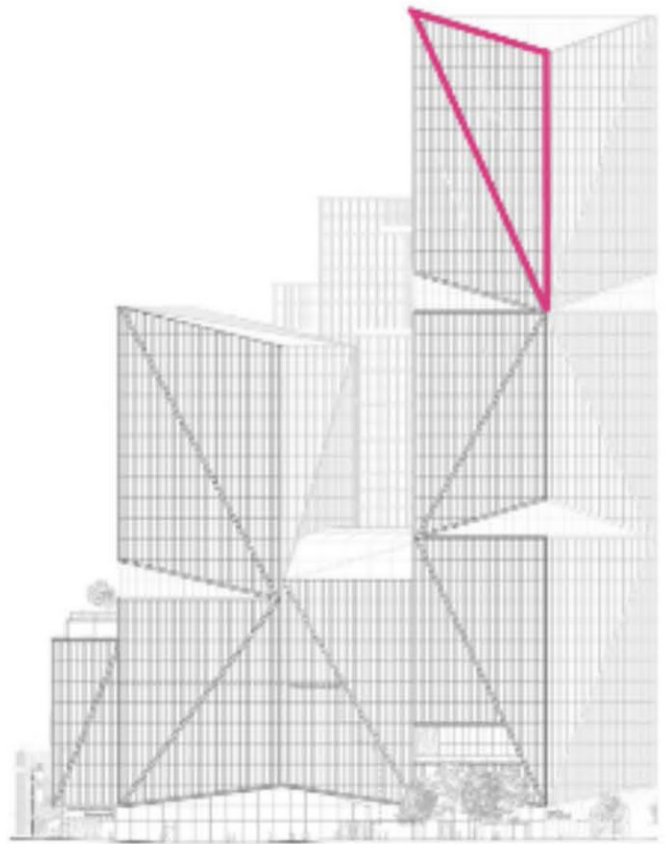
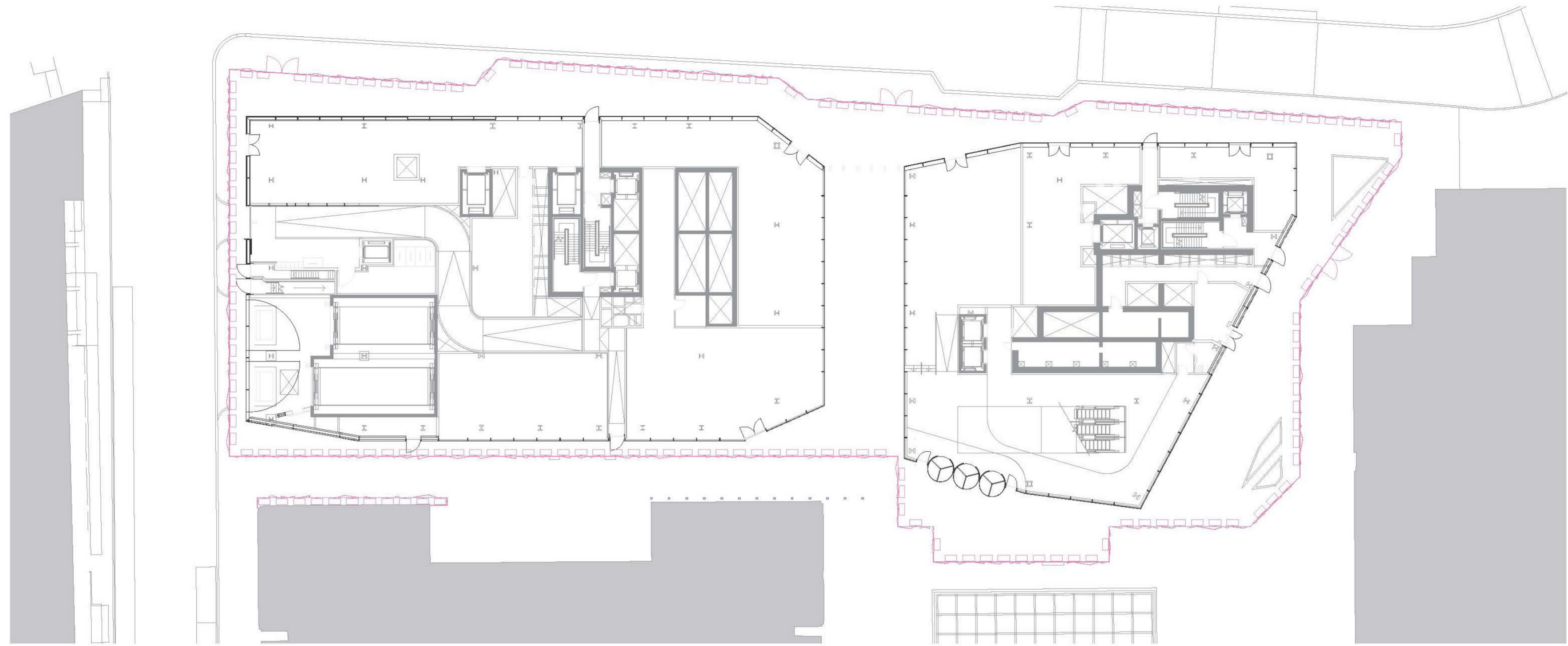


THIS WAS A CROSS DISCIPLINARY PROJECT SET UP BY THE CLIENTS WHO WERE BRITISH LAND AND PROPERTY DEVELOPER 3NX.

THE PROJECT BRIEF

TO DESIGN A HOARDING AND PEDESTRIAN TUNNEL AROUND THE DEVELOPMENT SITE OF 2 FINSBURY AVENUE. OUR TEAM INCLUDED ME AN INTERIOR DESIGNER AND TWO ARCHITECTS. WE COLLABORATED ON THIS DESIGN WHICH WE WANTED TO ILLUMINATE THE SITE AROUND THE BUILDING NOT ONLY MAKING IT SPECIAL BUT ALSO MAKING IT SAFE AT NIGHT. THE VISUAL LANGUAGE OF THE TRIANGLES WAS DRAWN FROM THE BUILDING ITSELF.

TRINITY

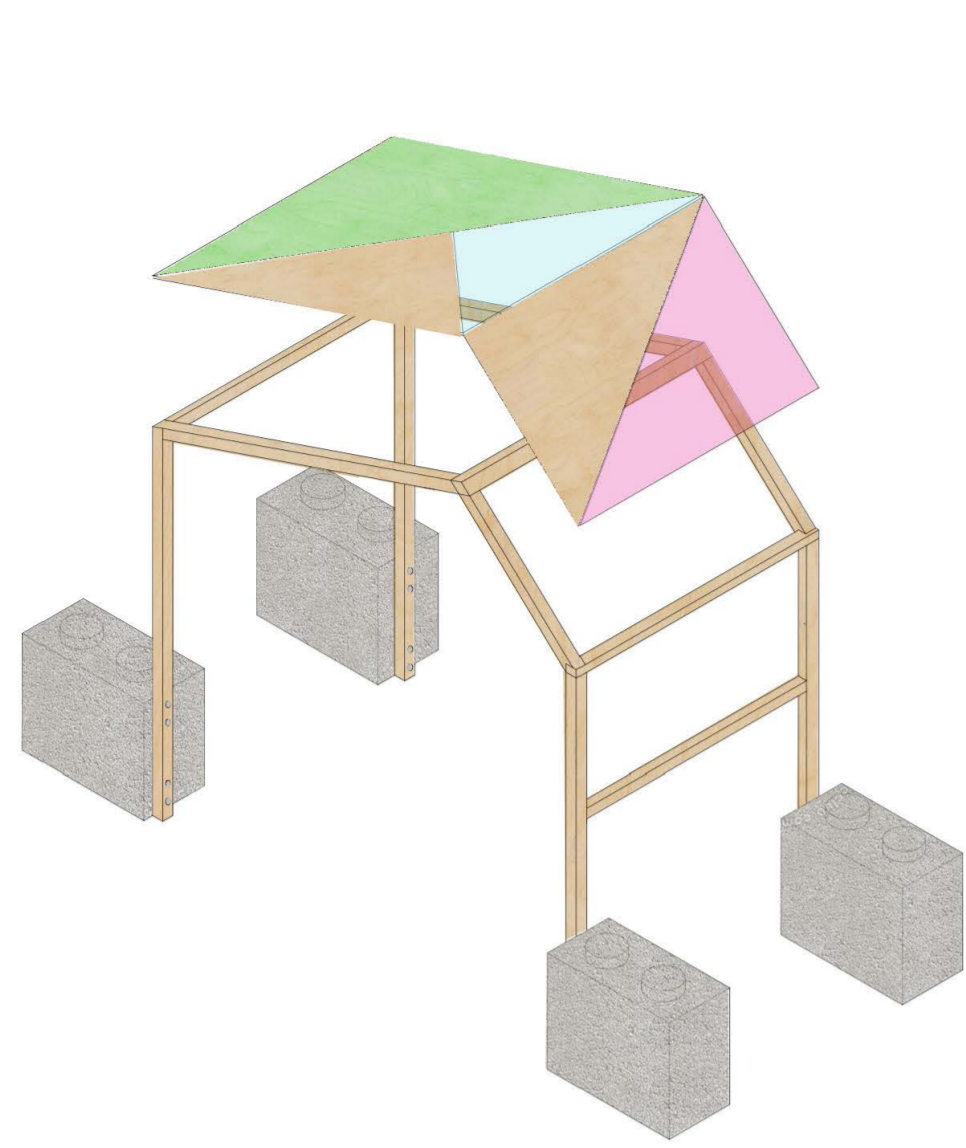


CONCEPT

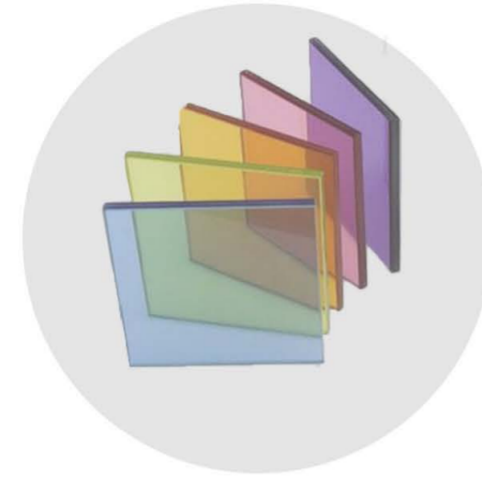
THE IDEA OF THE PROJECT IS TO UTILIZE EXISTING AND PLANNED ELEMENTS ON THE SITE AS INSPIRATION FOR A DYNAMIC, SUSTAINABLE, AND CREATIVE HOARDING PROPOSAL. THE DESIGN COMBINES THE 3 MAIN ASPECTS DESIRED, SUSTAINABILITY, DYNAMIC DESIGN LANGUAGE AND SECURITY.

THE COLOURS OF THE HOARDING ARE INSPIRED BY THE SCULPTURE AT THE SITE CALLED 'CHROMORANA' AND THE PROPOSED BUILDING FOR 2 FINSBURY AVENUE.

PROPOSED DESIGN MATERIALS



Plywood sheets



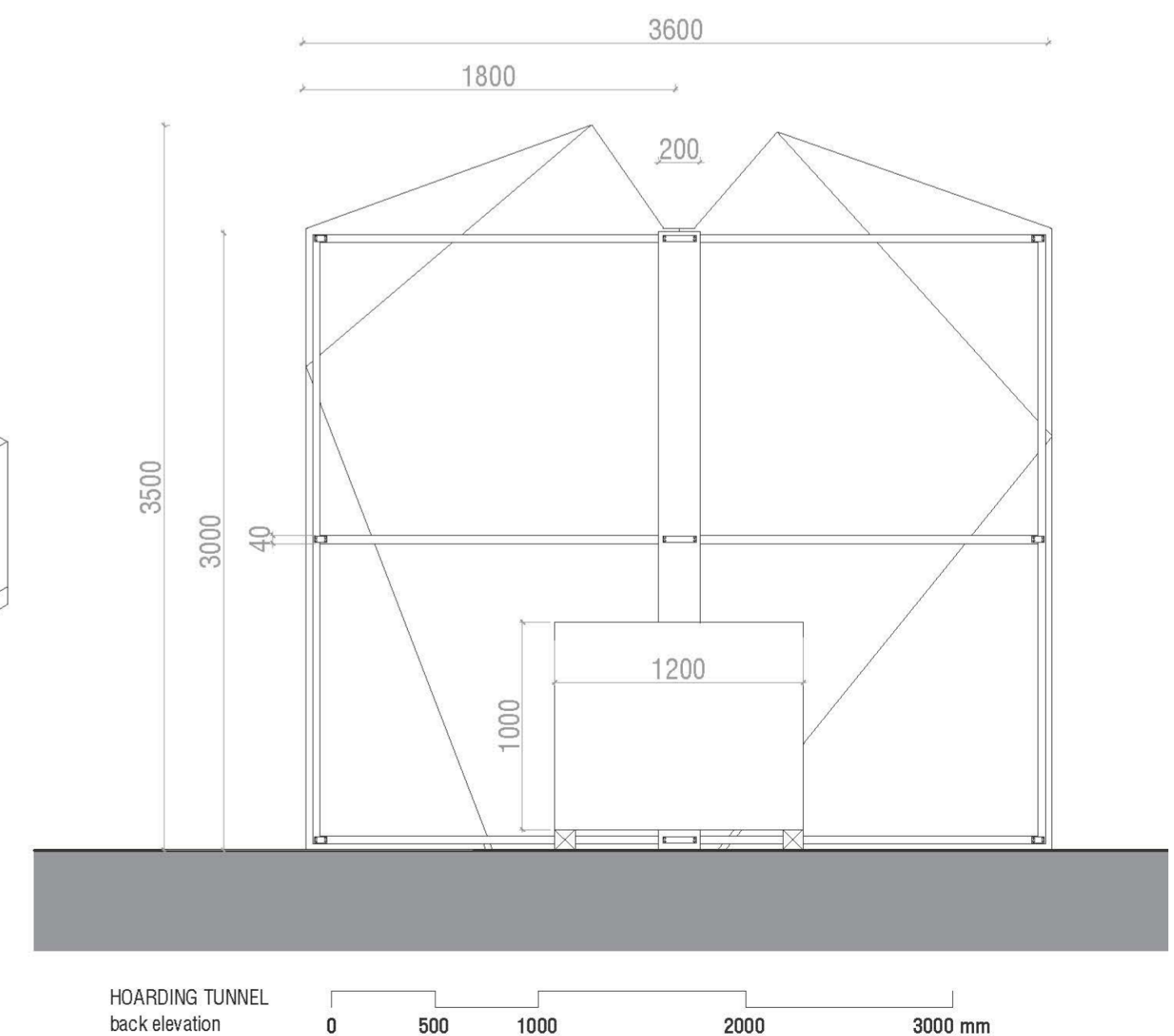
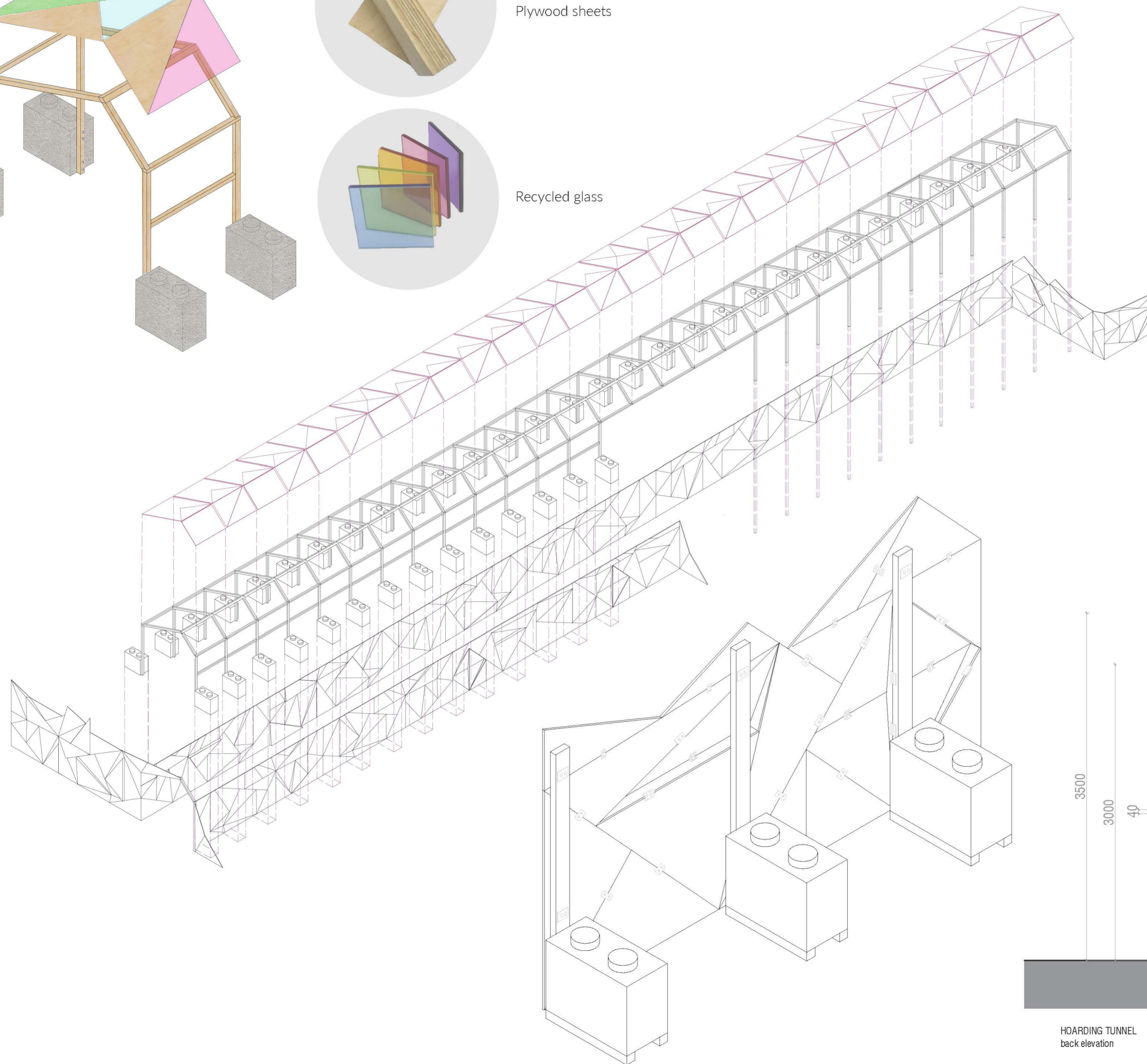
Recycled glass

THE FRAMEWORK OF THE STRUCTURE IS MADE OF RECYCLED TIMBER BEAMS

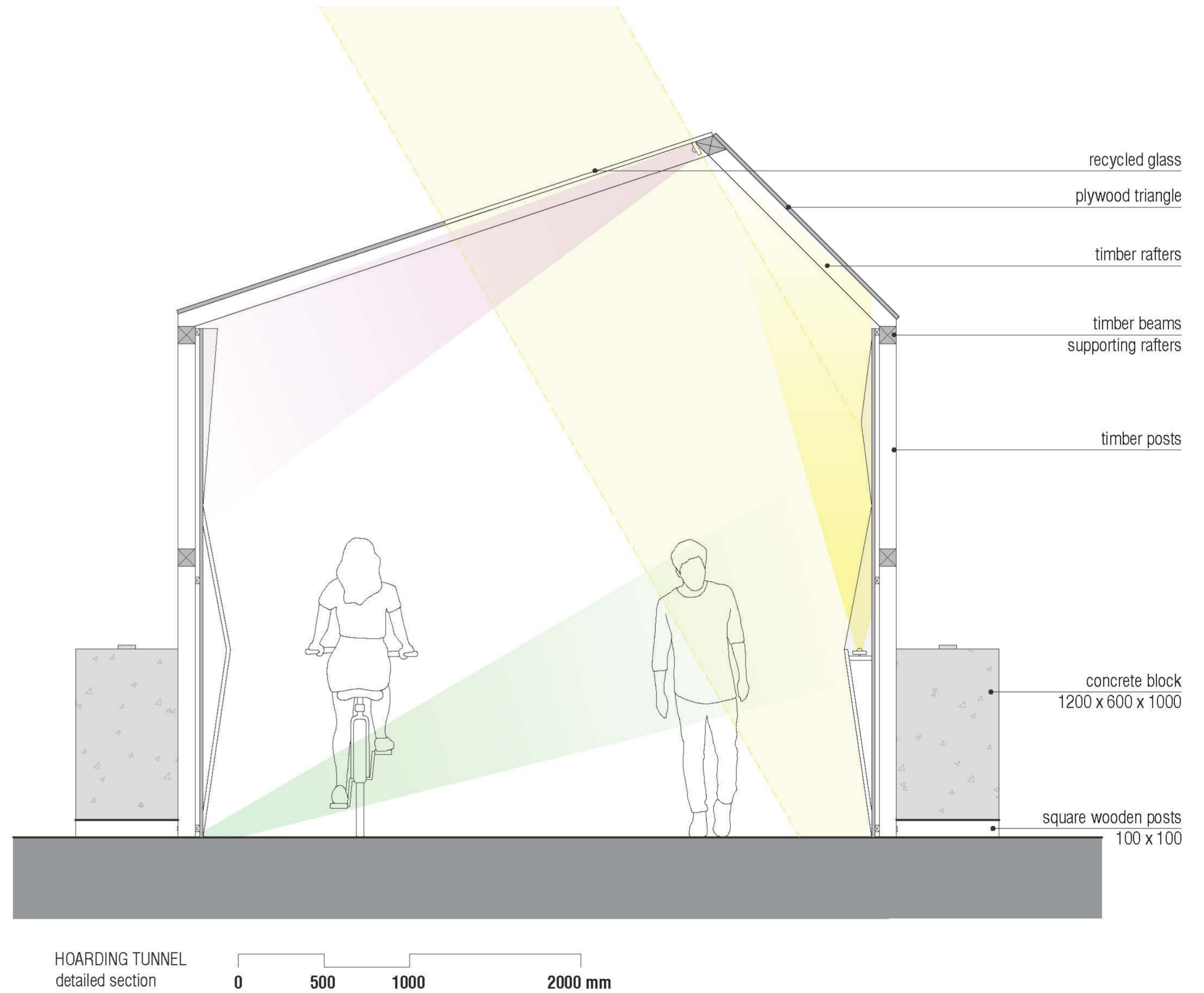
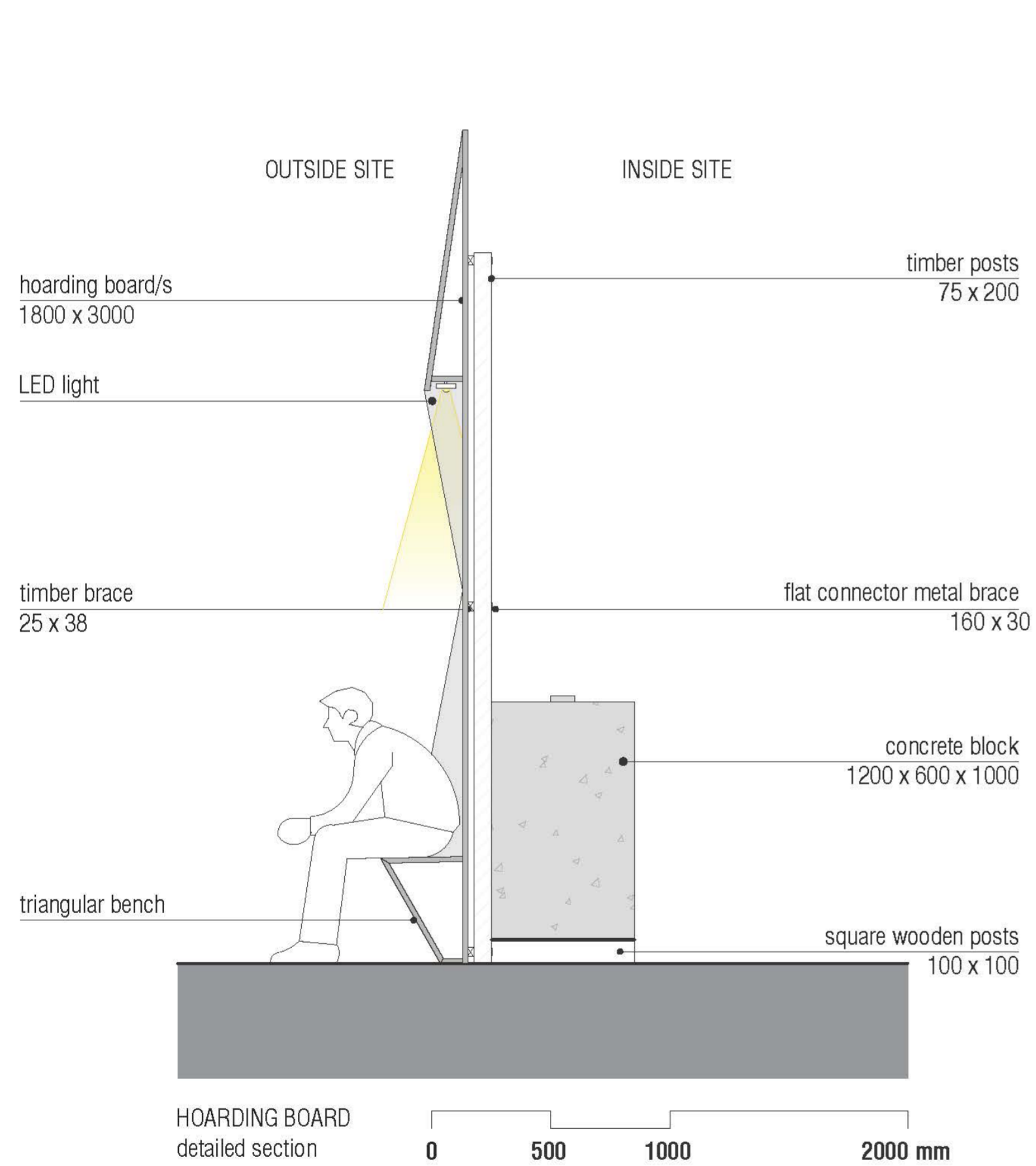
THE CLADDING - 22MM PLYWOOD SHEETS AND CUT TO INTO TRIANGULAR SOME WITH A NATURAL FINISH AND SOME FINISHED IN STARGLOW PAINT (A NON-TOXIC WATER-BASED FORMULA)

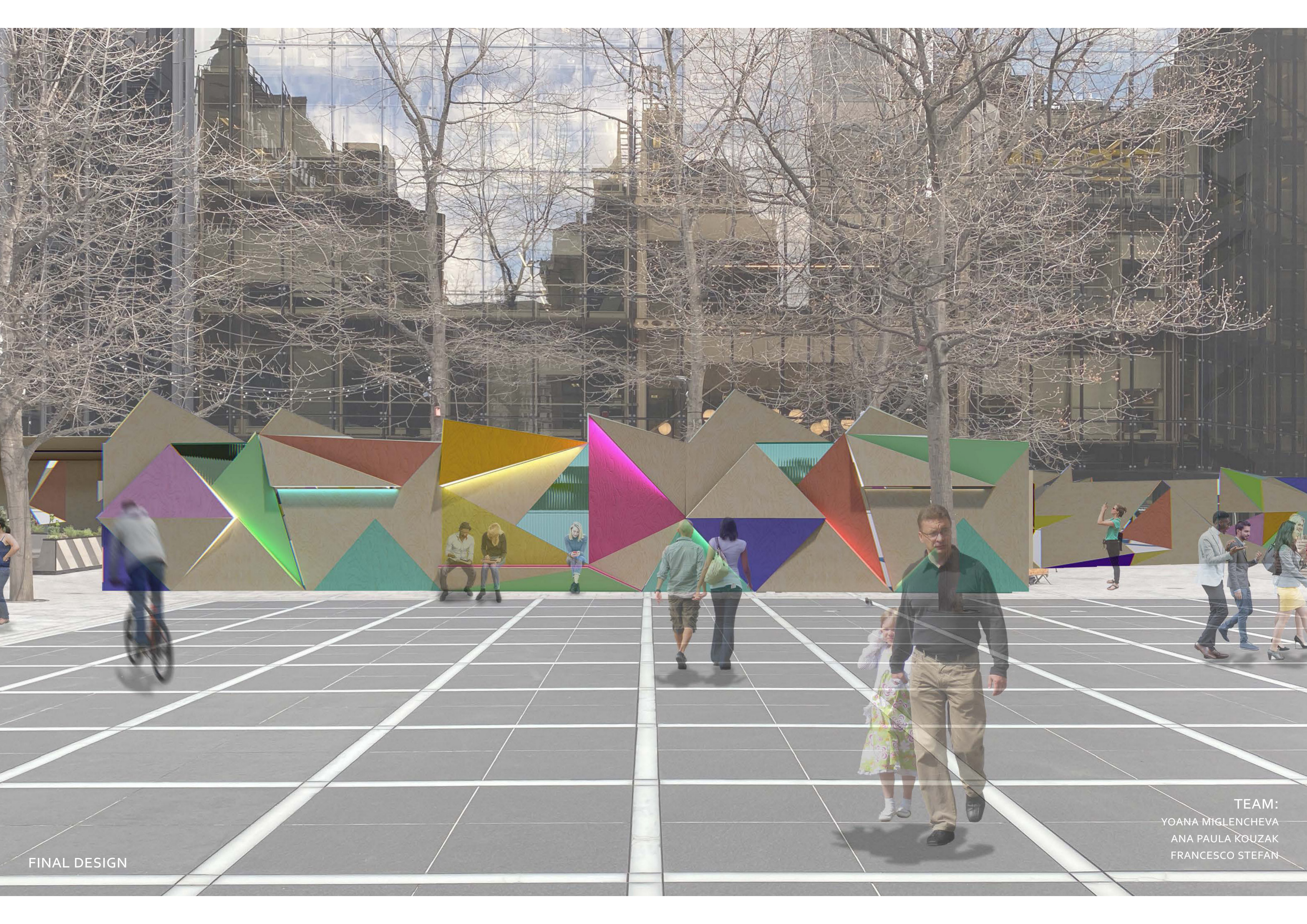
RECYCLED GLASS FROM THE BUILDING. PAINT THE TRIANGLES

LIGHTING – THE HOARDING AND THE TUNNEL WILL BE ILLUMINATED WITH LED LIGHTING



THE FINAL DESIGN USES TRIANGULAR SHAPES AND RECYCLED GLASS FORMED INTO TRIANGULAR PANELS, WITH CREATE COLOURFUL ILLUMINATED FACETTED THREE-DIMENSIONAL PANELS WHICH INVITE THE PEDESTRIANS TO PEEK INSIDE THE CONSTRUCTION SITE. THE DESIGN BRINGS COLOUR TO THE SITE AND WHEN ILLUMINATED BY THE COLOURFUL LED LIGHTS, IT WILL BRING THE HOARDING AND THE TUNNEL TO LIFE. MAKING IT A DESTINATION POINT FOR INSTAGRAMMER WANTING TO TAKE IMPACTFUL IMAGES WHEN VISIT TO THE BROADGATE CAMPUS.





FINAL DESIGN

TEAM:
YOANA MIGLENCHEVA
ANA PAULA KOUZAK
FRANCESCO STEFAN