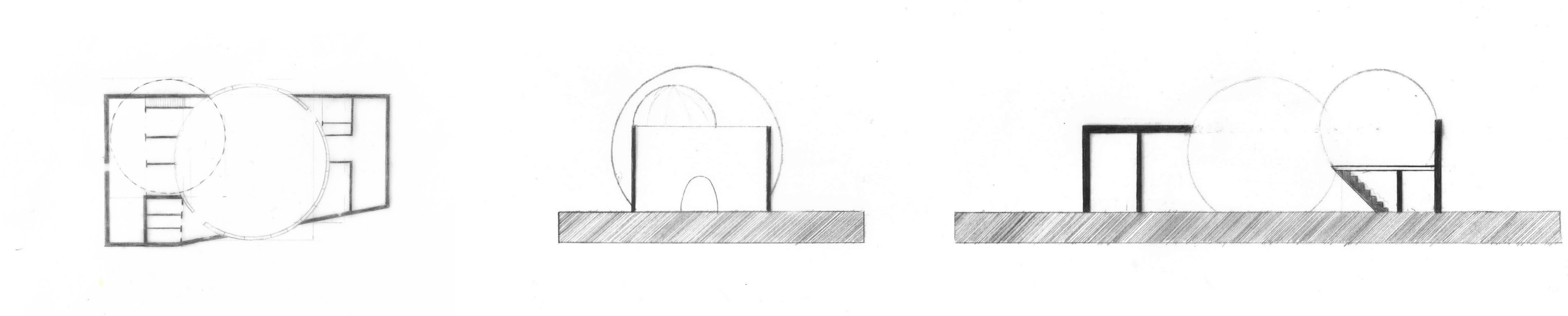


DINNER AND A SHOW

Roisin King

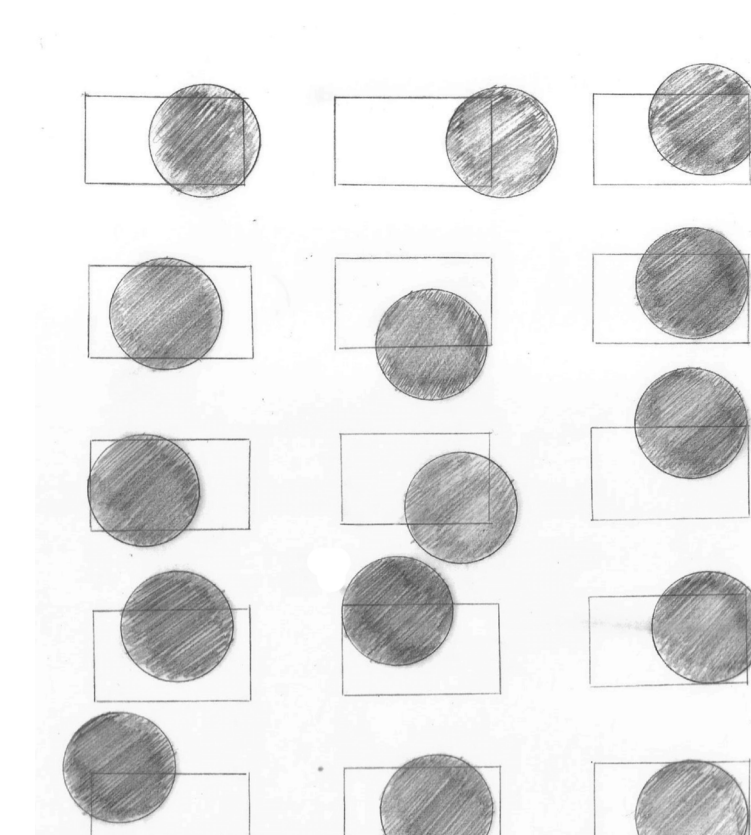
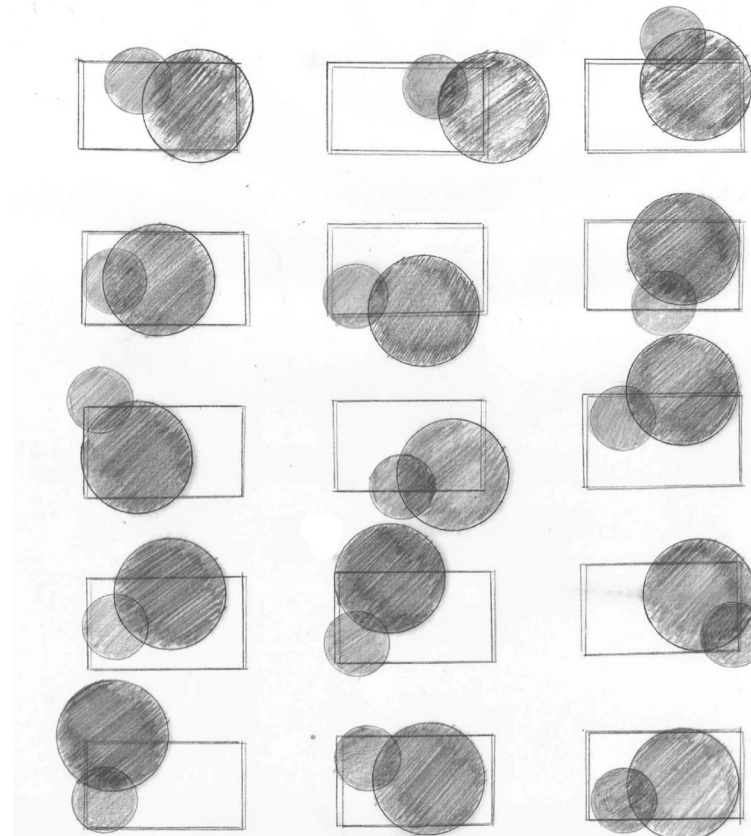
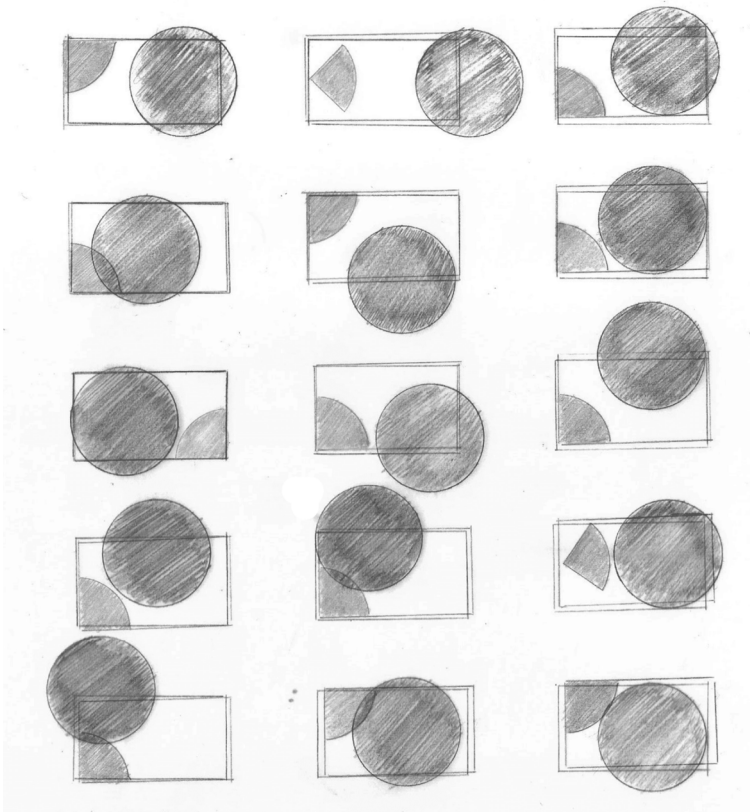


My Theatre design takes the process-led action of drawing spheres within rectangles to produce form. The resulting spaces become a diagram of sorts within the site boundary that determine how the floorplan layout works in plan and section. I was interested in taking a local existing young dance community and comedy club scene and providing them with a flexibly and dynamic new space that blurs the boundaries between one discipline and another.

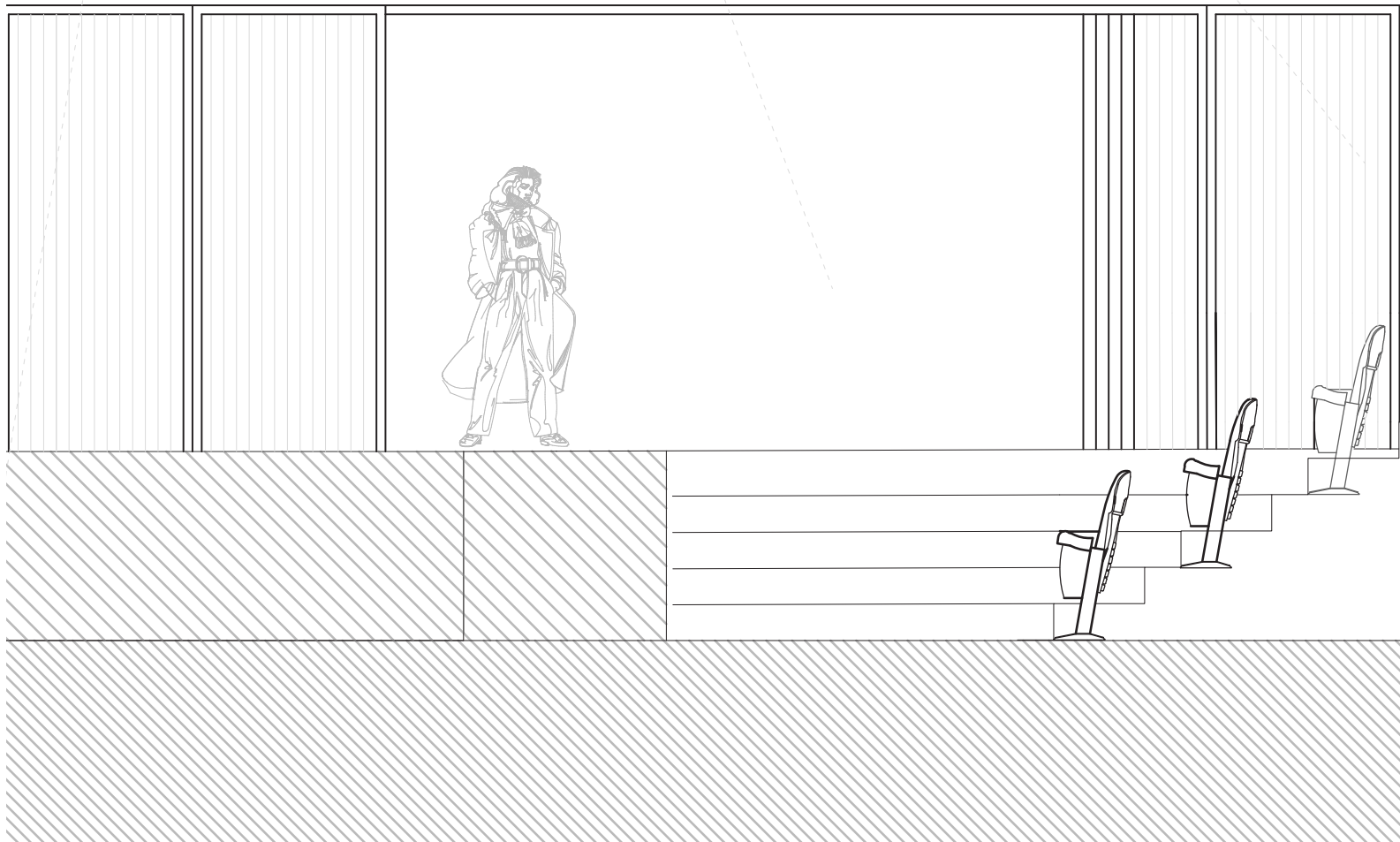
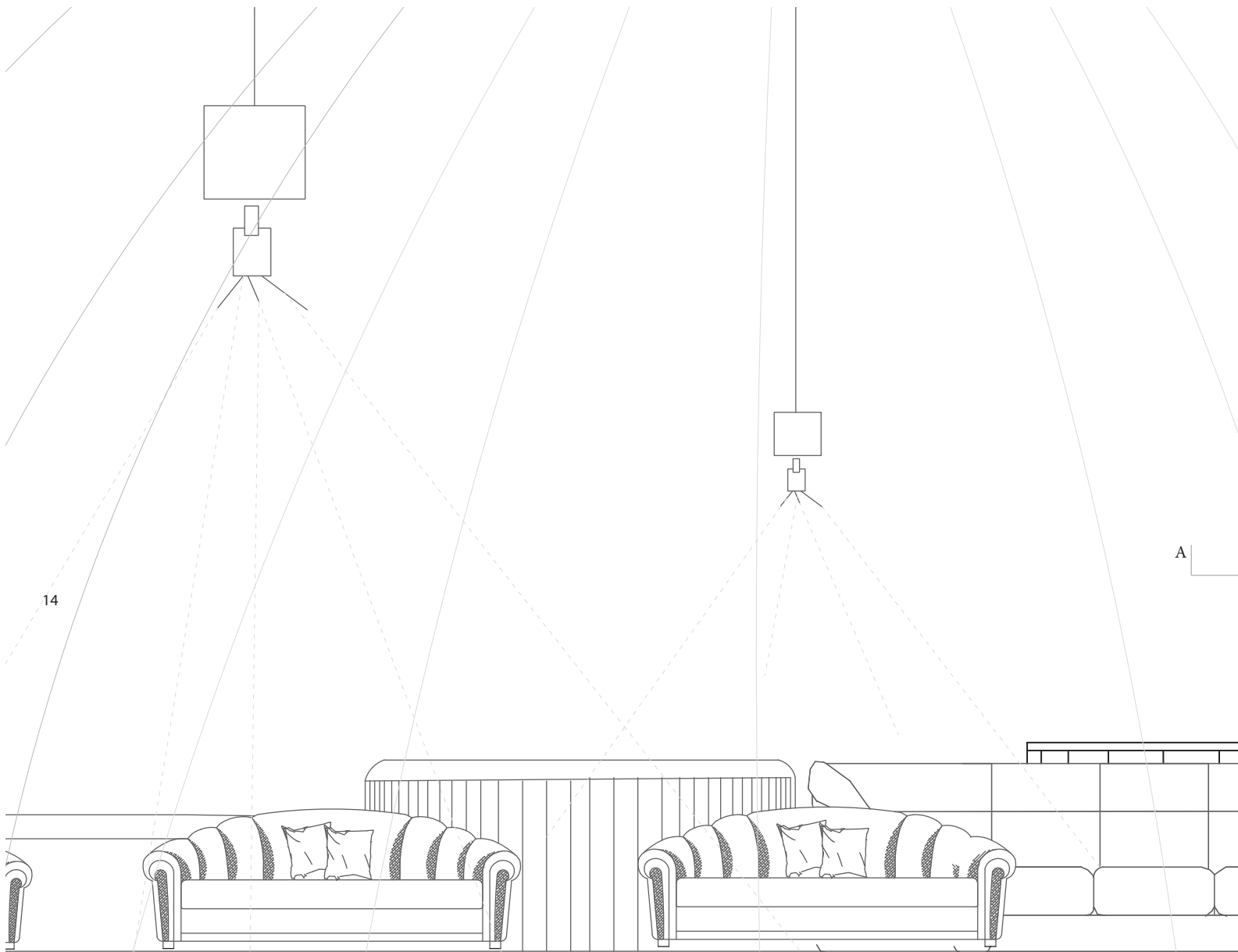
I wanted to promote a sense of intersectionality between cultures and programs that makes a single venue open to many exciting aspects of a night out and a day of activities for all ages.



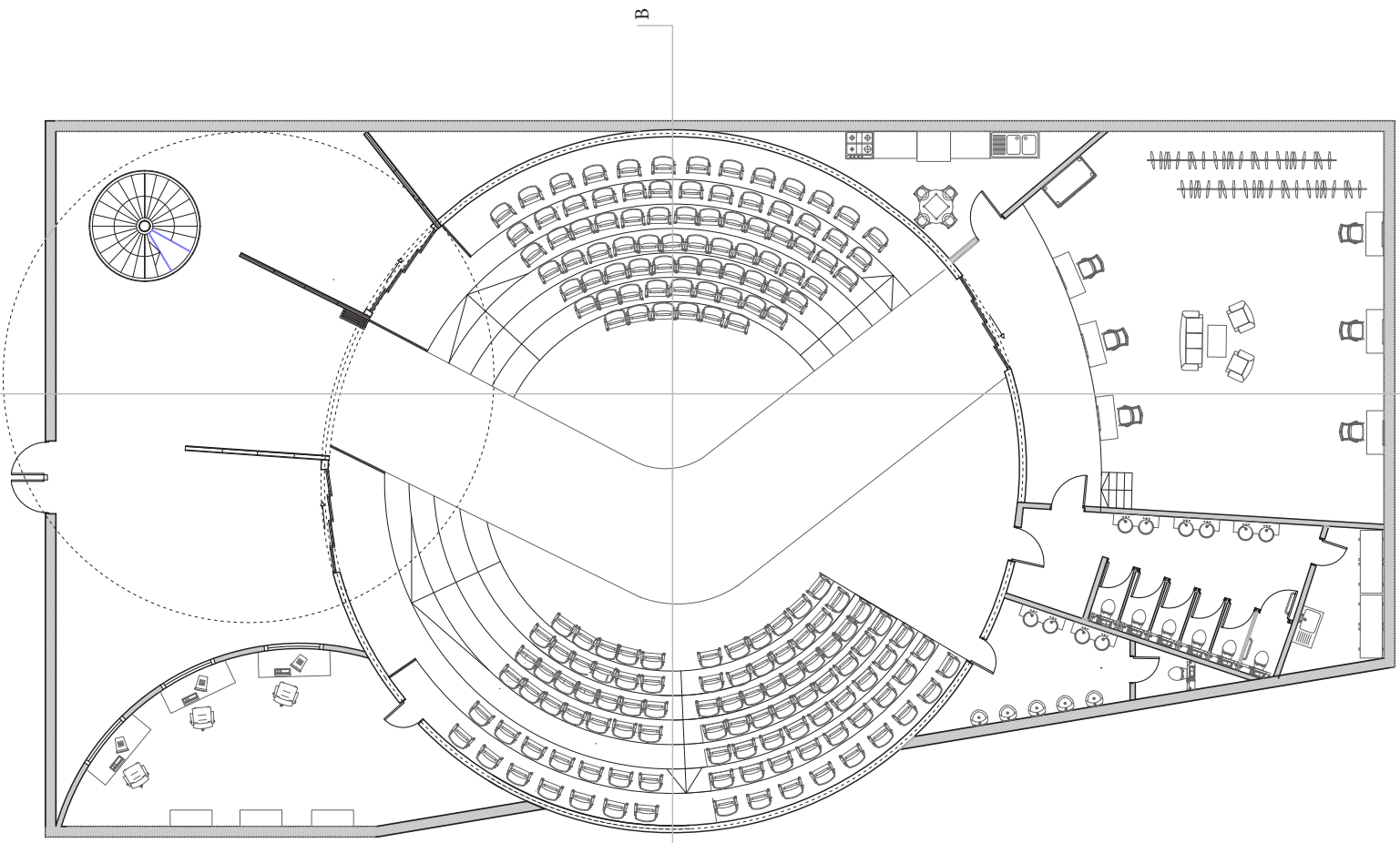
DESIGN DEVELOPMENT



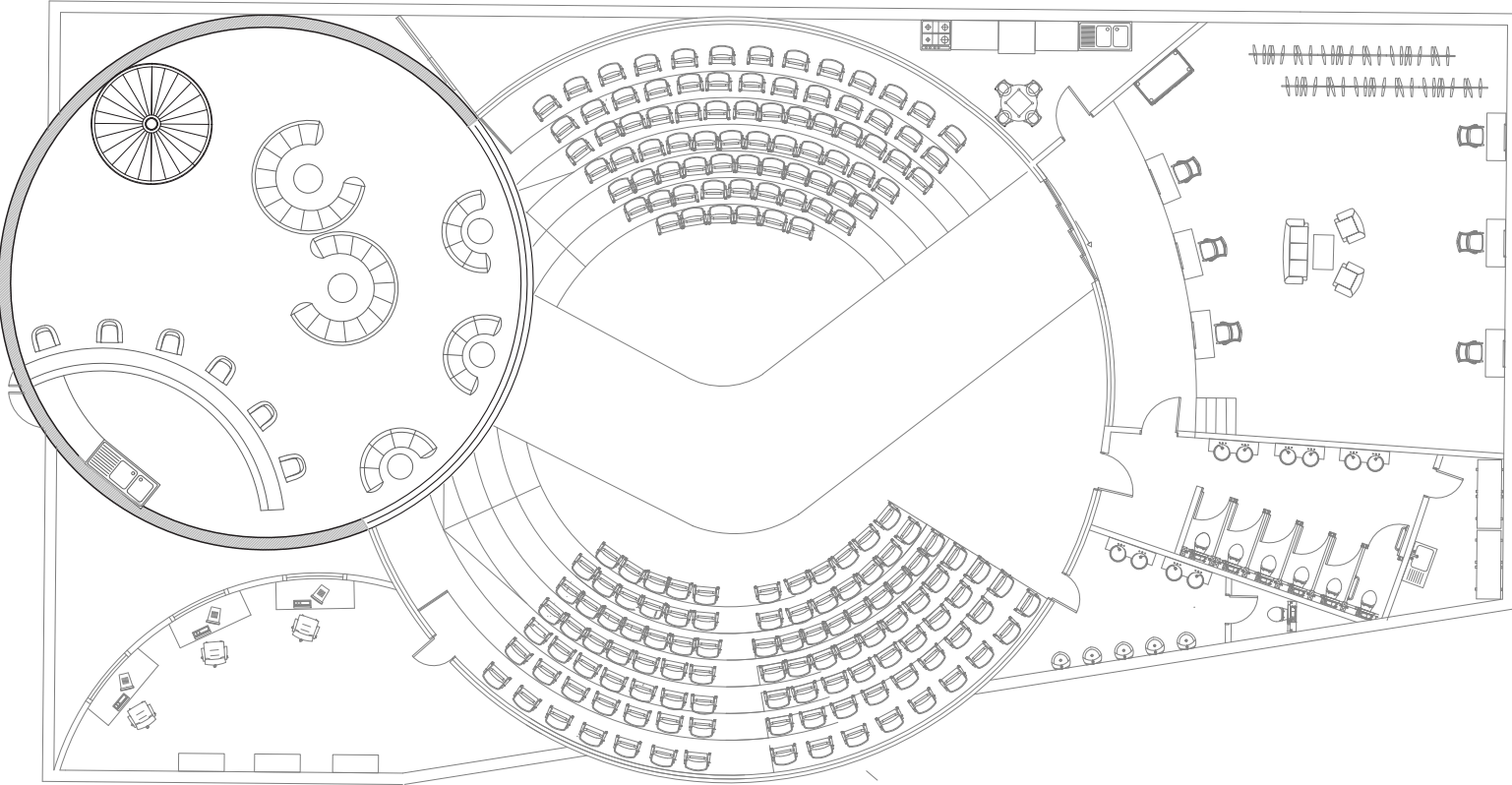
LAYOUT STRATEGY PLANS



ZOOMED IN DETAILS

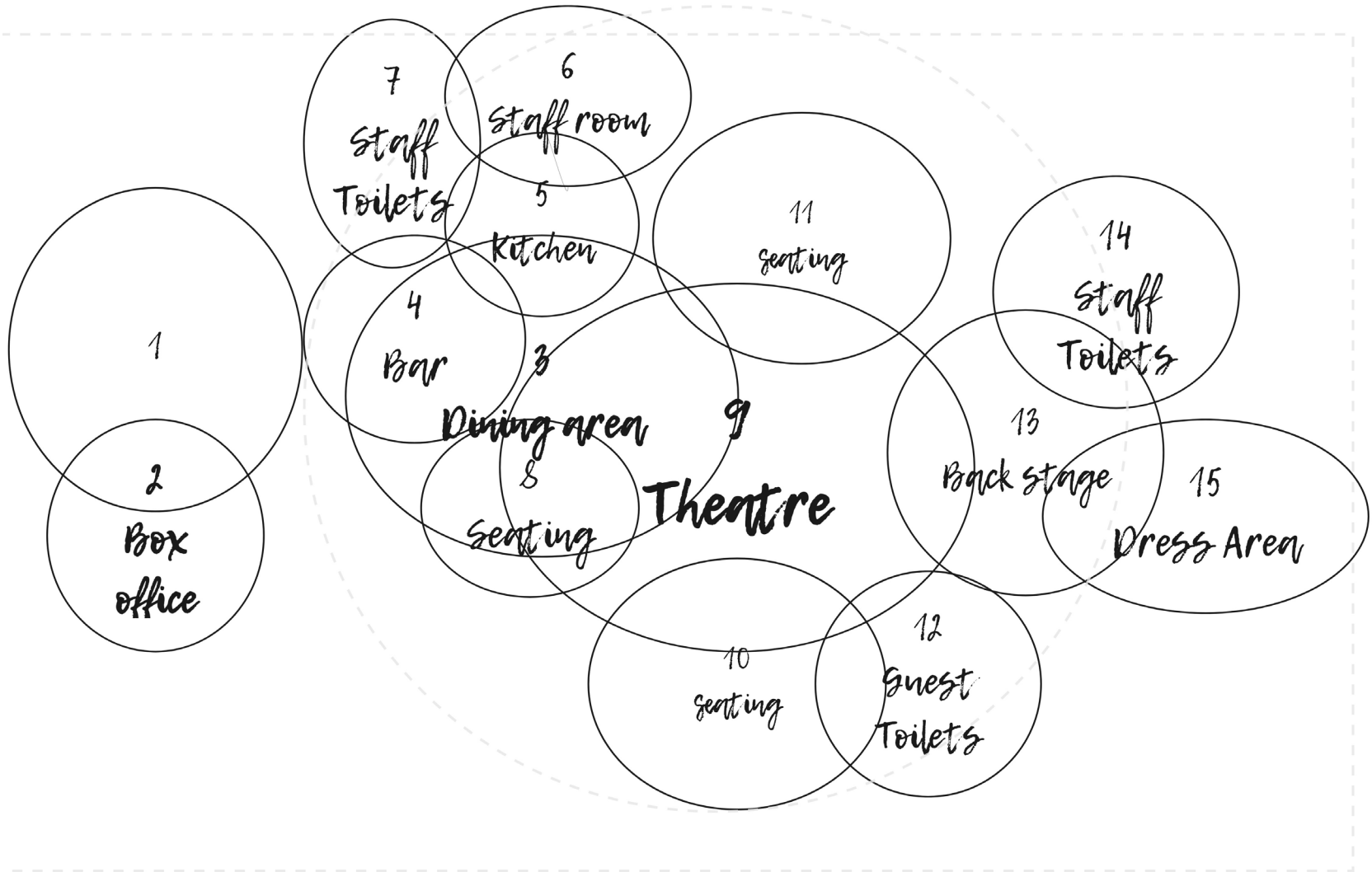


GROUND LEVEL PLAN

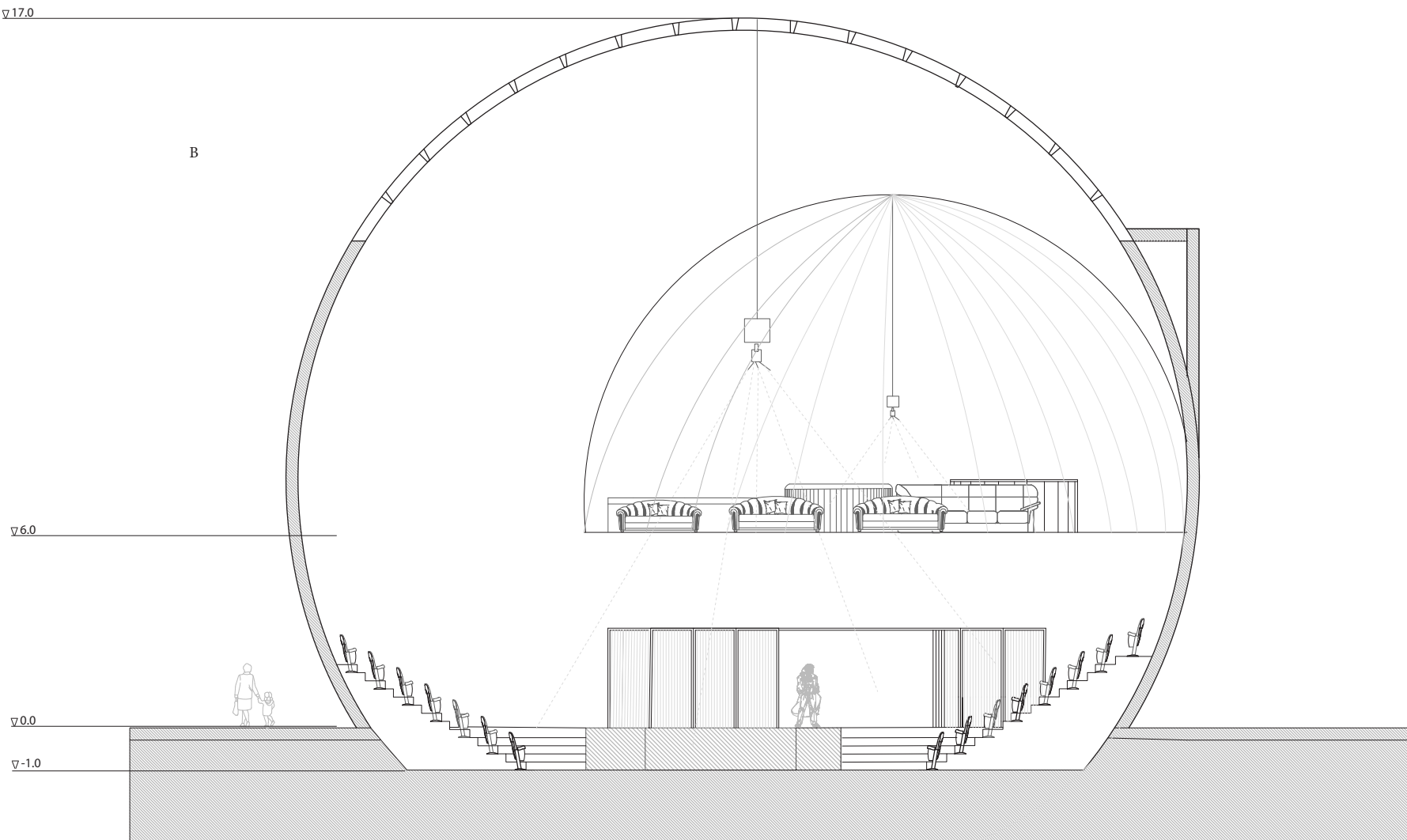


FIRST LEVEL PLAN

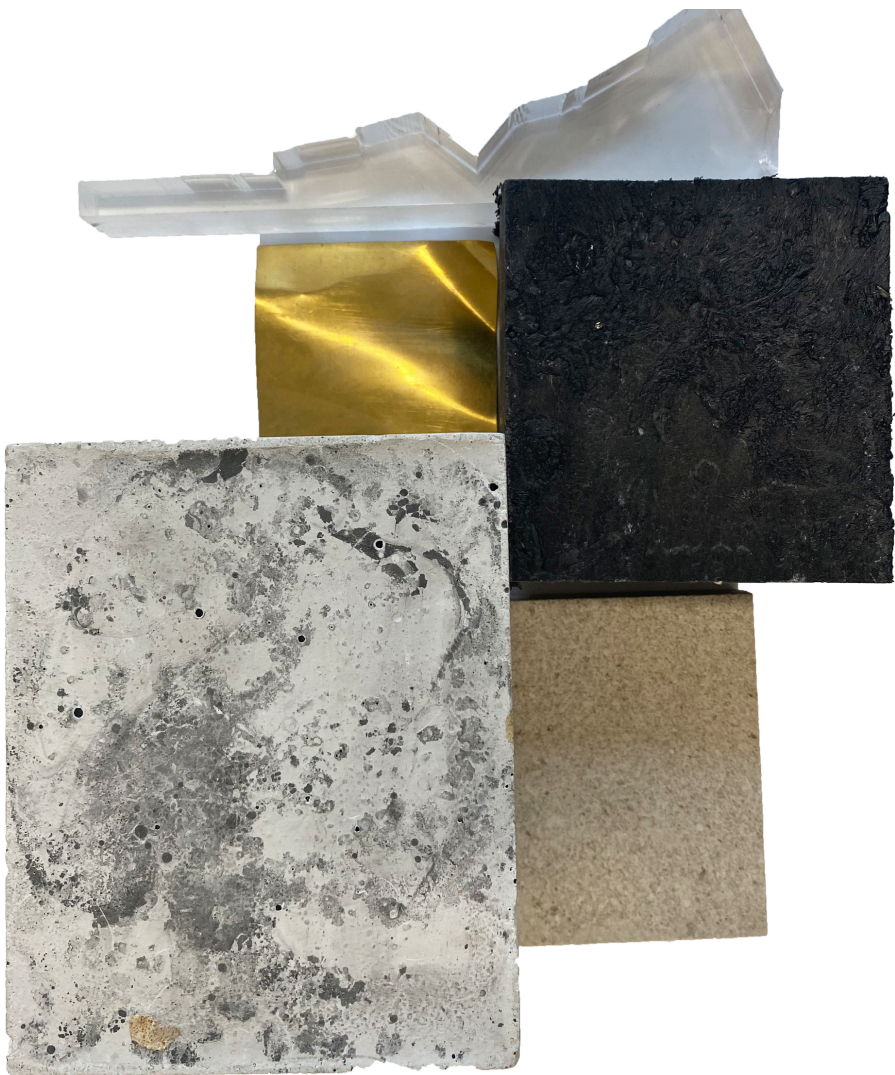
DESIGN DEVELOPMENT



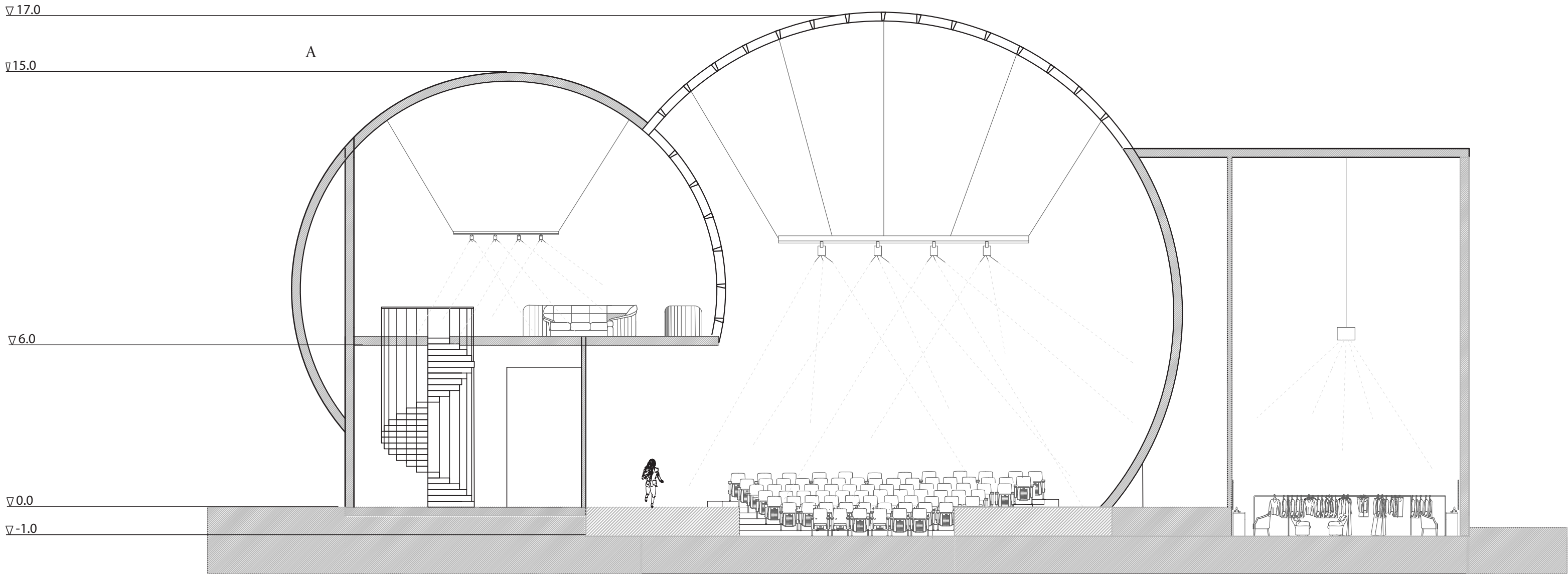
SCHEDULE OF ACCOMMODATION



SECTION B-B



MATERIAL PALLETTE



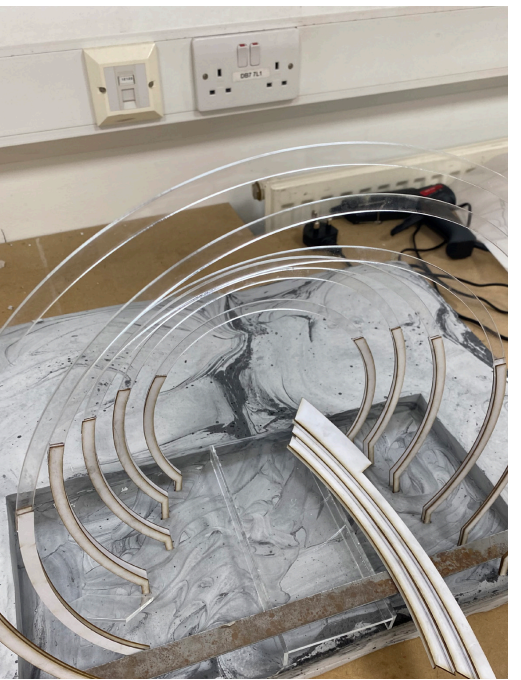
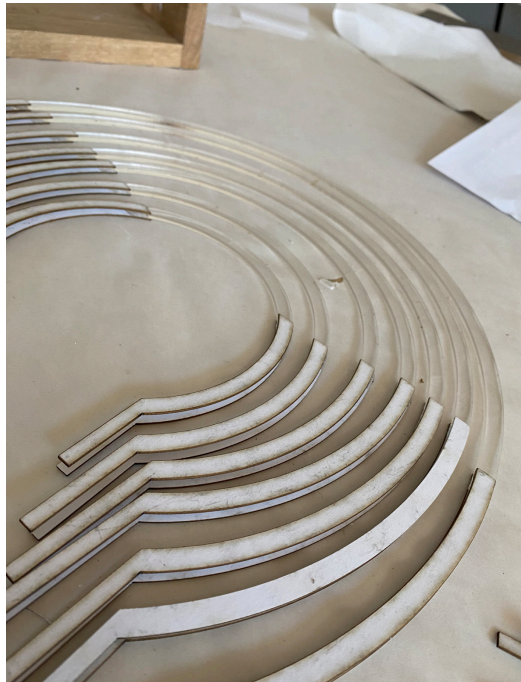
SECTION A-A

LAMP PROTOTYPE

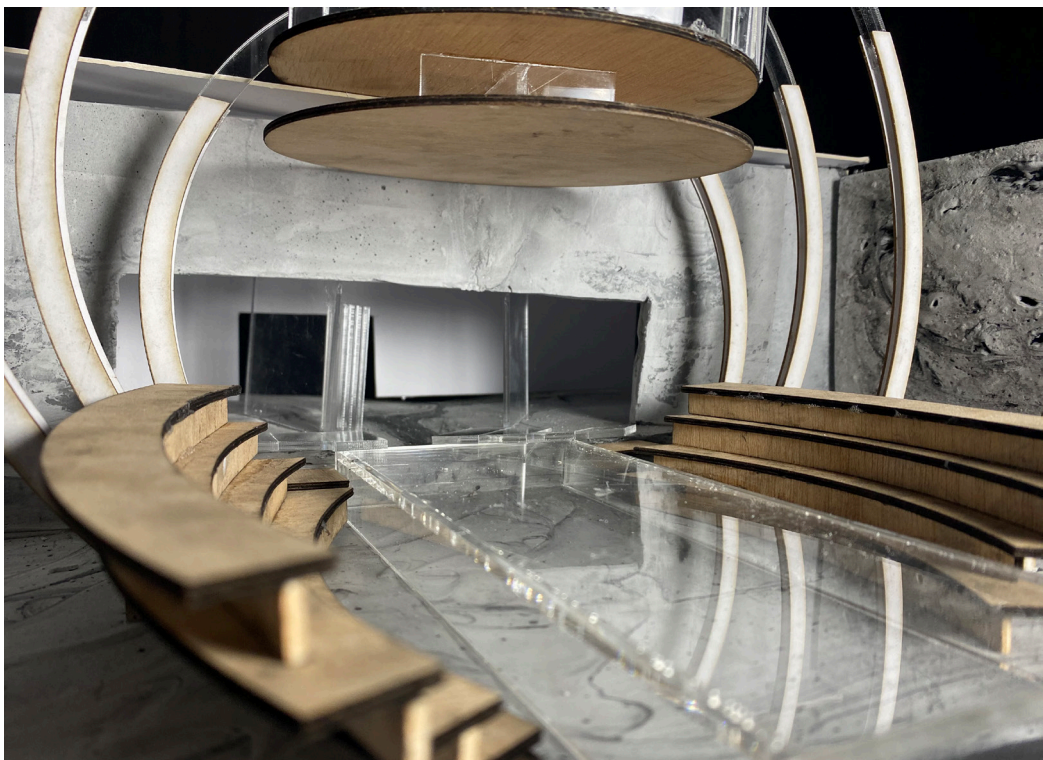


LAMP DESIGN FINAL PROTOTYPE

SECTIONAL MODEL 1:50



PROCESS OF BUILDING



VIEWS OF AUDITORIUM