

# MY OWN PRIVATE U T O P I A

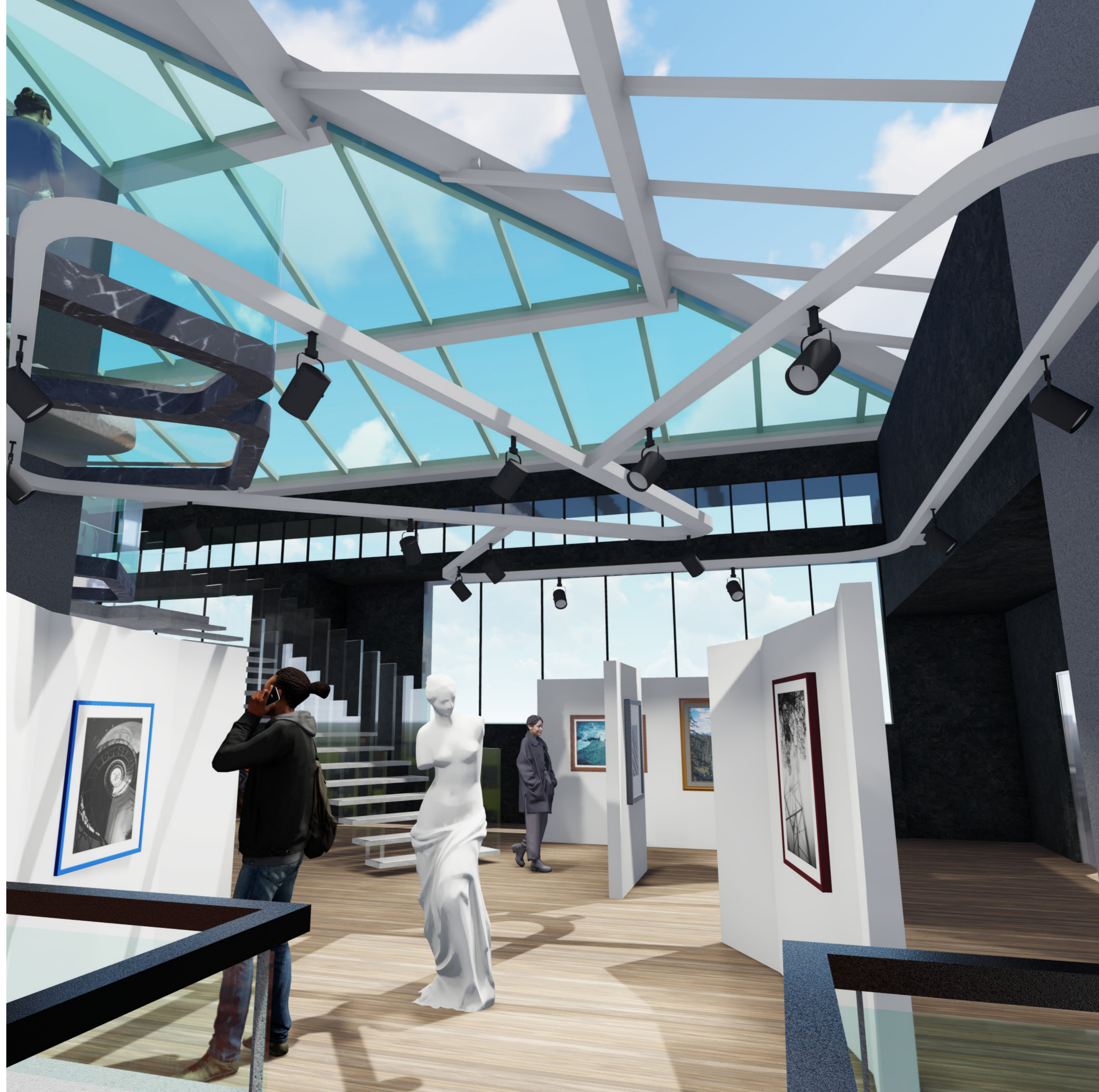
ART EXHIBITION, BAR AND CAFE

In this project we had to redesign a 'Function Area' that sits in the Barbican Garden Terrace. We need to analyse the site and the surroundings, thinking of its character as a destination point and its connection to surrounding spaces. Visibility, Movement, Access, Surfaces, Structure, and Function are some of the characteristics that can define private and public spaces and the boundary between them.

The new space within a space should have a few considerations. It should include a re-design of the terrace bar, and consider how this relates to the new designed space.

For this project I decided to create a social environment that people from different age groups and social backgrounds could enjoy and experience.

SHARON GOMES





SITE IMAGES

SITE ANALYSIS

Barbican Centre

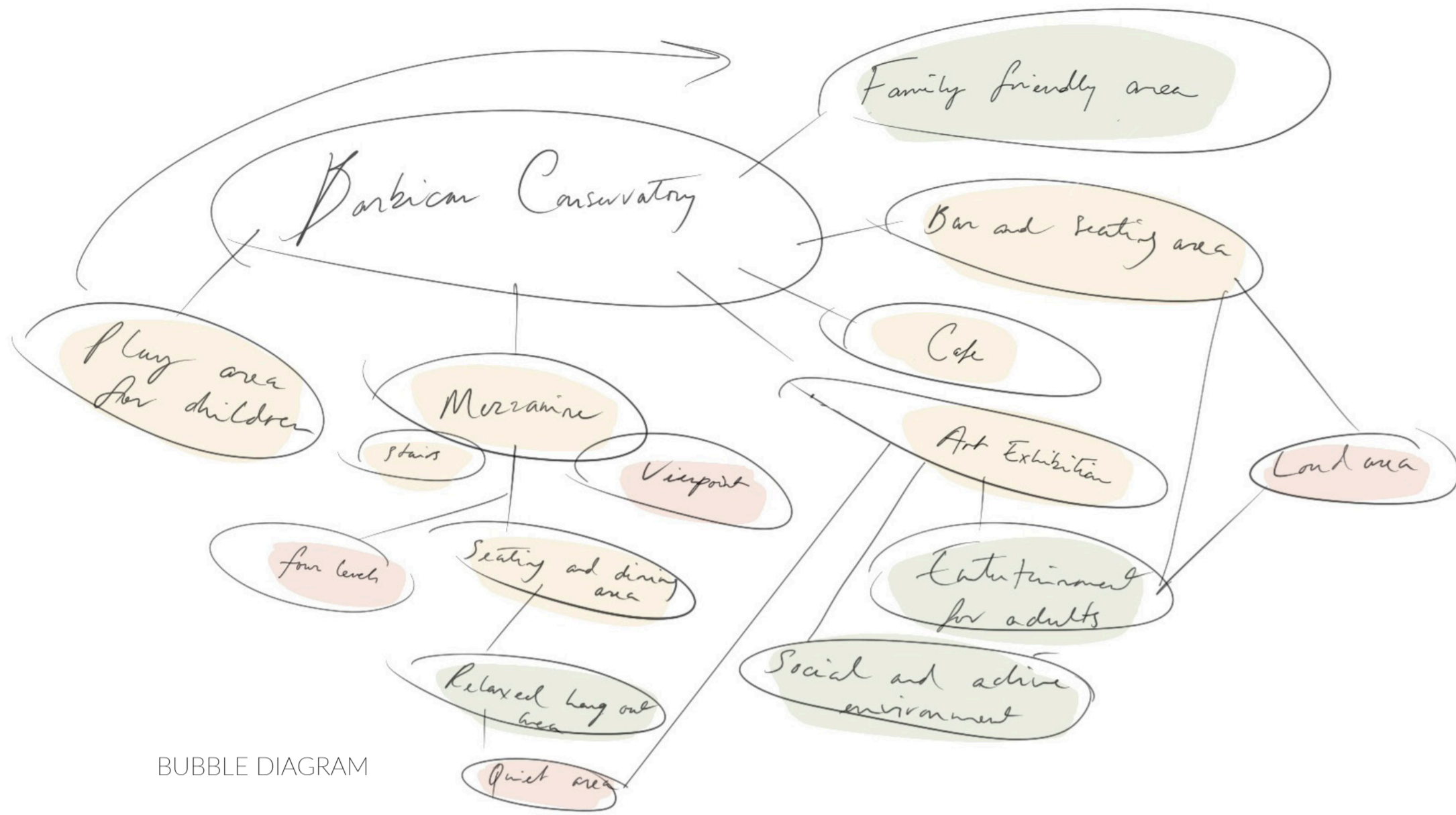


- Water
- Vegetation
- Underground
- National Rail
- Cycling route
- Pedestrian walking route
- Underground train route
- Barbican Kitchen
- Lakeside Terrace
- Entrance and exit

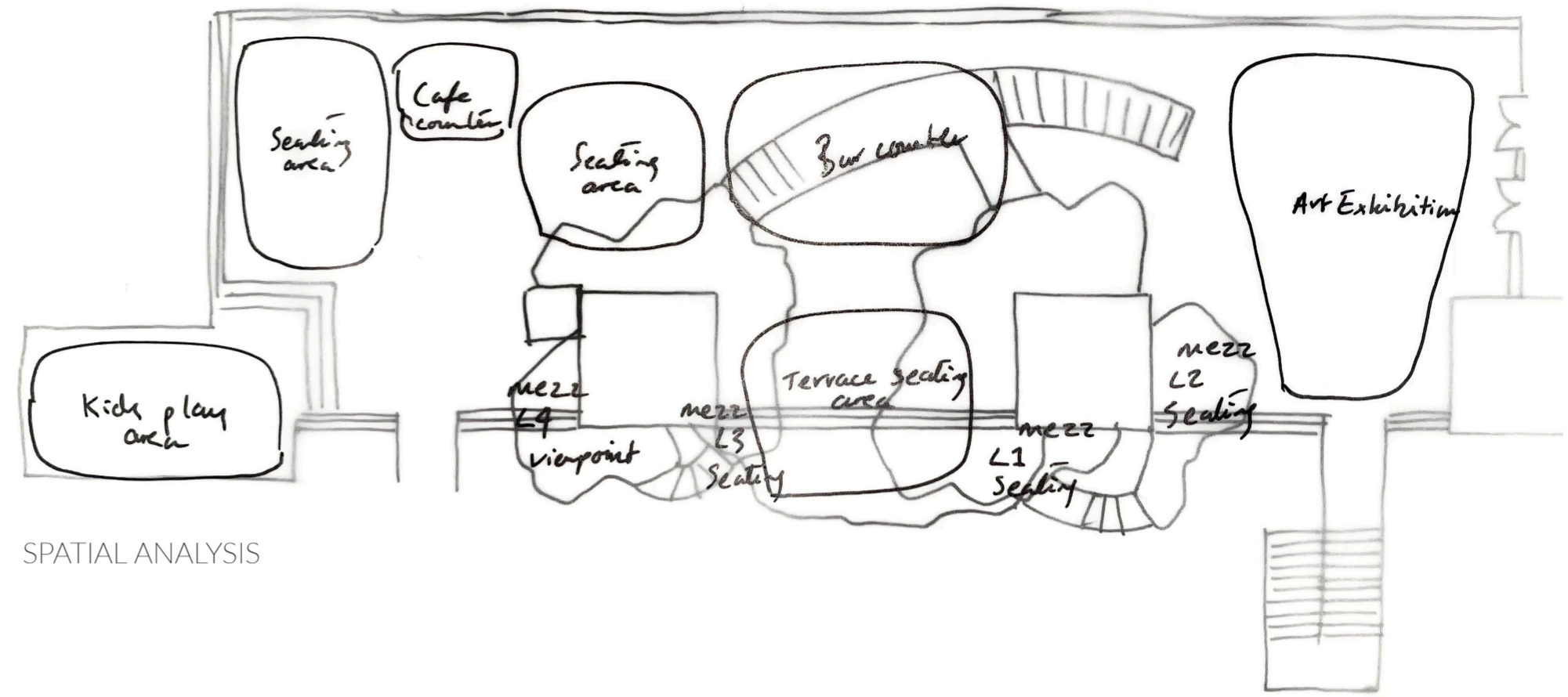
SITE ANALYSIS

MATERIAL PALETTE

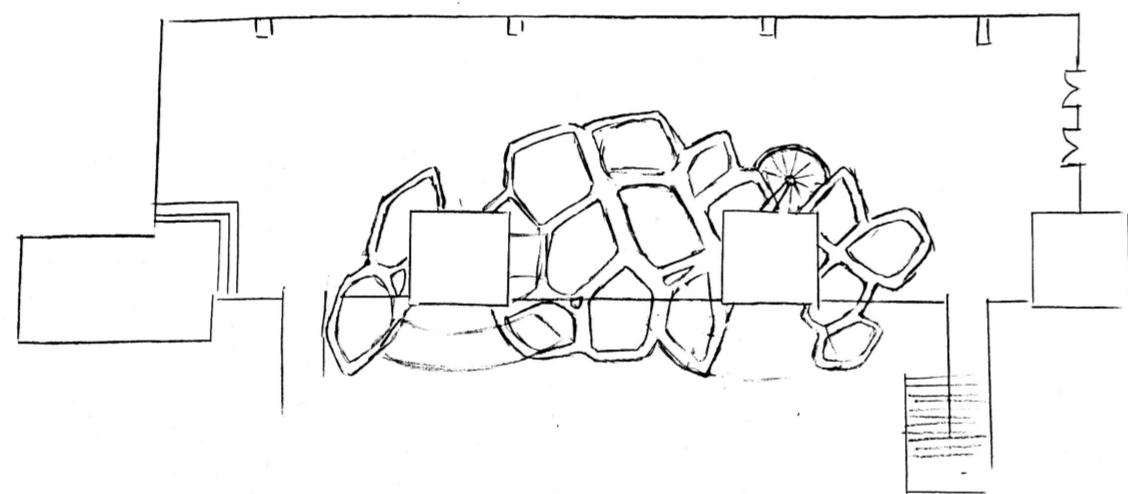
CONCEPTUAL COLLAGE



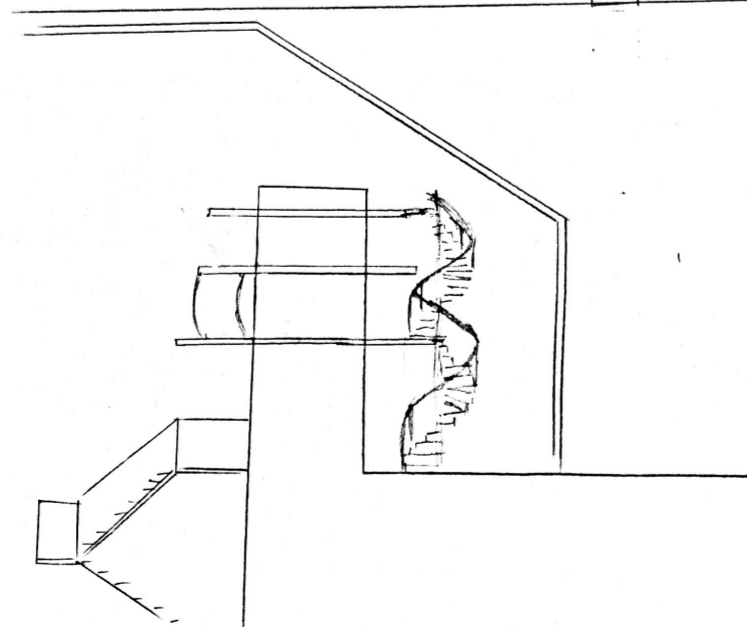
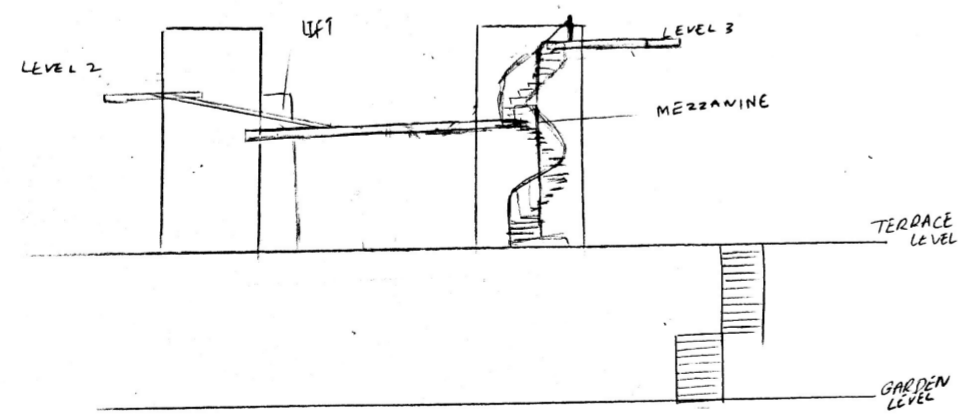
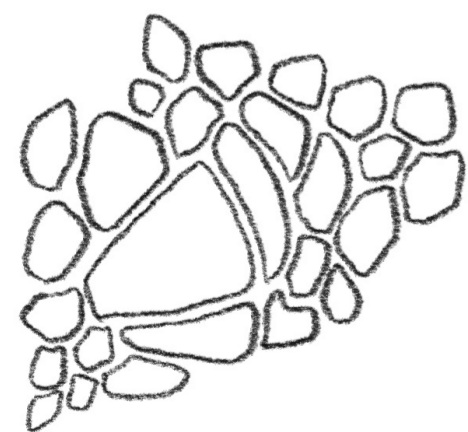
BUBBLE DIAGRAM



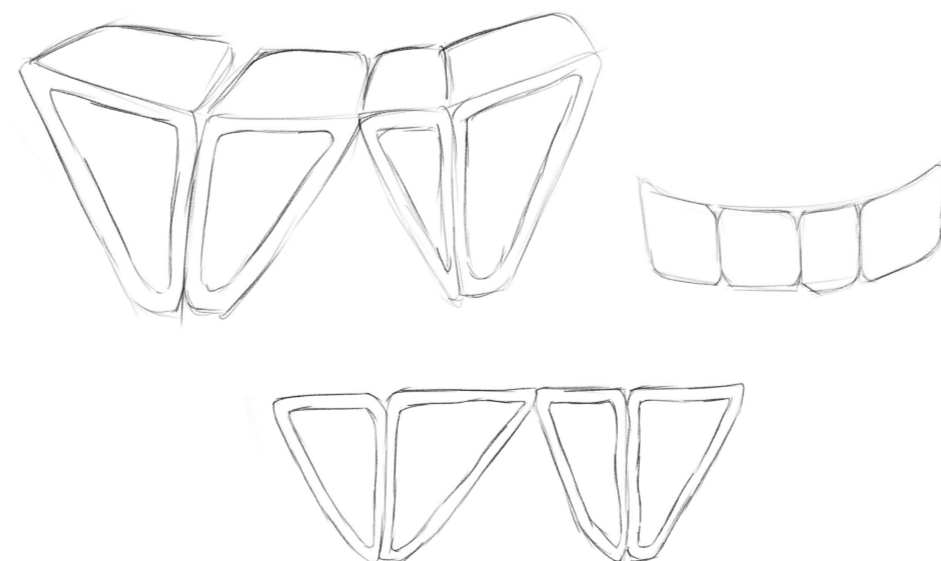
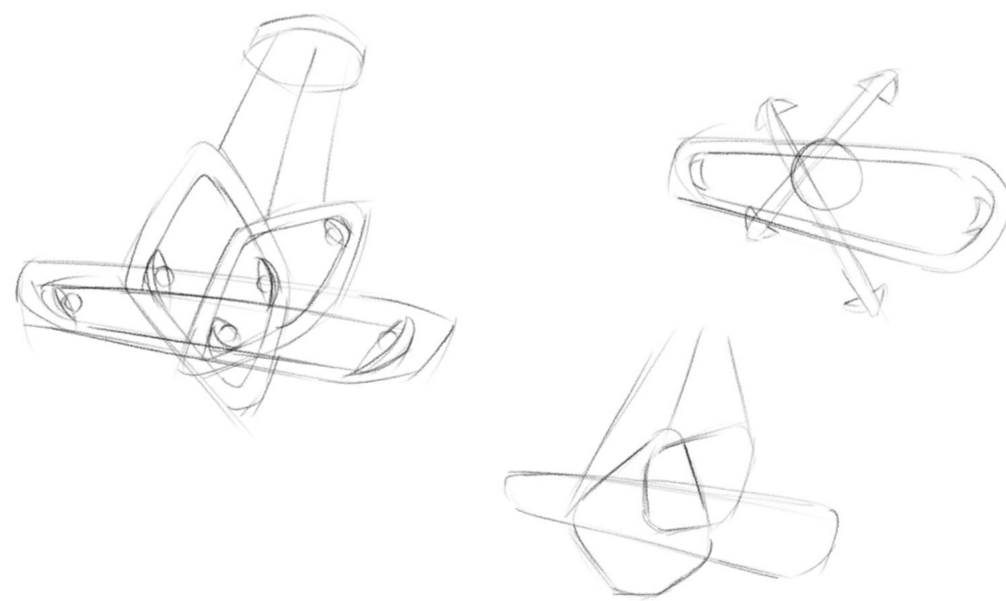
SPATIAL ANALYSIS

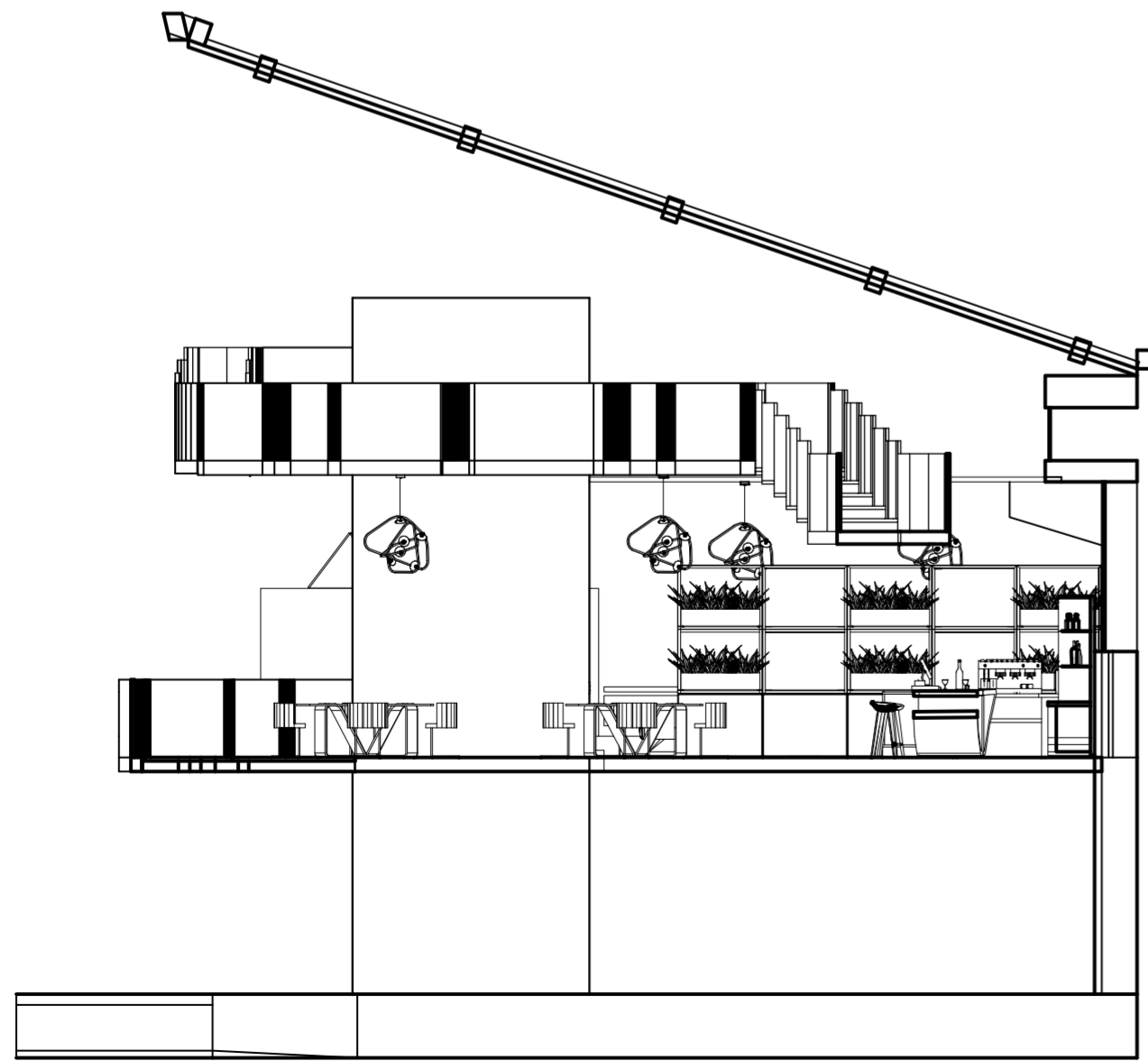
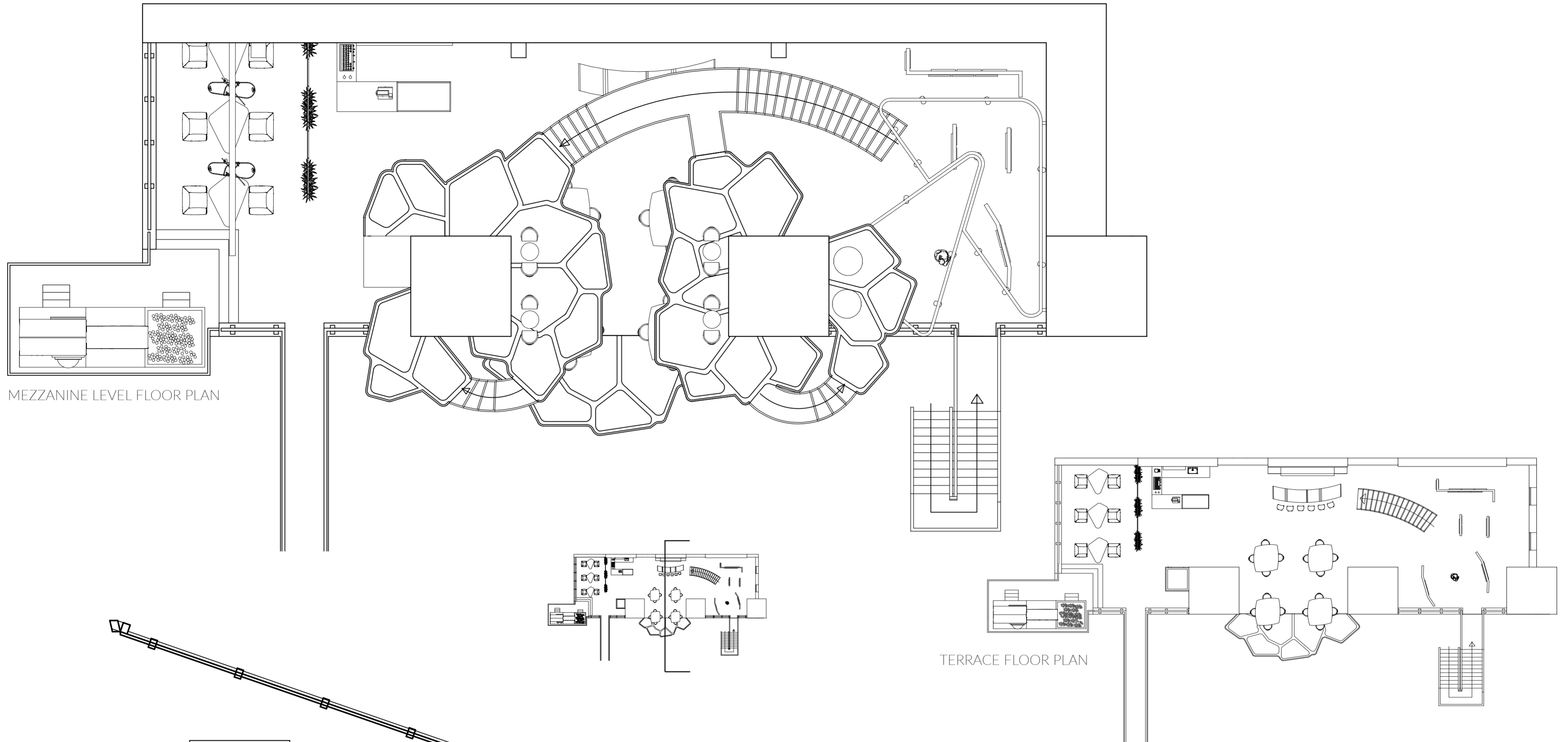


INITIAL SKETCHES

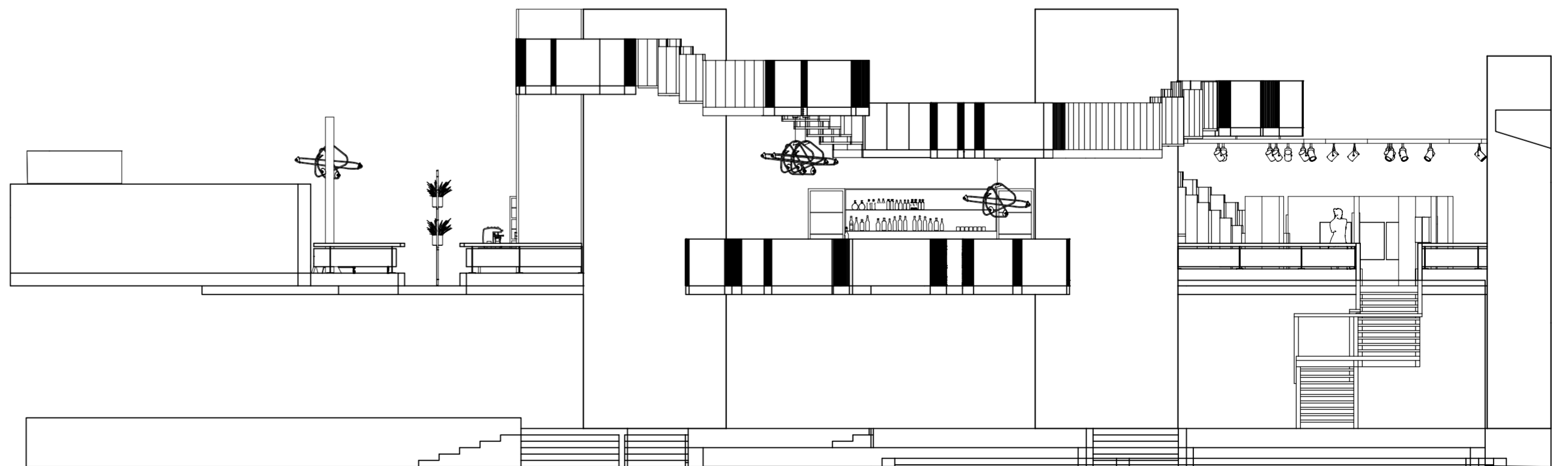


DESIGN DEVELOPMENT





SECTION



FRONT ELEVATION

