

DINNER + A SHOW



Collage of the historic Tramshed pictures

The Client - Tramshed

The Tramshed has been open since 1973 and was originally called the GLYPT Greenwich & Lewisham Young People's Theatre which started life as part of the extraordinary vision of its founder, Ewan Hooper. Now called the Tramshed it is a theatre company and community arts hub based in the heart of Woolwich, South East London. The organisation offers arts programmes for young people and adults with learning difficulties, is home to a number of diverse community groups, as well as facilitating local artist development and career opportunities.

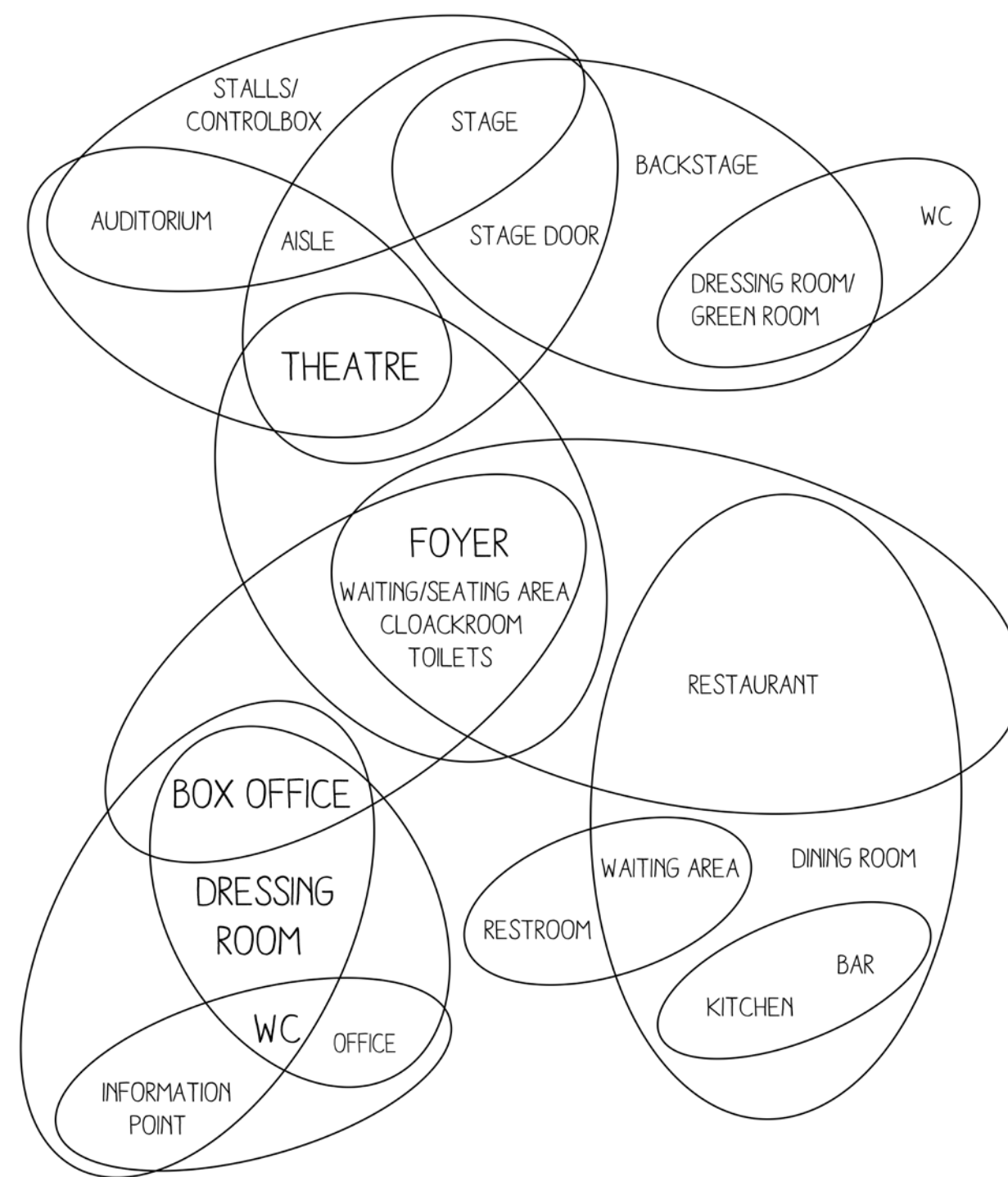
The Tramshed organisation believes in a 'creative experiences that remove barriers,' connecting us and positively enriching our lives and aims to be the force for that change in the Woolwich community – 'inspiring, challenging and entertaining people of all ages and from all backgrounds.' Woolwich is an area which has a high percentage of social deprivation and gang violence. The Tramshed provides a much-needed alternative for the youth of the town and Bernardine Evaristo the first black woman to win the Booker prize was a member of GLYPT as a child.

The Building

The Woolwich Tramshed is a listed building in the heart of Woolwich. The building was originally a generating station to provide power for the local Tram system between 1916 and 1953. It has had many uses since then but has primarily been a place for gathering and entertainment.

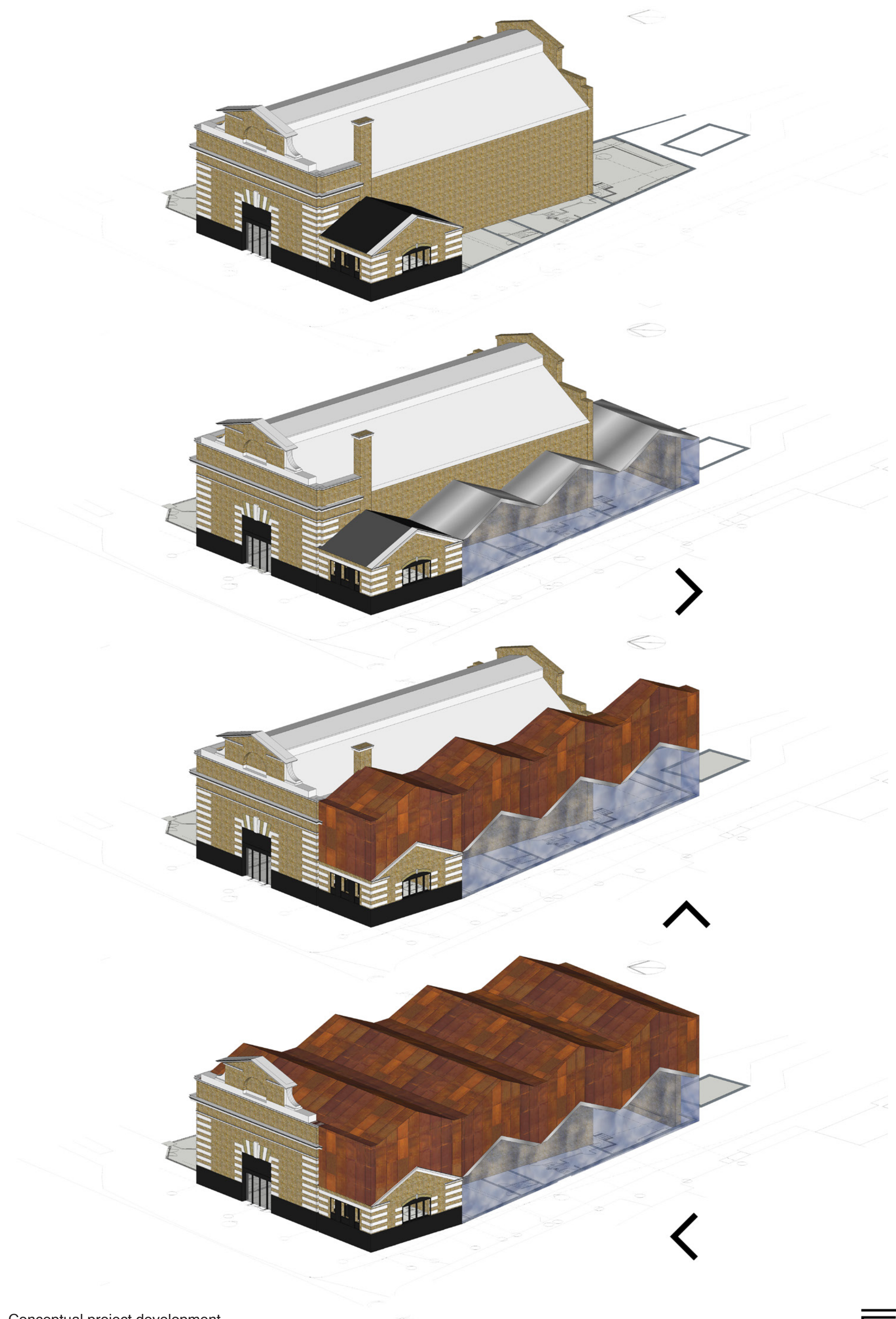
The Brief

Woolwich is an area of London which is undergoing a huge process of gentrification. The Tramshed is a community asset which needs to be celebrated and updated to meet the future needs of the community. Considering the brief and through careful site analysis I could see it was necessary to maintain the structure that has now become a symbol of Woolwich. Flanked on the west side by houses and restaurants and on the north façade faces General Gordon Square. The planning and design were strongly influenced by the shapes, and architectural landscape of the area while considering sustainability. When developing the design concept, I wanted to retain as much of the existing building language but also to develop a new design language using materials which celebrated Woolwich's industrial past. I have use the Corten steel to create a new roof as a reminder of Woolwich manufacturing history in the production of armaments.



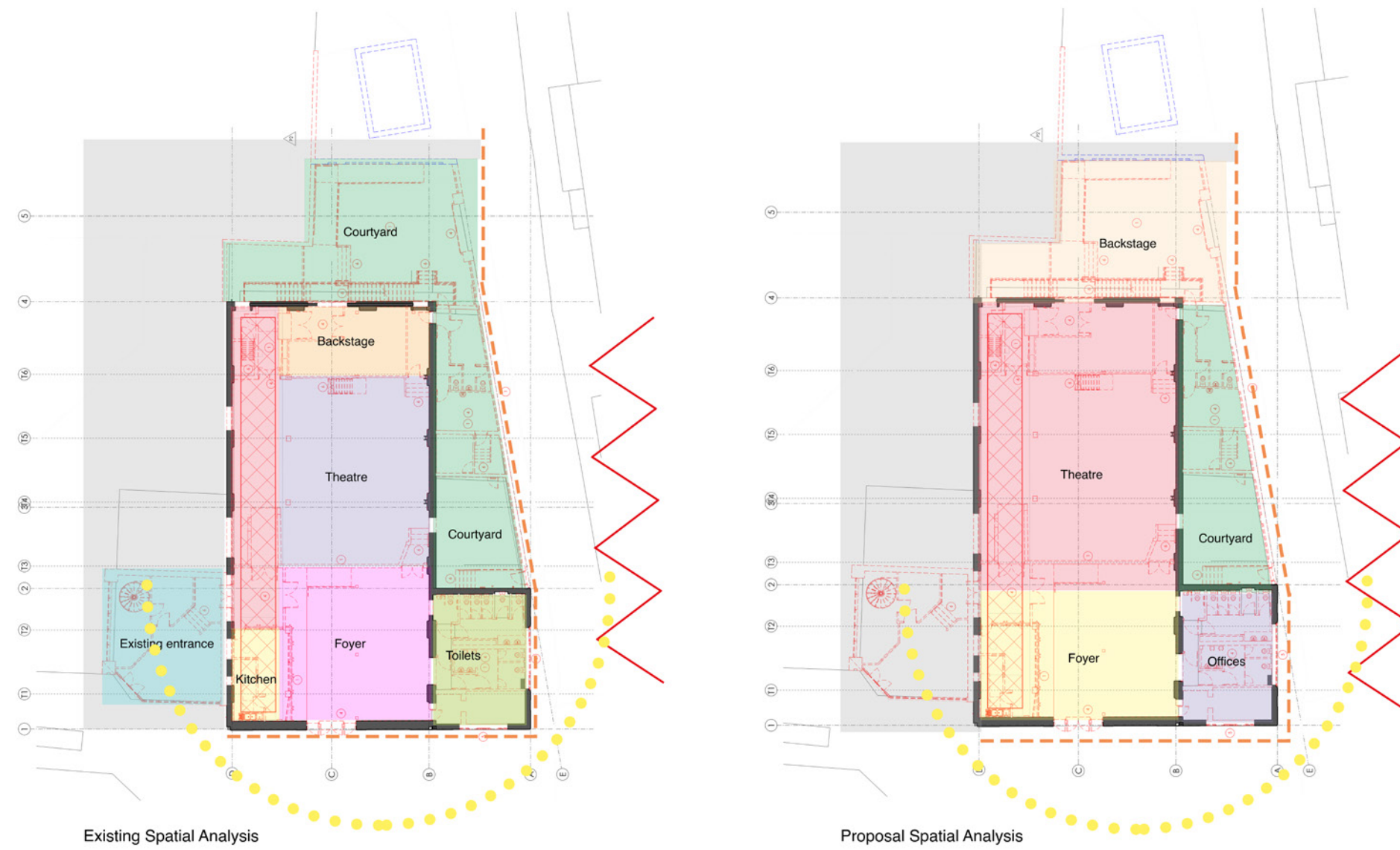
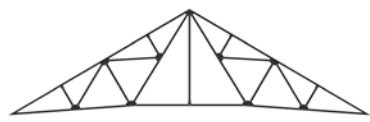
BUBBLE DIAGRAM

Specimen room schedule bubble diagram



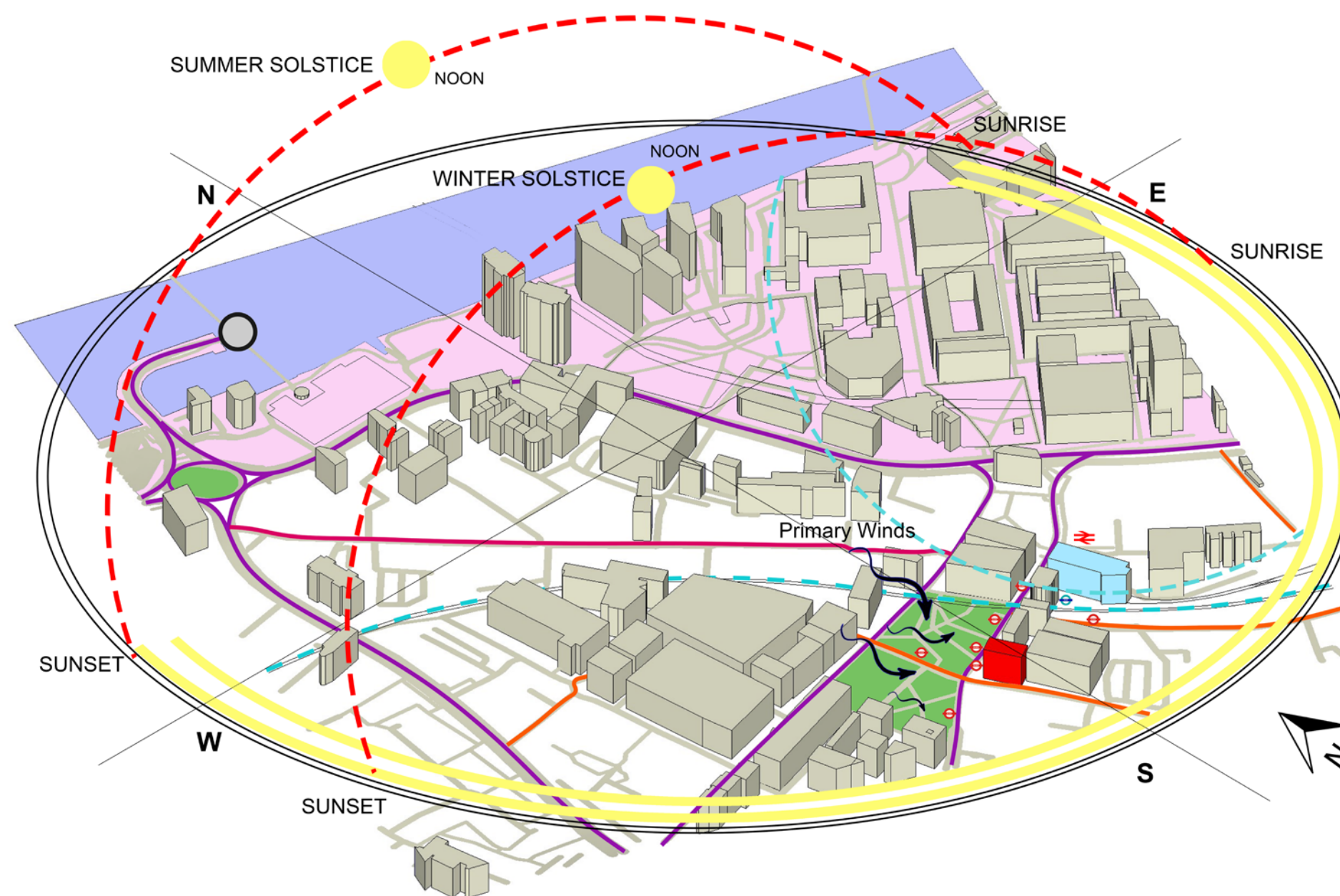
Conceptual project development



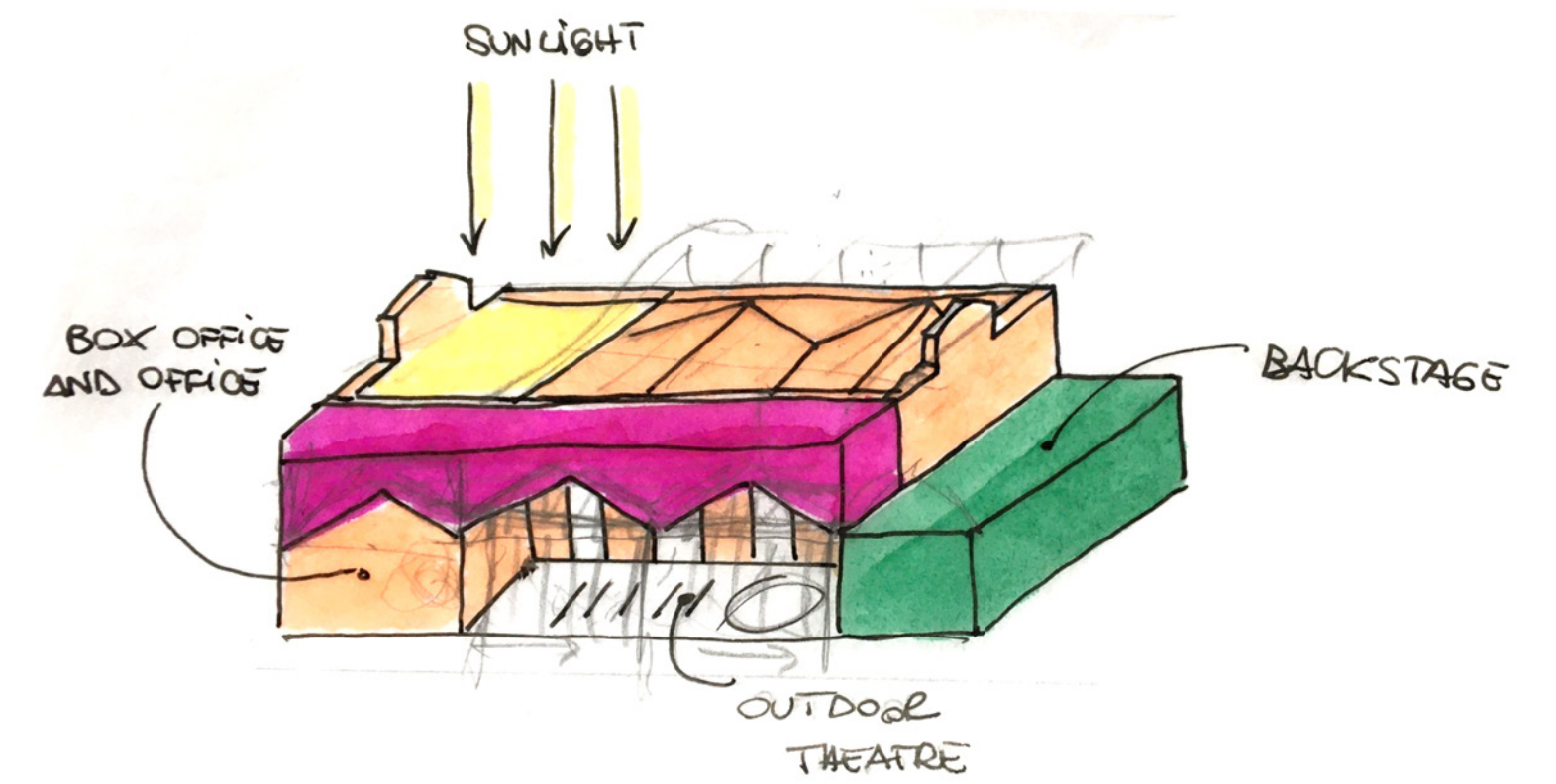


Material

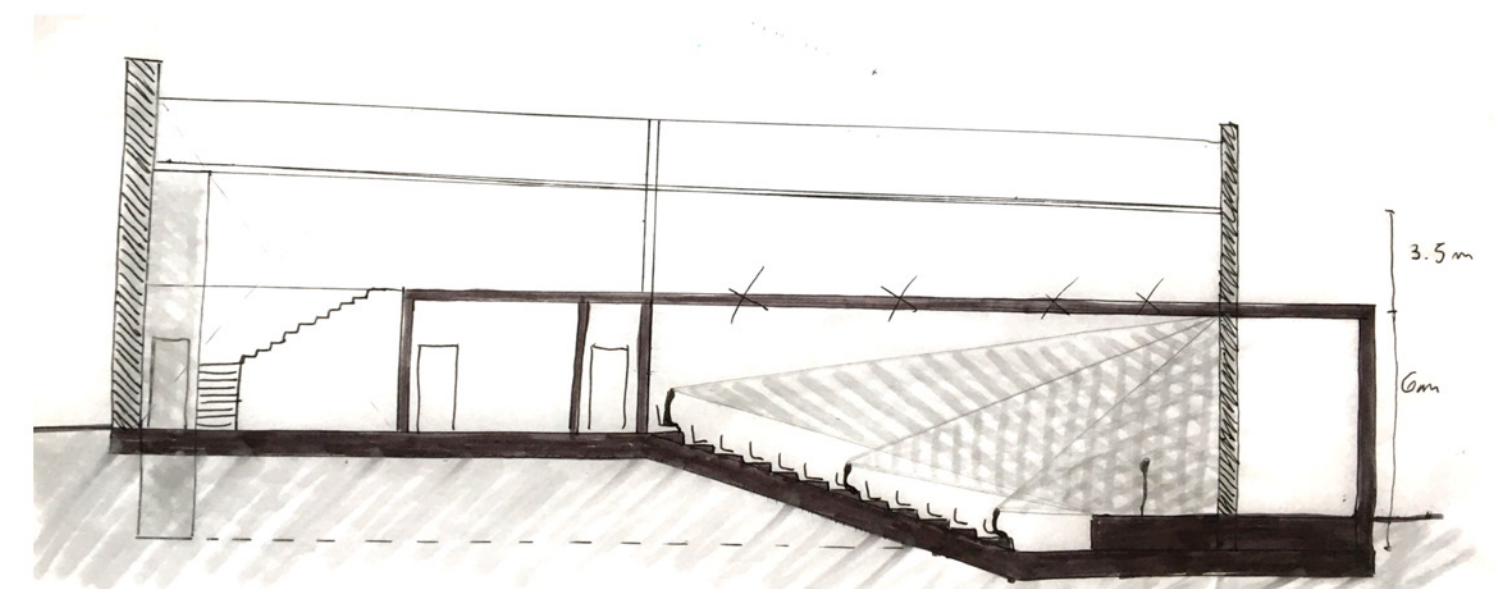
- Major Roads
- Minor Roads
- High Street
- DLR
- New Residential Area
- Garden Square
- Site
- Winds
- Ferry
- Bus Stop
- National Rail



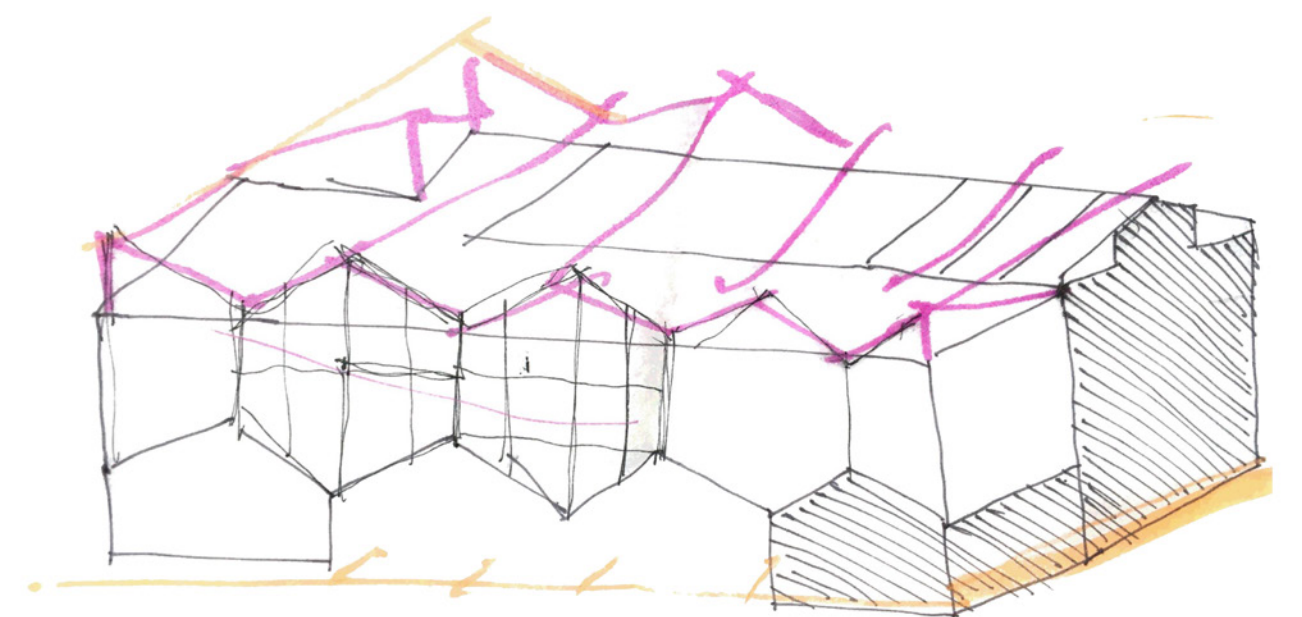
Site analysis diagram



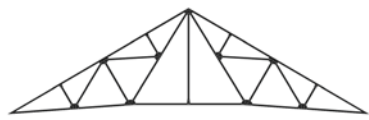
Sketch N.1



Sketch N.2

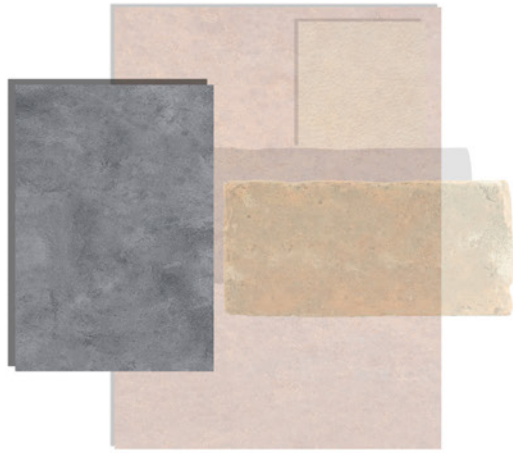


Sketch N.3



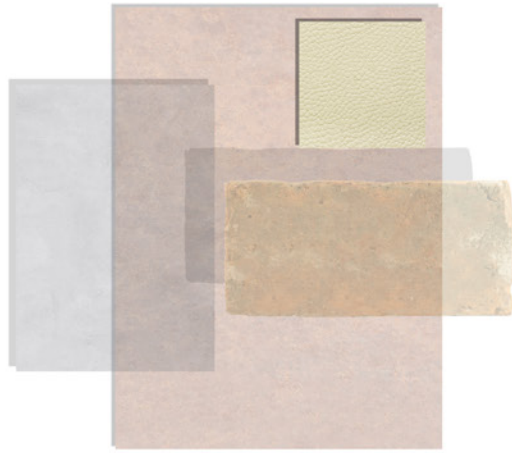
Polished Concrete

- Durable
- Not slippery
- Low cost



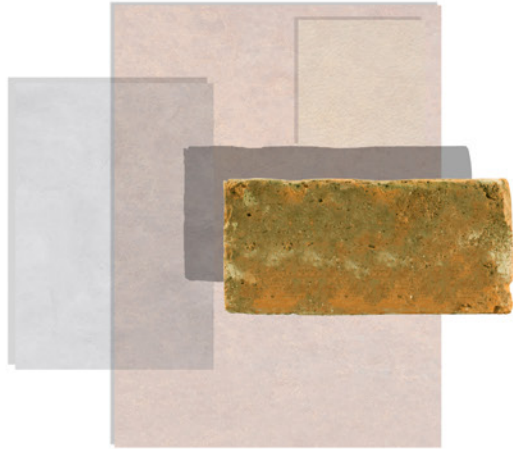
Leather

- Aesthetically classy and modern appearance
- Durable
- Easy to clean
- Hypoallergenic
- Natural substance



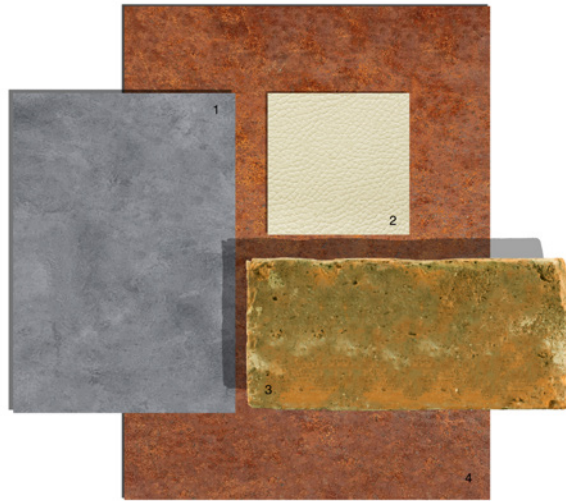
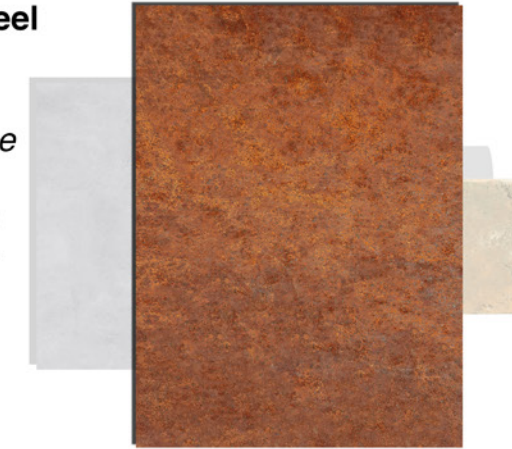
Brick

- Energy efficient
- Low maintenance
- Weatherproof
- Creative and colorful
- Sustainable

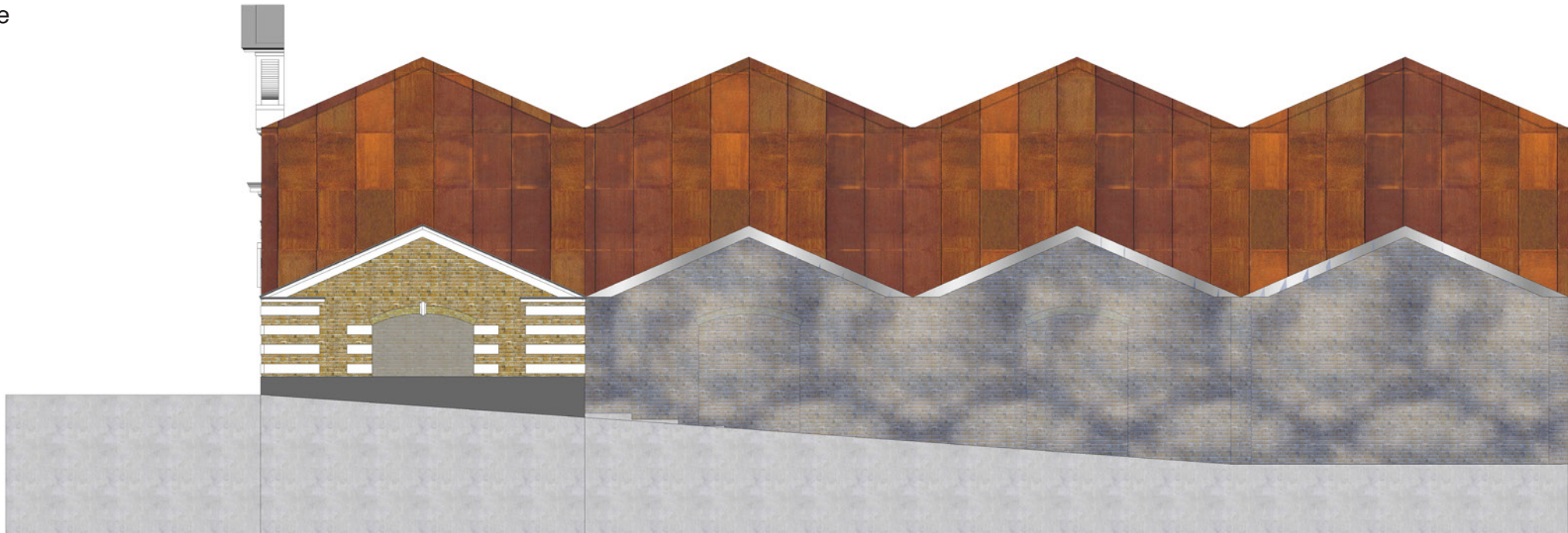


Weathering Corten Steel

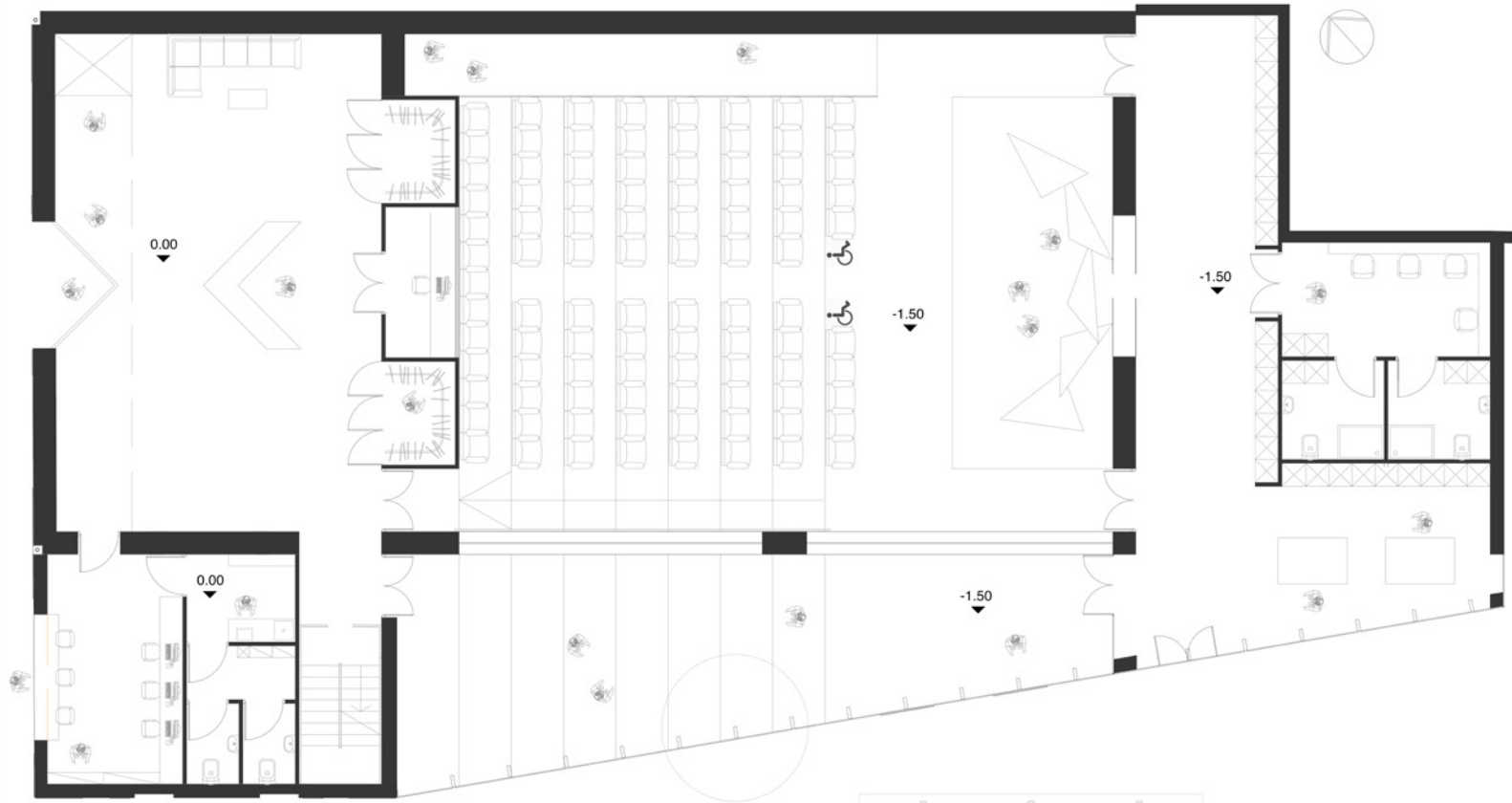
- Anticorrosive
- Low paint maintenance
- Strong and durable
- Attractive appearance
- Heat resistant without increase corrosion



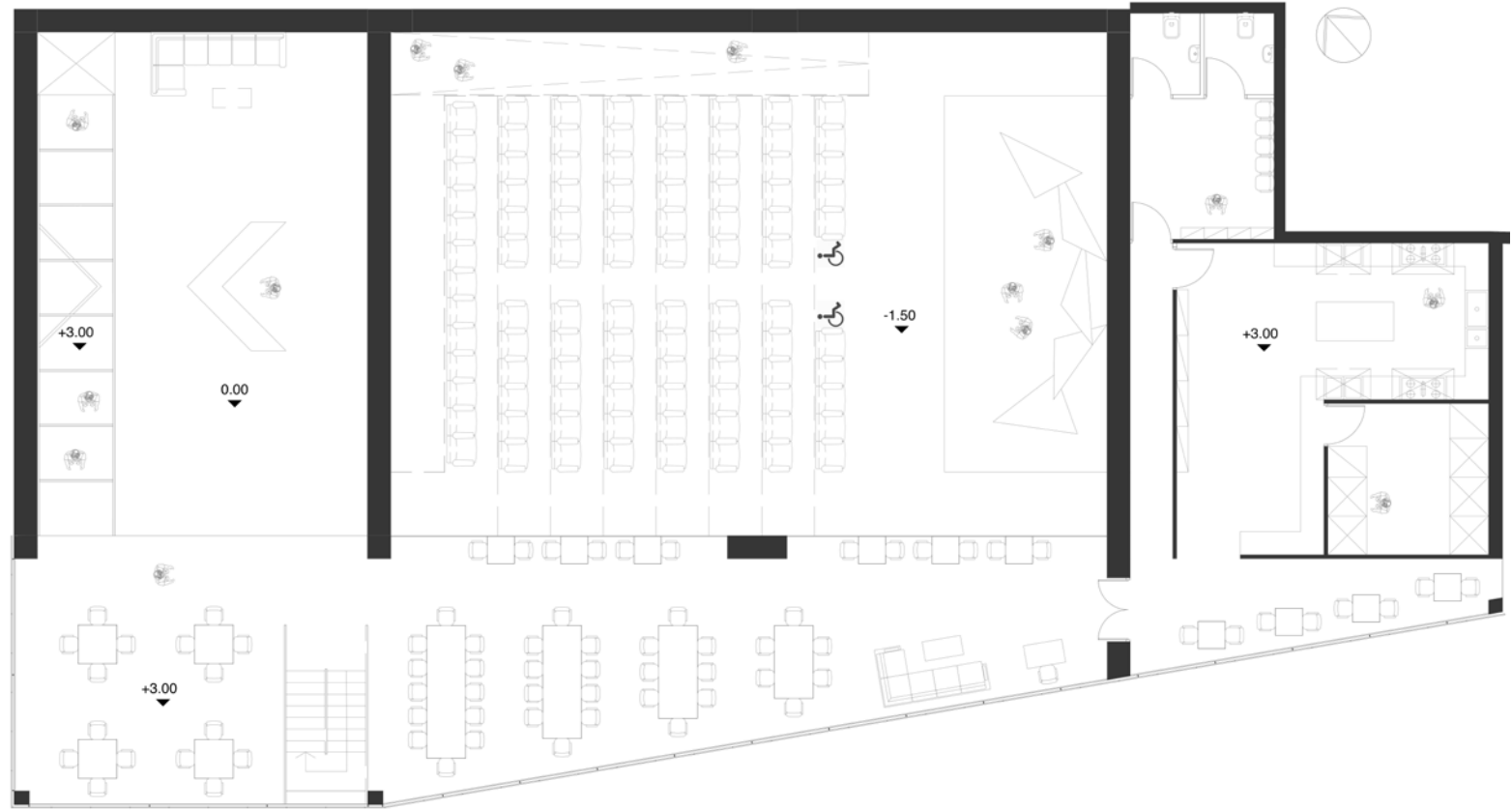
Material palette



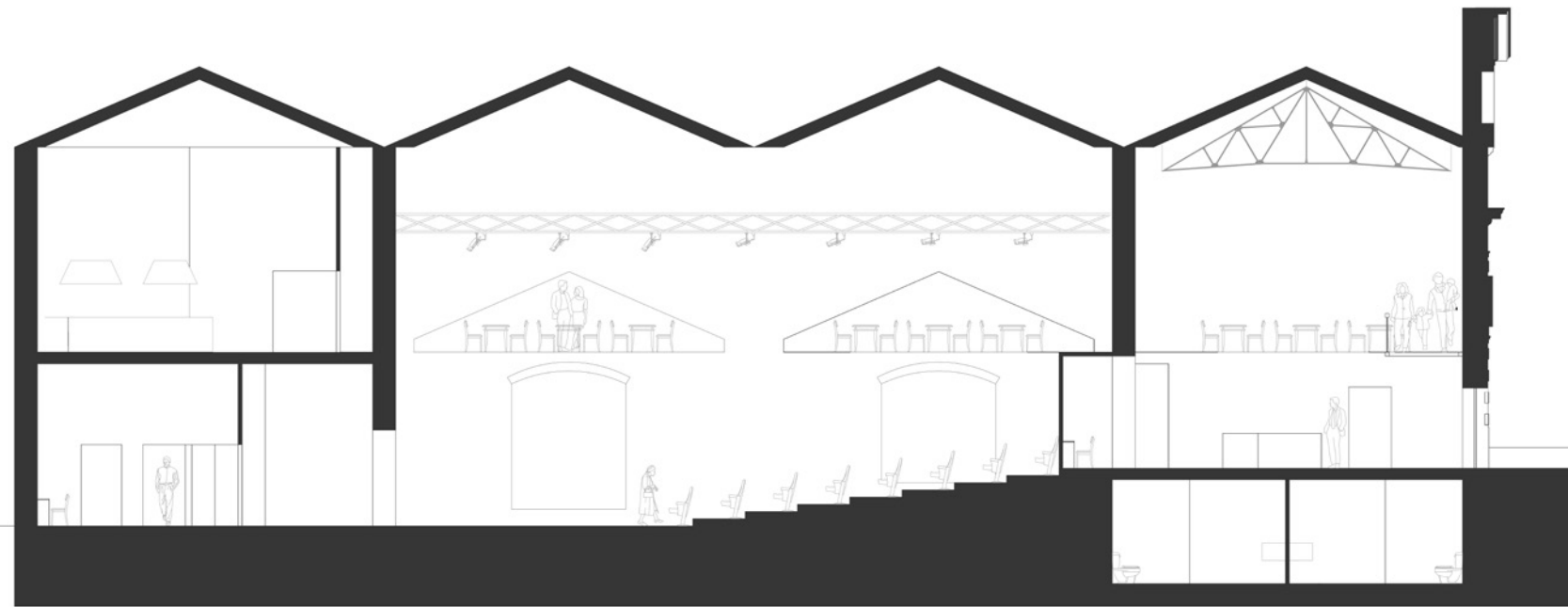
Long elevation



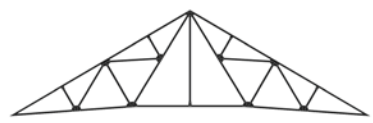
Proposal ground floor



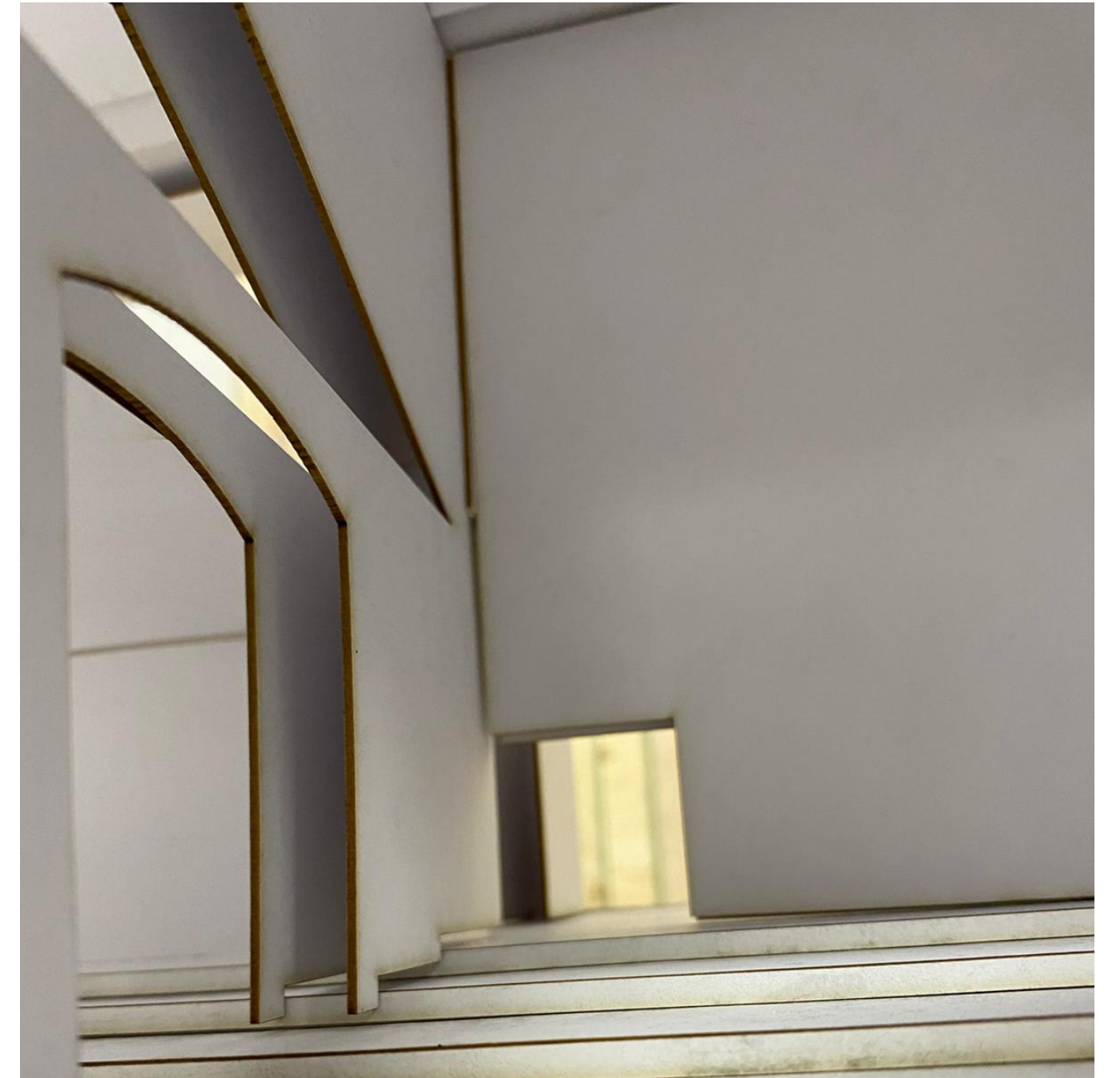
Proposal first floor



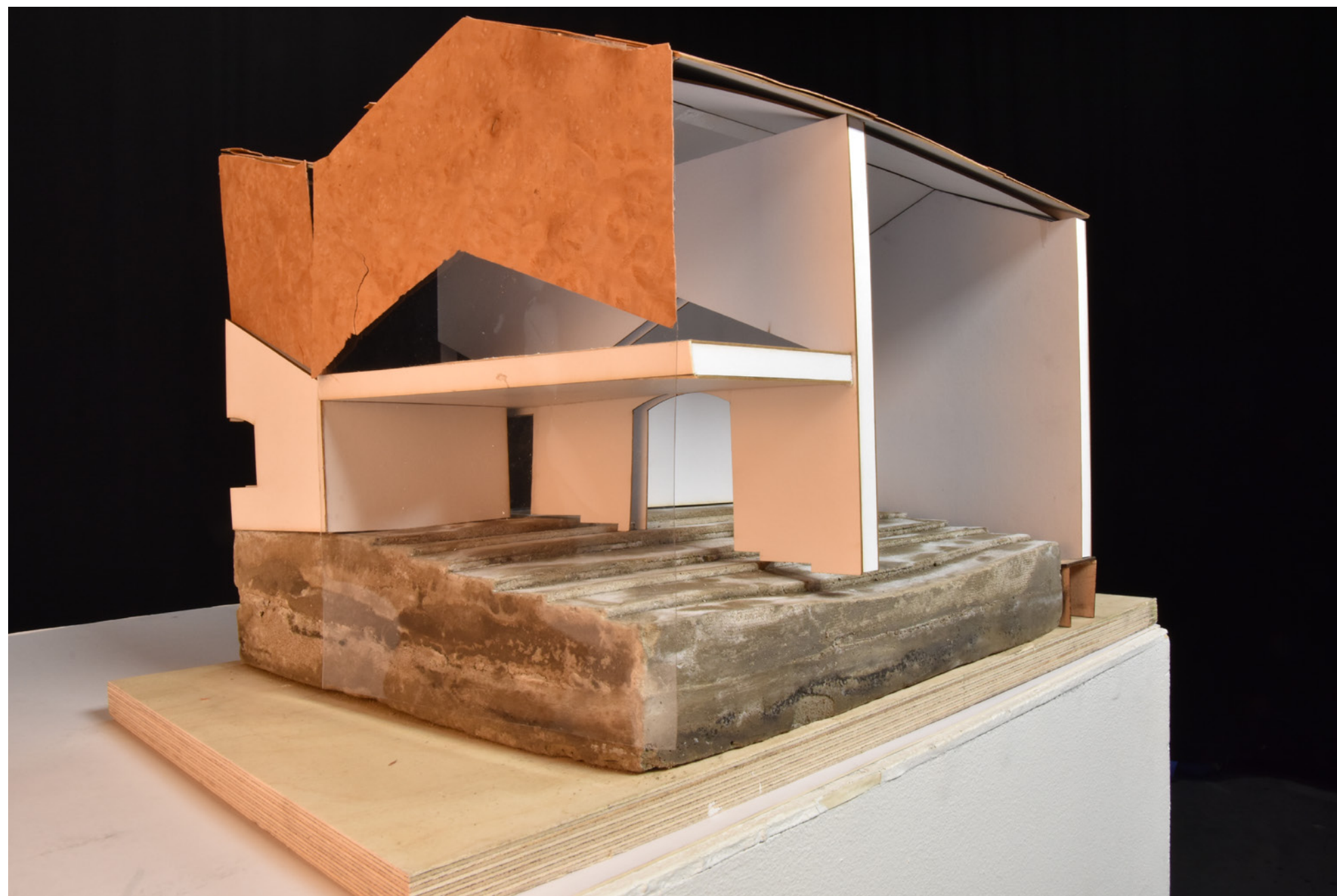
Proposal long section



Model making prototype courtyard visual



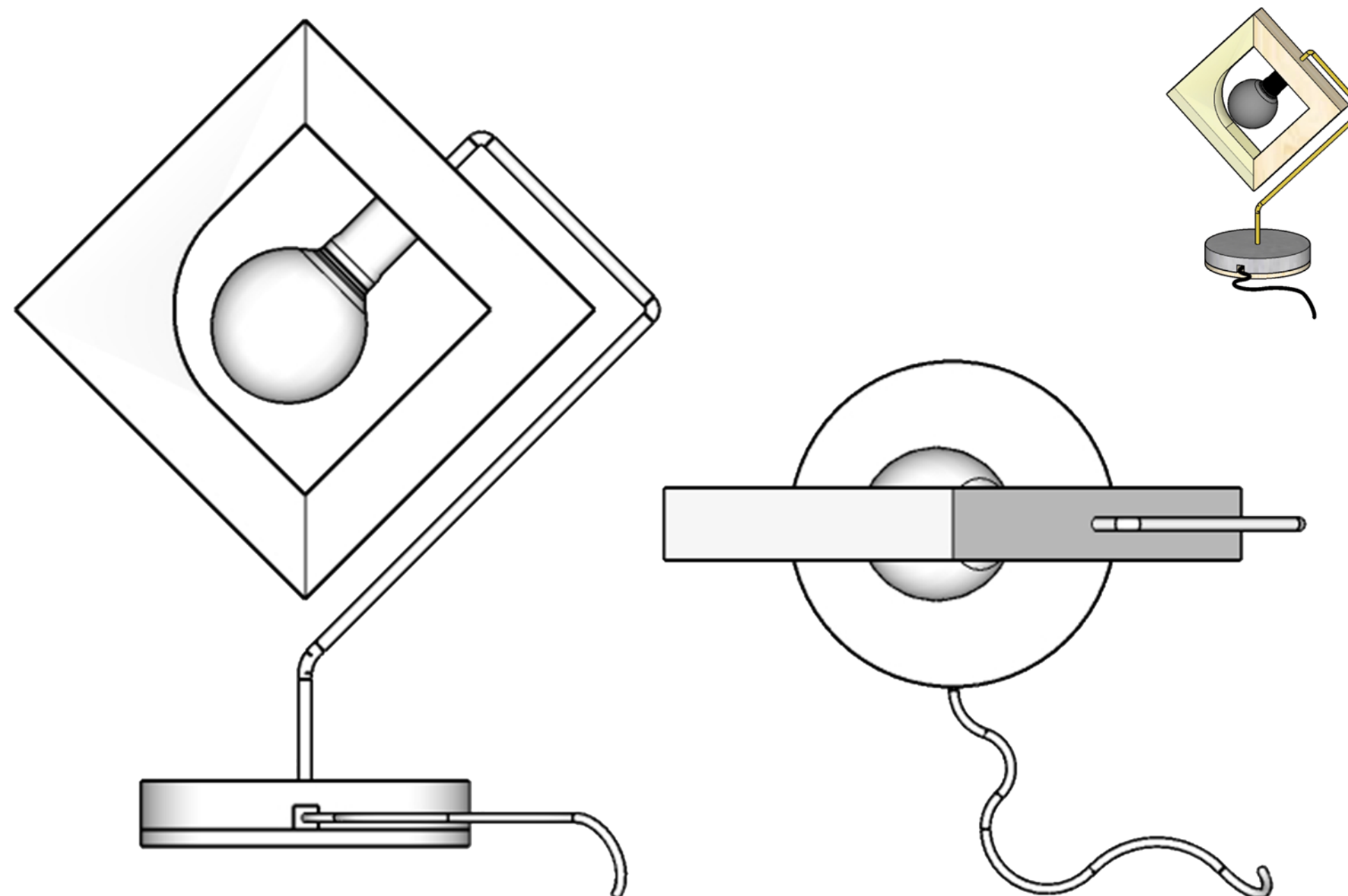
Model making prototype theatre visual



Model making prototype



Render proprsals



BA Interior Design, University of East London

University: University of East London
Course: BA (hons) Interior Design
Tutors: Keith Winter, Pol Gallowager, Nayden Hadzhiev, Malika Haque, Claudia Palma, Sabina Andron and Sue Ginsburgh

Course statement:

"Focusing on personal, materiality and making, the BA (hons) Interior Design programme, at the University of East London, led by Keith Winter, allows students' identity to be expressed through playful process and detailed fabrication.

"Take me to the Nail Bar. Nail Bar was a design brief that tasked year two students to reimagine an East London nail salon, using the design and making of a full-sized lamp prototype to inform their proposals. The lamp could be anything from floor-standing to wall-mounted, desk-sitting or ceiling-hung.

"This challenged students to produce innovative lighting designs while also connecting shape and form to the possibilities offered by different materials. From resin and concrete casting to copper-pipe bending, metal welding, woodwork and the integration of electrical parts – the different processes involved lent themselves to an exploration of lifestyle, personality, materiality and colour in interior design.

"We set up a photograph in one of the university's photography studios to capture the results. The students embraced the project with vigour over the second term in 2020, just before Covid-19 altered the curriculum and halted physical interactions on campus. The creation of their much-loved lighting designs gave students momentum and motivation to leap into the design brief during online teaching sessions."

"We were hoping to showcase these luminary creations in our end of year degree show, but unfortunately circumstances have prevented the physical exhibition for now. Instead, we are hoping the public can enjoy the selection of images of these wonderful works and see the imagination and creativity that can be found in UEL's interior design programme."

Lamp design sketches in different shapes and measures proposal