

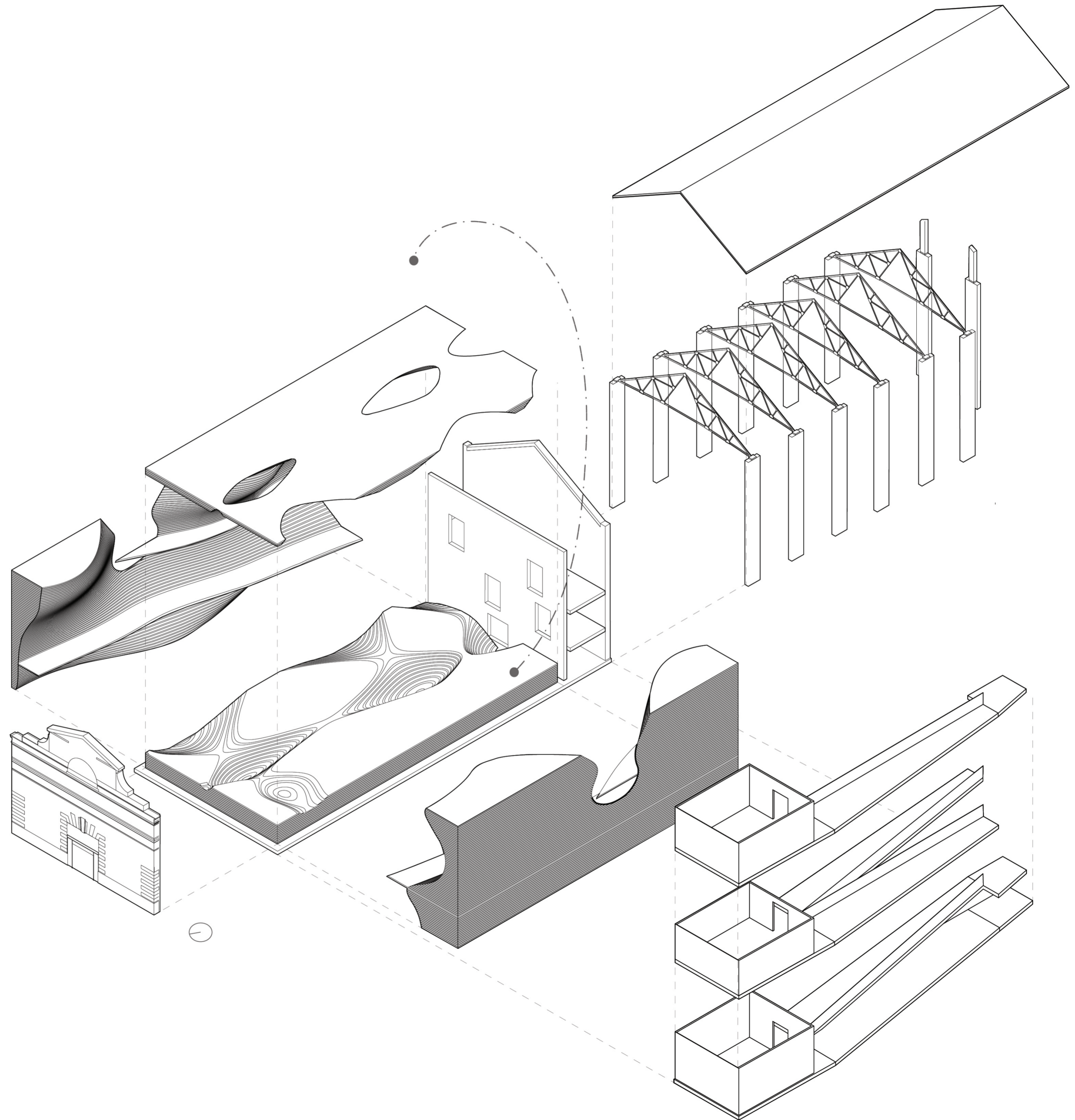
DINNER + A SHOW

MELISSA MUSTAFA

Dinner and a show challenged me to create a community theatre space, restaurant with a box office and re-establish the original entrance to the Tramshed situated in Woolwich, South East London. The Tramshed in Woolwich is a century-old stock brick building that transitioned from an electricity sub-station to a young people's theatre and comedy club in the last fifty years.

This area of Woolwich is currently being gentrified, the demolition of buildings allows for developers to create new build apartment blocks attracting privileged individuals. In this project, I have tried to challenge this by deciding to honour the historical aspect of the Tramshed. I wanted to bring a sense of mystery and self-reflection in the interior. One where the users can get a glimpse of beauty to what I believe is a place that served the infrastructure of Woolwich in connection to all parts. By allowing the building to express exactly what it is and allowing people in the community to access the space for multiple uses, I believe my proposal will bring a sense of community to a rapidly-changing area.

My aim is to push the limits of the existing volume to become an experiential performance space that provides both performer and audience members with many viewpoints and vistas. The bridges, balconies and boxes that look onto the stage are interlocking between layered sheets of recycled paper-crete that uses the waste of the daily London newspapers mulched into cement as an aggregate.

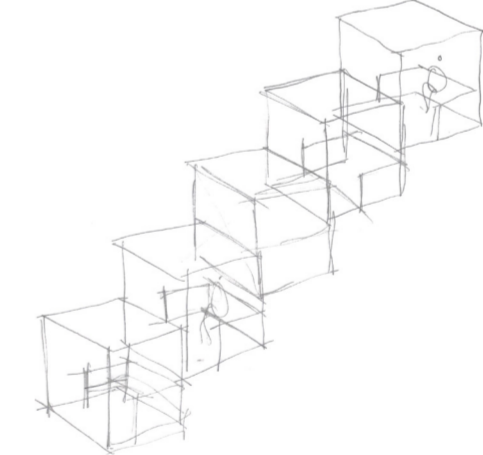
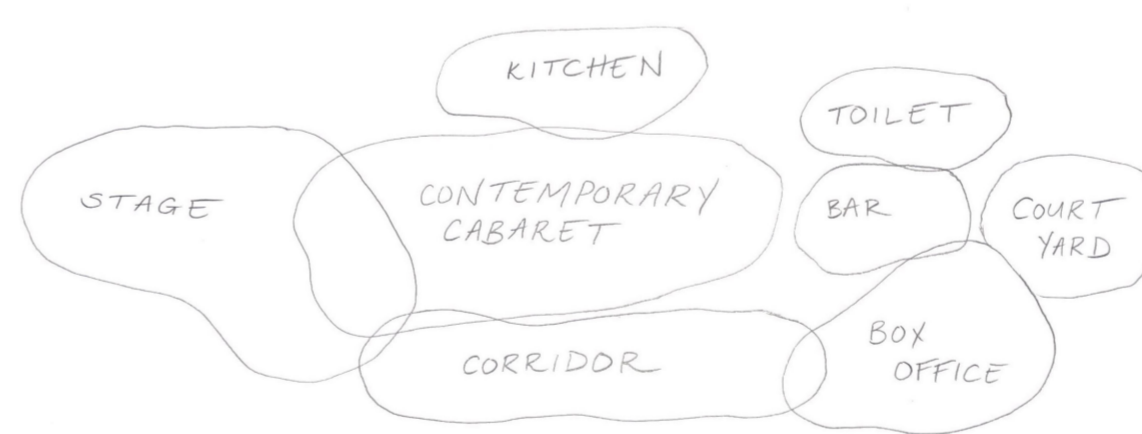
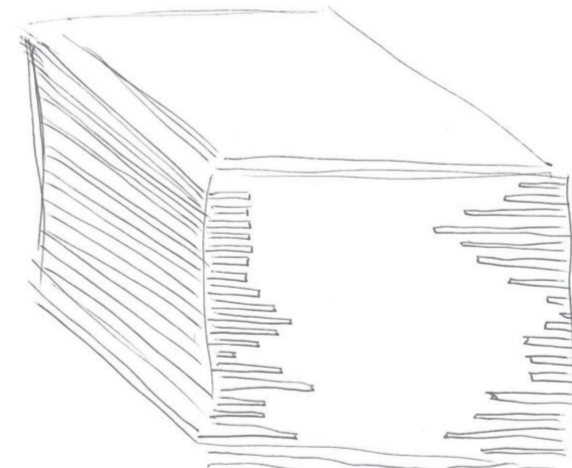
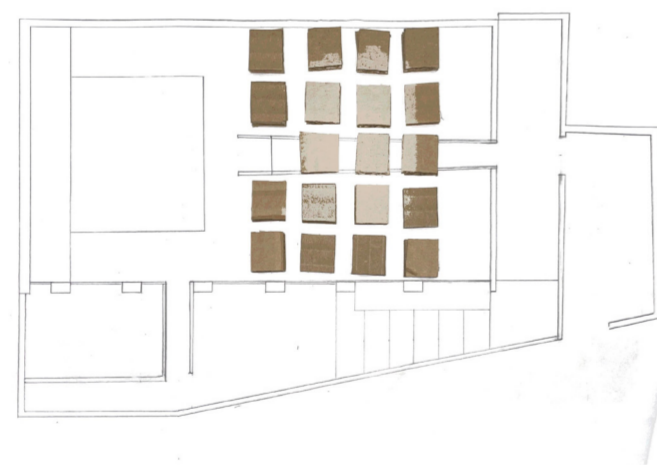




MATERIAL PALETTE



CONCEPTUAL COLLAGE



DESIGN DEVELOPMENT



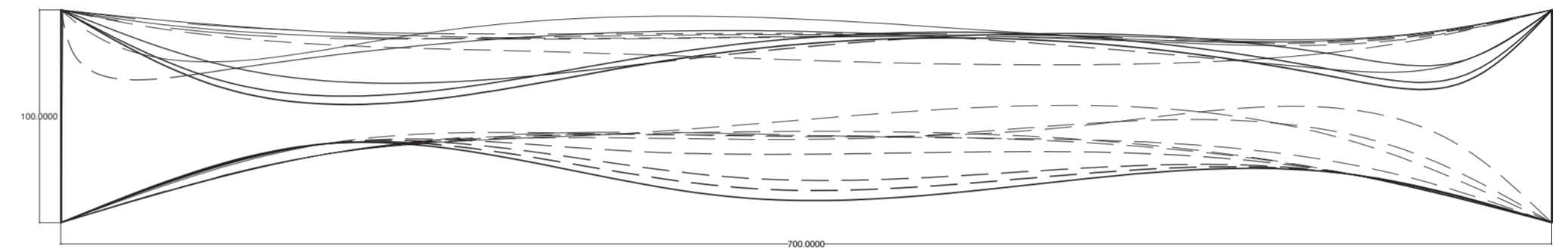
SITE ANALYSIS



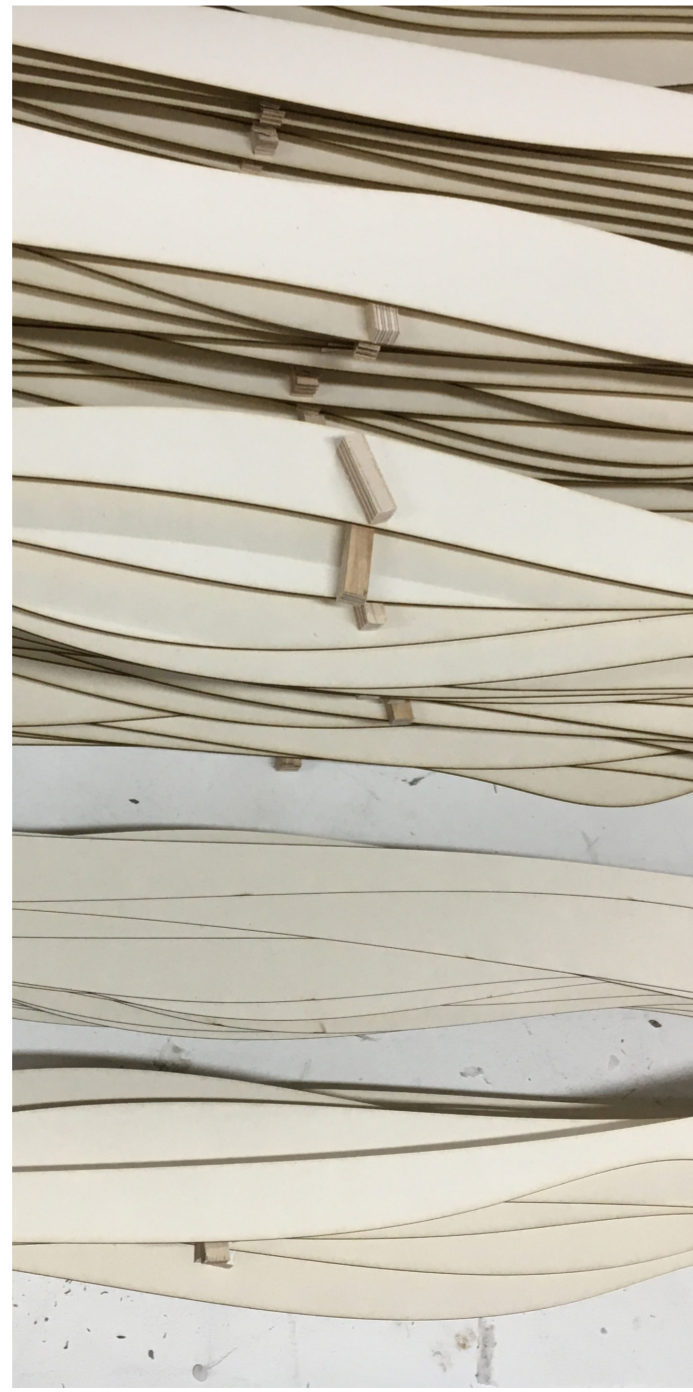
CLOSE UP OF TRAMSHED EXTERIOR



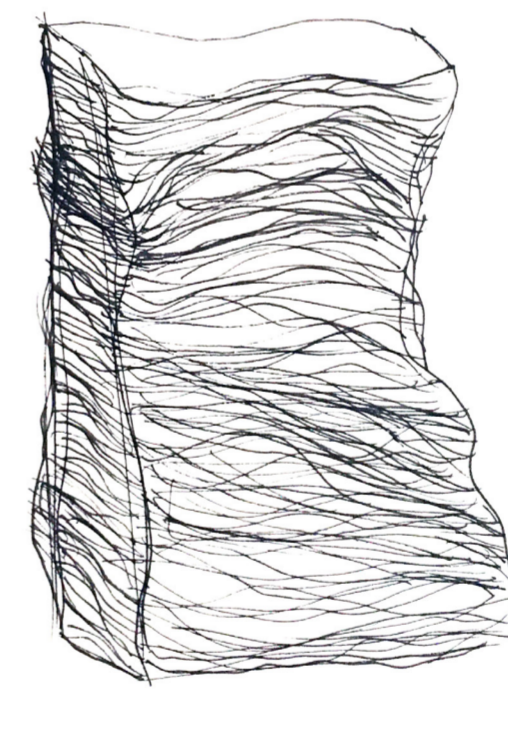
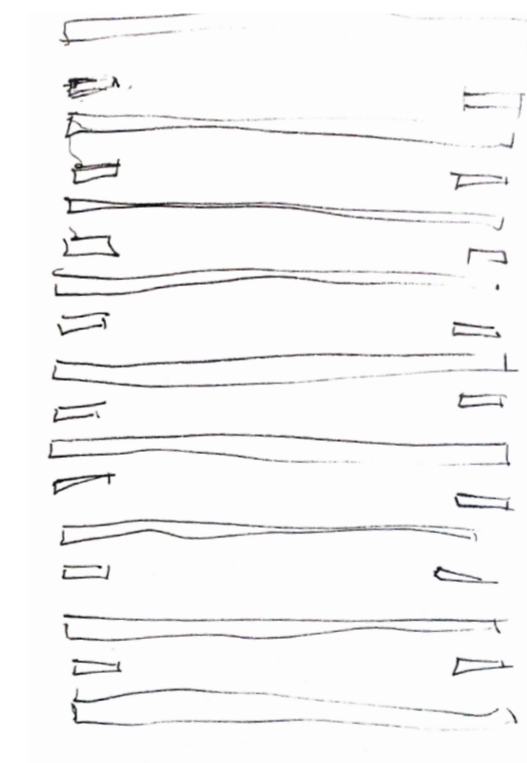
SCREEN



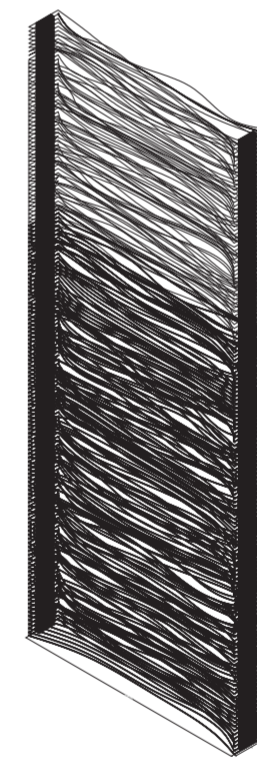
PLAN



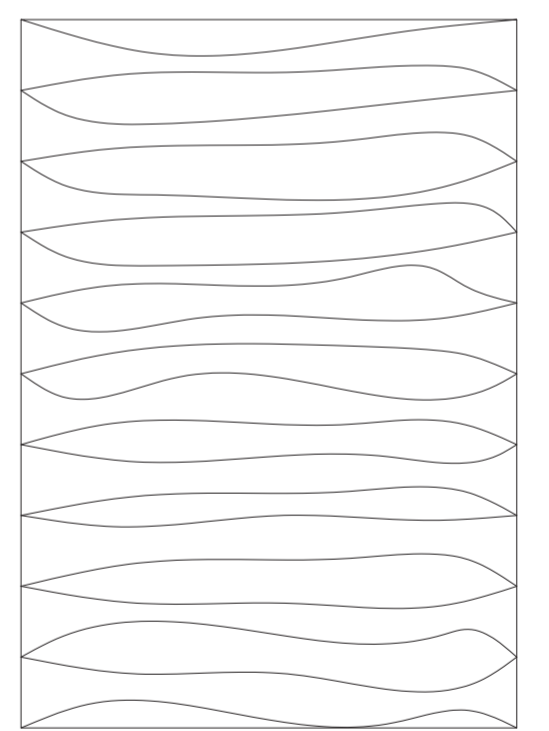
MAKING PROCESS



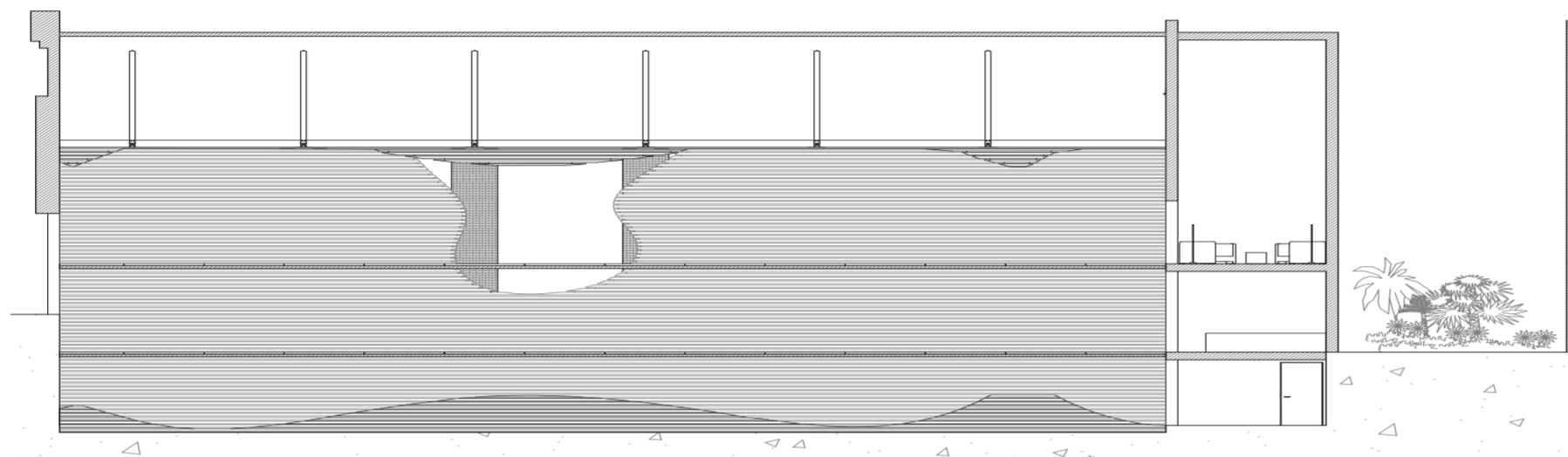
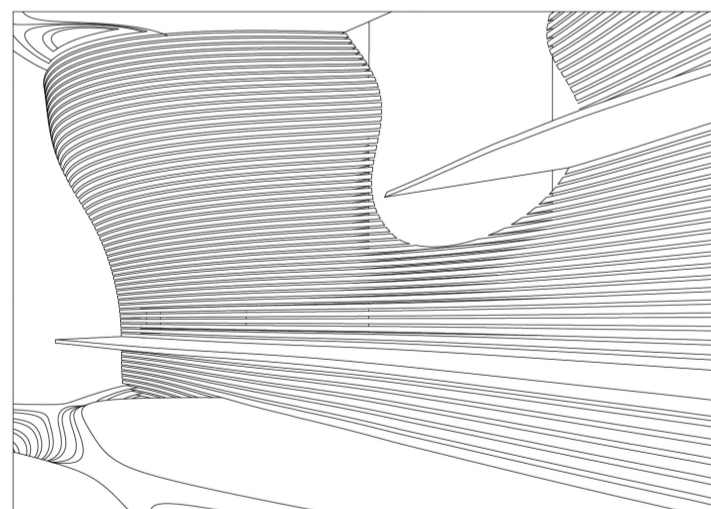
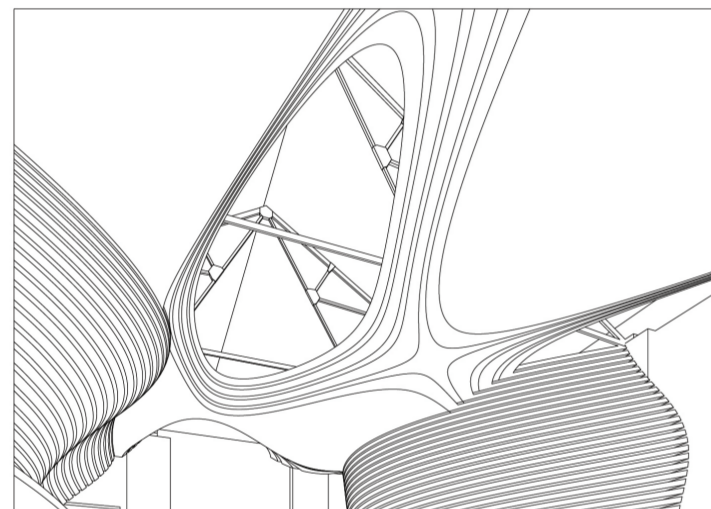
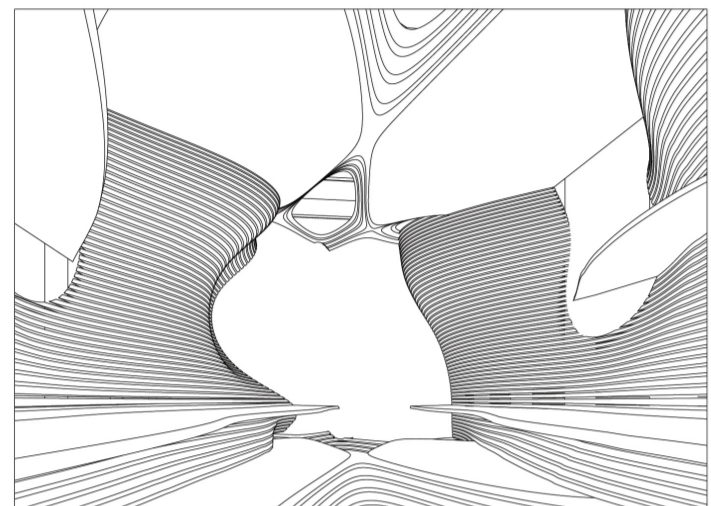
DESIGN DEVELOPMENT



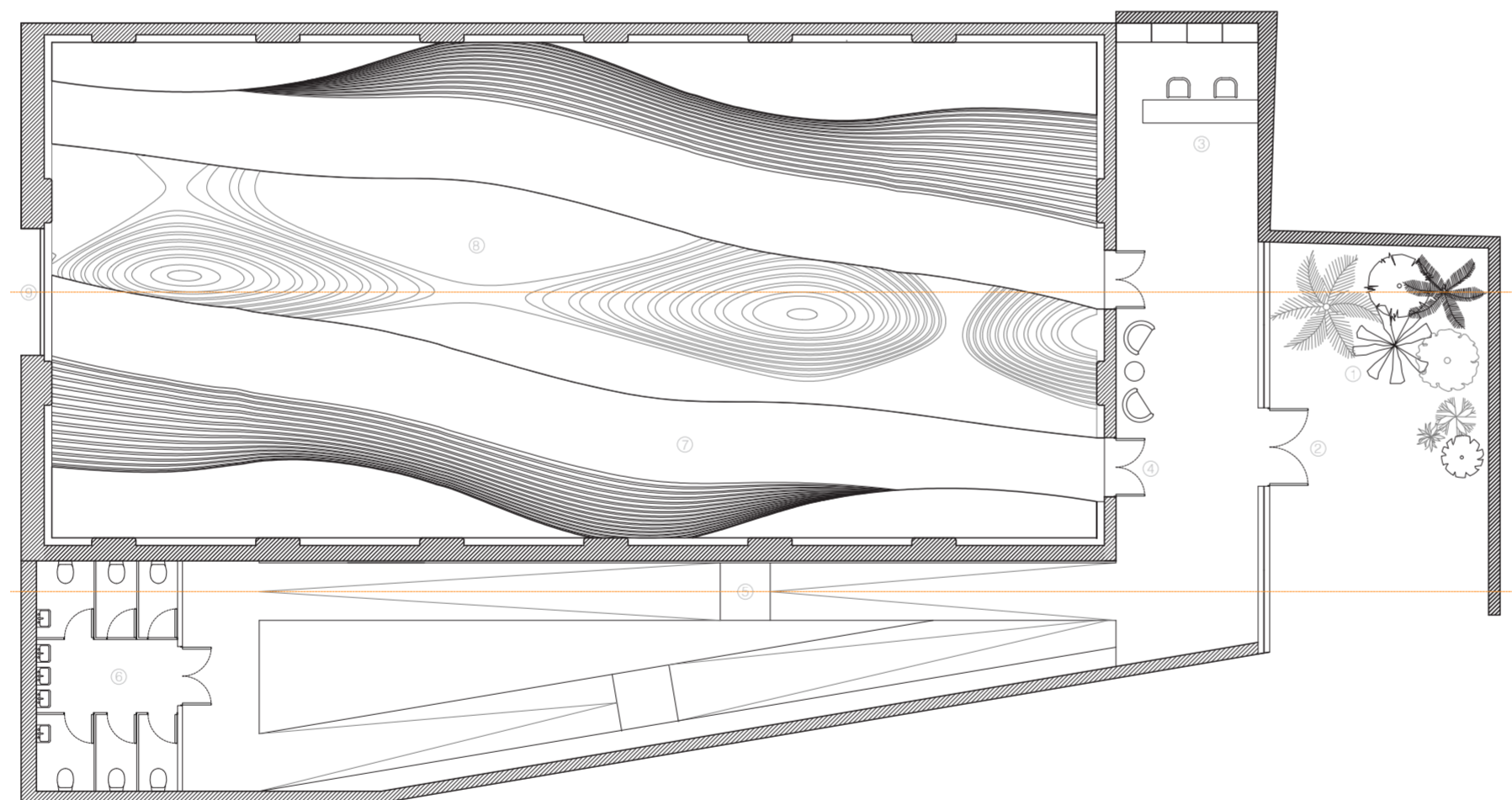
AXONOMETRIC



LASER CUT

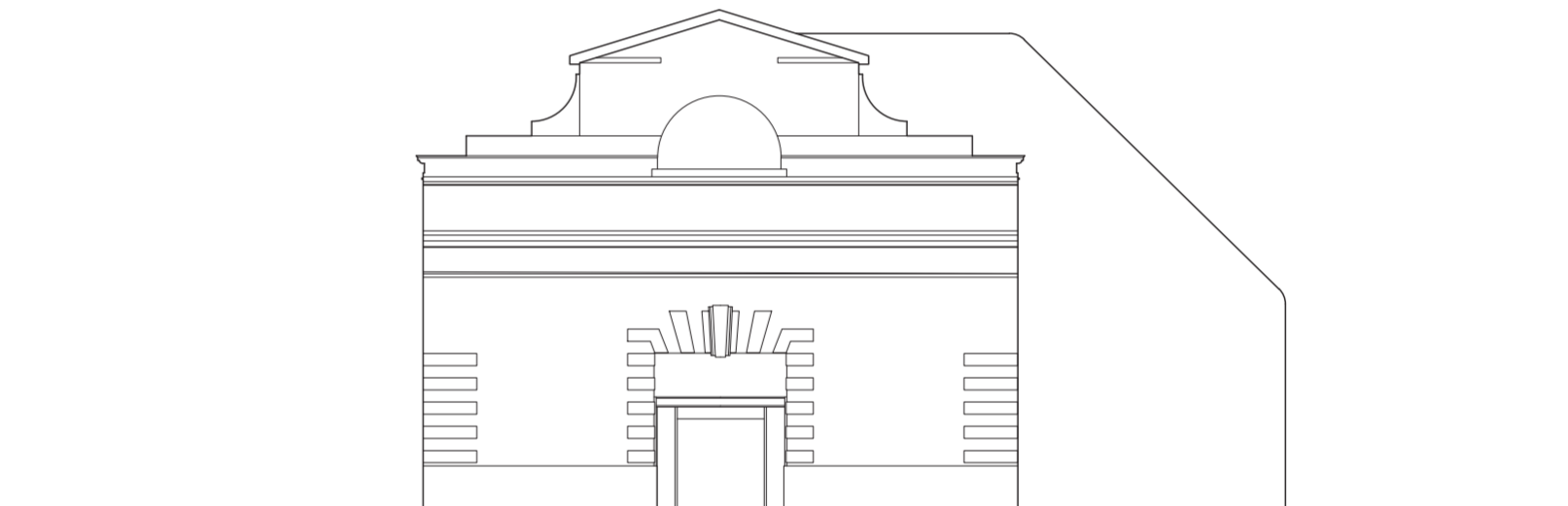


PROPOSED SECTIONAL DRAWING

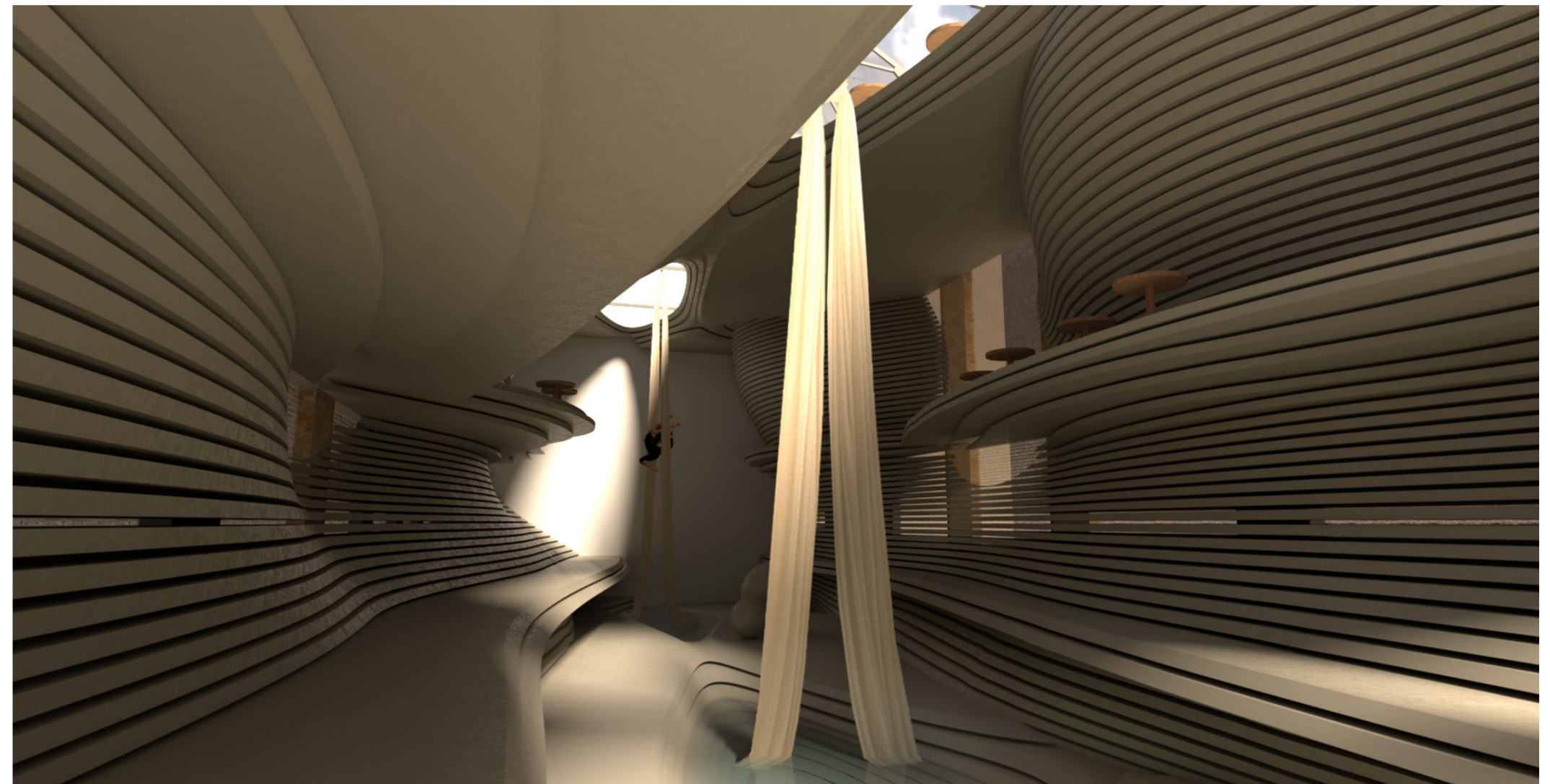


1. COURTYARD 2. NEW TRAMSHED ENTRANCE 3. BOX OFFICE 4. AUDITORIUM ENTRANCE 5. RAMP FOR PUBLIC ACCESS TO FIRST FLOOR 6. PUBLIC TOILETS 7. BRIDGES + AUDITORIUM 8. STAGE 9. OLD TRAMSHED ENTRANCE

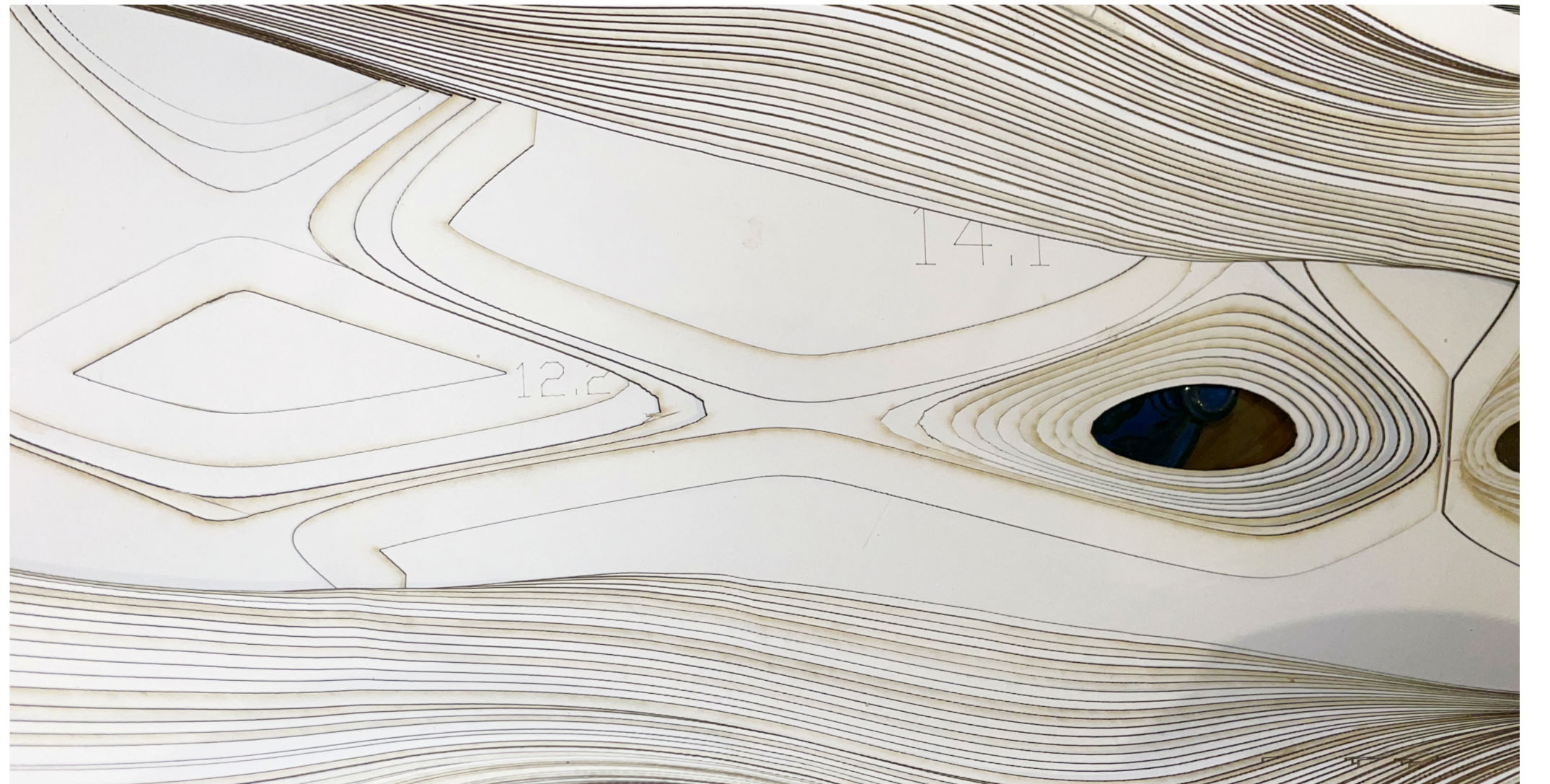
PROPOSED GROUND FLOOR PLAN



PROPOSED FRONT ELEVATION



CONCEPTUAL RENDER



PHYSICAL MODEL