

OPEN FOR BUSINESS

'Live' by Sara Trevain

Open for Business is a project that focuses on a Live and Work space for singer and song writer Baba Ali.

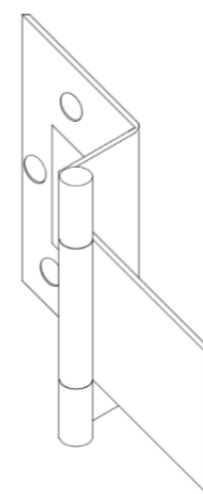
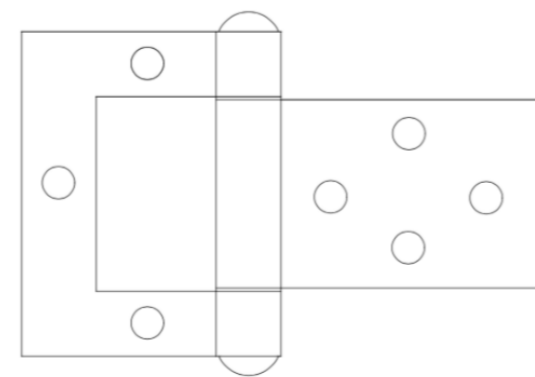
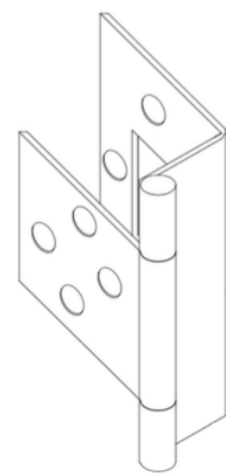
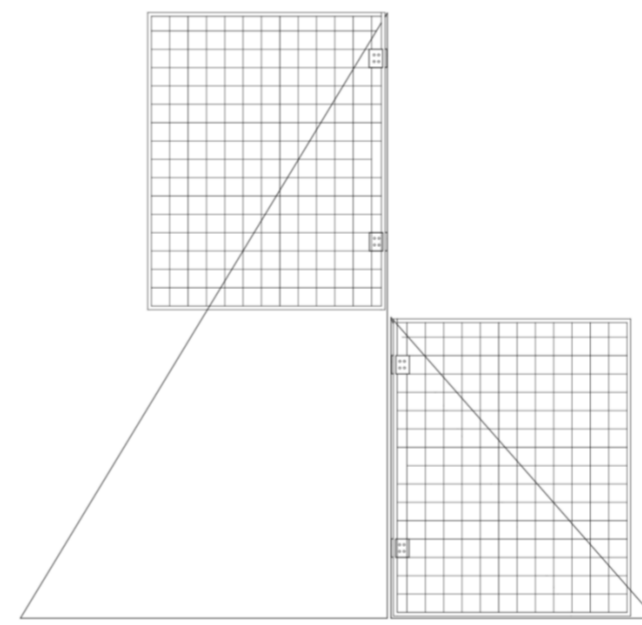
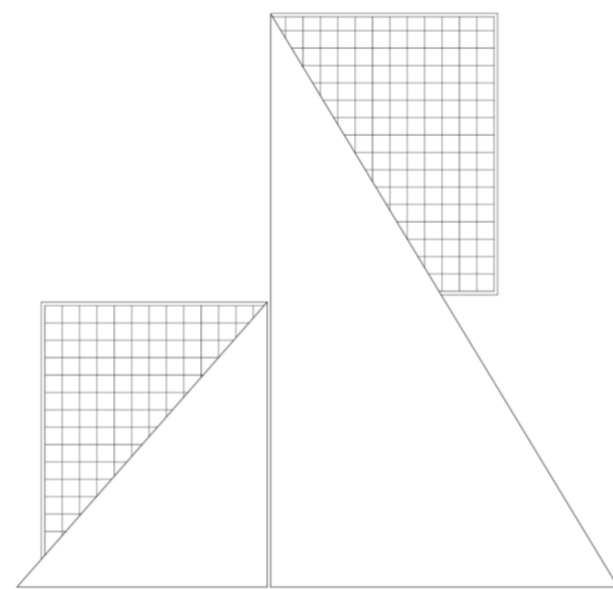
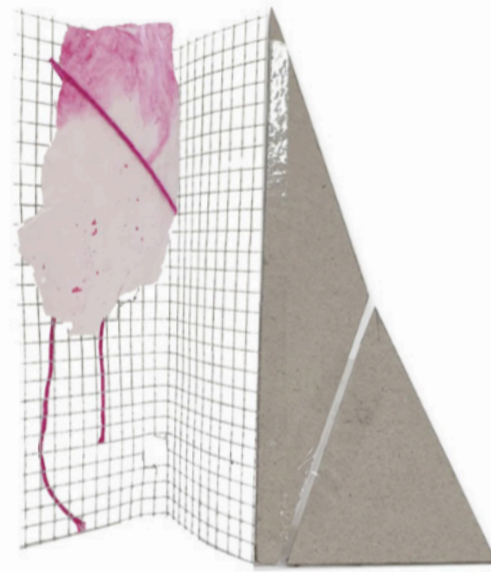
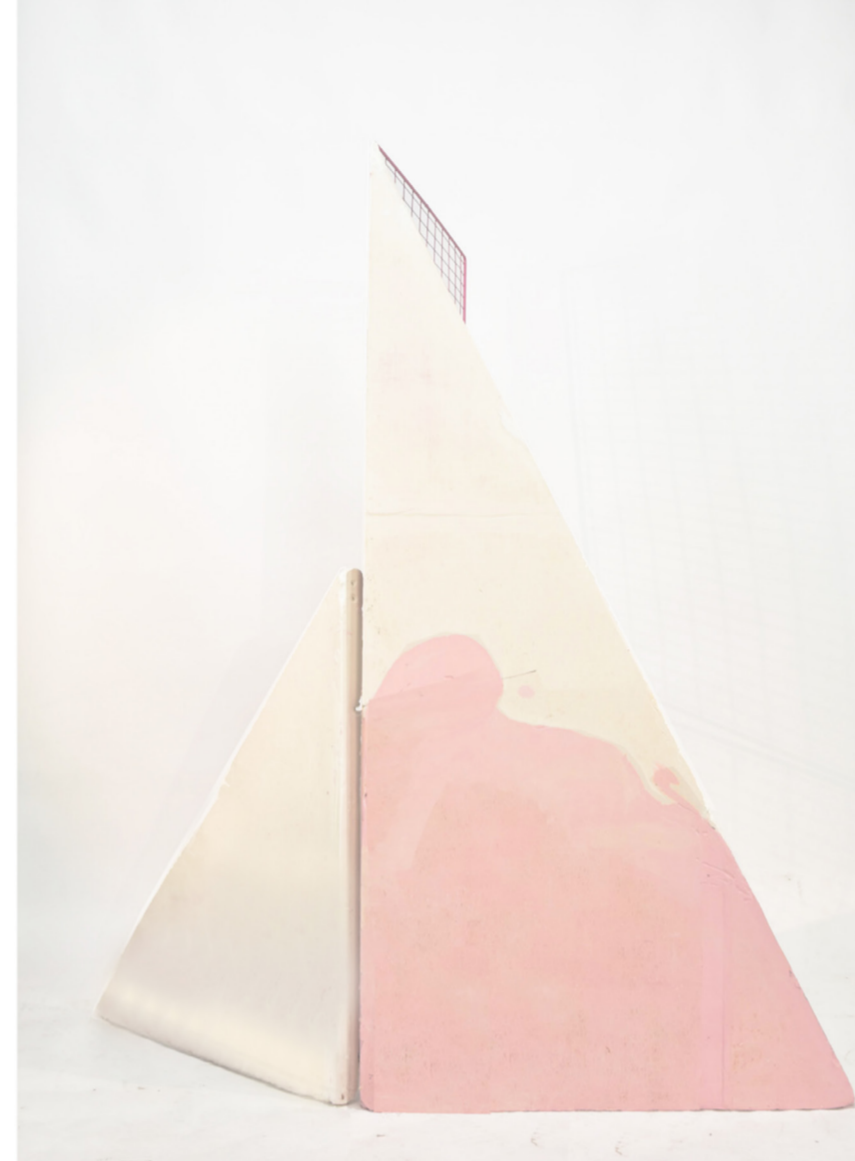
The brief for the project was to design a space that would allow my client to write and play music as well as collaborate with other artists and creatives, bringing together the community.

The focus of my design was to create an open, multi functional space that could be used by my client to live and work by having private and public areas that could be used to write music and practise music as well as perform his music live on his own and with other artists. The multi functional public areas are able to adapt to be used to exhibit various creative works by dividing areas by screens. These area include but are not limited to, sculpural exhibitions, art exhibitions, and various other social gatherings.



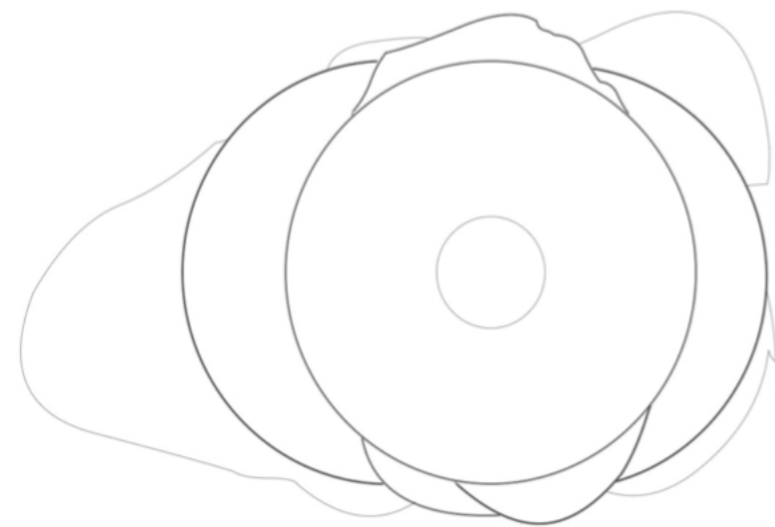
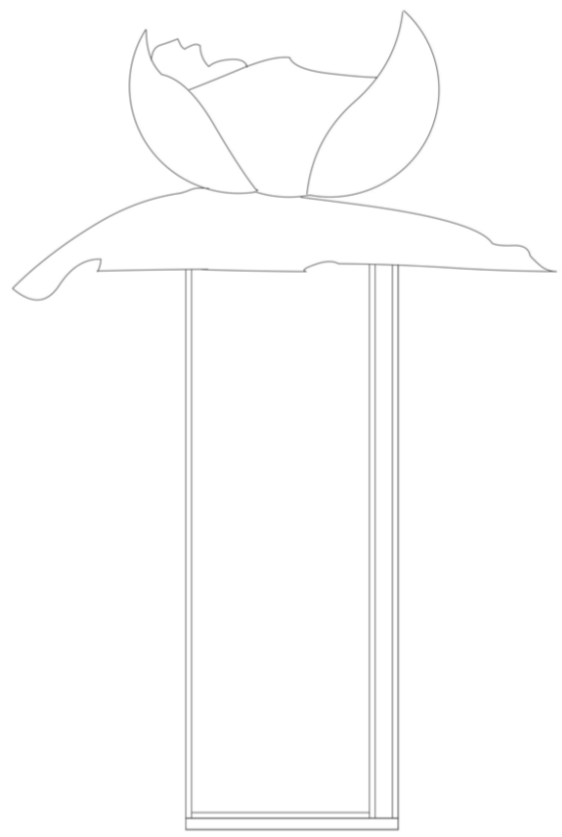
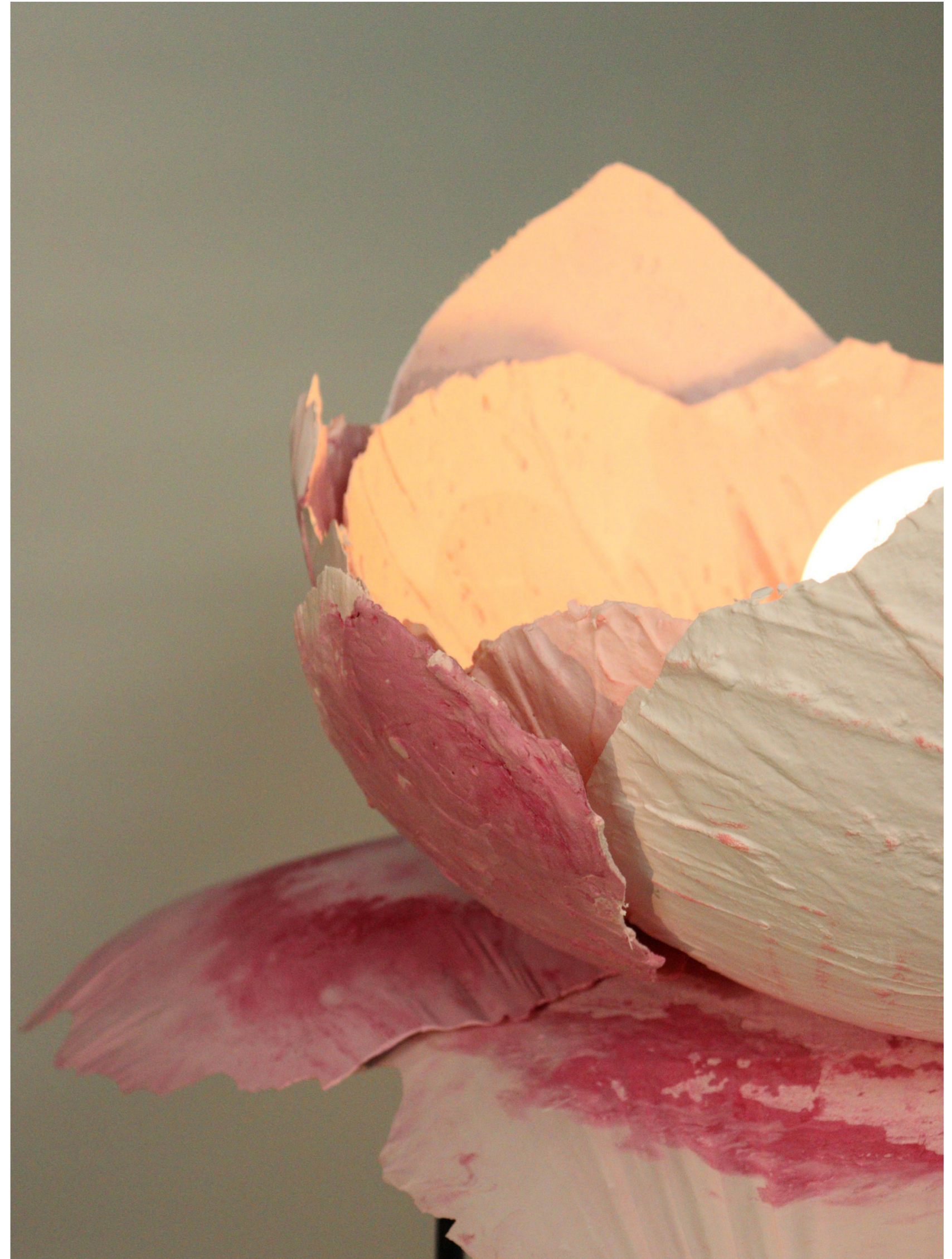
THE SCREEN

'I'm Still Standing'



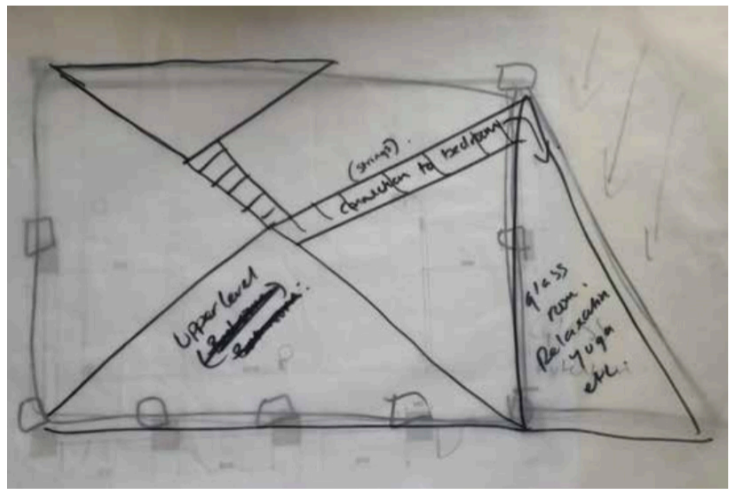
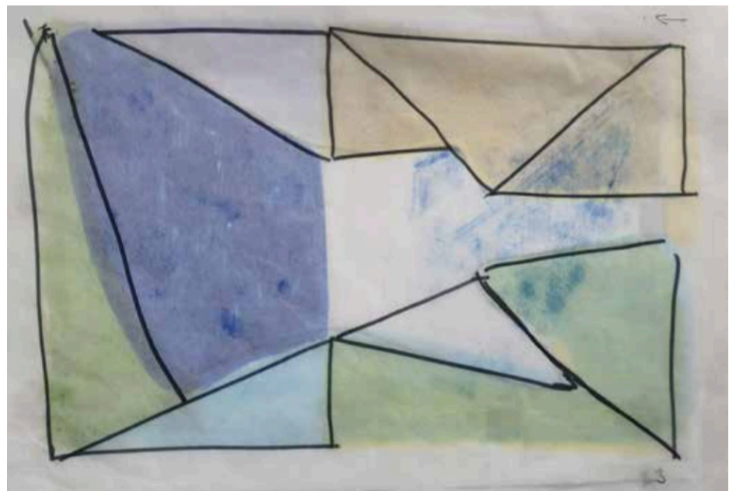
The Screen was designed and made using plaster and upcycled materials, such as, a copper fire guard, metal safety plates, left over pink paint, and discarded wood that i used to create my mould to cast the screen. The screen was a challenge as was created through the second lockdown and the entire process was produced in a home garage.

THE LAMP
'Treading on Eggshells'

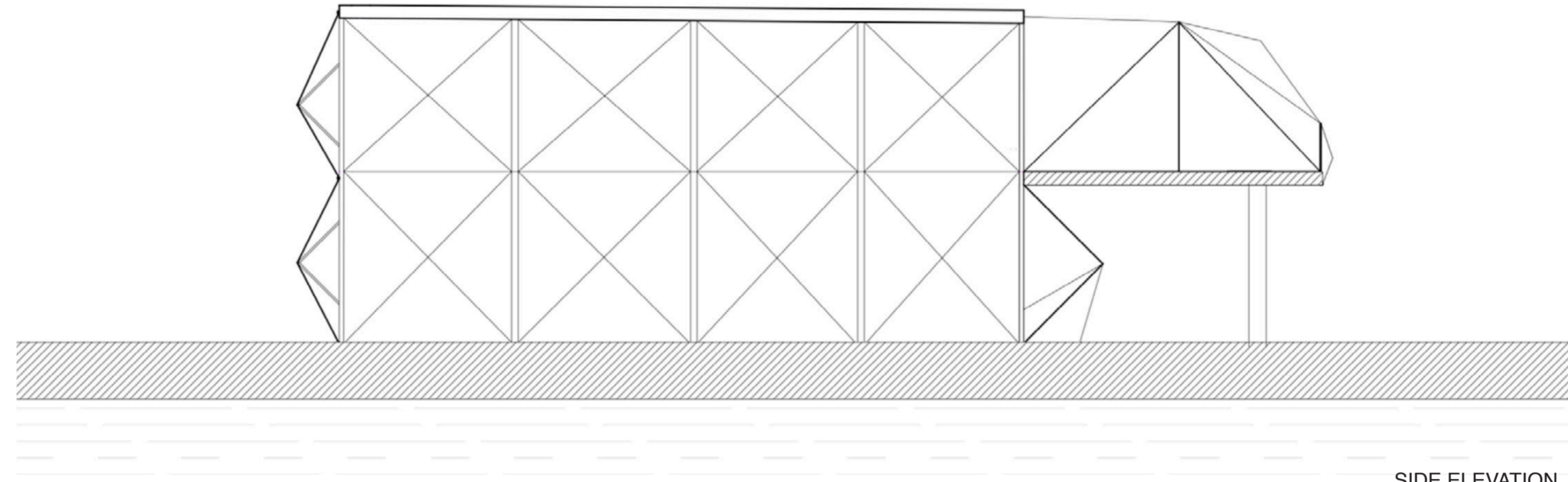


The Lamp was designed and made using plaster and pink paint with hessian rags soaked in plaster to hold the delicate casts together. The stand is made from black steel. The concept of the design which reflects in the title 'Walking on Eggshells' represents a humans reaction to a delicate situation that many of us feel throughout our lives.

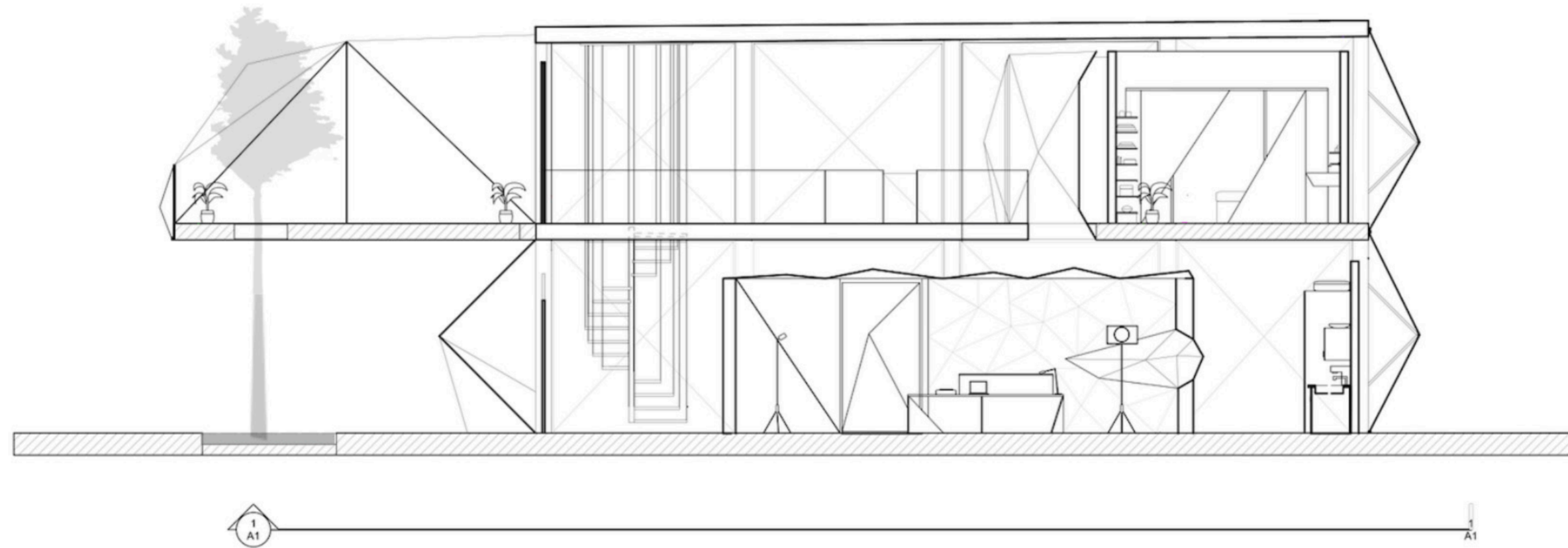
DESIGN DEVELOPMENT



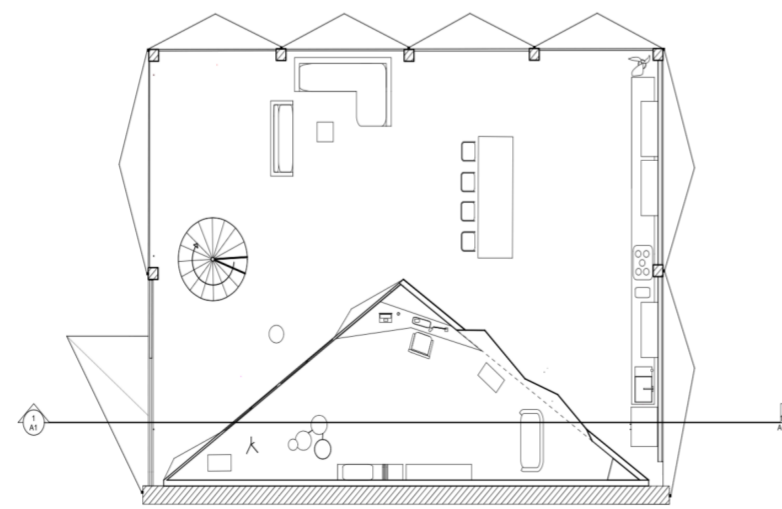
The design process for this project started with the design of a guitar to keep in line with the musicians background. I used an image and took shapes from this by drawing over detail paper multiple times until I came up with the final design layout.



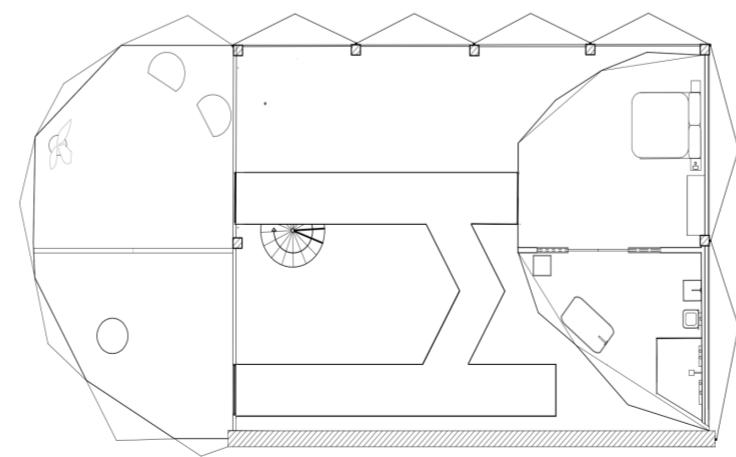
SIDE ELEVATION



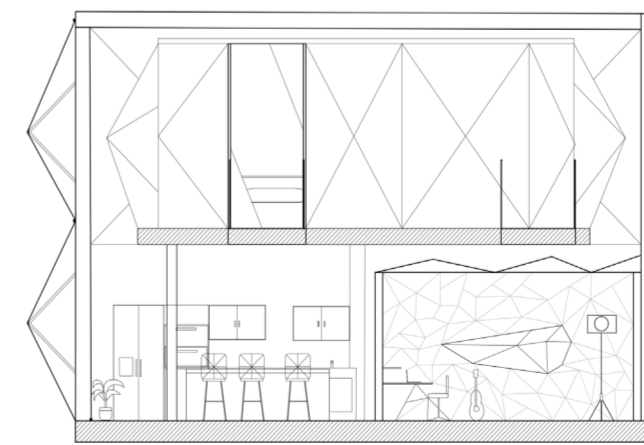
LONG SECTION



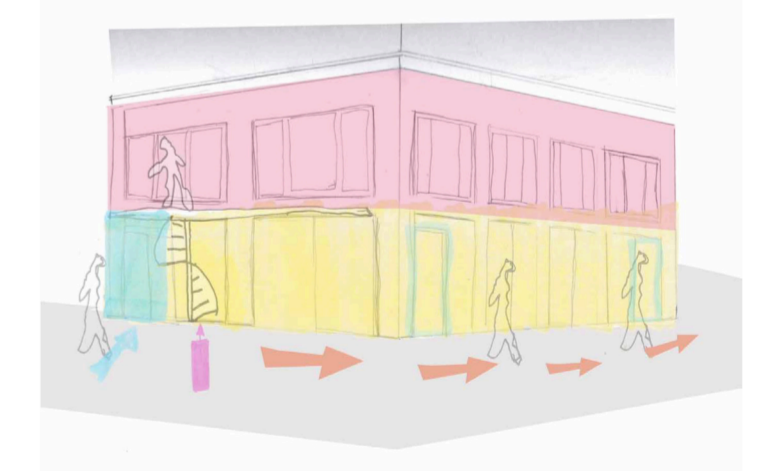
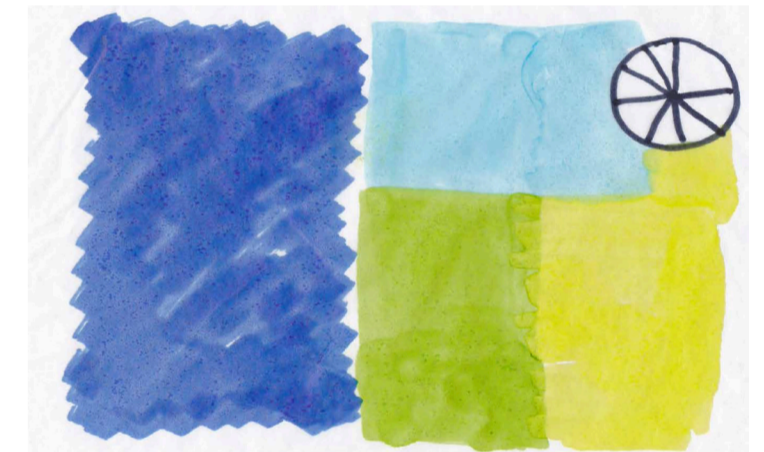
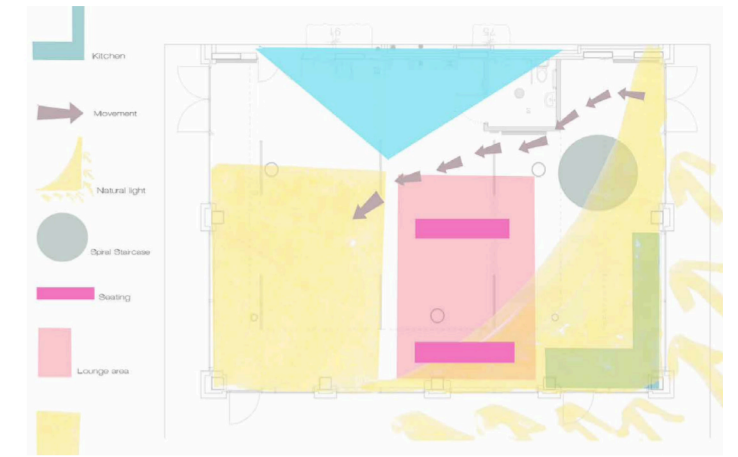
GROUND FLOOR PLAN



FIRST FLOOR PLAN



SHORT SECTION



After deciding on the geometry of the design I made various zoning diagrams to establish the appropriate routes and positions throughout the design.



CONCEPT COLLAGES

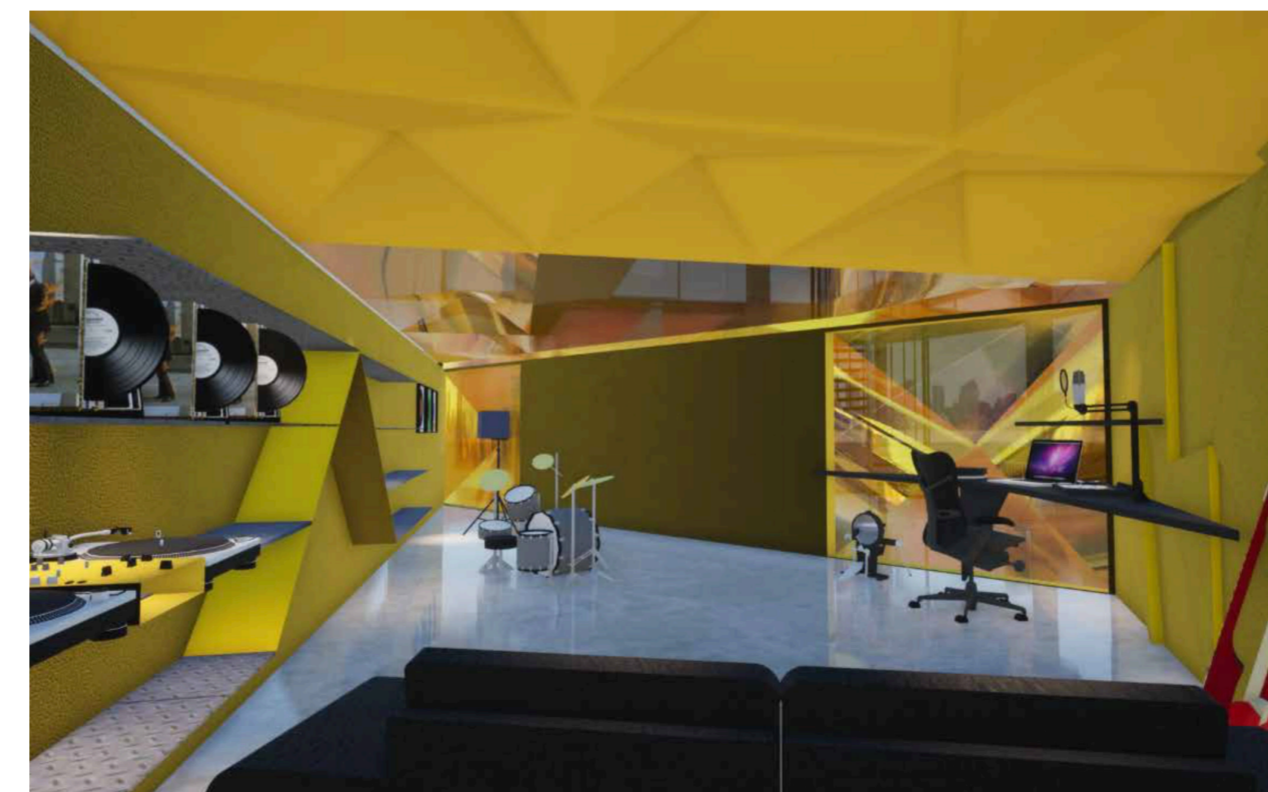
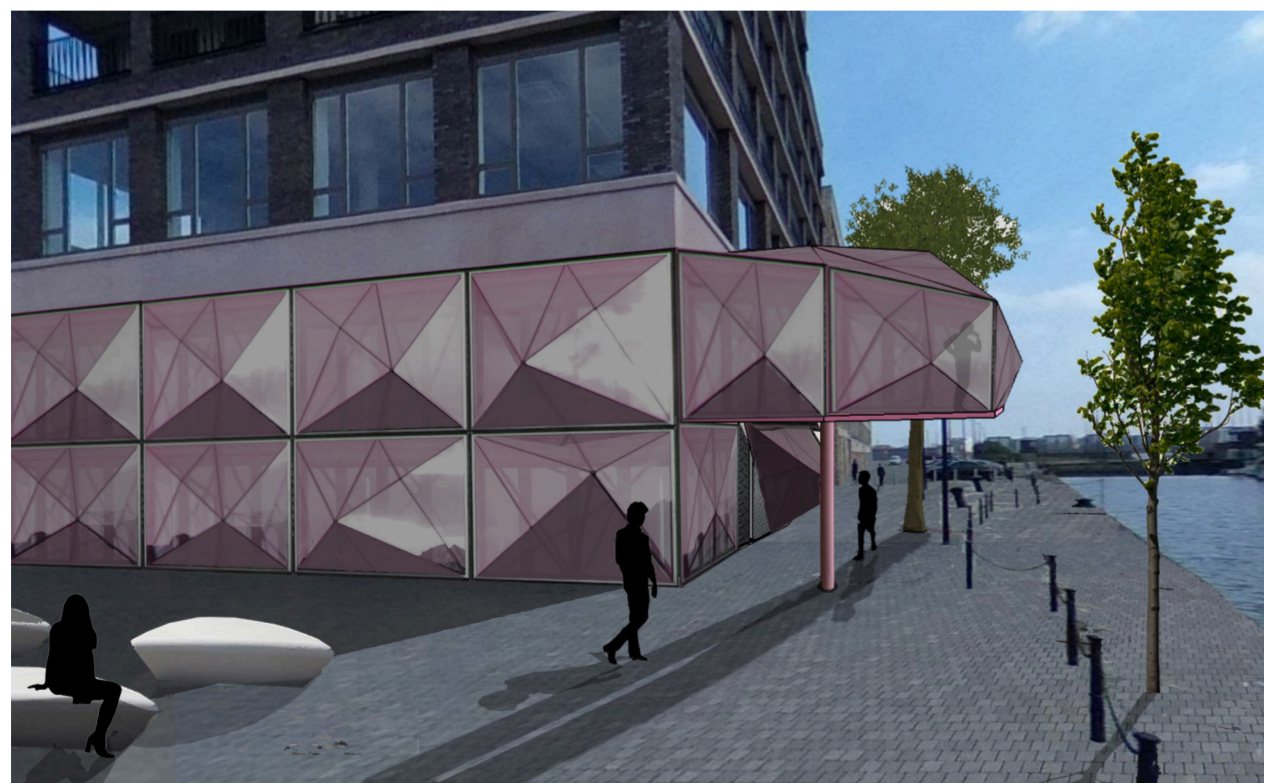


1 Pink Glass 988088 2 Yellow Acoustic Foam B89028 3 Steel Metal 4 Concrete floor

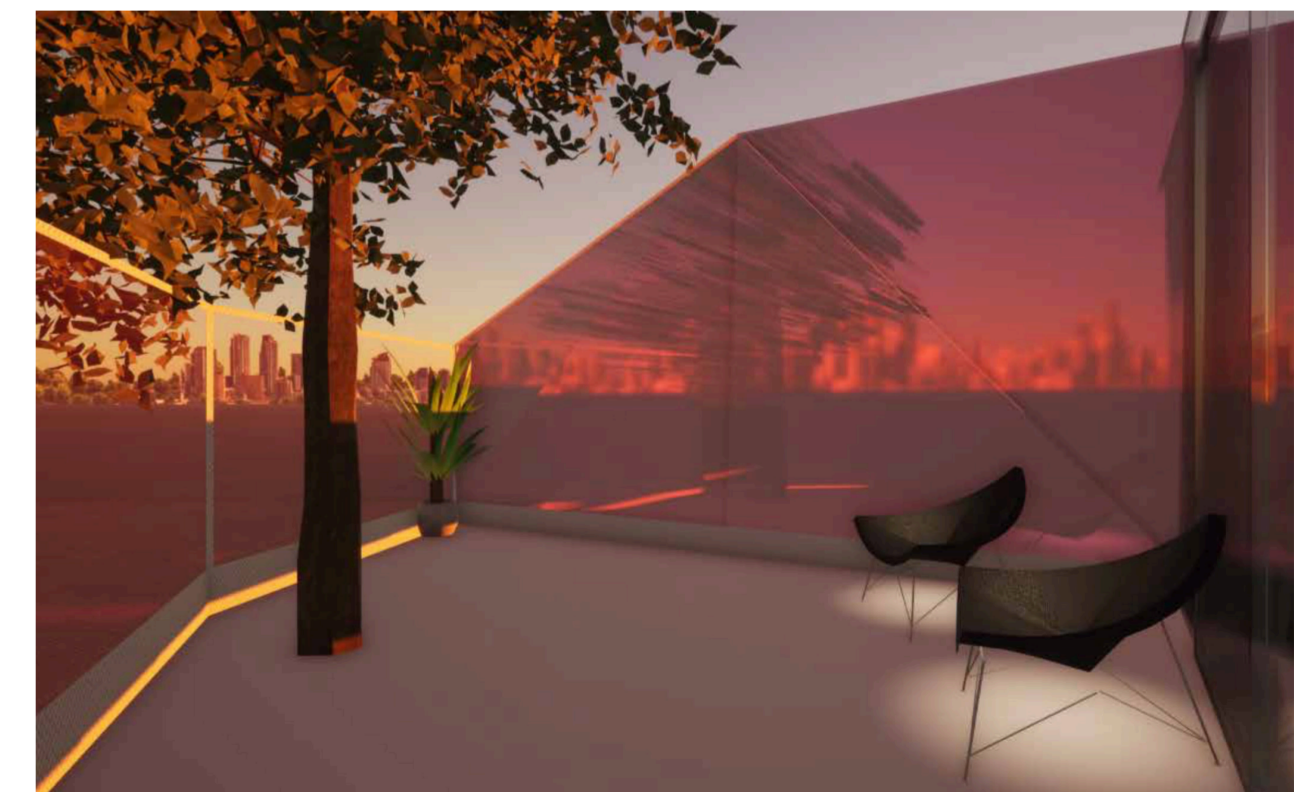
MATERIALS PALETTE



SKETCHUP MODEL REND-
DERED USING PHOTOSHOP



SKETCHUP MODEL REND-
DERED USING TWINMOTION



SKETCHUP MODEL REND-
DERED USING TWINMOTION