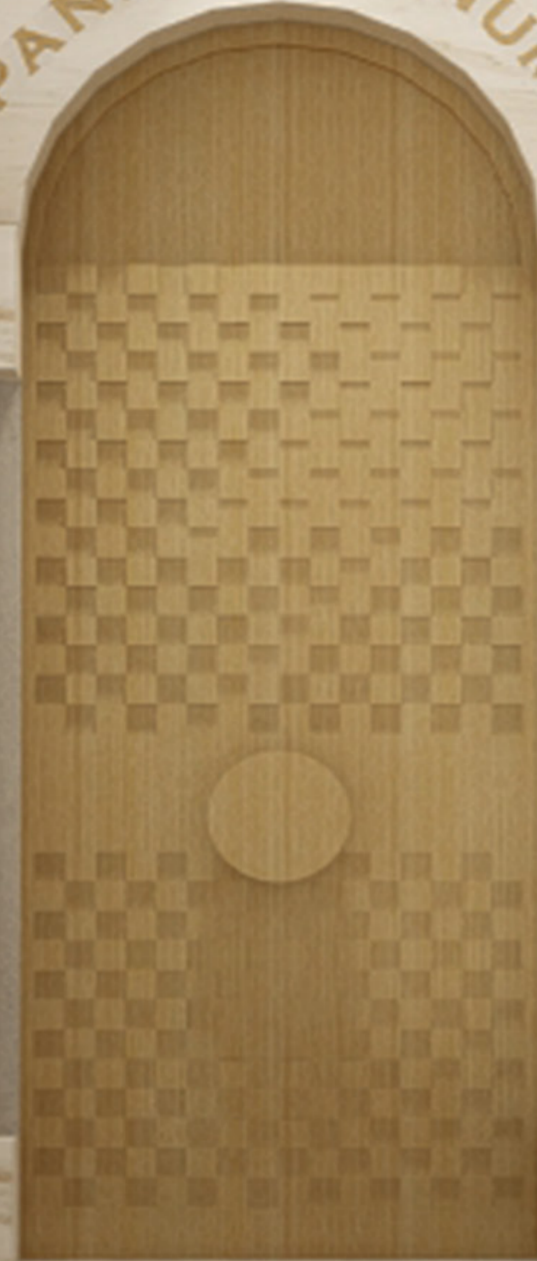


PANEM ET VINUM

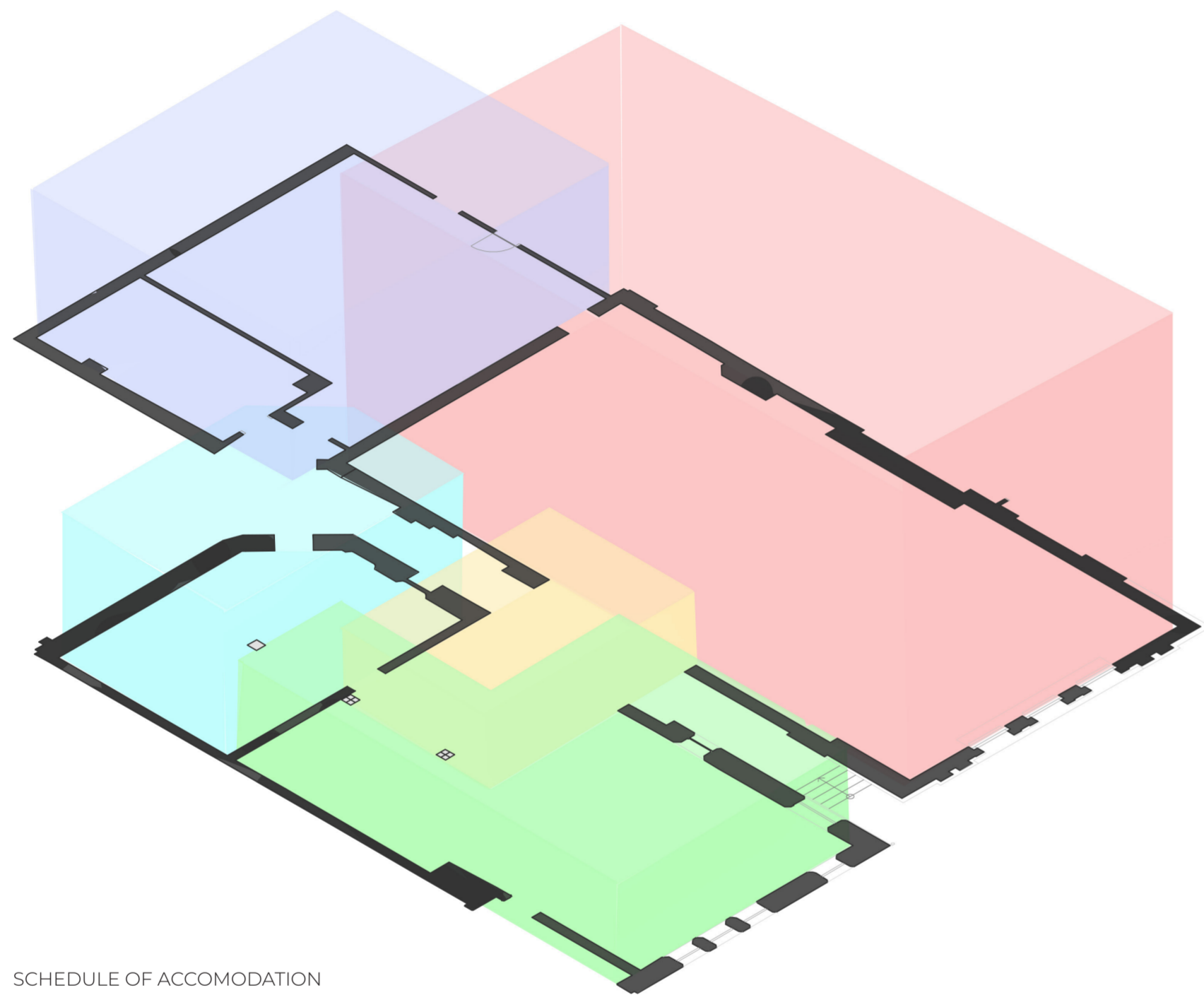


PANEM ET VINUM

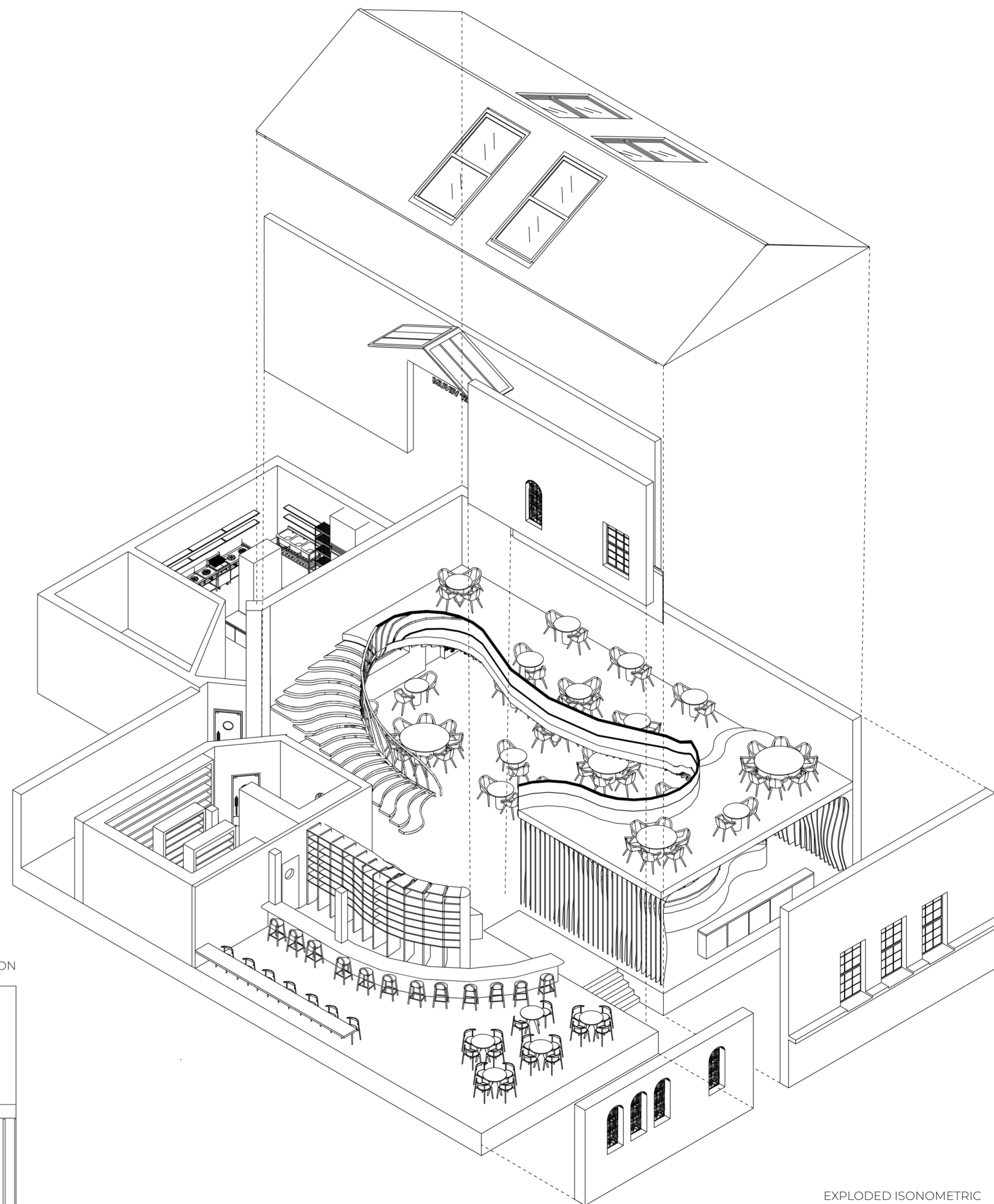
— ...AND FEASTS THEY ARE —

FOR THIS BRIEF WE WERE CHALLENGED TO DESIGN A SUSTAINABLE RESTAURANT AND FOOD BANK IN THE REAR HALLS OF HISTORIC CHURCH; WESTMINSTER CHAPEL TO PROVIDE AN EXCITING DESTINATION AS WELL AS A GENEROUS AND NON-JUDGMENTAL SPACE FOR THOSE WHO NEED FOOD TO BE SUPPORTED.

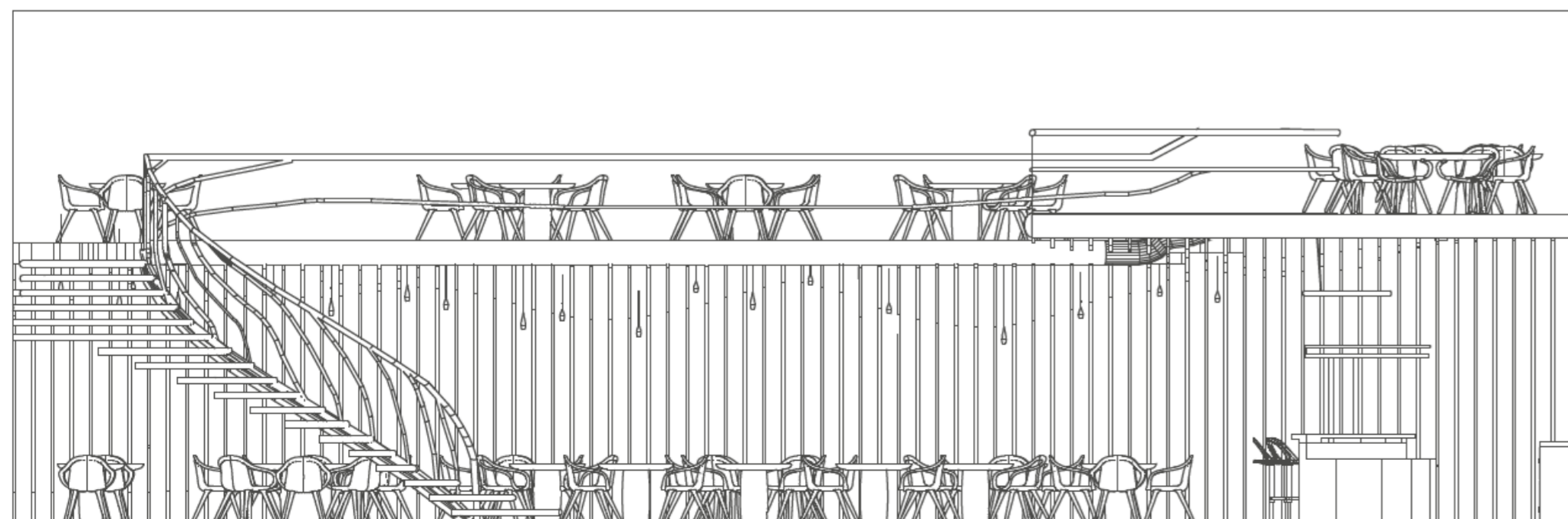
SUSTAINABILITY FOR RESTAURANTS MEANS OPERATING IN A WAY THAT PROTECTS, PRESERVES OR RESTORES THE NATURAL ENVIRONMENT, PROMOTES SOCIAL EQUITY, ENHANCES THE LIVES OF PEOPLE AND COMMUNITIES AND CONTRIBUTES TO ECONOMIC PROSPERITY FOR SHAREHOLDERS AND STAKEHOLDERS.



SCHEDULE OF ACCOMODATION



EXPLODED ISONOMETRIC



INTERNAL ELEVATION

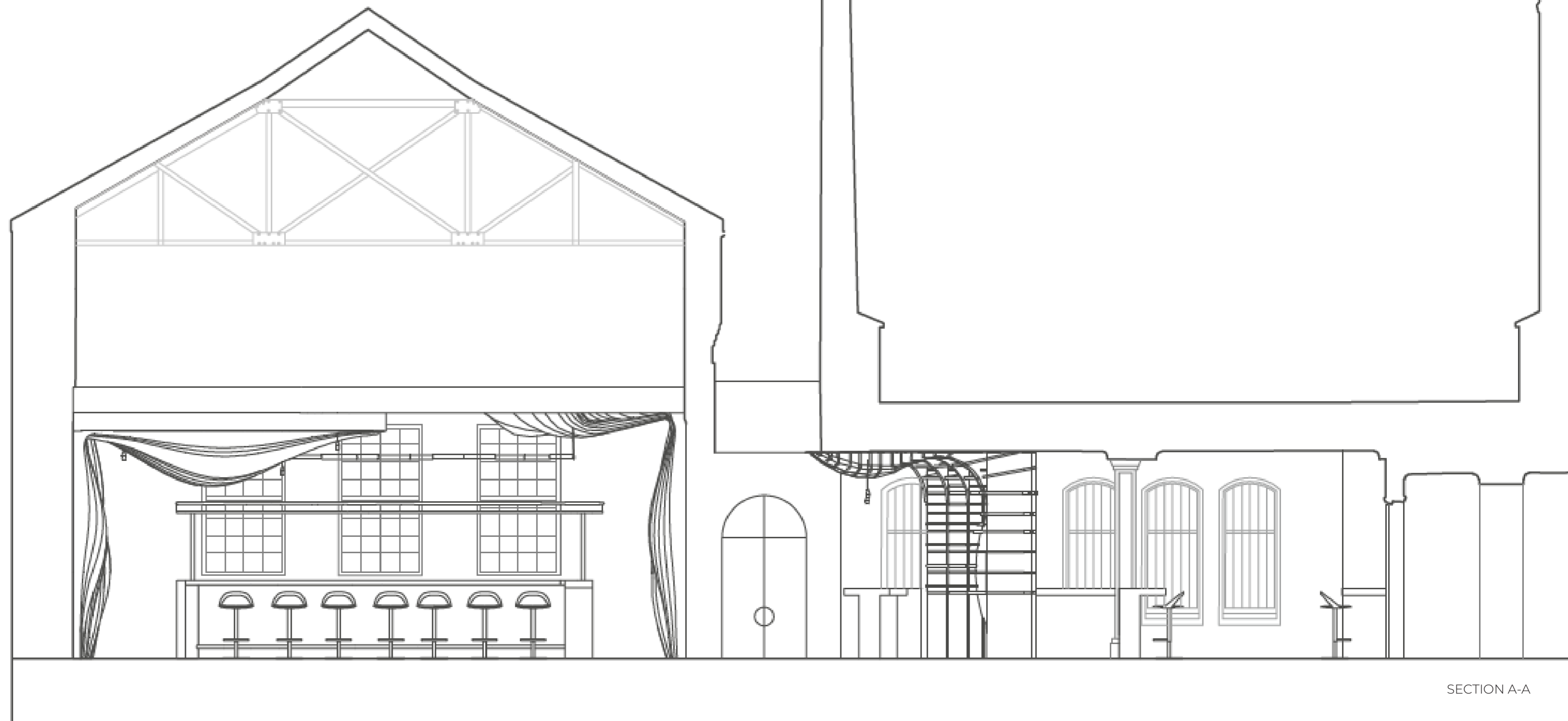


RENDERED VISUAL OF THE INTERIOR

A FOOD BANK OFTEN HAS A VERY BAD IMAGE BECAUSE IT IMPLIES POVERTY, BEGGING FOR SOMEHOW NEGATIVELY VULNERABLE - BUT IT ALSO ILLUSTRATES THE LACK OF CARE FROM THE GOVERNMENT TO MAKE SURE EVERYONE IS FED. THE CHURCH THROUGHOUT HISTORY HAS AND SHOULD HAVE A CENTRAL ROLE IN HELPING THOSE IN NEED AS WELL AS OURSELVES. THE CHALLENGE IS TO MAKE SURE THE IMAGE AND TITLE OF THIS CHARITABLE SERVICE BANK IS RE INTRODUCED TO THE PUBLIC AS A 'SUSTAINABLE FOOD CENTRE.'



SITE ANALYSIS



SECTION A-A

