

# 'Take me to the Nail Bar'

The project was to design a nail bar in Stratford, East London. Having researched nail bars I felt there was a gap in the market for Nail bars with childcare. This idea of providing a sanctuary for parents where they could leave their children in a safe environment while they engaged in some self care.



Spatial Analysis



Site Analysis



Shop front elevation

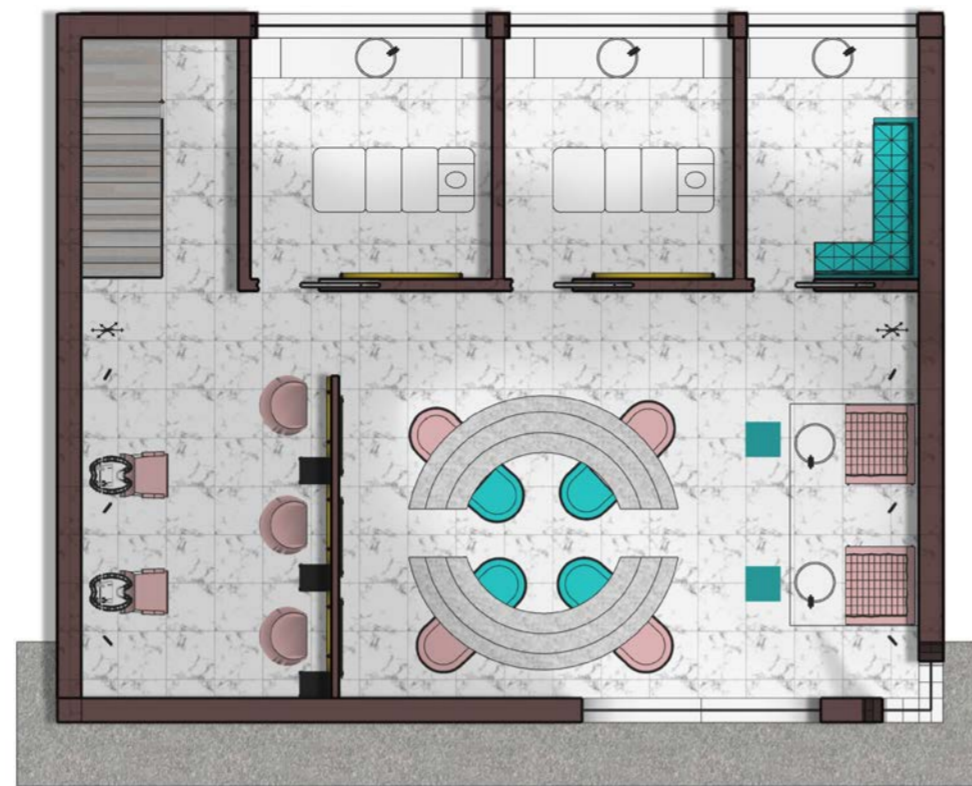


Exploded axonometric drawing

# Development and Materiality



Ground floor plan containing a reception, waiting area, WC and two playrooms



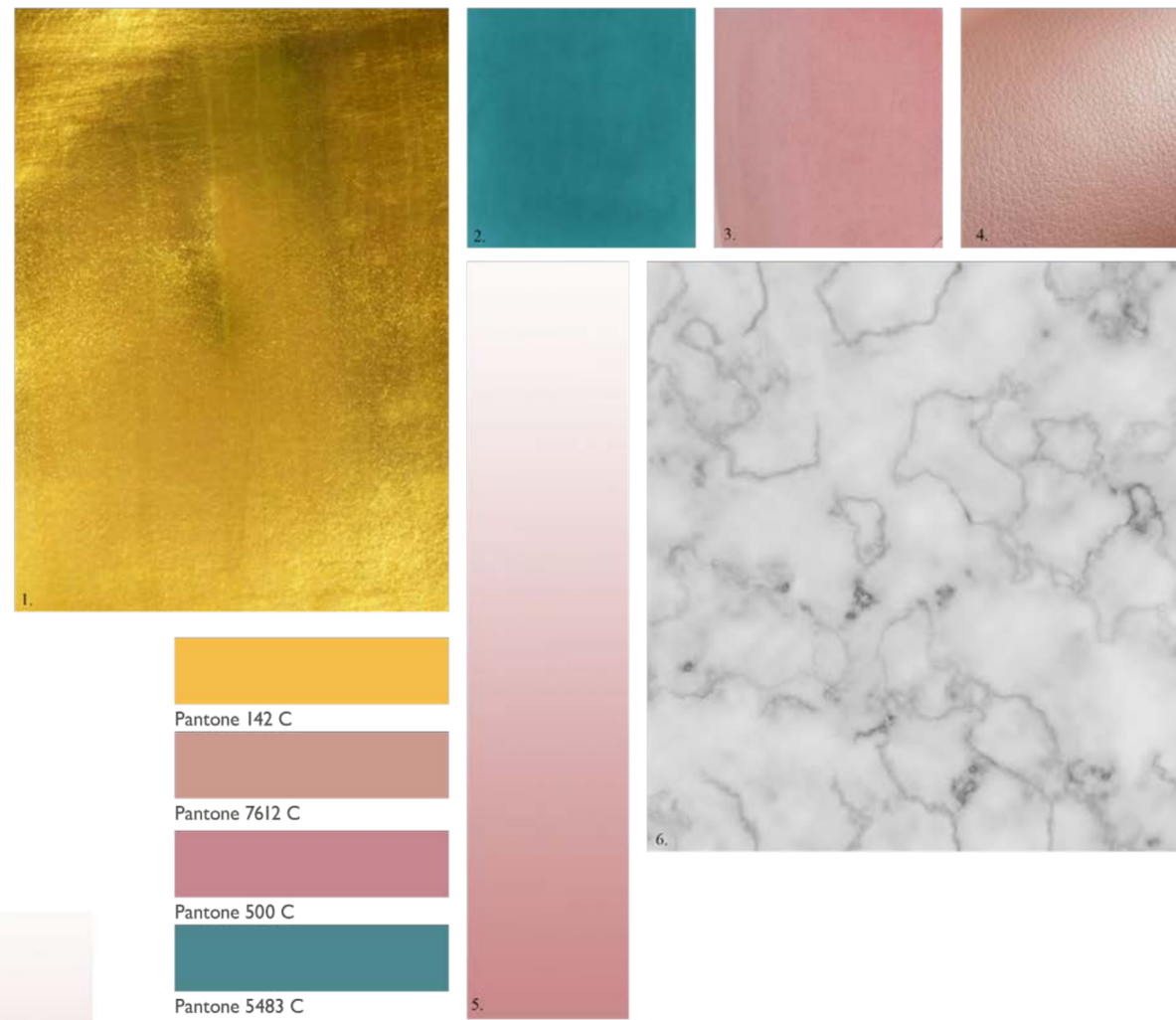
First floor plan containing beauty salon areas including hairdressing, manicure and pedicure areas as well as two treatment rooms and a break room



## KEY

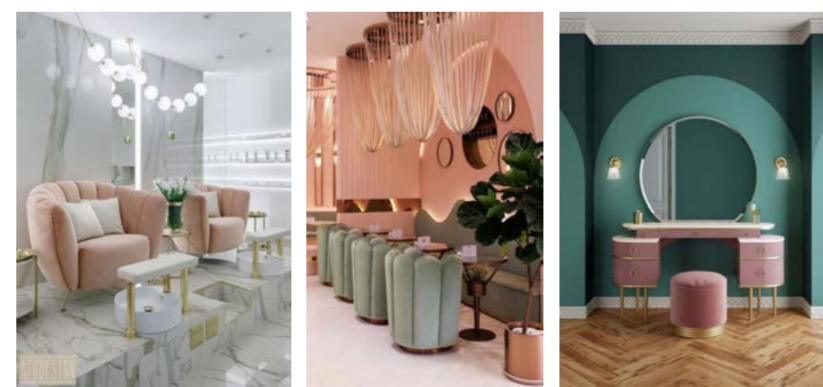
1. Gold
2. Green Velvet
3. Pink Velvet
4. Pink Leather
5. Pink to white gradient paint
6. Marble

The materials used throughout the project were inspired by the precedents shown below. The aim was to create a feminine, luxurious and relaxing atmosphere to provide a feeling of calmness.

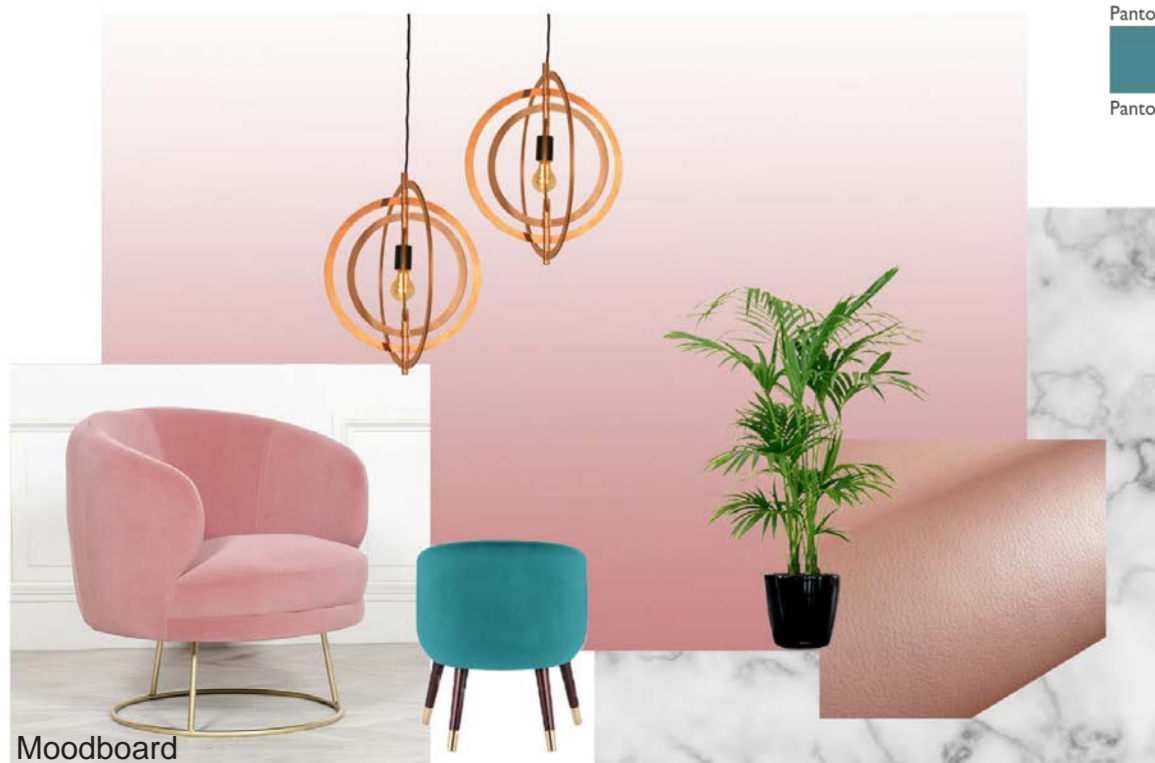


- Pantone 142 C
- Pantone 7612 C
- Pantone 500 C
- Pantone 5483 C

## Material palette



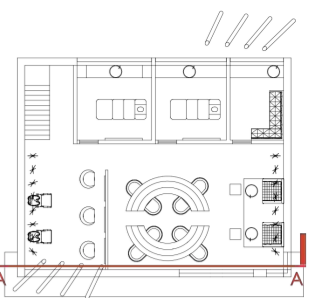
Precedents



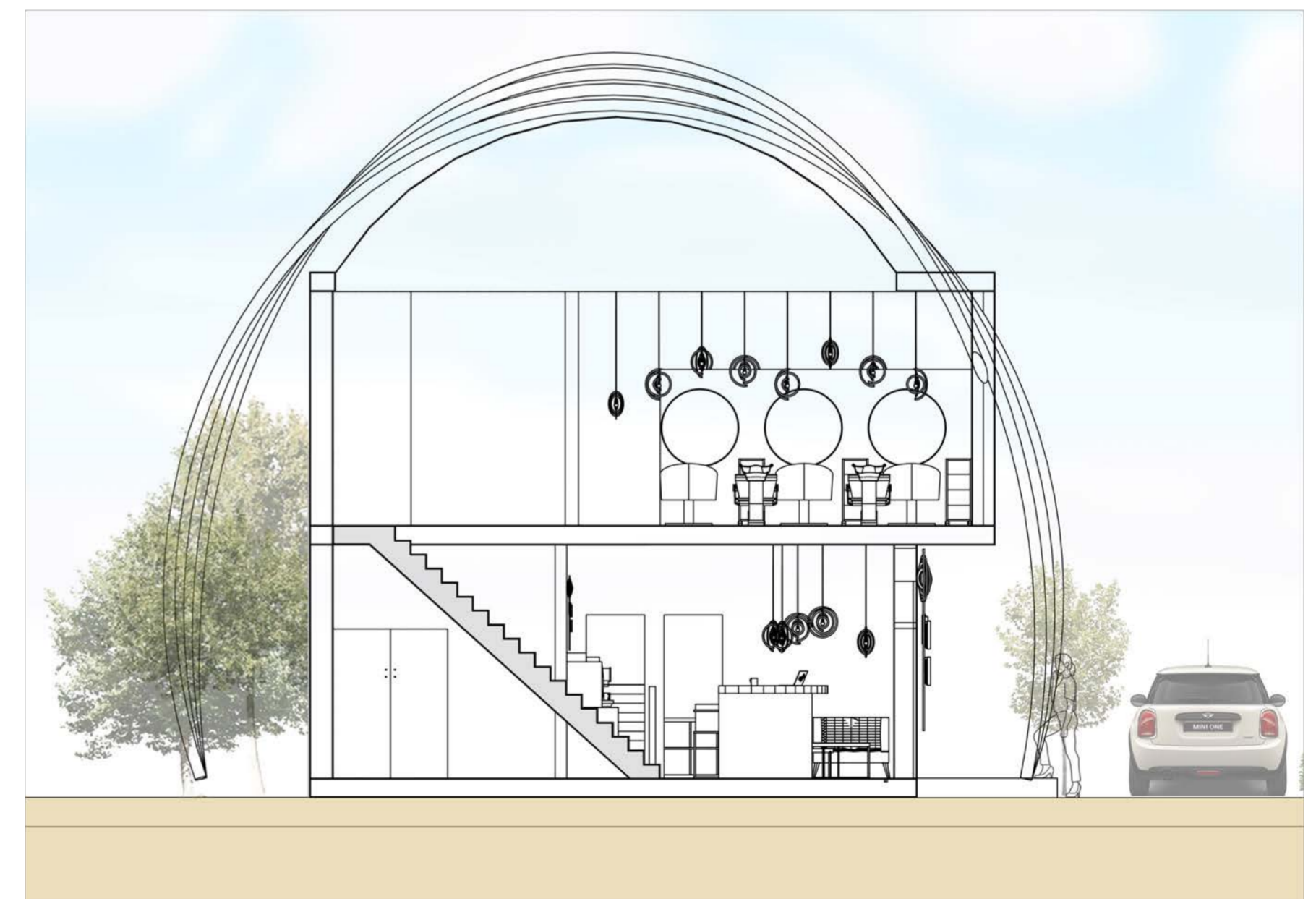
Moodboard



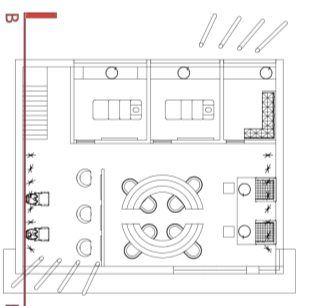
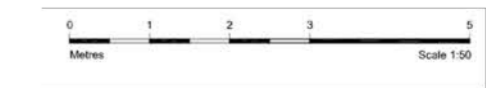
Long Section AA



KEY PLAN

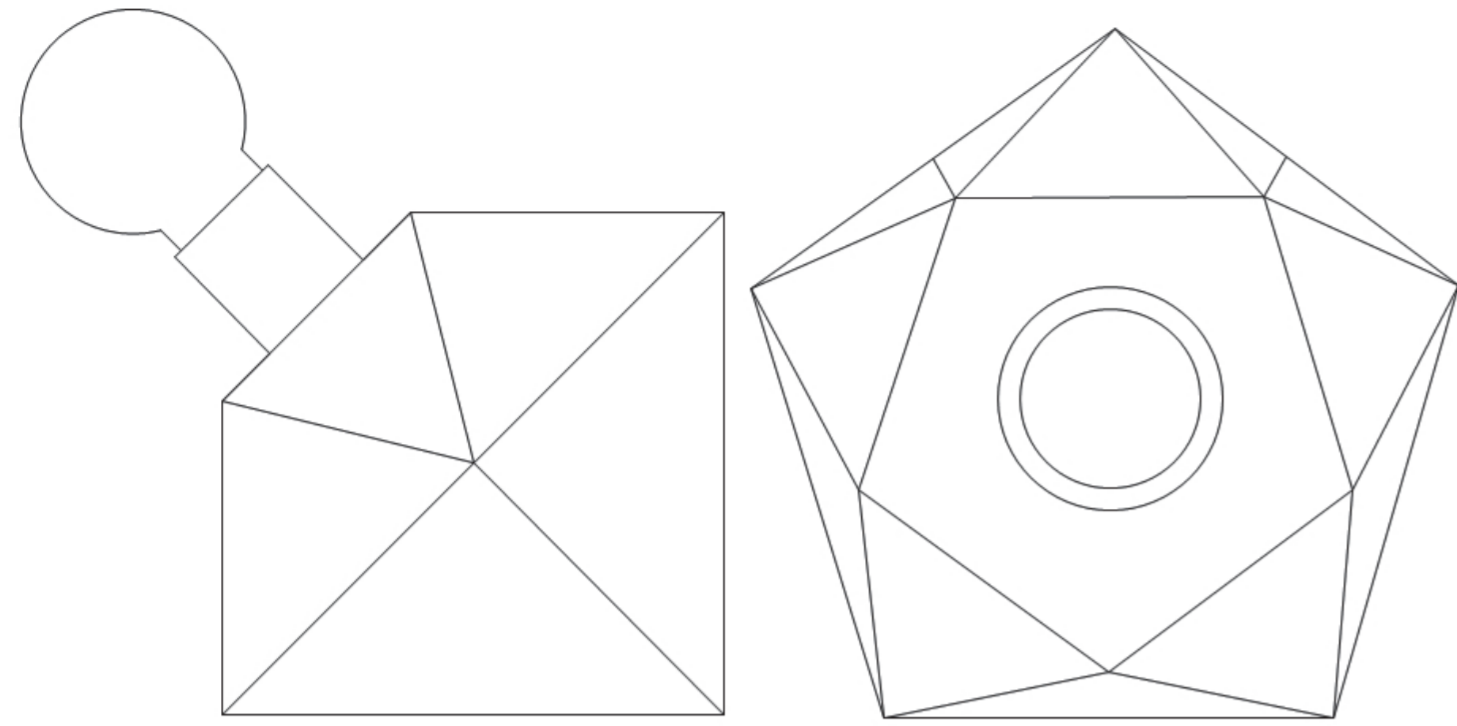


Short Section BB

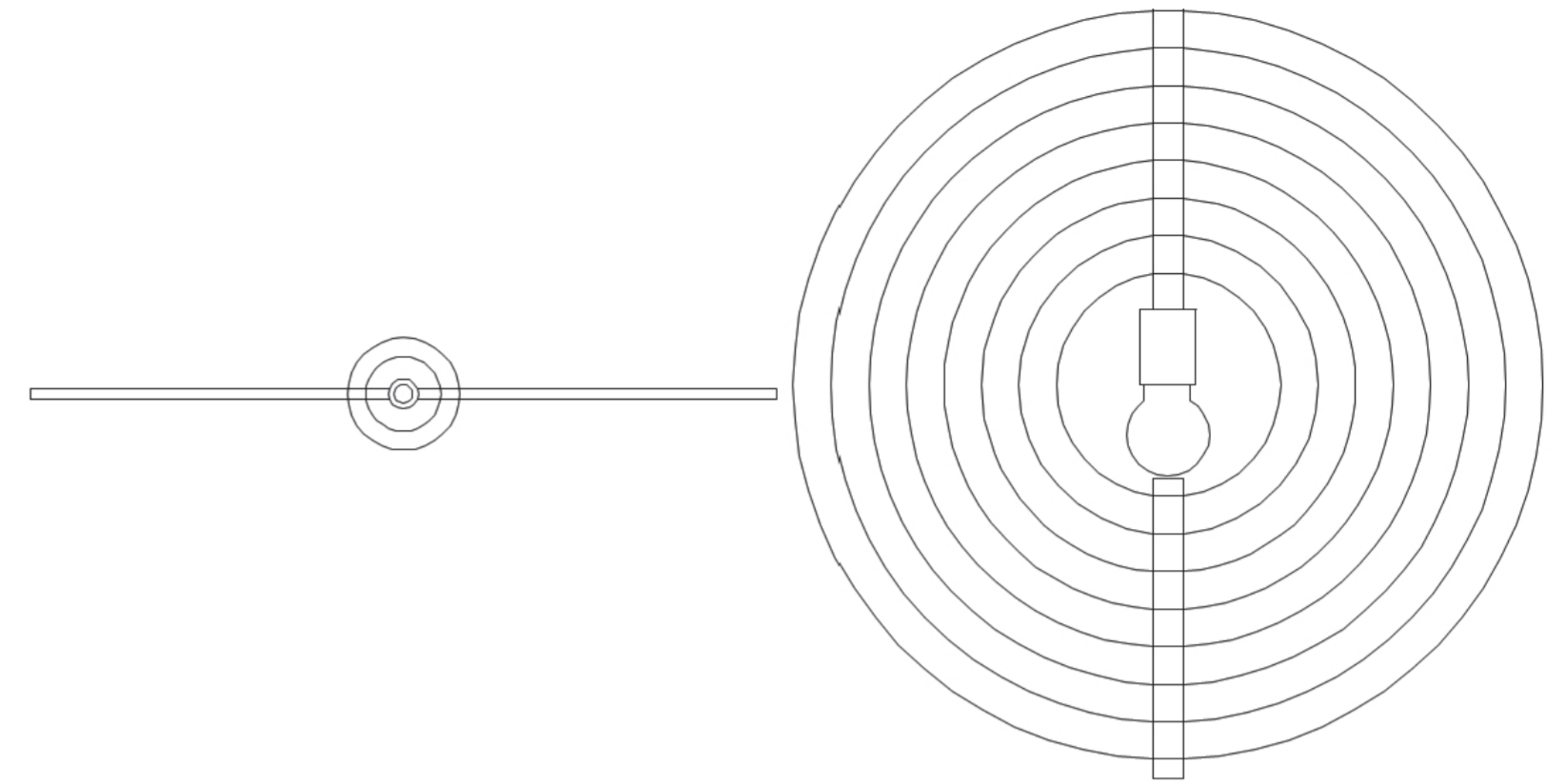


KEY PLAN

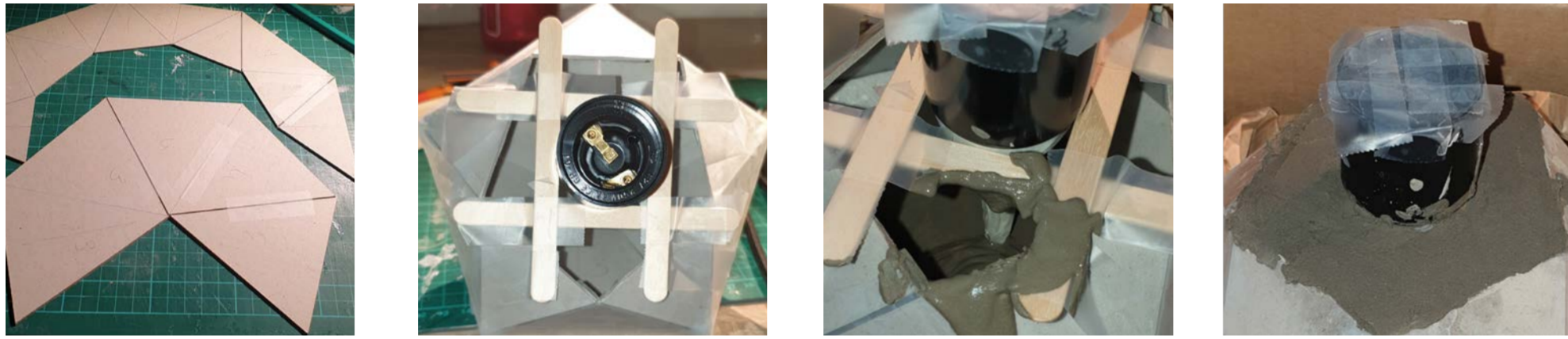
Lamp Designs



Elevation and plan views



Elevation and plan views



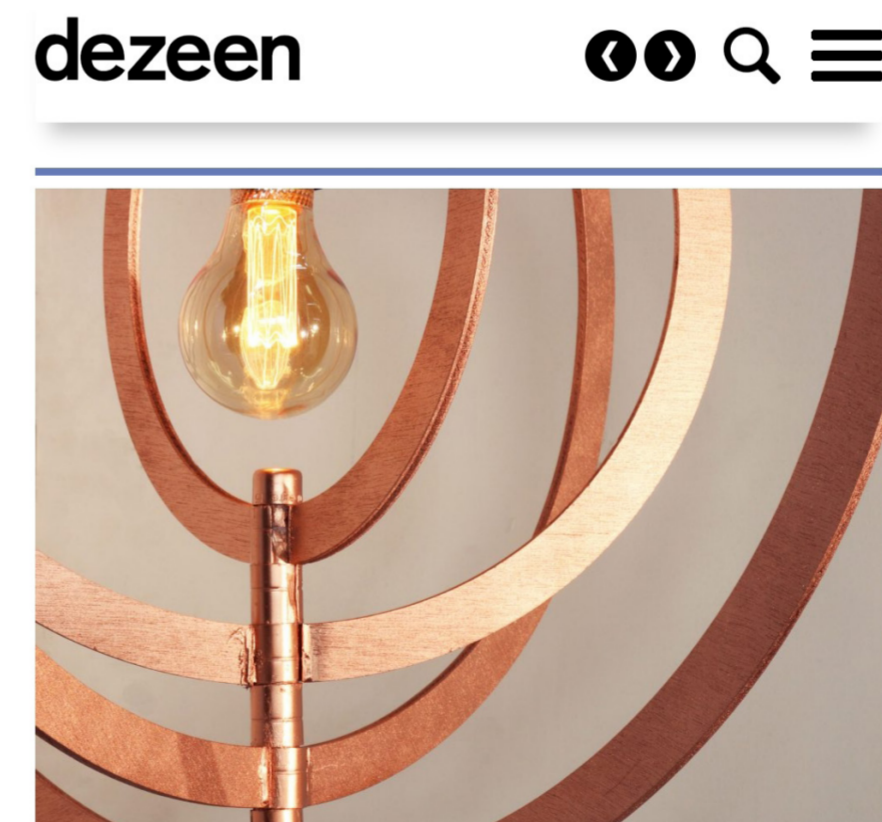
Model production process



Model production process



The outcome images



**The Movement by Diana Vysniauskaite**  
**Materials:** plywood, spray-paint, hinges and electrical components

The outcome as presented on Dezeen.com



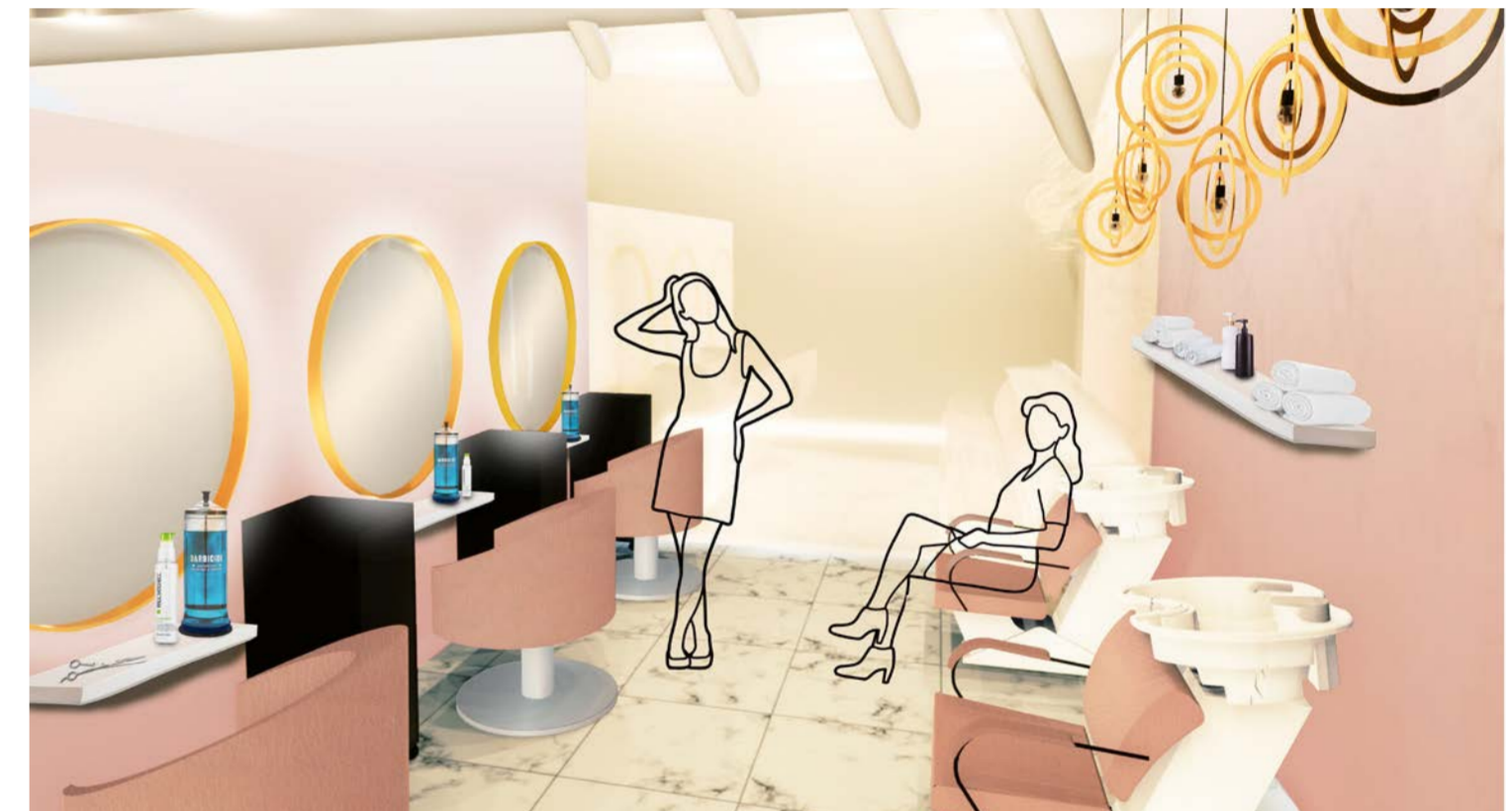
The outcome image



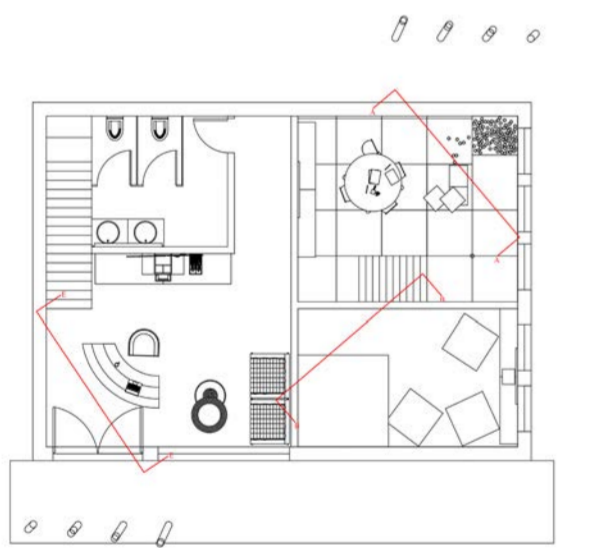
View AA: Playroom for under 5 year olds



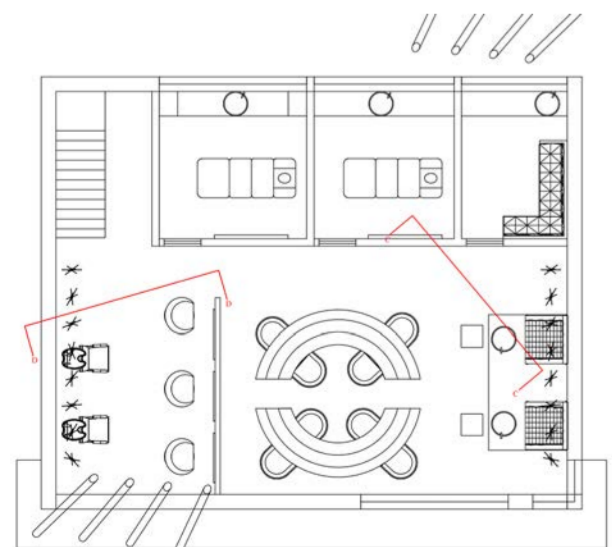
View CC: Manicure area



View DD: Hairdressing area



Ground Floor



First Floor



View BB: Playroom for over 5 year olds



View EE: Reception and waiting area