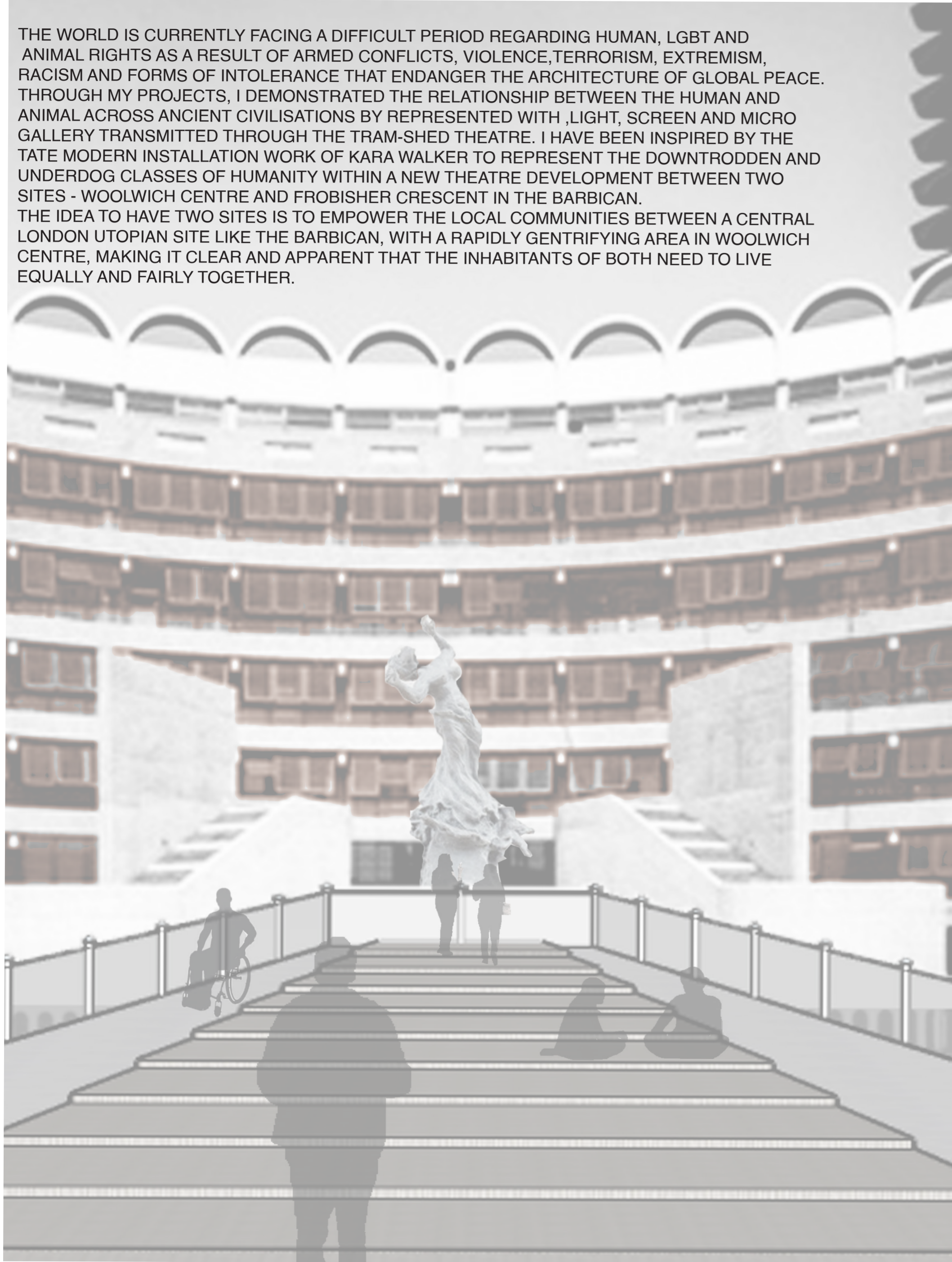


# STAGE TO LIBERATE THE OPPRESSED

THE WORLD IS CURRENTLY FACING A DIFFICULT PERIOD REGARDING HUMAN, LGBT AND ANIMAL RIGHTS AS A RESULT OF ARMED CONFLICTS, VIOLENCE, TERRORISM, EXTREMISM, RACISM AND FORMS OF INTOLERANCE THAT ENDANGER THE ARCHITECTURE OF GLOBAL PEACE. THROUGH MY PROJECTS, I DEMONSTRATED THE RELATIONSHIP BETWEEN THE HUMAN AND ANIMAL ACROSS ANCIENT CIVILISATIONS BY REPRESENTED WITH ,LIGHT, SCREEN AND MICRO GALLERY TRANSMITTED THROUGH THE TRAM-SHED THEATRE. I HAVE BEEN INSPIRED BY THE TATE MODERN INSTALLATION WORK OF KARA WALKER TO REPRESENT THE DOWNTRODDEN AND UNDERDOG CLASSES OF HUMANITY WITHIN A NEW THEATRE DEVELOPMENT BETWEEN TWO SITES - WOOLWICH CENTRE AND FROBISHER CRESCENT IN THE BARBICAN. THE IDEA TO HAVE TWO SITES IS TO EMPOWER THE LOCAL COMMUNITIES BETWEEN A CENTRAL LONDON UTOPIAN SITE LIKE THE BARBICAN, WITH A RAPIDLY GENTRIFYING AREA IN WOOLWICH CENTRE, MAKING IT CLEAR AND APPARENT THAT THE INHABITANTS OF BOTH NEED TO LIVE EQUALLY AND FAIRLY TOGETHER.



# STAGE TO LIBERATE THE OPPRESSED



A VIEW OF A SUBTLETY'S SCULPTURE FACING THE NATION GALLERY



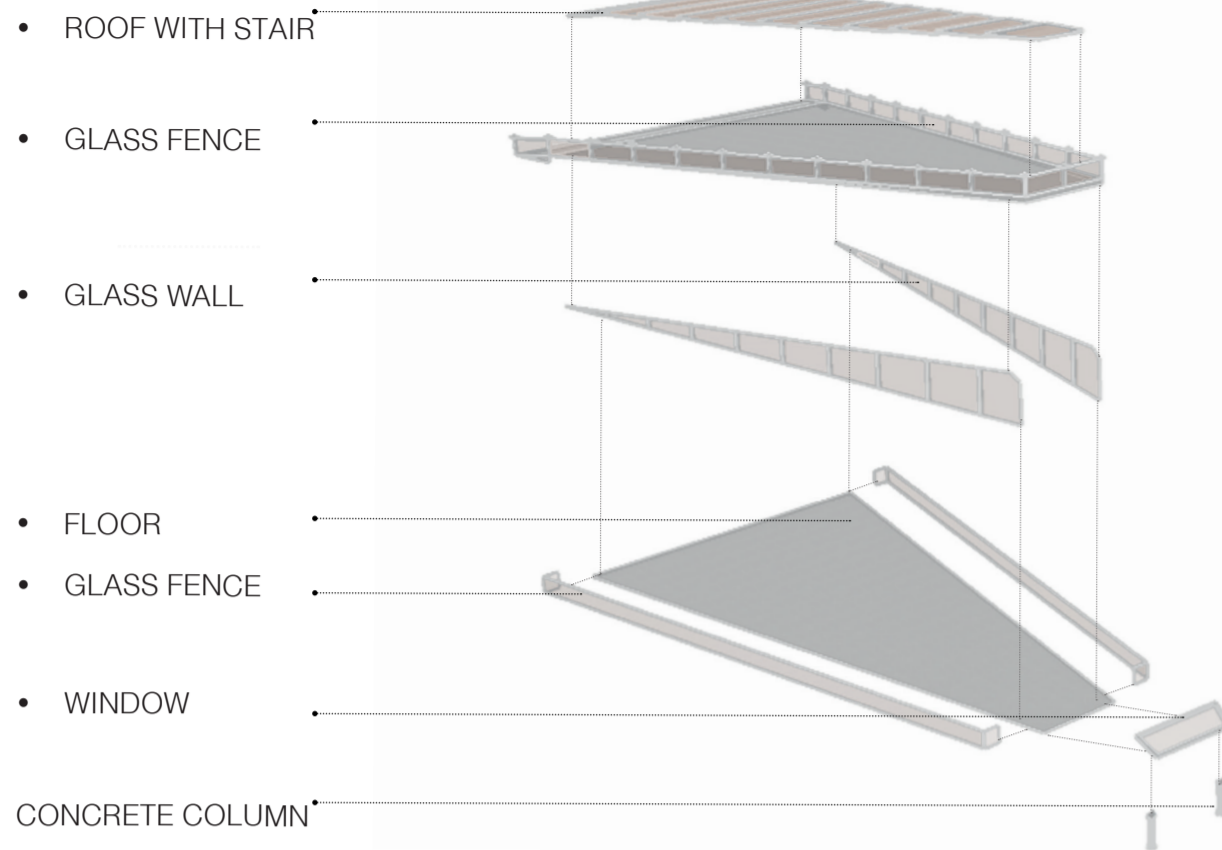
A VIEW OF THE SECTION MODEL SHOWING THE CONCEPT OF THE BEHIND THE SCENES



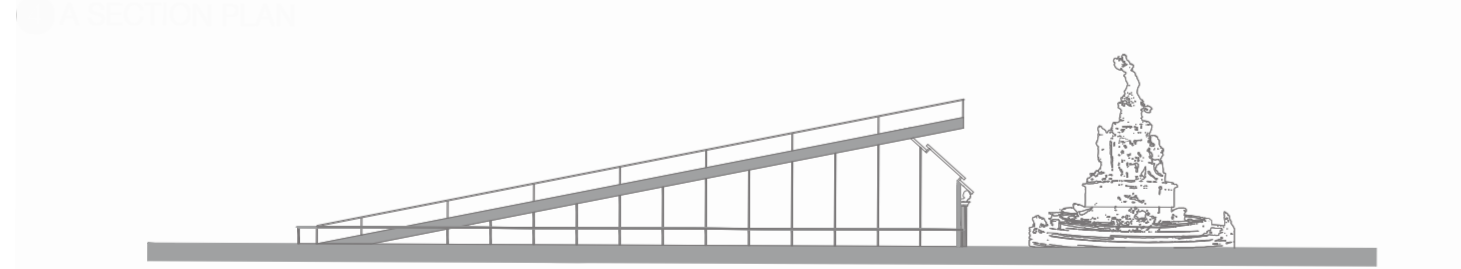
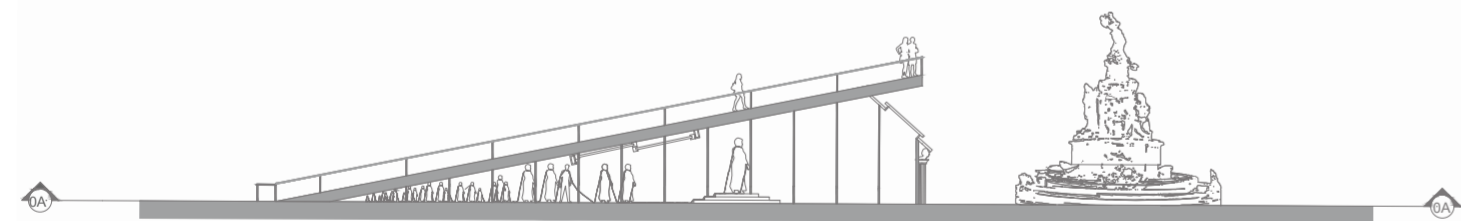
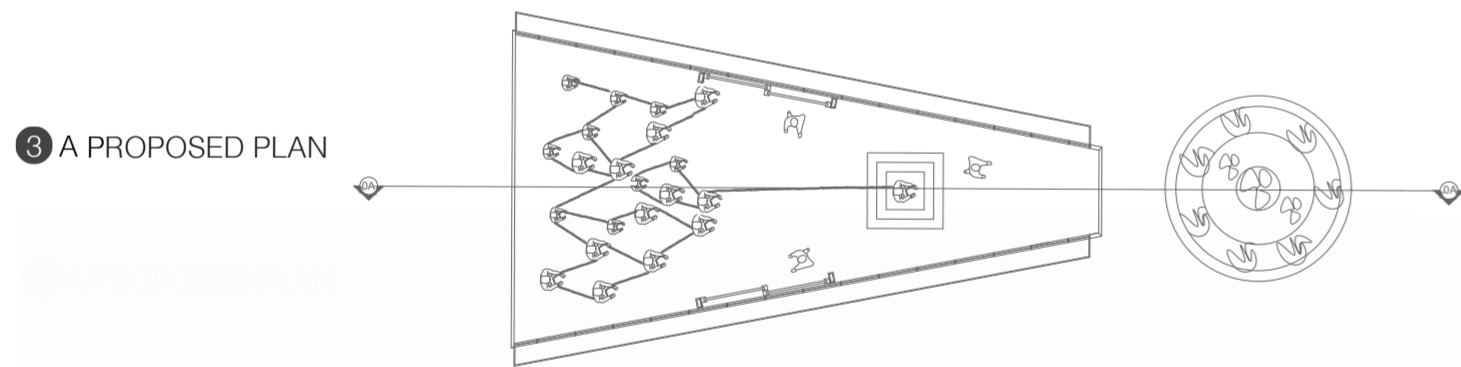
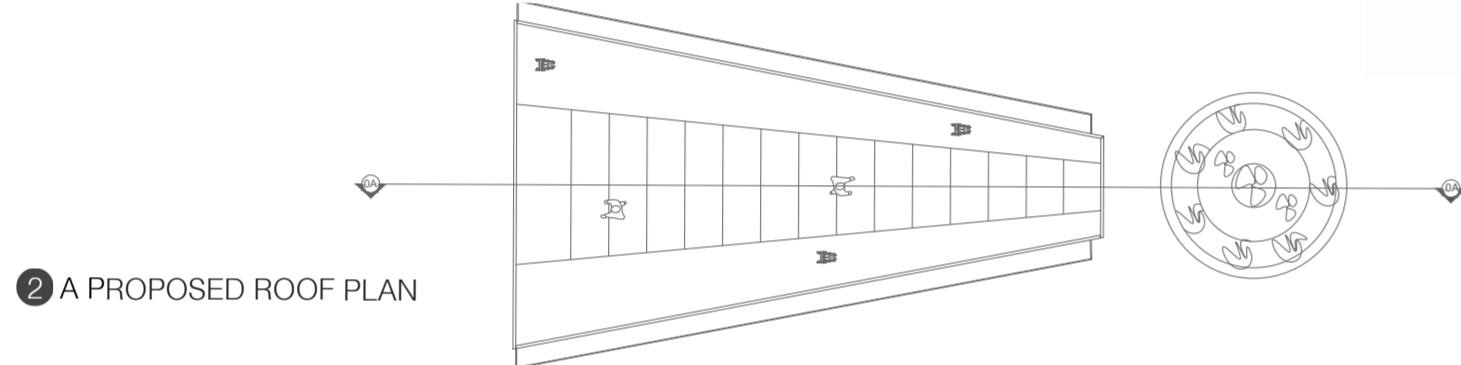
A VIEW OF THE FRONT ELEVATION OF THE SECTION MODEL DESIGN

THE NATION'S GALLERY DEPICTING A FORGOTTEN NATION STANDING BEHIND THE SCENES THAT HELPED ADVANCE OF OUR CIVILISATIONS AND EXPLANATION THE CHANGING REALITIES IN WHICH WE LIVE, THE DESIGN OF THE GALLERY REPRESENTS THE SLAVES THAT WORK, BUT NO MATTER HOW ADVANCED AND EARN MONEY, THEY REMAIN TIED TO THE BASEMENT WITH CHAINS, WHILE THE OTHERS ARE MOVING FORWARD, WHICH REPRESENTS THE ROOF. I DECIDED TO CONNECT THE DESIGN OF THE GALLERY INTO THE THEATRE SO I SHOWED IT AS A RAMP STAIR AND BEHIND THE SCENE REPRESENT THE FORGOTTEN NATION (SLAVES), I HAVE ADDED THE CUP LAMP AND THE SCREEN CAT TO THE THEATRE TO BRING CIVILIZATION WITH THE VINTAGE, IT WILL HELP ACHIEVE VISUAL BALANCE IN THE SPACE.

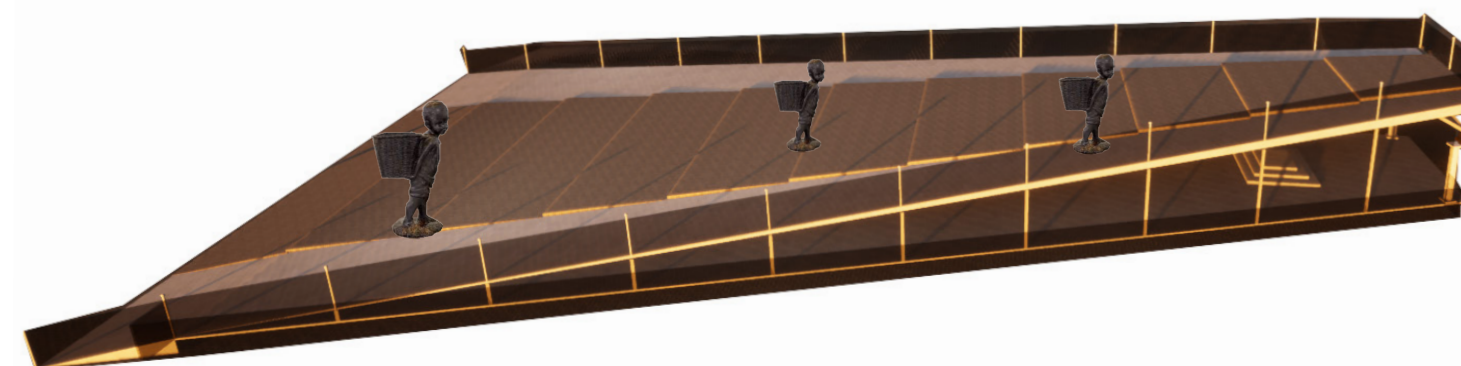
# THE NATION'S GALLERY



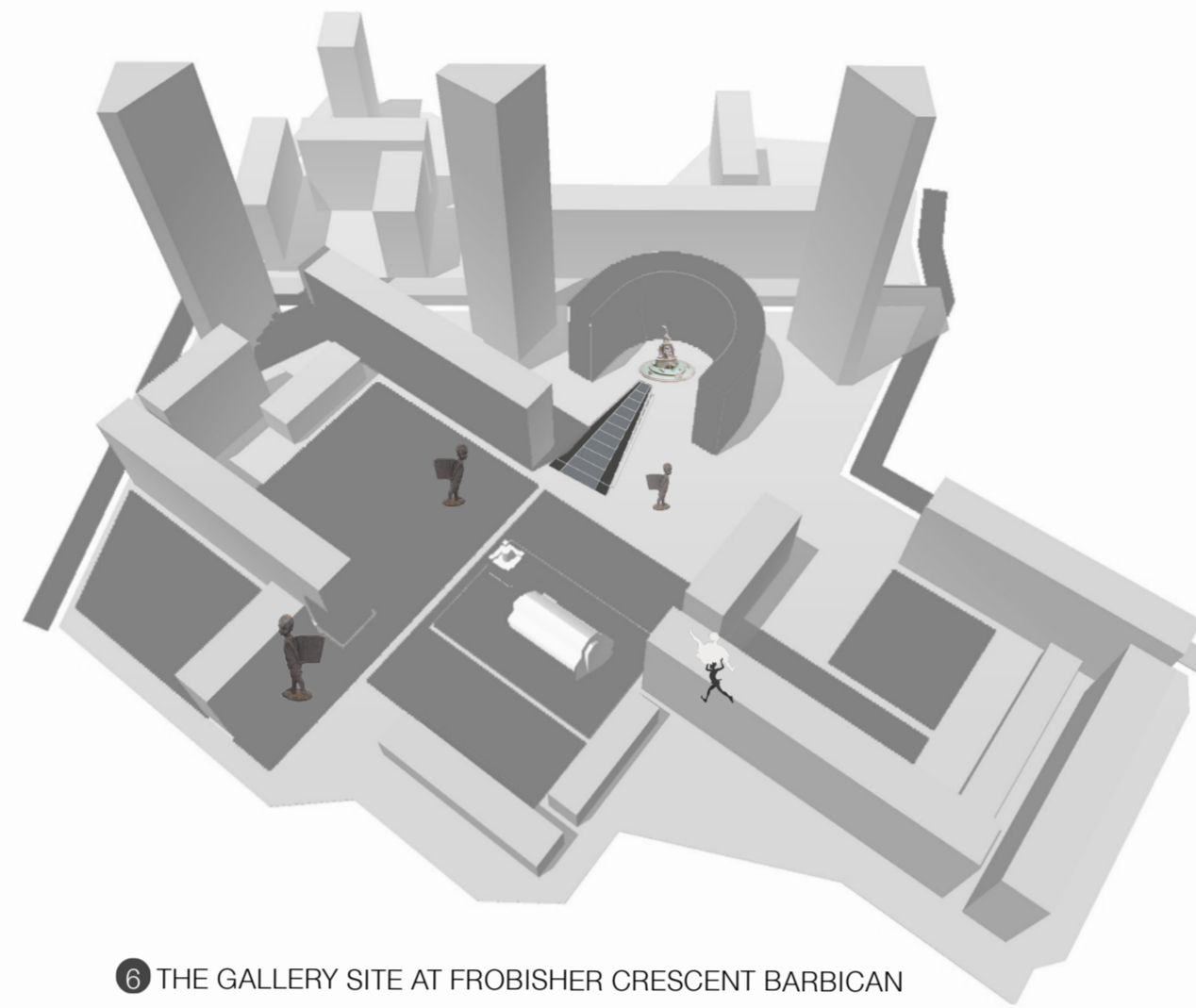
1 AN AXONOMETRIC DRAWING



4 A SECTION OF THE GALLERY



5 3D MODEL OF THE GALLERY



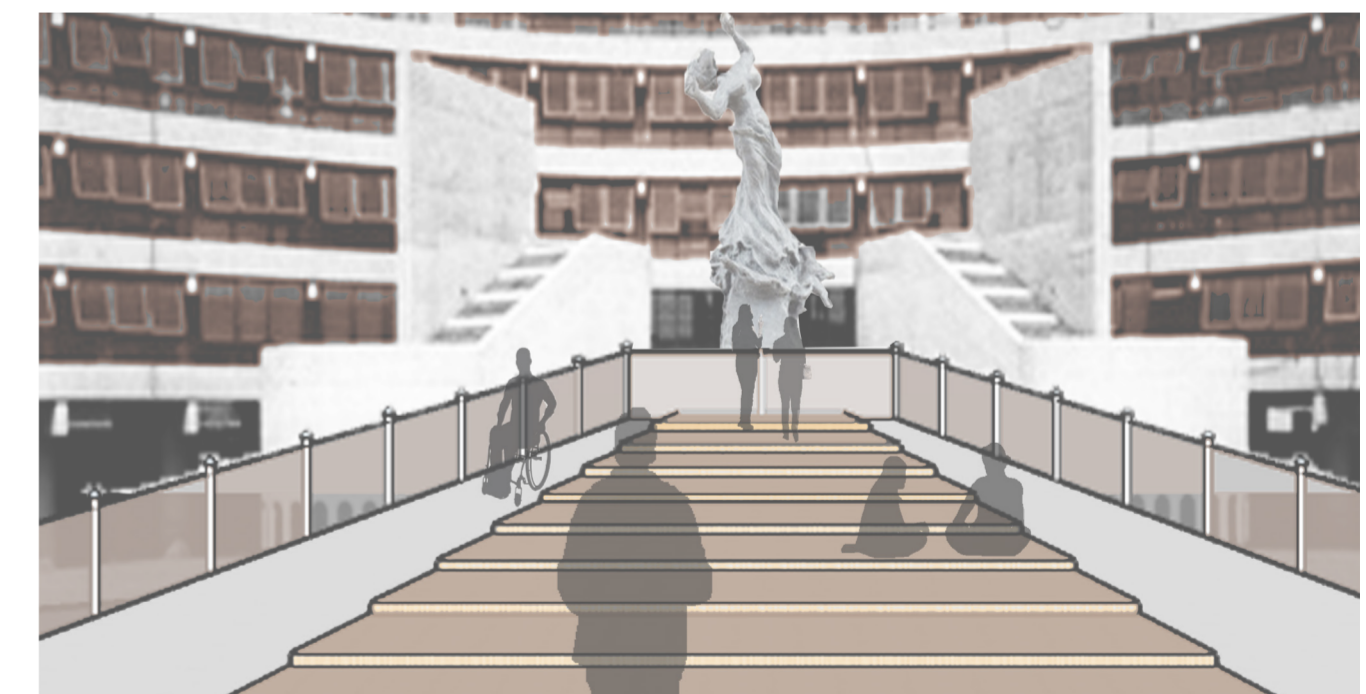
7 FONS AMERICANUS BY KARA WALKER



8 A VIEW FROM THE RIGHT SIDE OF THE GALLERY



9 A VIEW FROM INSIDE THE GALLERY SHOWING KARA'S SCULPTURE ABOUT THE SLAVES

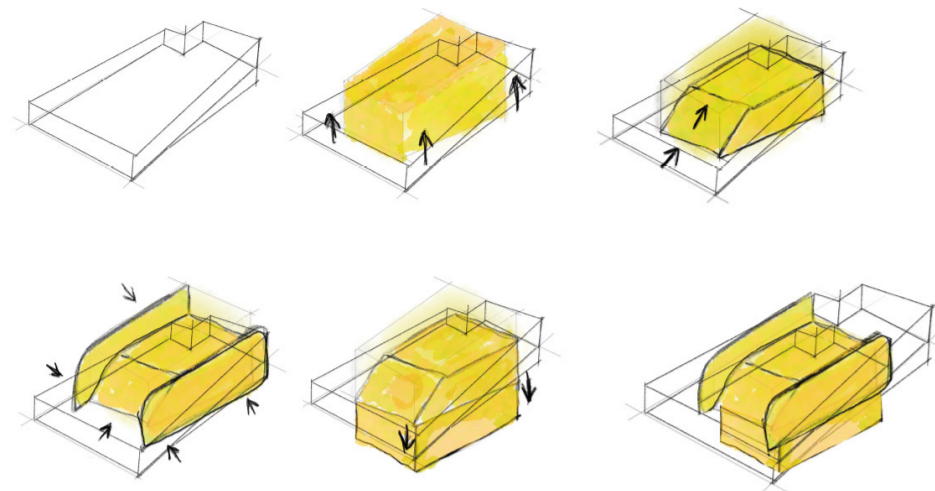


10 A VIEW FROM THE GALLERY'S ROOF TOWARD THE SCULPTURE

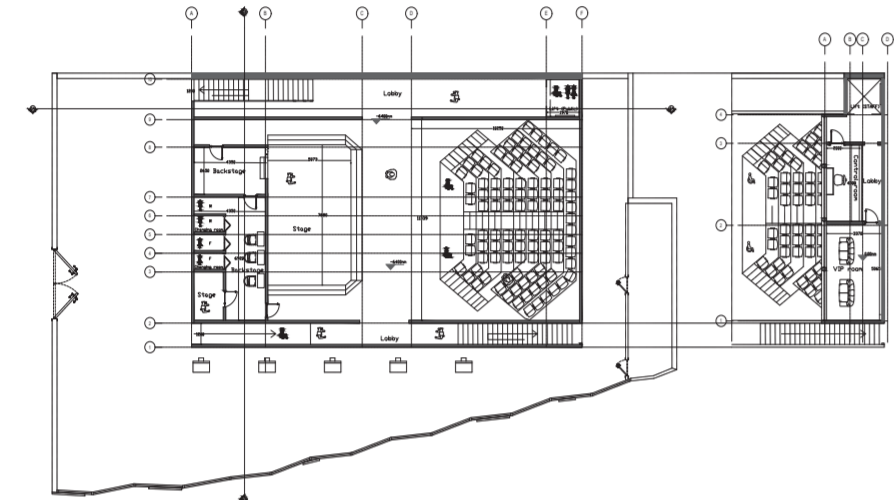


11 A VIEW FROM INSIDE THE GALLERY SHOWING KARA'S SCULPTURE

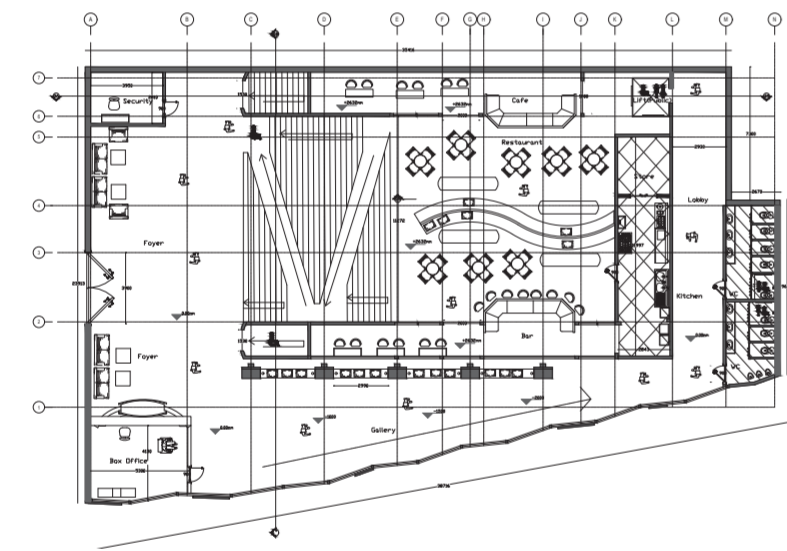
# DINNER AND SHOW THROUGH THE GALLERY



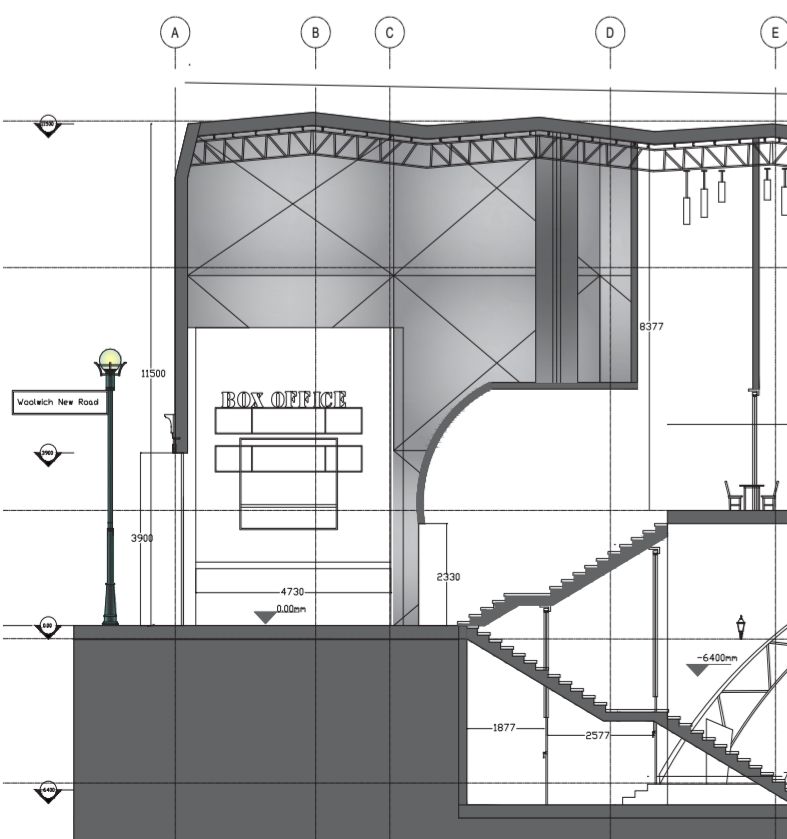
1 DEVELOPMENT OF THE BUILDING SHAPE ADDING RAMP STAIR AND TRAM SHAPES INSPIRED BY THE STORY OF TRAM CRASH AT WOOLWICH



2 PROPOSED -BASEMENT LEVEL PLAN

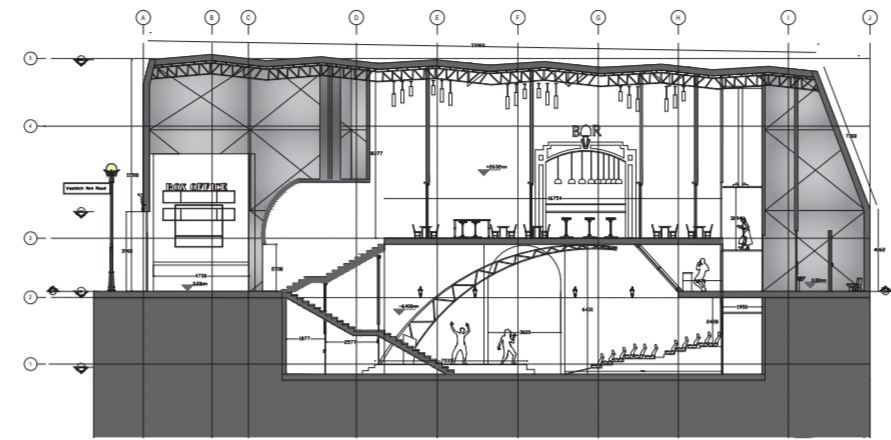


3 PROPOSED -GROUND LEVEL PLAN

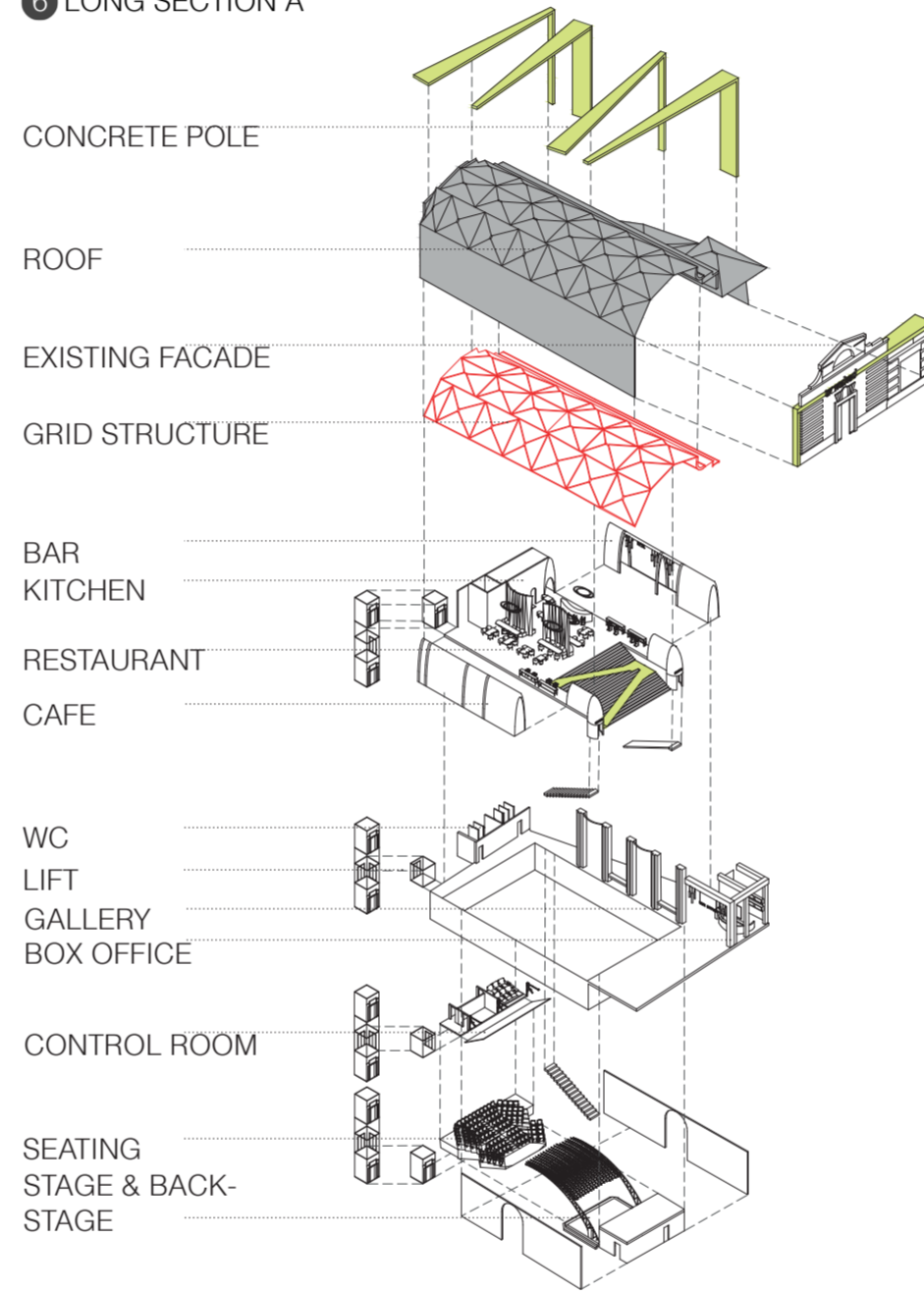


4 DETAILS OF RAMP STAIR PART OF SECTION

5 A SECTIONAL MODEL I USED CONCRETE BASE POURED TO REPRESENT THE TERRACED STAIRS TO CREATE A NEW INDOOR THEATRE ATRIUM SPACE'



6 LONG SECTION A



7 AXONOMETRIC



8 A SKETCH OF FON'S AMERICANUS



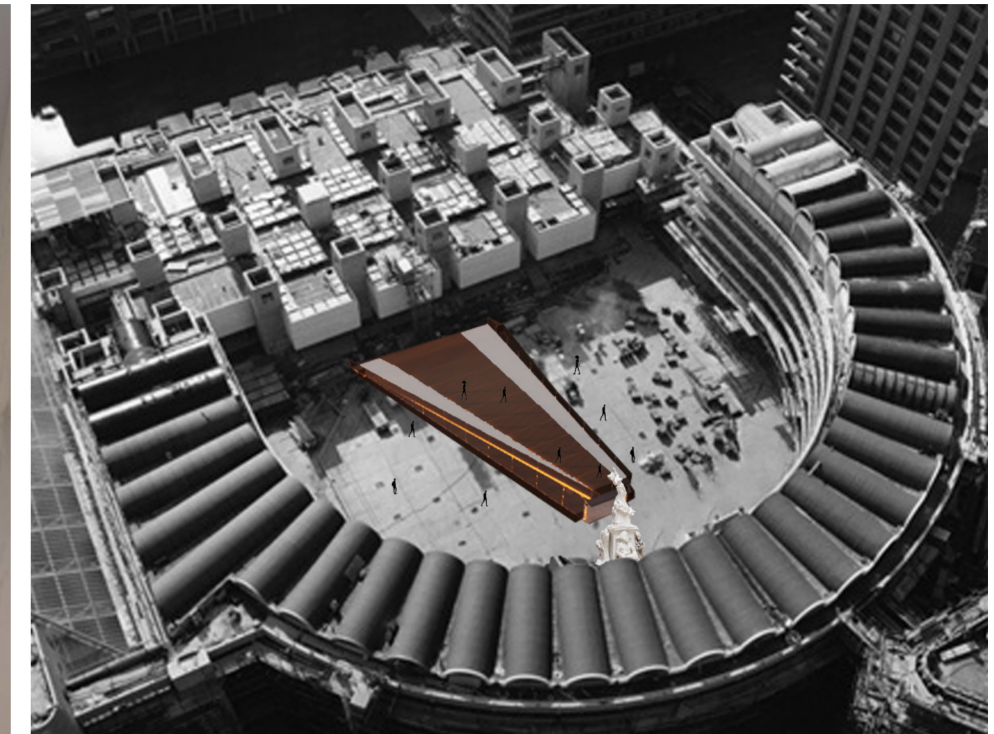
9 A VIEW FROM THE RAMP STAIR AND SCULPTURE BEHIND IT SIMULATES THE MICRO GALLERY



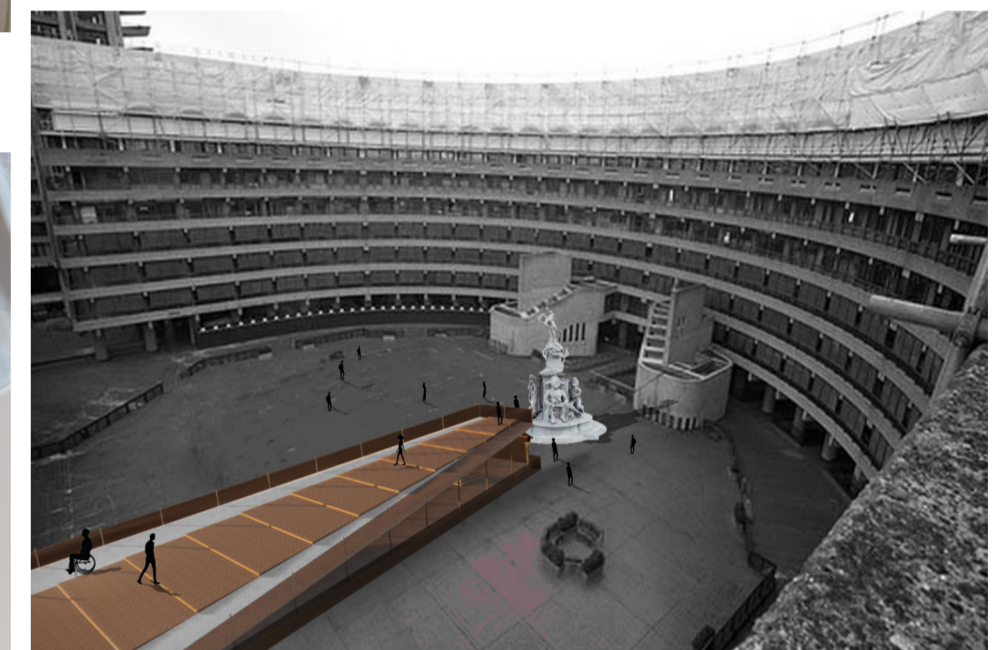
10 A VIEW FROM THE GALLERY



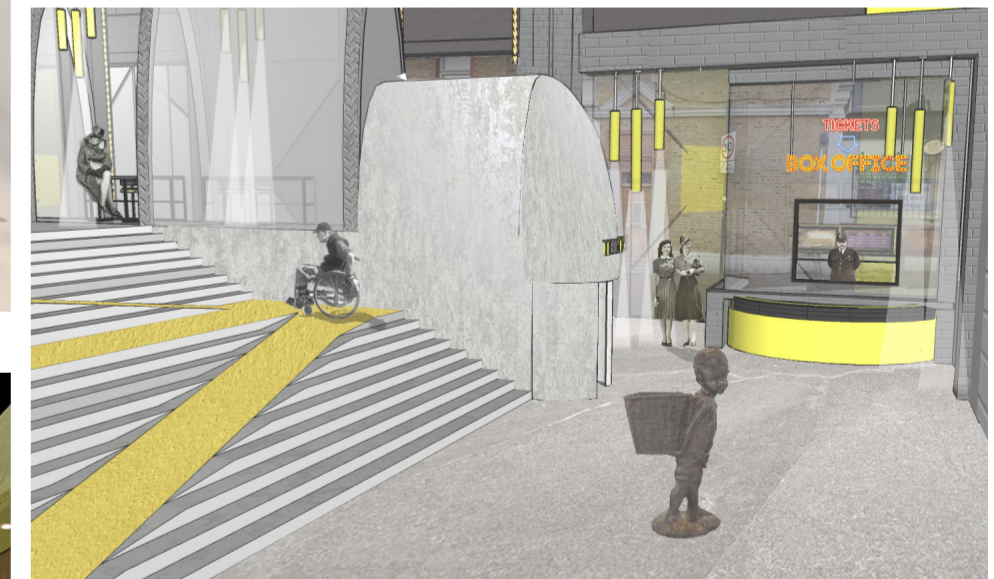
11 A VIEW OF THE MODEL SECTION FROM THE BOX OFFICE WITH LAMP



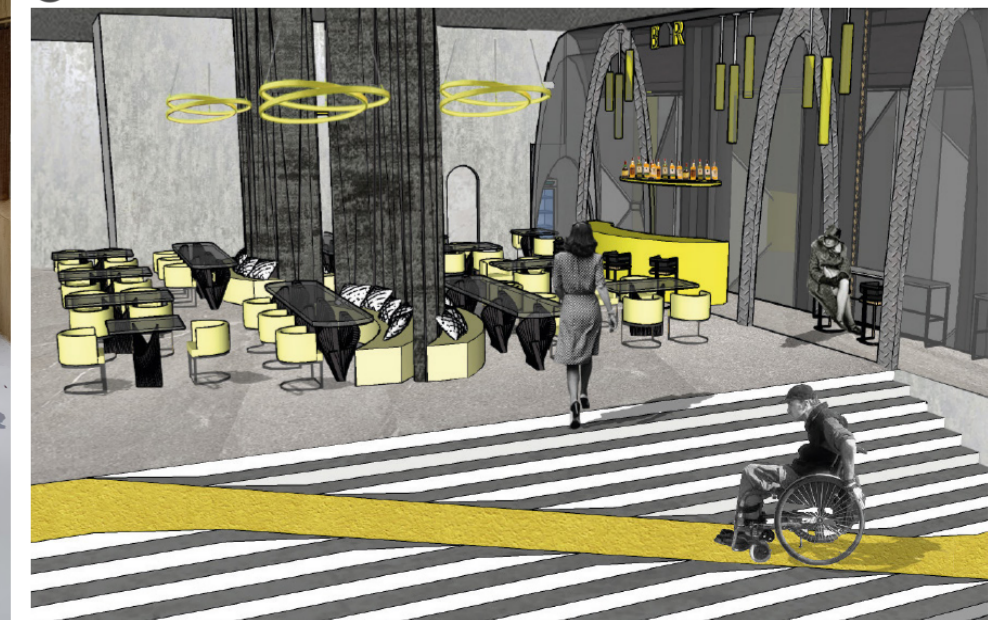
12 THE GALLERY AT FROBISHER CRESCENT BARBICAN



13 A VIEW OF THE MICRO GALLERY FACING FON'S AMERICANUS SCULPTURE

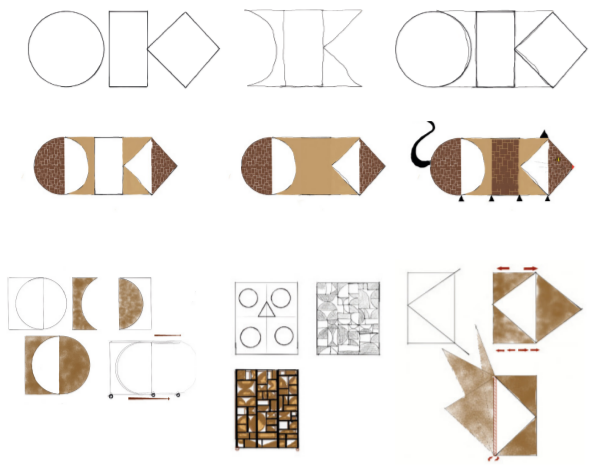


14 A VIEW OF THE BOX OFFICE

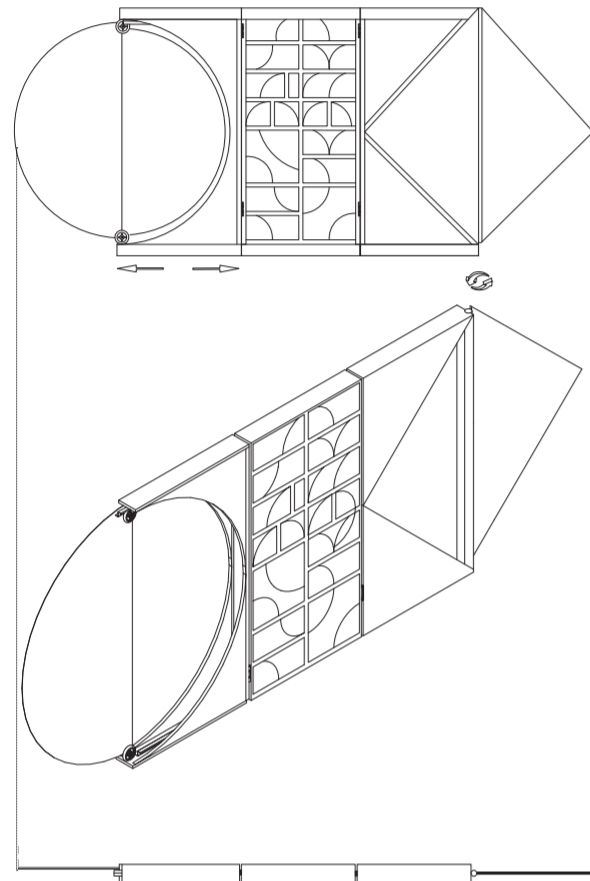


15 VIEW FROM THE SEATING AND CONTROL ROOM

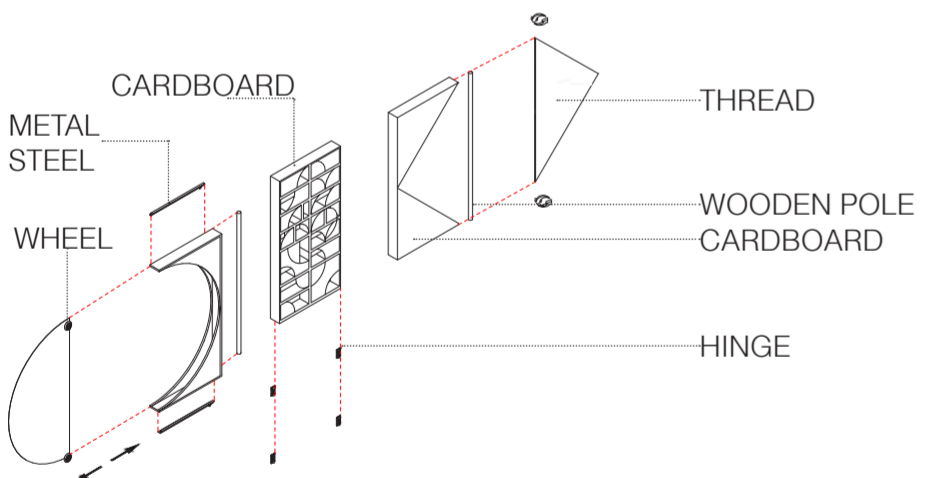
# CAT SCREEN UNDER THE LIGHT



1 SKETCHES OF USING GEOMETRIC SHAPES UNTIL GET THE FINAL SHAPE OF A CAT



2 CAD DRAWINGS: PLAN, ELEVATION AND AXONOMETRIC



3 AN EXPLODED AXONOMETRIC

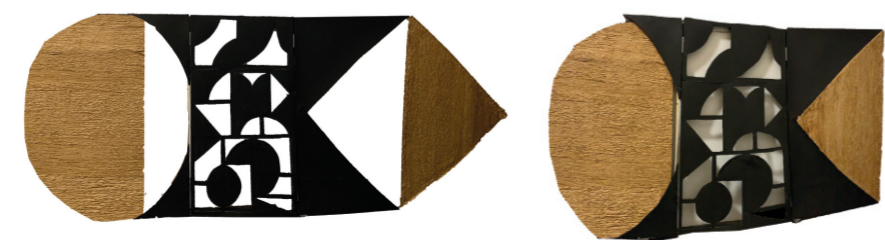


4 THE DETAILS OF THE SCREEN

CREATING A SCREEN DIVIDER FOR A CAT INSPIRED BY CAT SHAPES USING GEOMETRIC MOVEMENT LIKE CONSTRUCTIVISM TO DESCRIBE THE FORM OF THE CREATURE, WITH INTEGRATE ERITREA CULTURE FOR PET CAGE. THIS DESIGN WILL DECORATE THE SPACE OF THE BOX OFFICE AND THE STAGE AND IT WILL REPRESENT A LOGO OF HANDMADE DESIGN.



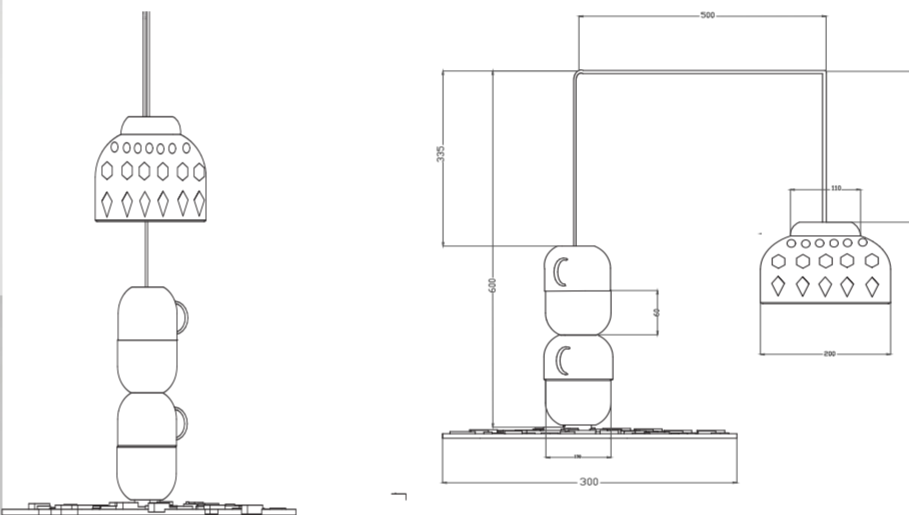
5 PHOTOS OF 3D MODEL SHOW IN ROOM AND OFFICE



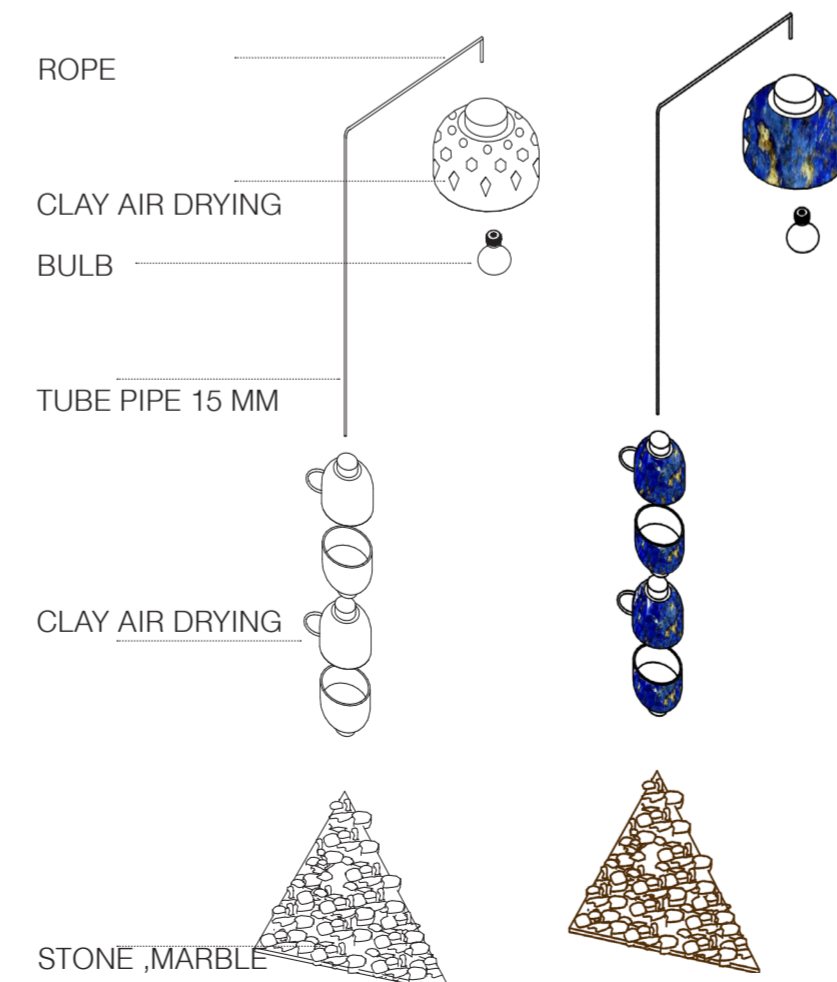
6 THE OUTCOME OF THE CAT SCREEN SHOWS WHEN IT IS CLOSED AND OPENED



1 SKETCHES OF CONCEPT WITH DEVELOPMENT, CREATING A LAMP DESIGN THAT INSPIRED BY A SUBTLETY'S SCULPTURE WHICH IS (A CHILD HOLDING A SAUCEPAN) THIS DESIGN WILL ILLUMINATE THE SPACE OF THE GALLERY AND THE THEATRE AND IT REPRESENTS A UNIQUE LOGO OF THE ORGANIC MATERIALS



2 ELEVATION



3 AN EXPLODED AXONOMETRIC



4 THE VIEW OF CAT SCREEN INSIDE HOUSE, OFFICE AND NURSERY