

MY OWN PRIVATE UTOPIA

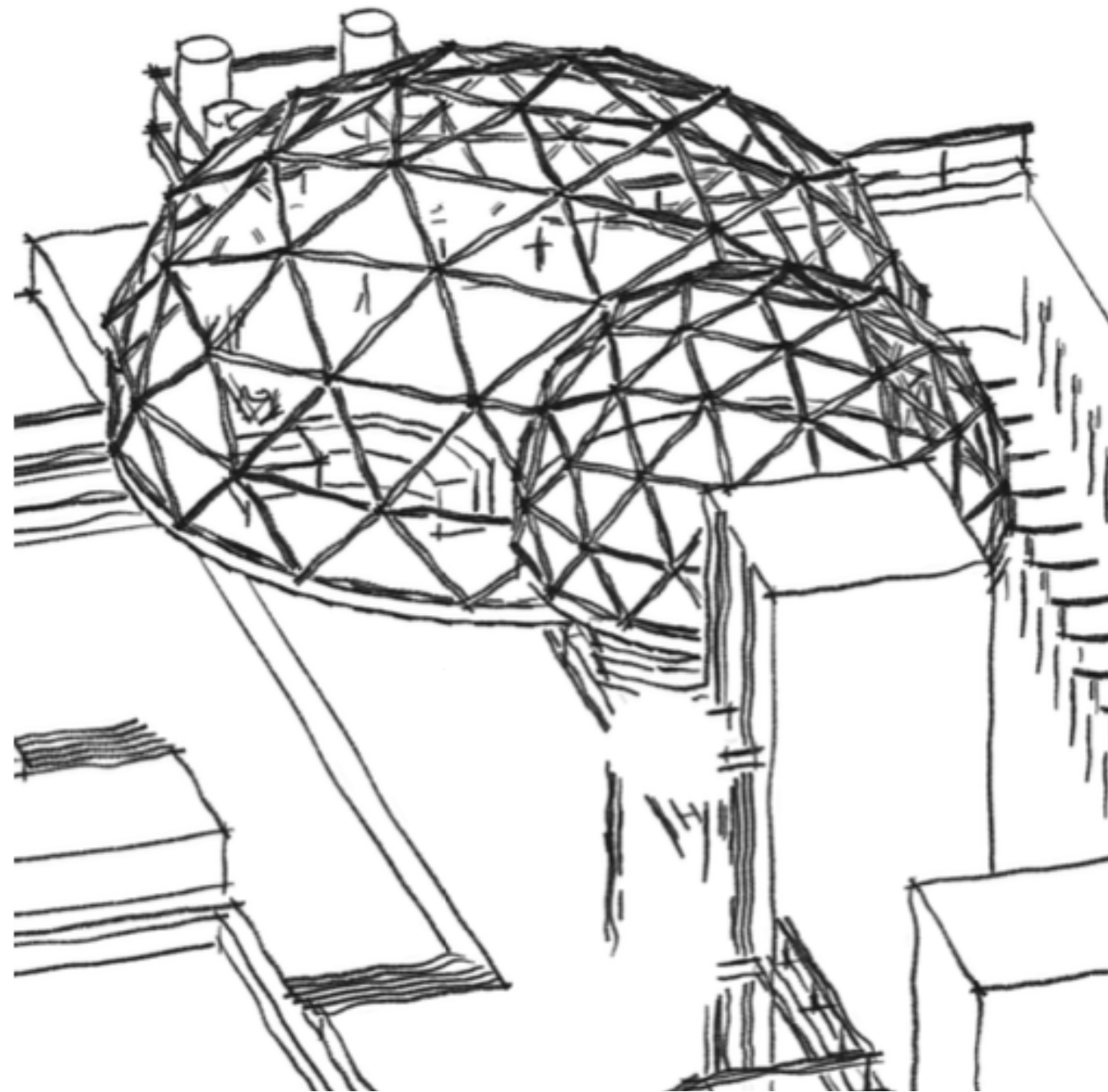
Mahfooz Abdalla

We had to design an intervention in the Barbican conservatory that could adapt to be used for different social functions e.g event space e.g. wedding reception, a performance space, a gallery, gift shop. Our inserted proposal can be whatever shape, height and material we see fit but we must be able to explain how it relates to the strong architecture of the Barbican.

This project is about celebrating the plant-life of the Barbican and capitalising the need for the public to take a piece of the Barbican conservatory home with them - by simply purchasing a piece of planting from my newly proposed shop.

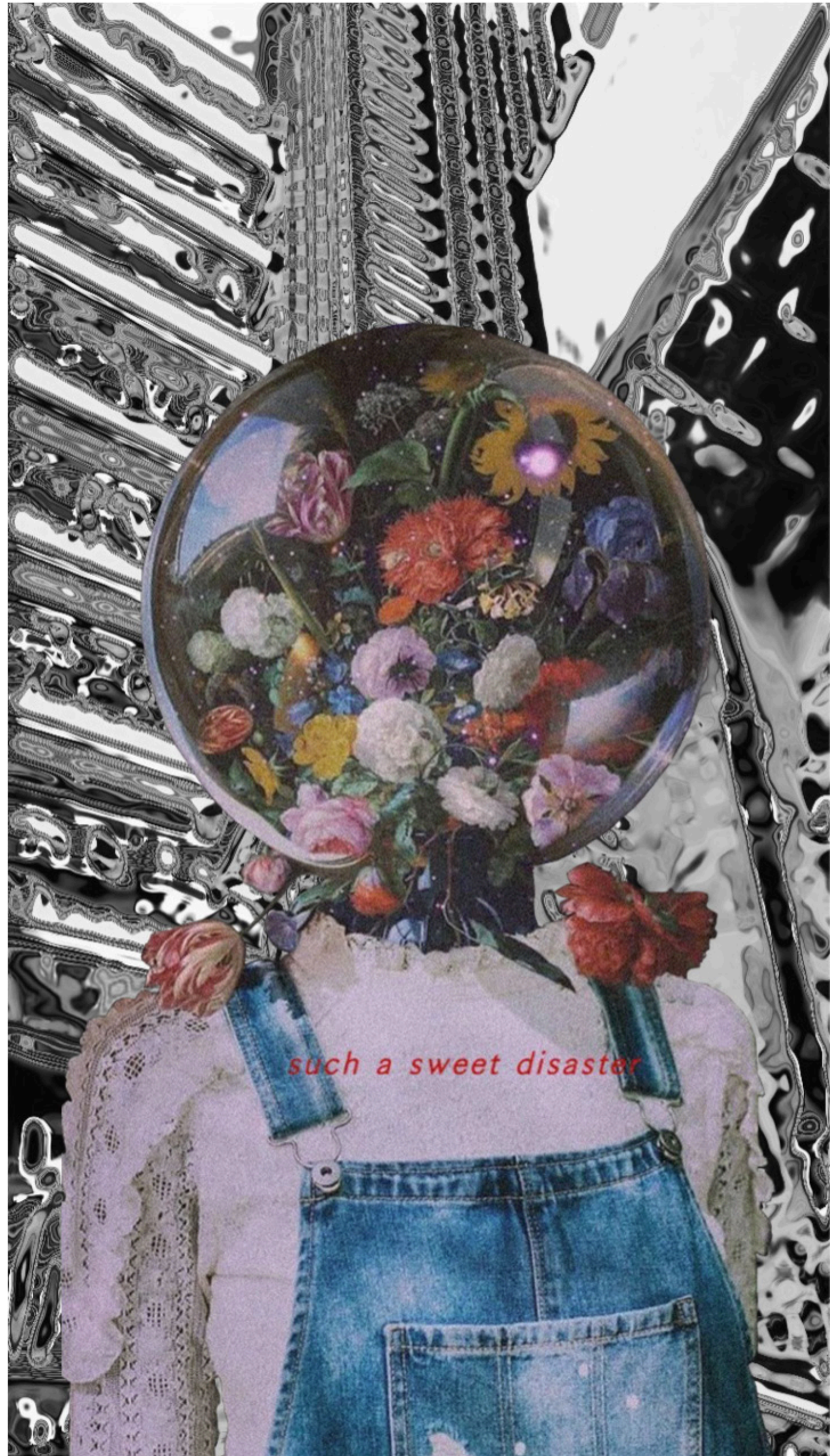
I've decided to create a new enclosure based on the geometry of a 'bio dome' or Victorian 'Terrarium' that creates a new climatic condition to allow the growth of new exotic plant types and also creates a fun shaped environment for visitors to enjoy.

This geodesic dome - which was created to maximise the ability to create a organic domed structure using conventional straight lines.

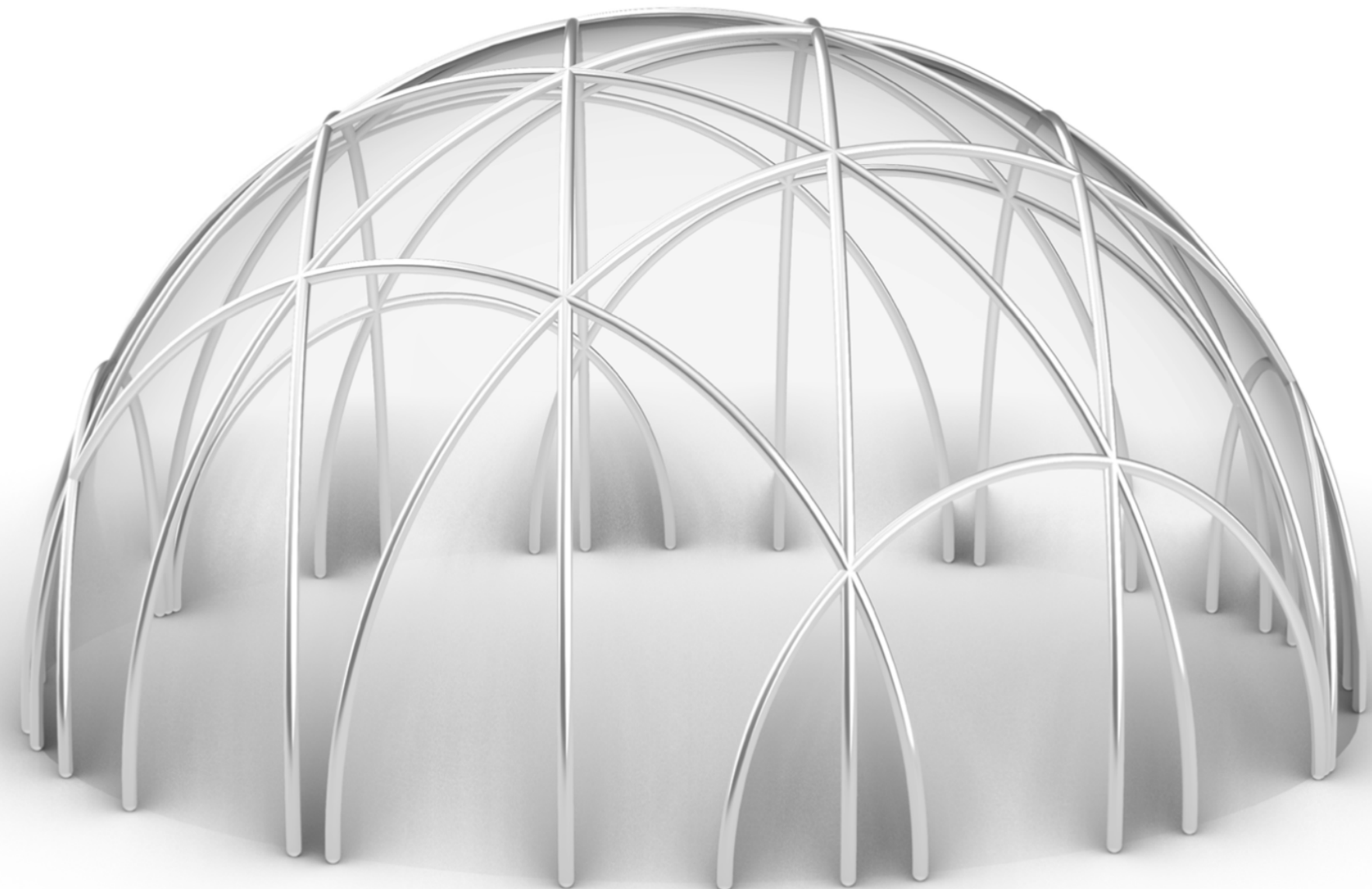
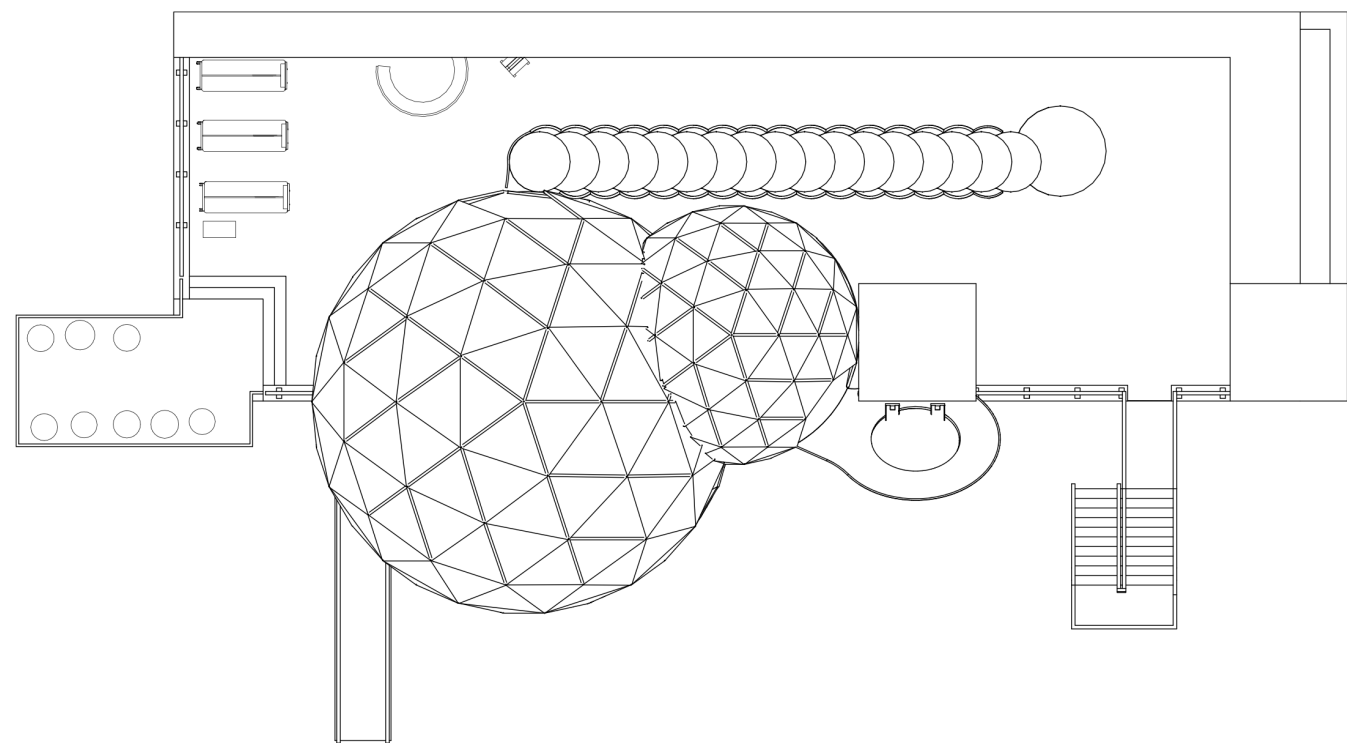
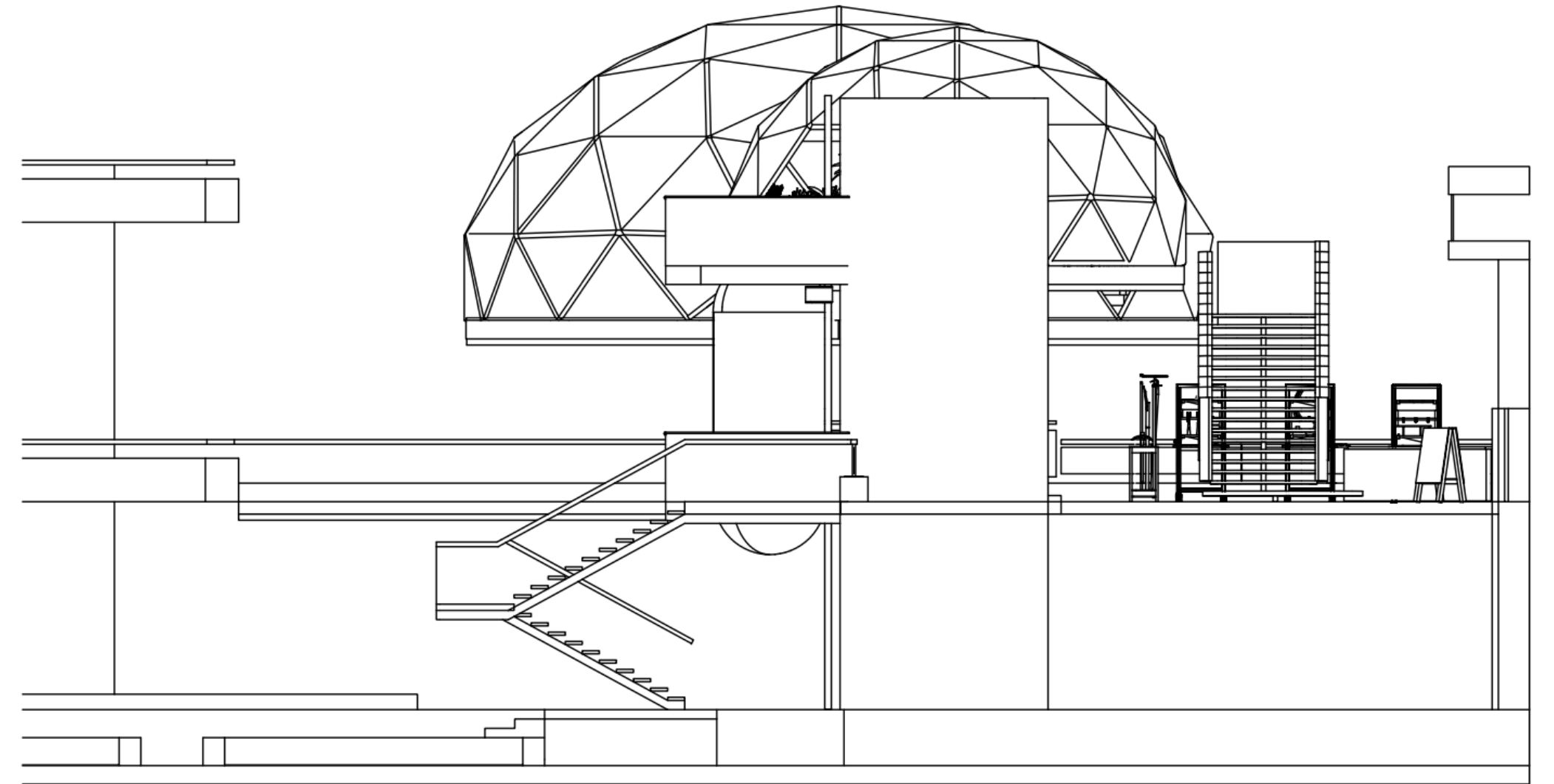
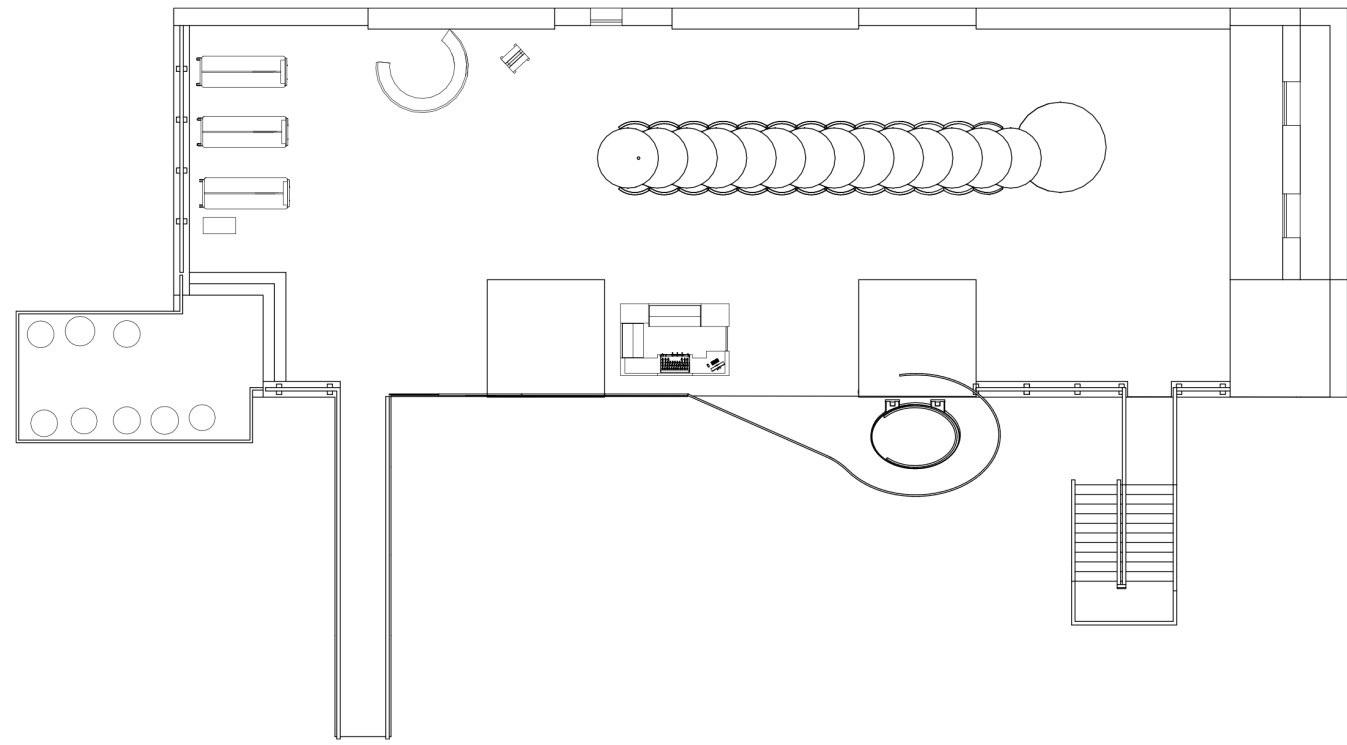


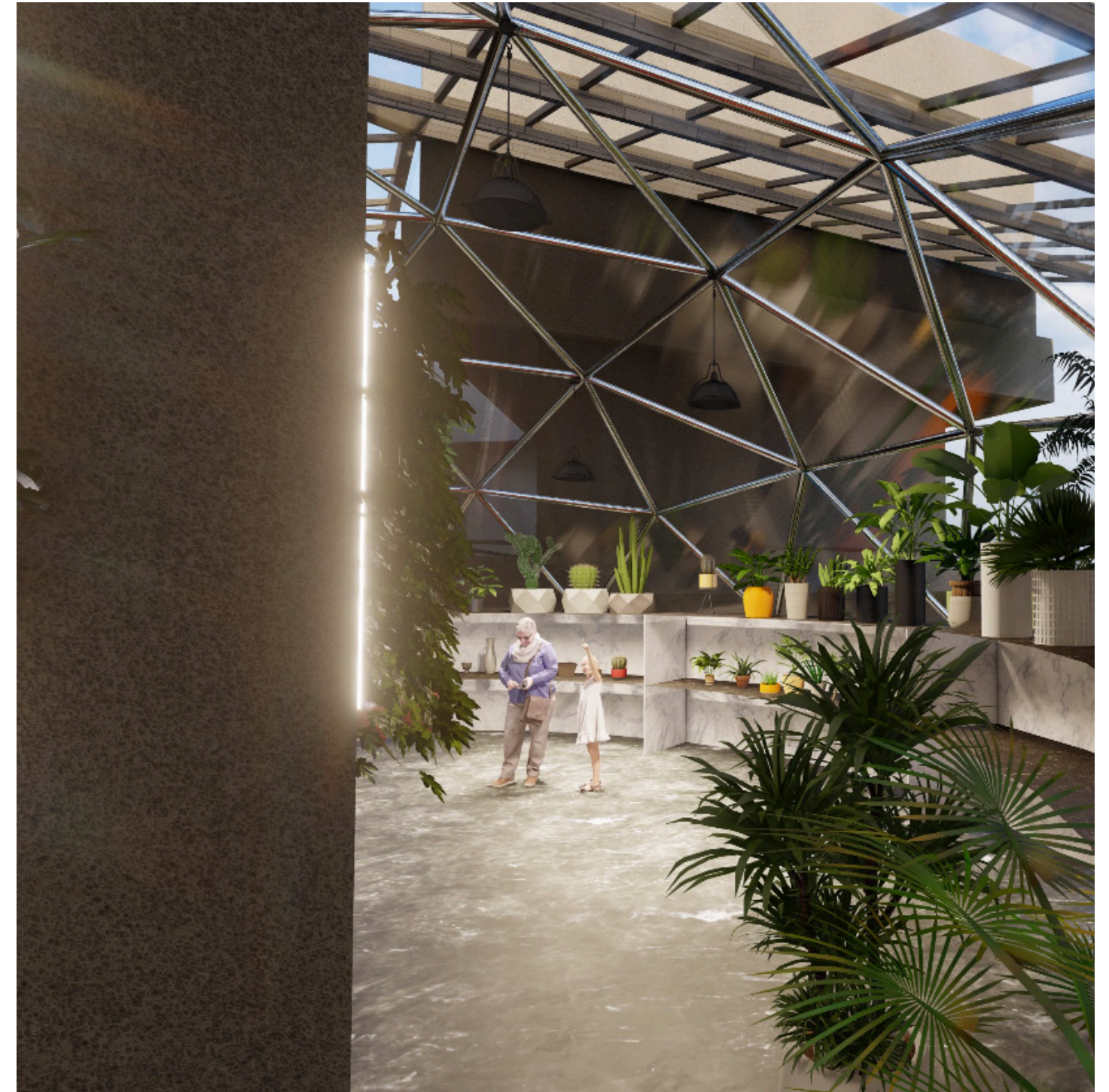
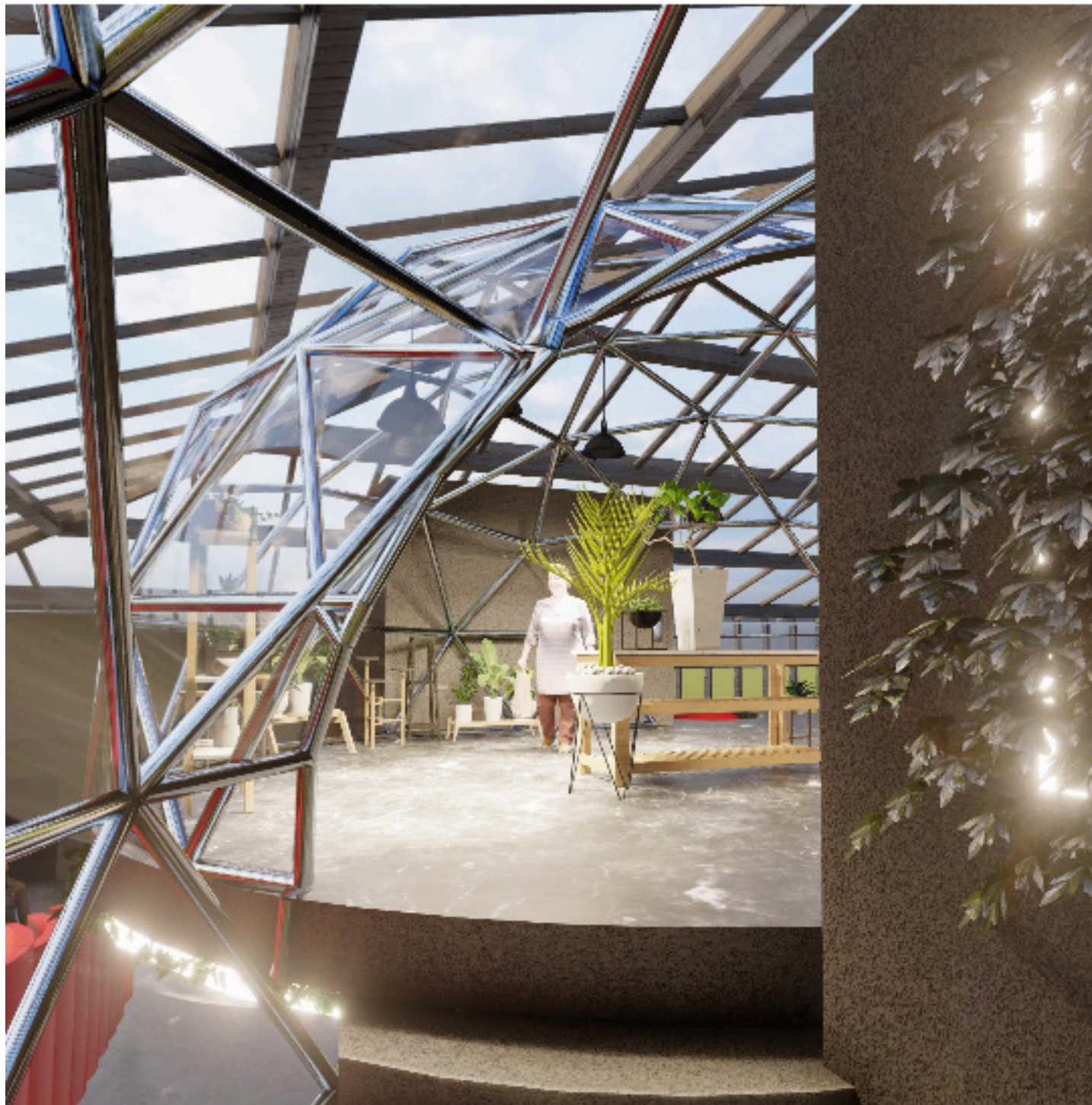
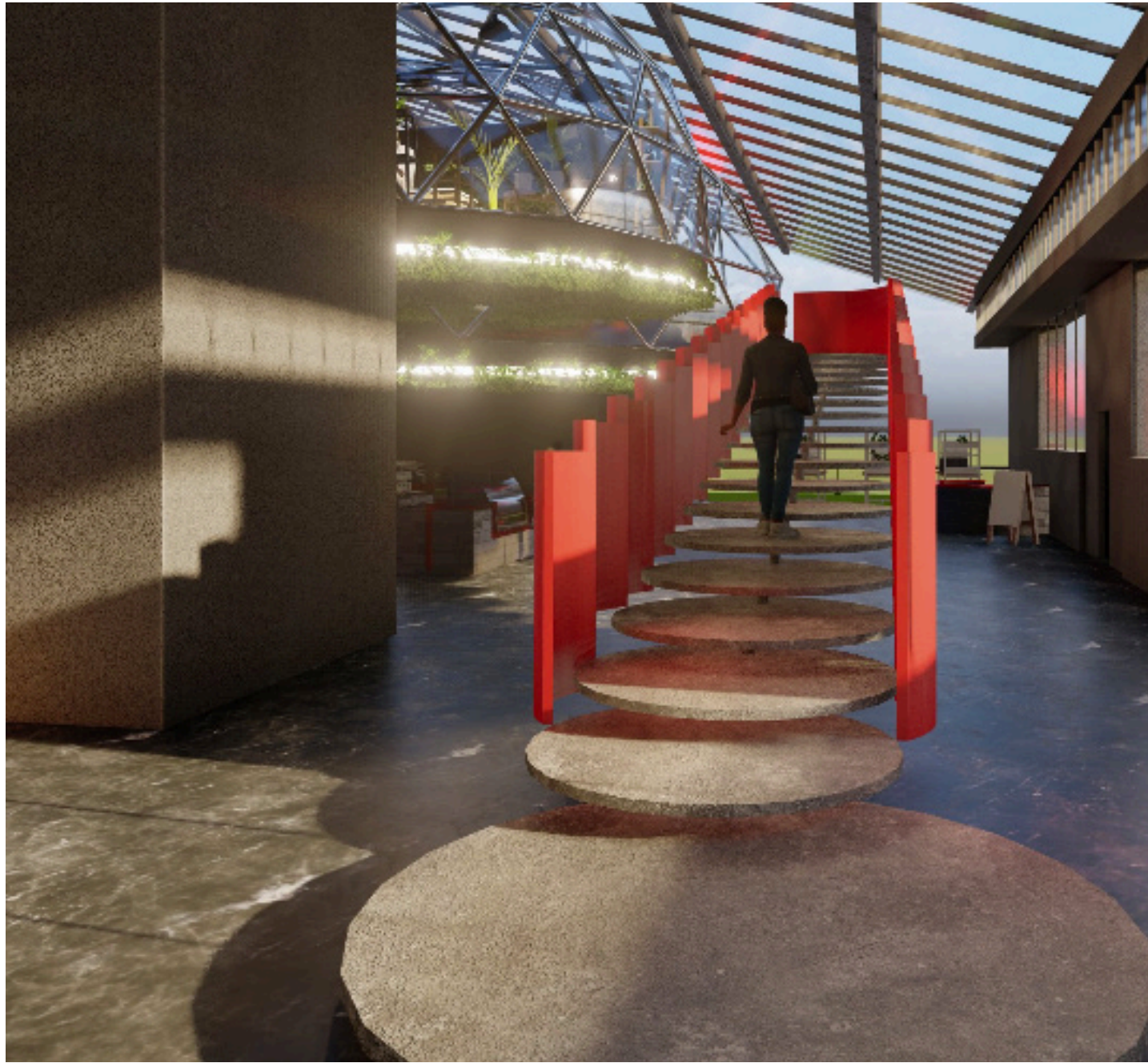


Brutalist Beauty



Junglemania





Visuals

Material Palette

