

# Dinner & A Show

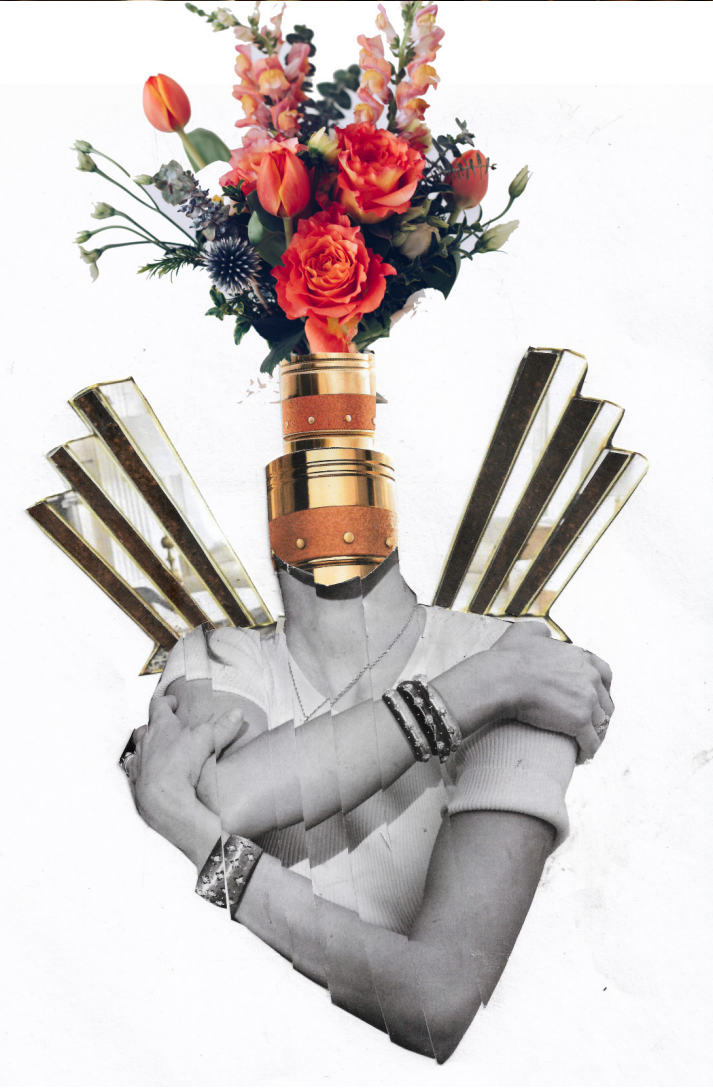
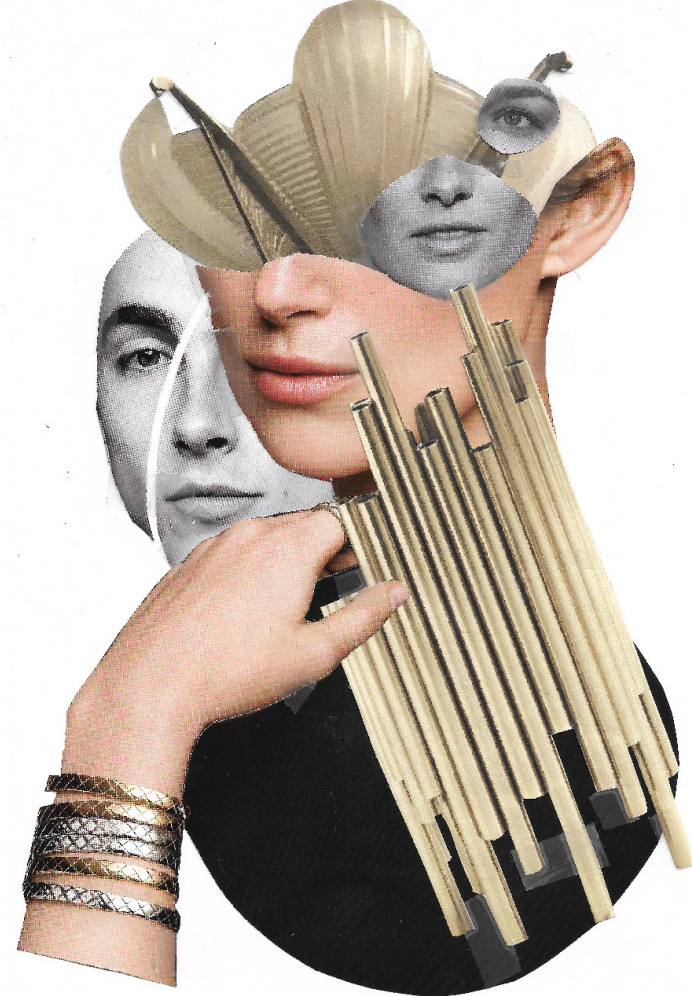
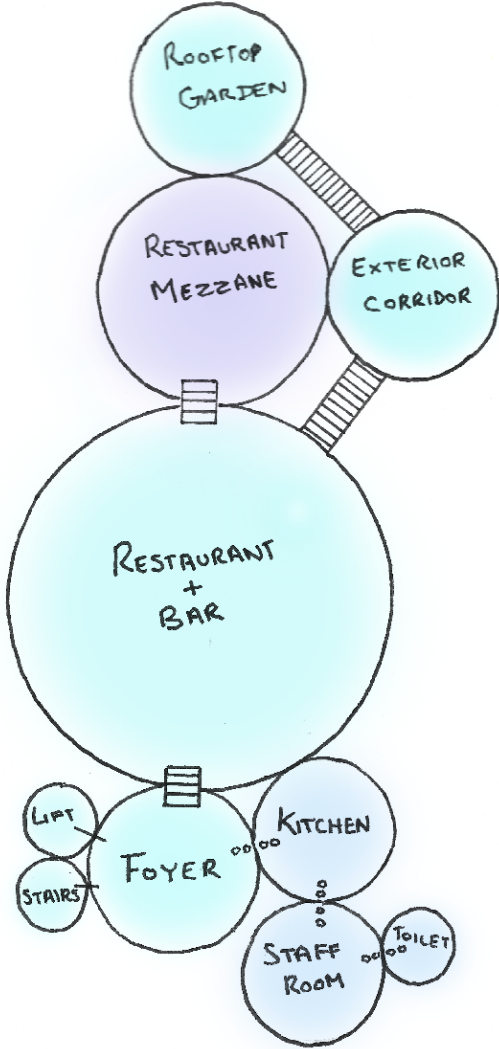
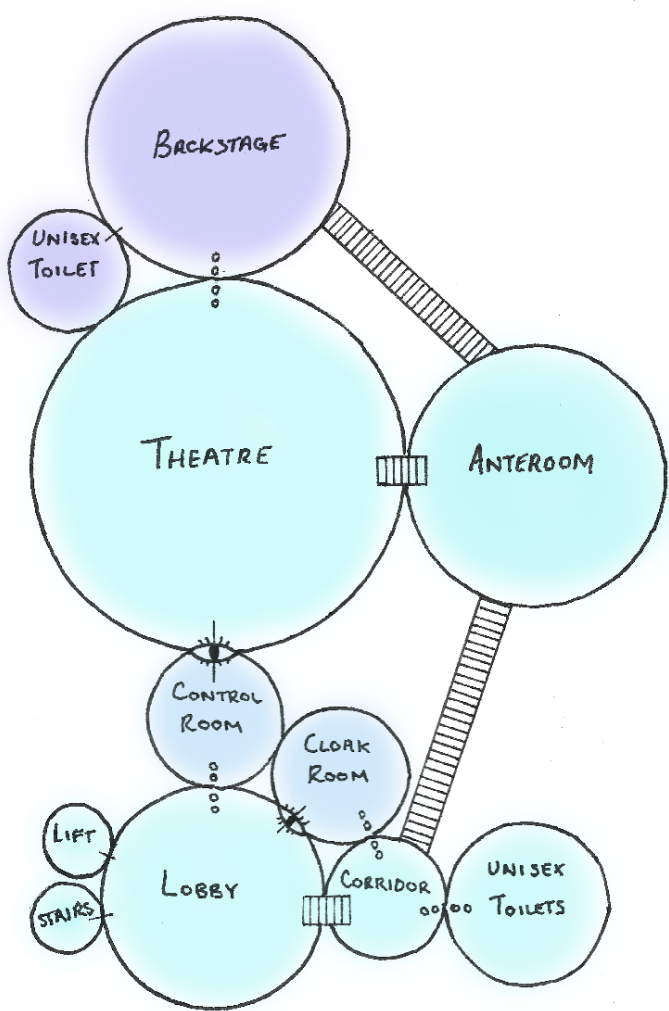
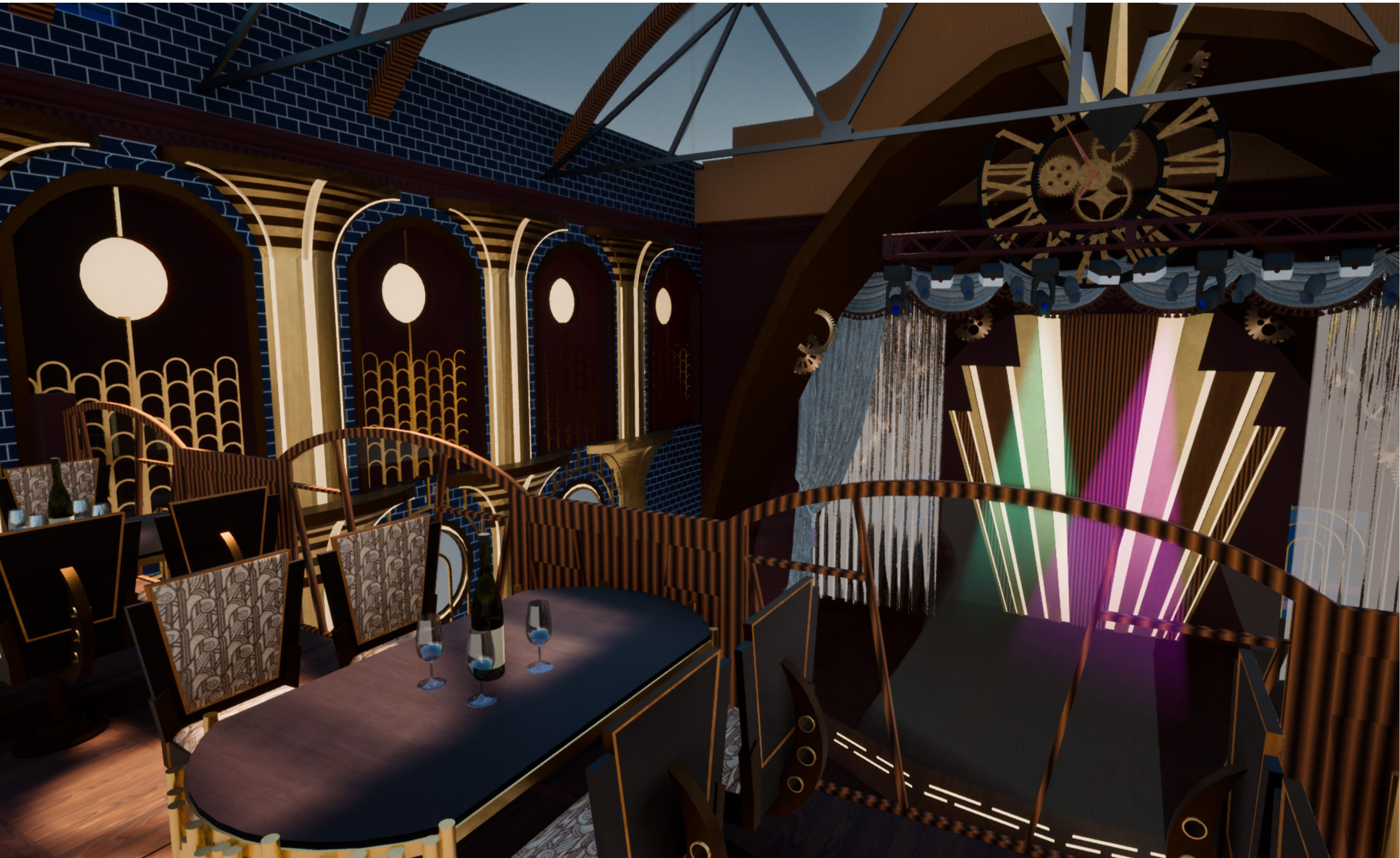
The brief for 'Dinner and a show' presents the challenge of re-designing 'The Tramshed', a community theatre located in Woolwich, South East London, to function as a theatre and dining space. Built in 1916 as an electric substation to supply power to London County Tramways, it aided the surrounding Military structures, allowing efficiency in contribution to the World War. Later used as a factory in 1953 and then taking form as a venue of entertainment in 1973, keeping high spirits in a town which faced an economic downfall. This struggle remains today but its audience also targets those with disabilities, continuing to create a place of belonging and joy.

With a strong connection to history revealing an inevitable optimistic hope at its core 'The Tramshed' behaves with intention to create a space which is a reminder of the past but a tribute to the potentials of the future. Capturing this through design meant exploring how The Tramshed meets Dieselpunk Art Deco.

Dieselpunk it is science fiction that occurs between the two world wars, or takes place in a world where the 1940s never really ended. It also tends to focuses on the history of white Europeans and North Americans.

The Tramshed was build just after the end of World War one and functioned as an Electric substation designed by E.Vincent Harris to supply power to London County Tramways. Helping workers move faster throughout the city. Woolwich being of prime importance for this due to the heavy military influence of the area which included The Royal Military Academy (RMA), for the training of commissioned officers of the Royal Artillery and Royal Engineers, and The Royal Arsenal Gatehouse, used for the manufacture of armaments, ammunition, proofing, and explosives research for the British armed forces.

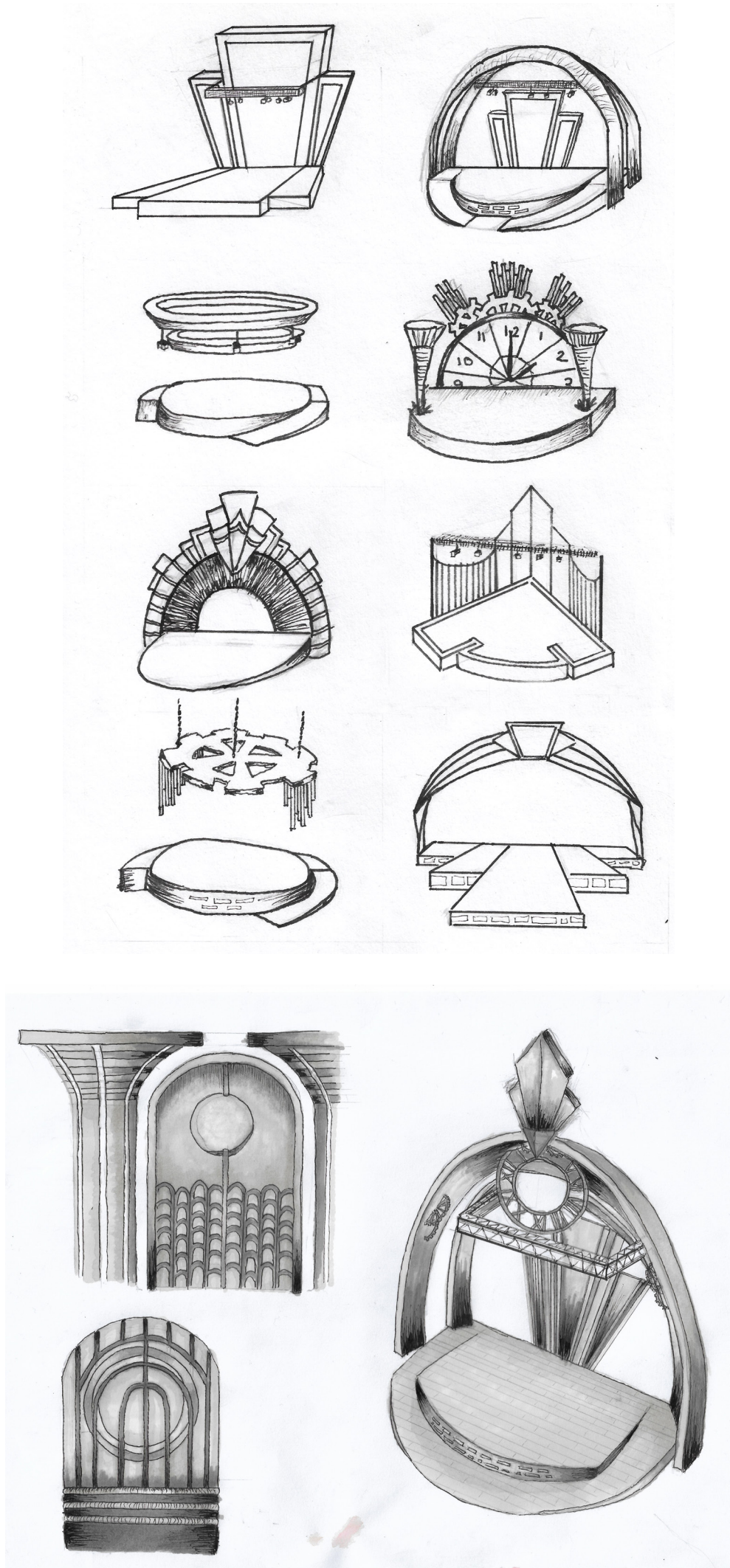
Throughout the Tramshed's history the building continues to pay tribute to the past.. The history becoming a staple of its military past and importance during the war but also as a historical tribute to caberet and adopting older methods of performance and design through the modern era of the 1950s.



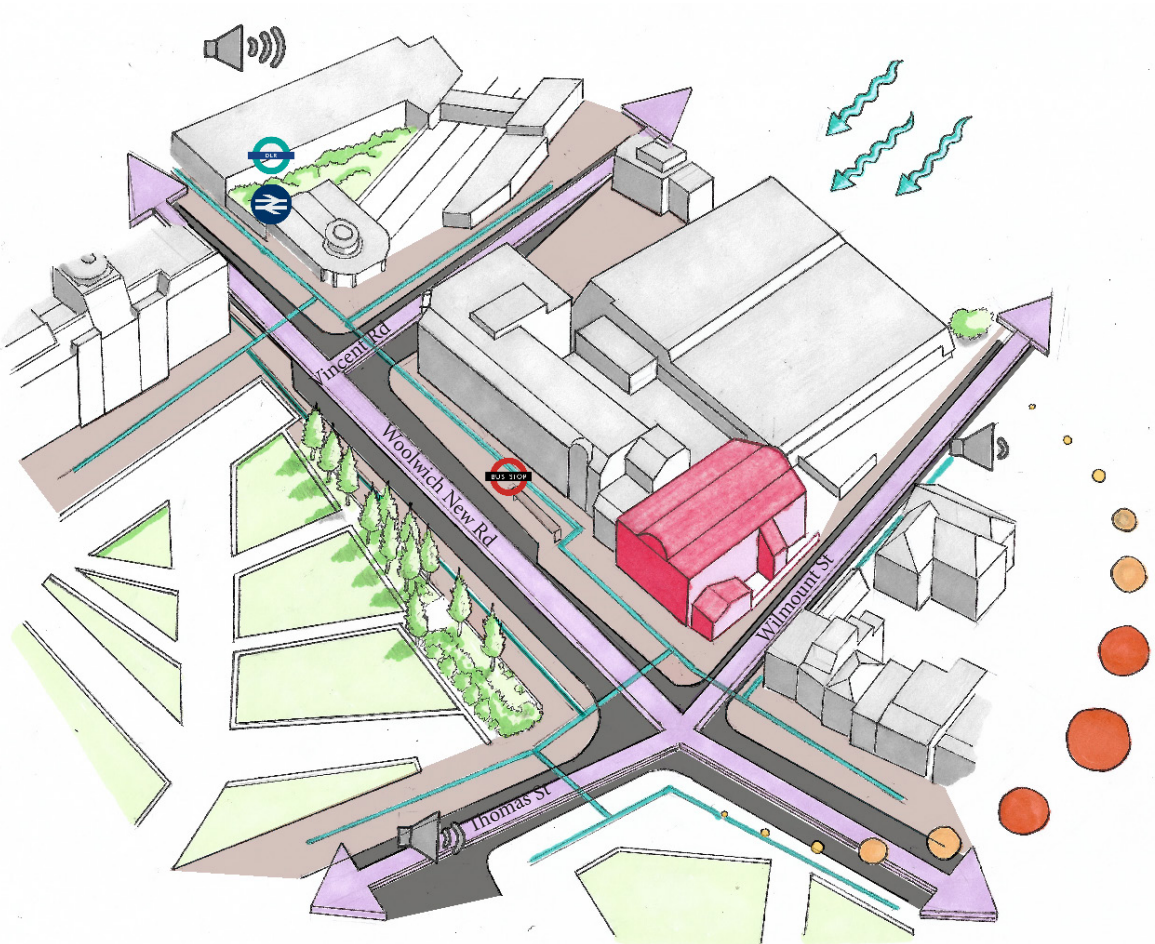


# Design Development + Site Analysis

Below: Sketches

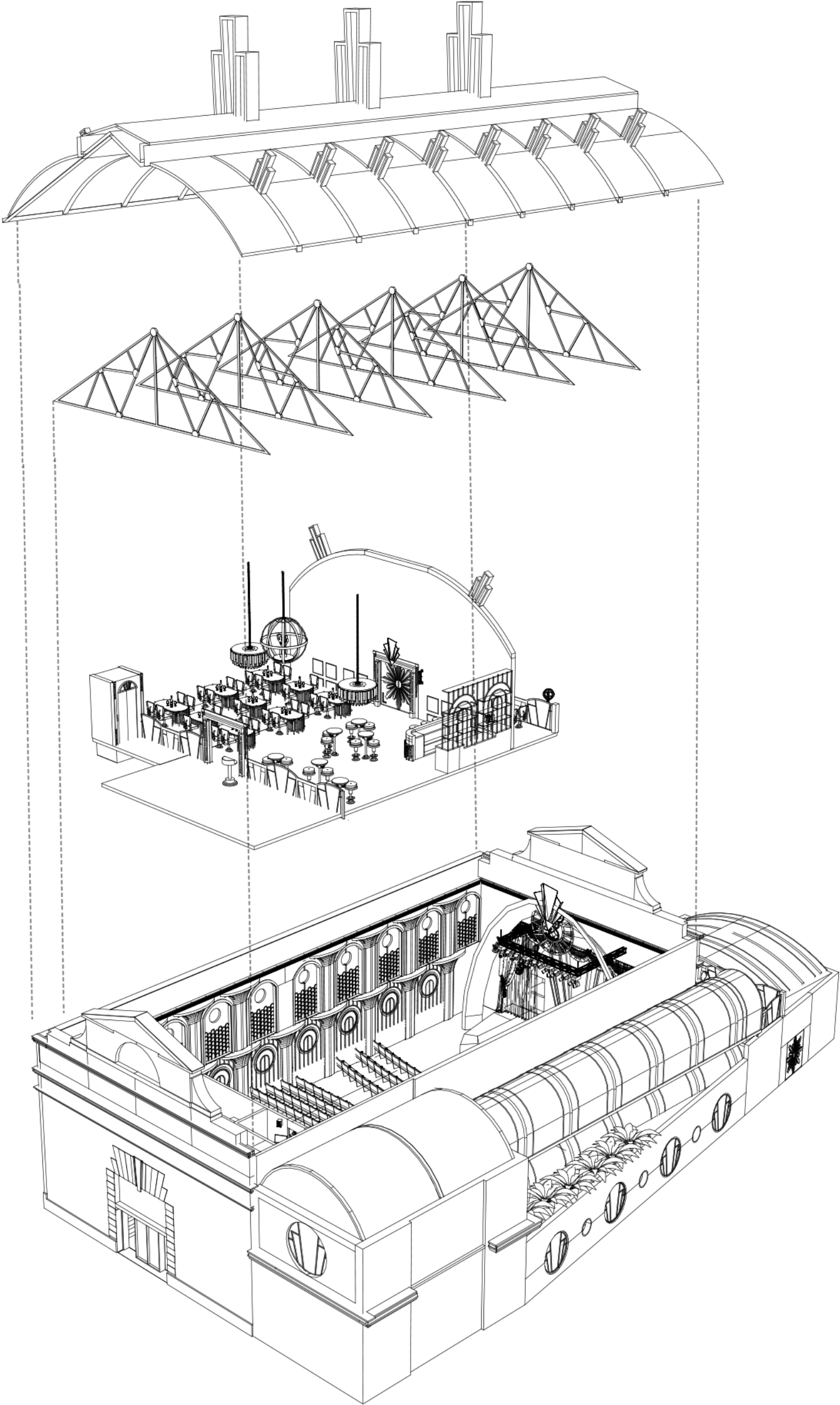
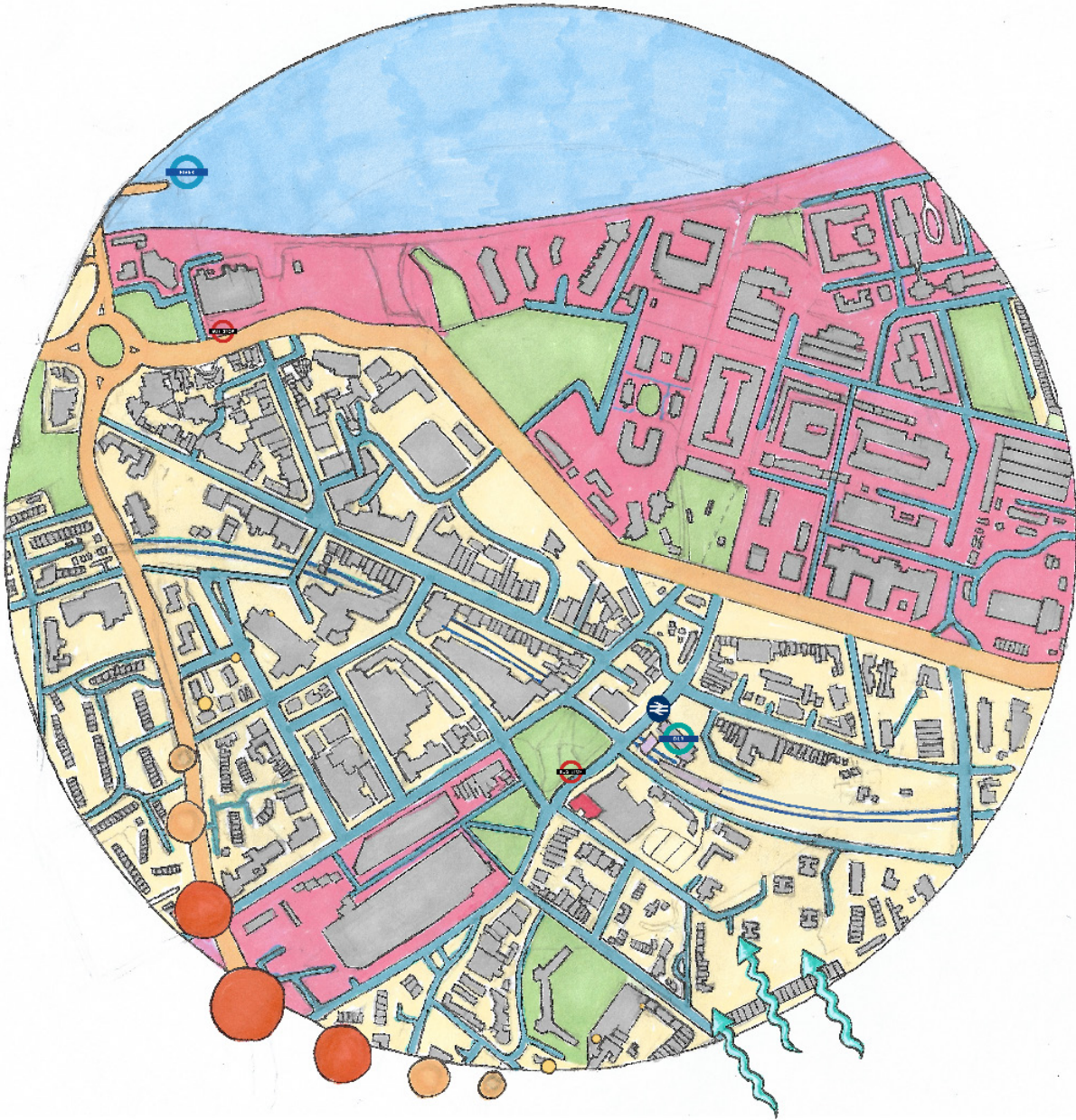


- Bus Stop
- National Rail
- DLR
- Greenery
- Main Road
- Main Walk Way
- Site
- Wind Path
- Sun Path
- Sound Level
- Surrounding Buildings



Above: Site analysis  
Below: Spatial Analysis - Woolwich

- River Boat
- Bus Stop
- National Rail
- DLR
- Greenery
- Former Military
- Burroughs Town
- A Road
- B Road
- Site
- Wind Path
- Sun Path



Above: Exploded Axonometric



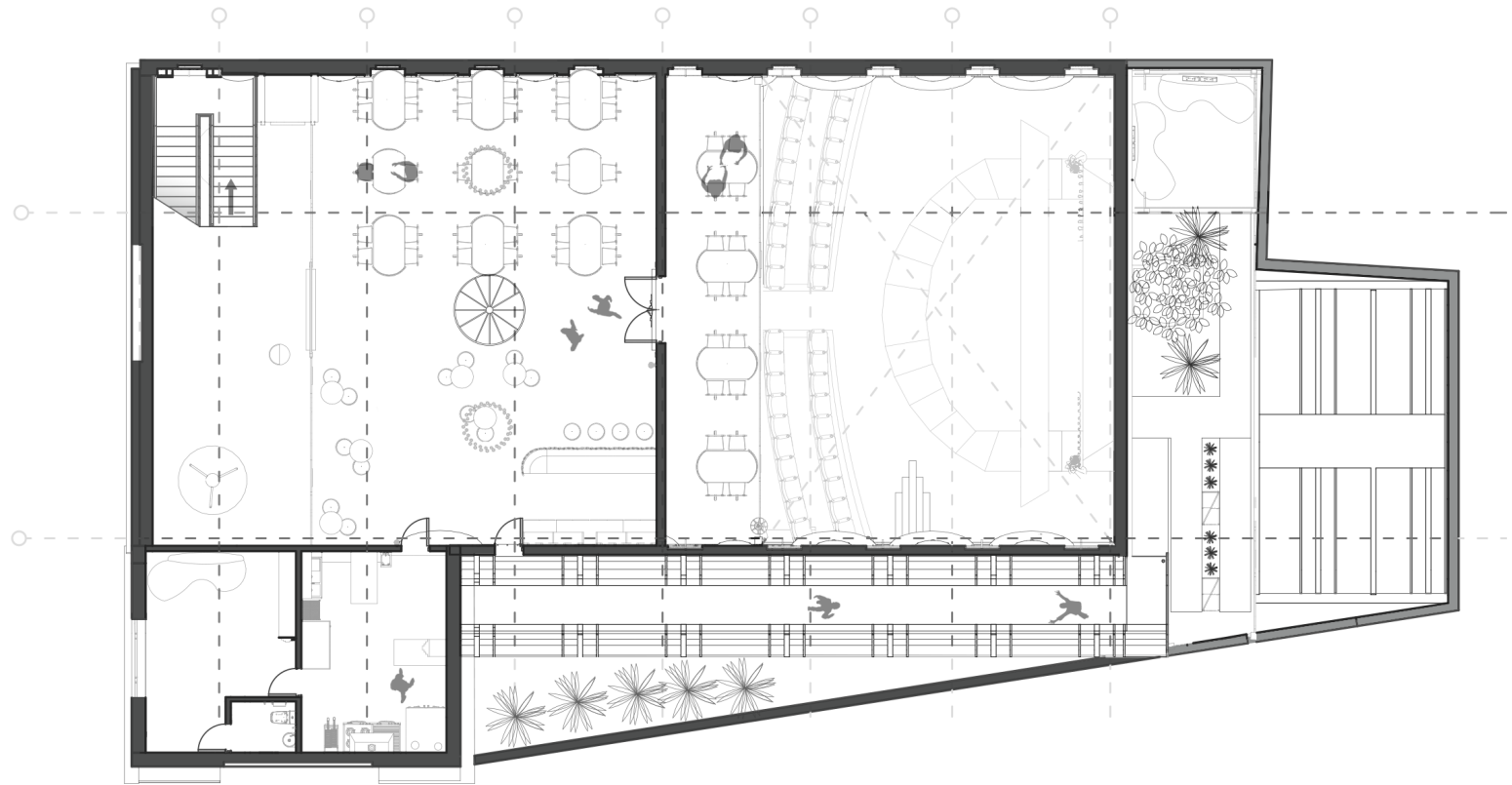
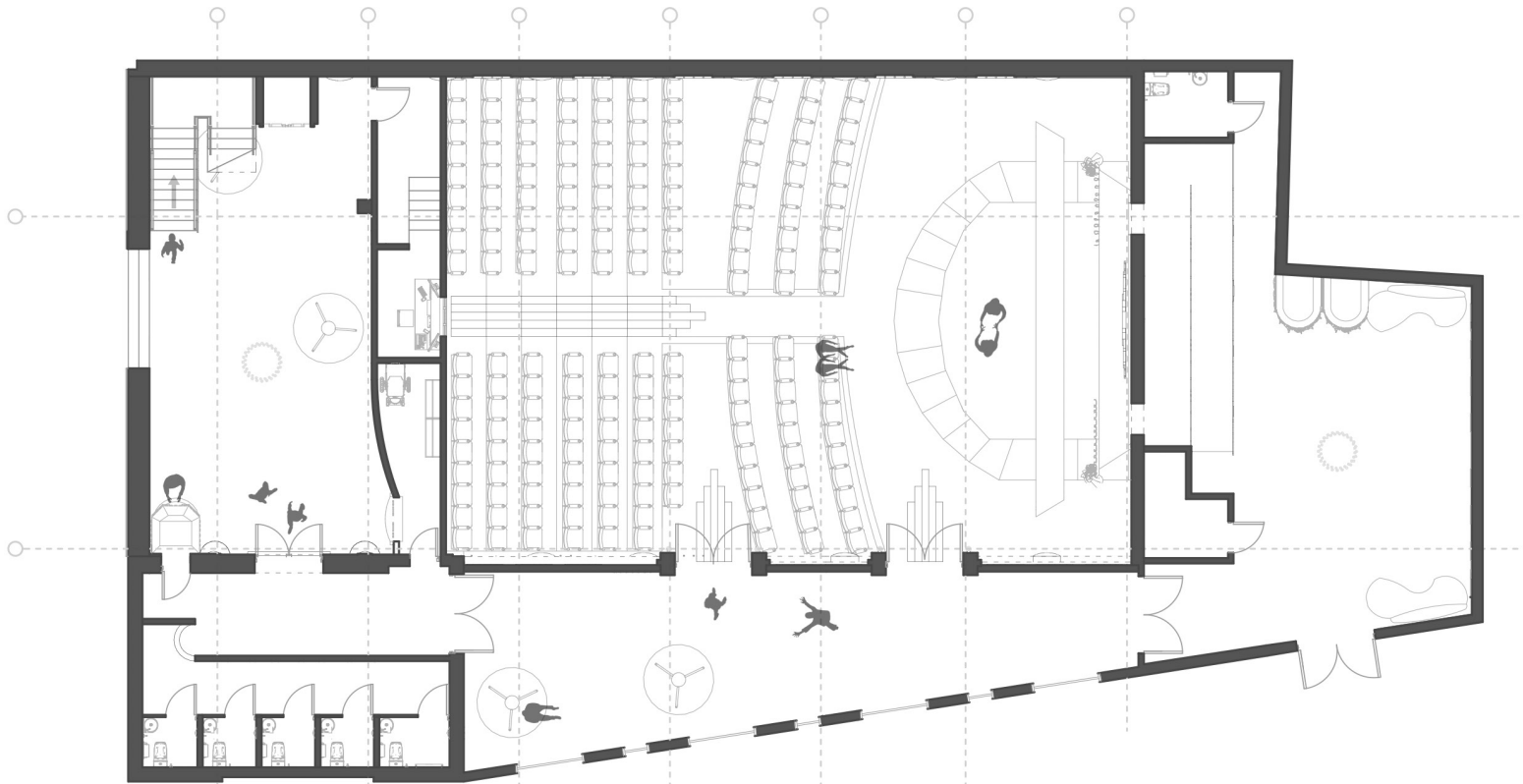
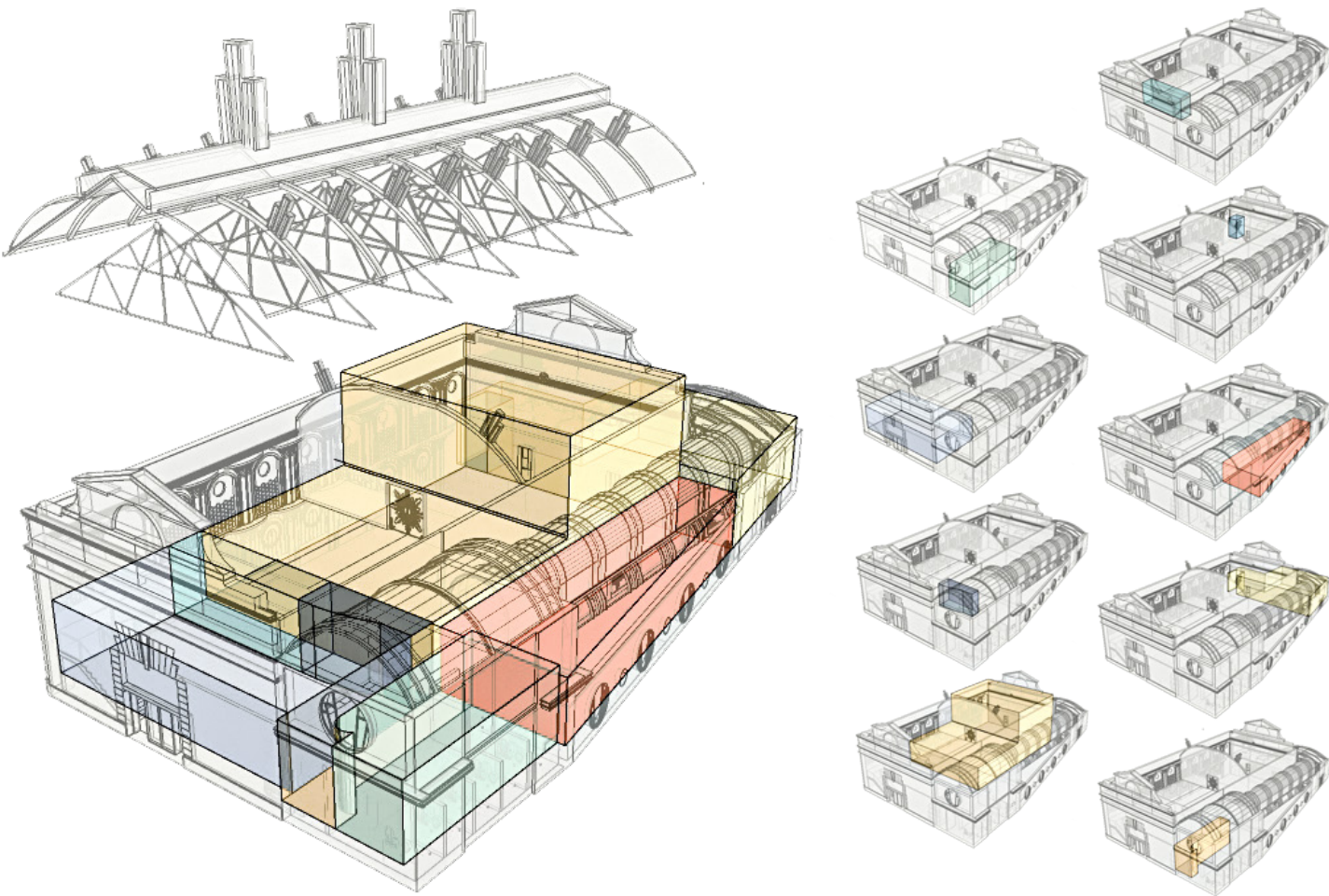
# Technical drawings of proposal

Plans, sections, elevation and spatial zoning massing diagrams

1

First Floor

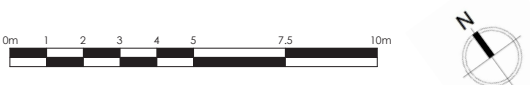
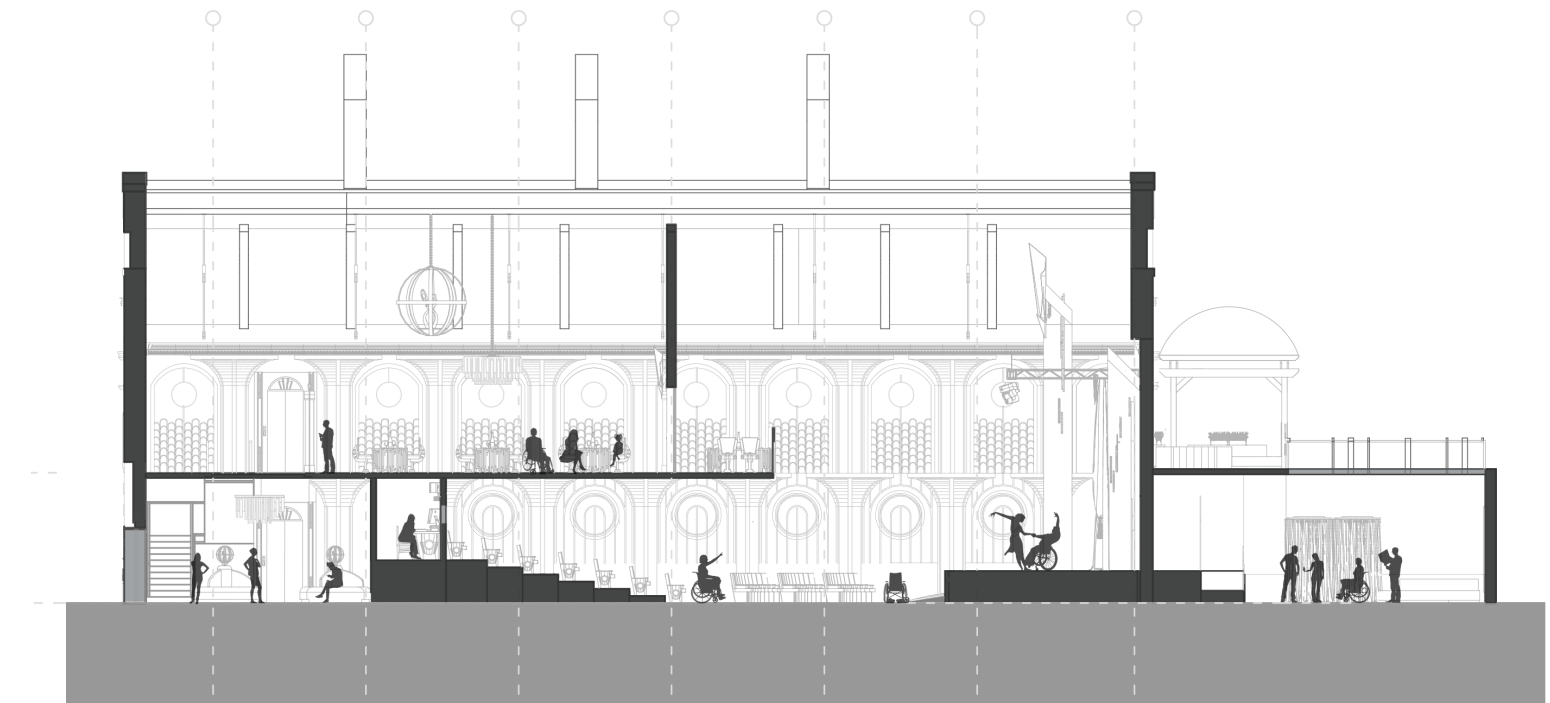
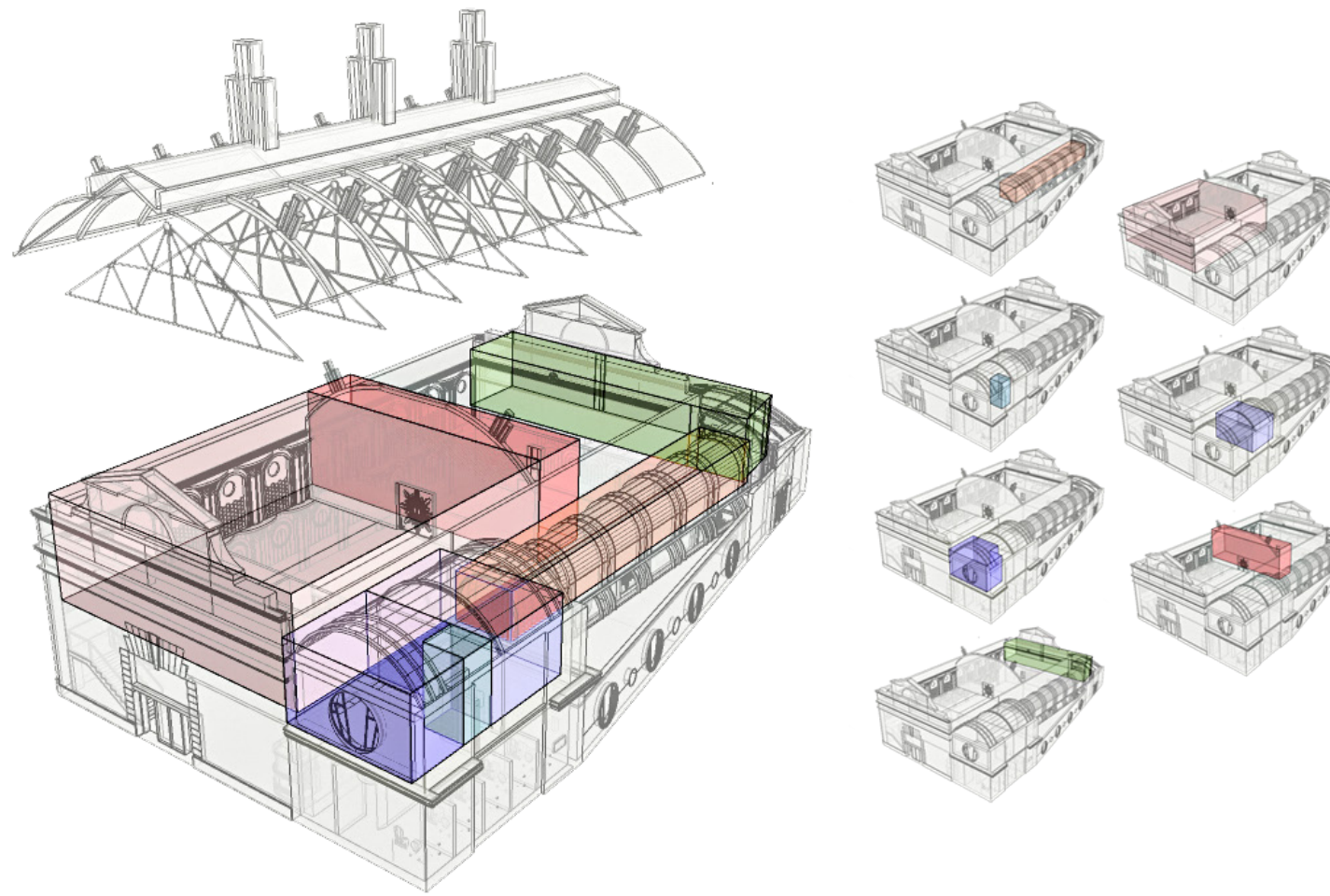
- Staff Room
- Staff Toilet
- Kitchen
- Rooftop Garden
- Restaurant
- Theatre/ Restaurant Mezzanine



0

Ground Floor

- Backstage Toilet
- Cloakroom
- Anteroom
- Corridor
- Control Room
- Lobby
- Uni Sex Toilet
- Backstage/Studio
- Theatre

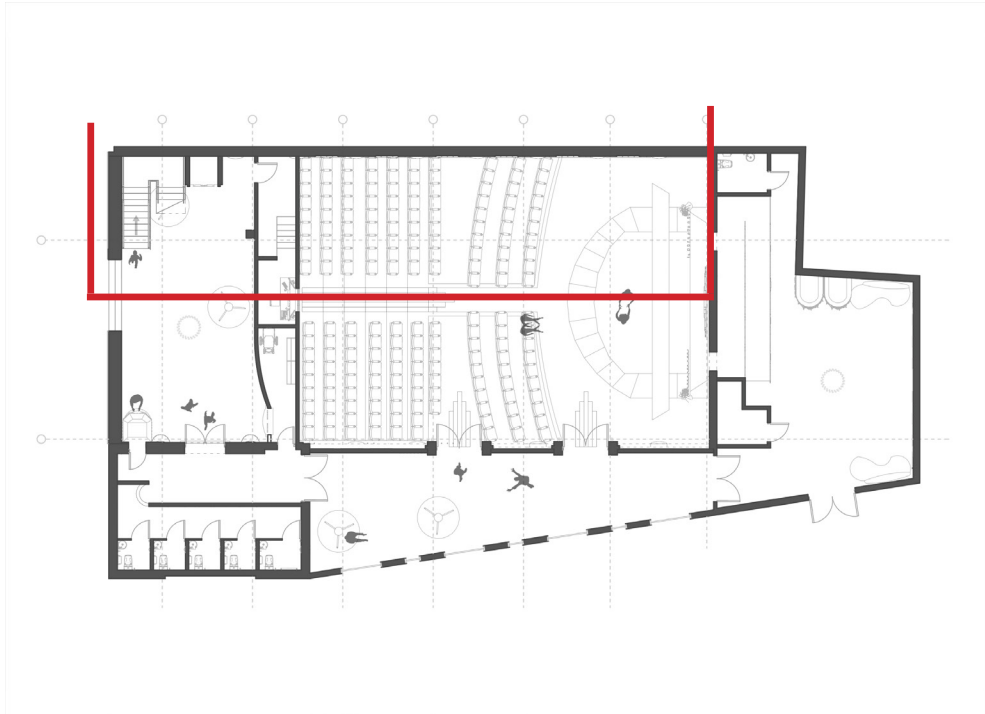




# 1:50 Sectional Model

1:50 Sectional Model made of foamboard, birchwood, greyboard and plastic sheets.

Below: Marked Section taken for model



Above: Full Model 1:50 scale model

Below: Model internals, testing light and atmospheric moods





# Visuals

Visuals showing interior of theatre and restaurant and furniture designs

