

# OPEN FOR BUSINESS

MELISSA MUSTAFA

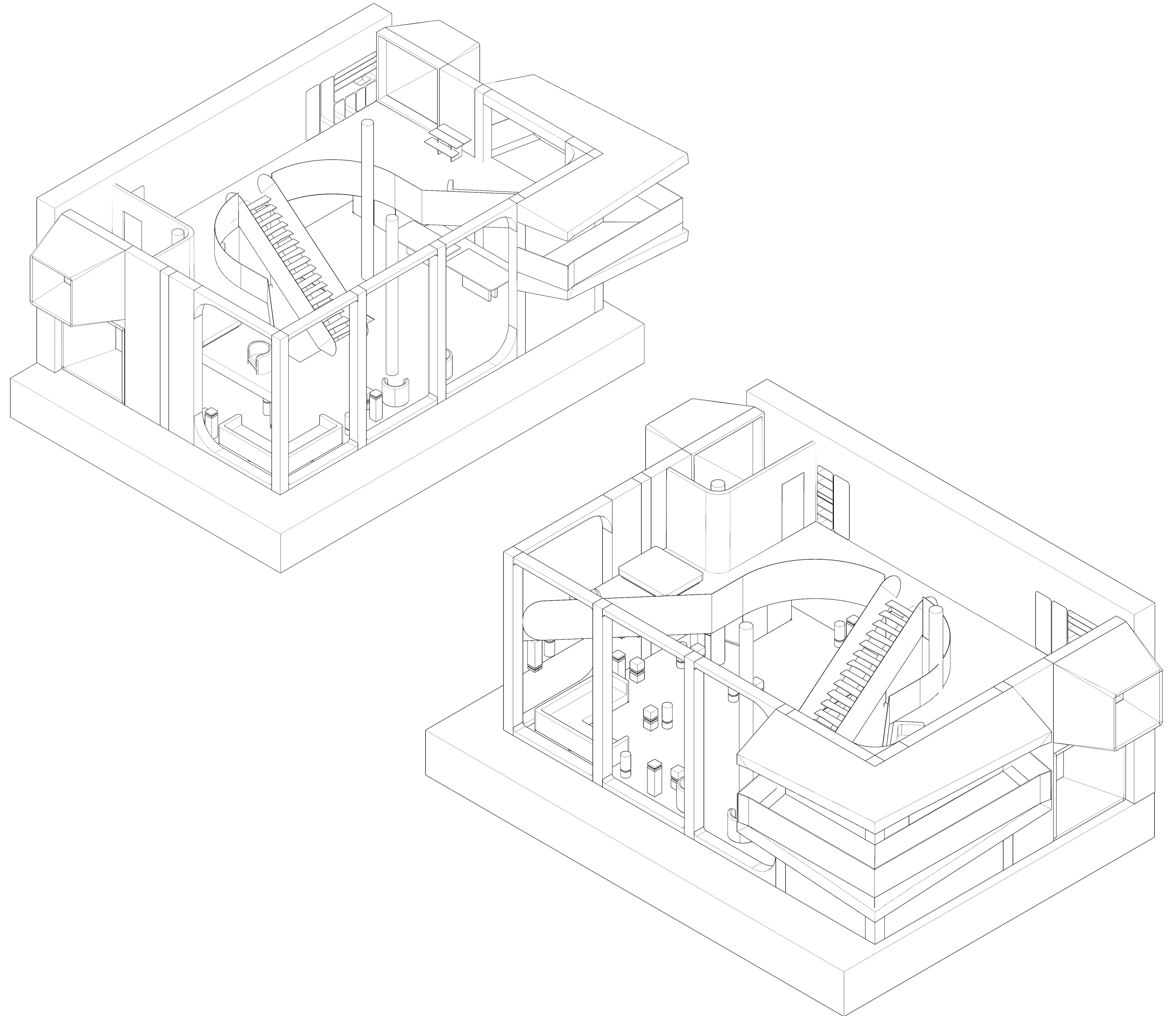
'Open for Business' is a brief to produce an Artist's live/work space including a show-case of their work in a building located in Arid Point, 1 Lockside Way, London E16 2GZ. My client was fashion designer Johanna-Maria Parv - <https://www.johanna-parv.com/>

To execute this task I needed to research and understand my client's work. What size of object do they produce? What is their design philosophy? Do they need a workshop to produce their designs with machinery and specialist equipment or just a computer and a desk?

When designing the gallery/show-space, I needed to consider what size the work will be and how it will be displayed hence creating stalagmite and stalactite-style plinths from floor to ceiling as a exhibition strategy.

I needed to explore the public, semi-public and private areas of the design in order to mesh creative and business activities with an everyday domestic vernacular.

One of the crucial steps in this process was to design and fabricate a 1:1 prototype lamp. This was inspired by the female form much like Johanna's active cycle wear for the empowered woman on the street.



ISOMETRIC OF PROPOSED LIVE/WORK SPACE

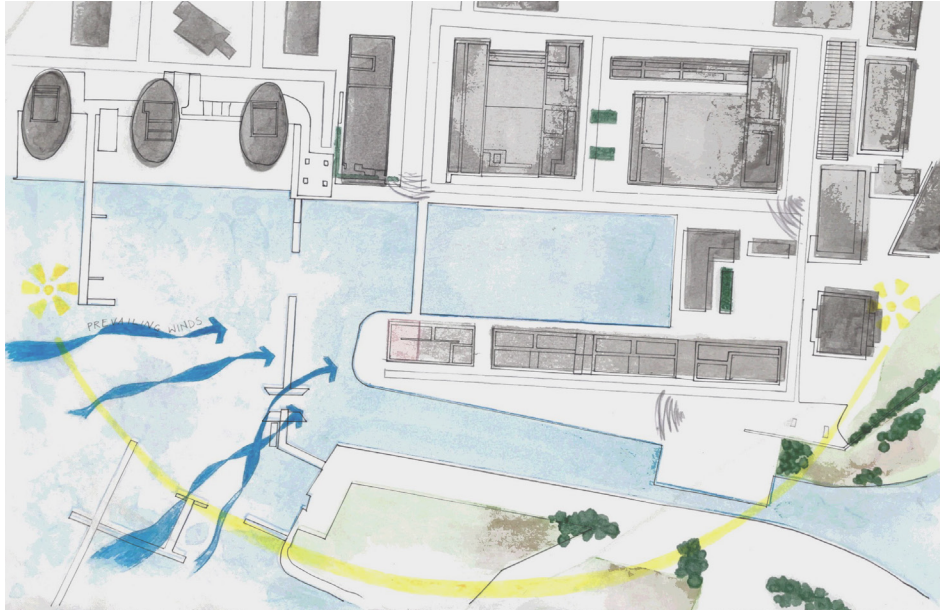




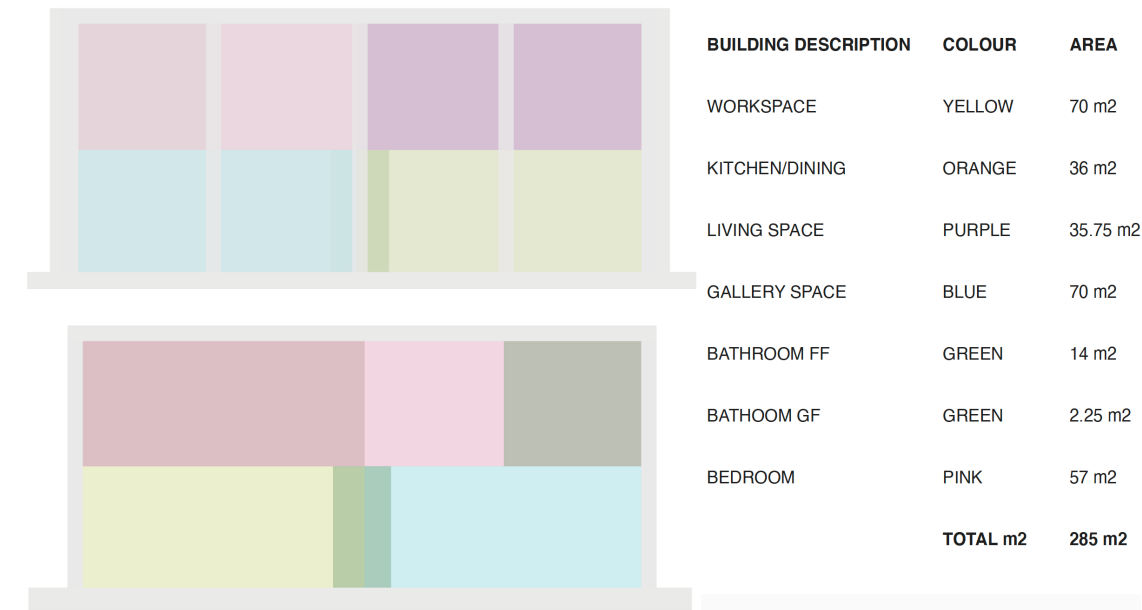
CLOSE UP OF SITE EXTERIOR



SITE ANALYSIS



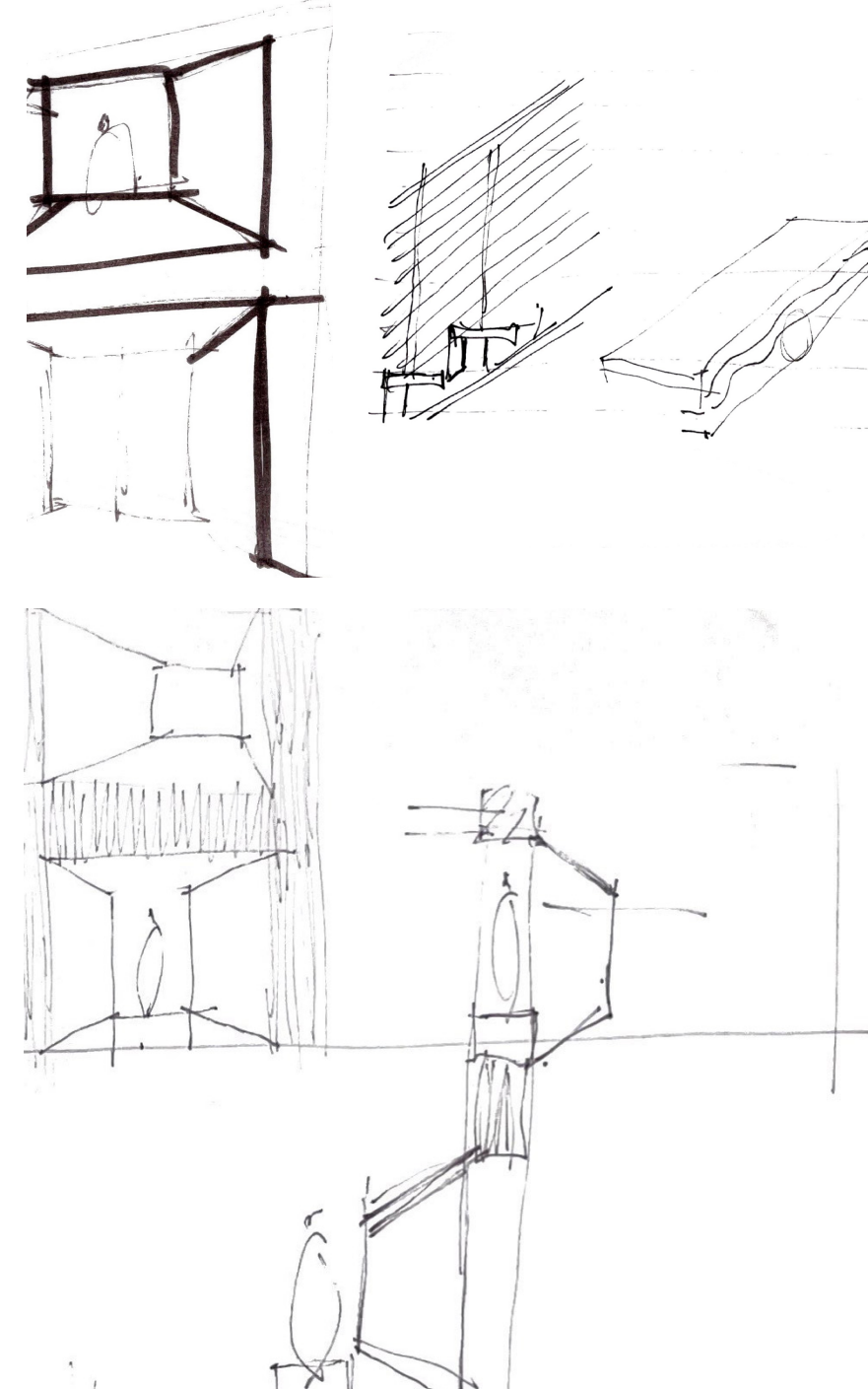
SITE ANALYSIS



MASSING DIAGRAM + SCHEDULE OF ACCOMMODATION



MATERIAL PALETTE



DESIGN DEVELOPMENT



CONCEPTUAL COLLAGE





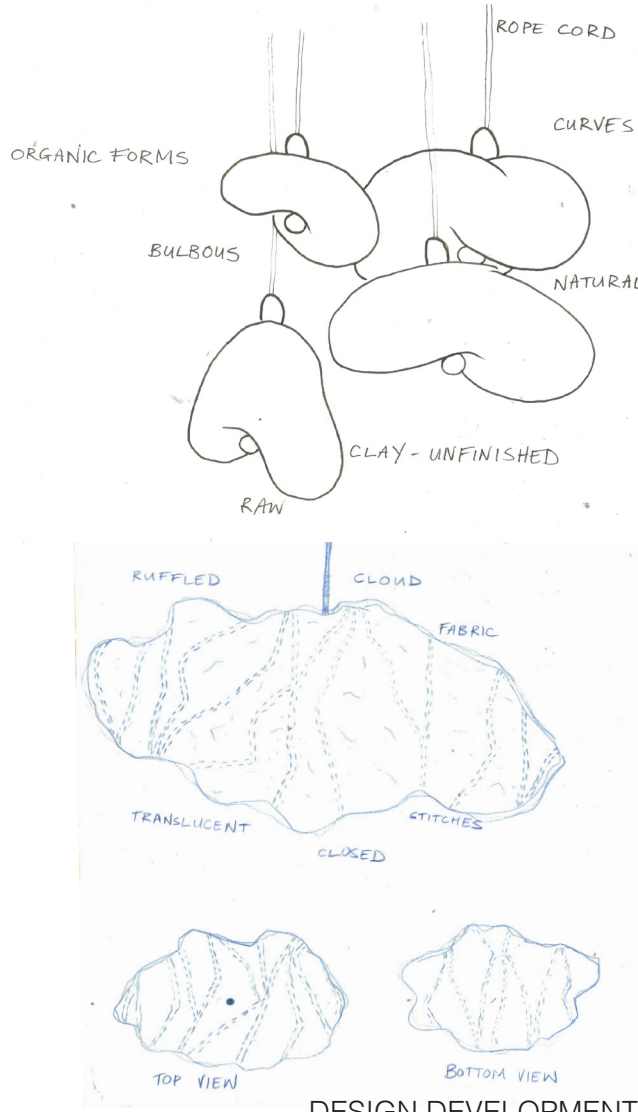
THE THIRD SENSE



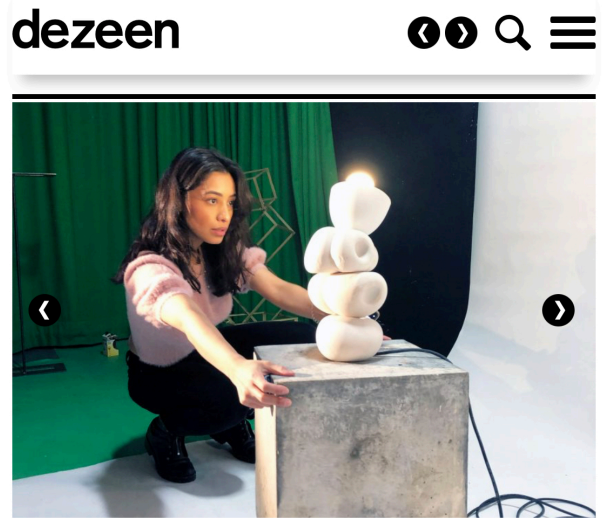
CONCEPTUAL COLLAGE



MAKING PROCESS



DESIGN DEVELOPMENT



**Ten eclectic lighting designs for nail salons from University of East London students**



Dezeen staff | 15 June 2020  
Second-year interior design [students](#) from the [University of East London](#) have created a series of lamps for a fictitious nail salon as part of this [VDF school show](#).

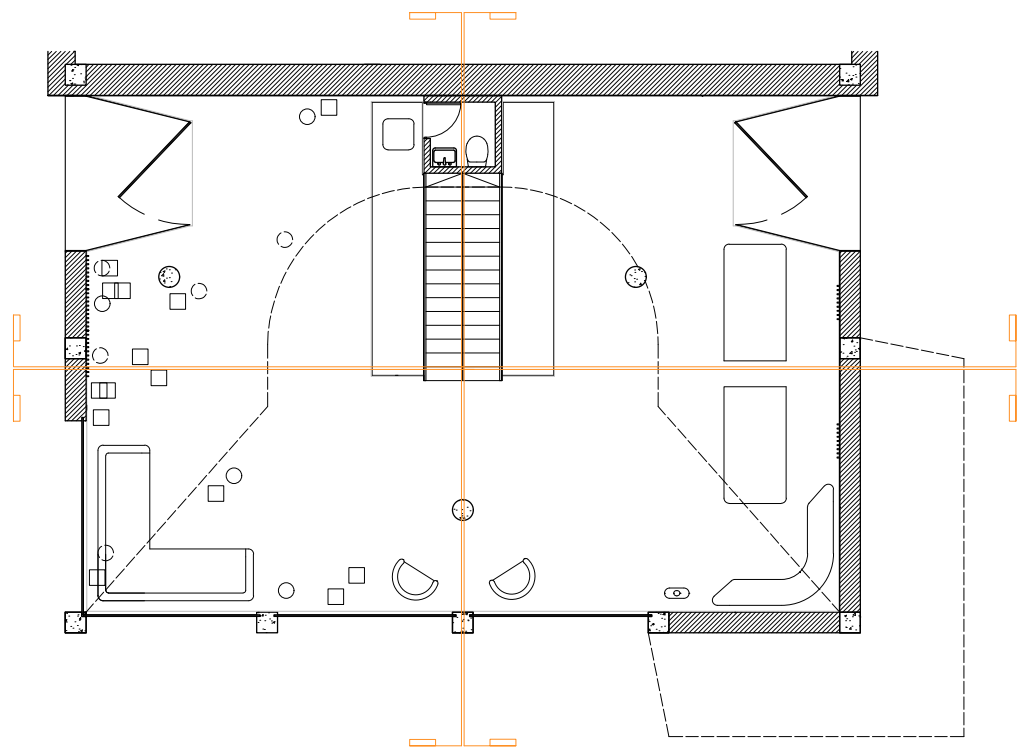
The prototypes are a response to a brief that called on the students to reimagine the interior of a classic East London [nail studio](#) and capture its essence within a light.

According to the course's tutors, this served as an exercise to explore "lifestyle, personality, materiality and colour in [interior design](#)".

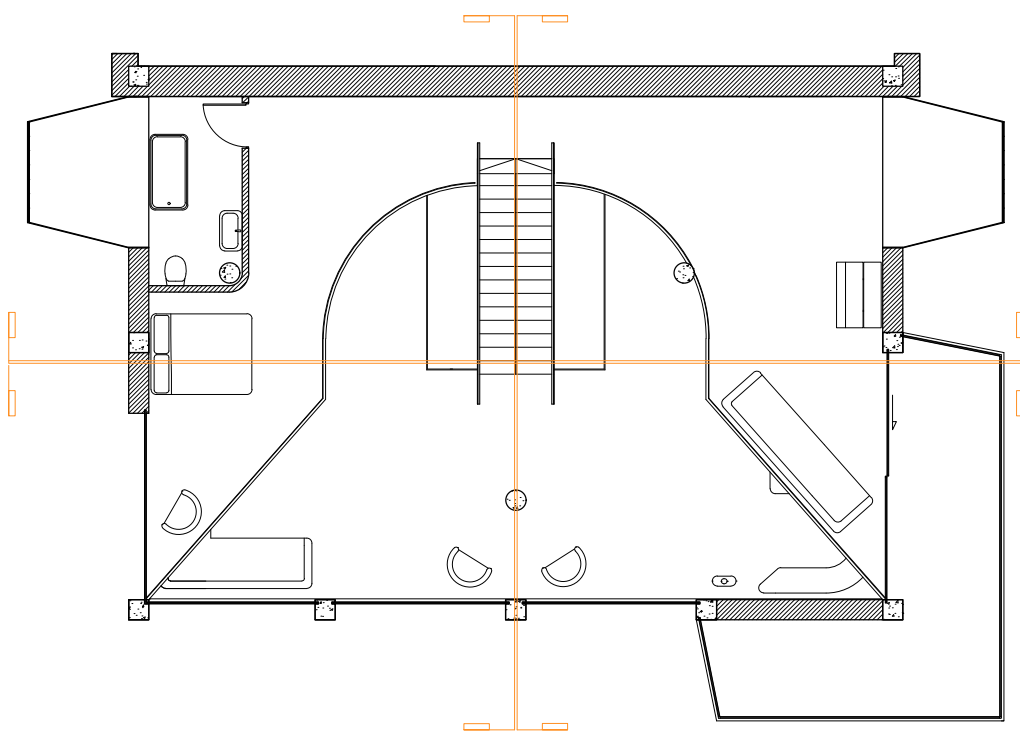
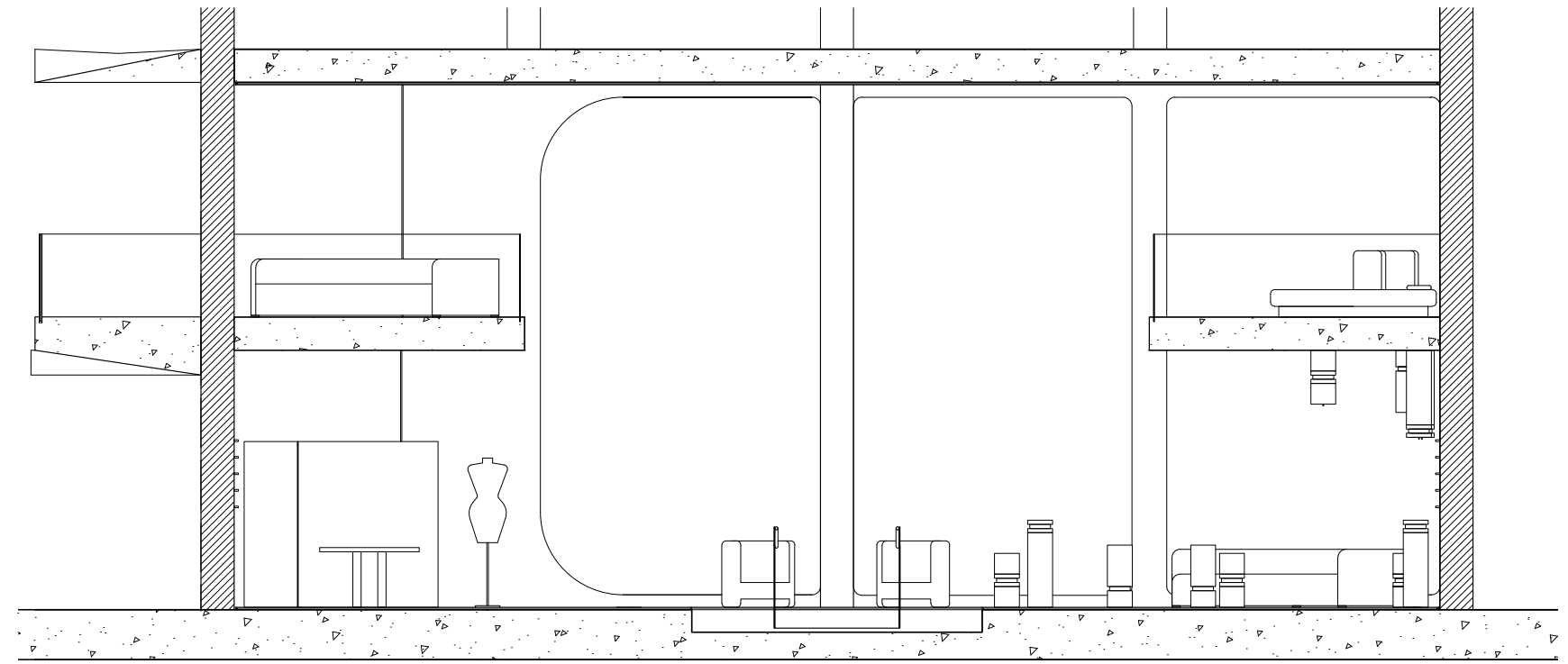
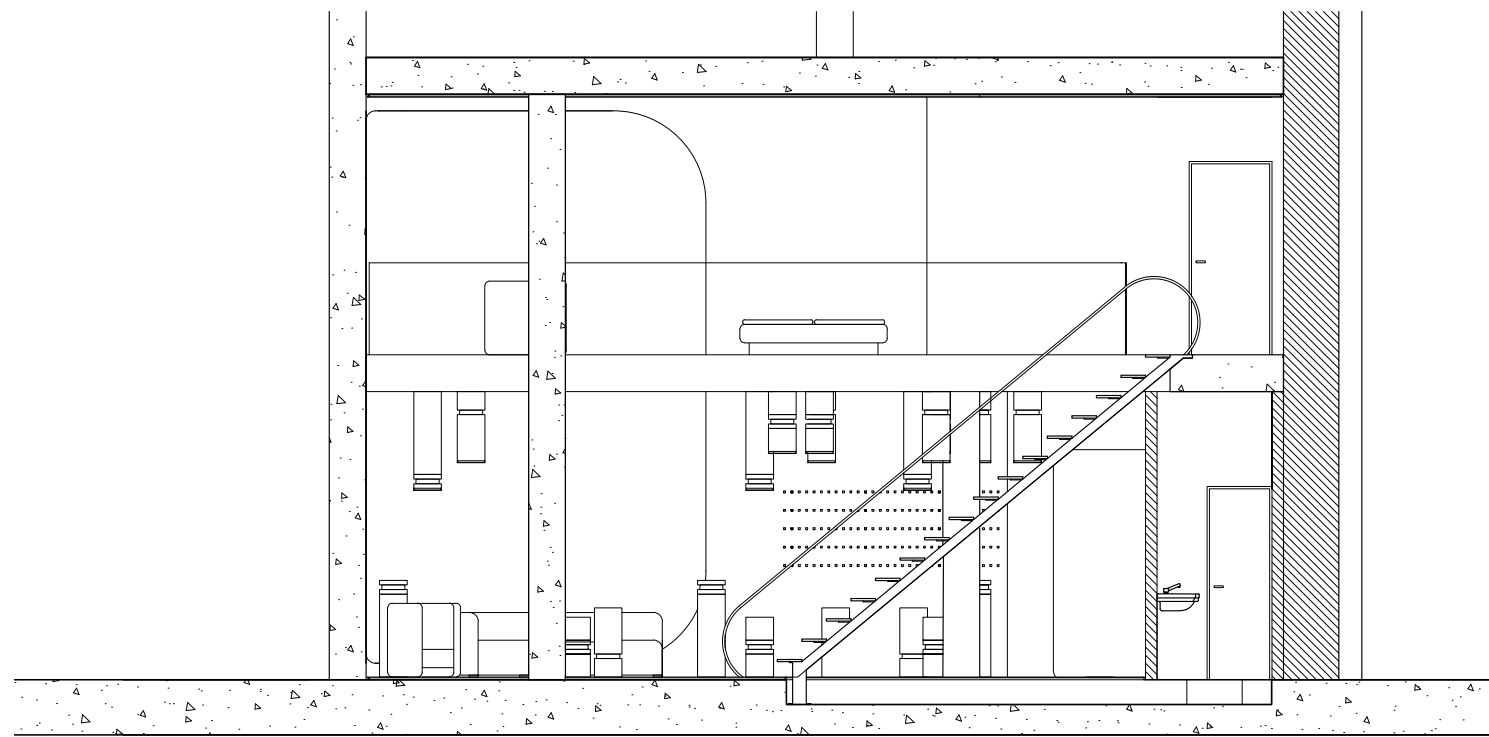
MOBILE LAMP

PRESS

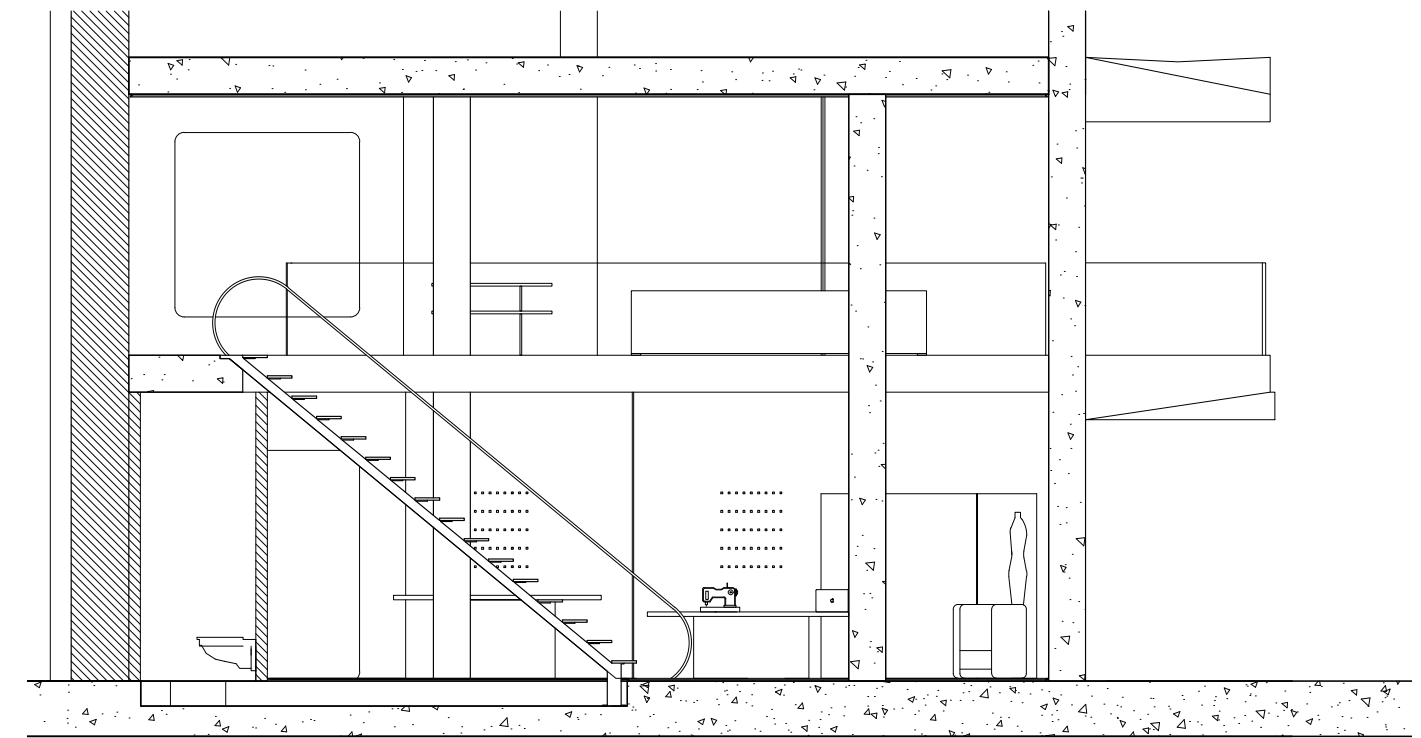
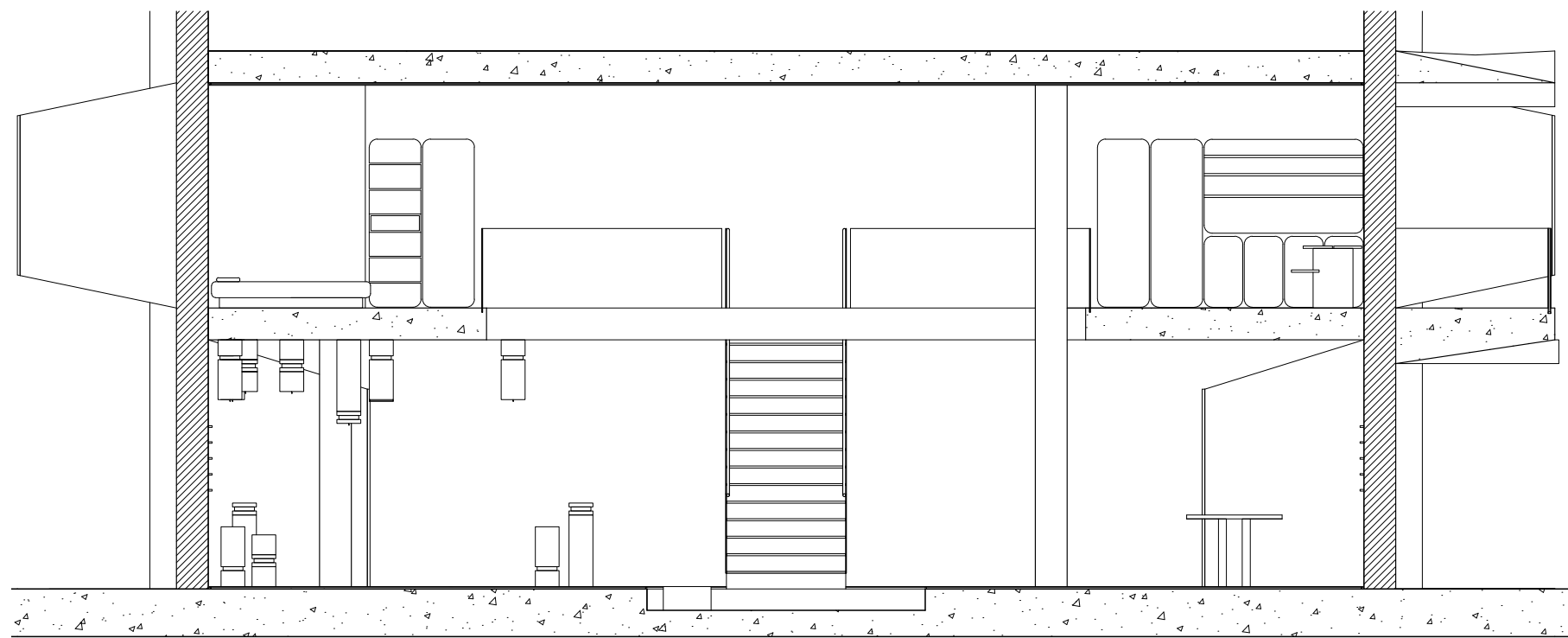




PROPOSED GROUND FLOOR PLAN

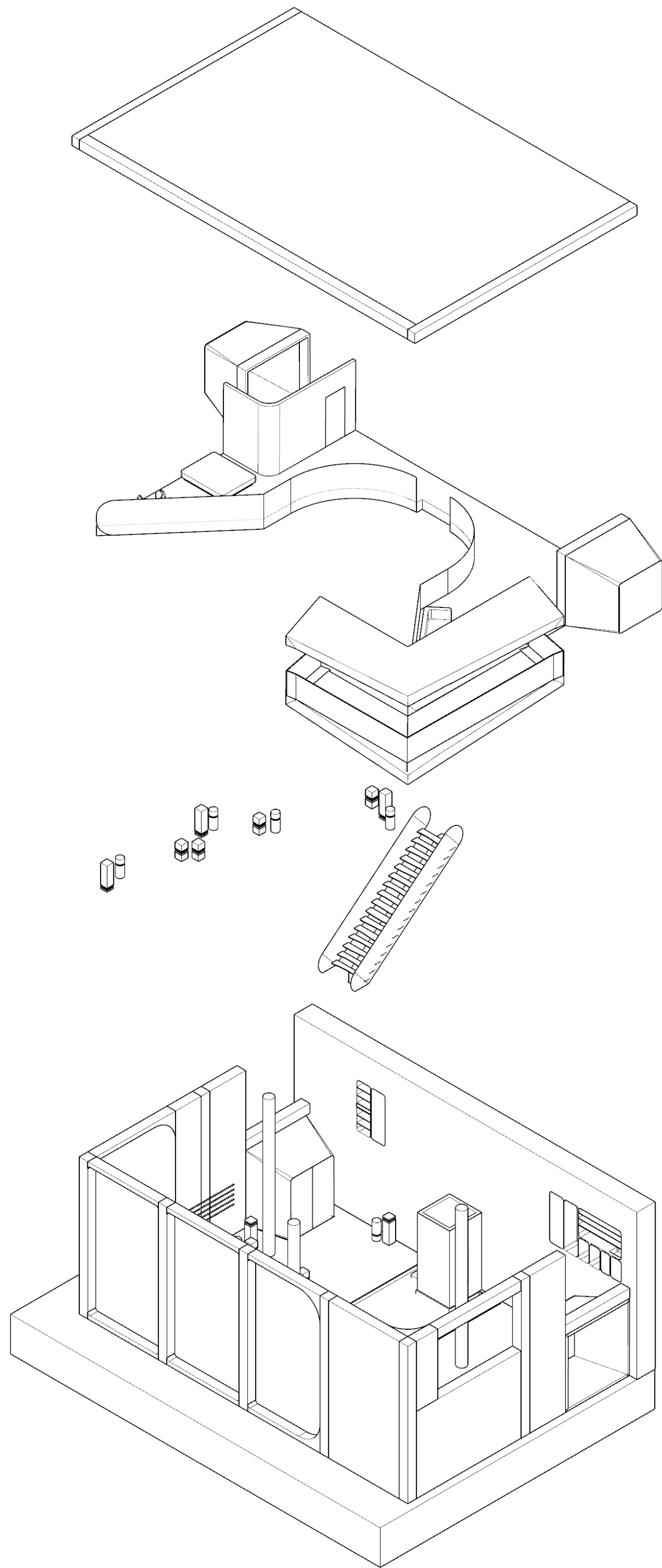


PROPOSED FIRST FLOOR PLAN

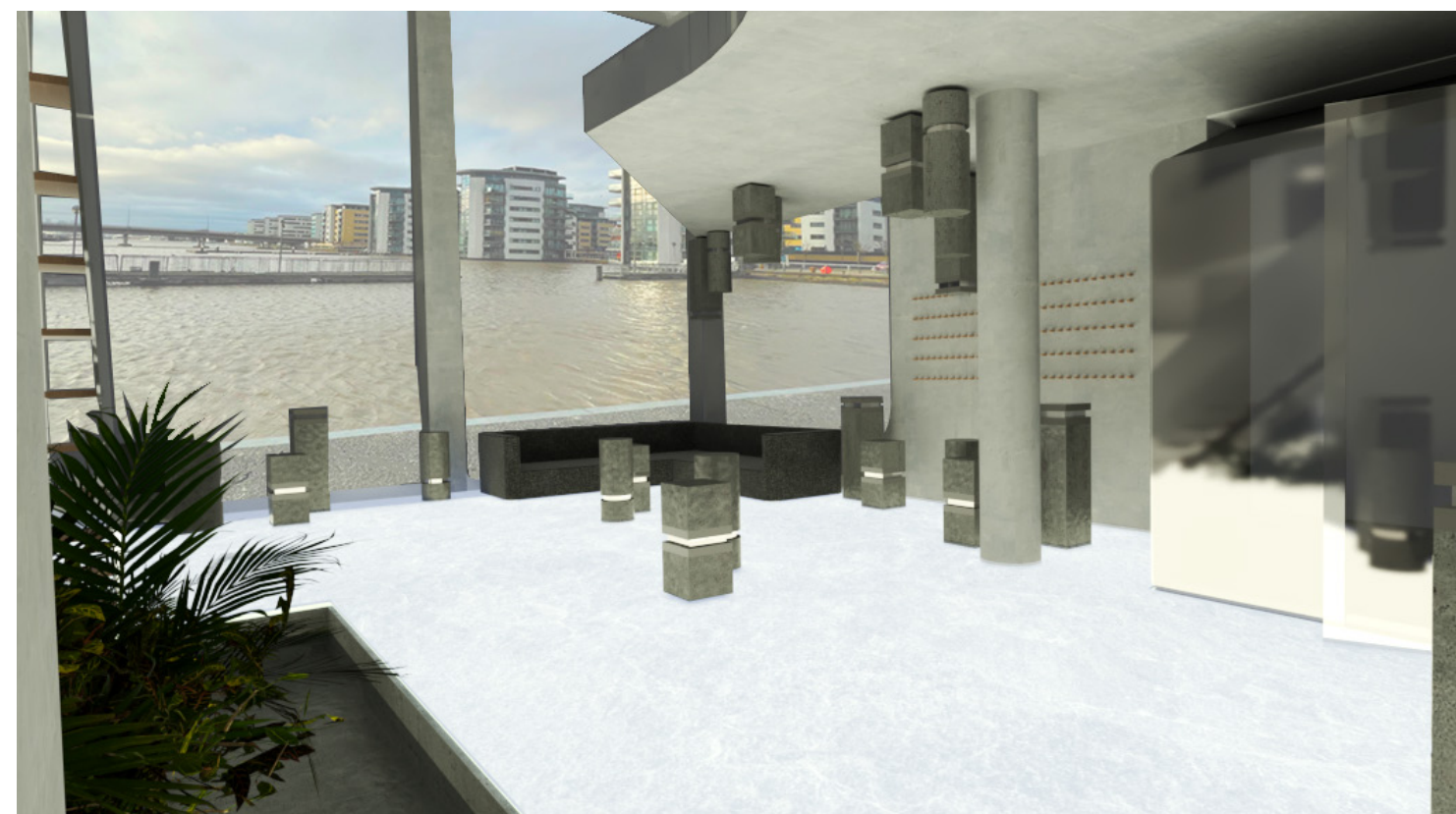


PROPOSED SECTIONAL DRAWINGS





EXPLODED ISOMETRIC



CONCEPTUAL RENDERS