

Climate emergency and sustainability : Sustainable restaurant and food center

The main concept of this project is sustainability, having a sustainable plan to work out the restaurant and food center strategy is the most important than only sustainable materials.

Sustainable materials are also part of the project, the most of both spaces are made of clay and straw, reused wood and sustainable methods.

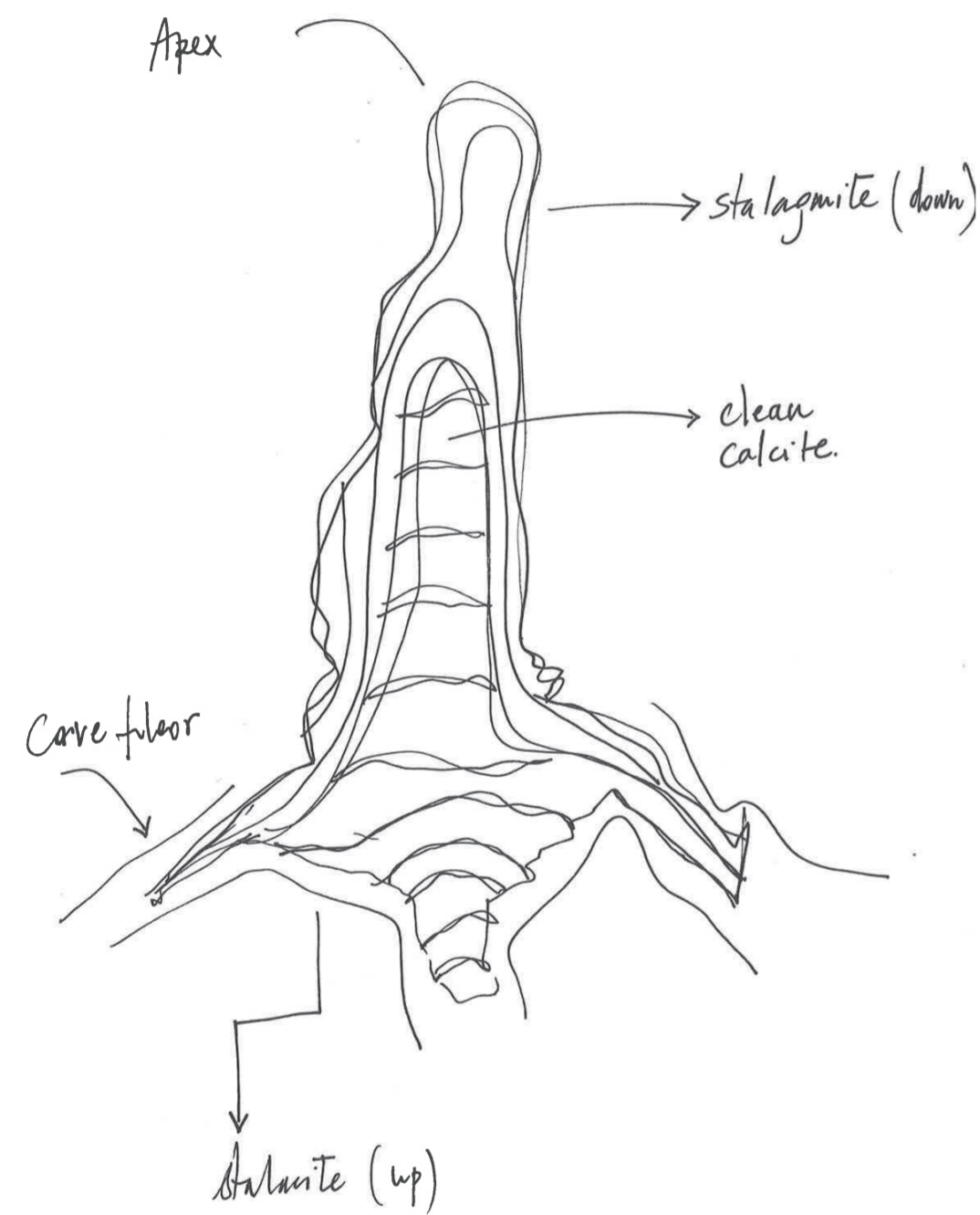
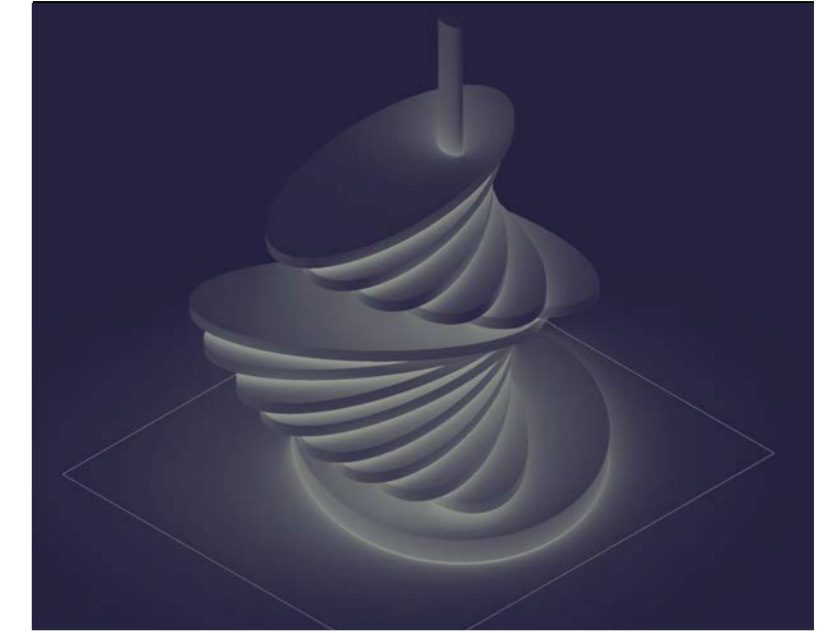
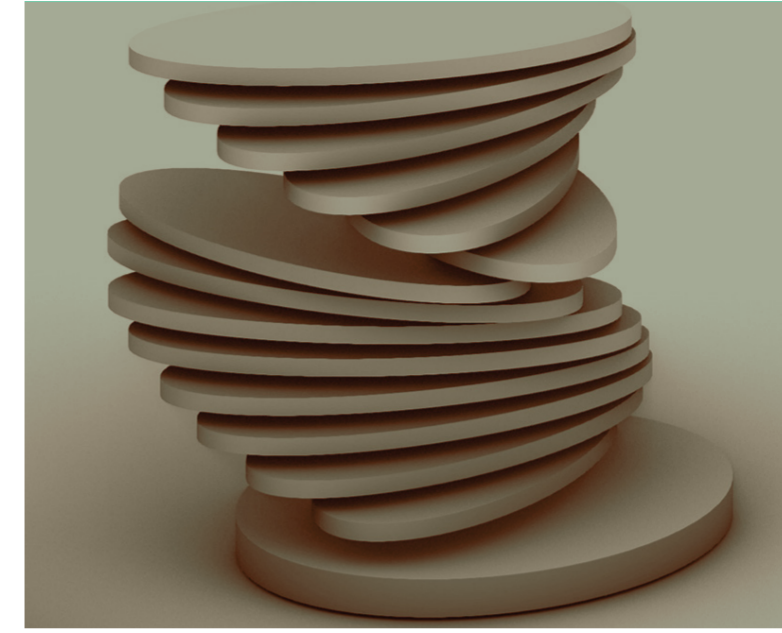
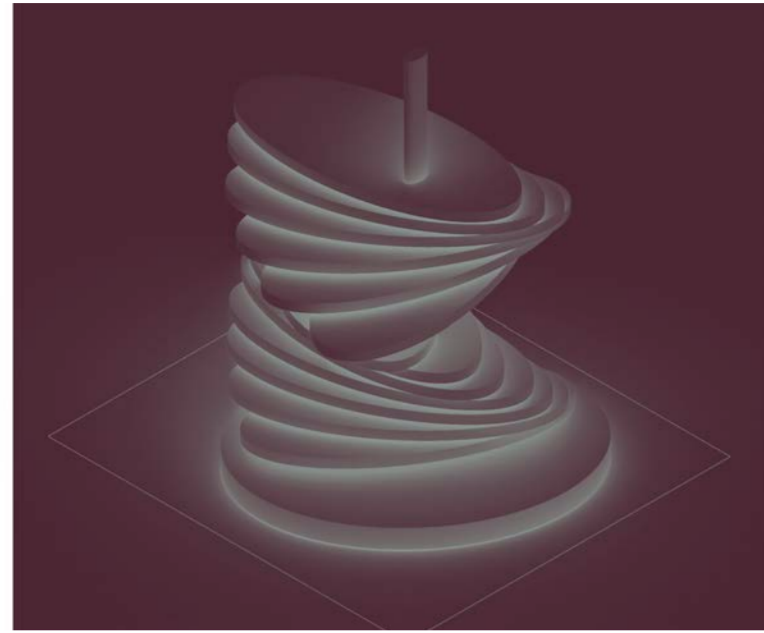
Vertical farming is a big part of this concept, giving the space a reusable source of food and not costing due to ecological methods as well is maintainable.

As well, the restaurant will containing methods to donate for food center such as selling craft clay jars in the restaurant and veggies from vertical farming.

Clients will be able to have a wonderful journey around the vertical farming where they can pick up the vegetables they will eat by their own, and can also purchase them.



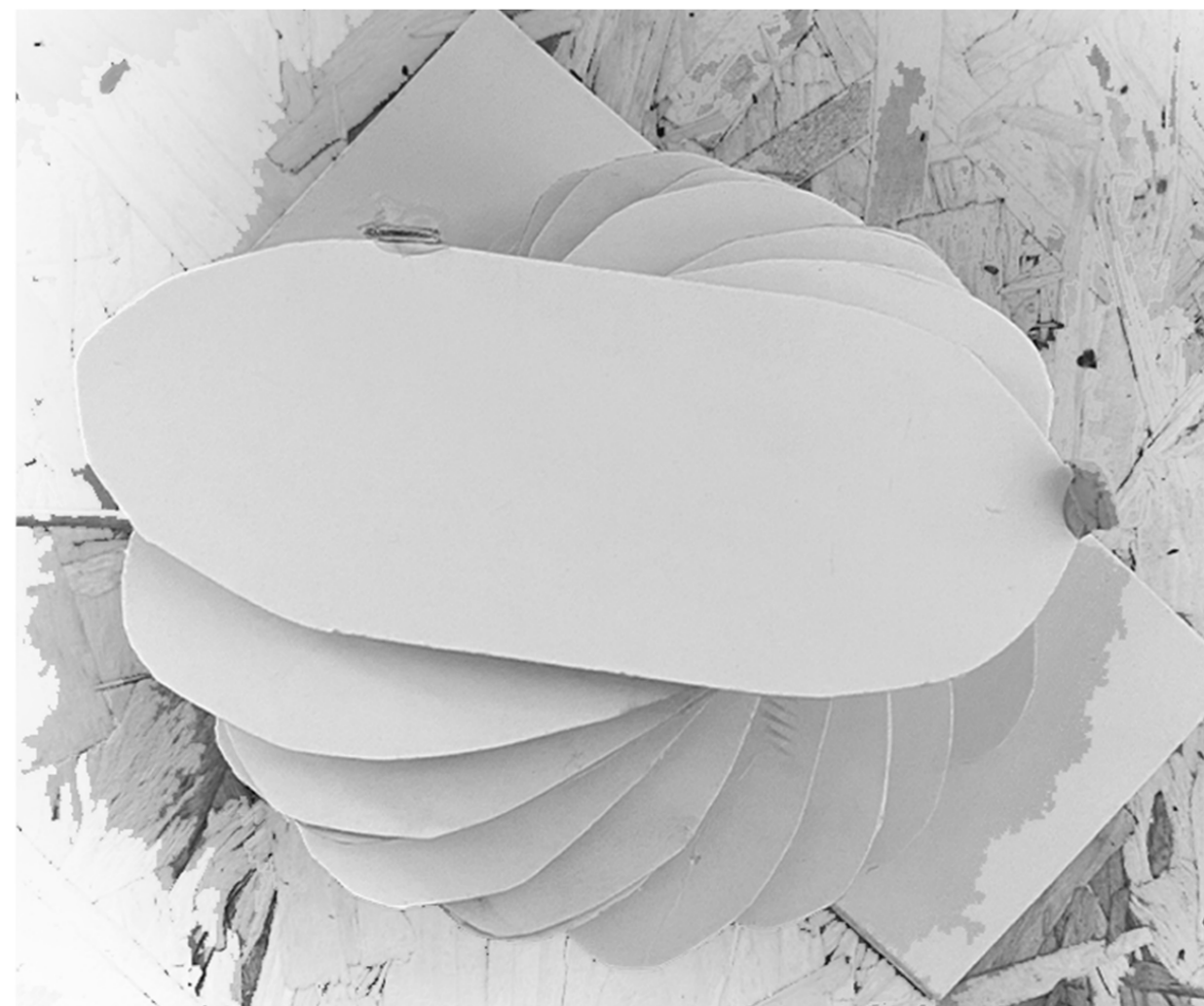
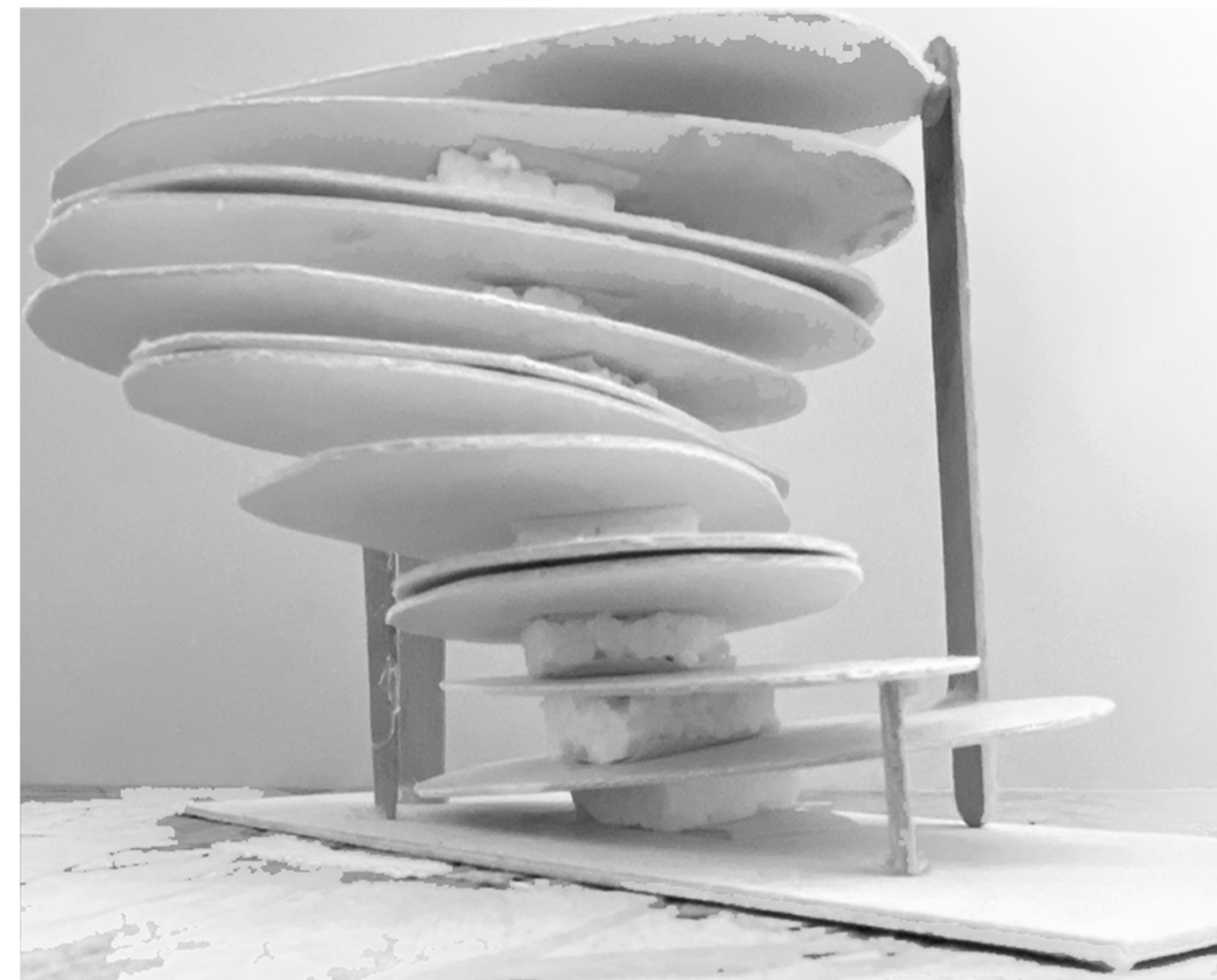
The stalagmite waves



Concretion = speleothems
 environment = Cavity

A stalagmite is a type of rock formation that rises from the floor of a cave due to the accumulation of material deposited on the floor from ceiling drippings.

a Vertical farming is the agricultural process in which crops are grown on top of each other, rather than in traditional, horizontal rows. Growing vertically allows for conservation in space, resulting in a higher crop yield per square foot of land used.



Vertical farming shape is typical and similar, therefore i wanted to develop the usual look of hydroponic into a wavy shape inspired by the stalagmite.

Stalagmite and vertical farming are both growing due to water, one in a cave and the other in a chamber.

Vf and stalagmite are both long lasting and natural, therefore I combined them for my vf concept .

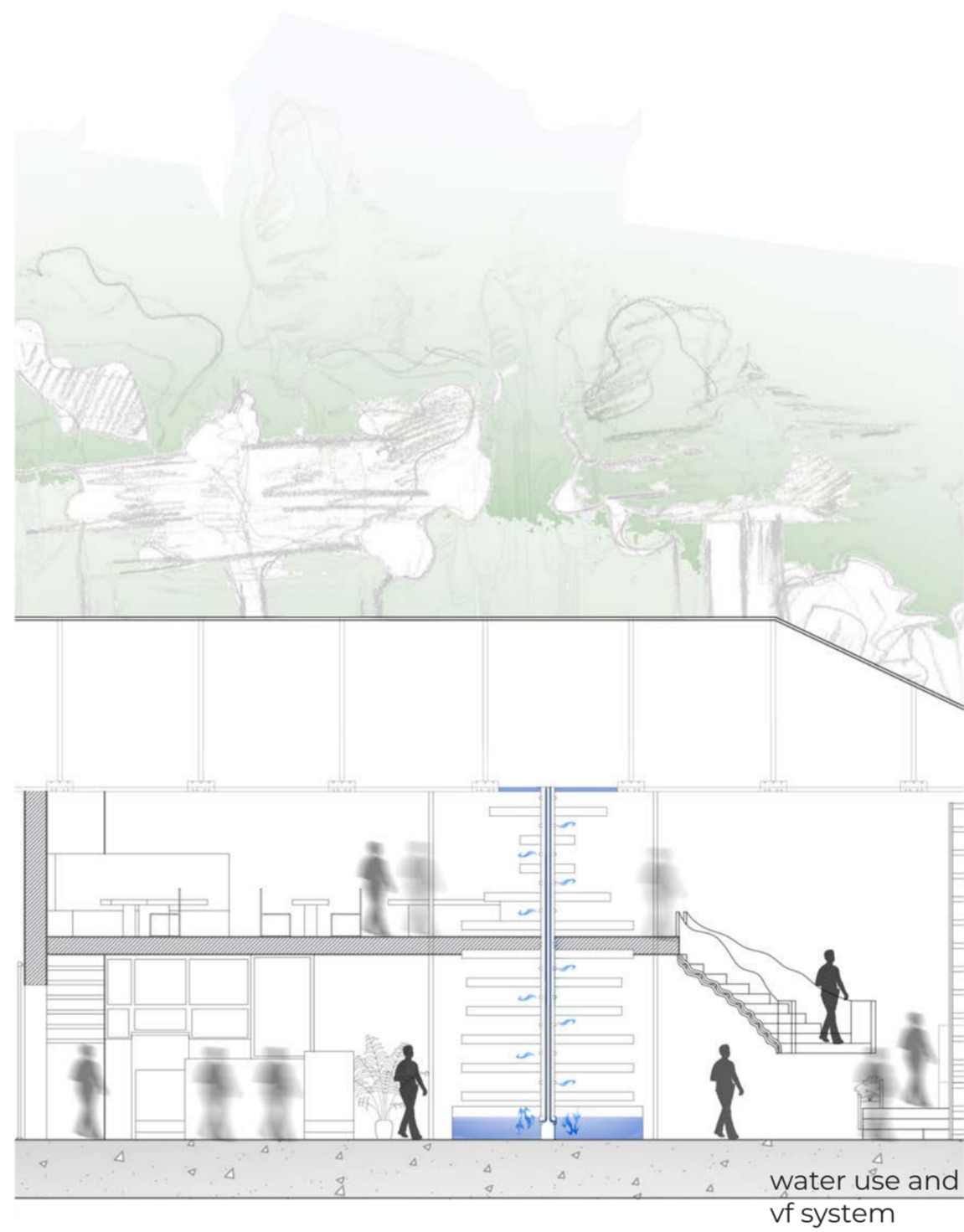
Images on the left are initial models to experiment the shape of the VF and the image down is a render to show a relatable result.



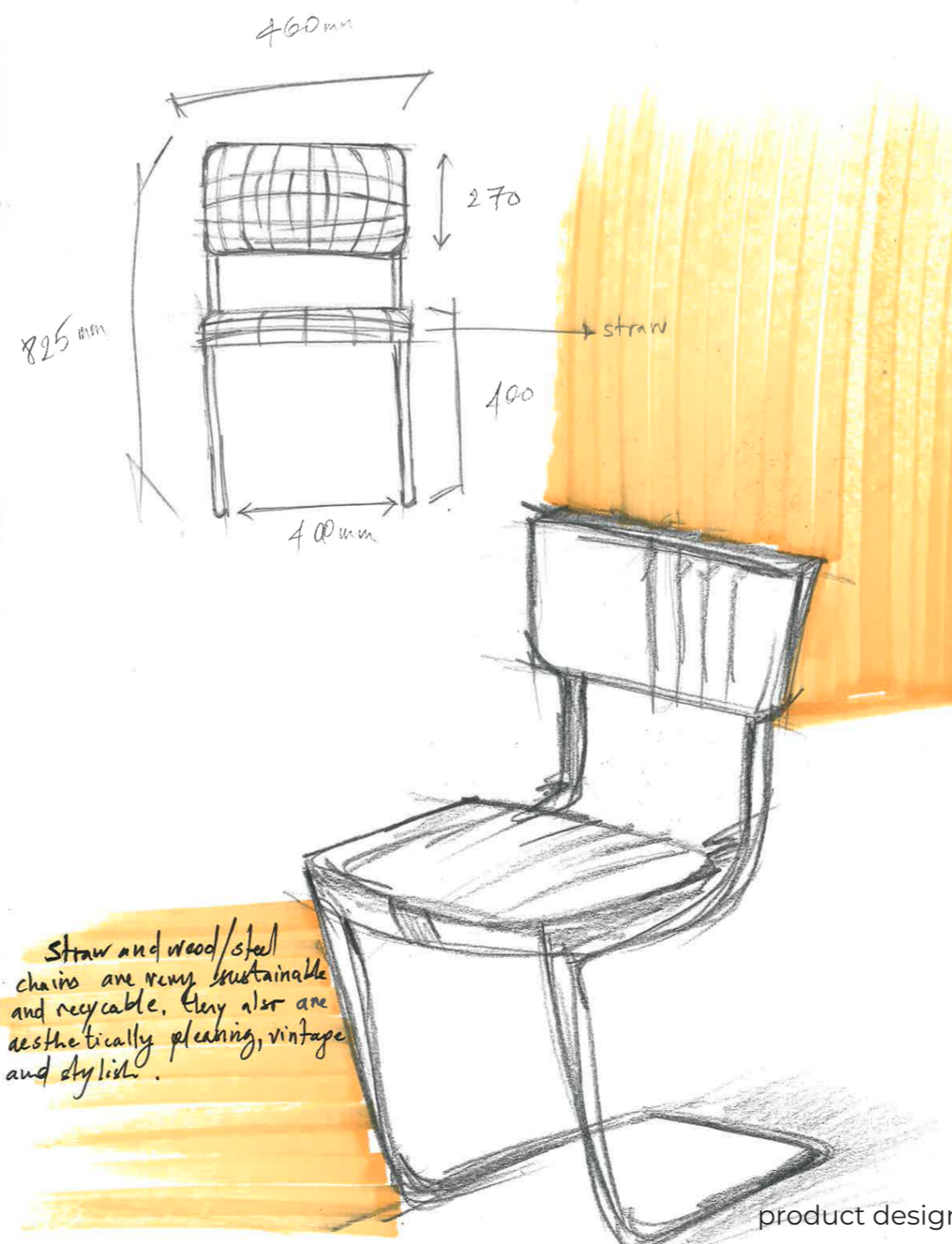
Sustainability and ecology



site analysis

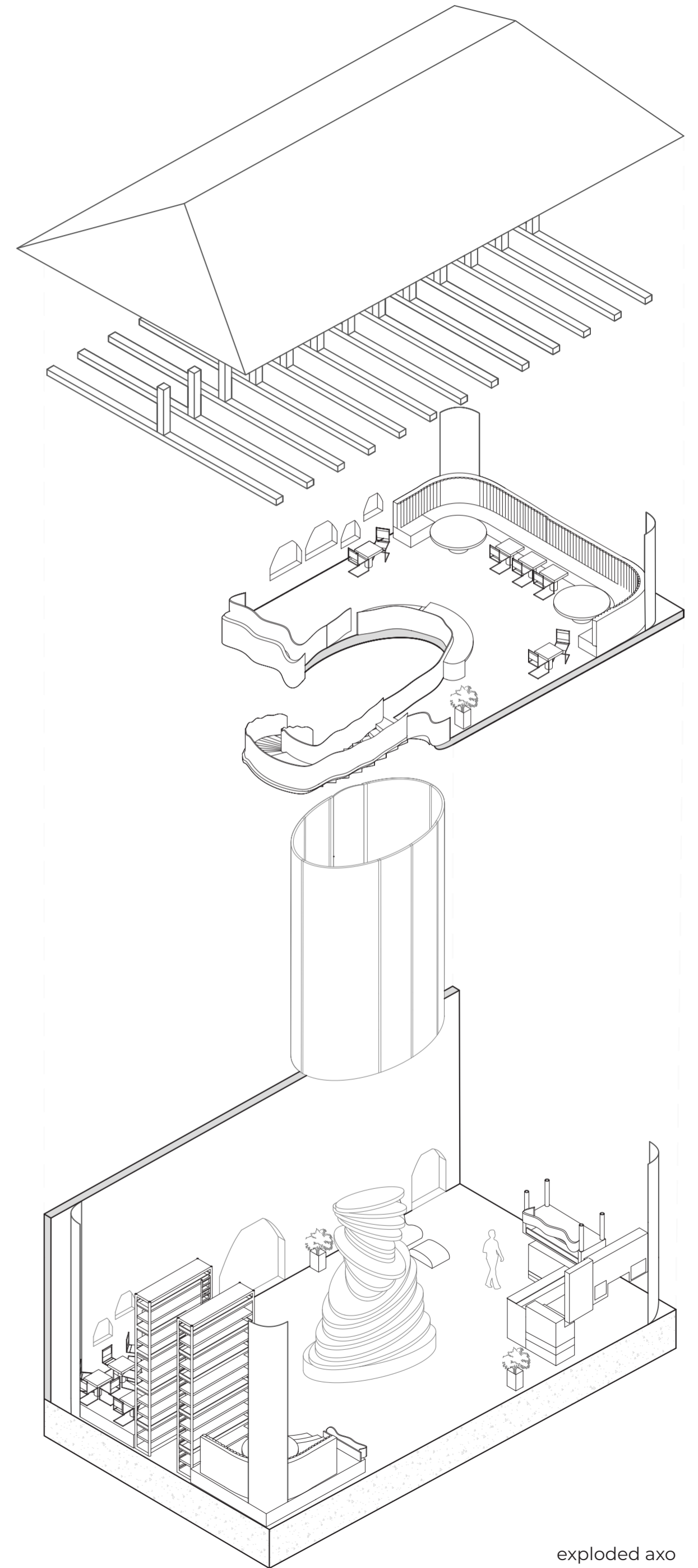


water use and vf system

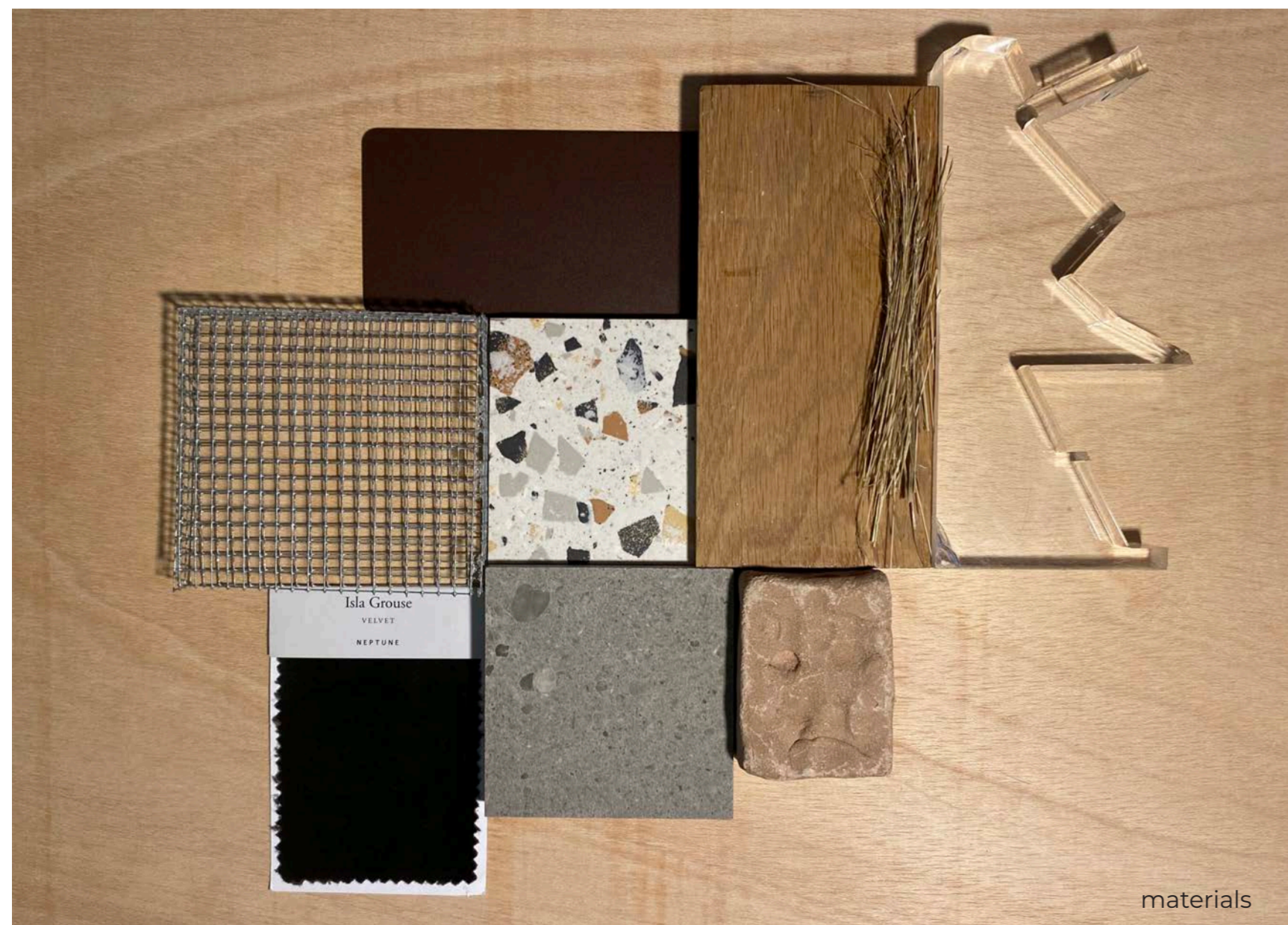


Straw and wood/steel chairs are very sustainable and recyclable. They also are aesthetically pleasing, vintage and stylish.

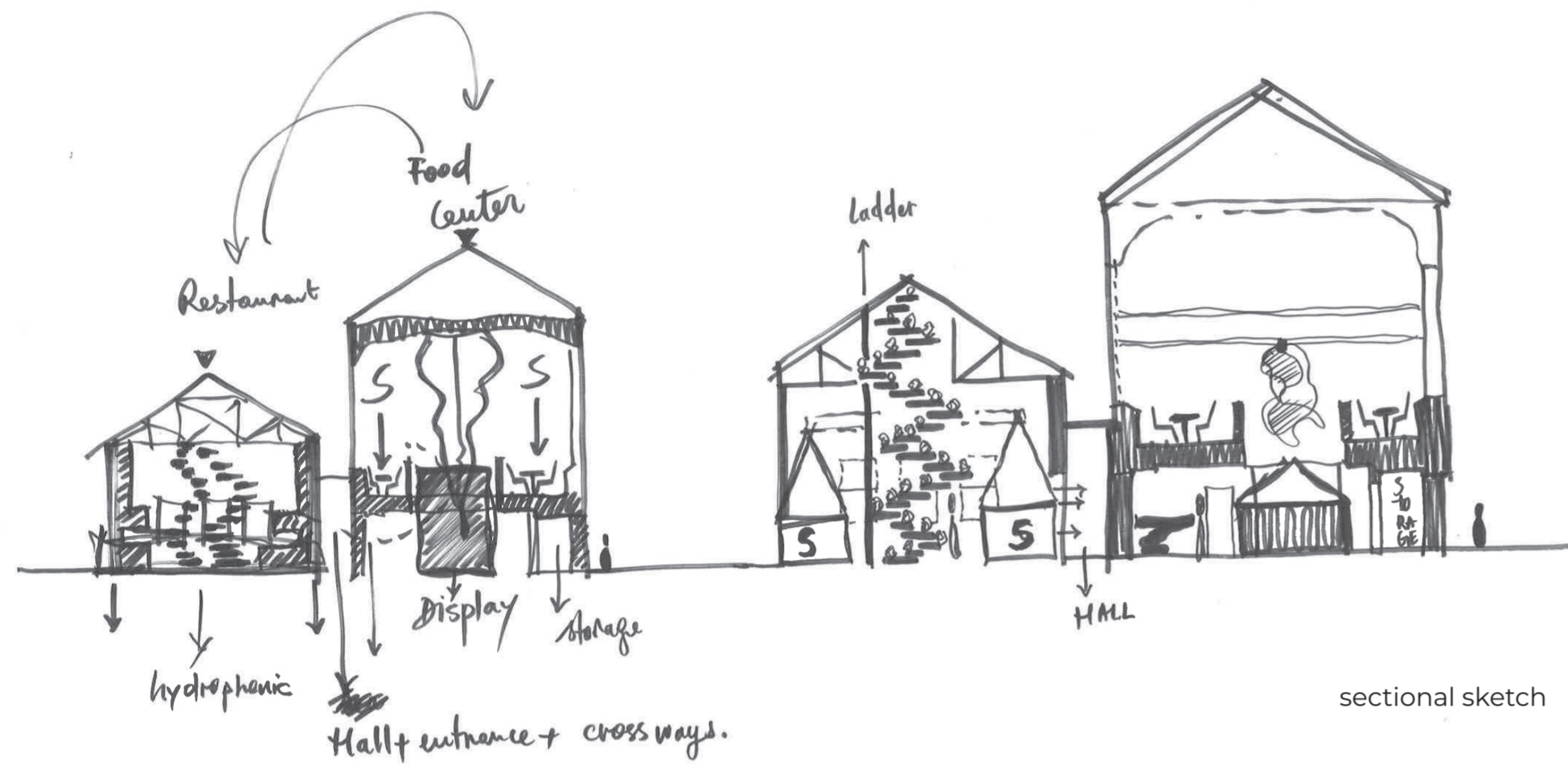
product design



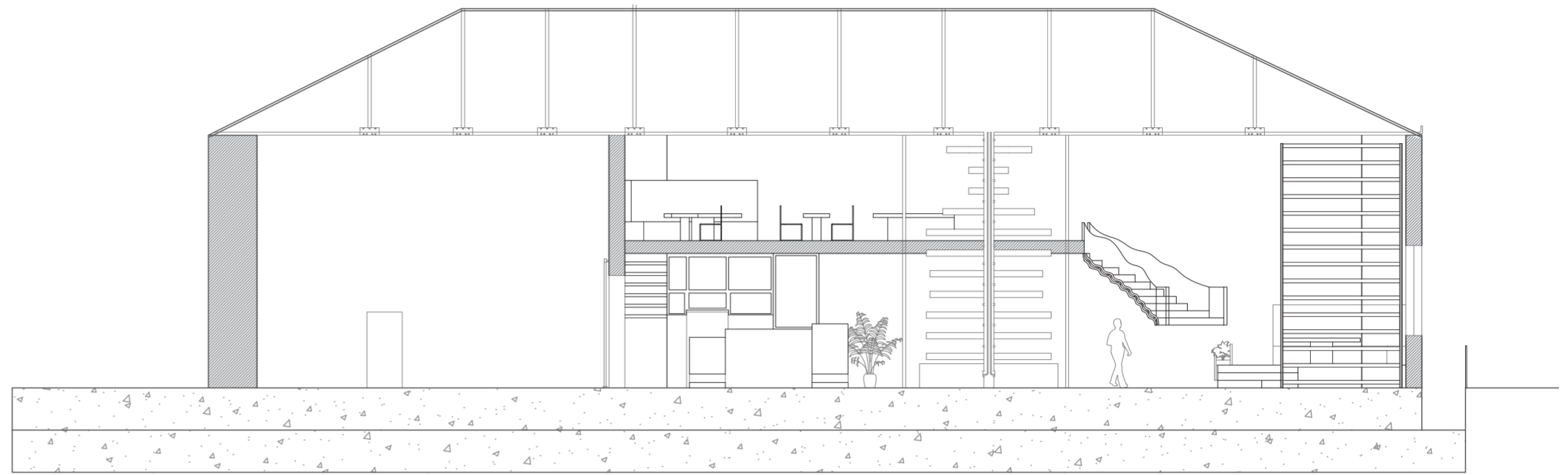
exploded axo



materials



sectional sketch



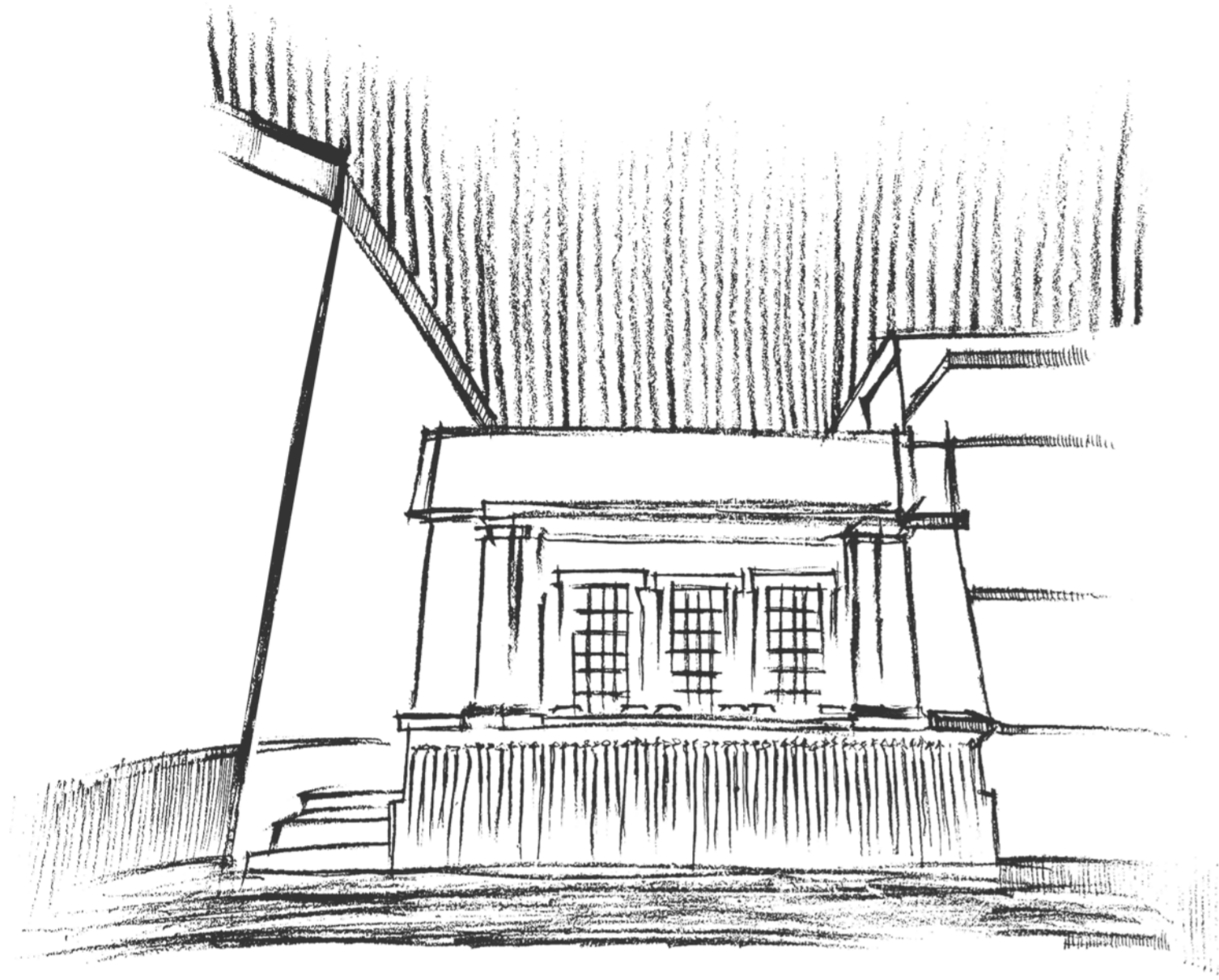
section AA



internal render

video link

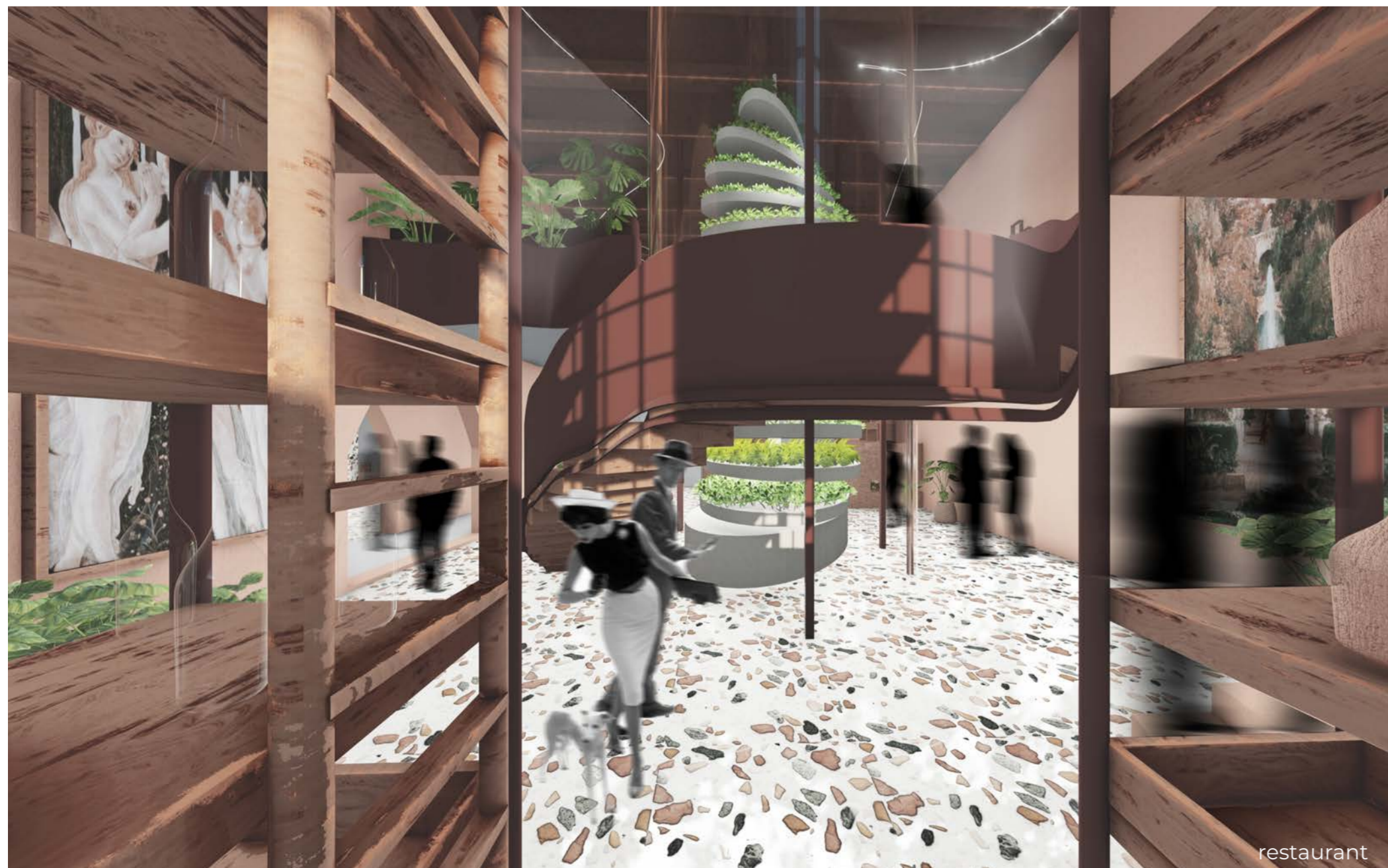
<https://www.youtube.com/watch?v=GG1JK3UDoe0>



site



food center



restaurant



mezzanine