

‘Dinner and a show’

The Client - Tramshed

Tramshed it is a theatre company and community arts hub based in the heart of Woolwich, South East London. The organisation offers arts programmes for young people and adults with learning difficulties, is home to a number of diverse community groups, as well as facilitating local artist development and career opportunities. The Tramshed has been open since 1973 and was originally called the GLYPT Greenwich & Lewisham Young People's Theatre which started life as part of the extraordinary vision of its founder, Ewan Hooper.

The Tramshed building was outdated and lacked space and was not easy to access. Out brief was to update this community asset so it could meet the needs of the current users in Woolwich.

Woolwich is an area which has a high percentage of social deprivation and gang violence. The Tramshed provides a much-needed alternative for the youth of the town and Bernardine Evaristo the first black women to win the Booker prize was a member of GLYPT as a child.

The Brief

Woolwich is an area of London which is undergoing a huge process of gentrification. The Tramshed is a community asset which needs to be celebrated and updated to meet the current and changing needs of the community. The planning and design were strongly influenced by the use of rammed earth as a sustainable material and the form of the roof developed from the use of this material.

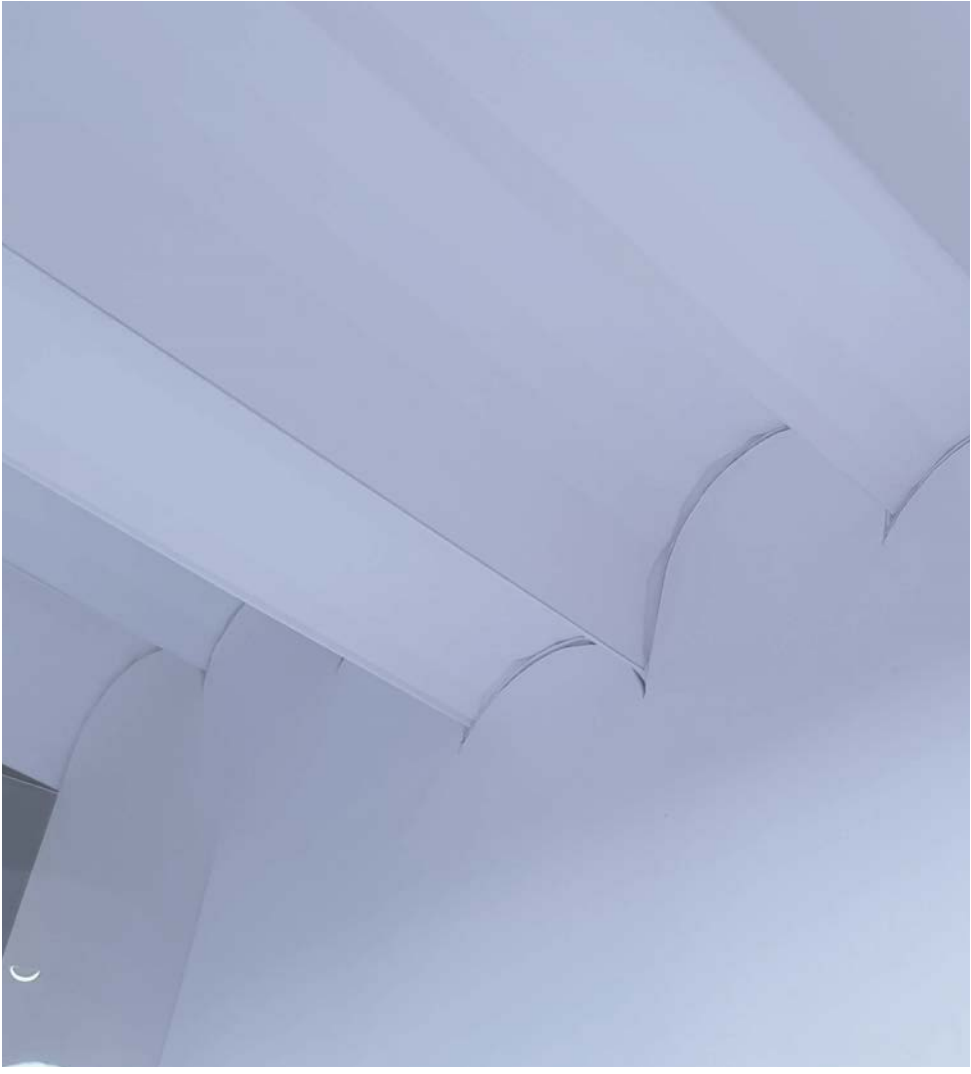
The building was originally a generating station to provide power for the local Tram system between 1916 and 1953. It has had many uses since then but has primarily been a place for gathering and entertainment. Considering the brief and through careful site analysis I could see it was necessary to maintain the structure that has now become a symbol of Woolwich. When developing the design concept, I wanted to retain as much of the existing building but also to develop a new design language using materials which are sustainable and also represent an architectural language which reflected the diverse cultures which make up the community of Woolwich.



View of stage with rammed wall backdrop



Auditorium



Roof detail

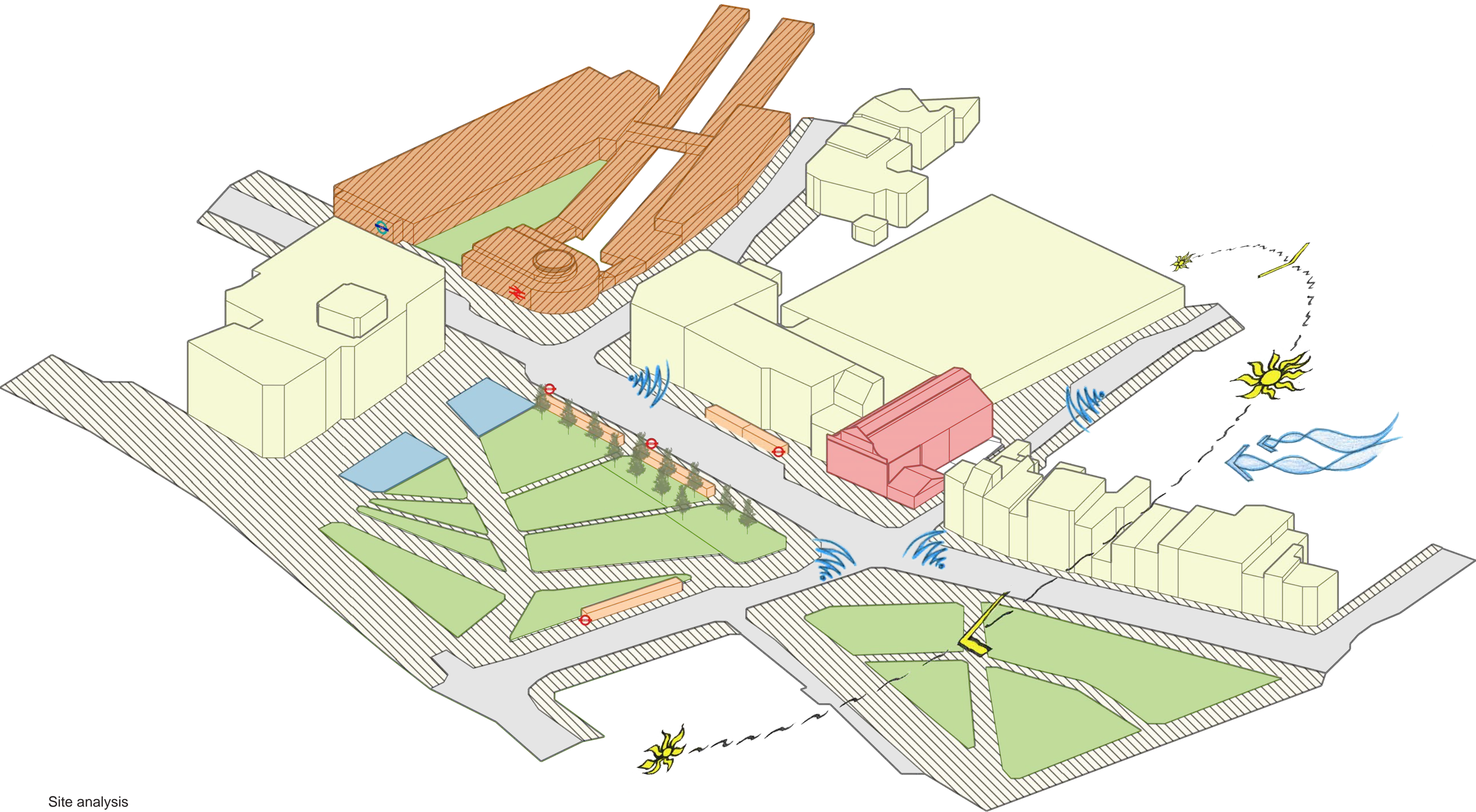


Audotiorium

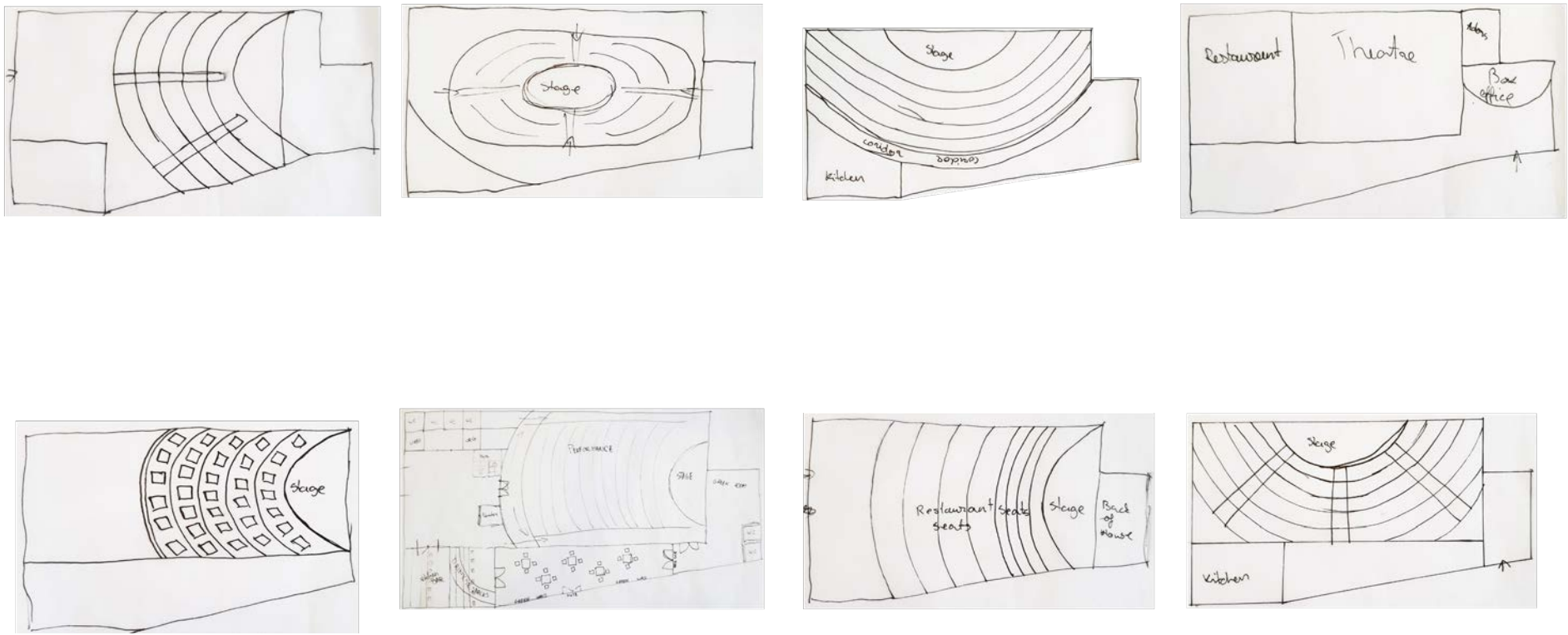


New wall

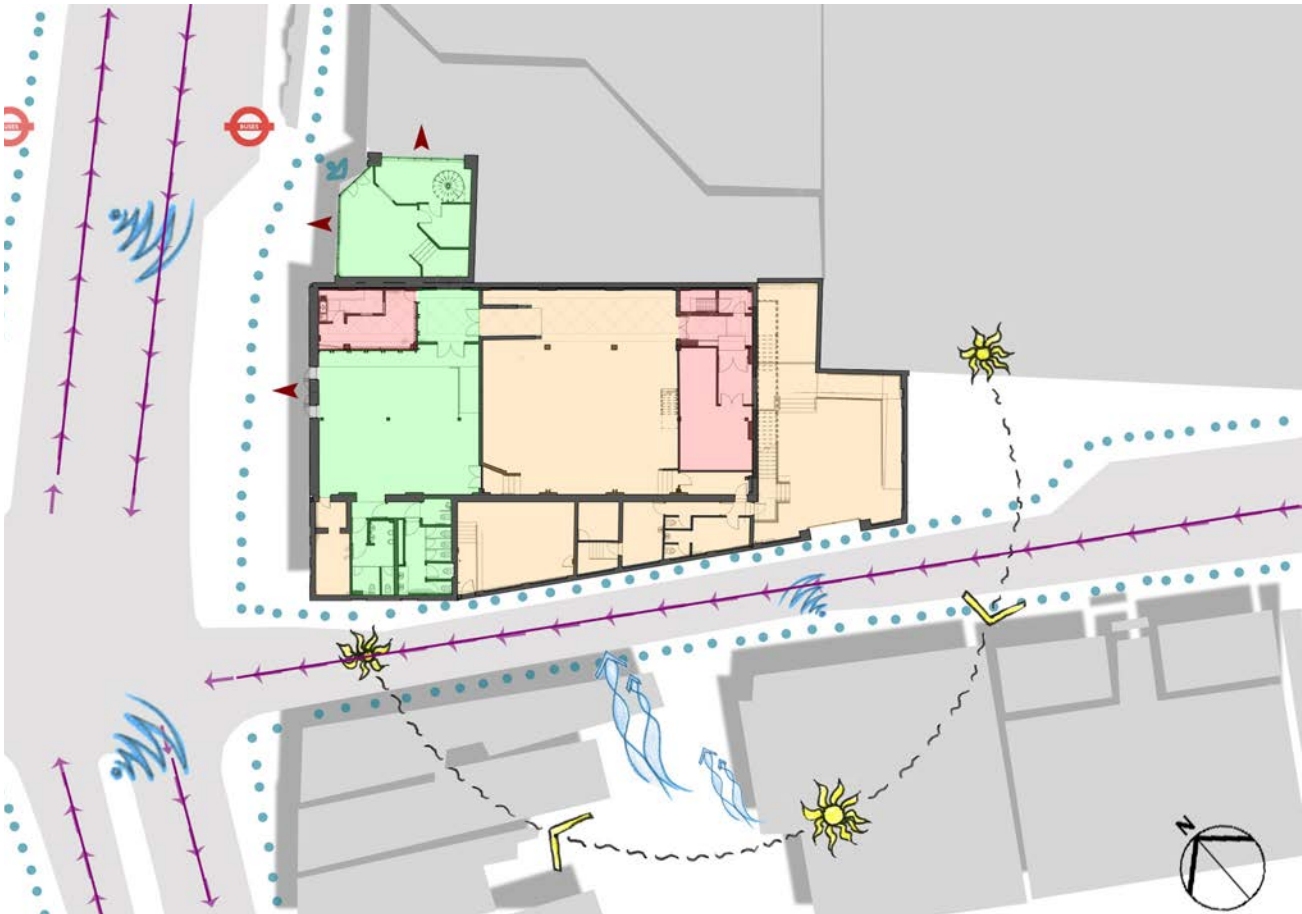




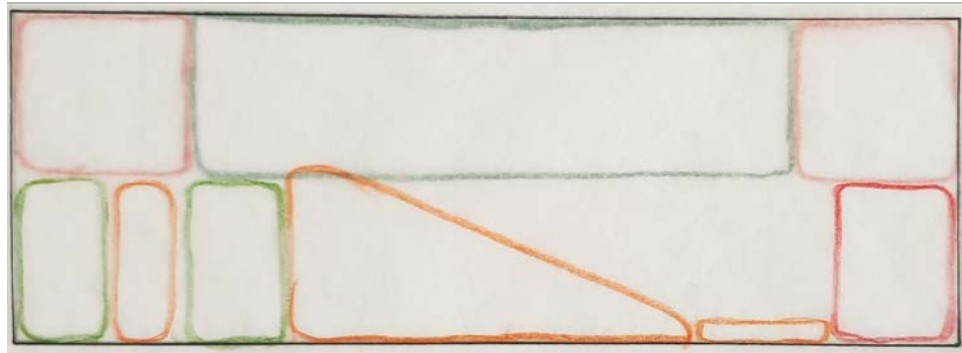
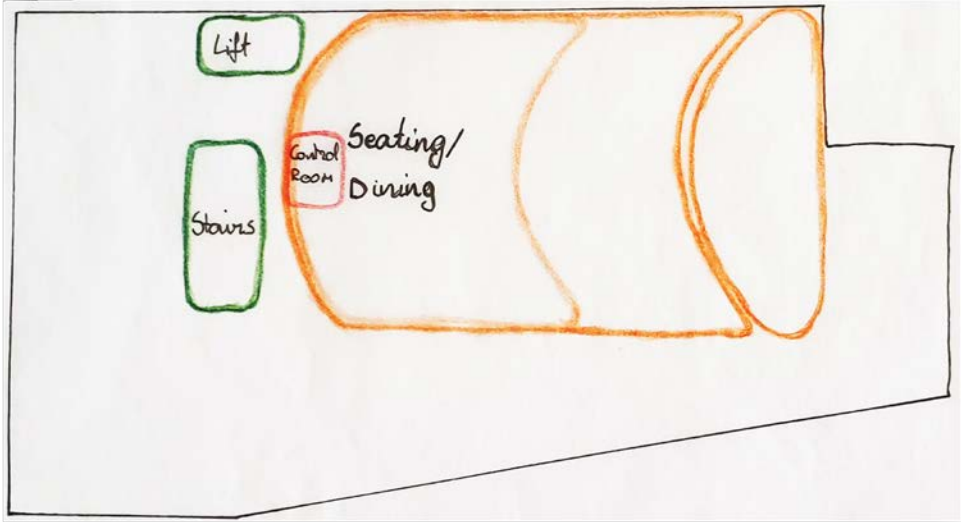
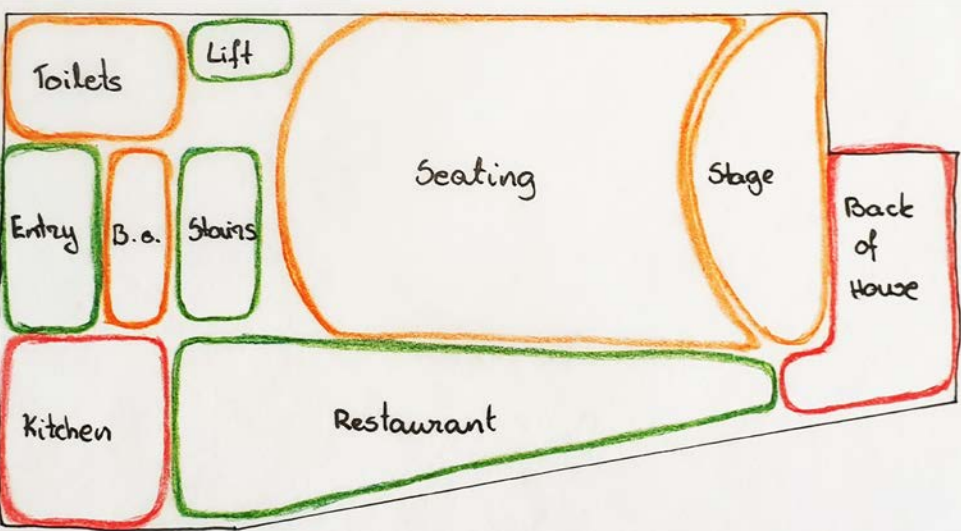
Site analysis



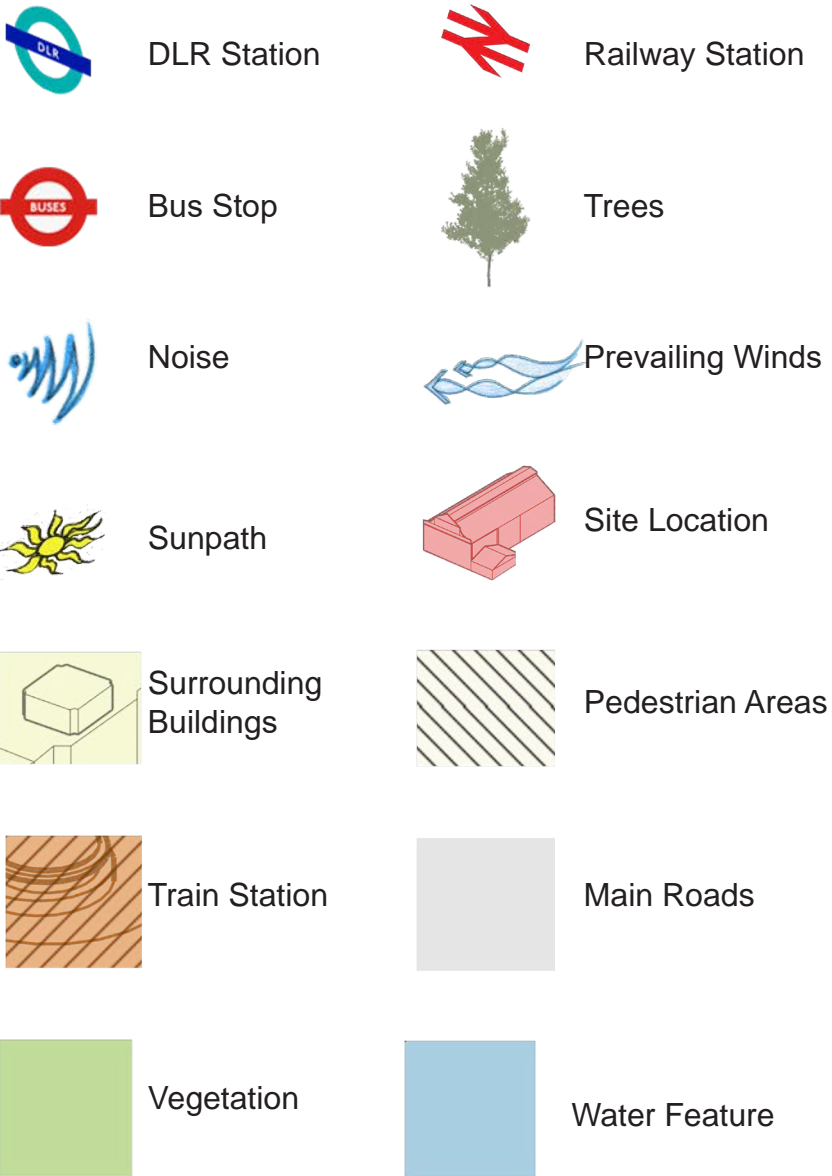
Theatre layout ideas



Spatial analysis



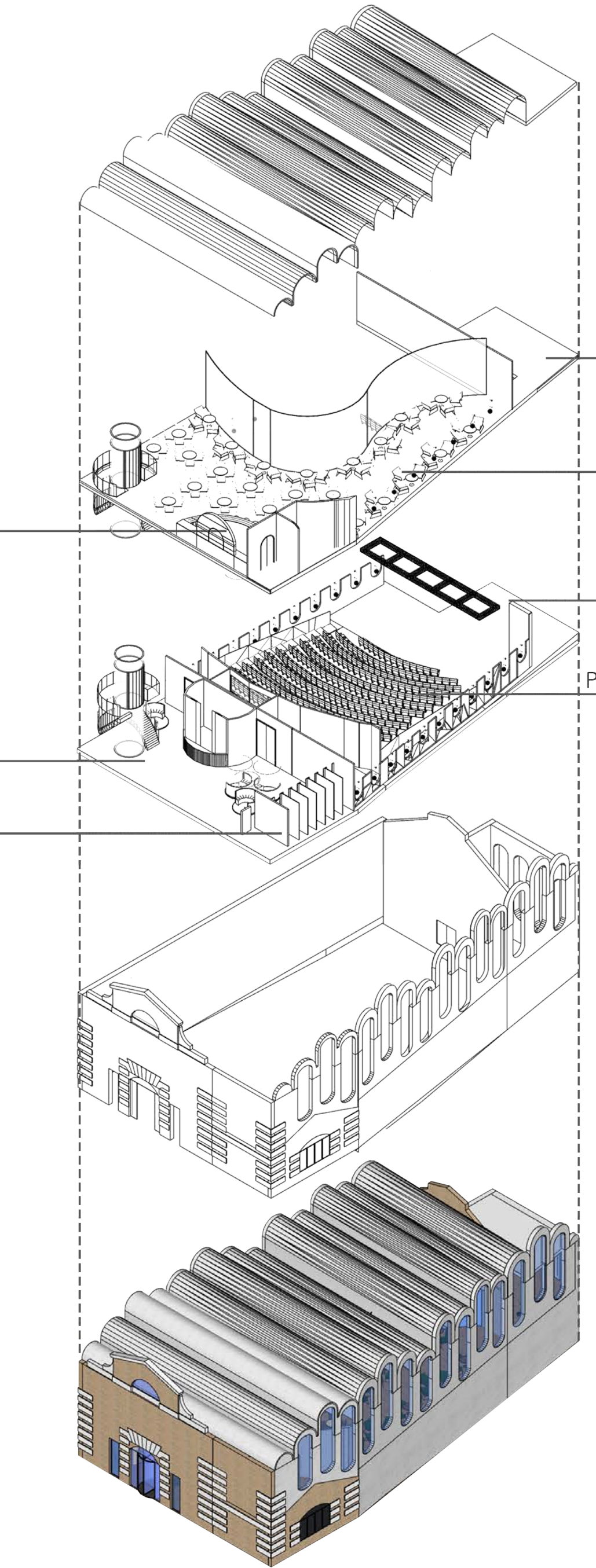
Theatre layout ideas



Site analysis key



Materiality and 3D model



Proposed exploded axonometric drawing



Material palette



3D Sectional model views



Collage

Key

1. Brass

Brass is a material that can be remolded and reused many times. It is also durable, which allows it to stay as is for many years without the need of replacement.

2. Rammed Earth

Using rammed earth is a sustainable way of building as it is made from compressed soil.

3. Glass

4. Terrazzo

To make terrazzo, small pieces of stone are used, that would alternatively be disposed. The pieces can be taken from used materials as it does not require newly resourced, large scale stone.

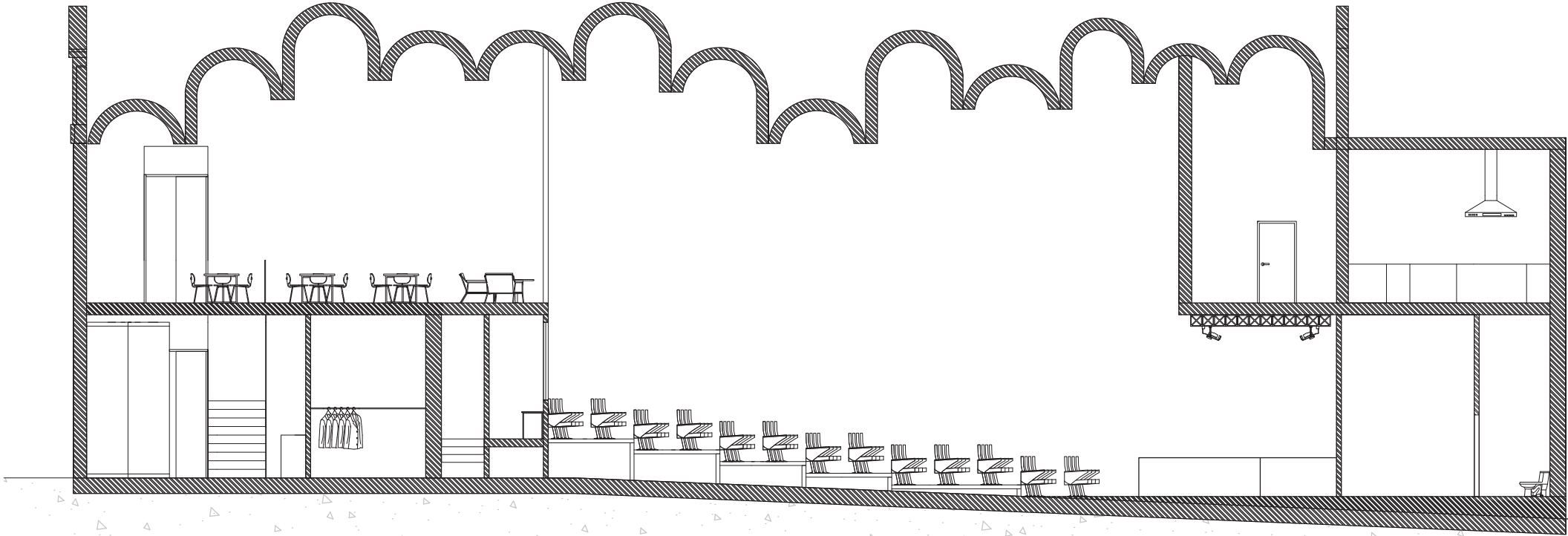
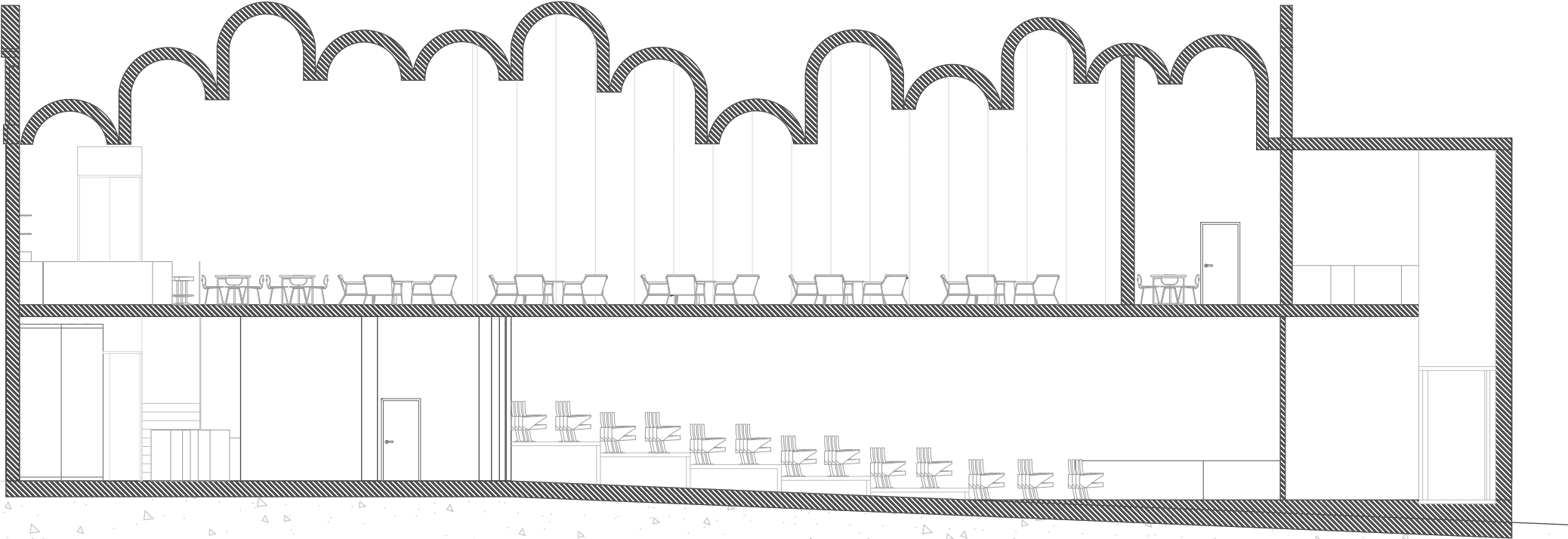
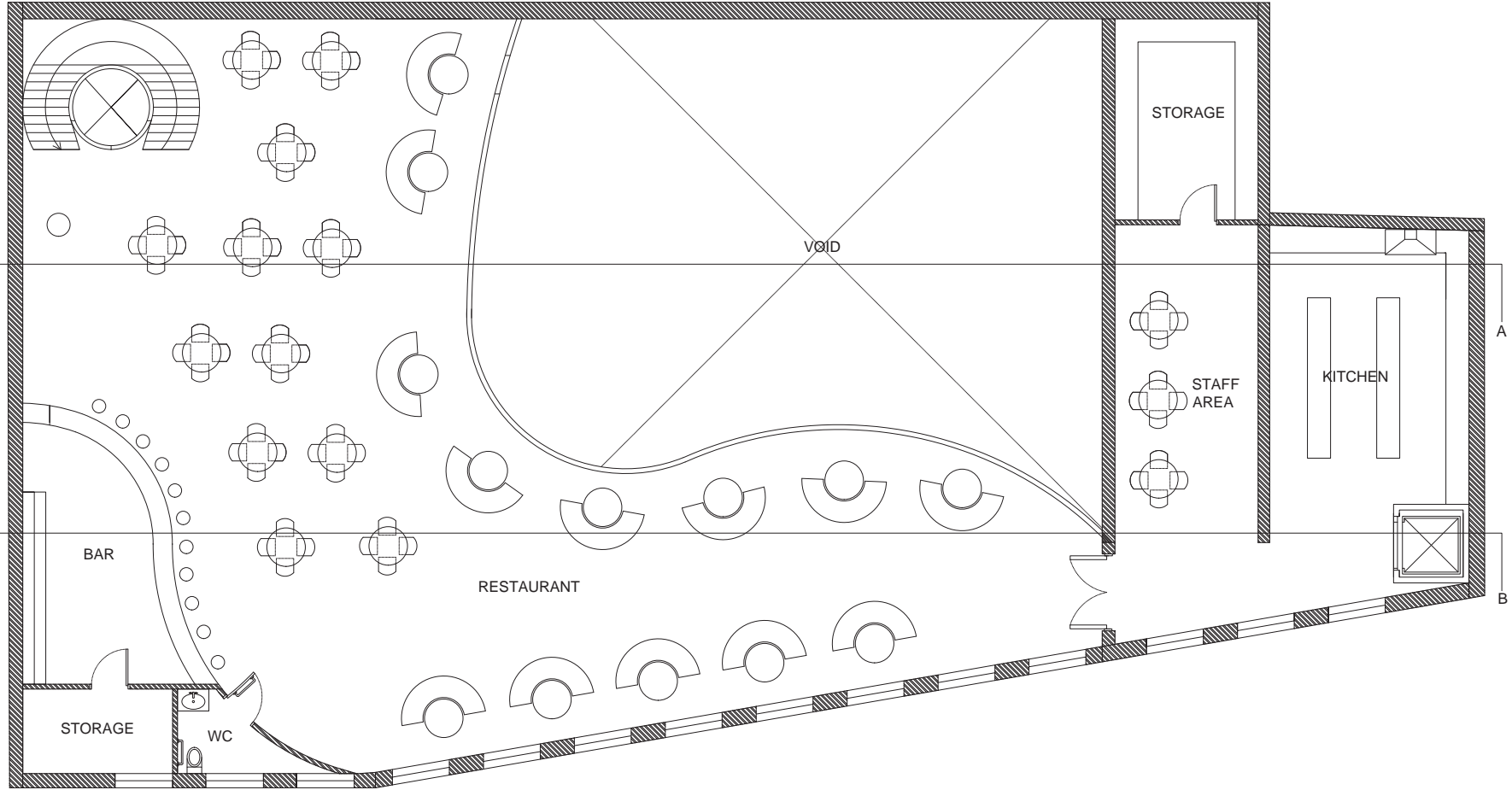
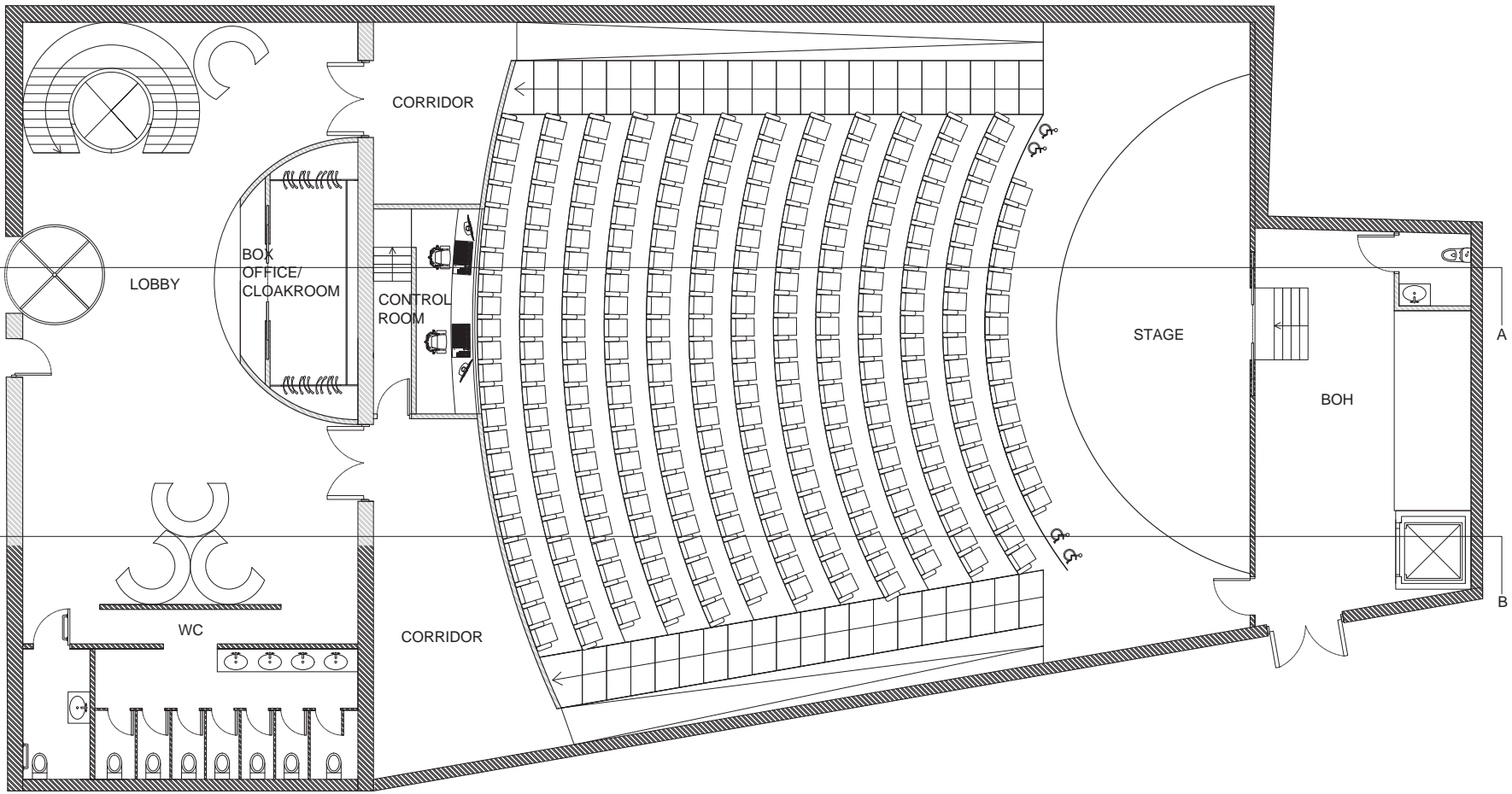
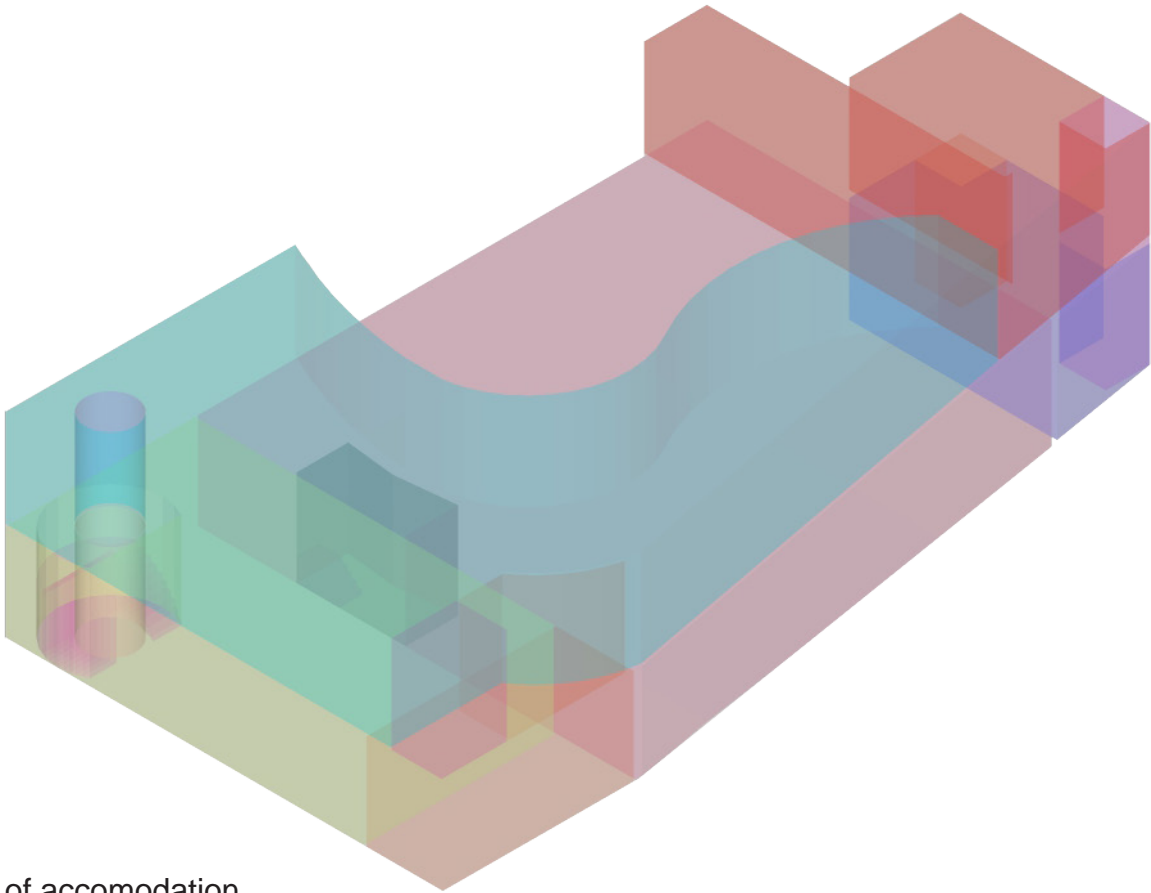
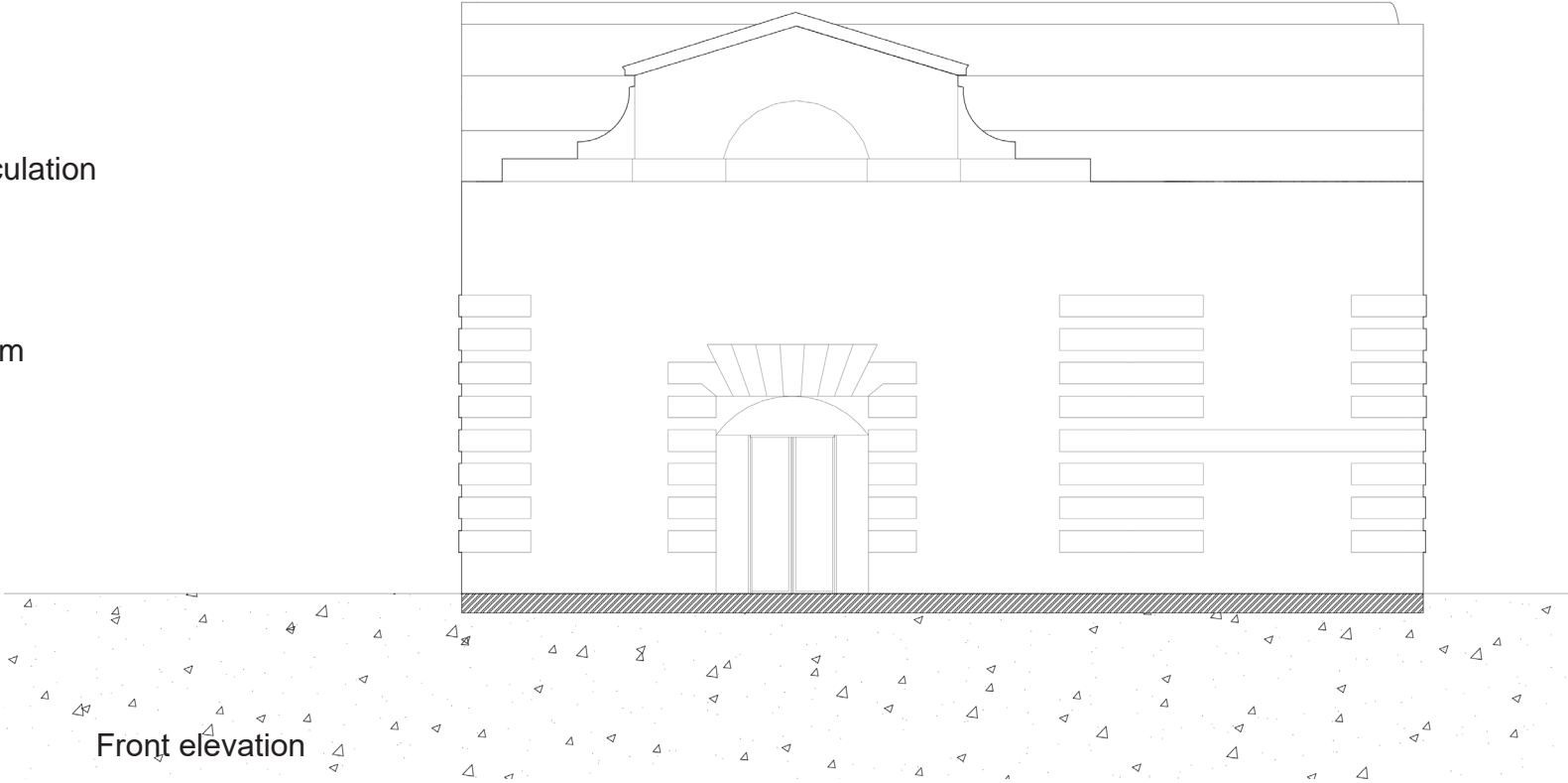
5. Mycelium Leather

Mycelium leather is made from the root structure of mushrooms and other fungi, making it renewable, cruelty free and more eco friendly leather alternative.



Spatial Diagrams

- Lobby
- Vertical circulation
- Control room
- Auditorium
- WC
- Back room
- Restaurant/Bar
- Storage room
- Kitchen







Front elevation



Auditorium and stage as viewed from the restaurant



Restaurant and bar as viewed from the kitchen



Bar