

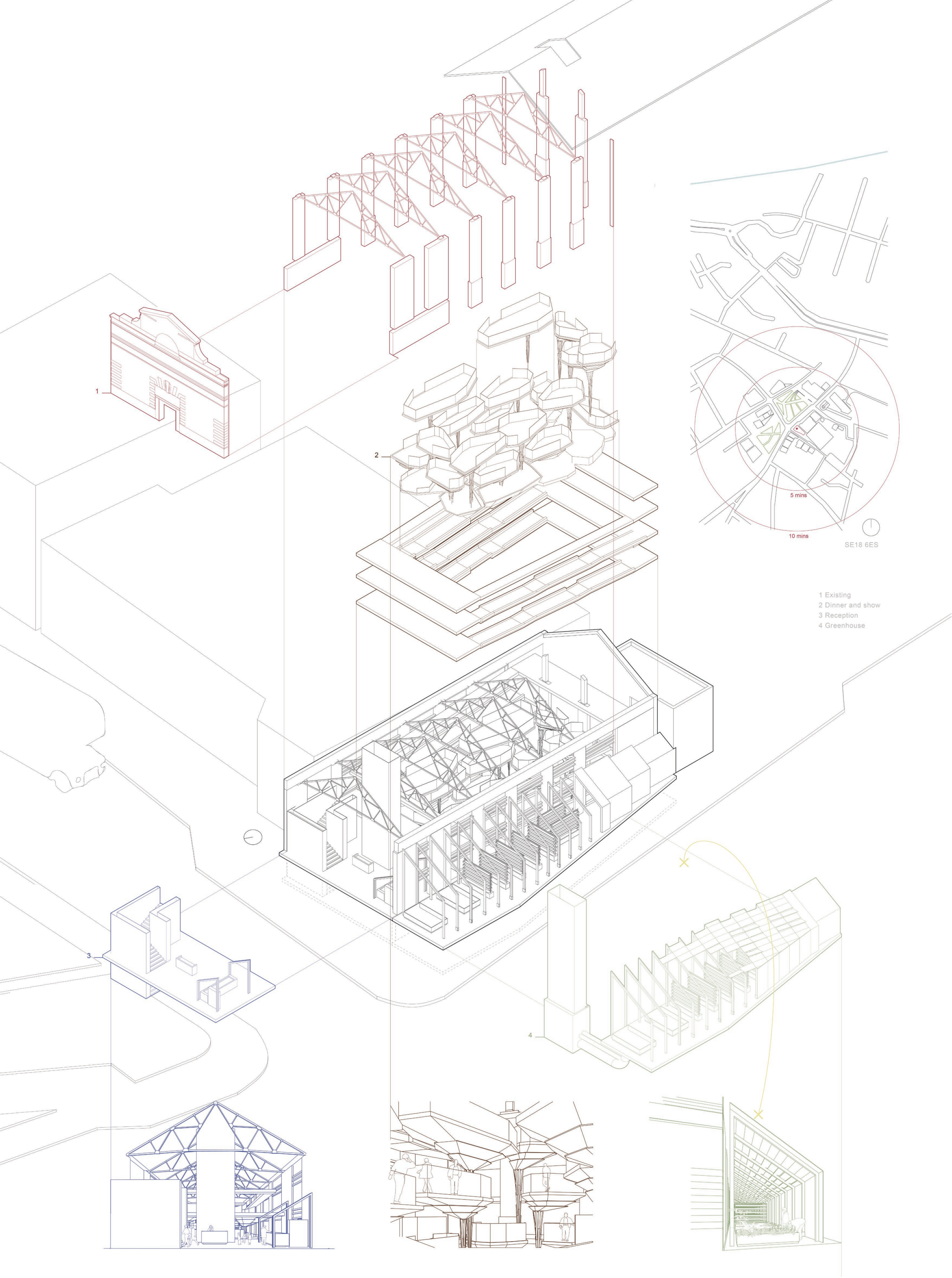
DINNER AND SHOW  
ALEX WONG

'WOOLWICH IS GAIN 5000 HOMES IN THE COMING YEARS'  
UNDOUBTEDLY ITS AN AREA WHERE THE OLD MEETS  
NEW, WITH HER RICH HISTORICAL BACKGROUND SINCE  
THE HENRY THE 8TH. THERE IS NO DOUBT THAT THE  
NEW AND OLD GENERATION HAS BEEN ENERGETIC,  
FROM ARCHITECTURE, PARKS, AND DOCKSIDE.

THE TRANSPORTATION IN THE SITE HAS BEEN MATURELY  
DEVELOPED, WITHIN 5 MINUTES WALK TO THE DLR  
AND TUBE STATION AND FUTURE CROSSRAIL AND A206  
AND A205 HIGHWAY GIVE AN OPTION FOR THE DRIVER.

CLEARLY, THE HISTORY TRANSFORM HAS BEEN  
BROUGHT OUT A NEW LOOK OF THE AREA. BEFORE  
APPROACHING THE DESIGN, QUESTIONING THE AREA  
HERSELF, 'GENTRIFICATION' WOULD BE THE WORD  
TO START. AND SO, BY ASKING HOW SHOULD WE  
CONTINUE THE CULTURE AND ADOPT WITH MODERN  
CITIES? HOW TO PROTECT THE ORIGIN? BY ADOPTING  
A NEW DESIGN, COULD IT BE NEVER WEED OUT?

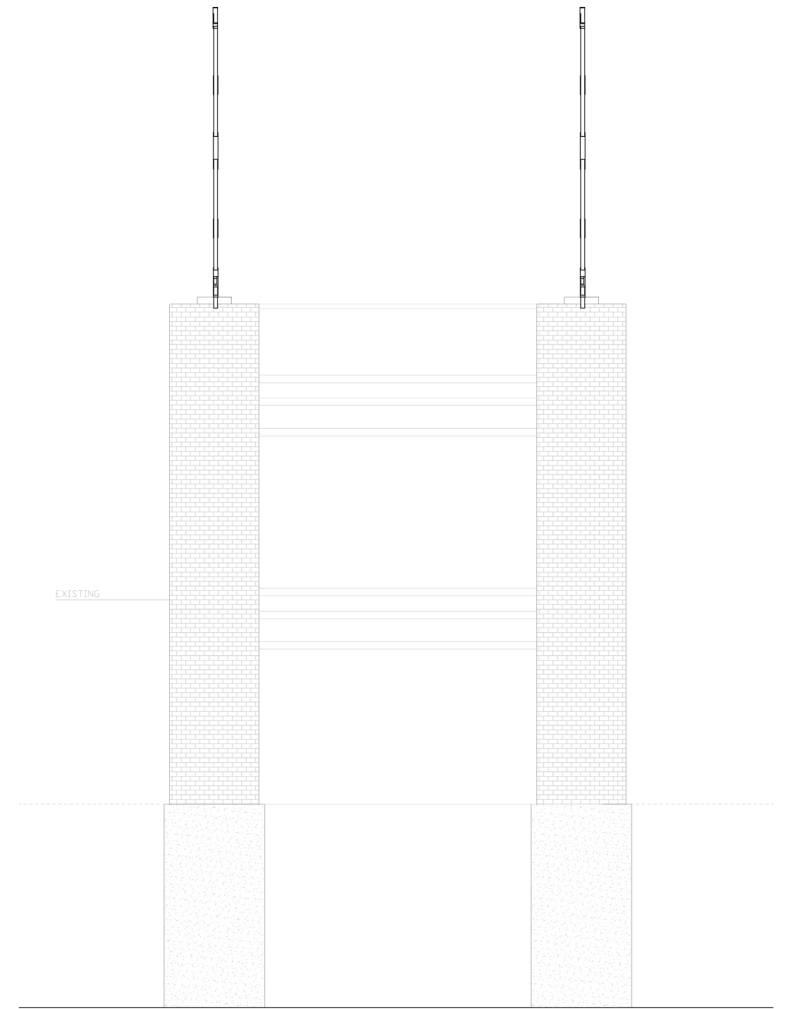
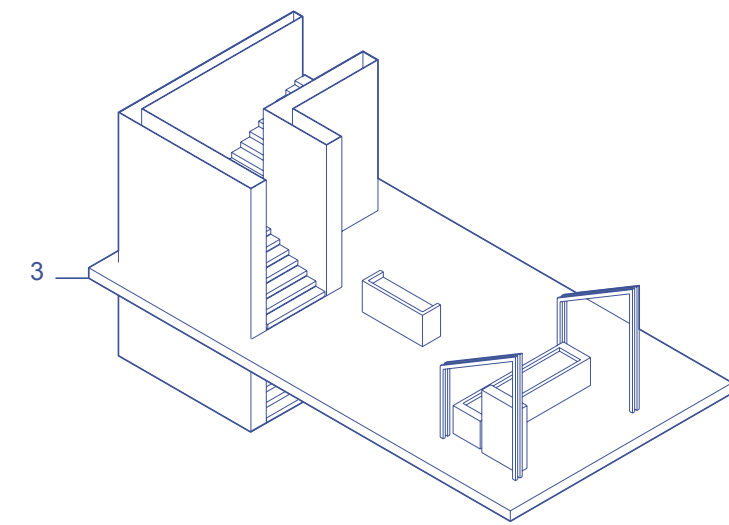
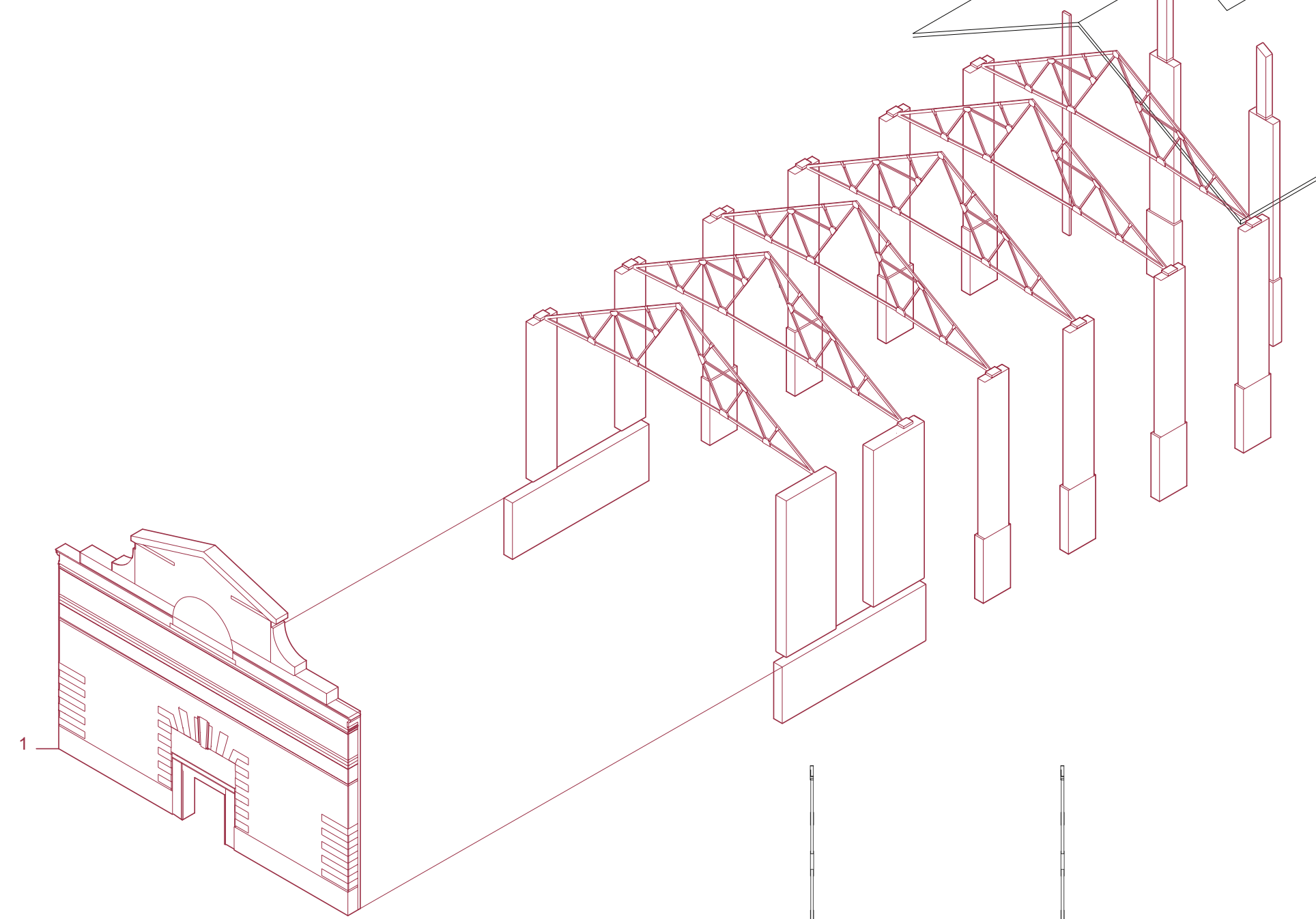
IN THE CONCEPTION, THE THEATRE SEPARATED INTO  
THREE ZONES OF ACCOMMODATION, REPRESENTING  
ADAPTABLE REUSE, SUSTAINABILITY AND ENTERTAINMENT,  
WITH ITS HISTORY OF THE SITE FROM THE 1920S  
AFTER THE 2ND THE SECOND INDUSTRIAL REVOLUTION  
IN 1870 WAS THE TRANSITION OF ELECTRICITY AND  
MASS PRODUCTION. SEEKS TO THE QUESTIONING  
OF 'THE TYPOLOGY OF SUSTAINABLE TRANSPORT'  
THROUGH INHERITING TO THE NEXT GENERATION.







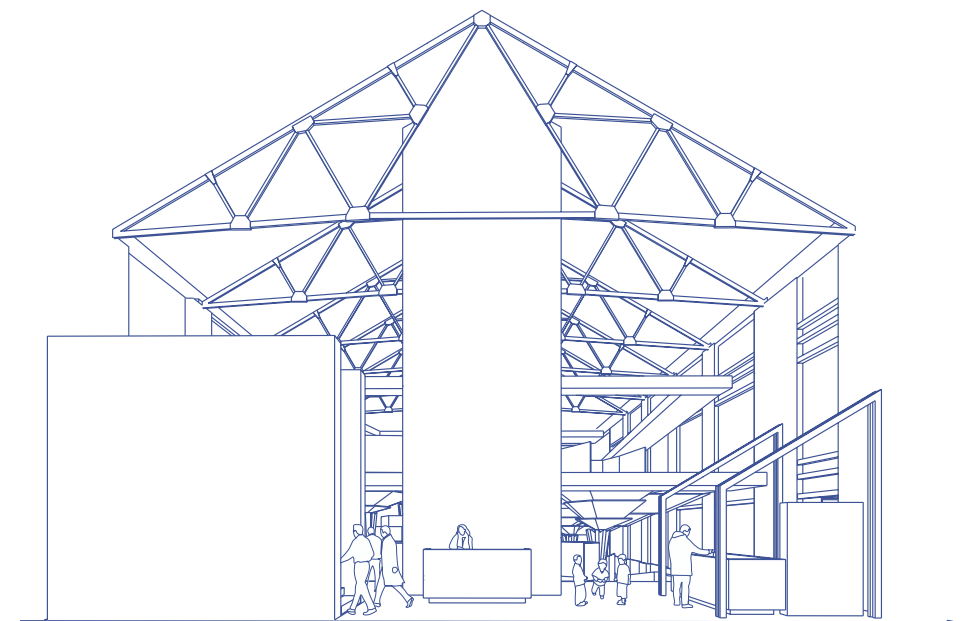
SITE SE18 6ES



#### ADAPTABLE REUSE

'THE VALUE OF A HERITAGE ASSET TO THIS AND FUTURE GENERATIONS BECAUSE OF ITS HERITAGE INTEREST. THE INTEREST MAY BE ARCHAEOLOGICAL, ARCHITECTURAL, ARTISTIC OR HISTORIC. SIGNIFICANCE DERIVES NOT ONLY FROM A HERITAGE ASSET'S PHYSICAL PRESENCE BUT ALSO FROM ITS SETTING...' (DCLG 2019, P71).

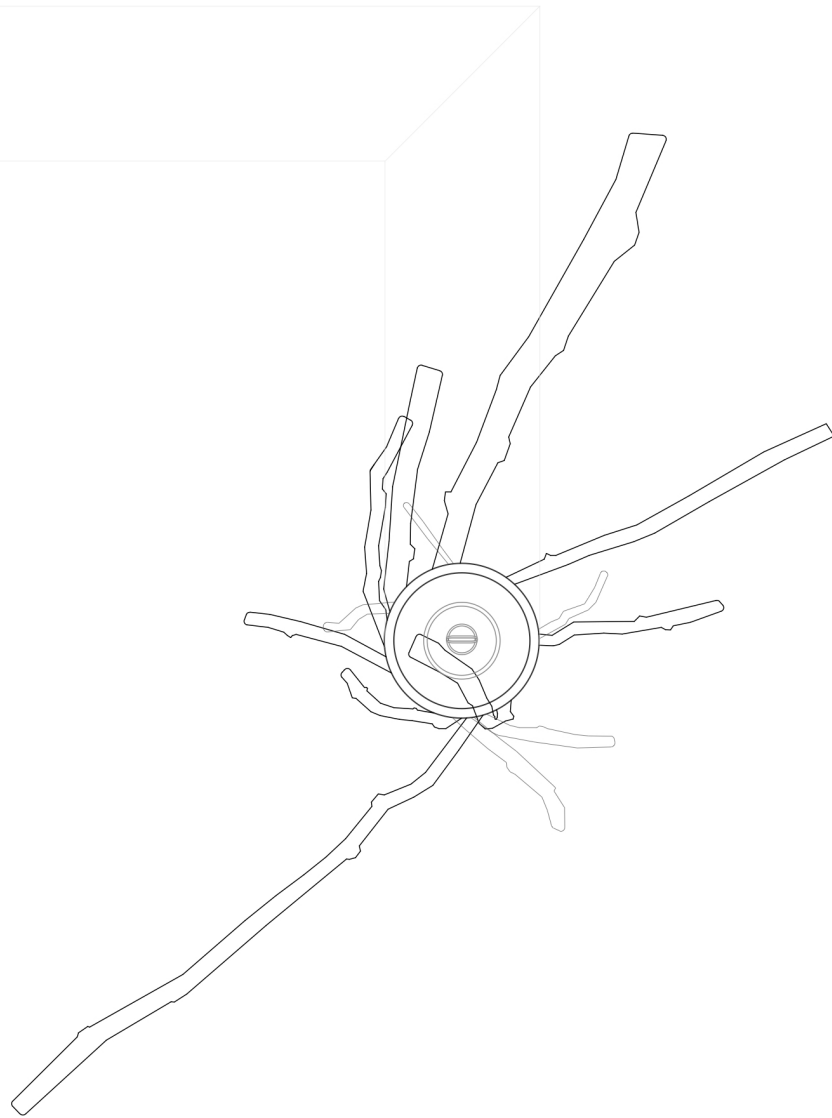
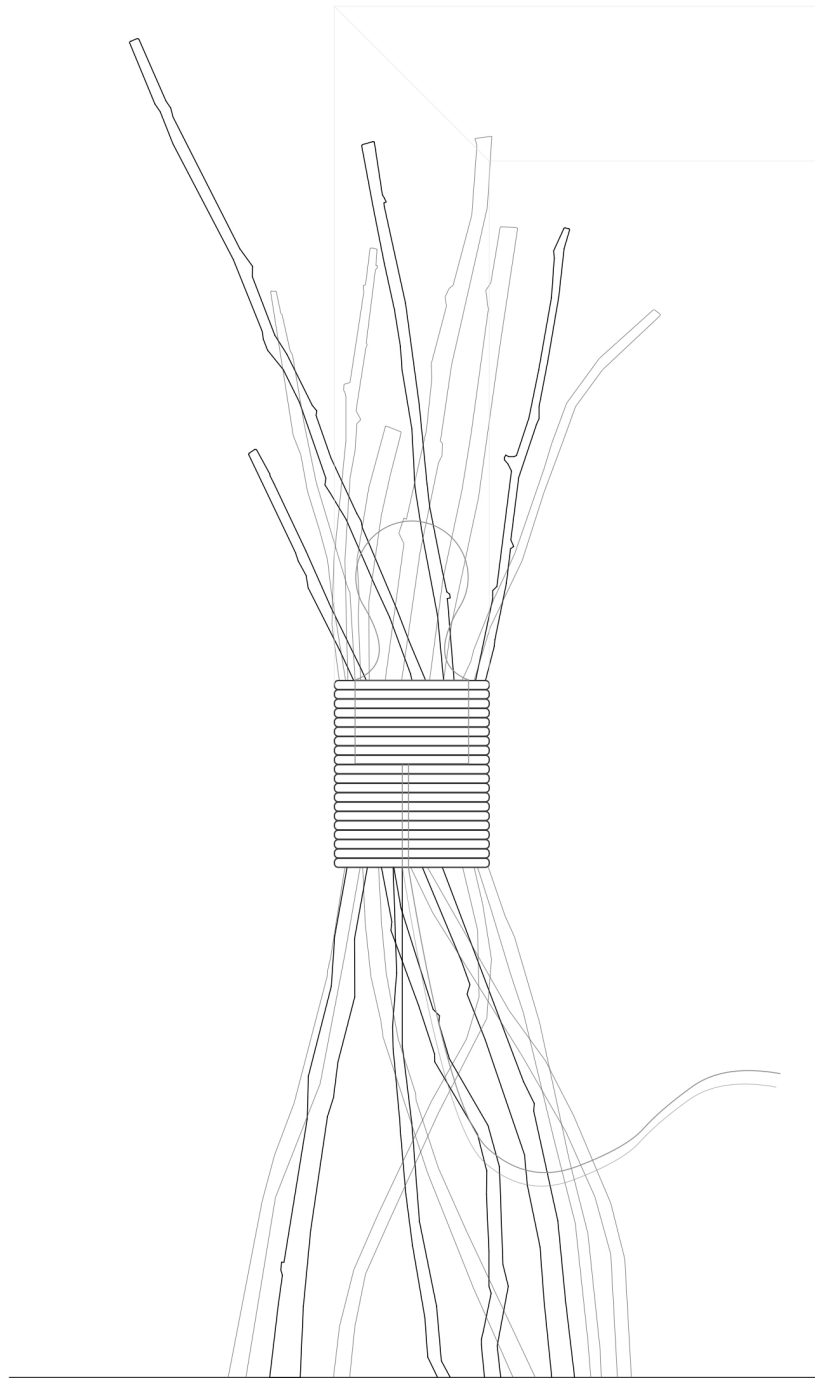
LET THE BUILDING SPEAK THE HISTORY BY ITSELF . REMAINING THE EXISTING STRUCTURE AND THE BRICK COLUMN, DISPLAYING THE TRACES OF TIMES. ENCASED THE NEW ELEMENTS IN CONCRETE, HOLDING UP THE EXISTING BRICK COLUMN







1. TIMBER  
2. RECYCLE WOOD  
3. CONCRETE

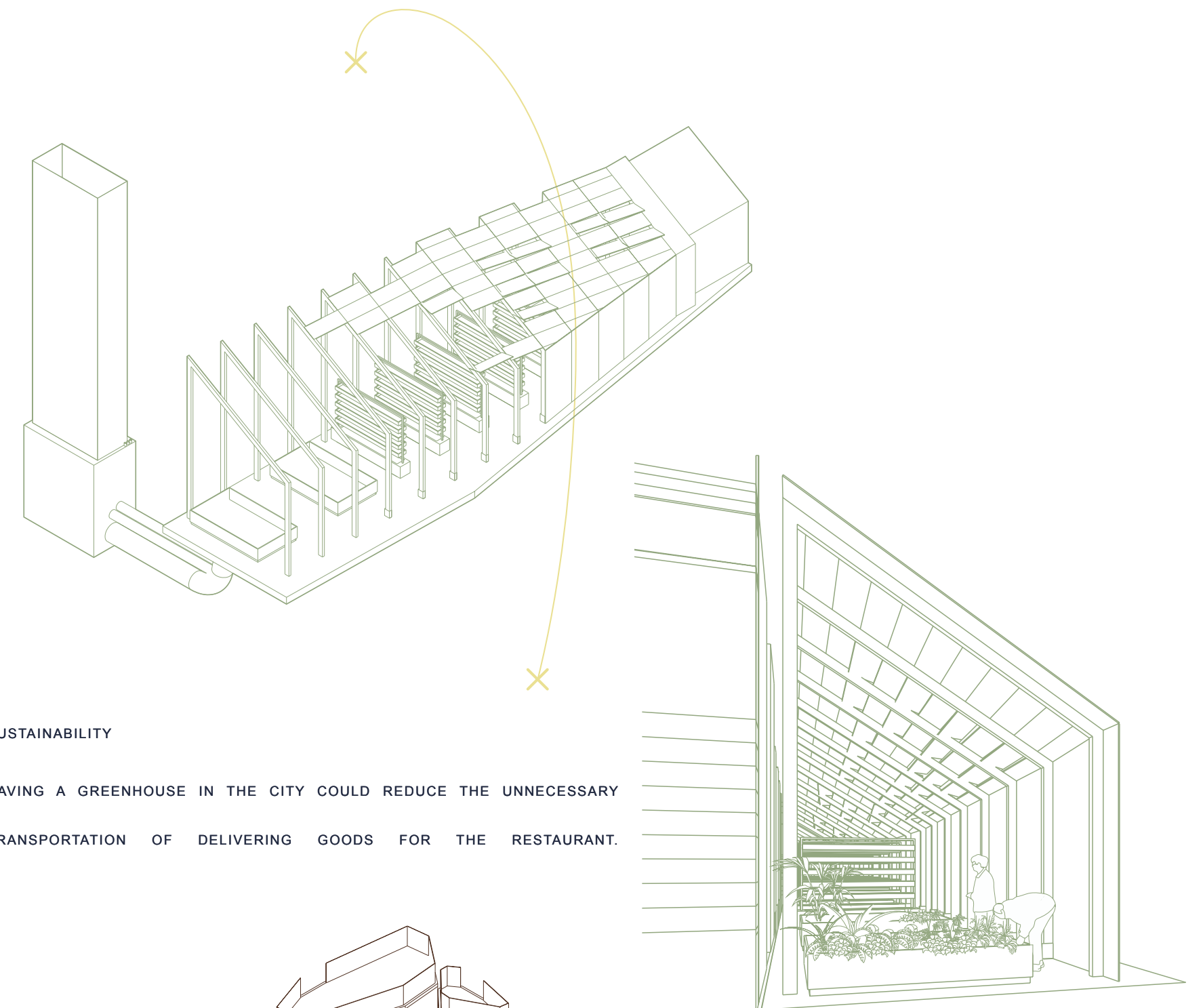


1:1 LAMP PROTOTYPE

THE IDEAS IS TO DESIGN A SIMPLE MANUFACT PRODUCT JUST WITH A BULB AND COLOUR PAINT. I AM EXPERIMENTING REUSABLE MATERIALS SUCH AS FOUND BRANCHES TO CREATED A SENS OF WARM FIREPLACE.

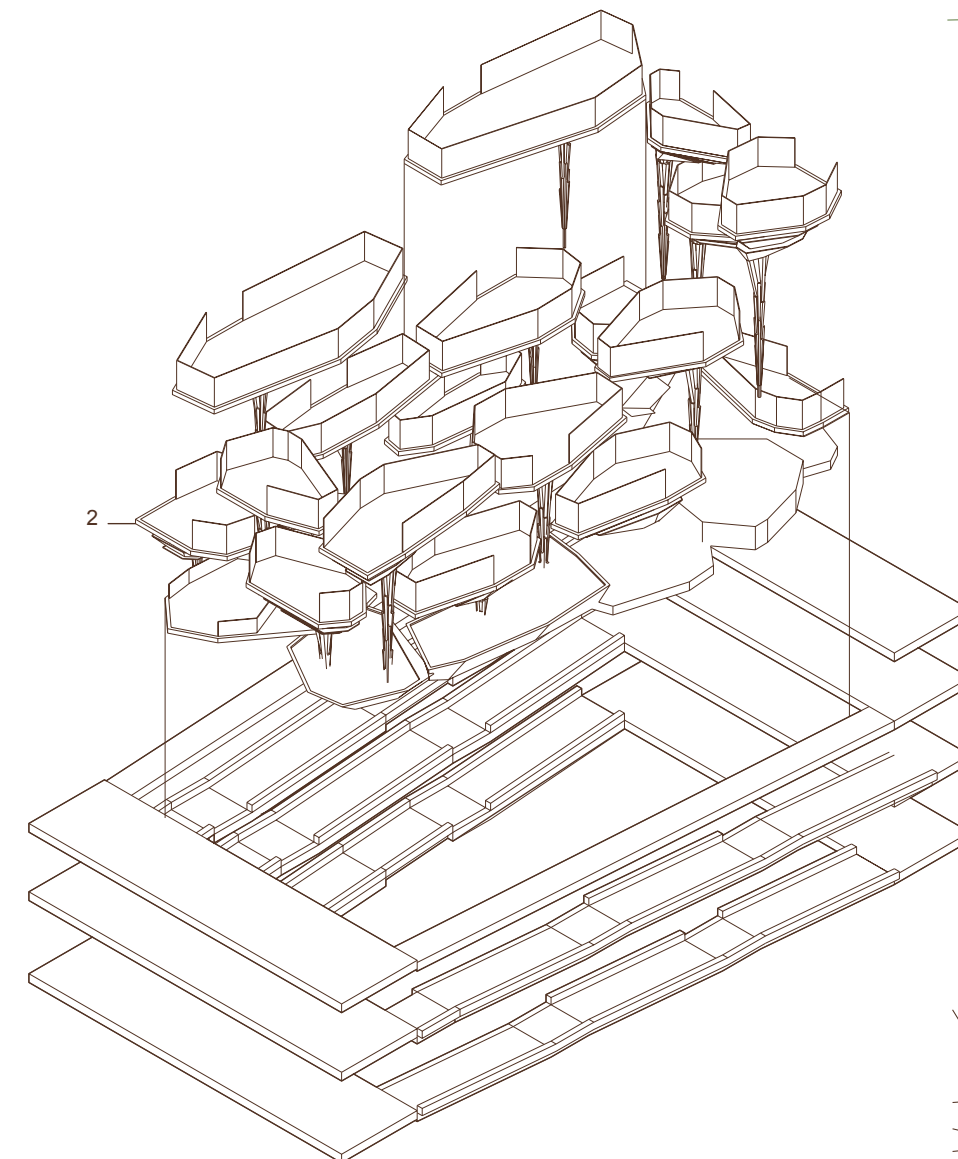






#### SUSTAINABILITY

HAVING A GREENHOUSE IN THE CITY COULD REDUCE THE UNNECESSARY  
TRANSPORTATION OF DELIVERING GOODS FOR THE RESTAURANT.



#### ENTERTAINMENT - DINNER AND SHOW

COMBINING WITH DINNER AND SHOW AT THE SAME AREA. EACH POD  
HOLDS UP ONE TO TWO TABLE CONNECTED WITH A RAMP CREATING  
DIFFERENT LEVELS OF SPACE AND GIVES THE CUSTOMER SOME PRIVACY.

